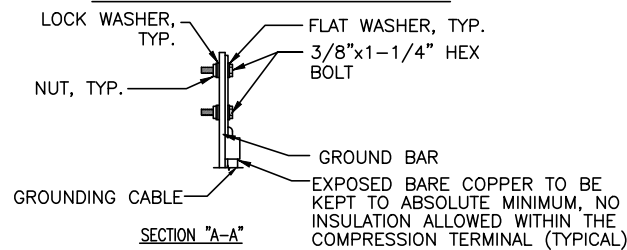
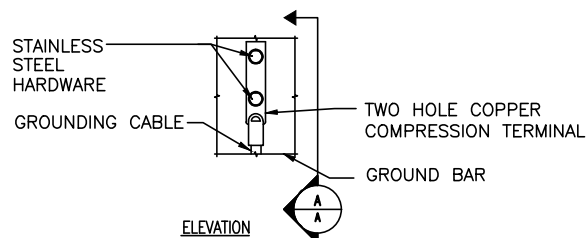


NOTE:

1. DO NOT INSTALL CABLE GROUND KIT AT A BEND AND ALWAYS DIRECT GROUND WIRE DOWN TO CIGBE.

GROUND WIRE TO GROUND BAR CONNECTION DETAIL

SCALE: N.T.S

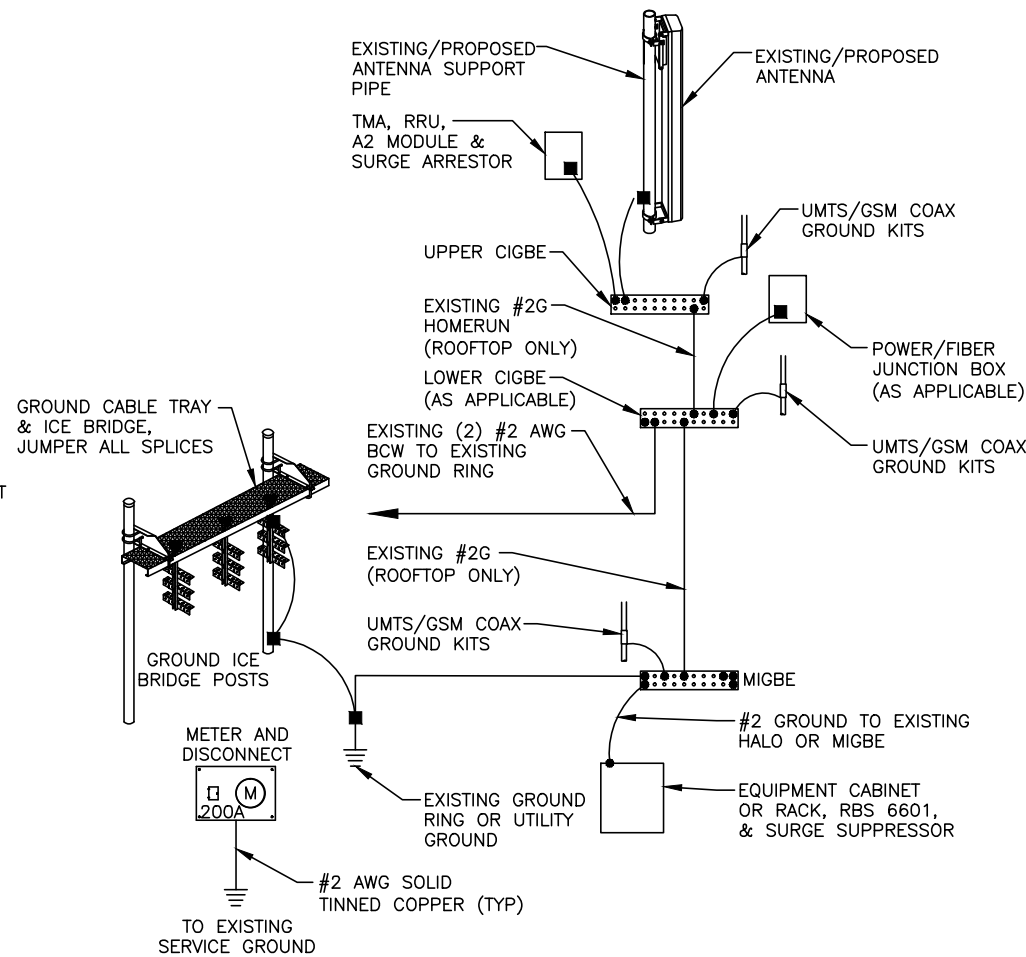


NOTE:

1. "DOUBLING UP" OR "STACKING" OF CONNECTION IS NOT PERMITTED.
2. OXIDE INHIBITING COMPOUND TO BE USED AT ALL LOCATIONS.
3. CADWELD DOWNLEADS FROM UPPER EGB, LOWER EGB, AND MGB.

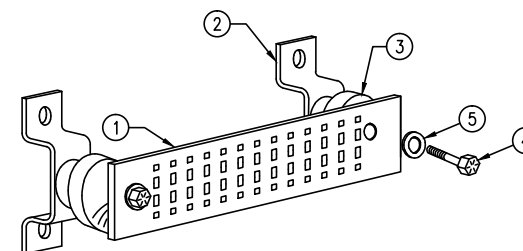
TYPICAL GROUND BAR CONNECTION DETAIL

SCALE: N.T.S



GROUNDING RISER DIAGRAM

SCALE: N.T.S



GROUND BAR - DETAIL

SCALE: N.T.S



EACH GROUND CONDUCTOR TERMINATING ON ANY GROUND BAR SHALL HAVE AN IDENTIFICATION TAG ATTACHED AT EACH END THAT WILL IDENTIFY ITS ORIGIN AND DESTINATION.

SECTION "P" - SURGE PRODUCERS

- CABLE ENTRY PORTS (HATCH PLATES) (#2)
- GENERATOR FRAMEWORK (IF AVAILABLE) (#2)
- TELCO GROUND BAR
- COMMERCIAL POWER COMMON NEUTRAL/GROUND BOND (#2)
- +24V POWER SUPPLY RETURN BAR (#2)
- 48V POWER SUPPLY RETURN BAR (#2)
- RECTIFIER FRAMES.

SECTION "A" - SURGE ABSORBERS

- INTERIOR GROUND RING (#2)
- EXTERNAL EARTH GROUND FIELD (BURIED GROUND RING) (#2)
- METALLIC COLD WATER PIPE (IF AVAILABLE) (#2)
- BUILDING STEEL (IF AVAILABLE) (#2)



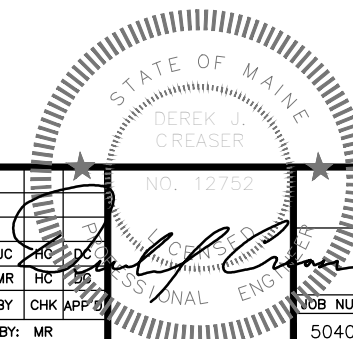
EMPIRE telecom
16 ESQUIRE ROAD
BILLERICA, MA 01862
TEL: (978) 608-8400

SITE NUMBER: ME5040
SITE NAME: AWE- MUNJOY HILL

211 CUMBERLAND AVENUE
PORTLAND, ME 04101
CUMBERLAND COUNTY



NO.	DATE	REVISIONS	BY	CHK	APP
1	04/17/15	ISSUED WITH RF BARRIER	JC	HC	DCG
0	01/23/15	ISSUED FOR REVIEW	MR	HC	DCG
SCALE: AS SHOWN		DESIGNED BY: HC	DRAWN BY: MR		



AT&T

GROUNDING DETAILS
(LTE-4C 2015)

NOB NUMBER	DRAWING NUMBER	REV
5040.01	G-1	1