

PROPOSED SURGE SUPPRESSOR  
 MODEL NUMBERS:  
 DC6-48-60-18-8F  
 DC6-48-60-0-8F  
 DIMENSIONS:  
 H24.0"x9.7"φ  
 WITH BRACKET:  
 H31.25"x9.7"φ

NOTE:  
 MOUNT PER MANUFACTURER'S SPECIFICATIONS.

**DC SURGE SUPPRESSOR DETAIL** 1  
 SCALE: N.T.S. A-4

NOTE:  
 SEE RFDS FOR RRH FREQUENCY AND MODEL NUMBER

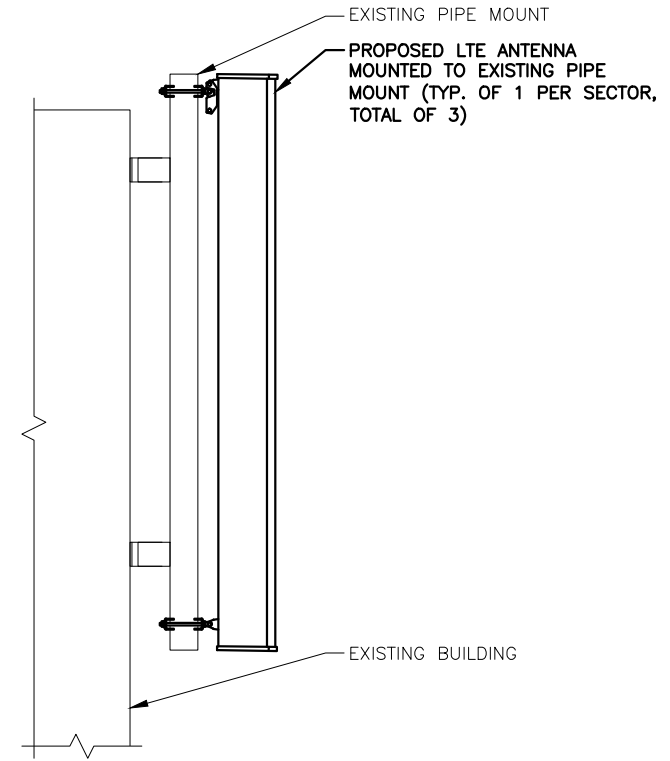
PROPOSED RRH REFER TO THE FINAL RFDS AND CHART FOR QUANTITY, MODEL AND DIMENSIONS

	L	W	D
RRUS - 11	19.7"	17.0"	7.2"
LTE - A2	16.4"	15.2"	3.4"

PROPOSED A2 REFER TO THE FINAL RFDS AND CHART FOR QUANTITY, MODEL AND DIMENSIONS

NOTE:  
 MOUNT PER MANUFACTURER'S SPECIFICATIONS.

**RRH DETAIL** 2  
 SCALE: N.T.S. A-4

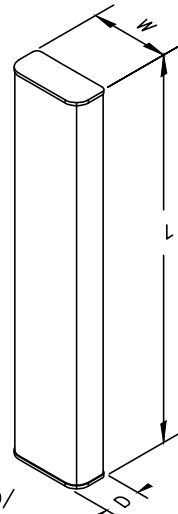


NOTE:  
 REFER TO STRUCTURAL ANALYSIS BY: HUDSON DESIGN GROUP, LLC, DATED: APRIL 24, 2015, FOR THE CAPACITY OF THE EXISTING STRUCTURES TO SUPPORT THE PROPOSED EQUIPMENT.

NOTE:  
 REFER TO THE FINAL RF DATA SHEET FOR FINAL ANTENNA SETTINGS.

**PROPOSED ANTENNA MOUNTING DETAIL (GAMMA SECTOR)** 3  
 SCALE: N.T.S. A-4

NOTES:  
 1. REFER TO RF CONFIG & SECTOR SCHEMATICS FOR MODEL, TYPE & QUANTITY REQUIRED PER SECTOR



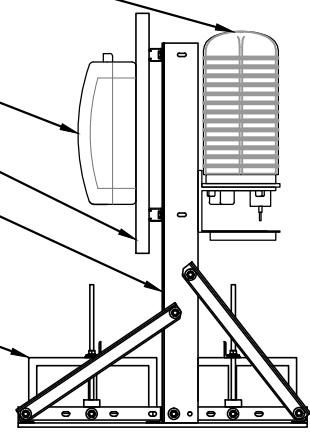
PROPOSED SURGE ARRESTOR (TYP. OF 1 PER SECTOR, TOTAL OF 3)

PROPOSED RRH (TYP. OF 2 PER SECTOR, TOTAL OF 6)

PROPOSED VERTICAL 1 5/8" UNISTRUT (AS REQUIRED)

PROPOSED NON-PENETRATING BALLAST MOUNT ANDREW PART #RR-TFS (TYP. OF 1 PER SECTOR, TOTAL OF 3)

PROPOSED CONCRETE BLOCKS (QUANTITY AND WEIGHT TO BE DETERMINED)



NUMBER OF BLOCKS PER SIDE	2
SIZE OF BLOCKS	4"x8"x16" (SOLID)
WEIGHT OF BLOCKS	38 lbs. EACH
TOTAL WEIGHT OF BLOCKS PER SIDE	76
TOTAL NUMBER OF BLOCKS	4
TOTAL BALLAST WEIGHT	152

**PROPOSED RRH MOUNTING DETAIL** 5  
 SCALE: N.T.S. A-4

TECHNOLOGY	SECTOR	ANTENNA MODEL	L	W	D
UMTS	ALL	7750	57.0"	11.0"	5.0"
LTE	A & G	AM-X-CD-16-65-00T-RET	72.0"	11.8"	5.9"
LTE	B	AM-X-CD-14-65-00T-RET	48.0"	11.8"	5.9"
LTE 3C/4C	A & G	HPA-65R-BUU-H6	60.0"	14.9"	9.0"
LTE 3C/4C	B	SBNHH-1D65A	55.0"	11.9"	7.1"

**ANTENNA DETAIL** 4  
 SCALE: N.T.S. A-4

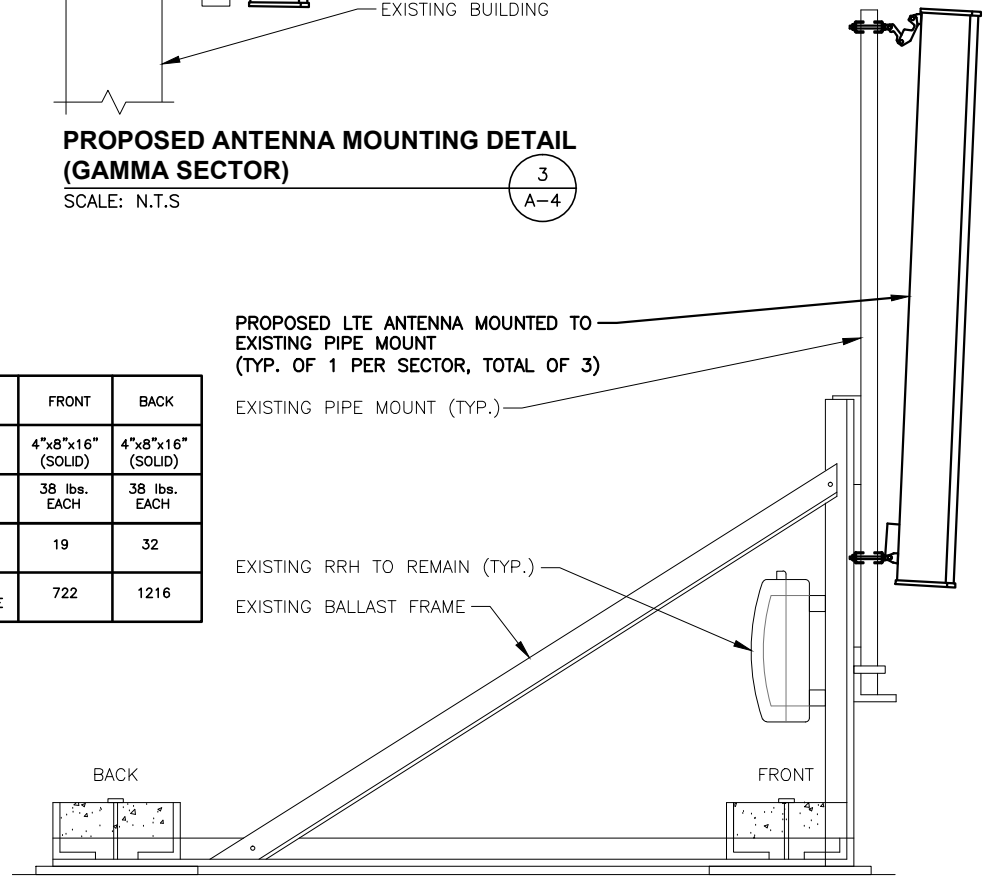
NUMBER OF BLOCKS PER SIDE	FRONT	BACK
SIZE OF BLOCKS	4"x8"x16" (SOLID)	4"x8"x16" (SOLID)
WEIGHT OF BLOCKS	38 lbs. EACH	38 lbs. EACH
TOTAL NUMBER OF BLOCKS	19	32
TOTAL WEIGHT OF BLOCKS PER SIDE	722	1216

PROPOSED LTE ANTENNA MOUNTED TO EXISTING PIPE MOUNT (TYP. OF 1 PER SECTOR, TOTAL OF 3)

EXISTING PIPE MOUNT (TYP.)

EXISTING RRH TO REMAIN (TYP.)

EXISTING BALLAST FRAME



**PROPOSED ANTENNA MOUNTING DETAIL (ALPHA & BETA SECTOR)** 6  
 SCALE: N.T.S. A-4

**Hudson Design Group**  
 1600 OSGOOD STREET  
 BUILDING 20 NORTH, SUITE 309D  
 N. ANDOVER, MA 01845  
 TEL: (978) 557-5553  
 FAX: (978) 336-5586

**EMPIRE telecom**  
 16 ESQUIRE ROAD  
 BILLERICA, MA 01862  
 TEL: (978) 608-8400

**SITE NUMBER: ME5040**  
**SITE NAME: AWE- MUNJOY HILL**  
 211 CUMBERLAND AVENUE  
 PORTLAND, ME 04101  
 CUMBERLAND COUNTY

**at&t**  
 550 COCHITUATE ROAD  
 FRAMINGHAM, MA 01701

NO.	DATE	REVISIONS	BY	CHK	APP
1	04/17/15	ISSUED WITH RF BARRIER	JC	HC	DC
0	01/23/15	ISSUED FOR REVIEW	MR	HC	DC

SCALE: AS SHOWN    DESIGNED BY: HC    DRAWN BY: MR

STATE OF MAINE  
 DEREK J. GREASER  
 NO. 12752  
 LICENSED PROFESSIONAL ENGINEER

**AT&T**  
 DETAILS  
 (LTE-4C 2015)  
 DRAWING NUMBER: A-3  
 JOB NUMBER: 5040.01  
 REV: 1