

GRANT HAYS
ASSOCIATES

ARCHITECTURE & INTERIOR DESIGN
P.O. BOX 6179 FALMOUTH MAINE 04105
207.871.5900 www.granthays.com

DATE: 01/28/2016

REVISIONS

02/18/2016

PROJECT NAME

6 UNIT APARTMENT/COMMERCIAL
223 CUMBERLAND AVENUE
477 CONGRESS STREET
PORTLAND, MAINE 04101

SHEET

ELEVATIONS

DATE: 01 JAN 2016

SCALE: 1/4"=1'-0"

DRAWN: JAM/MFH

JOB NO. 150904

SHEET

A6

COPYRIGHT REPRODUCTION OR RELIANCE ON THIS DOCUMENT WITHOUT WRITTEN PERMISSION FROM GRANT HAYS ASSOCIATES IS PROHIBITED.



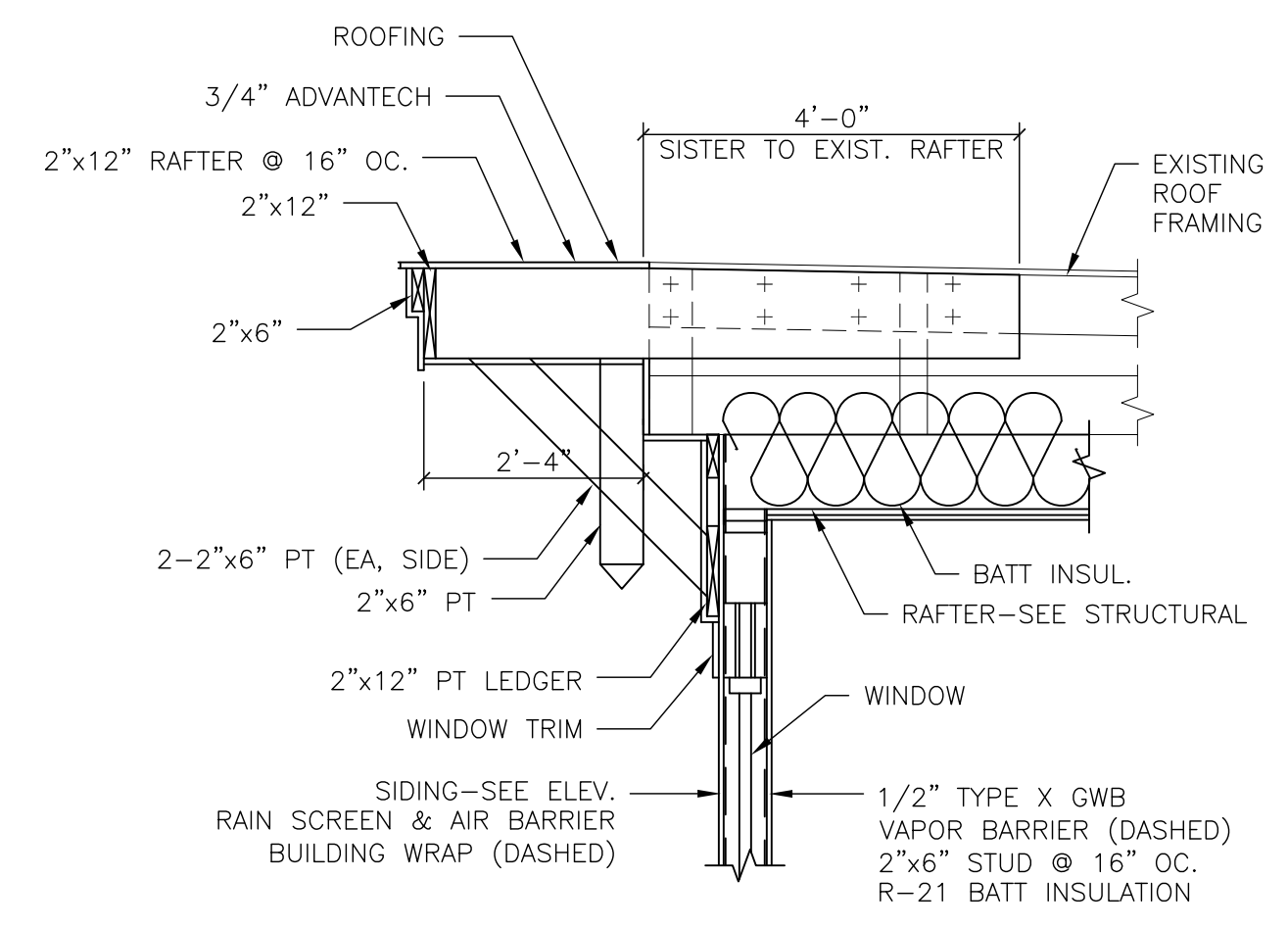
CUMBERLAND AVENUE ELEVATION
SCALE: 3/16"=1'-0"

WILMOT STREET ELEVATION
SCALE: 3/16"=1'-0"

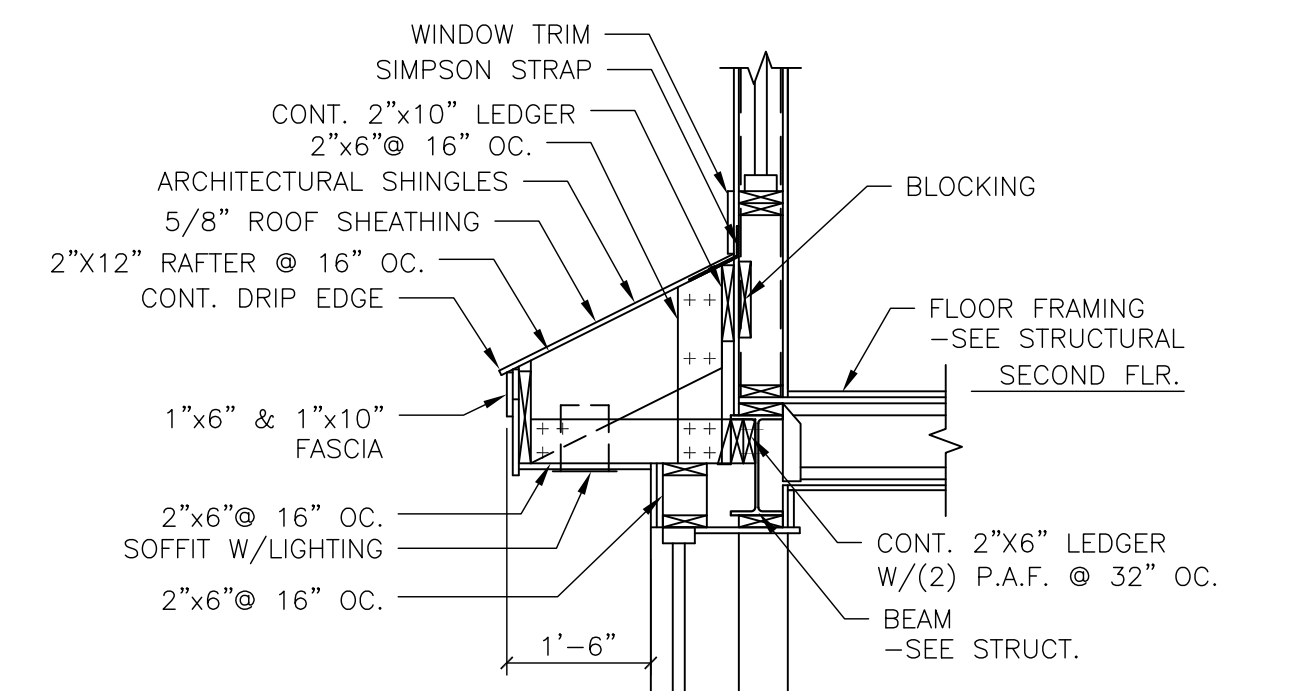


REAR ELEVATION
SCALE: 3/16"=1'-0"

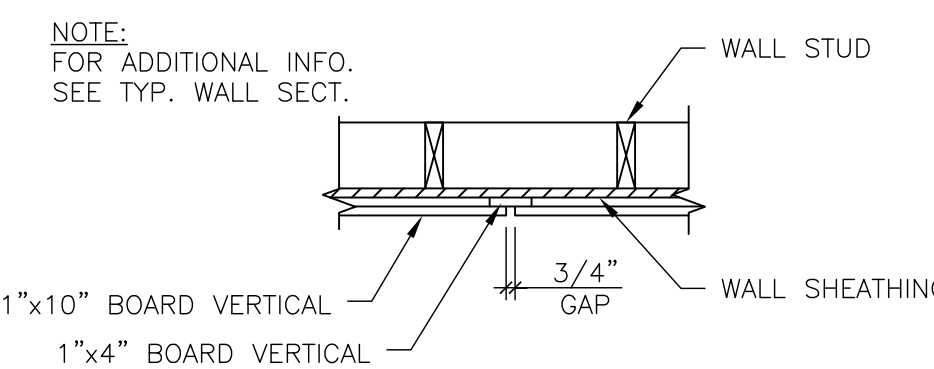
LEFT SIDE ELEVATION
SCALE: 3/16"=1'-0"



NOTE:
NOT ALL INSULATION SHOWN FOR CLARITY SEE WALL SECTIONS

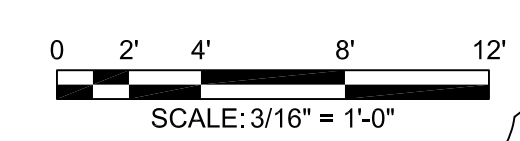


TYPICAL WALL SECTION
SCALE: 1/2"=1'-0"



NOTE:
FOR ADDITIONAL INFO.
SEE TYP. WALL SECT.

PLAN-VERTICAL SIDING DETAIL
SCALE: 3/4"=1'-0"



SCALE: 3/16"=1'-0"