

REVISIONS
 ▲ 10.15.2015 PER MARSHALL
 ▲ 10.15.2015
 ▲ 01.25.2016

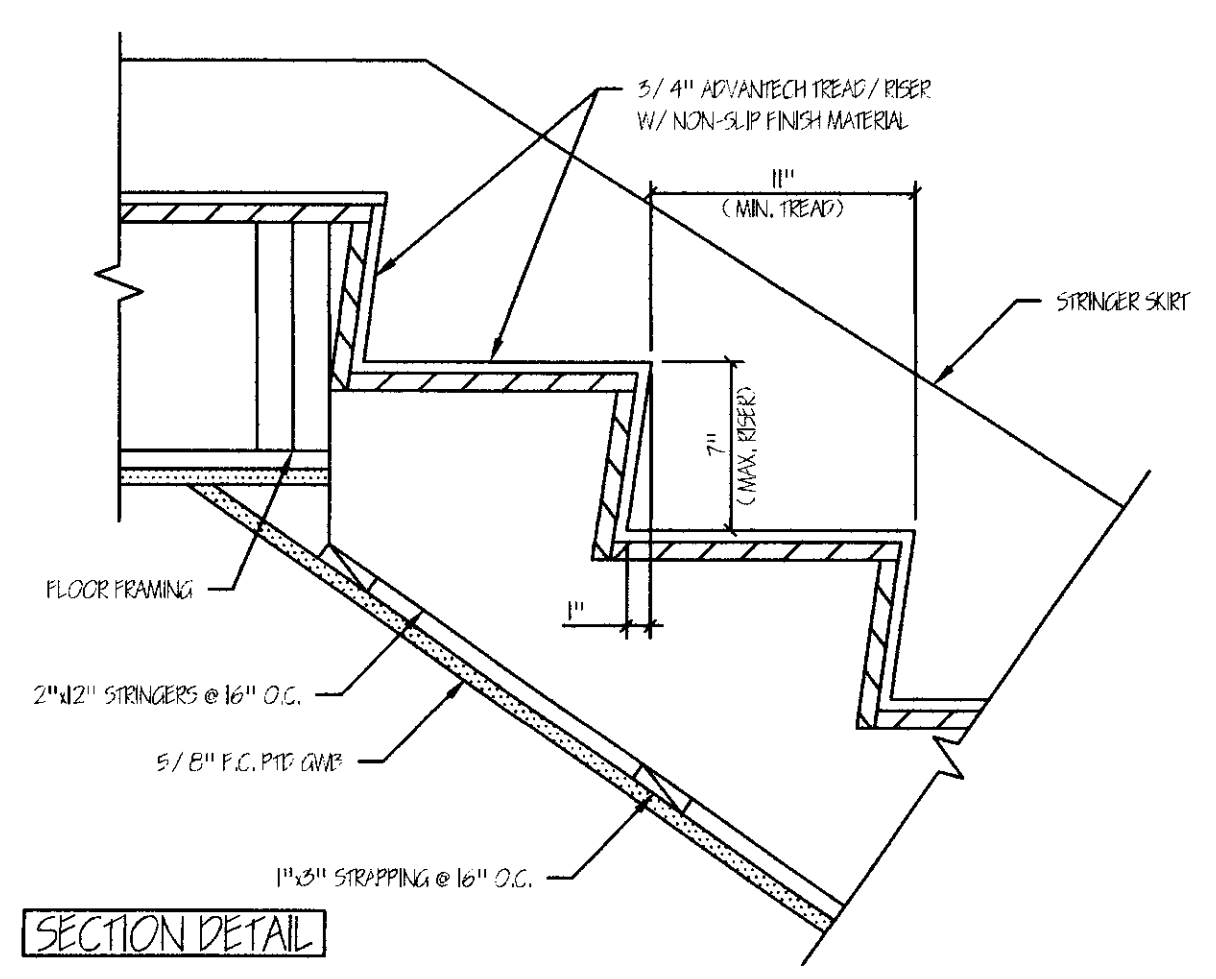
PROJECT NAME
6 UNIT APARTMENT/COMMERCIAL
225 CUMBERLAND AVENUE
 PORTLAND, MAINE 04101

DETAILS & SCHEDULES

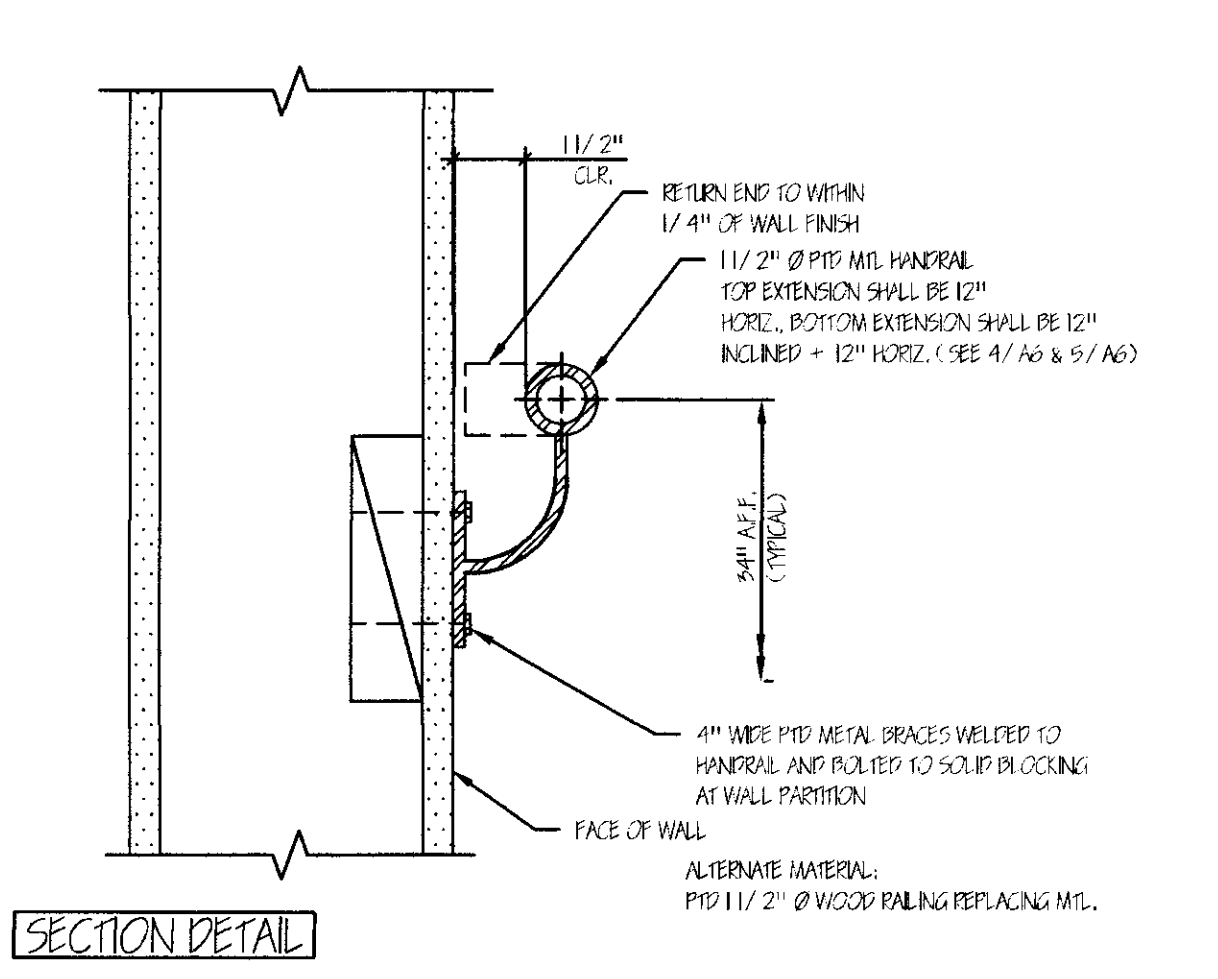
DATE: 29/EPT 2015
 SCALE: 1/4"=1'-0"
 DRAWN: JAM/MFH
 JOB NO: 150904
 SHEET

A5

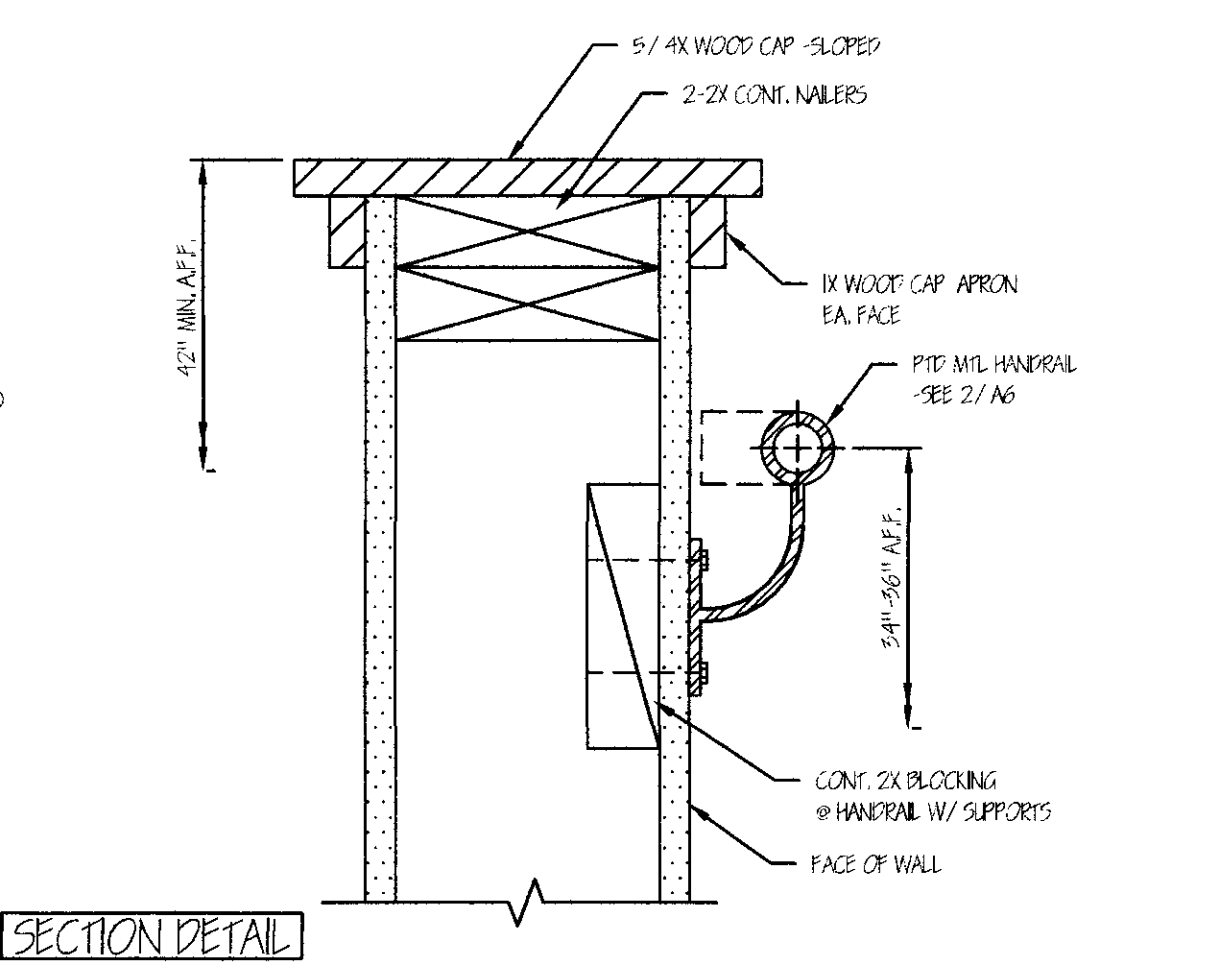
COPYRIGHT REPRODUCTION OR REVISE OF THIS DOCUMENT WITHOUT WRITTEN PERMISSION FROM GRANT HAYS ASSOCIATES IS PROHIBITED.



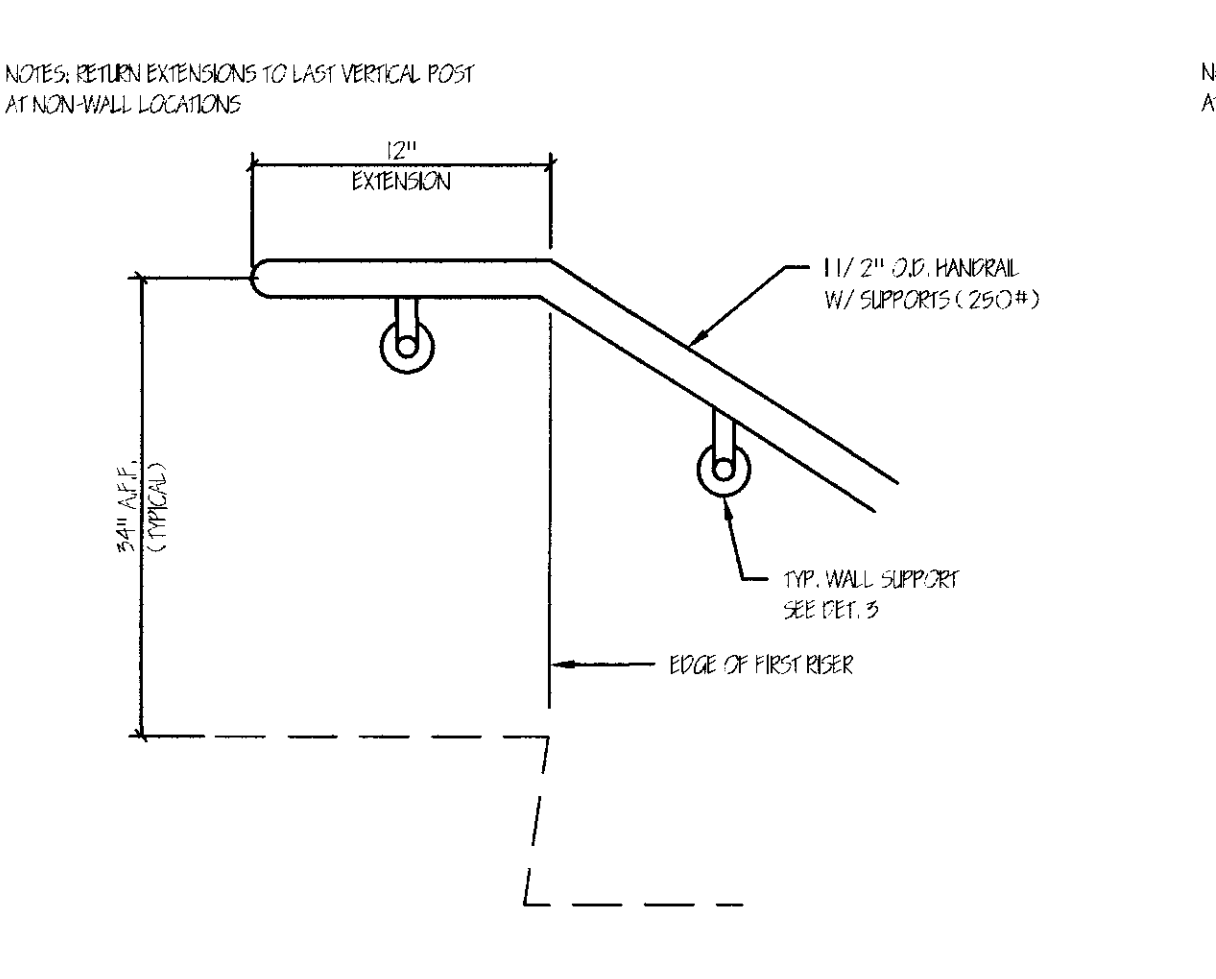
1 INTERIOR STAIR RISER/TREAD DETAIL 1 1/2"=1'-0"



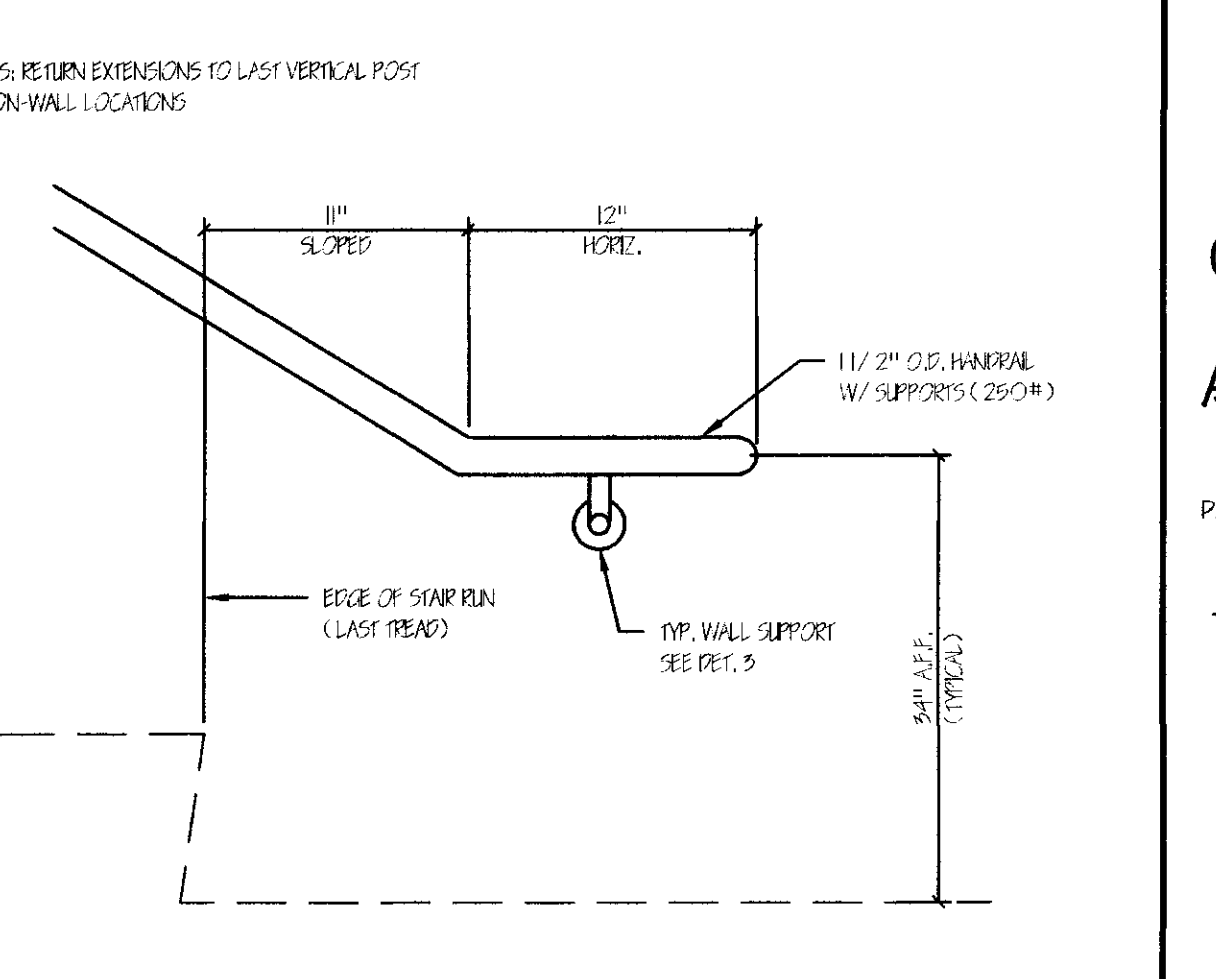
2 TYPICAL WALL HANDRAIL SECTION 3\"/>



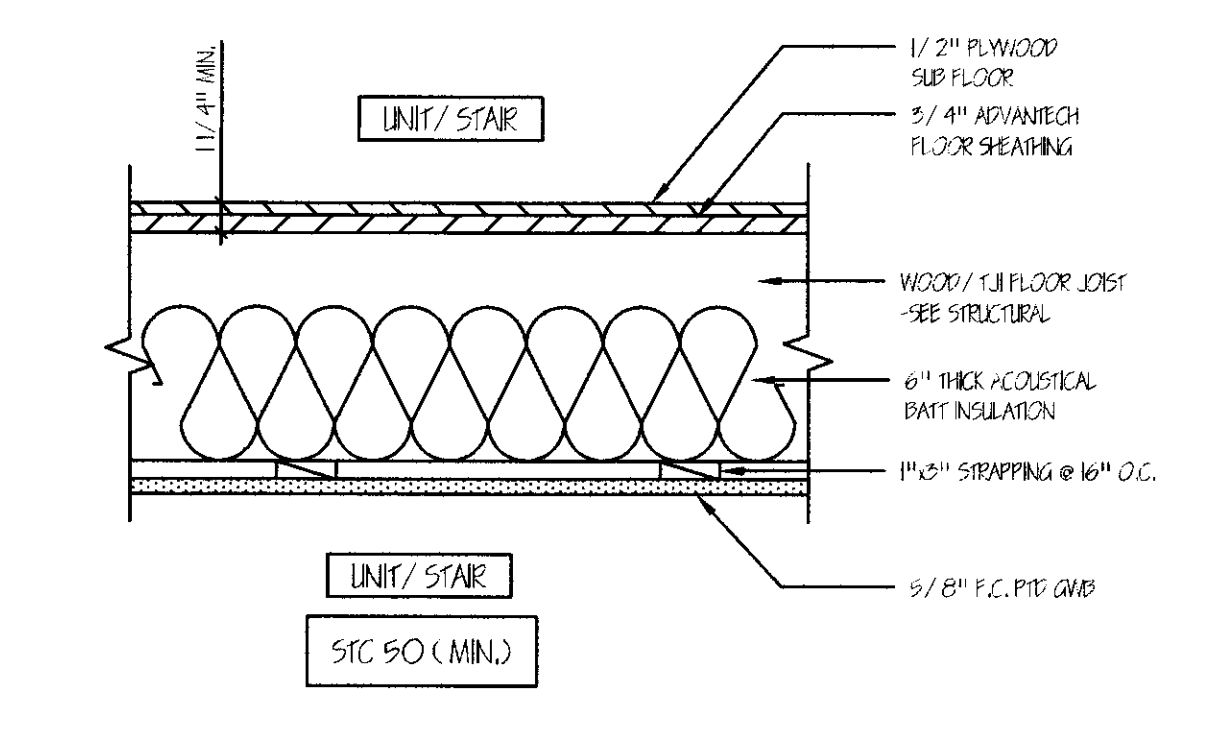
3 HALF WALL W/ STAIR GUARDRAIL 3\"/>



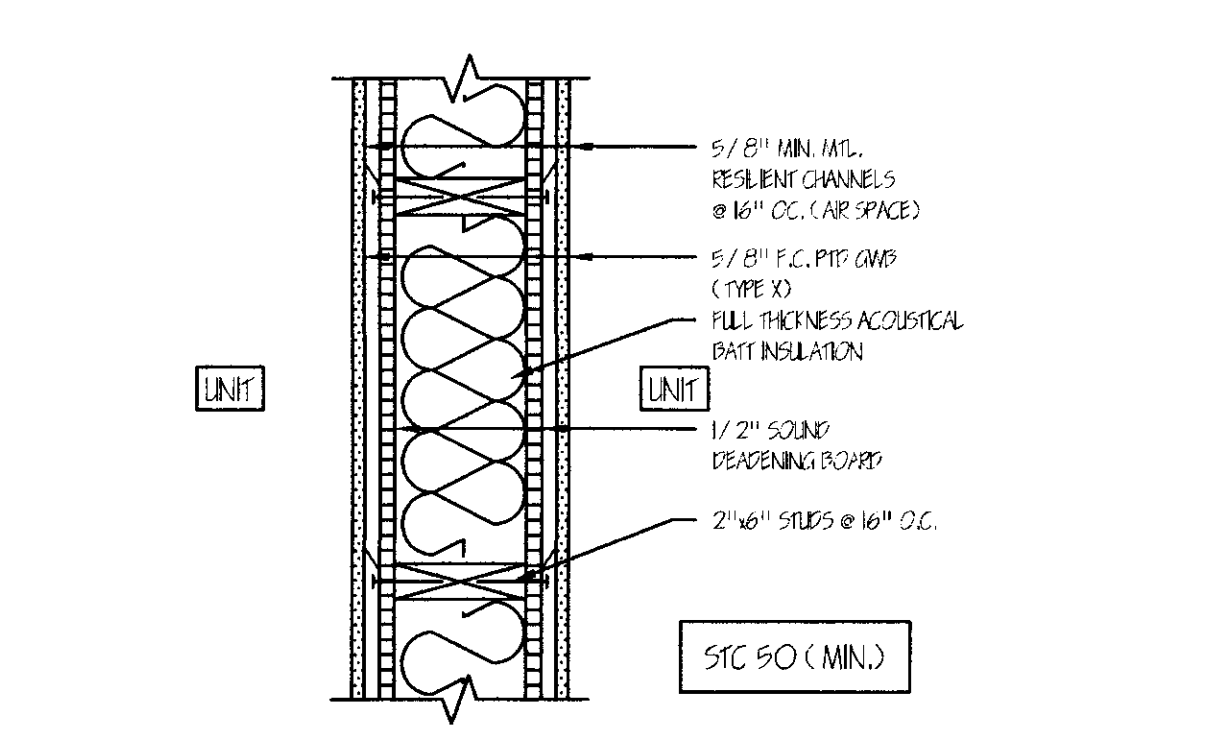
4 TYPICAL WALL HANDRAIL-TOP 3\"/>



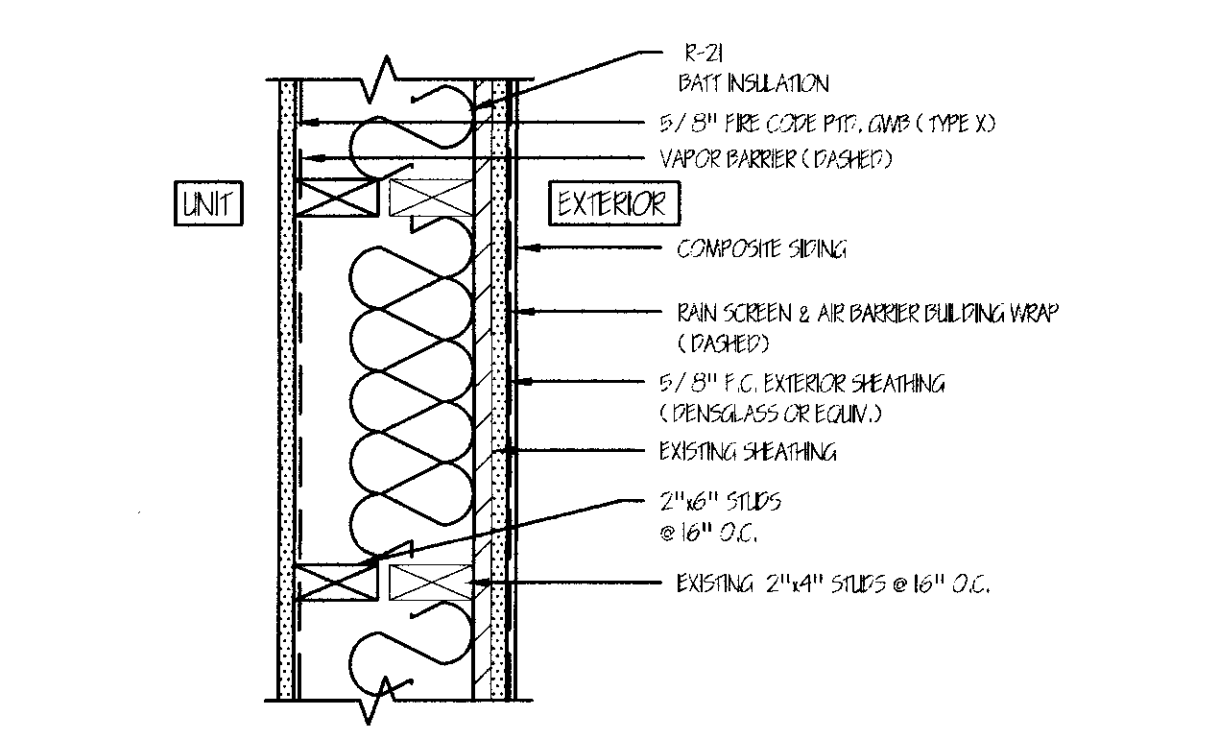
5 TYPICAL WALL HANDRAIL-BOTTOM 3\"/>



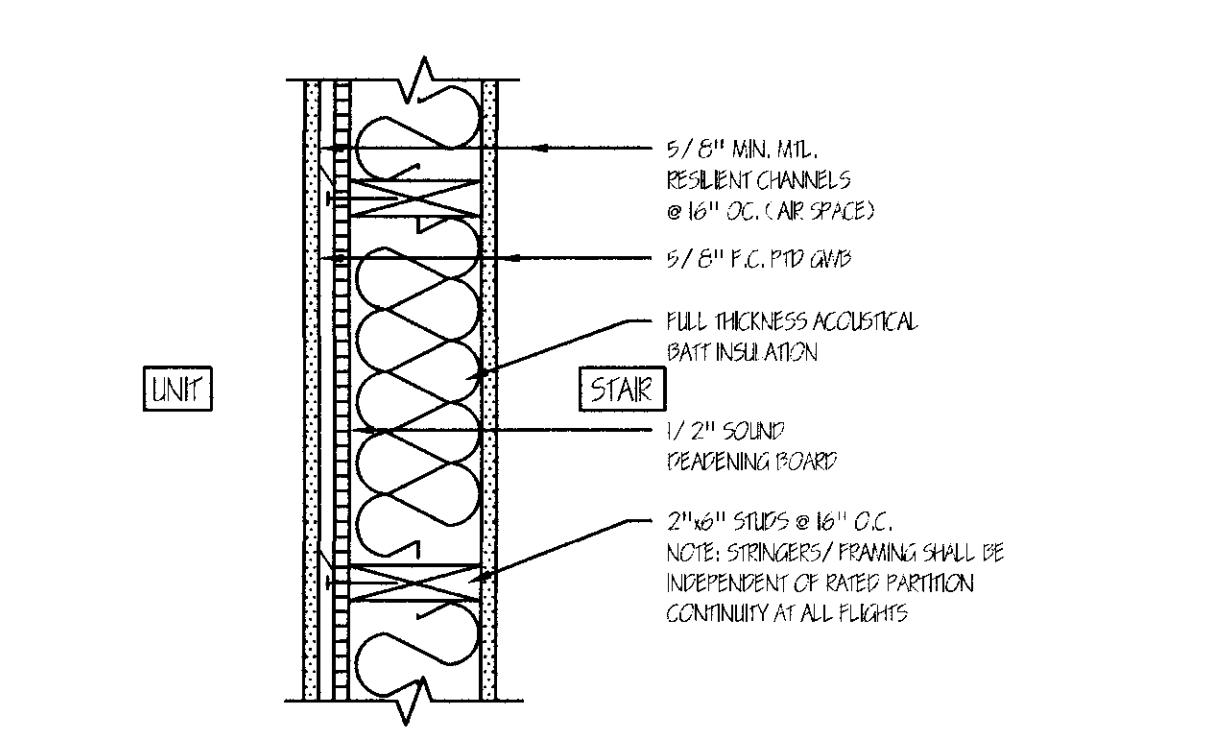
6 1 HR RATED FLOOR/CEILING ASSEMBLY 1 1/2"=1'-0"



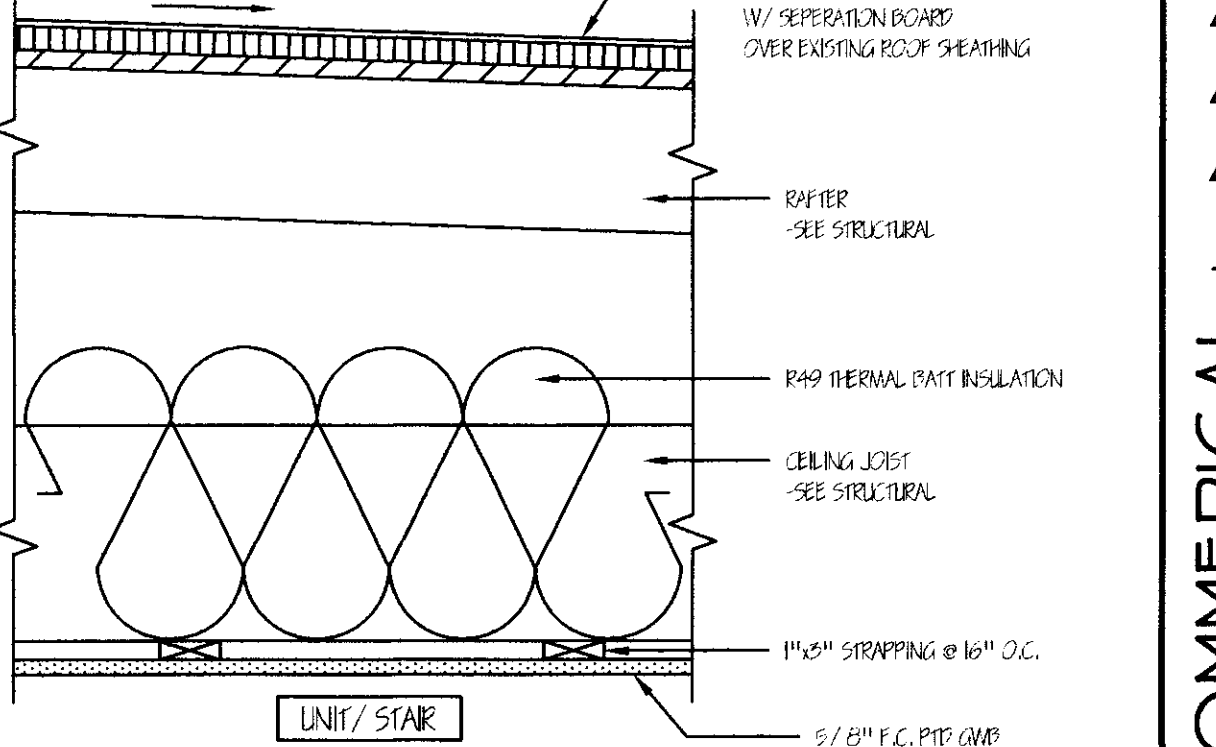
7 1 HR RATED SEPERATION PARTITION ASSEMBLY 1 1/2"=1'-0"



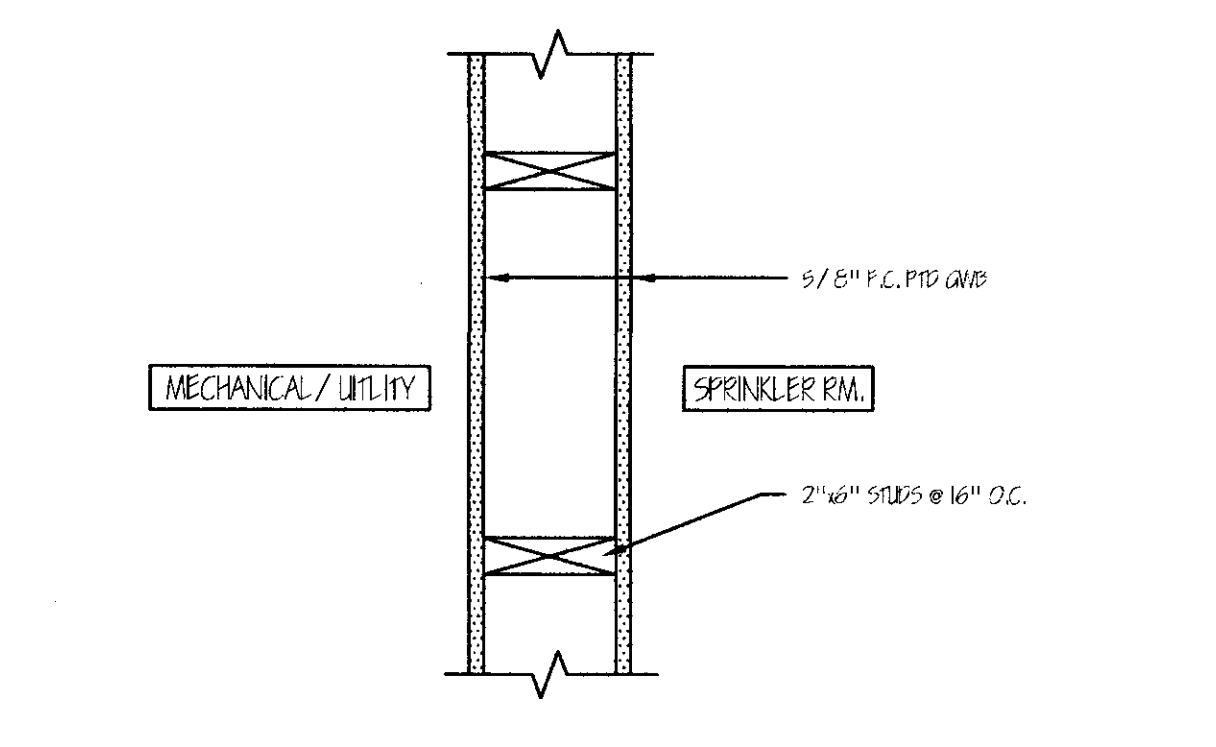
8 1 HR RATED EXTERIOR WALL ASSEMBLY 1 1/2"=1'-0"



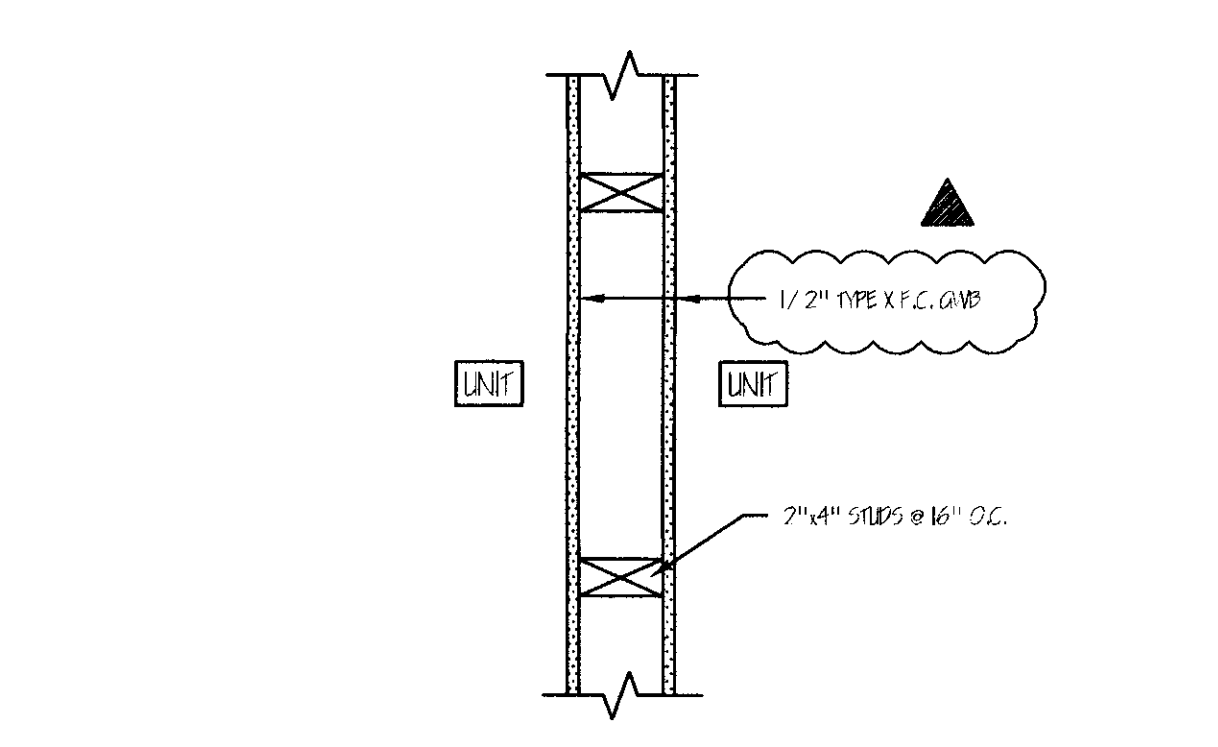
9 1 HR RATED PARTITION AT STAIR 1 1/2"=1'-0"



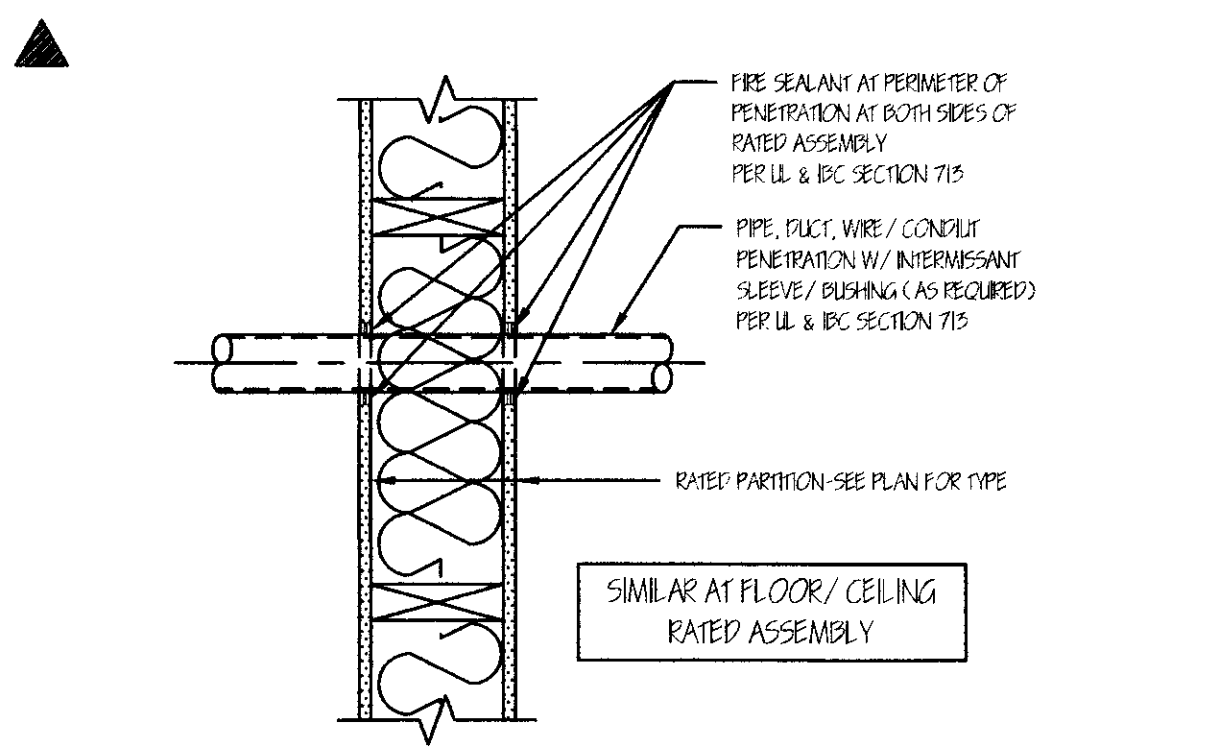
10 1 HR RATED CEILING/ROOF ASSEMBLY 1 1/2"=1'-0"



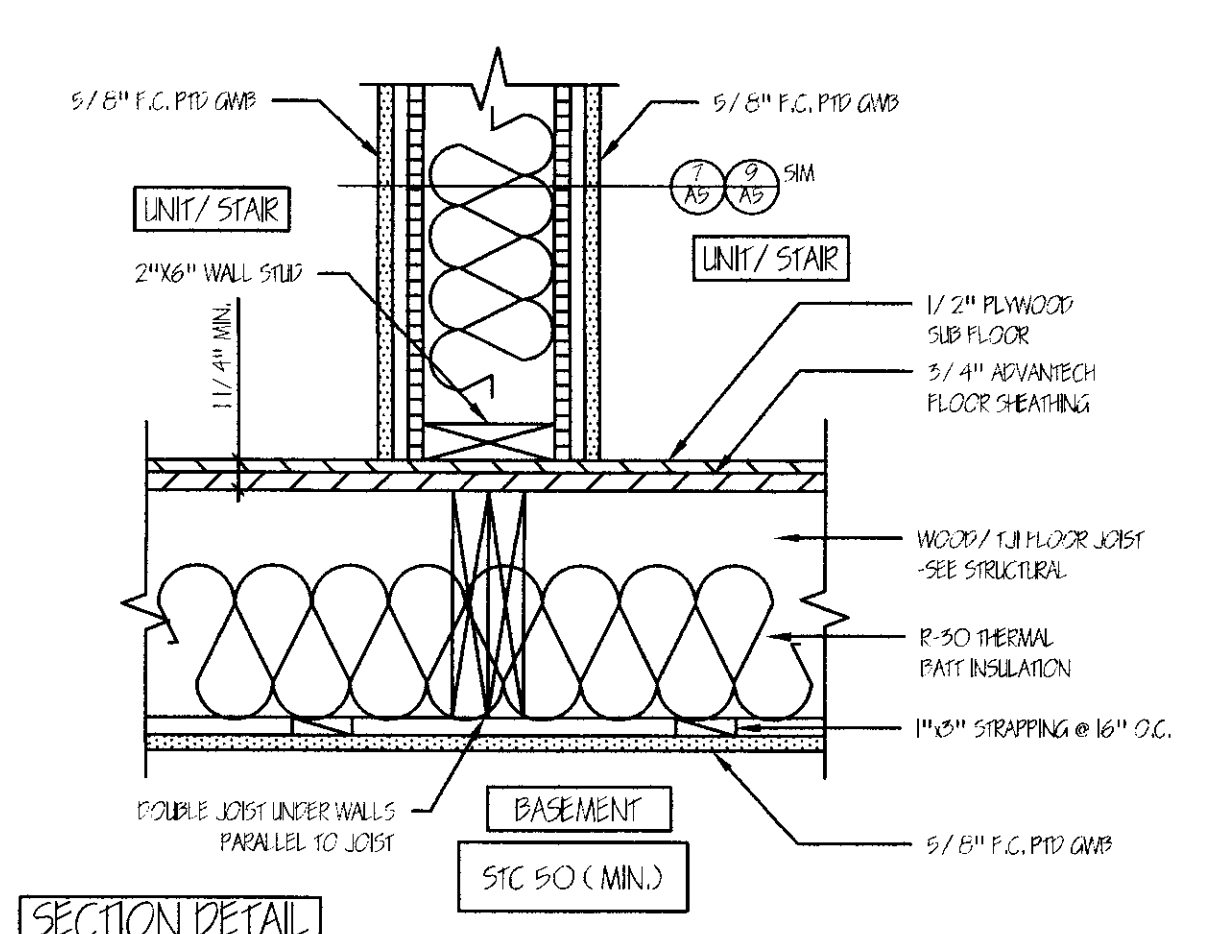
11 1 HR RATED PARTITION WALL 1 1/2"=1'-0"



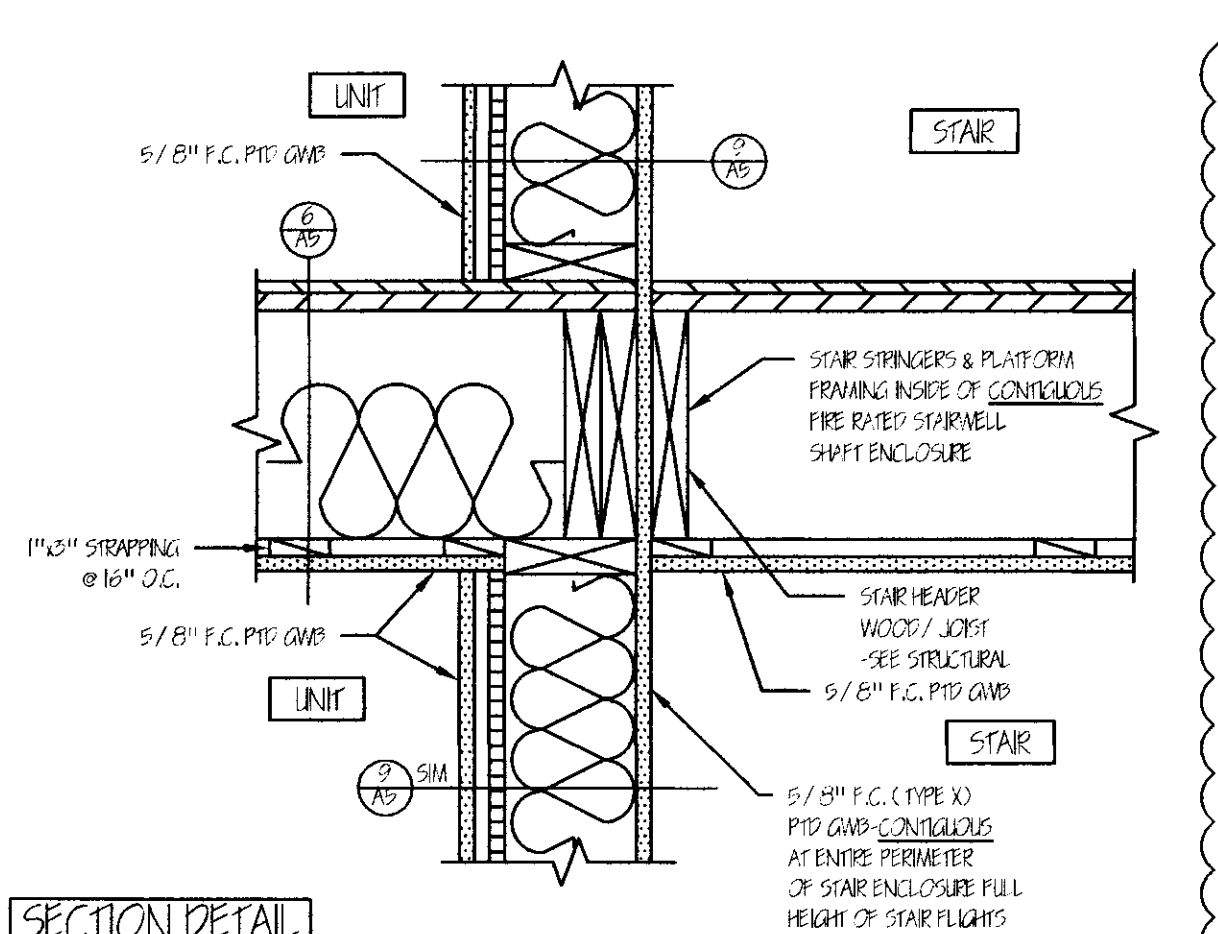
13 NON-RATED INTERIOR PARTITION WALL 1 1/2"=1'-0"



16 FIRE SEALANT @ PENETRATIONS 1 1/2"=1'-0"



12 1 HR RATED FIRST FLOOR ASSEMBLY 1 1/2"=1'-0"



14 1 HR RATED UNIT/STAIR SEPARATION @ 1 HR FIRE RATED FLOOR/CEILING ASSEMBLY 1 1/2"=1'-0"

DOOR SCHEDULE						
NO.	SIZE (WHD)	INSUL	FIRE RATING	HARDWARE	SWING	REMARKS
01	5'-0"x6'-5"	NONE	1HR	HW-5	PER PLAN	* DOOR/FRAME ASSEMBLY, SELF CLOSING
02	5'-0"x6'-5"	NONE	1HR	HW-5	PER PLAN	* DOOR/FRAME ASSEMBLY, SELF CLOSING
03	5'-0"x6'-5"	R-7	NONE	HW-1	PER PLAN	
04	5'-0"x6'-5"	R-7	NONE	HW-1	PER PLAN	
05	5'-0"x6'-5"	R-7	NONE	HW-1	PER PLAN	
06	5'-0"x6'-5"	R-7	1HR	HW-2	PER PLAN	* DOOR/FRAME ASSEMBLY, SELF CLOSING
07	5'-0"x6'-5"	NONE	NONE	HW-5	PER PLAN	
08	5'-0"x6'-5"	NONE	NONE	HW-4	PER PLAN	
09	5'-0"x6'-5"	R-7	1HR	HW-2	PER PLAN	* DOOR/FRAME ASSEMBLY, SELF CLOSING
10	5'-0"x6'-5"	R-7	1HR	HW-2	PER PLAN	* DOOR/FRAME ASSEMBLY, SELF CLOSING
11	5'-0"x6'-5"	R-7	1HR	HW-2	PER PLAN	* DOOR/FRAME ASSEMBLY, SELF CLOSING

NOTE: SEE FLOOR PLANS FOR UNIT INTERIOR DOOR SIZES, SWING AND TYPE

NO.	SIZE (WHD)	TYPE	FIRE RATING	GLAZING	ROUGH OPENING (WHD)	REMARKS
A	6'-0"x6'-0"	FIXED	NONE	INSUL. GL.	6'-0 1/2"x6'-0 1/2"	ANDERSEN OR EQUIV.
B	5'-6"x6'-0"	FIXED	NONE	INSUL. GL.	5'-6 1/2"x6'-0 1/2"	ANDERSEN OR EQUIV.
C	5'-2"x4'-6"	FIXED	NONE	INSUL. GL.	5'-2 1/2"x4'-6 1/2"	ANDERSEN OR EQUIV.
D	1W5046	DOUBLE-HUNG	NONE	INSUL. GL.	5'-2 1/2"x4'-9 1/4"	ANDERSEN OR EQUIV. (CEBRSS WINDOW)
E	1W5046	DOUBLE-HUNG	NONE	TEMP. INSUL. GL.	5'-2 1/2"x4'-9 1/4"	ANDERSEN OR EQUIV. (CEBRSS WINDOW)

NOTE: SEE FLOOR PLANS FOR UNIT INTERIOR DOOR SIZES, SWING AND TYPE

NO.	SIZE (WHD)	TYPE	FIRE RATING	GLAZING	ROUGH OPENING (WHD)	REMARKS
HW-1	5 BUITS *	DOOR ENTRY LEVER LOCKSET, THRESHOLD WEATHER STRIPPING, DOOR BOTTOM				* GC OPTIONAL SELF CLOSING BUITS OR DOOR CLOSERS
HW-2	5 BUITS *	DOOR ENTRY LEVER LOCKSET, THRESHOLD WEATHER STRIPPING, FLOOR BOTTOM, DOOR VEEVER				* GC OPTIONAL SELF CLOSING BUITS OR DOOR CLOSERS
INTERNAL UNIT DOORS	5 BUITS	LATCH SET EXCEPT PRIMARY SET AT BATHROOMS				
HW-3	5 BUITS	LEVER PRIVACY LOCK SET				
HW-4	5 BUITS	LEVER OFFICE LOCK SET				
HW-5	5 BUITS *	FLOOR PASSAGE LEVER LATCH SET				* GC OPTIONAL SELF CLOSING BUITS OR DOOR CLOSERS
HW-6	5 BUITS *	FLOOR PASSAGE SET, FRAME SLIDERS				* GC OPTIONAL SELF CLOSING BUITS OR DOOR CLOSERS

WINDOW & DOOR SCHEDULE & HARDWARE SETS