

REVISIONS  
10/19/2015 FIRE MARSHAL  
01/29/2016

PROJECT NAME

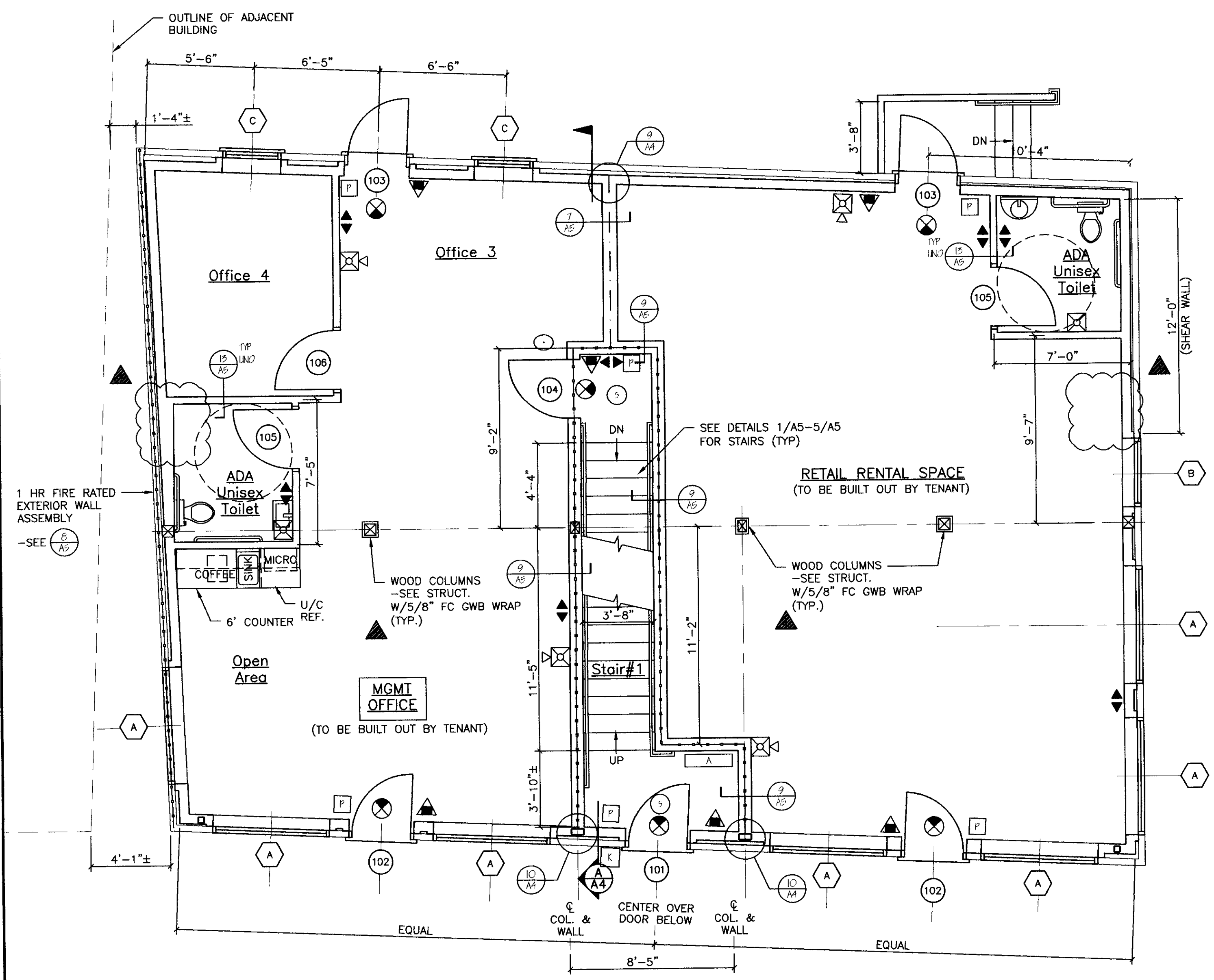
6 UNIT APARTMENT/COMMERCIAL  
223 CUMBERLAND AVENUE  
223 CUMBERLAND AVENUE LLC.  
477 CONGRESS STREET  
PORTLAND, MAINE 04101

SHEET

FIRST & SECOND  
FLOOR PLAN

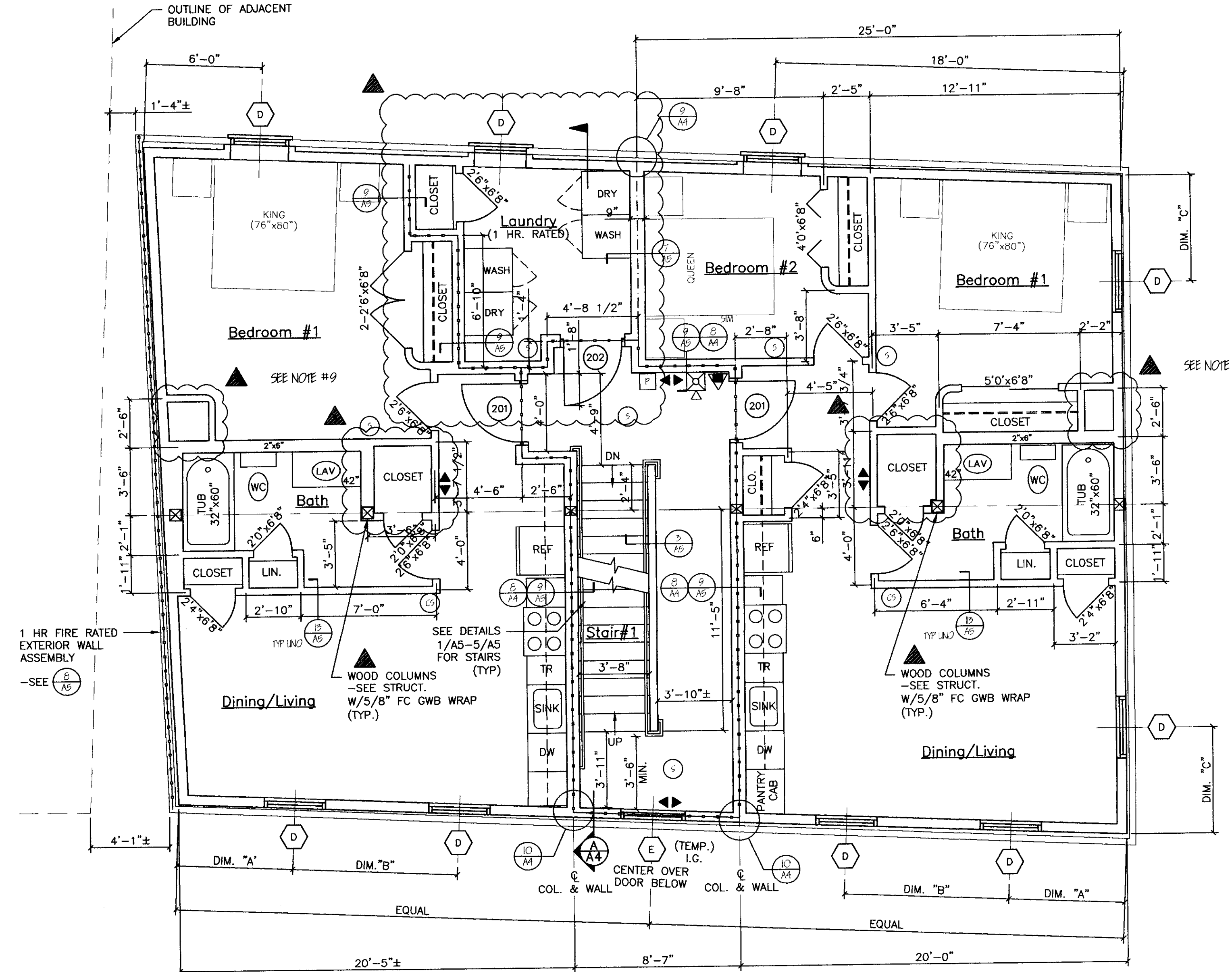
DATE  
29/EPT 2015  
SCALE  
1/4"=1'-0"  
DRAWN  
JAM/MFH  
JOB NO.  
150904  
SHEET

A2  
COPYRIGHT  
REPRODUCTION OR RELIEF OF THIS  
DOCUMENT WITHOUT WRITTEN  
PERMISSION FROM GRANT HAY/  
ASSOCIATES IS PROHIBITED.



FIRST FLOOR PLAN  
SCALE: 1/4"=1'-0"  
0 2' 4' 8'  
SCALE: 1/4"=1'-0"

REFER TO SHEET A6 FOR ACCESSIBILITY DETAILS & NOTES  
AT FIRST FLOOR BUSINESS & MERCANTILE OCCUPANCIES



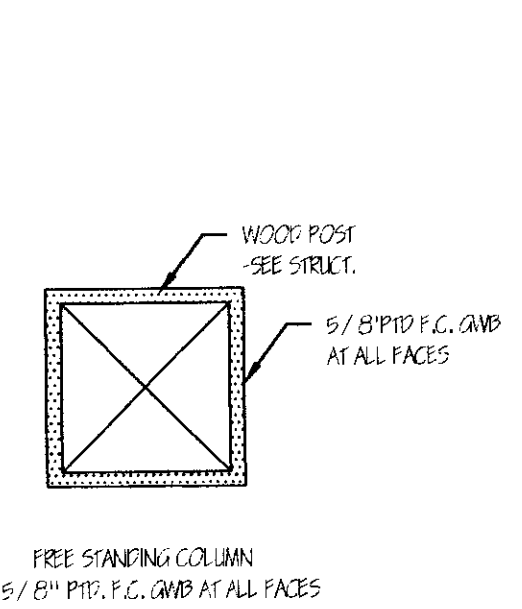
SECOND FLOOR PLAN  
SCALE: 1/4"=1'-0"  
0 2' 4' 8'  
SCALE: 1/4"=1'-0"

NFPA LEGEND	
	EXIT LIGHT
	FIRE EXTINGUISHER
	FIRE ALARM PULL MANUAL PULL STATION
	FIRE ALARM PANEL
	EMERGENCY LIGHT
	FIRE ALARM HORN STROBE UNIT
	FIRE ALARM STROBE UNIT
	SMOKE DETECTOR W/ SOUNDER BASE & STROBE (INTERCONNECTED)
	COMBINATION CARBON MONOXIDE / SMOKE DETECTOR W/ SOUNDER BASE & STROBE (INTERCONNECTED)
	HEAT DETECTOR
	ANNUNCIATOR PANEL
	KNOCK BOX
	1 HR FIRE RATED PARTITION
	1 HR FIRE RATED SEPARATION PARTITION
	"NOT AN EXIT" SIGN

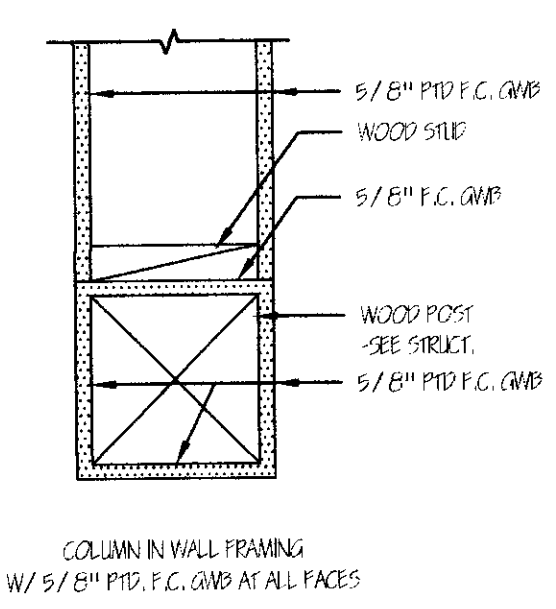
LIFE SAFETY NOTES	
1.	THE BUILDING SHALL HAVE AN NFPA 13 FIRE SUPPRESSION SPRINKLER SYSTEM INSTALLED. SPRINKLER SYSTEM SHALL BE INSTALLED BY A CERTIFIED SPRINKLER CONTRACTOR AND SHALL BE REVIEWED AND APPROVED BY THE STATE OF MAINE FIRE MARSHAL AS WELL AS THE LOCAL AUTHORITY HAVING JURISDICTION. THE CONTRACTOR SHALL BEAR SOLE RESPONSIBILITY FOR THE DESIGN AND INSTALLATION OF THE SYSTEM FOR OCCUPANCY.
2.	THE BUILDING SHALL HAVE A FIRE ALARM SYSTEM AS REQUIRED FOR COMPLIANCE WITH NFPA 72 LIFE SAFETY CODE. COORDINATE WITH SPRINKLER SYSTEM VERTICALLY LOCATION OF ALARM AND NOTIFICATION PANELS WITH THE AUTHORITY HAVING JURISDICTION.
3.	SEE ACCESSIBILITY DETAILS FOR MOUNTING HEIGHTS OF LIFE SAFETY DEVICES.
4.	ALL ALARMS AND DETECTORS SHALL BE INTERCONNECTED WITHIN EACH LIVING UNIT.
5.	REFER TO THE WINDOW SCHEDULE FOR EGRESS WINDOWS.

GENERAL NOTES	
1.	ALL HORIZONTAL UNIT SEPARATIONS (FLOOR/CEILING/ROOF) ASSEMBLIES SHALL BE 1 HR FIRE RATED / SIC 5.0. -SEE (6/AS) & (10/AS) & (1/AA)
2.	ALL VERTICAL UNIT SEPARATIONS (TENANT WALLS) SHALL BE 1 HR FIRE RATED / SIC 5.0 -SEE (7/AS)
3.	ALL SHAR ENCLOSURES SHALL BE 1 HR FIRE RATED -SEE (1/AS) & (2/AS)
4.	SHAR DETAILS -SEE (1/AS) THRU (2/AS)
5.	REMOVE EXISTING DECKS & FIRE ESCAPES IN THEIR ENTIRETY.
6.	SEE SHEET A6 FOR ACCESSIBILITY DETAILS AND NOTES.
7.	FIRE RATED PARTITIONS AT ROOF ASSEMBLY -SEE (6/AM) & (7/AM)
8.	SEE SHEET A4 FOR FIRE RATED CONTINITY DETAILS AT FLOOR/WALL ASSEMBLIES.
9.	INSTALL (HLTD) FIRE STOPPING SYSTEM AT UTILITIES THRU ONE-HOUR FIRE RATED FLOOR/CEILING ASSEMBLY PER DETAIL 16-AS. FLUR AROUND UTILITIES WITHIN APARTMENT ONLY AFTER FIRE STOPPING SYSTEM INSTALLATION IS COMPLETE.

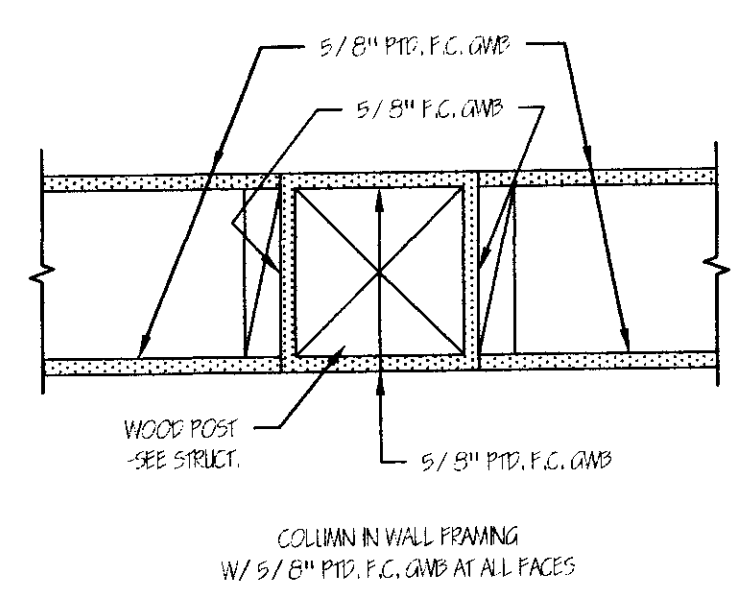
LEGEND	
SYMBOL	DESCRIPTION
	NEW WALL
	NEW WALL/EXISTING WALL W/INFILL
	EXISTING WALL
	THIN LINEWEIGHT DENOTES EXISTING CONDITIONS
	HEAVY LINEWEIGHT DENOTES NEW CONDITIONS
	DEMOLISHED OR REMOVED STRUCTURE OR EQUIPMENT



TYPICAL FIRE RATED COLUMN DETAILS



TYPICAL FIRE RATED COLUMN DETAILS



TYPICAL FIRE RATED COLUMN DETAILS