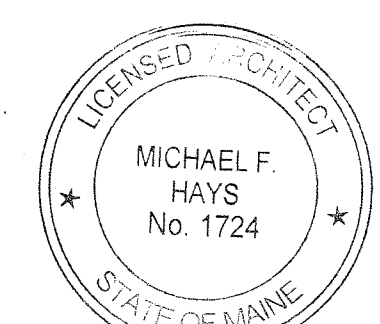


GRANT HAYS ASSOCIATES
 ARCHITECTURE & INTERIOR DESIGN
 P.O. BOX 6179 FALMOUTH MAINE 04103
 207.871.5900 www.granthays.com



Michael F. Hays
 REV./NOV

▲ 10.15.2015
 ▲ 10.15.2015

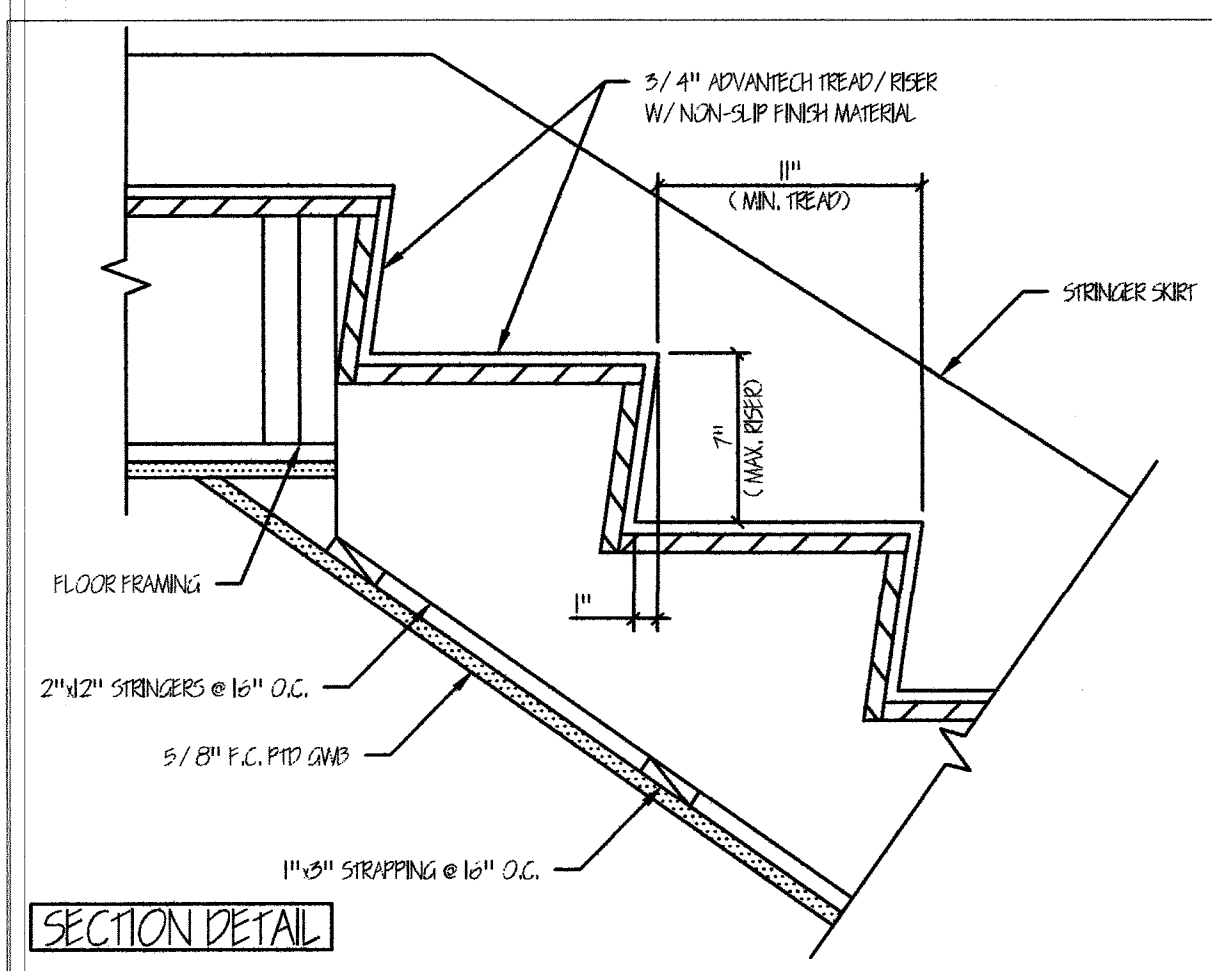
PROJECT NAME
6 UNIT APARTMENT/COMMERICAL
223 CUMBERLAND AVENUE
 225 CUMBERLAND AVENUE, LLC.
 477 CONGRESS STREET
 PORTLAND, MAINE 04101

DETAILS & SCHEDULES

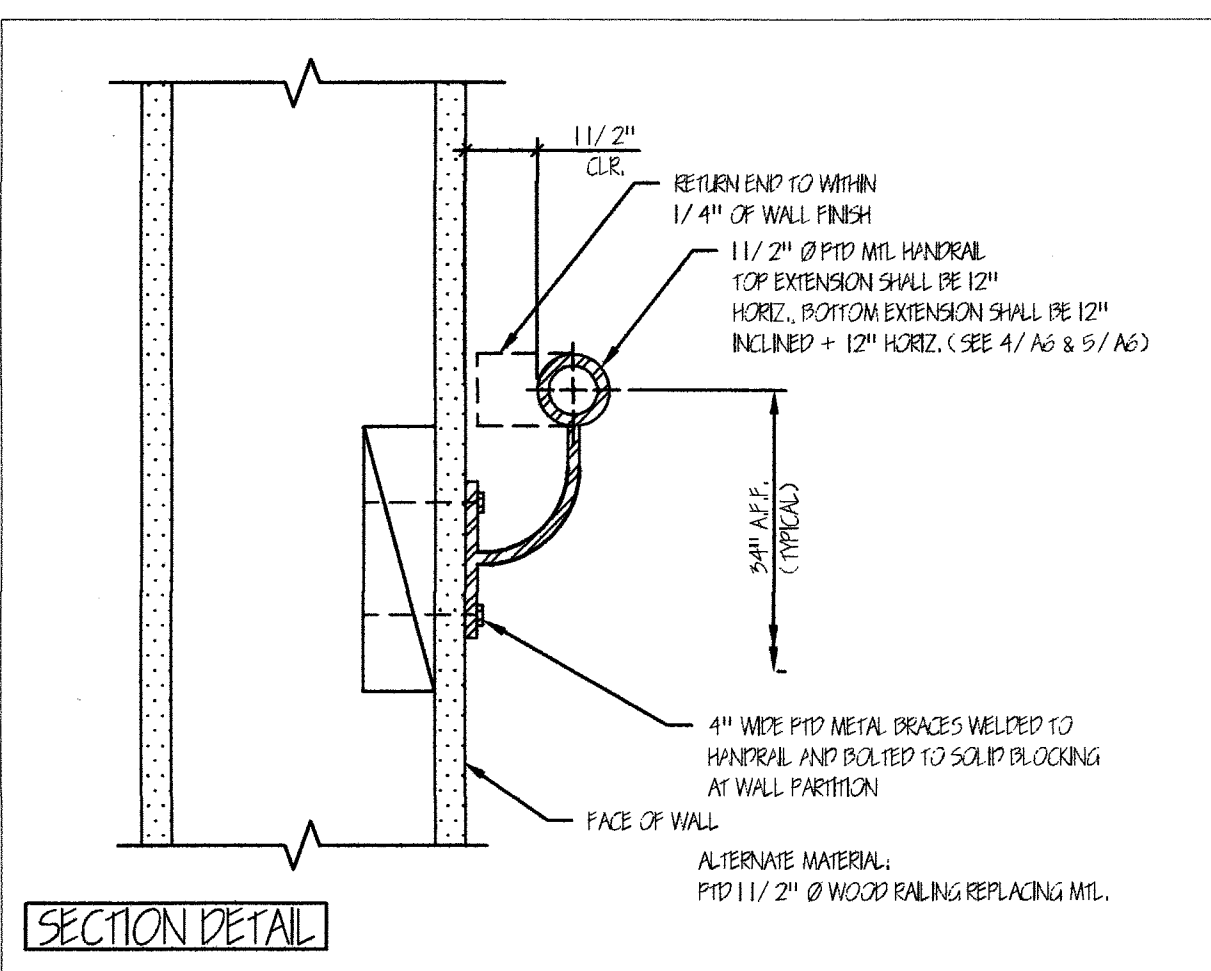
DATE
 29/EPT 2015
 SCALE
 1/4"=1'-0"
 DRAWN
 JAM/MFH
 JOB NO.
 150904
 SHEET

A5

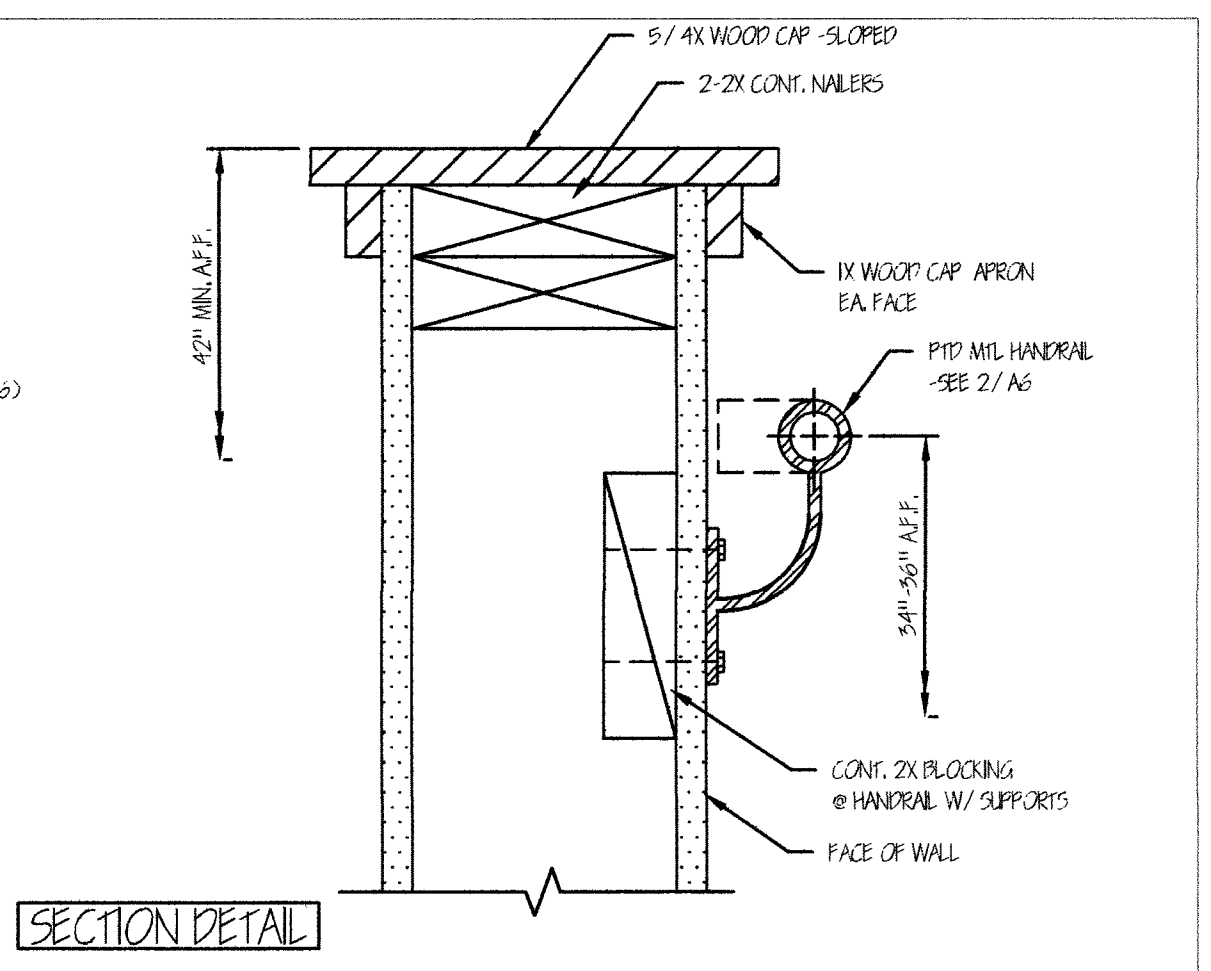
COPYRIGHT REPRODUCTION OR REV. OF THIS DOCUMENT WITHOUT WRITTEN PERMISSION FROM GRANT HAYS ASSOCIATES IS PROHIBITED.



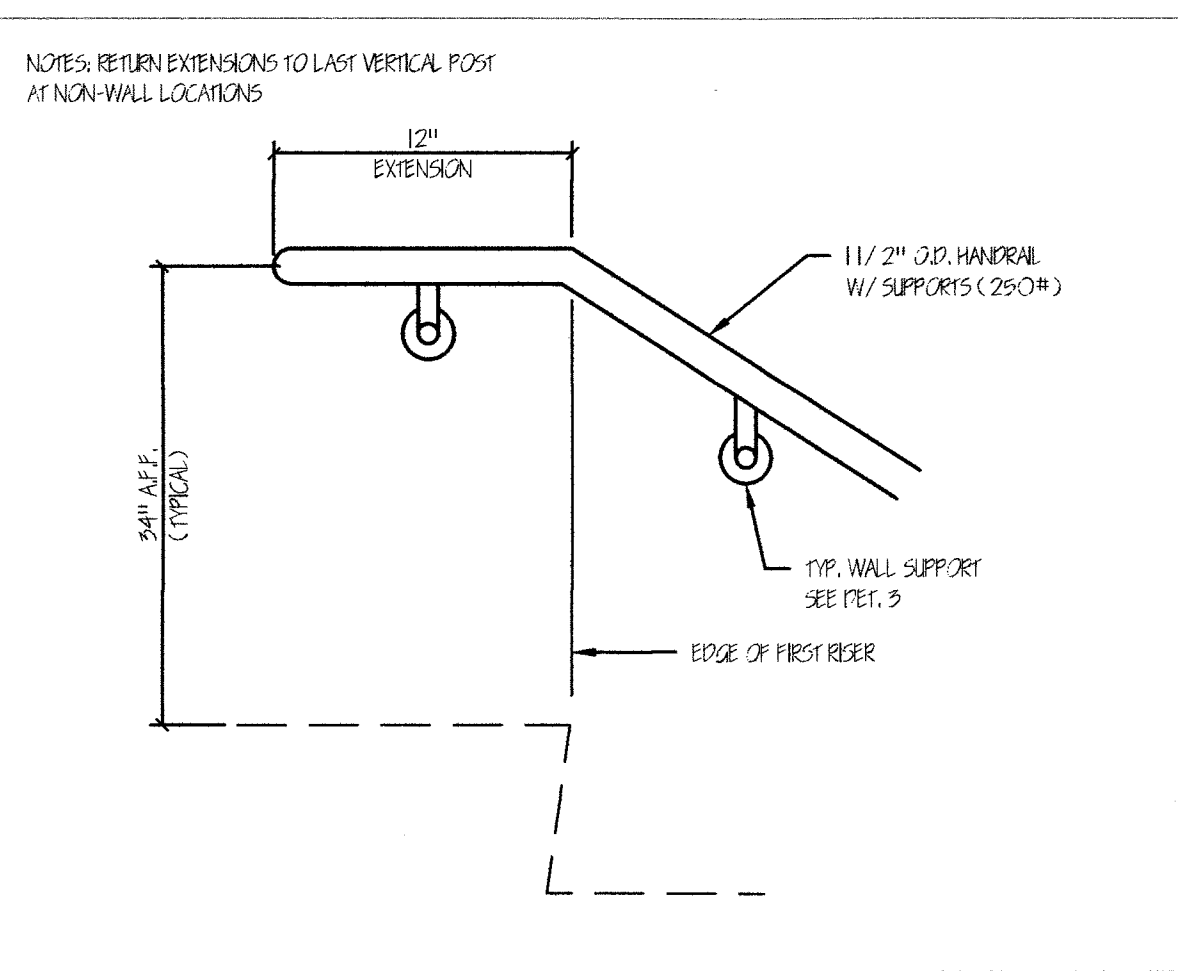
1 INTERIOR STAIR RISER/TREAD DETAIL 1 1/2"=1'-0"



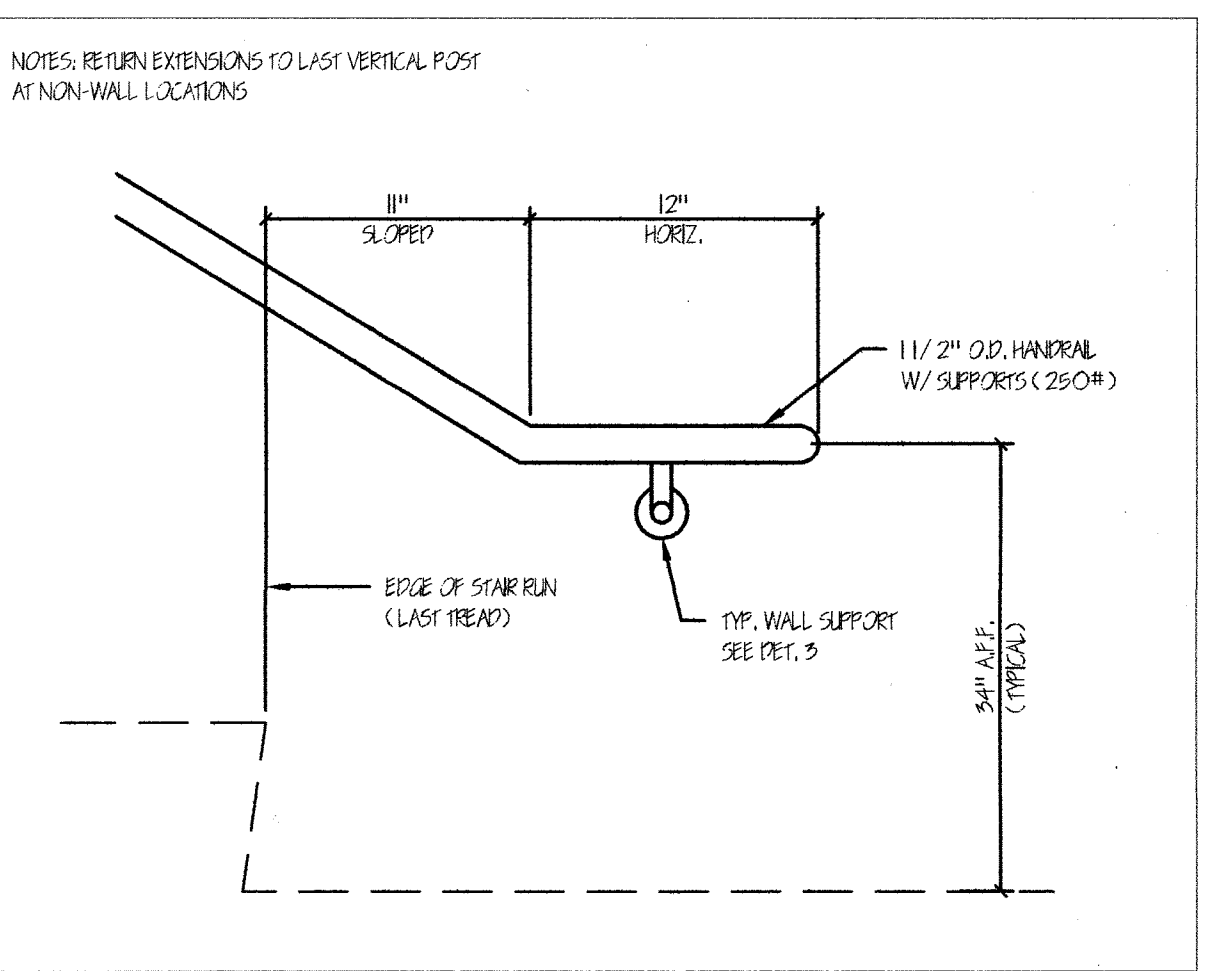
2 TYPICAL WALL HANDRAIL SECTION 3"=1'-0"



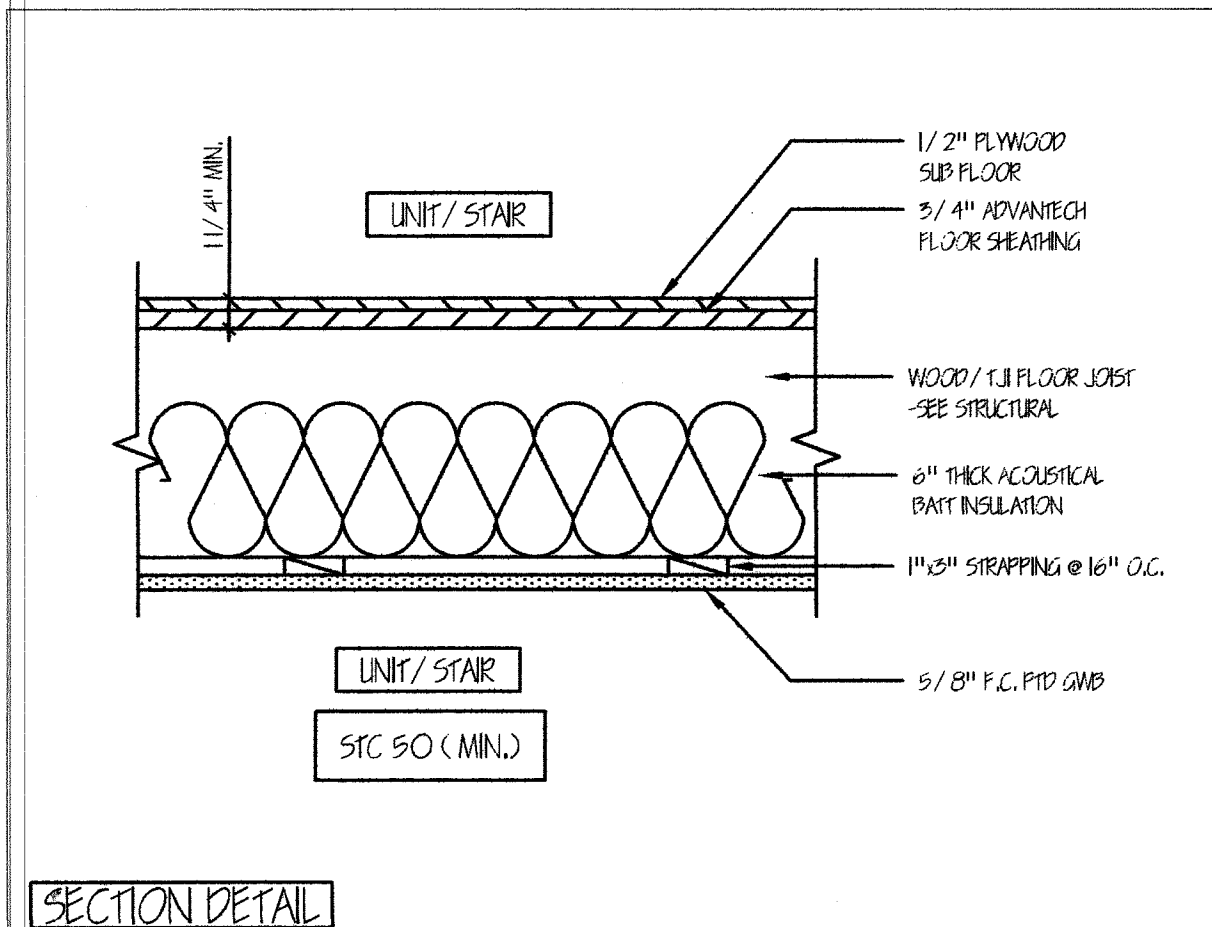
3 HALF WALL W/ STAIR GUARDRAIL 3"=1'-0"



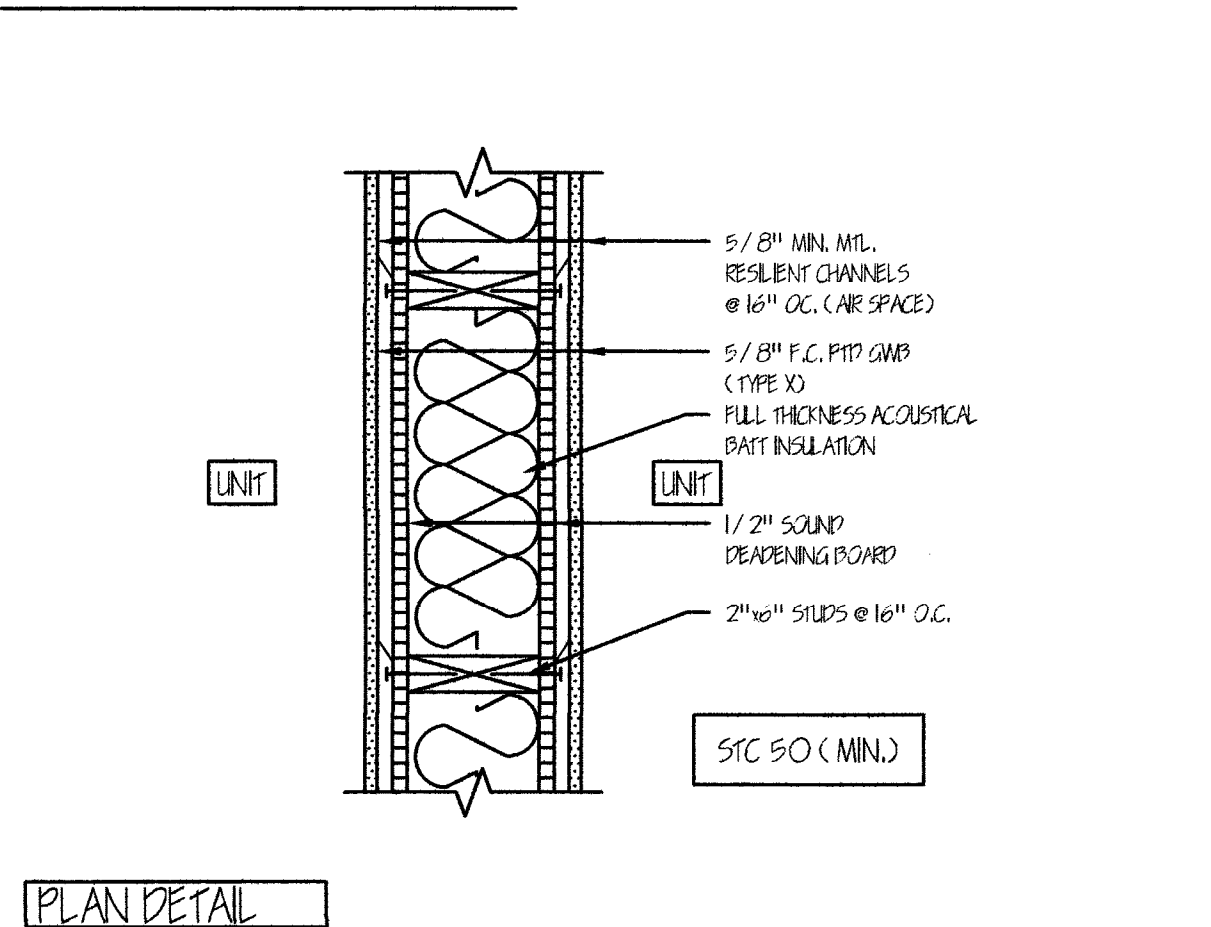
4 TYPICAL WALL HANDRAIL-TOP 3"=1'-0"



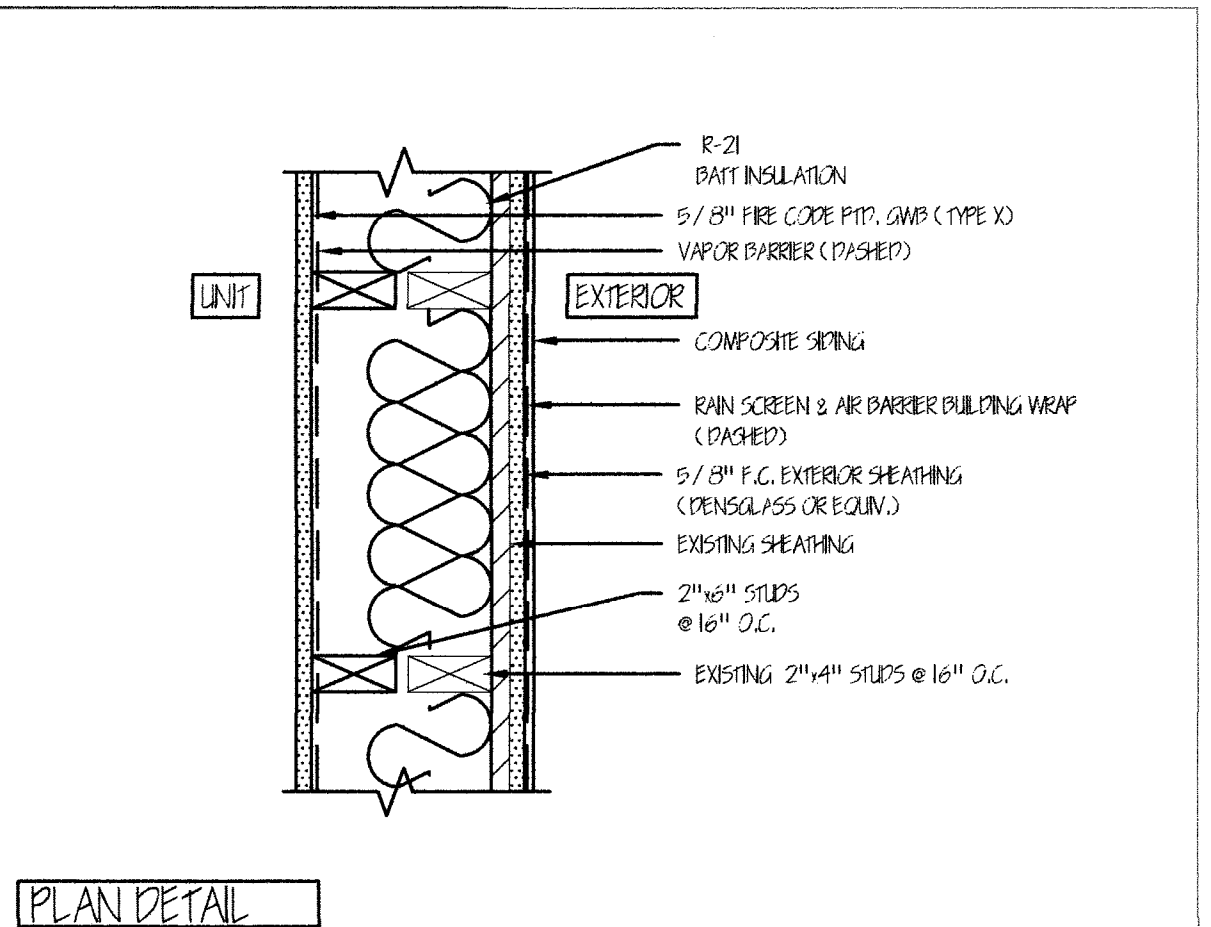
5 TYPICAL WALL HANDRAIL-BOTTOM 3"=1'-0"



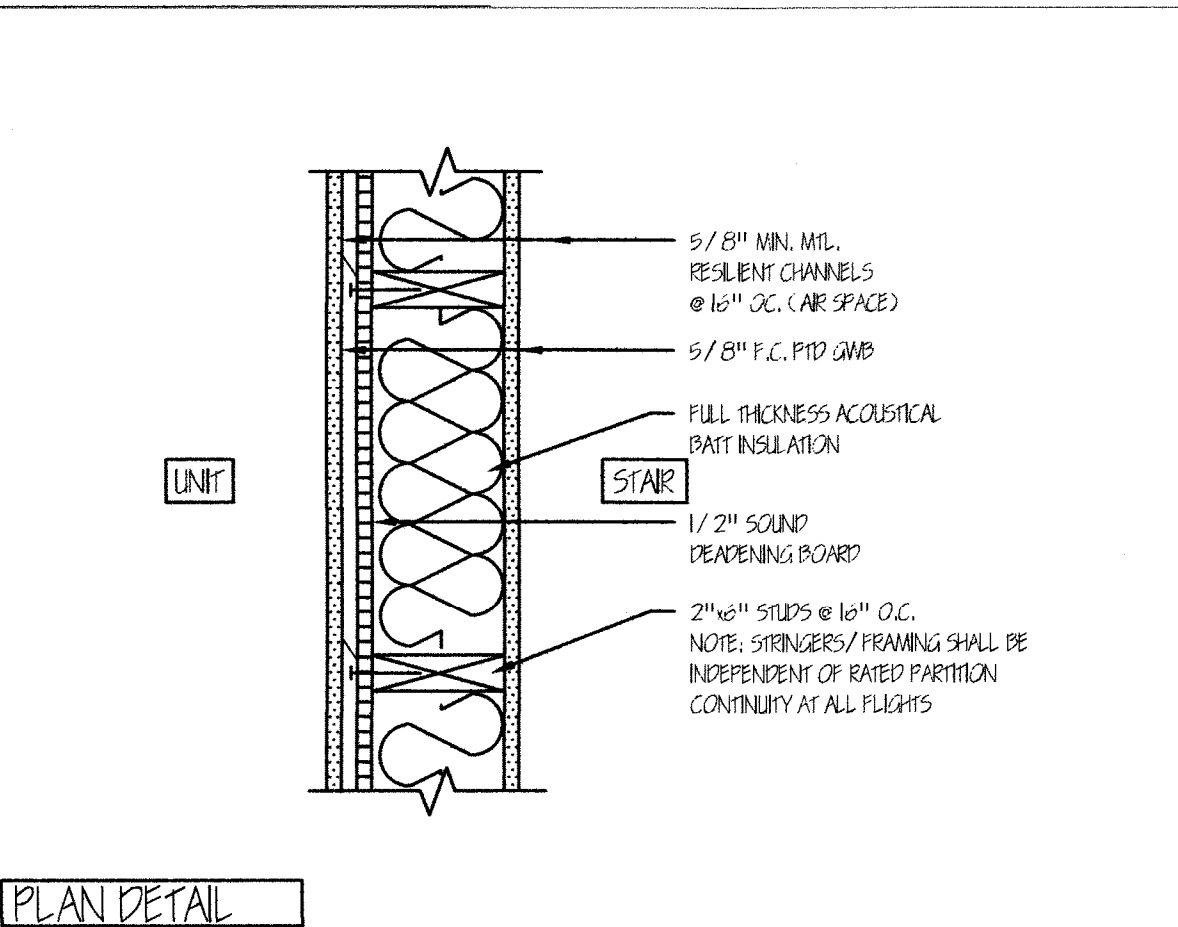
6 1 HR RATED FLOOR/CEILING ASSEMBLY 1 1/2"=1'-0"



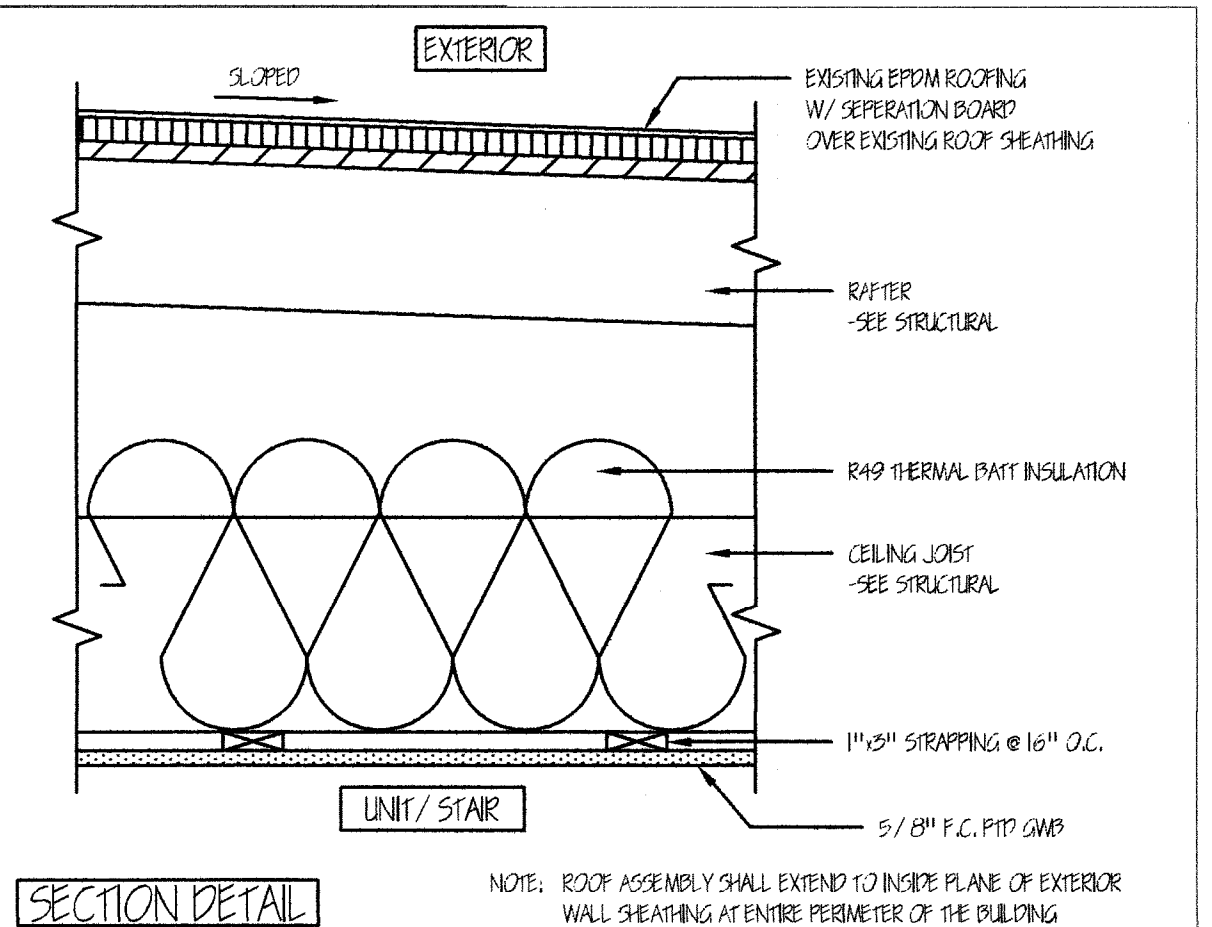
7 1 HR RATED SEPERATION PARTITION ASSEMBLY 1 1/2"=1'-0"



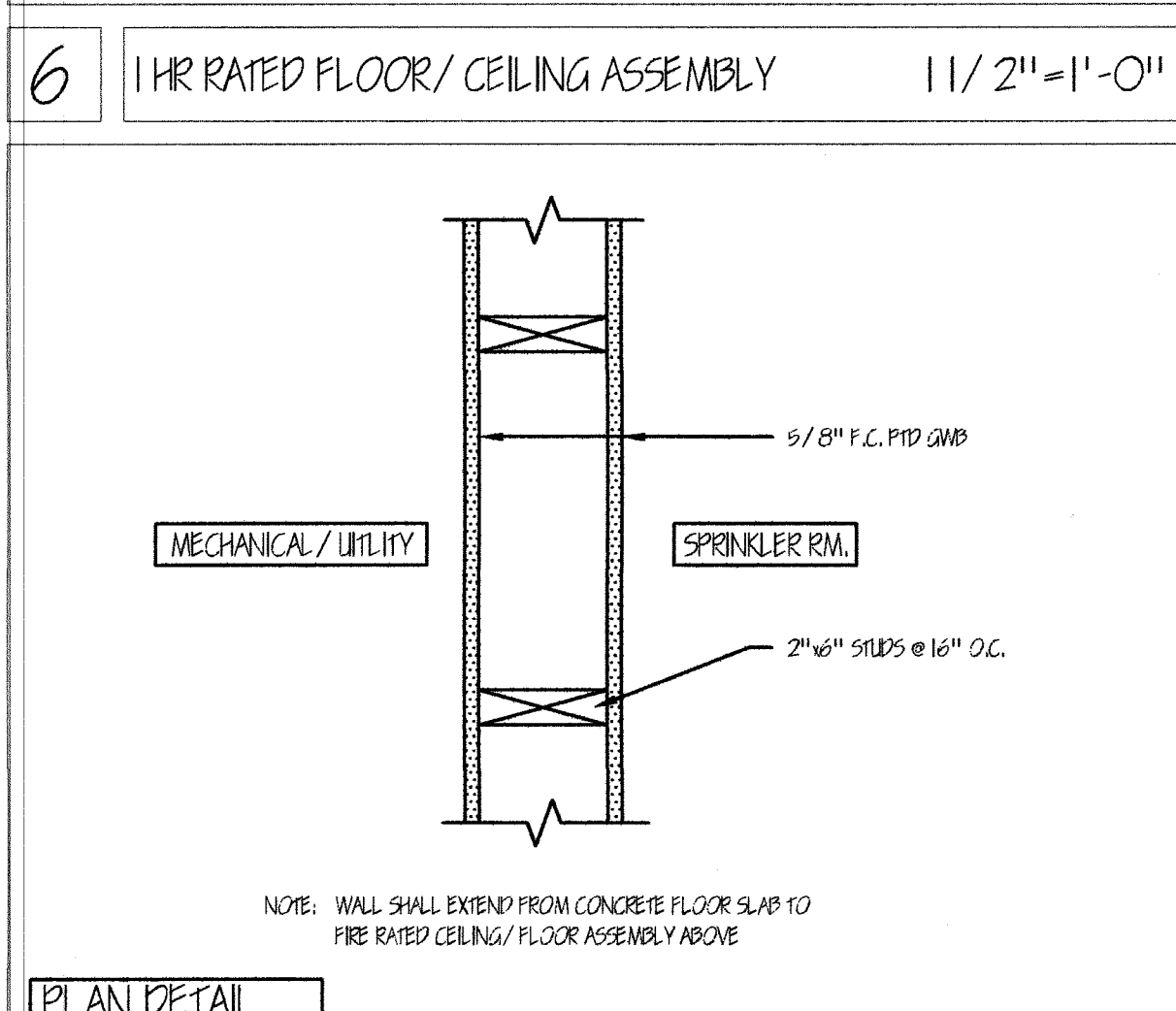
8 1 HR RATED EXTERIOR WALL ASSEMBLY 1 1/2"=1'-0"



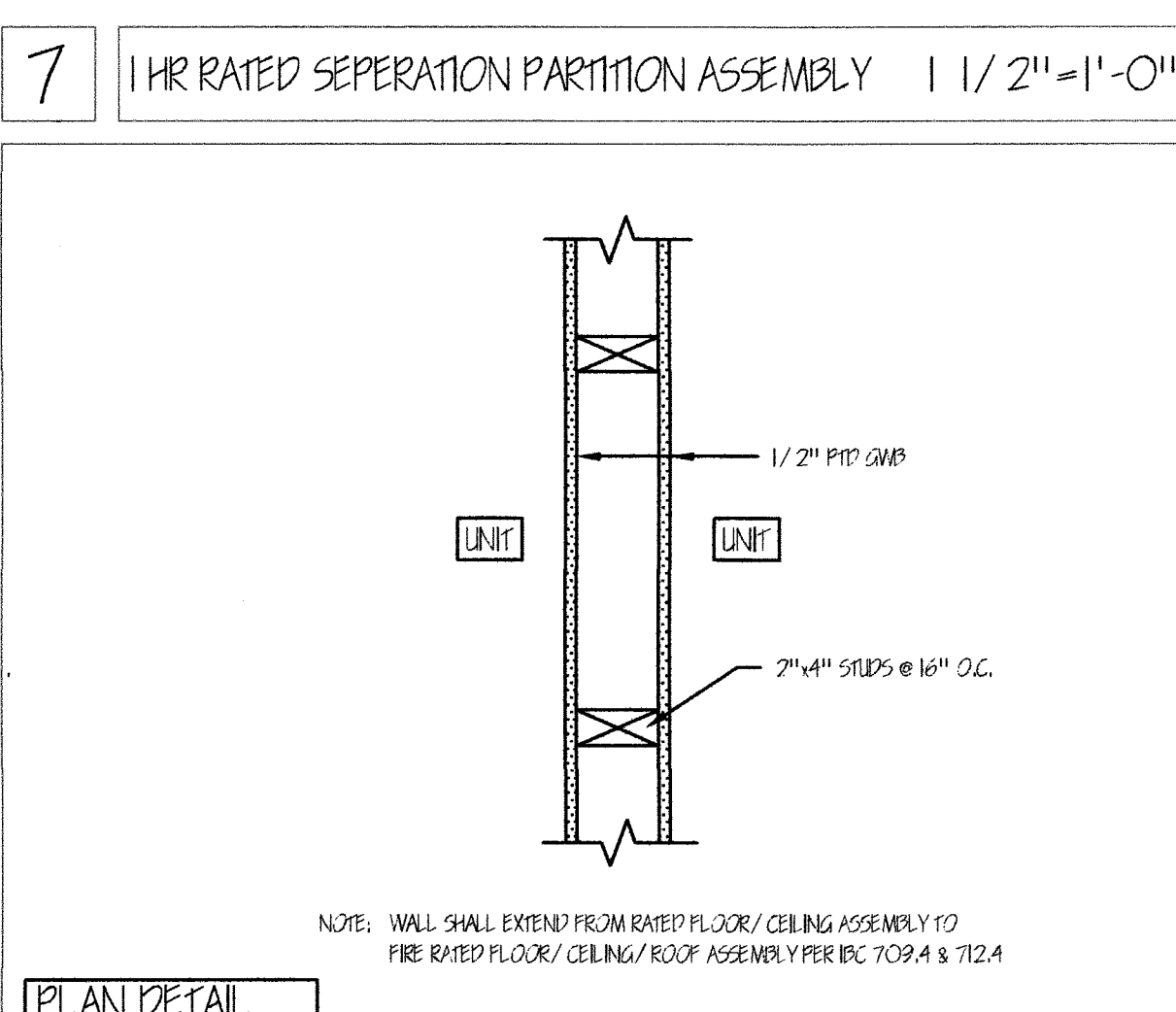
9 1 HR RATED PARTITION AT STAIR 1 1/2"=1'-0"



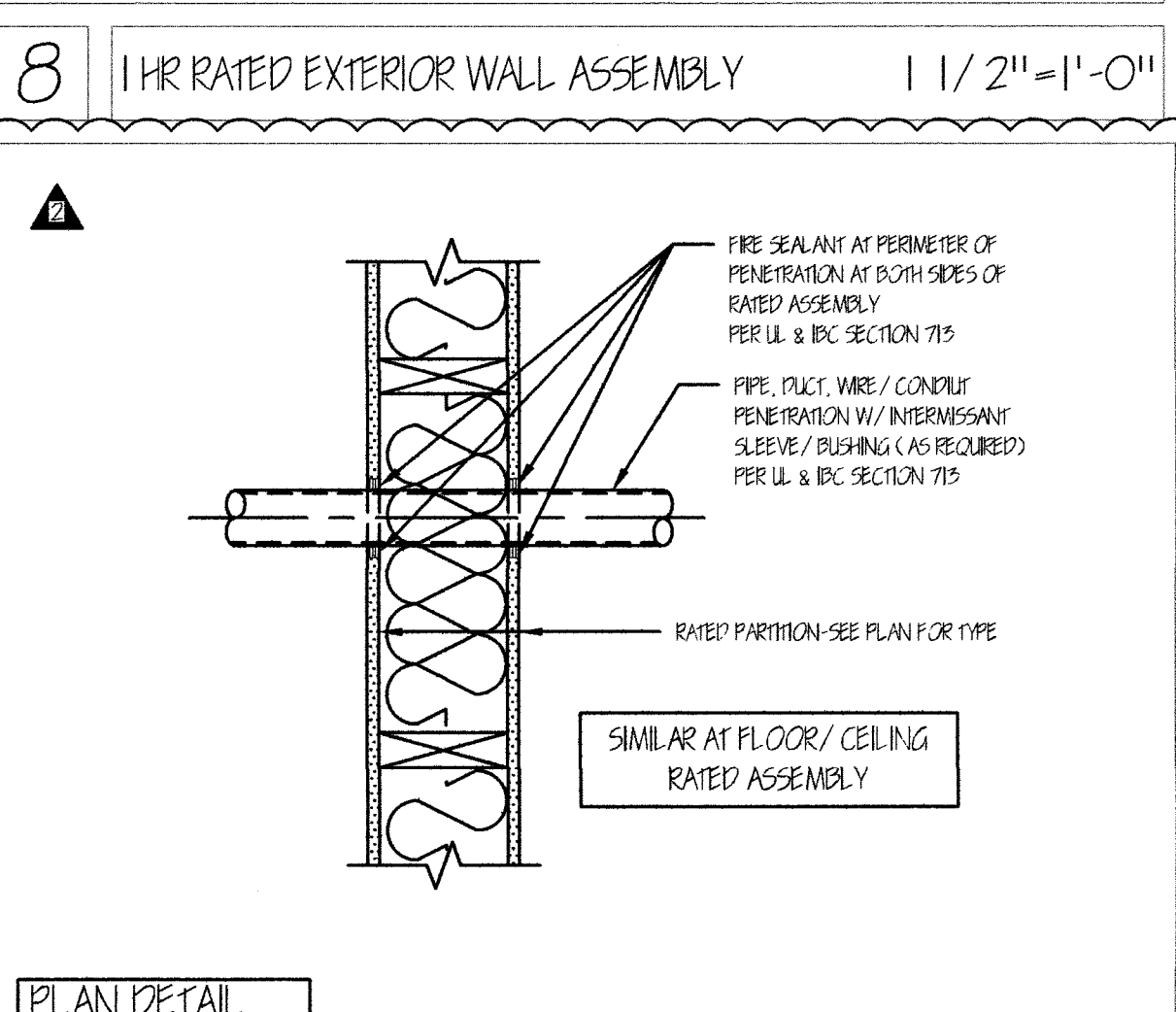
10 1 HR RATED CEILING/ROOF ASSEMBLY 1 1/2"=1'-0"



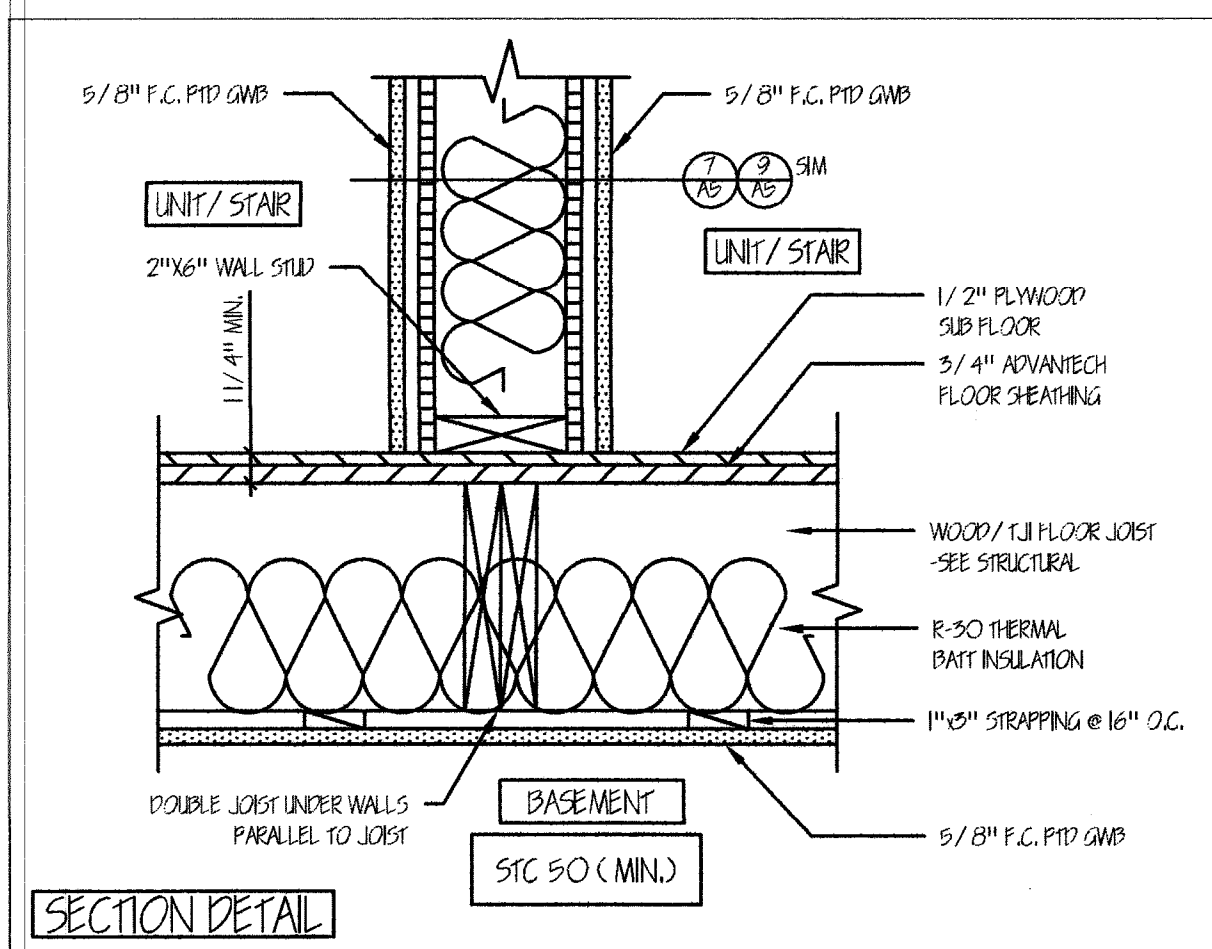
11 1 HR RATED PARTITION WALL 1 1/2"=1'-0"



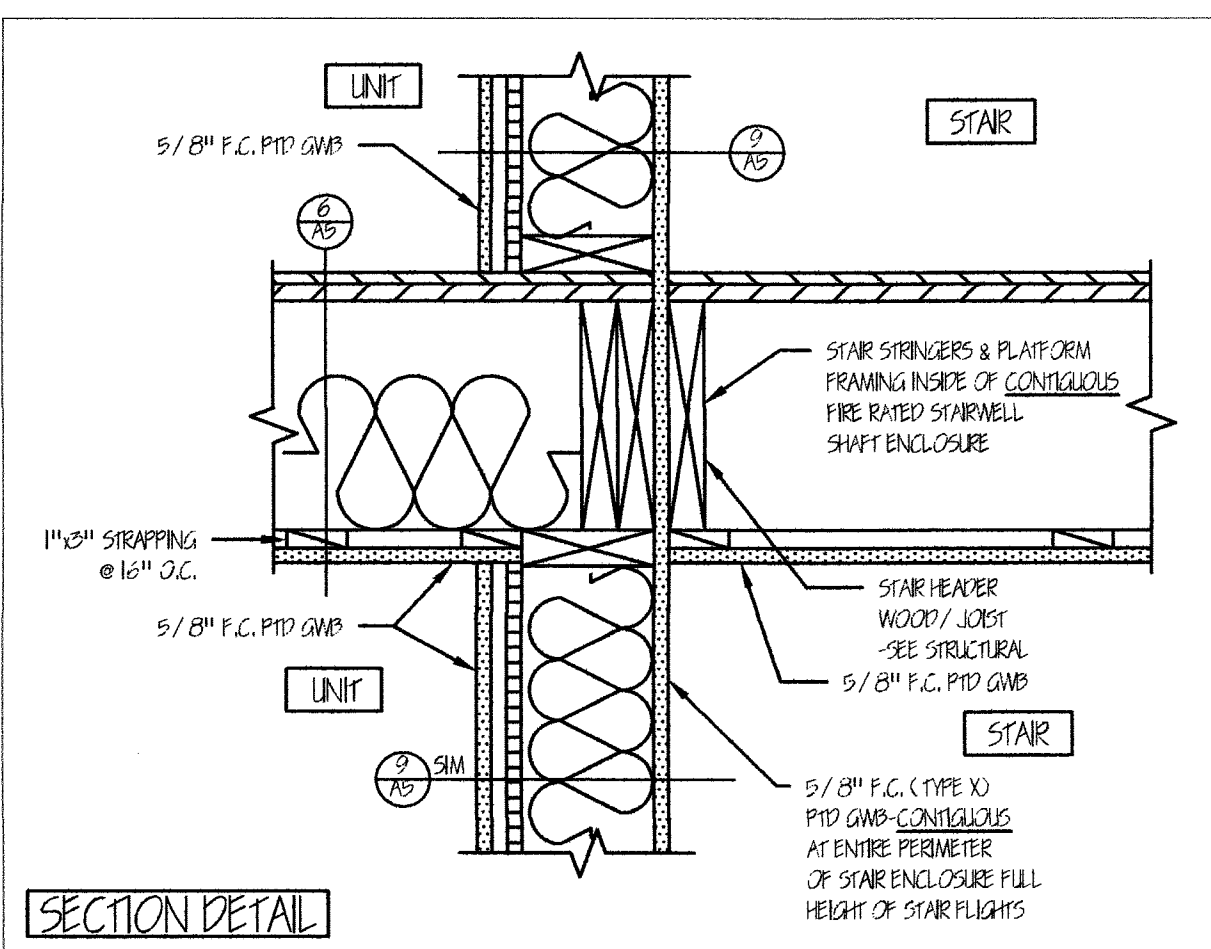
13 NON-RATED INTERIOR PARTITION WALL 1 1/2"=1'-0"



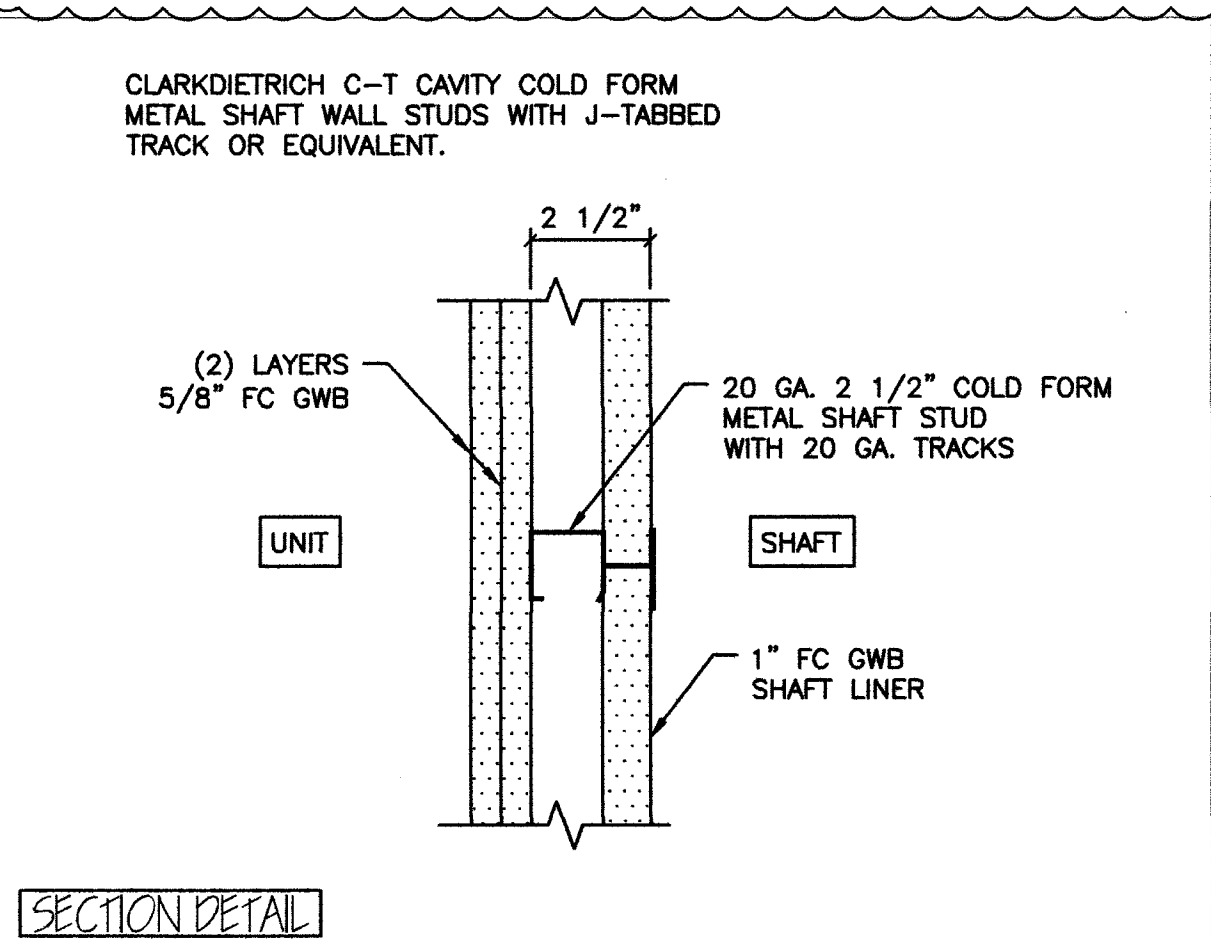
16 FIRE SEALANT @ PENETRATIONS 1 1/2"=1'-0"



12 1 HR RATED FIRST FLOOR ASSEMBLY 1 1/2"=1'-0"



14 1 HR RATED UNIT/STAIR SEPERATION @ 1 HR FIRE RATED FLOOR/CEILING ASSEMBLY 1 1/2"=1'-0"



15 2 HR RATED SHAFT WALL 1 1/2"=1'-0"

NOTE: SEE FLOOR PLANS FOR UNIT INTERIOR DOOR SIZES, SWING AND TYPE

DOOR SCHEDULE						
NO.	SIZE (WxH)	INSUL.	FIRE RATING	HARDWARE	SWING	REMARKS
01	3'-0"x6'-3"	NONE	1 HR	HW-5	PER PLAN	* DOOR/FRAME ASSEMBLY, SELF CLOSING
02	3'-0"x6'-3"	NONE	1 HR	HW-5	PER PLAN	* DOOR/FRAME ASSEMBLY, SELF CLOSING
03	3'-0"x6'-3"	R-7	NONE	HW-1	PER PLAN	
04	3'-0"x6'-3"	R-7	NONE	HW-1	PER PLAN	
05	3'-0"x6'-3"	R-7	NONE	HW-1	PER PLAN	
06	3'-0"x6'-3"	R-7	1 HR	HW-2	PER PLAN	* DOOR/FRAME ASSEMBLY, SELF CLOSING
07	3'-0"x6'-3"	NONE	NONE	HW-5	PER PLAN	
08	3'-0"x6'-3"	NONE	NONE	HW-4	PER PLAN	
09	3'-0"x6'-3"	R-7	1 HR	HW-2	PER PLAN	* DOOR/FRAME ASSEMBLY, SELF CLOSING
10	3'-0"x6'-3"	R-7	1 HR	HW-2	PER PLAN	* DOOR/FRAME ASSEMBLY, SELF CLOSING
11	3'-0"x6'-3"	R-7	1 HR	HW-2	PER PLAN	* DOOR/FRAME ASSEMBLY, SELF CLOSING

NOTE: SEE FLOOR PLANS FOR UNIT INTERIOR DOOR SIZES, SWING AND TYPE

NO.	REMARKS
HW-1	3 BUTTS*, DOOR ENTRY LEVEL LOCKSET, THRESHOLD WEATHER STRIPPING, DOOR BOTTOM * GC OPTIONAL SELF CLOSING BUTTS OR DOOR CLOSERS
HW-2	3 BUTTS*, DOOR ENTRY LEVEL LOCKSET, THRESHOLD WEATHER STRIPPING, DOOR BOTTOM, FLOOR VEEVER * GC OPTIONAL SELF CLOSING BUTTS OR DOOR CLOSERS
INTERNAL UNIT DOORS	3 BUTTS, LATCH SET EXCEPT PRIVACY SET AT BATHROOMS
HW-3	3 BUTTS, LEVER PRIVACY LOCK SET
HW-4	3 BUTTS, LEVER OFFICE LOCK SET
HW-5	3 BUTTS*, FLOOR PASSAGE LEVER LATCH SET * GC OPTIONAL SELF CLOSING BUTTS OR DOOR CLOSERS

NOTE: SEE FLOOR PLANS FOR UNIT INTERIOR DOOR SIZES, SWING AND TYPE

WINDOW SCHEDULE						
NO.	SIZE (WxH)	TYPE	FIRE RATING	GLAZING	ROUGH OPENING (WxH)	REMARKS
A	6'-0"x6'-0"	FIXED	NONE	INSL. GL.	6'-0 1/2"x6'-0 1/2"	ANDERSEN OR EQUIV.
B	5'-6"x6'-0"	FIXED	NONE	INSL. GL.	5'-6 1/2"x6'-0 1/2"	ANDERSEN OR EQUIV.
C	3'-2"x4'-6"	FIXED	NONE	INSL. GL.	3'-2 1/2"x4'-6 1/2"	ANDERSEN OR EQUIV.
D	TW5046	DOUBLE-HUNG	NONE	INSL. GL.	5'-2 1/2"x4'-6 1/4"	ANDERSEN OR EQUIV. (CEBRSS WINDOW)
E	TW5046	DOUBLE-HUNG	NONE	TEMP. INSL. GL.	5'-2 1/2"x4'-6 1/4"	ANDERSEN OR EQUIV. (CEBRSS WINDOW)

WINDOW & DOOR SCHEDULE & HARDWARE SETS