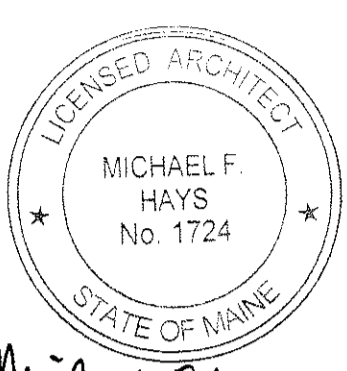


GRANT HAYS ASSOCIATES
 ARCHITECTURE & INTERIOR DESIGN
 P.O. BOX 6179 FALMOUTH MAINE 04103
 207.871.5900 www.granthays.com



Michael F. Hays
 REV/0/0/0/0

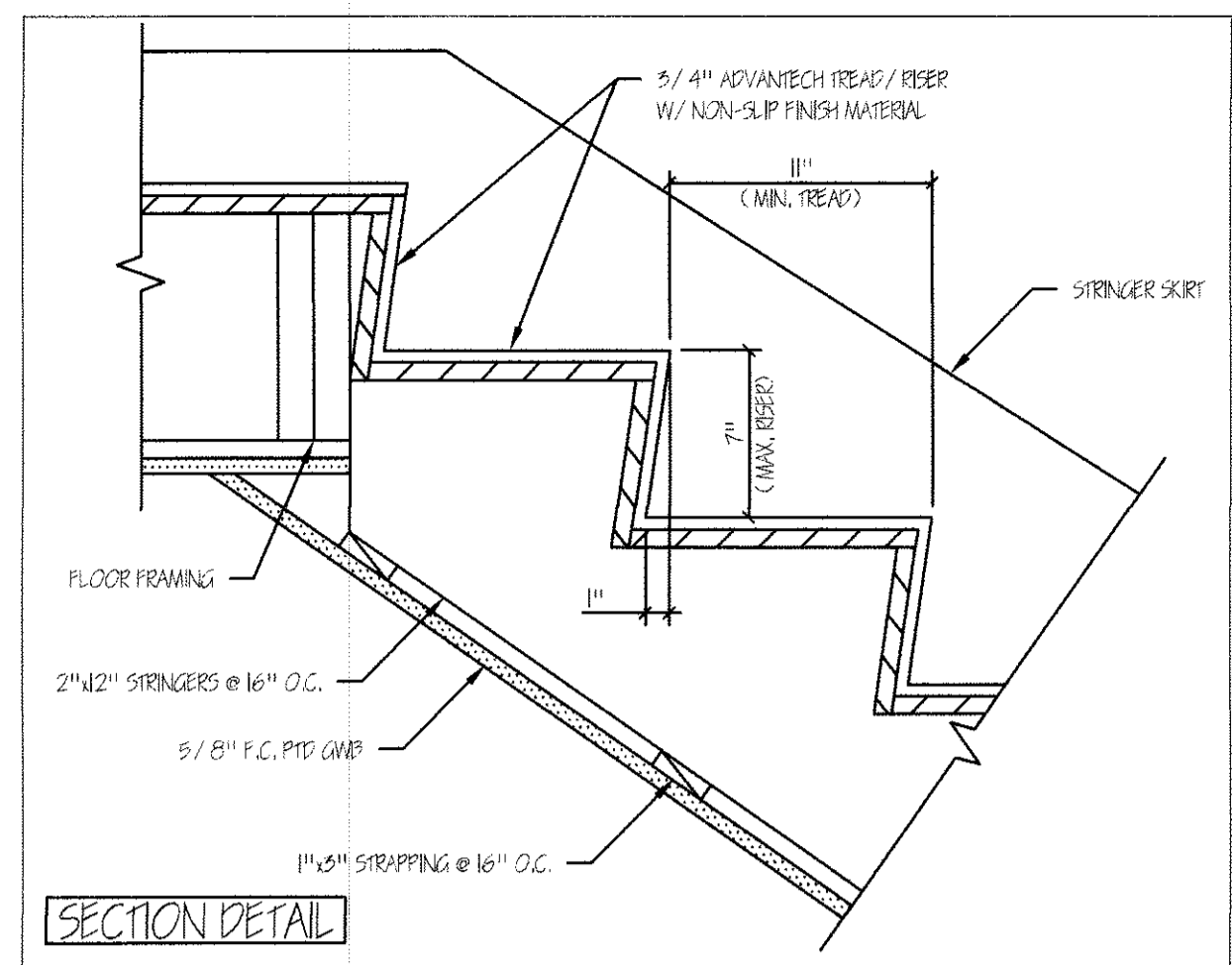
PROJECT NAME
6 UNIT APARTMENT/COMMERCIAL
223 CUMBERLAND AVENUE
 223 CUMBERLAND AVENUE L.L.C.
 477 CONGRESS STREET
 PORTLAND, MAINE 04101

DETAILS & SCHEDULES

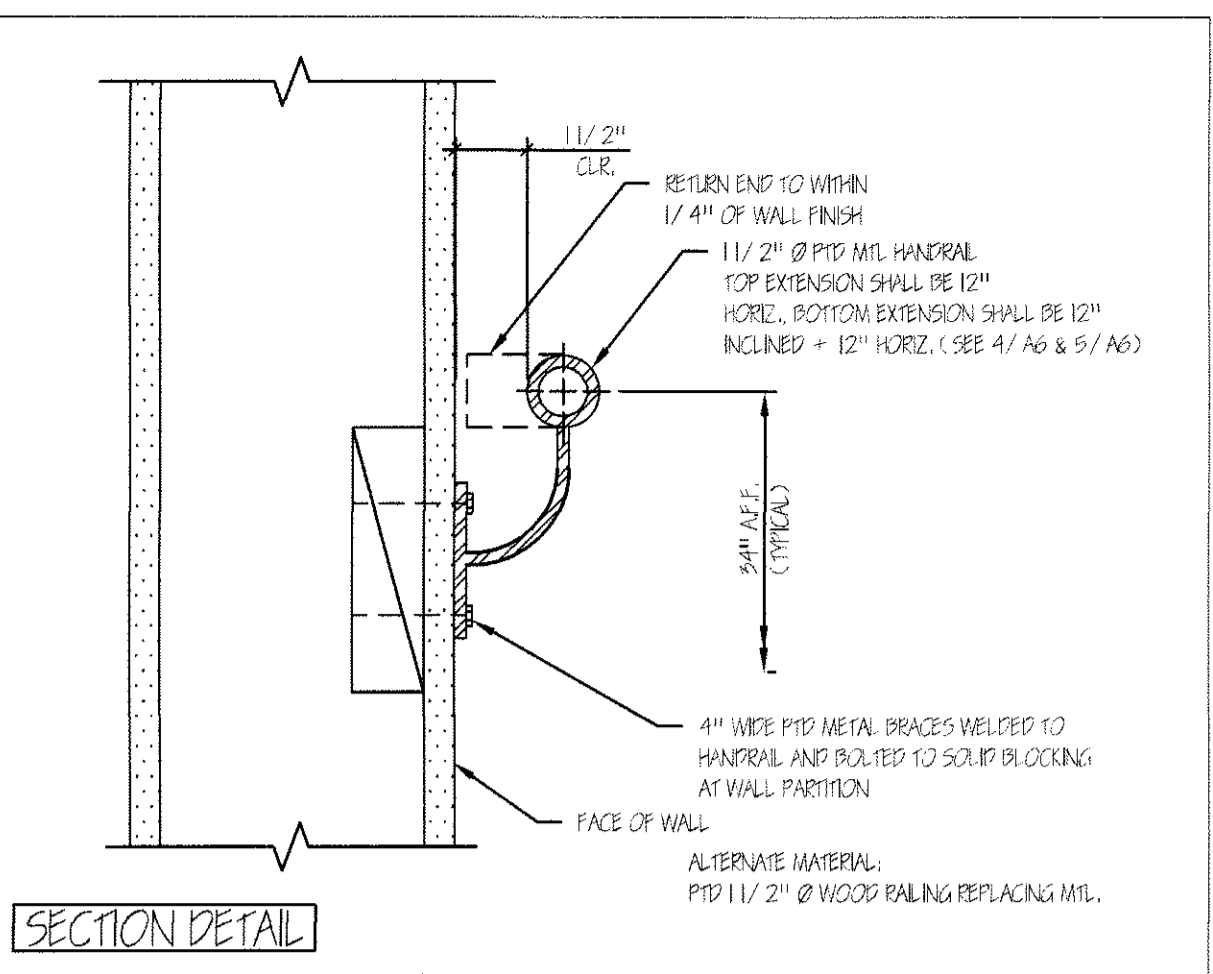
DATE: 29/SEPT 2015
 SCALE: 1/4"=1'-0"
 DRAWN: JAM/MFH
 JOB NO: 150904

A5

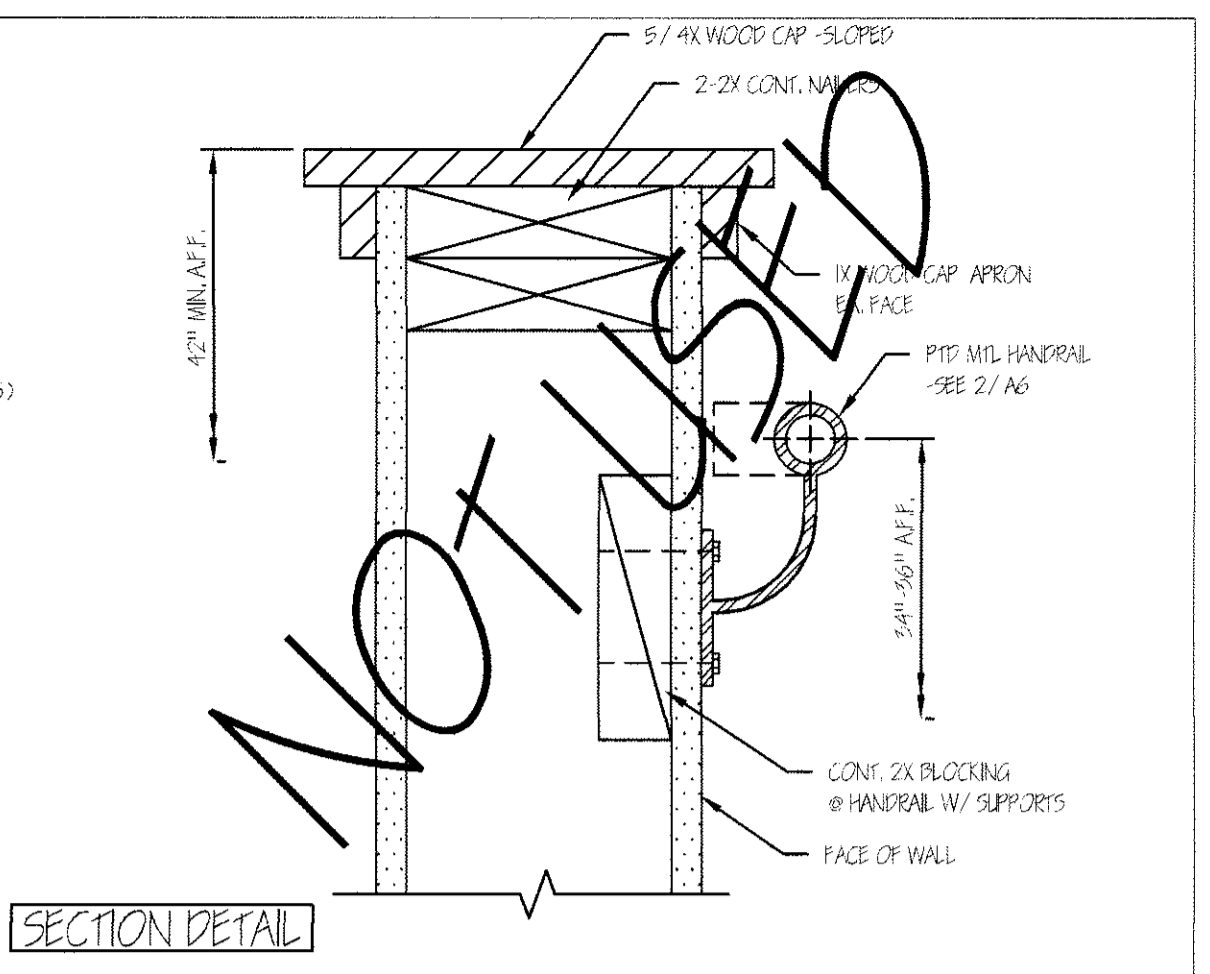
COPYRIGHT REPRODUCTION OR USE OF THIS DOCUMENT WITHOUT WRITTEN PERMISSION FROM GRANT HAYS ASSOCIATES IS PROHIBITED.



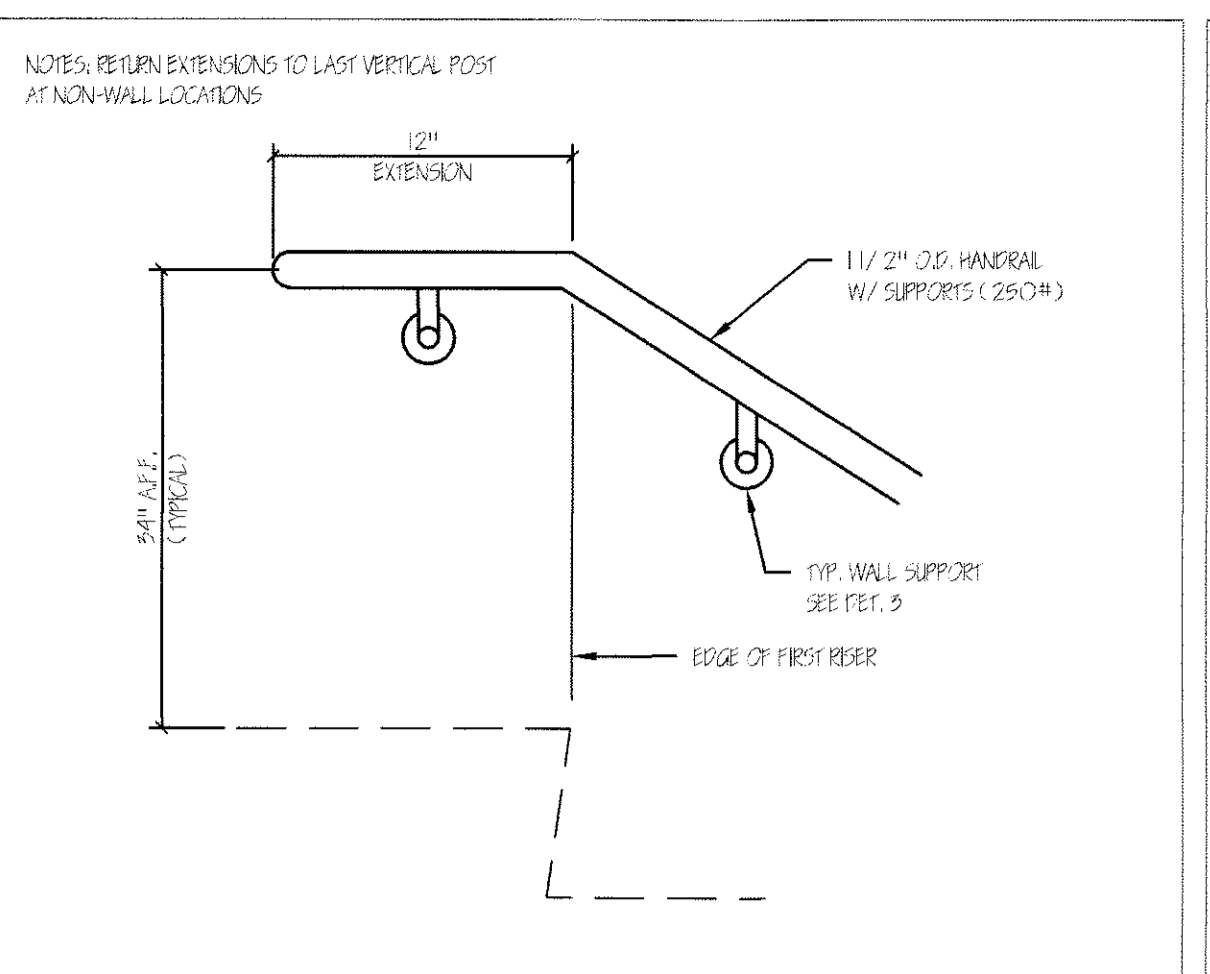
1 INTERIOR STAIR RISER/TREAD DETAIL 1 1/2"=1'-0"



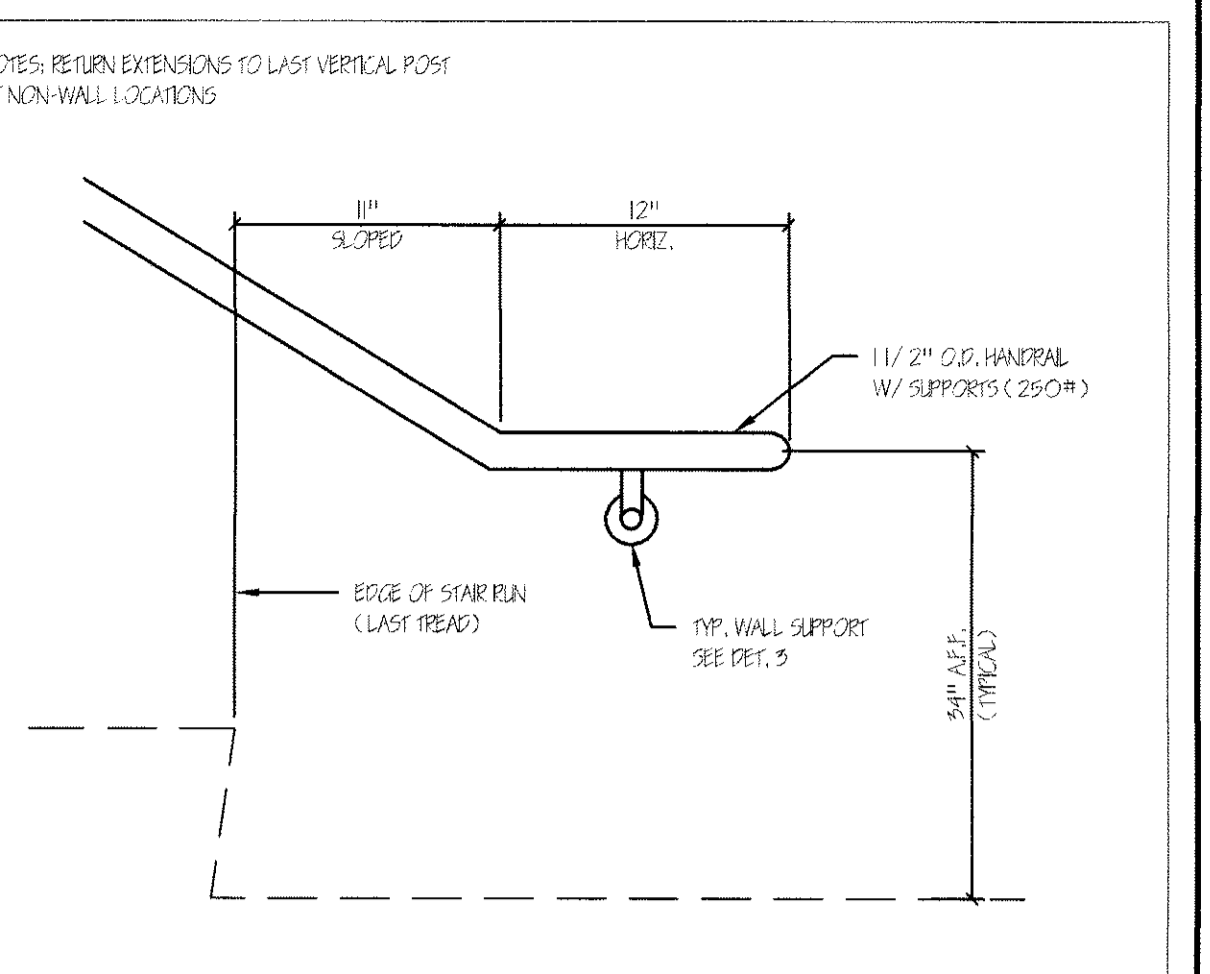
2 TYPICAL WALL HANDRAIL SECTION 3"=1'-0"



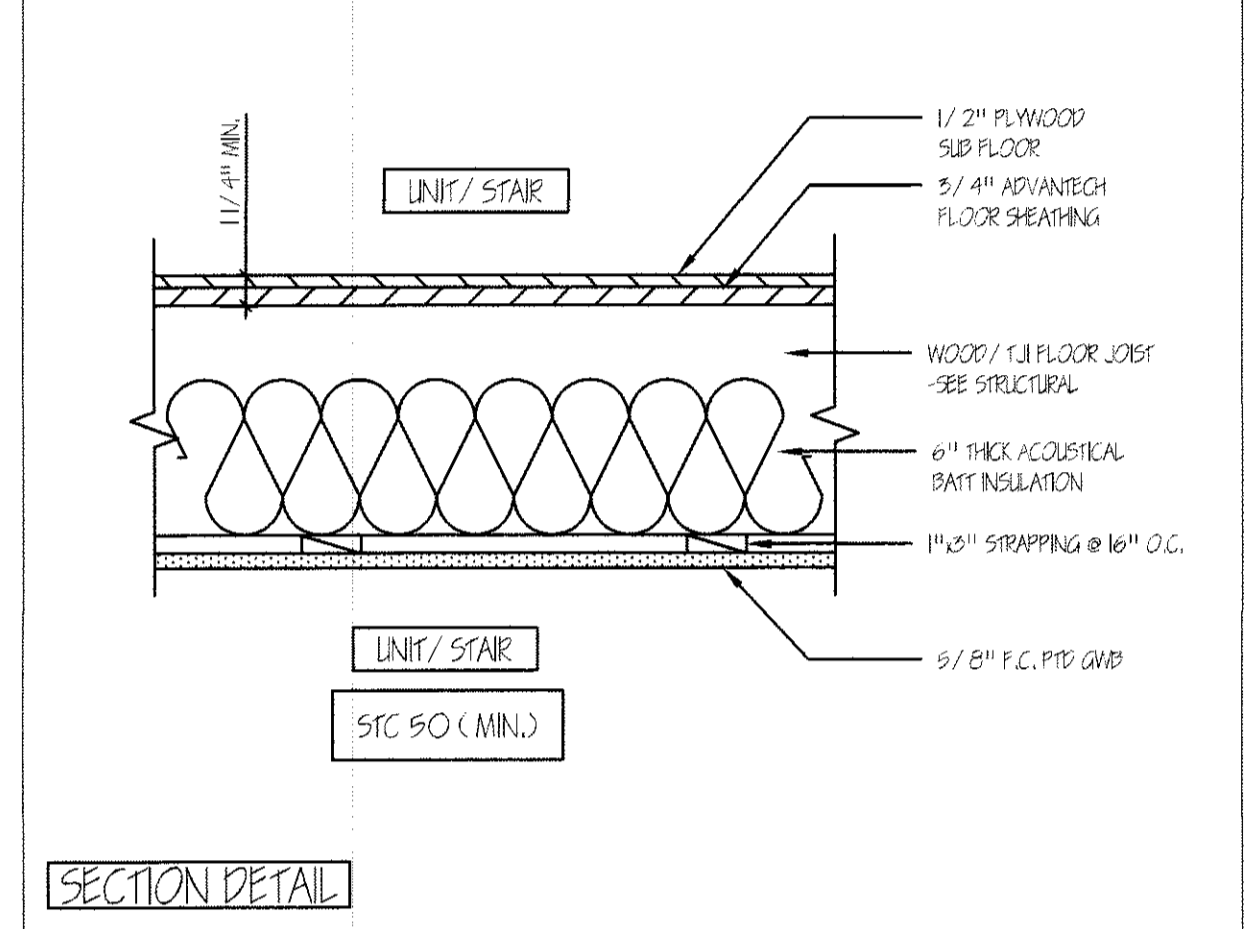
3 STAIR GUARDRAIL (NOT USED) 3"=1'-0"



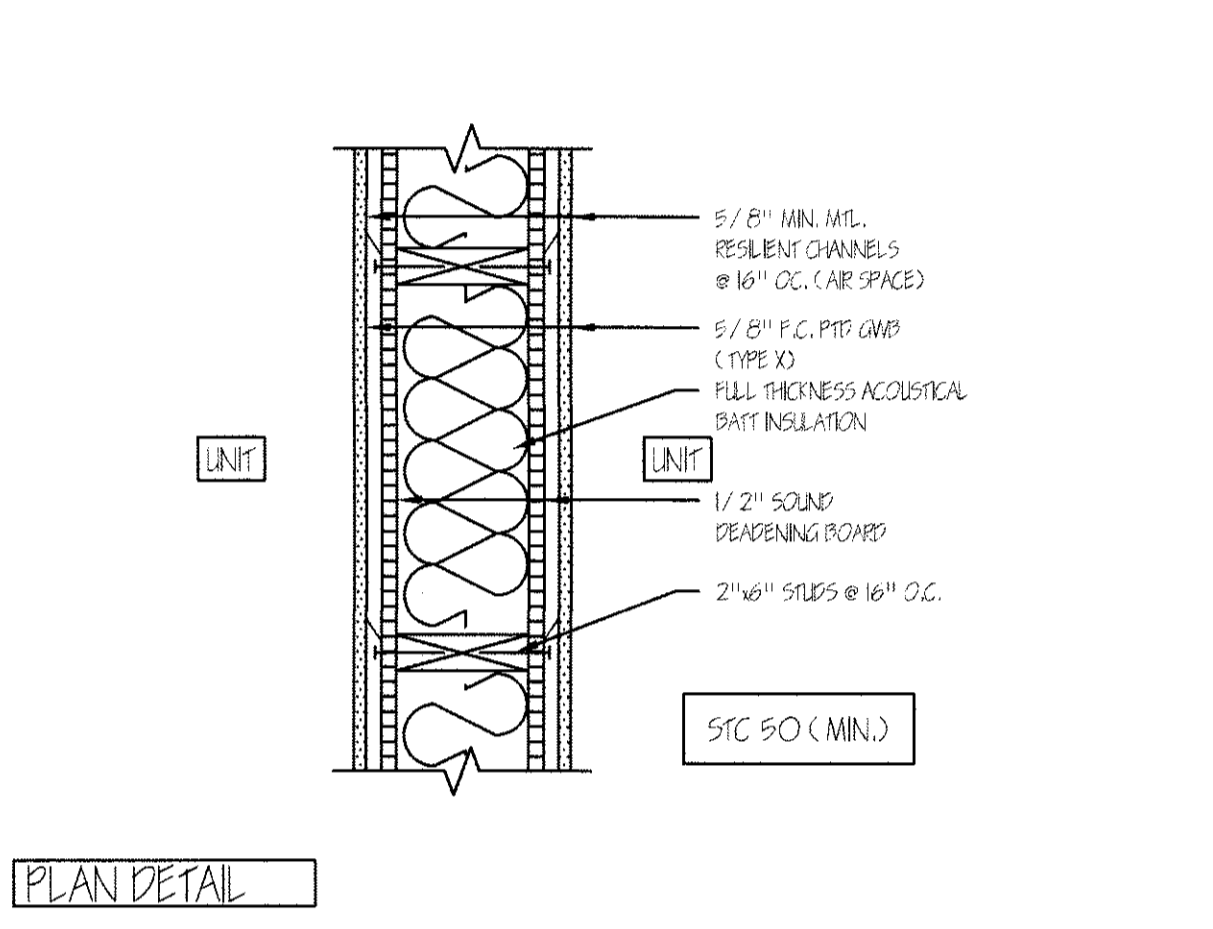
4 TYPICAL WALL HANDRAIL-TOP 3"=1'-0"



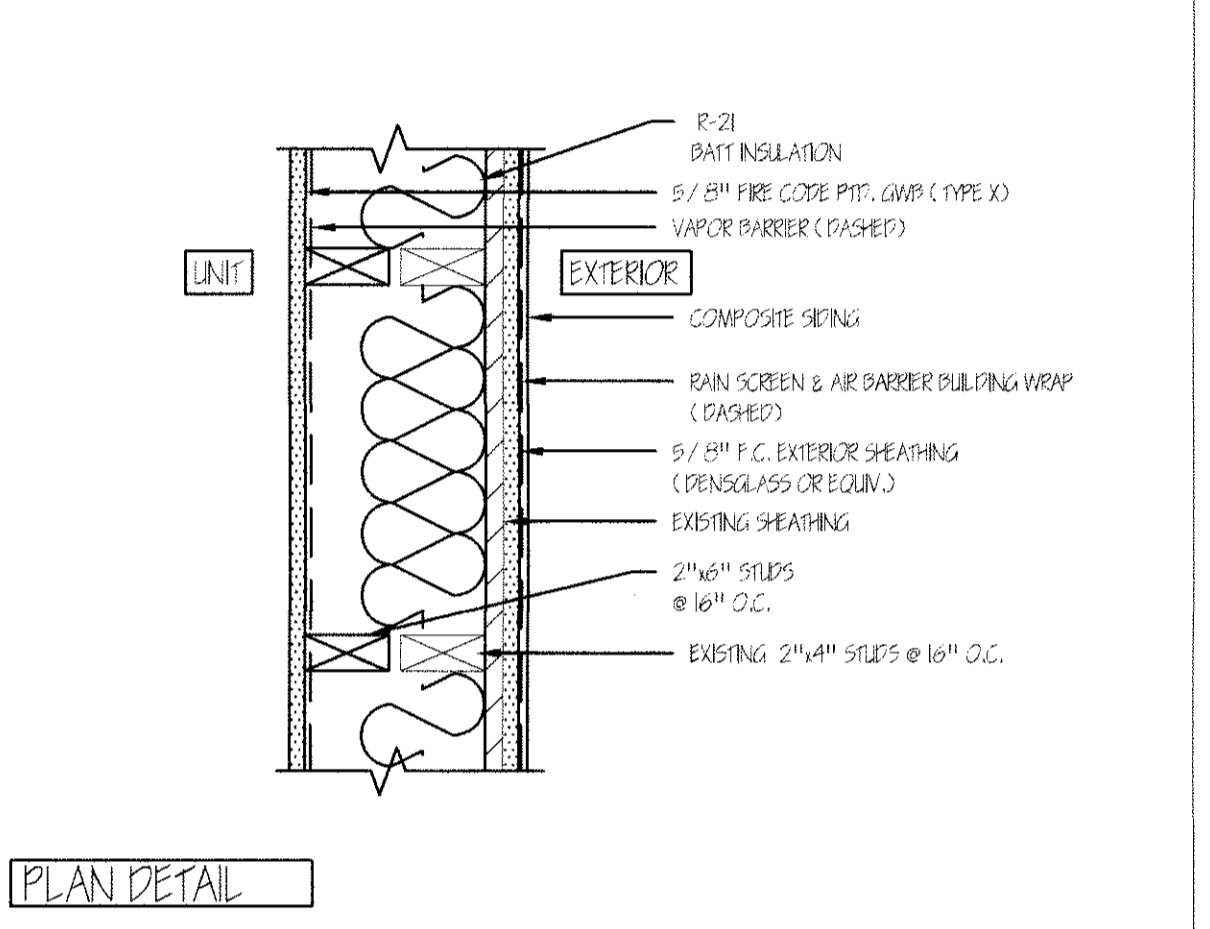
5 TYPICAL WALL HANDRAIL-BOTTOM 3"=1'-0"



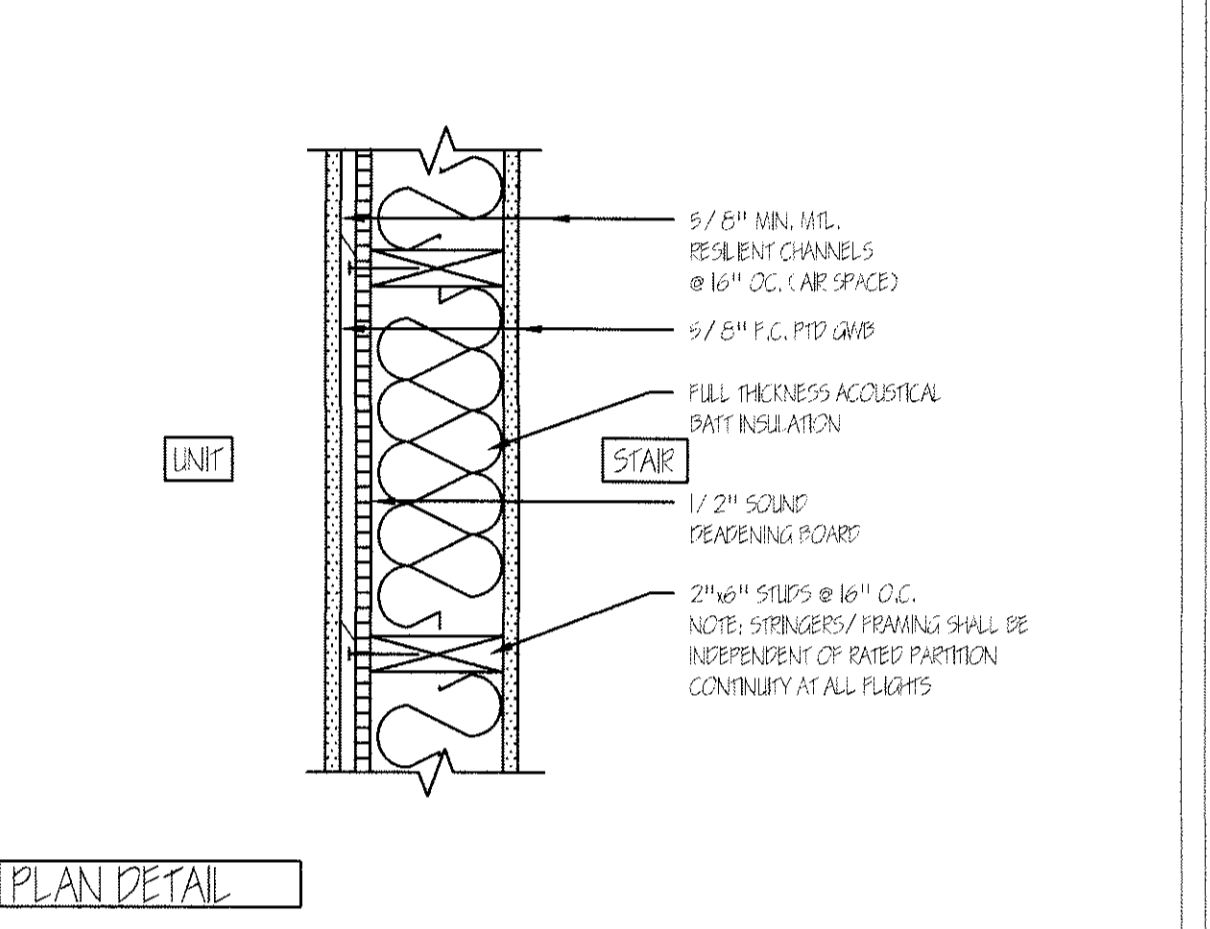
6 1 HR RATED FLOOR/CEILING ASSEMBLY 1 1/2"=1'-0"



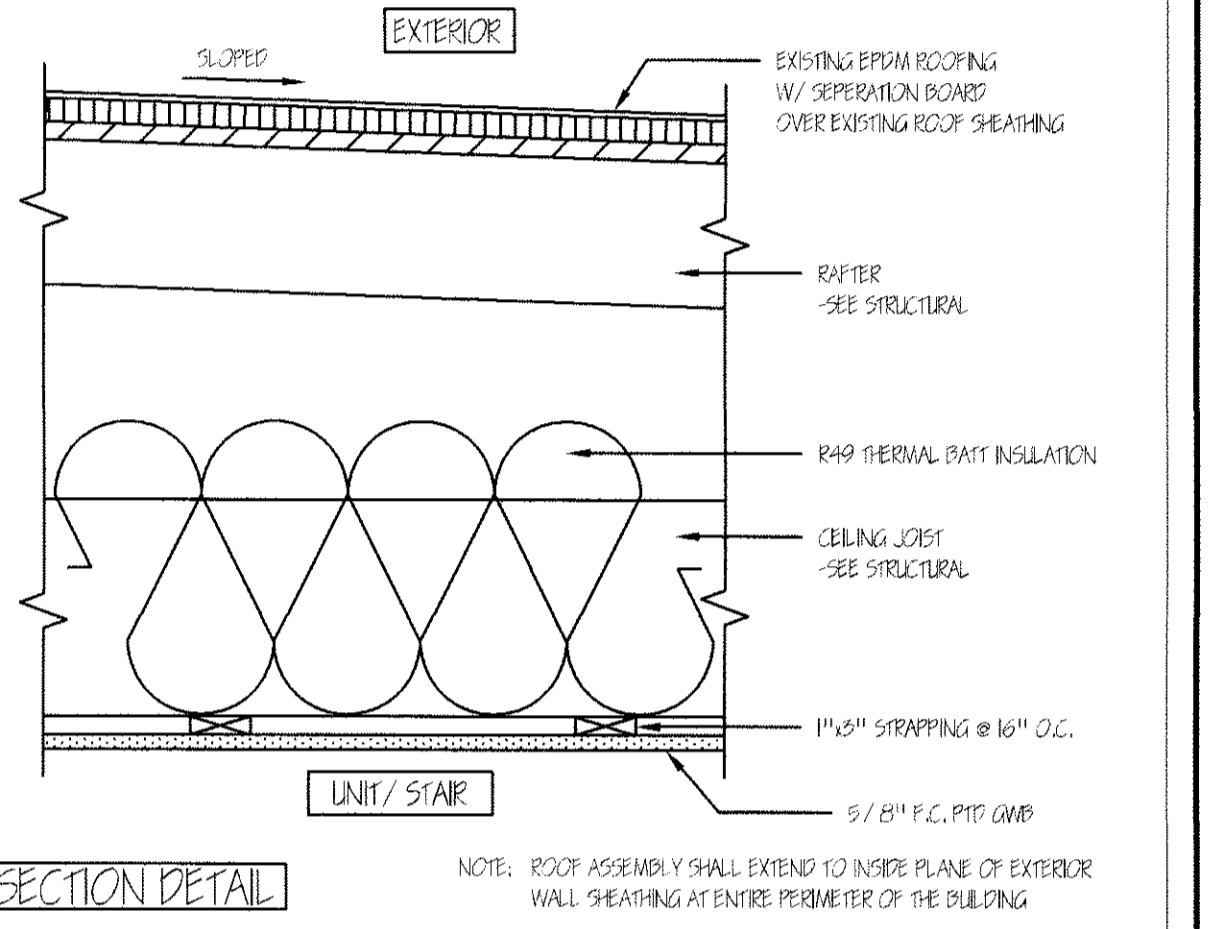
7 1 HR RATED SEPERATION PARTITION ASSEMBLY 1 1/2"=1'-0"



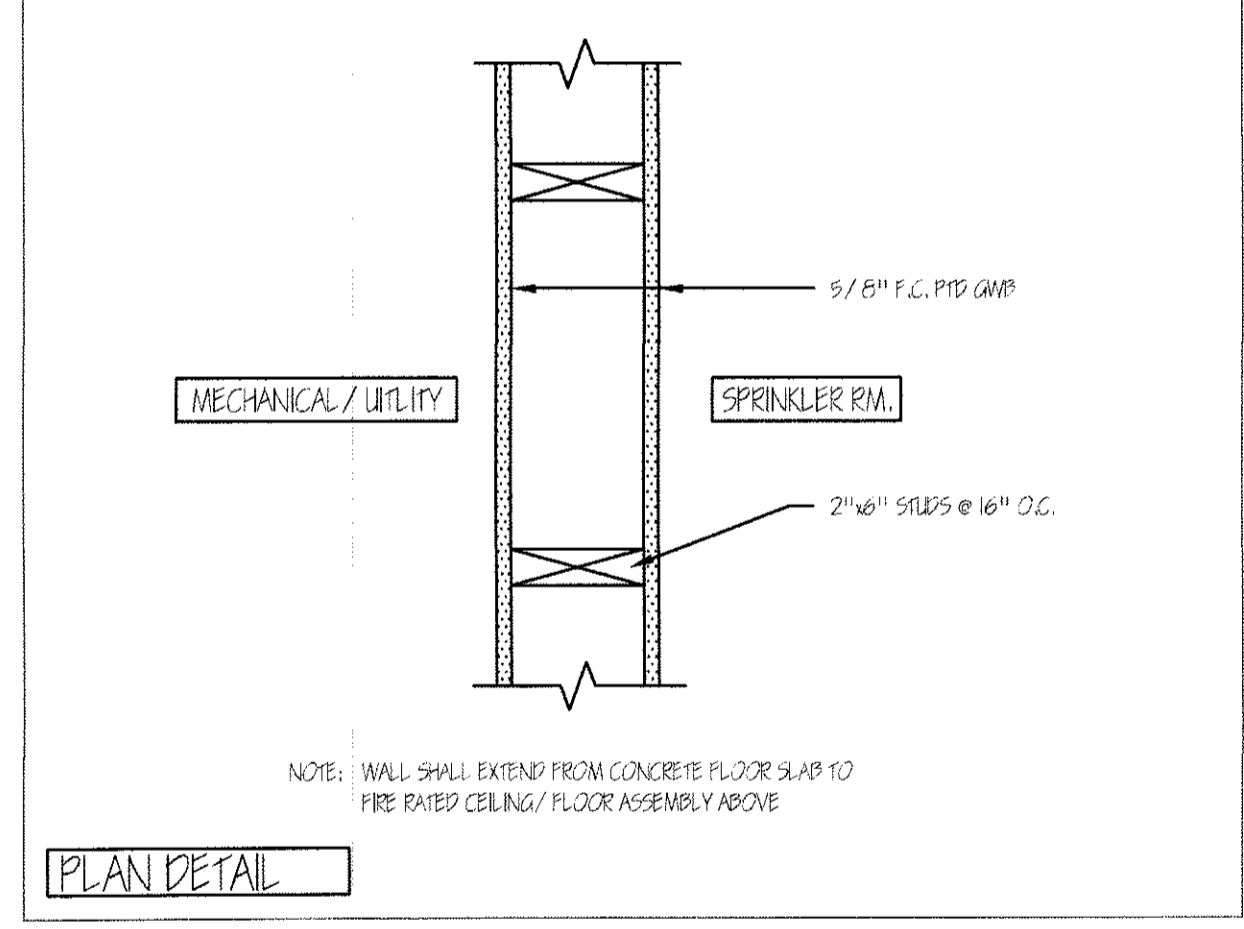
8 1 HR RATED EXTERIOR WALL ASSEMBLY 1 1/2"=1'-0"



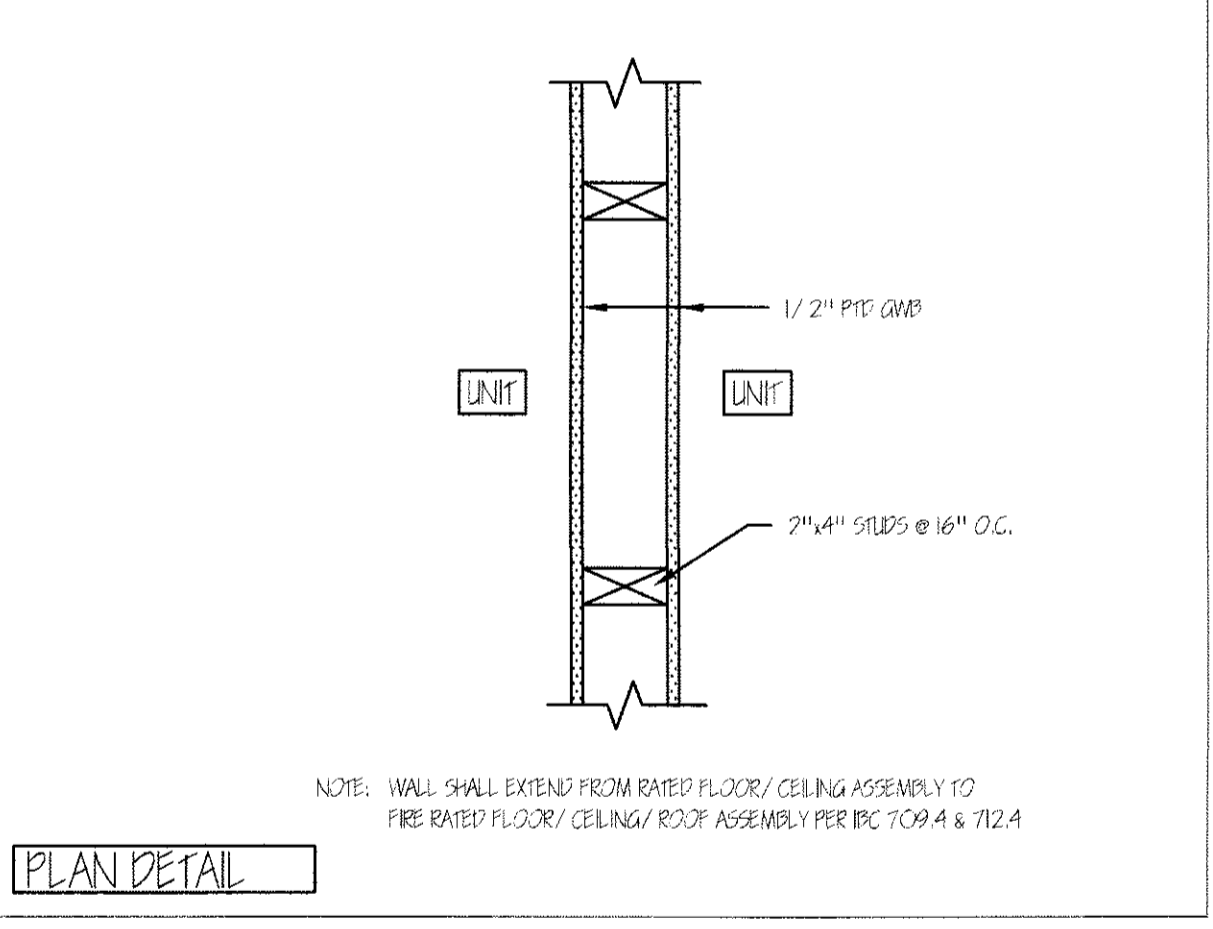
9 1 HR RATED PARTITION AT STAIR 1 1/2"=1'-0"



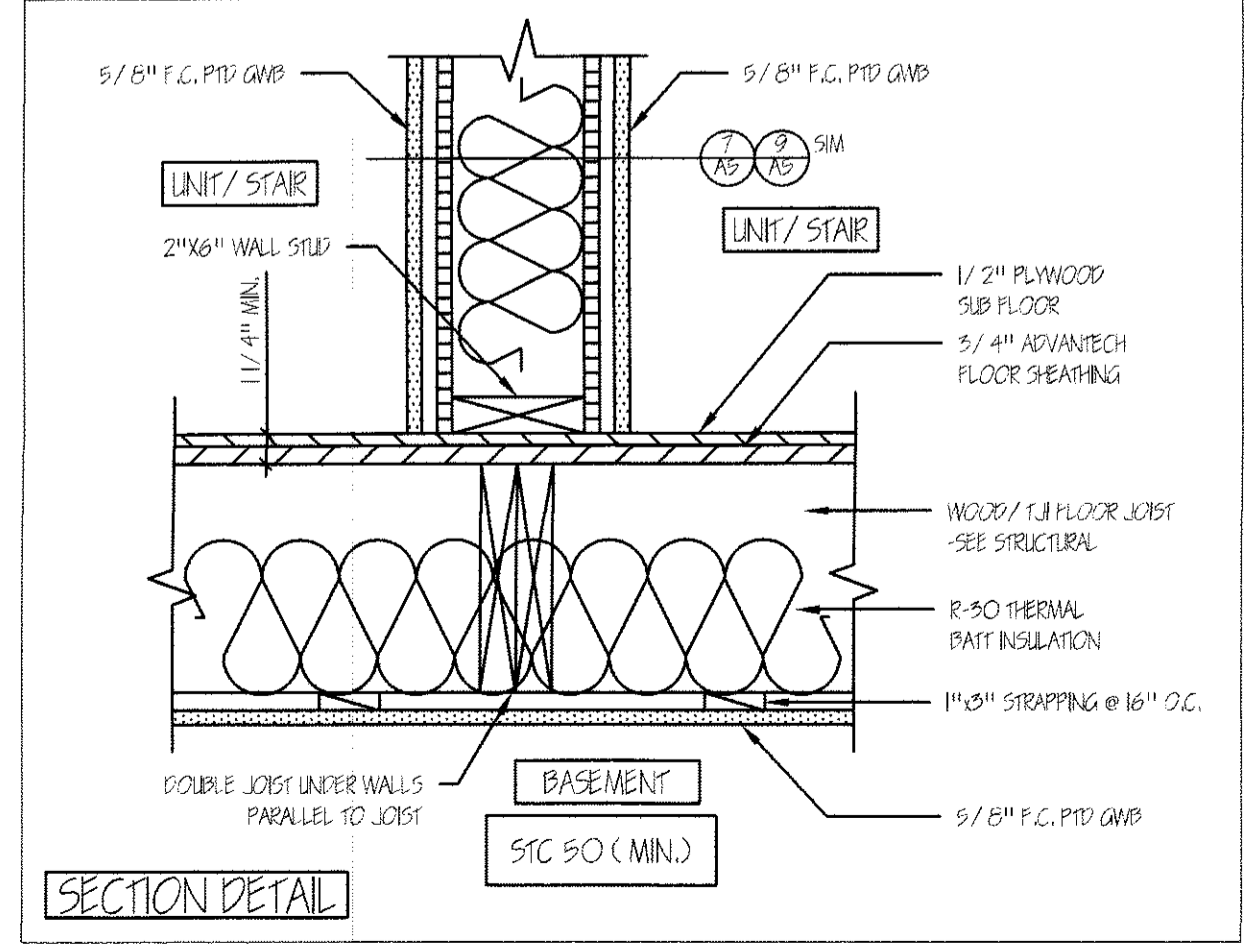
10 1 HR RATED CEILING/ROOF ASSEMBLY 1 1/2"=1'-0"



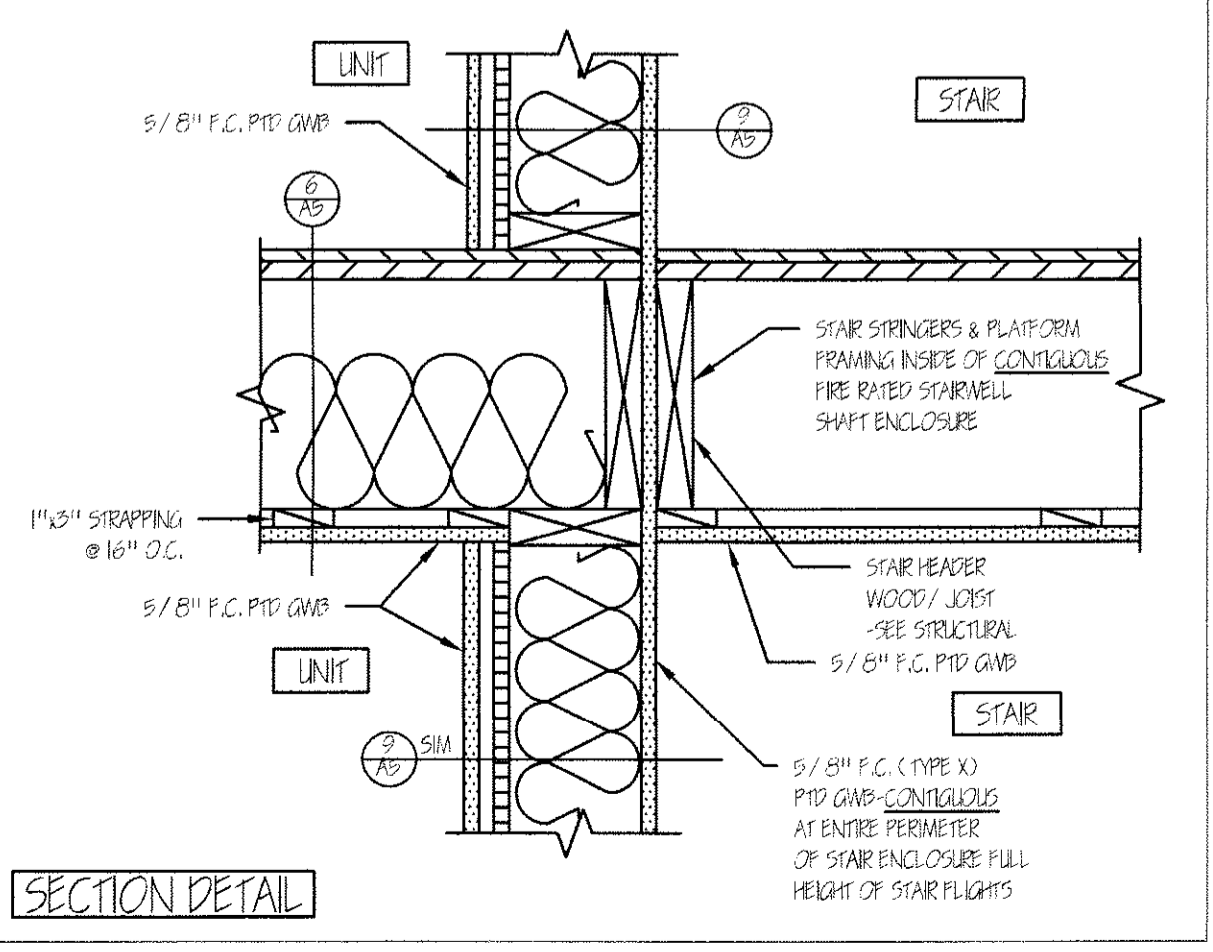
11 1 HR RATED PARTITION WALL 1 1/2"=1'-0"



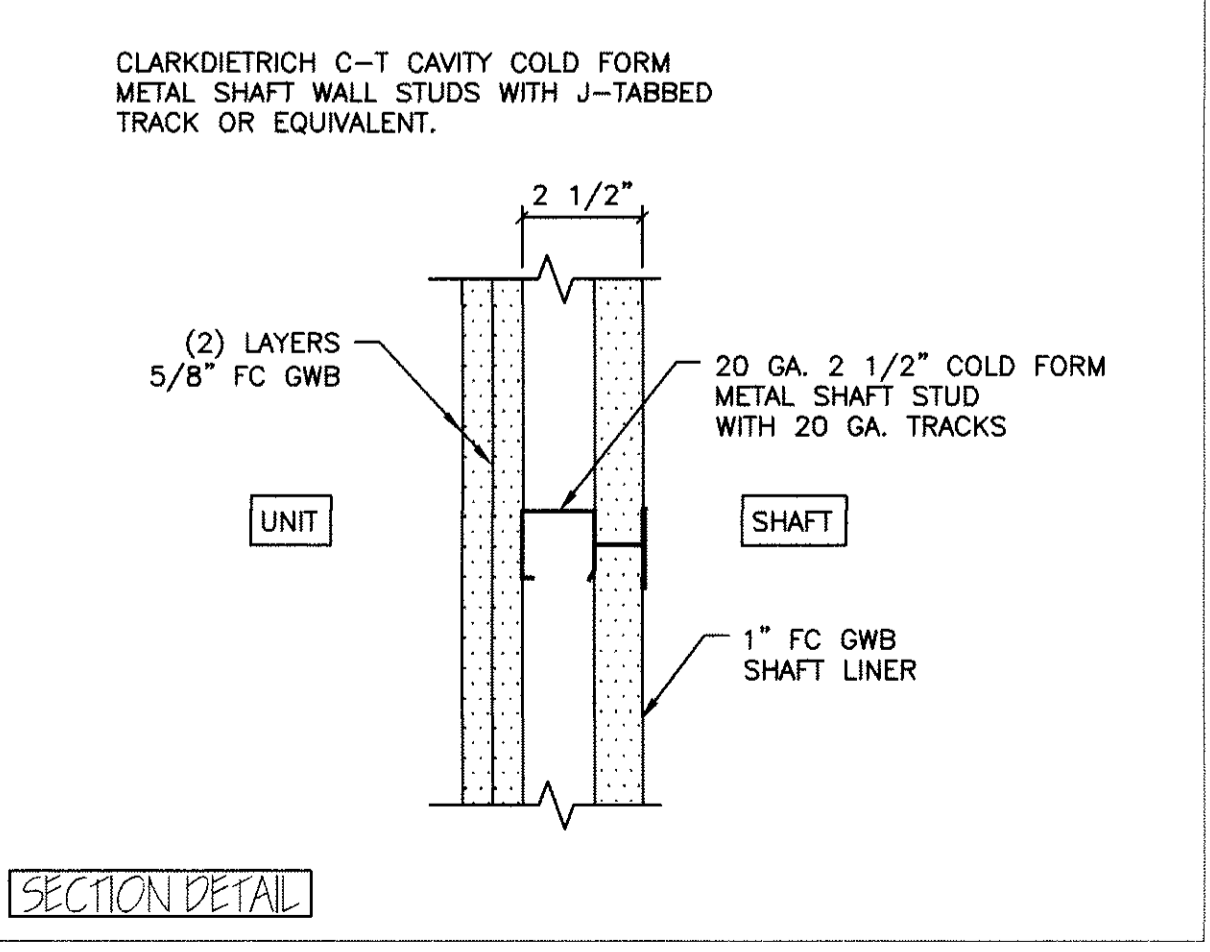
13 NON-RATED INTERIOR PARTITION WALL 1 1/2"=1'-0"



12 1 HR RATED FIRST FLOOR ASSEMBLY 1 1/2"=1'-0"



14 1 HR RATED UNIT/STAIR SEPERATION @ 1 HR FIRE RATED FLOOR/CEILING ASSEMBLY 1 1/2"=1'-0"



15 2 HR RATED SHAFT WALL 1 1/2"=1'-0"

DOOR SCHEDULE						
NO.	SIZE (WHD)	INSUL	FIRE RATING	HARDWARE	SWING	REMARKS
01	5'-0"x6'-5"	NONE	1 HR	HW-5	PER PLAN	
02	5'-0"x6'-5"	NONE	1 HR	HW-5	PER PLAN	
03	5'-0"x6'-5"	R-7	NONE	HW-1	PER PLAN	
04	5'-0"x6'-5"	R-7	NONE	HW-1	PER PLAN	
05	5'-0"x6'-5"	R-7	NONE	HW-1	PER PLAN	
06	5'-0"x6'-5"	R-7	1 HR	HW-2	PER PLAN	* DOOR/FRAME ASSEMBLY, SELF CLOSING
07	5'-0"x6'-5"	NONE	NONE	HW-5	PER PLAN	* DOOR/FRAME ASSEMBLY, SELF CLOSING
08	5'-0"x6'-5"	NONE	NONE	HW-4	PER PLAN	* DOOR/FRAME ASSEMBLY, SELF CLOSING
09	5'-0"x6'-5"	R-7	1 HR	HW-2	PER PLAN	* DOOR/FRAME ASSEMBLY, SELF CLOSING
10	5'-0"x6'-5"	R-7	1 HR	HW-2	PER PLAN	* DOOR/FRAME ASSEMBLY, SELF CLOSING
11	5'-0"x6'-5"	R-7	1 HR	HW-2	PER PLAN	* DOOR/FRAME ASSEMBLY, SELF CLOSING

NOTE: SEE FLOOR PLANS FOR UNIT INTERIOR DOOR SIZES, SWING AND TYPE

NO.	REMARKS
HW-1	* GC OPTIONAL SELF CLOSING PUTTS OR DOOR CLOSERS
HW-2	* GC OPTIONAL SELF CLOSING PUTTS OR DOOR CLOSERS
INTERNAL UNIT DOORS	3 BUTTS: LATCH SET EXCEPT PRIVACY SET AT BATHROOMS
HW-5	3 BUTTS: LEVER PRIVACY LOCK SET
HW-4	3 BUTTS: LEVER OFFICE LOCK SET
HW-5	3 BUTTS: * DOOR PASSAGE LEVER LATCH SET

WINDOW SCHEDULE						
NO.	SIZE (WHD)	TYPE	FIRE RATING	GLAZING	ROUGH OPENING (WHD)	REMARKS
A	6'-0"x5'-0"	FIXED	NONE	INSL. GL.	6'-0 1/2"x5'-0 1/2"	ANDERSEN OR EQUIV.
B	5'-6"x5'-0"	FIXED	NONE	INSL. GL.	5'-6 1/2"x5'-0 1/2"	ANDERSEN OR EQUIV.
C	5'-2 1/4"x6"	FIXED	NONE	INSL. GL.	5'-2 1/2"x6 1/2"	ANDERSEN OR EQUIV.
D	1150C46	DOUBLE-HUNG	NONE	INSL. GL.	5'-2 1/2"x4'-2 1/4"	ANDERSEN OR EQUIV. (EGRESS WINDOW)
E	1150C46	DOUBLE-HUNG	NONE	INSP, INSL. GL.	5'-2 1/2"x4'-2 1/4"	ANDERSEN OR EQUIV. (EGRESS WINDOW)

WINDOW & DOOR SCHEDULE & HARDWARE SETS