

**STANDARD MATERIAL LIST (UNLESS OTHERWISE NOTED)**

**FLOOR (WOOD FRAMED)**  
 JOISTS: SEE FRAMING PLAN  
 SHEATHING: 3/4" T&G ADVANTECH (FASTEN USING CONSTRUCTION ADHESIVE & 8d RING SHANK NAILS)  
 UNDERLAYMENT: AS REQ'D, SUITABLE WITH FINISH FLOOR MANUF.  
 INSULATION: SEE INSULATION

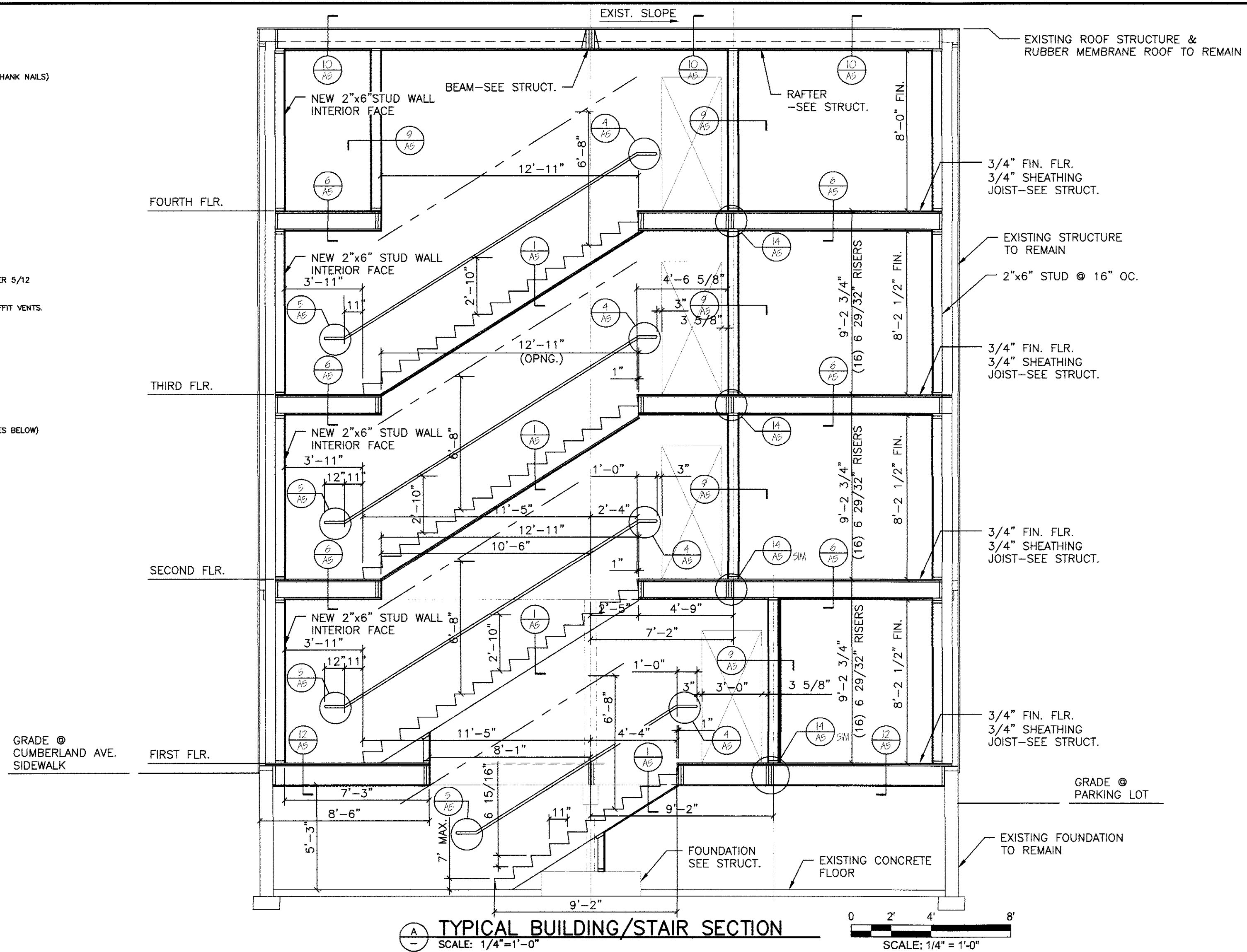
**WALLS-**  
 STUDS (EXTERIOR): 2"x6" @ 16" OC.  
 STUDS (INTERIOR): 2"x4" @ 16" OC.  
 EXTERIOR SHEATHING: 1/2" OSB PLYWOOD, 1/2" OSB, 7/16" ADVANTECH ZIP SYSTEM  
 AIR BARRIER: TYVEK OR EQUIVALENT, NOT REQ'D W/ZIP SYSTEM  
 INSULATION: SEE INSULATION  
 SIDING: VINYL CLAPBOARD TO MATCH EXISTING  
 VAPOR BARRIER: 6 MIL. POLY.  
 INTERIOR FINISH: 1/2" GYPSUM BOARD

**CEILING-**  
 JOISTS: SEE FRAMING PLAN  
 STRAPPING: 1"x3" @ 16" OC.  
 INTERIOR FINISH: 1/2" GYPSUM BOARD  
 VAPOR BARRIER: 6 MIL. POLY. (EXTERIOR EXPOSURE ONLY)  
 INSULATION: SEE INSULATION

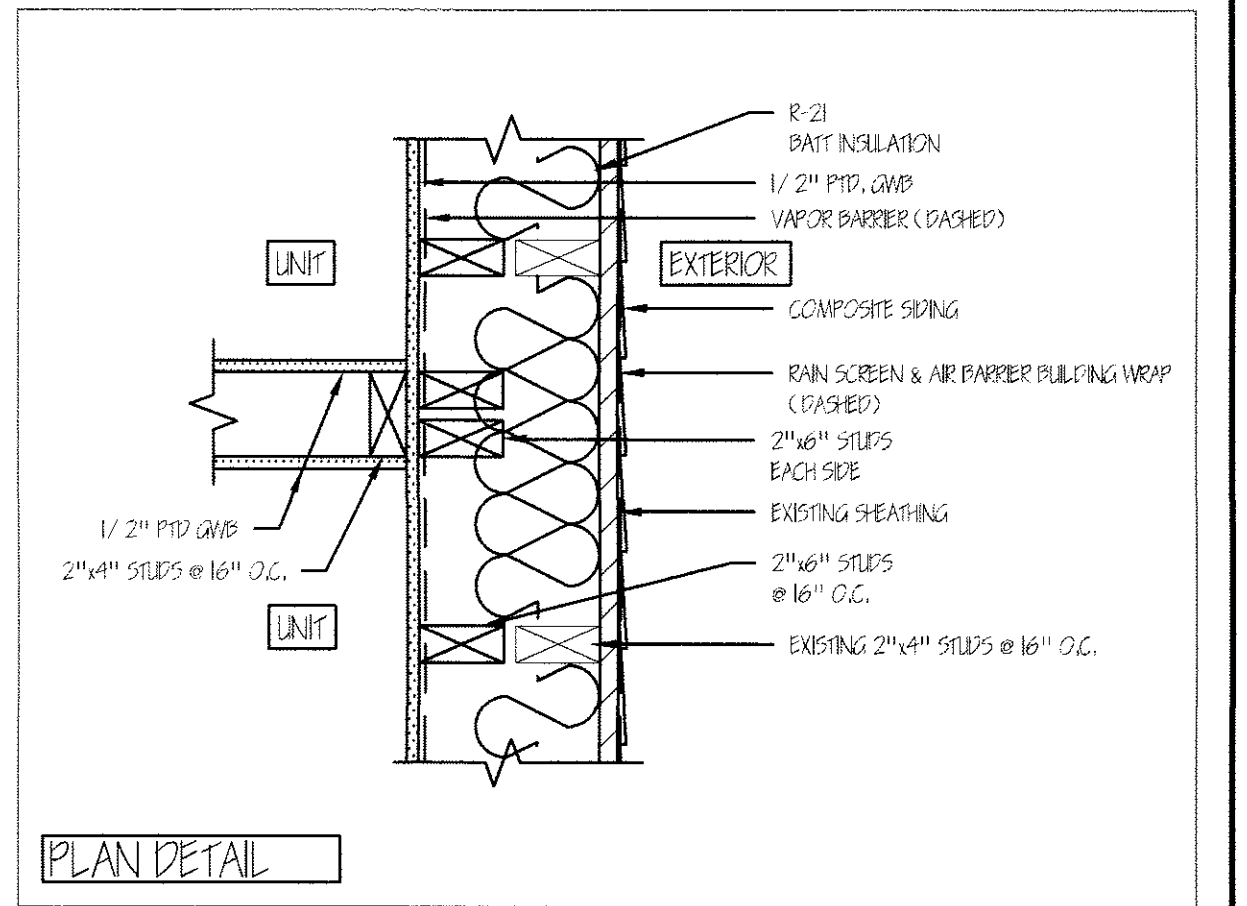
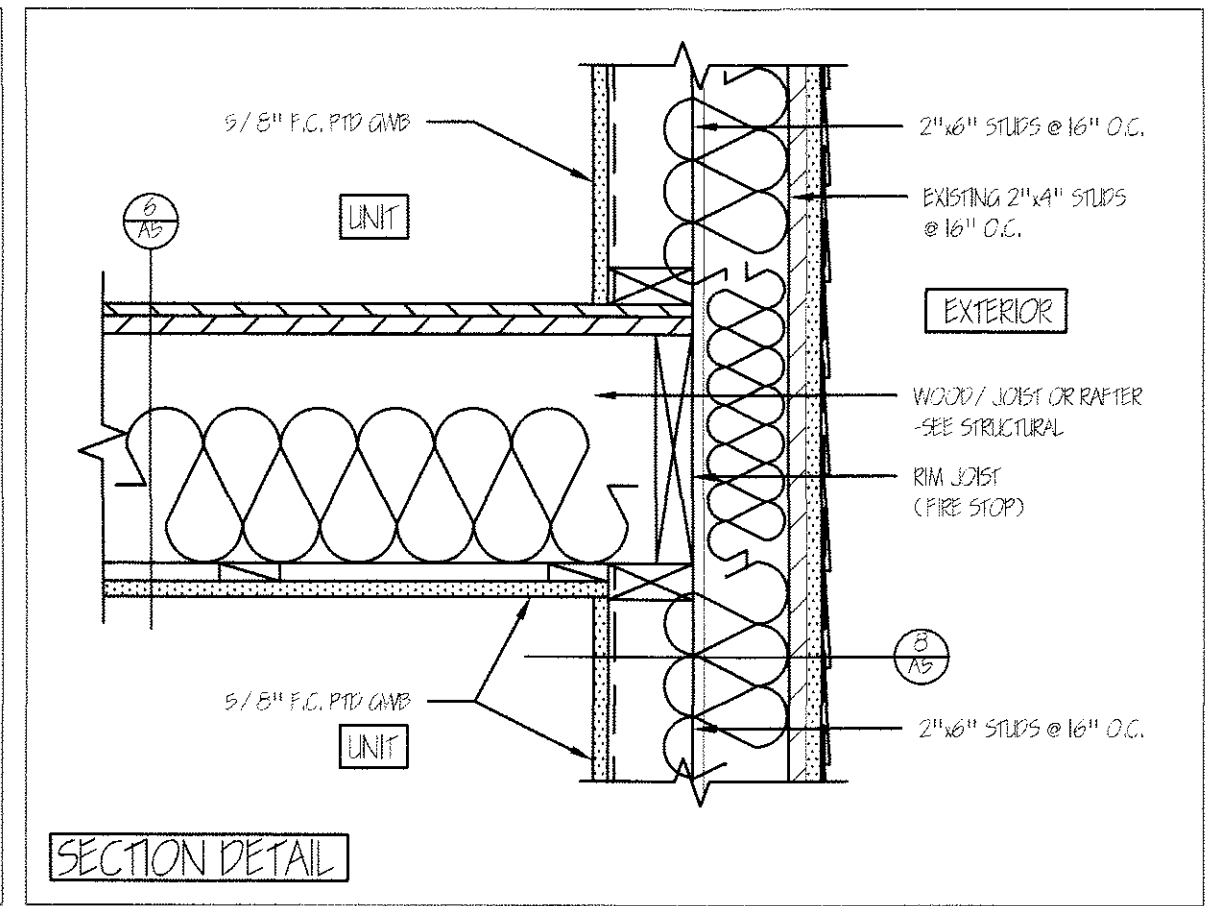
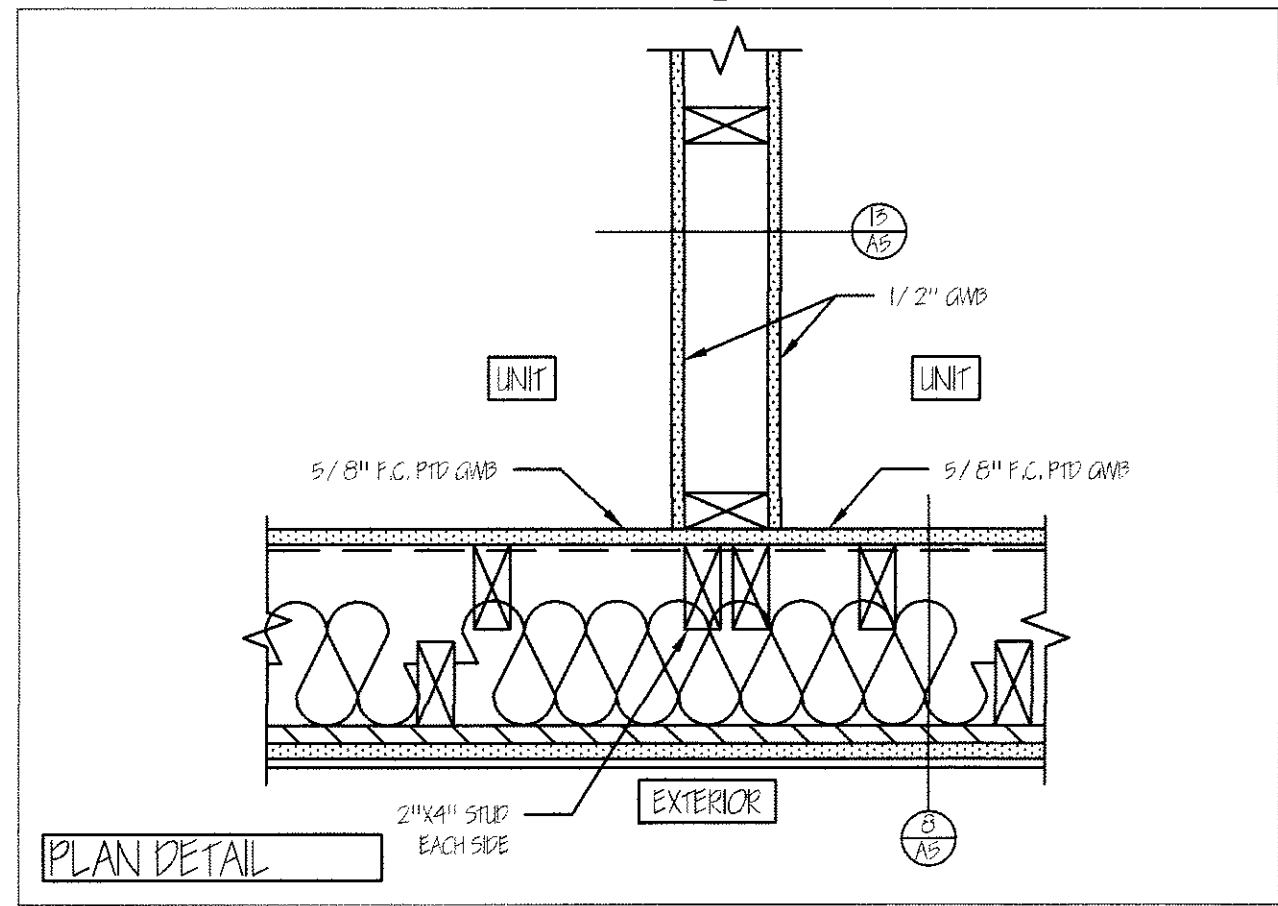
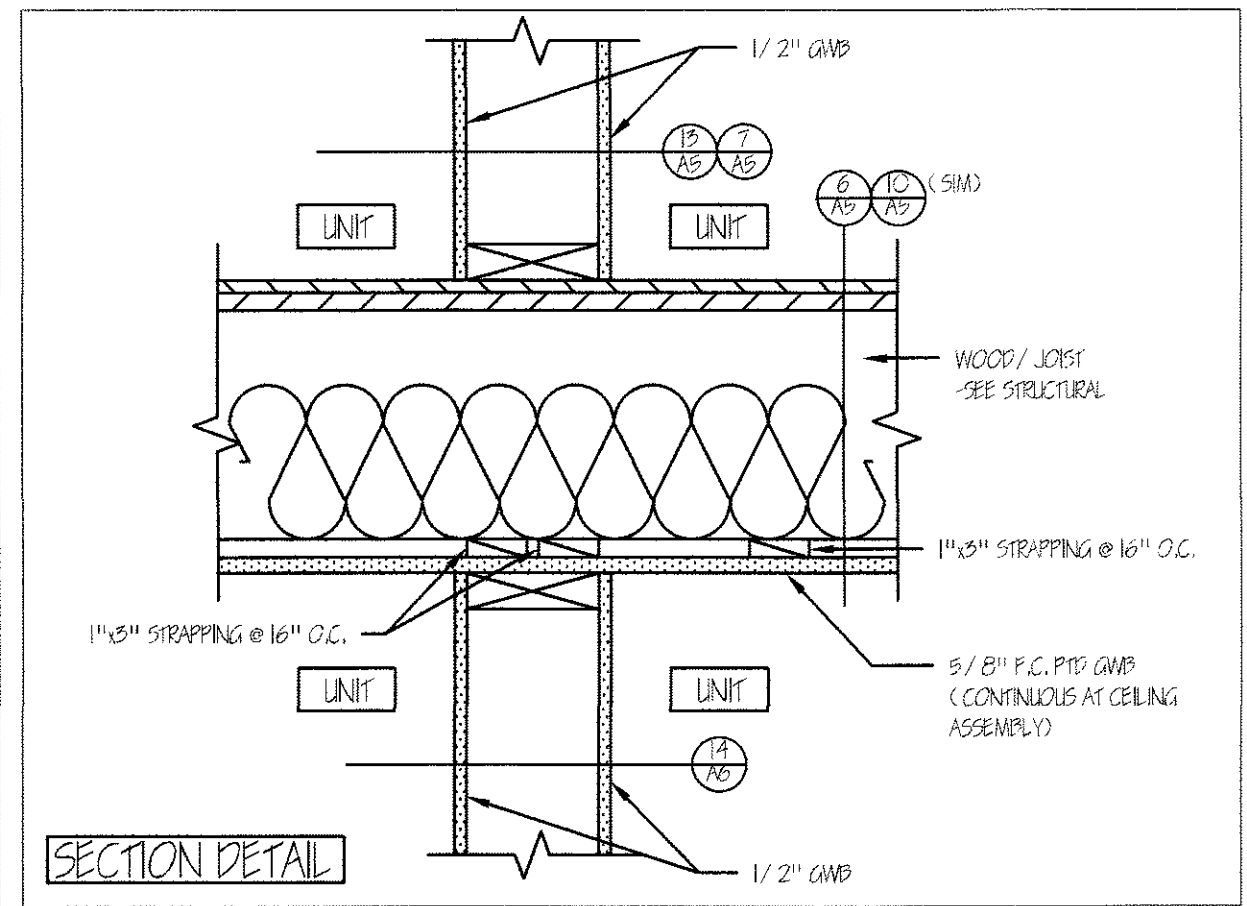
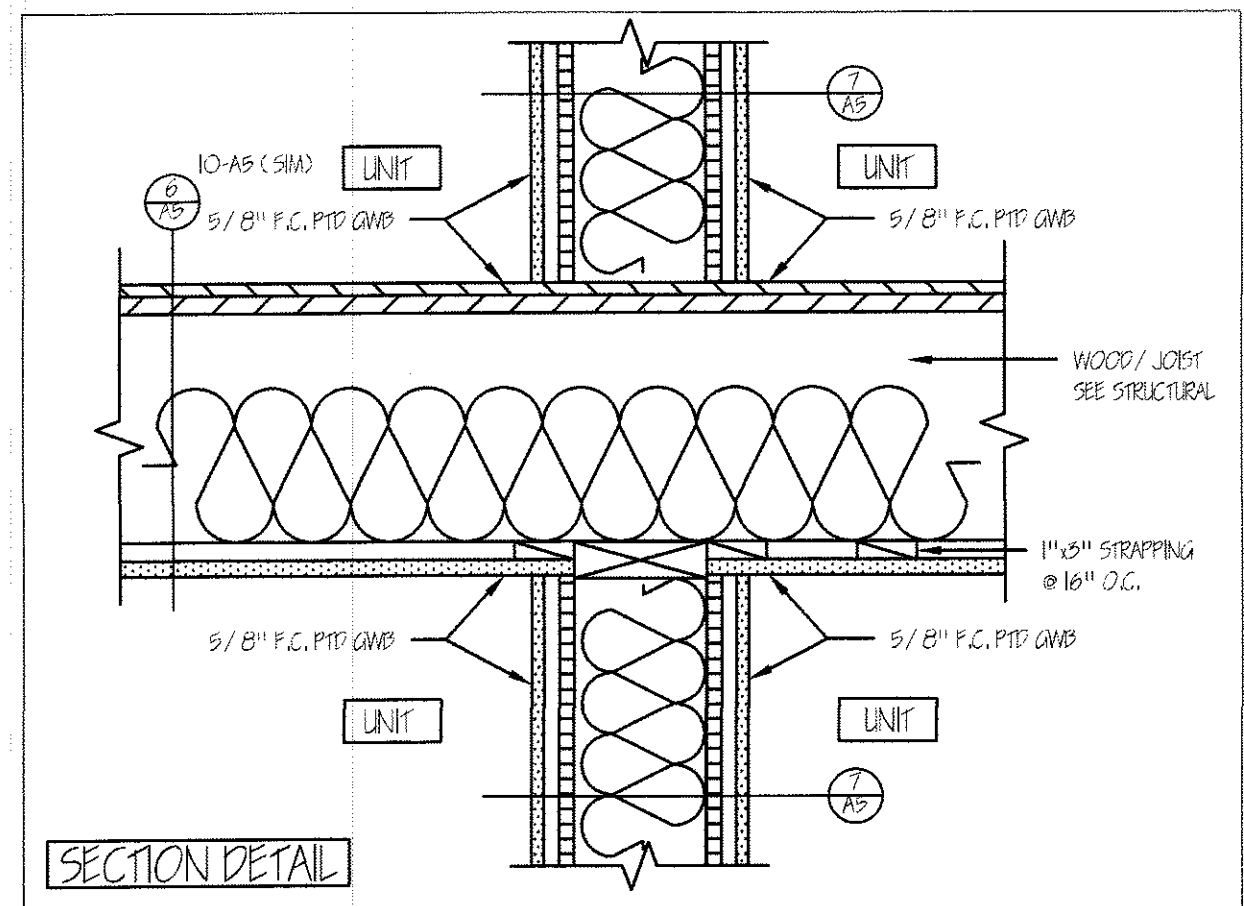
**ROOFS-**  
 RAFTERS: SEE FRAMING PLAN  
 MEMBRANE ROOF: EXISTING TO REMAIN  
 SHEATHING: 5/8" ADVANTECH ZIP SYSTEM AS REQUIRED  
 ICE & WATER SHIELD: ALL VALLEYS, 36" @ ROOF EDGE, ENTIRE SURFACE W/PITCHES UNDER 5/12  
 STEEPED METAL FLASHING @ ALL CHIMNEYS  
 INSULATION: SEE INSULATION  
 ALL ROOFS SHALL HAVE PROPER VENTILATION WITH PROPER VENTS, RIDGE VENTS AND SOFFIT VENTS.

**SOFFIT/RAKE TRIM-**  
 FASCS: MATCH EXISTING  
 VENT: CONT. SOFFIT VENT

**INSULATION:**  
 COMPLY WITH INTERNATIONAL BUILDING CODE 2009, ENERGY CONSERVATION, CHAPTER 11  
 LOCATION: CUMBERLAND COUNTY, ME.  
 HDD: 7,000-8,499  
 MINIMUM INSULATION R-VALUES:  
 CEILING: R-49  
 WALLS: R-21  
 FLOORS: R-21, R-30 @ GARAGE AND EXPOSURE TO EXTERIOR  
 BASEMENT WALLS: R11 (COMPLY WITH CHAPTER REQUIREMENTS FOR USING VALUES BELOW)  
 SLAB PERIMETER R-VALUE & DEPTH: R-13, 4 FT.  
 CRAWL SPACES: R-30  
 ALL ROOFS SHALL HAVE CONT. RIDGE VENTS  
 PROPER VENTS SHALL BE INSTALL @ RAFTERS FOR PROPER AIR CIRCULATION



**TYPICAL BUILDING/STAIR SECTION**  
 SCALE: 1/4" = 1'-0"



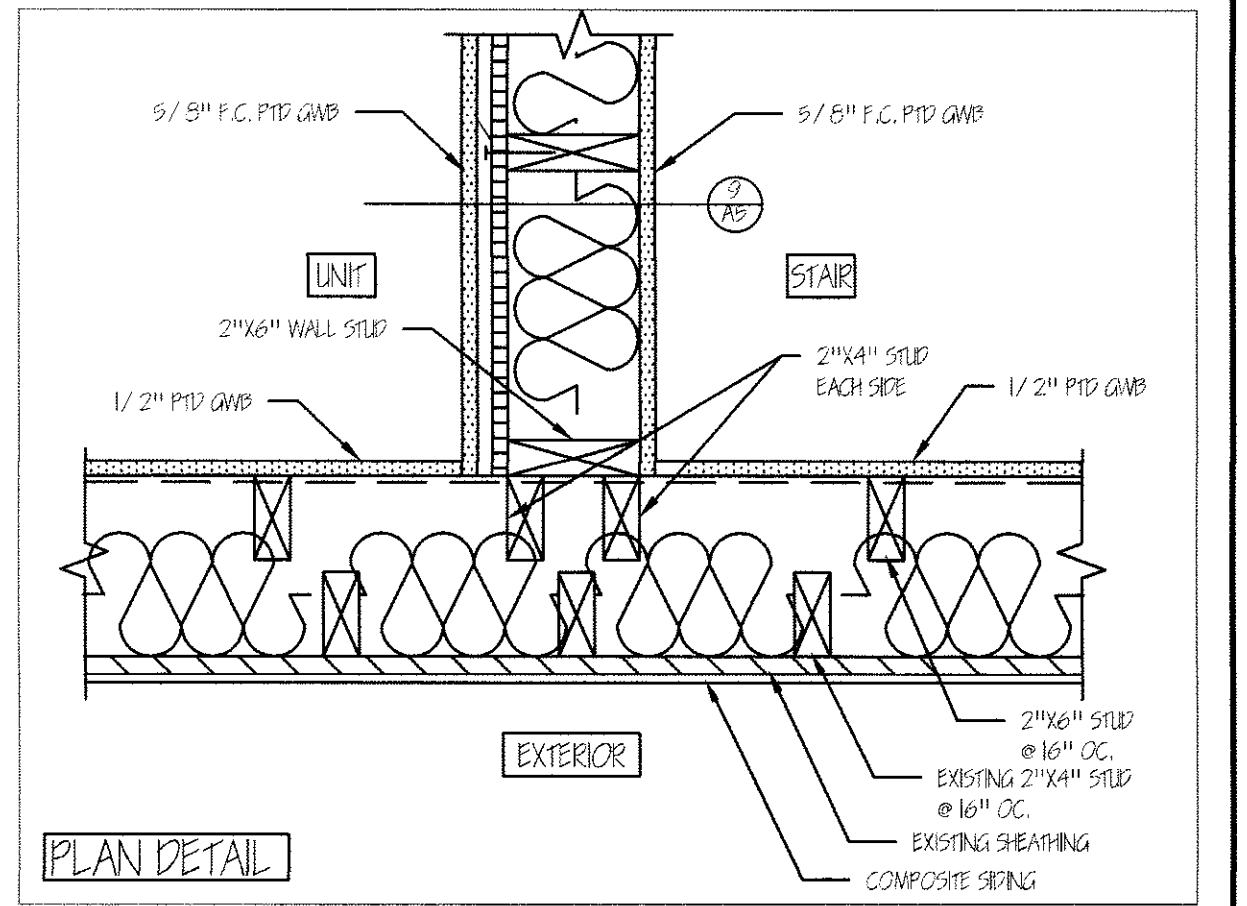
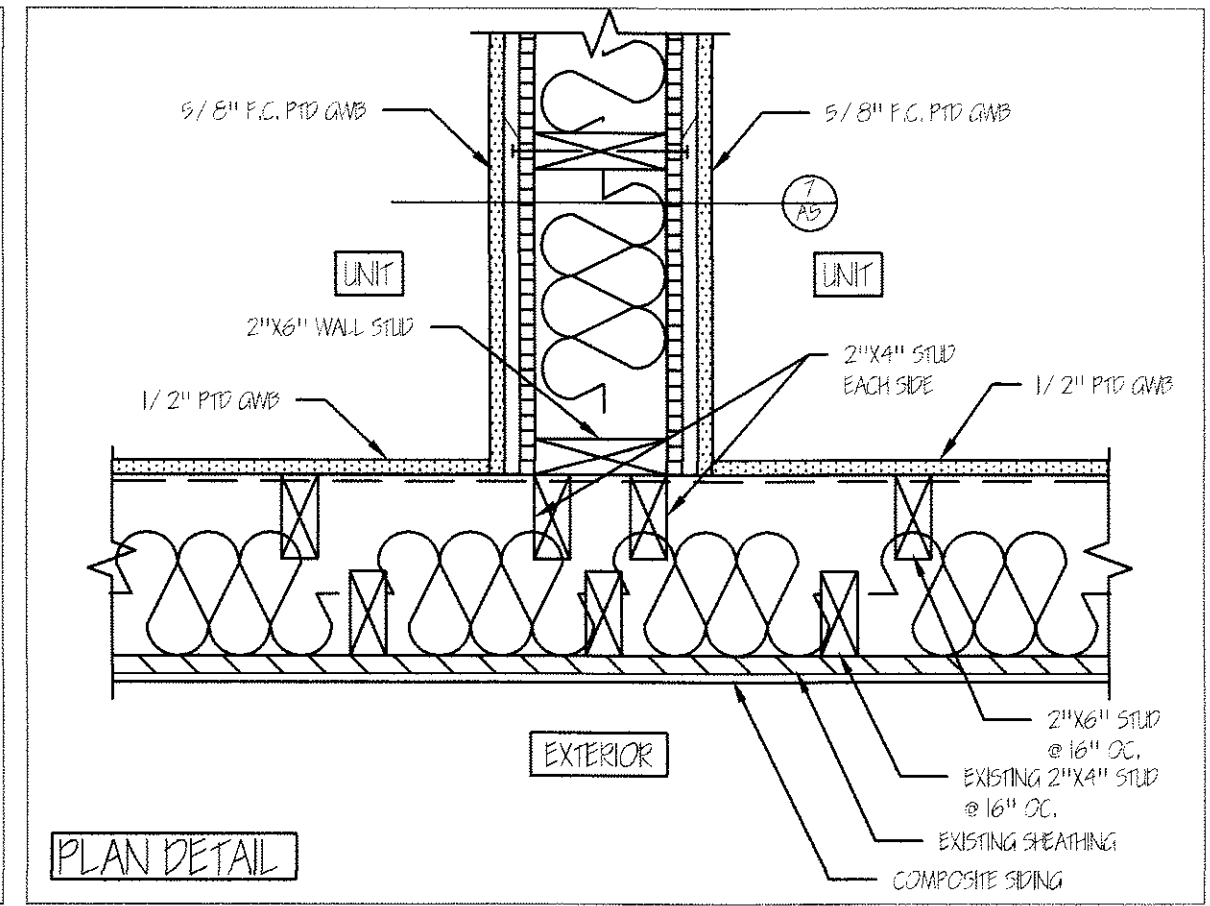
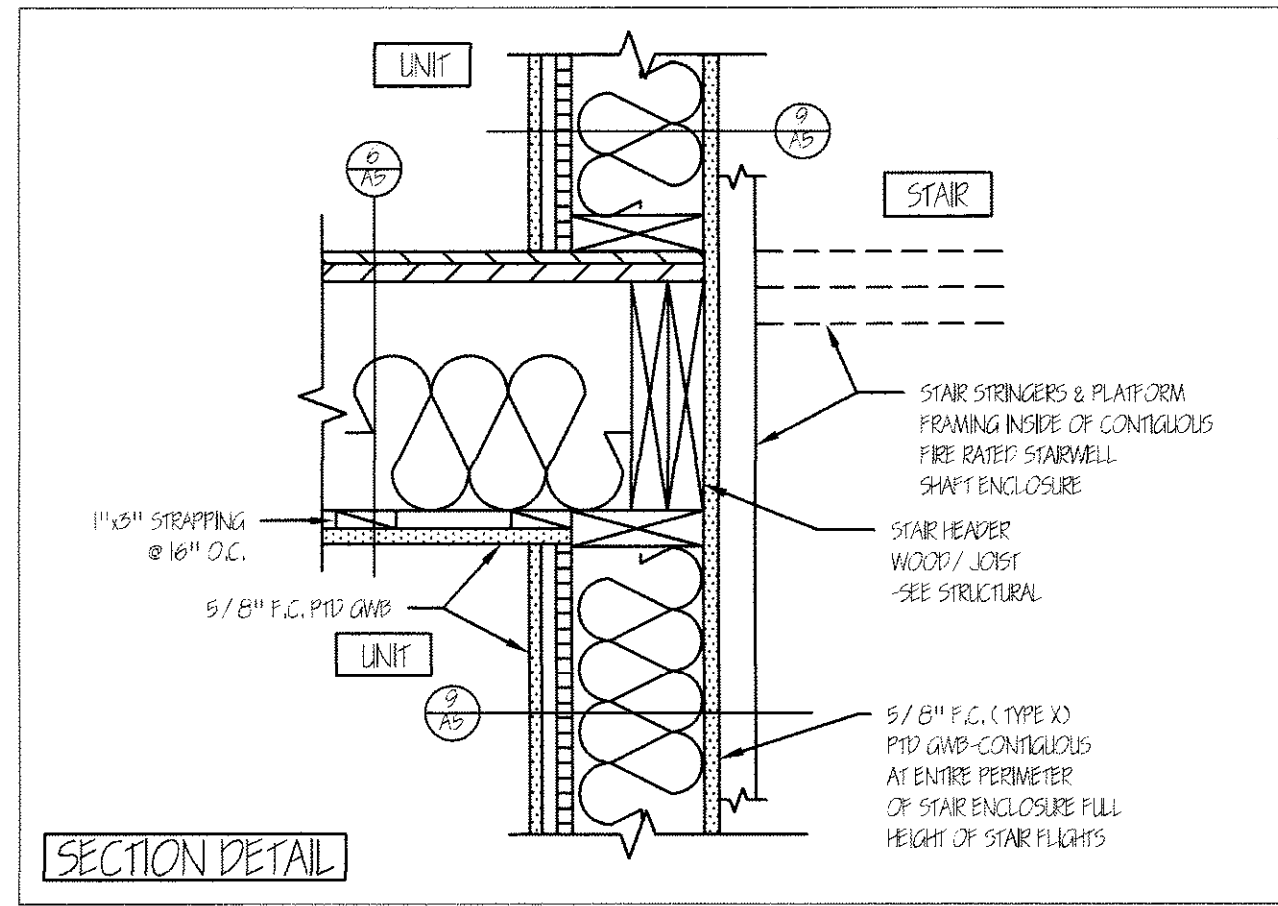
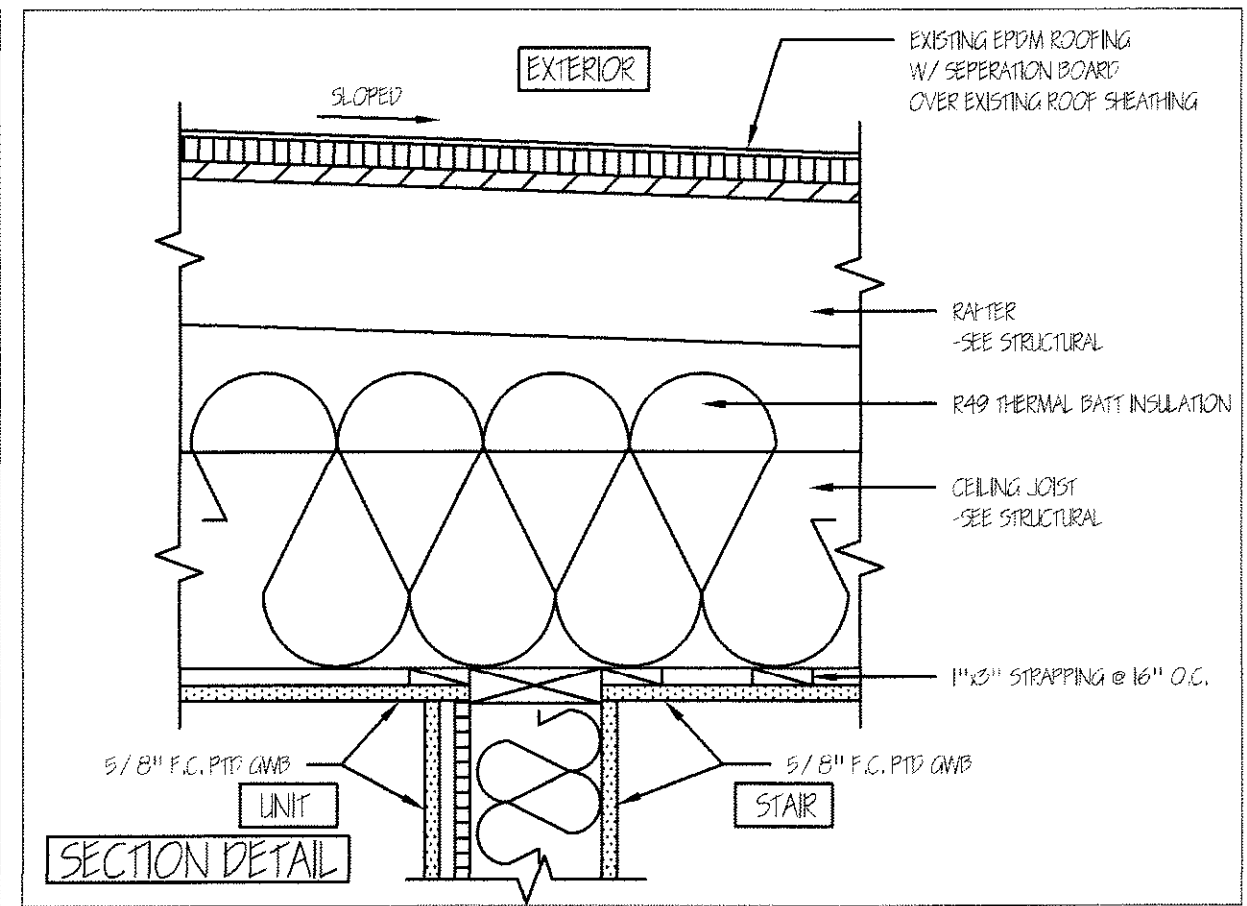
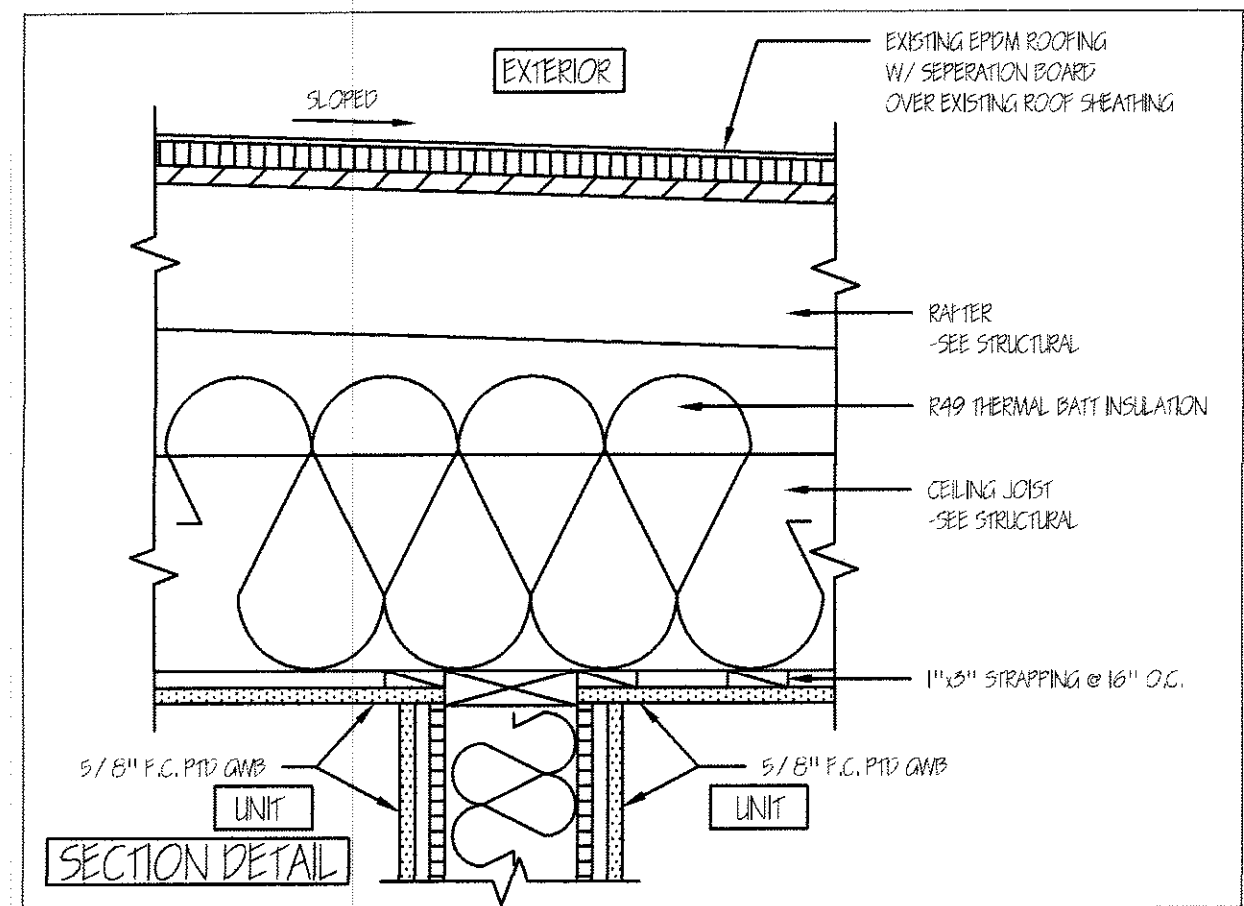
**1** 1 HR RATED UNIT SEPARATION @ 1 HR FIRE RATED FLOOR/CEILING ASSEMBLY 11/2" = 1'-0"

**2** NON-RATED PARTITION @ 1 HR FIRE RATED FLOOR/CEILING ASSEMBLY 11/2" = 1'-0"

**3** NON-RATED PARTITION @ EXTERIOR 1 HR FIRE RATED WALL ASSEMBLY 11/2" = 1'-0"

**4** 1 HR RATED FLOOR ASSEMBLY @ 1 HR FIRE RATED EXTERIOR WALL ASSEMBLY 11/2" = 1'-0"

**5** NON-RATED PARTITION @ NON-RATED EXTERIOR WALL ASSEMBLY 11/2" = 1'-0"



**6** 1 HR RATED UNIT SEPARATION @ ROOF ASSEMBLY 11/2" = 1'-0"

**7** 1 HR RATED STAIR/UNIT SEPARATION @ ROOF ASSEMBLY 11/2" = 1'-0"

**8** 1 HR RATED UNIT SEPARATION PARTITION @ FLOOR/CEILING ASSEMBLY @ STAIR 11/2" = 1'-0"

**9** 1 HR RATED PARTITION @ EXTERIOR WALL ASSEMBLY 11/2" = 1'-0"

**10** 1 HR RATED STAIR PARTITION @ EXTERIOR WALL ASSEMBLY 11/2" = 1'-0"