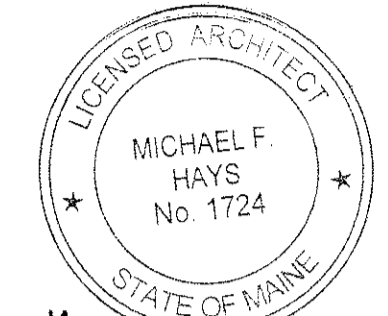


GRANT HAYS  
ASSOCIATES

ARCHITECTURE & INTERIOR DESIGN  
P.O. BOX 6179 FALMOUTH MAINE 04105  
207.871.5900 www.granthays.com

SCALE



Michael F. Hays  
REVISION

PROJECT NAME

6 UNIT APARTMENT/COMMERCIAL  
223 CUMBERLAND AVENUE  
223 CUMBERLAND AVENUE LLC.  
477 CONGRESS STREET  
PORTLAND, MAINE 04101

SCALE

THIRD & FOURTH  
FLOOR PLAN

DATE  
29/SEPT 2015

SCALE  
1/4"=1'-0"

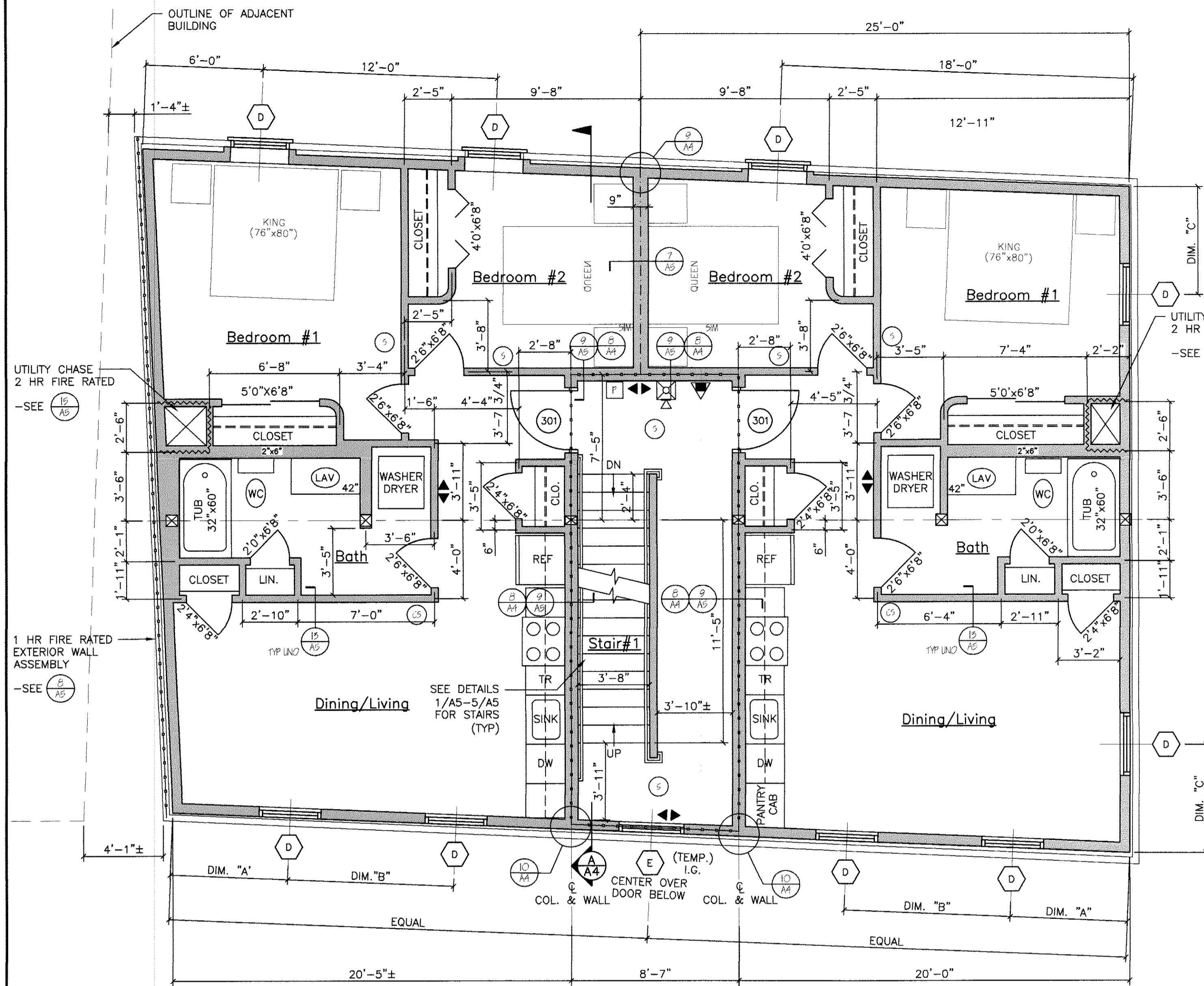
DRAWN  
JAM/MFH

JOB NO.  
150904

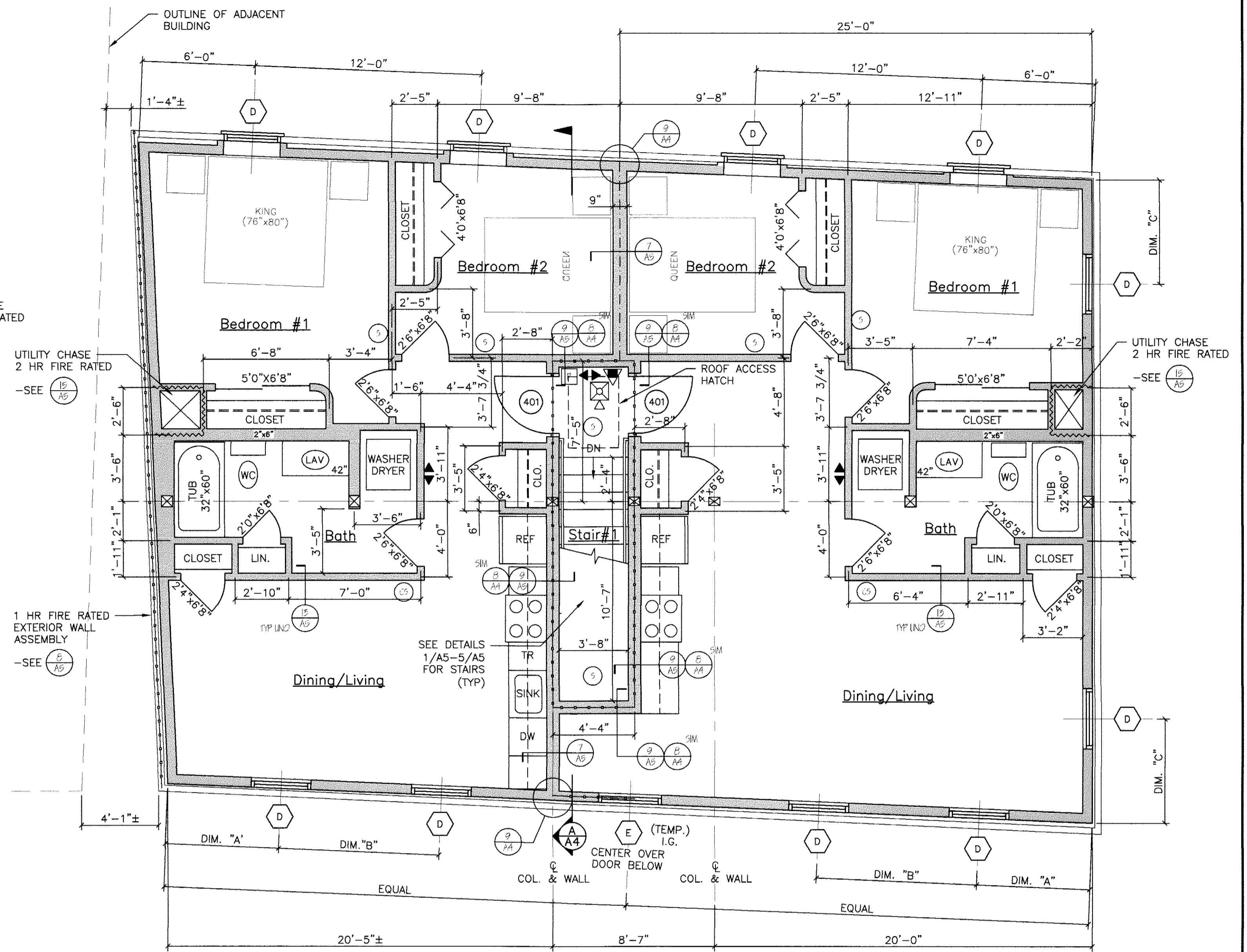
SCALE

A3

COPYRIGHT  
REPRODUCTION OR BELIEF OF THIS  
DOCUMENT WITHOUT WRITTEN  
PERMISSION FROM GRANT HAYS/  
ASSOCIATES IS PROHIBITED.



THIRD FLOOR PLAN  
SCALE: 1/4"=1'-0"



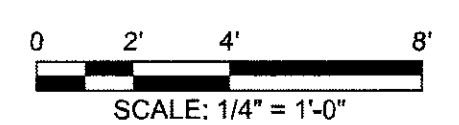
FOURTH FLOOR PLAN  
SCALE: 1/4"=1'-0"

NFPA LEGEND	
	EXIT LIGHT
	FIRE EXTINGUISHER
	FIRE ALARM PULL MANUAL PULL STATION
	FIRE ALARM PANEL
	EMERGENCY LIGHT
	FIRE ALARM HORN/SIREN UNIT
	FIRE ALARM STROBE UNIT
	SMOKE DETECTOR W/ SOUNDER BASE & STROBE (INTERCONNECTED)
	COMBINATION CARBON MONOXIDE / SMOKE DETECTOR W/ SOUNDER BASE & STROBE (INTERCONNECTED)
	HEAT DETECTOR
	ANNUNCIATOR PANEL
	KNOCK BOX
	2 HR FIRE RATED PARTITION
	1 HR FIRE RATED PARTITION
	1 HR FIRE RATED SEPARATION PARTITION
	"NOT AN EXIT" SIGN

LIFE SAFETY NOTES	
1.	THE BUILDING SHALL HAVE AN NFPA 13 FIRE SUPPRESSION SPRINKLER SYSTEM INSTALLED. SPRINKLER SYSTEM SHALL BE INSTALLED BY A CERTIFIED SPRINKLER CONTRACTOR AND SHALL BE REVIEWED AND APPROVED BY THE STATE OF MAINE FIRE MARSHAL AS WELL AS THE LOCAL AUTHORITY HAVING JURISDICTION. THE CONTRACTOR SHALL BEAR SOLE RESPONSIBILITY FOR THE DESIGN AND INSTALLATION OF THE SYSTEM FOR OCCUPANCY.
2.	THE BUILDING SHALL HAVE A FIRE ALARM SYSTEM AS REQUIRED FOR COMPLIANCE WITH NFPA 101 LIFE SAFETY CODE. COORDINATE WITH SPRINKLER SYSTEM. VERIFY LOCATION OF ALARM AND NOTIFICATION PANELS WITH THE AUTHORITY HAVING JURISDICTION.
3.	SEE ACCESSIBILITY DETAILS FOR MOUNTING HEIGHTS OF LIFE SAFETY DEVICES.
4.	ALL ALARMS AND DETECTORS SHALL BE INTERCONNECTED WITHIN EACH LIVING UNIT.
5.	REFER TO THE WINDOW SCHEDULE FOR EGRESS WINDOWS.

GENERAL NOTES	
1.	ALL HORIZONTAL UNIT SEPARATIONS (FLOOR/CEILING/ROOF) ASSEMBLIES SHALL BE 1 HR. FIRE RATED / SIC 50. -SEE (6/AS) & (10/AS) & (1/AA)
2.	ALL VERTICAL UNIT SEPARATIONS (TENANT WALLS) SHALL BE 1 HR. FIRE RATED / SIC 50. -SEE (7/AS)
3.	ALL STAIR ENCLOSURES SHALL BE 1 HR. FIRE RATED. -SEE (1/AA) & (9/AS)
4.	STAIR DETAILS -SEE (1/AS) THRU (5/AS)
5.	REMOVE EXISTING DECKS & FIRE ESCAPES IN THEIR ENTIRETY.
6.	SEE SHEET A6 FOR ACCESSIBILITY DETAILS AND NOTES.
7.	FIRE RATED PARTITIONS AT ROOF ASSEMBLY -SEE (6/AA) & (7/AA)
8.	SEE SHEET A4 FOR FIRE RATED CONTINUITY DETAILS AT FLOOR/WALL ASSEMBLIES.

LEGEND	
SYMBOL	DESCRIPTION
	NEW WALL
	NEW WALL/EXISTING WALL W/INFILL
	EXISTING WALL
	THIN LINEWEIGHT DENOTES EXISTING CONDITIONS
	HEAVY LINEWEIGHT DENOTES NEW CONDITIONS
	DEMOLISHED OR REMOVED STRUCTURE OR EQUIPMENT



SCALE: 1/4"=1'-0"