

CITY OF PORTLAND, ME.  
DEPARTMENT OF PUBLIC WORKS.

Wilmot St. near Wilmot Place

Showing Gates and Pipe in Sidewalk

at #48 Wilmot St. Scale 1 in 10 ft.

Drawn by H.F.M. Traced by H.F.M. Directed by E.L.L.

Approved Nov. 4, 1919

Edward M. Hunt

City Engineer

406  
24

Note:

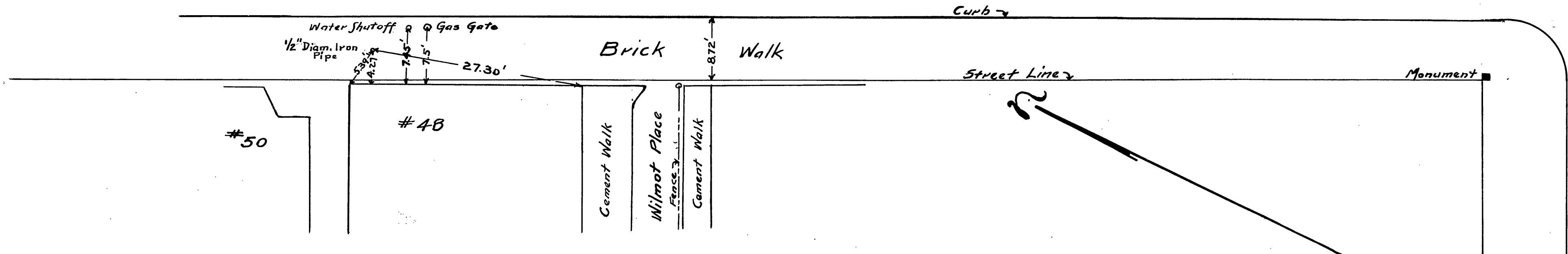
Top of 1/2" iron pipe is flush with surface of brick walk.

Top of gas gate is 1/4" above surface of brick walk at the inner side and 3/4" above the surface at the outer or curb side.

Water shut-off is 1/2" thick and has beveled edges. It rests on surface of walk.

Cumberland

Wilmot Street



Avenue

406  
24