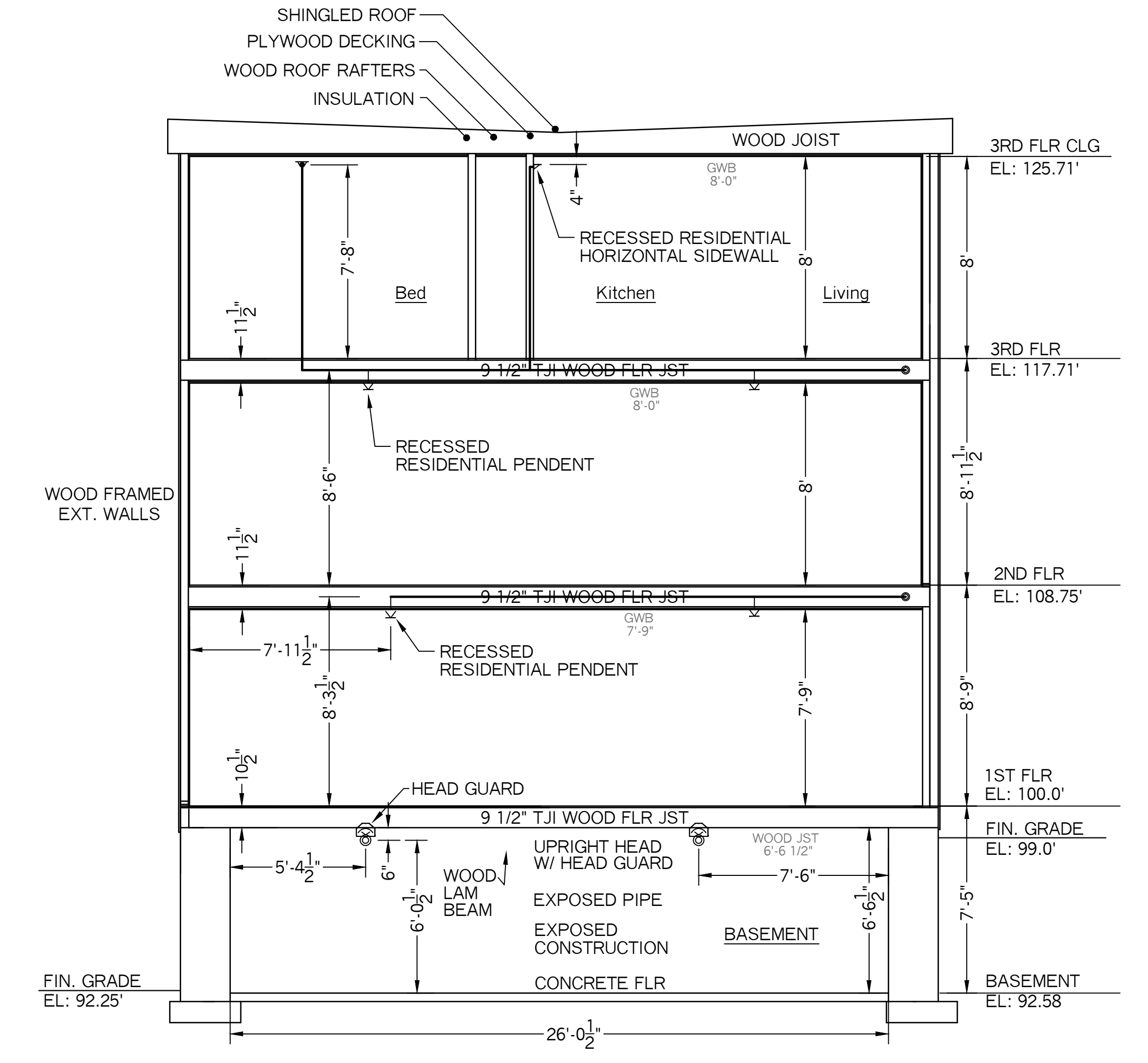


**THIRD FLOOR PLAN**  
 FLOOR AREA = 2,776.0  
 FLR ELEV: 117.71'  
 SCALE: 1/4" = 1'-0"

NOTE\* HORIZONTAL SIDEWALL HEADS PROTECTING DECKS ARE SUPPLIED BY ANTI-FREEZE LOOP LOCATED IN THE BASEMENT.



**BUILDING SECTION A-A**  
 SCALE: 1/4" = 1'-0"

**HYDRAULIC CALCULATION INFORMATION:**

LOCATION: 3RD FLR- AREA #2

BASIS OF DESIGN: NFPA 13R, 2016 EDITION:  
 DENSITY .0508  
 AREA OF COVERAGE 4 MOST REMOTE HEADS

OCCUPANCY: APARTMENT

SPRINKLERS: TOTAL 4 THRD 1/2" ORIFICE 7/16" TEMP 155

SYSTEM DEMAND AT BASE OF RISER (BOR):  
 PRESSURE 87.54 PSI FLOW 59.76 GPM HOSE 0

SAFETY MARGIN: 8.48 PSI

**HYDRAULIC CALCULATION INFORMATION:**

LOCATION: A.F.L. AREA #3

BASIS OF DESIGN: NFPA 13R, 2016 EDITION:  
 DENSITY .1  
 AREA OF COVERAGE 1 HEAD

OCCUPANCY: DECK

SPRINKLERS: TOTAL 1 THRD 1/2" ORIFICE 1/2" TEMP 155

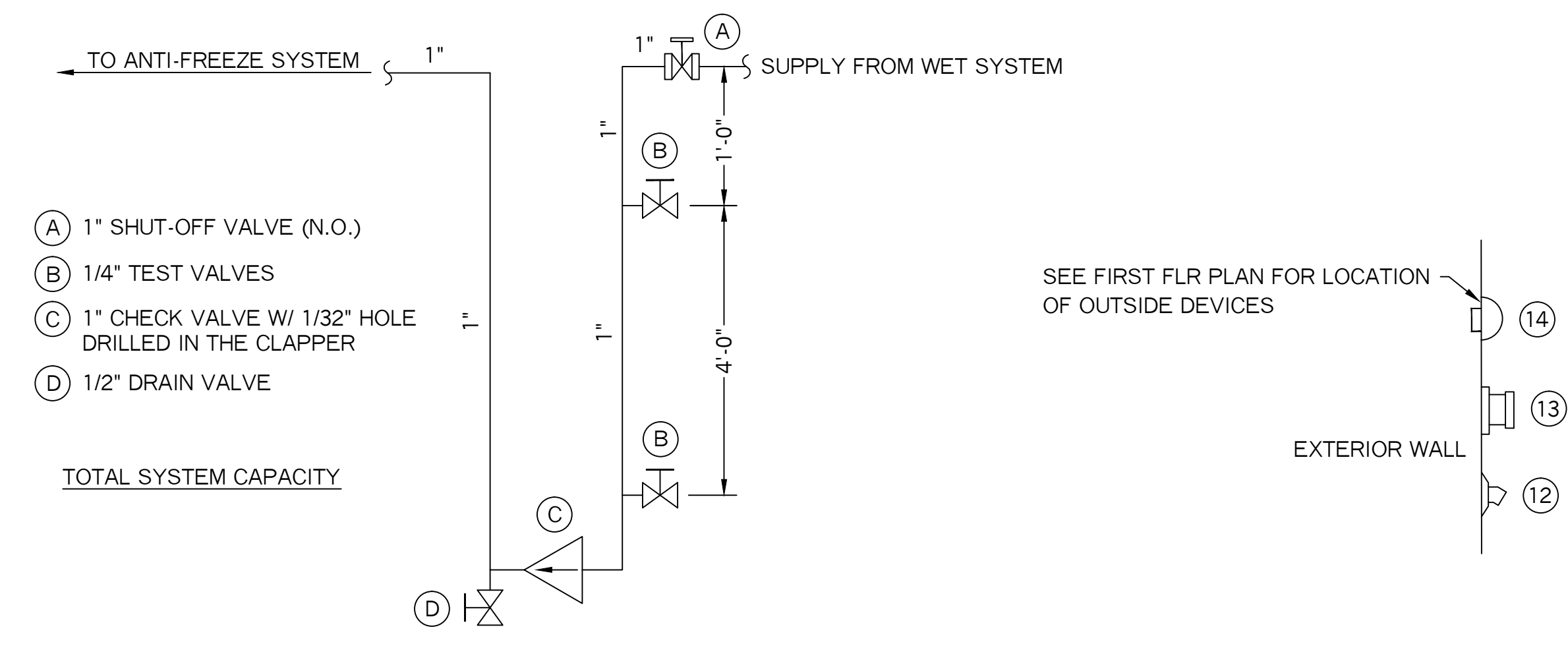
SYSTEM DEMAND AT BASE OF RISER (BOR):  
 PRESSURE 29.54 PSI FLOW 14.9 GPM HOSE 100

SAFETY MARGIN: 66.44 PSI

**SPRINKLER HEAD INFORMATION, FOR THIS FLOOR ONLY**

QTY	SIZE	ORIFICE	K-FACTOR	DESCRIPTION	MODEL	TEMP	ESCUTCHEON	SYMBOL
21	1/2"	7/16"	4.0	VIKING RES. WHITE HOR. SIDEWALL	VK486	155	RECESSED	◀
3	1/2"	1/2"	5.6	VIKING WHITE "QR" HOR. SIDEWALL	VK305	155	RECESSED	◀

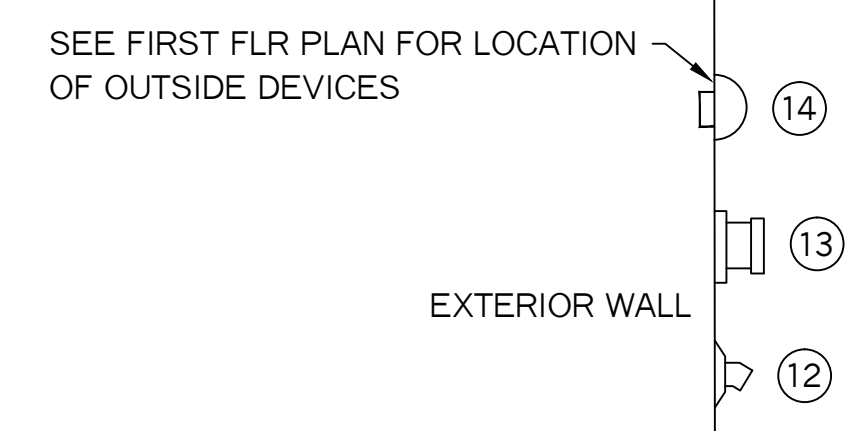
TOTAL HD'S= 24



**ANTI-FREEZE LOOP DETAIL**  
 N.T.S.

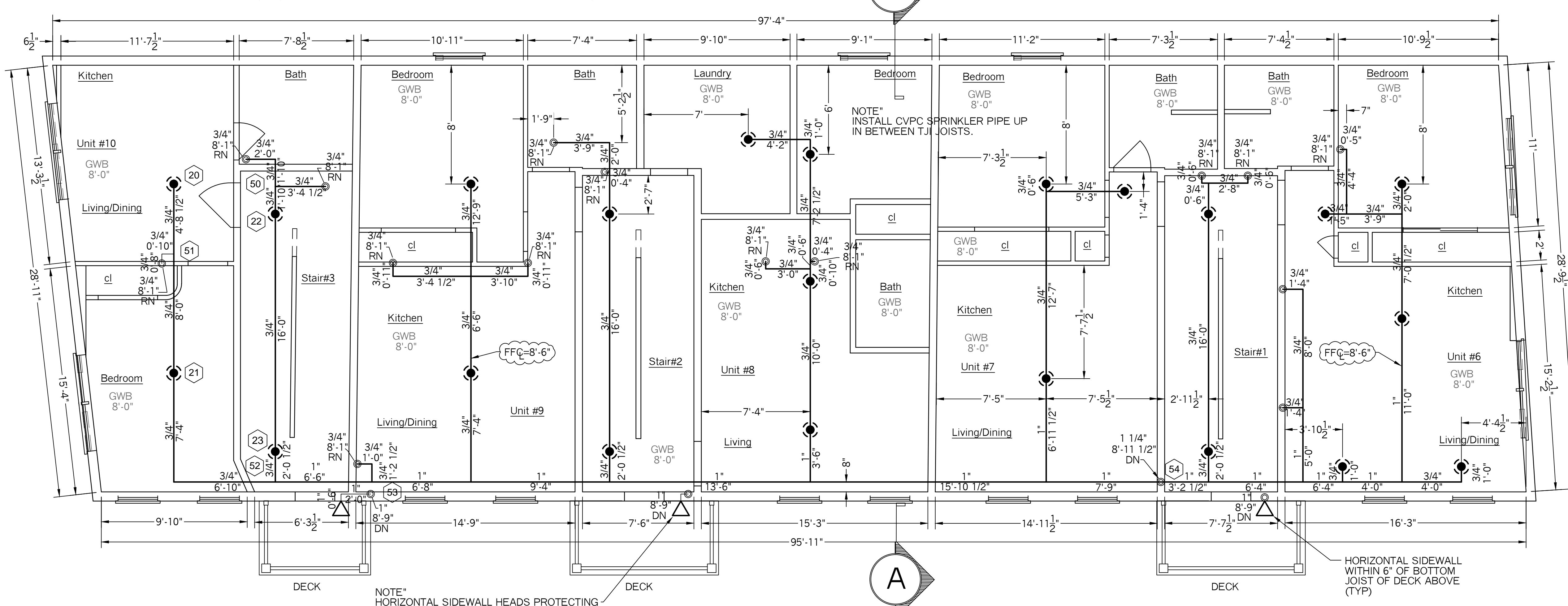
- (A) 1" SHUT-OFF VALVE (N.O.)
- (B) 1/4" TEST VALVES
- (C) 1" CHECK VALVE W/ 1/32" HOLE DRILLED IN THE CLAPPER
- (D) 1/2" DRAIN VALVE

TOTAL SYSTEM CAPACITY



- VALVE RISER LEGEND**
- (1) 2" CTS PLASTIC U.G. SPIGOT (BY OTHER'S)
  - (2) 2" FORD ADAPTOR (BY OTHER'S)
  - (3) 2" FILLER PC
  - (4) 2 1/2" BUTTERBALL VALVE, W/ TAMPER SWITCH (N.O.)
  - (5) 2 1/2" AMES COLT "C200" DOUBLE CHECK BACKFLOW PREVENTER
  - (6) WATER PRESSURE GAUGE (3.5" DIA.)
  - (7) POTTER VSR-S VANE TYPE FLOW SWITCH, WIRED BY OTHER'S
  - (8) 1" TEST AN DRAIN VALVE W/ PRESSURE RELIEF VLV (N.C.) (7/16" TEST ORIFICE)
  - (9) 2" CHECK VALVE
  - (10) 1/2" AUTOMATIC BALL DRIP
  - (11) SPARE HEAD BOX, 6 HD CAPACITY W/ WRENCH
  - (12) 1" GALV. 45 ELBOW W/ GALV. GRINNELL PLATE (MAIN DRAIN)
  - (13) 2 1/2" SINGLE FDC W/ WALL PLATE, CAP & CHAIN
  - (14) ELECTRIC BELL, 6" DIA., W/ BACKBOX (MOUNTED TO OUTSIDE AND WIRED BY OTHERS)

**VALVE RISER DETAIL**  
 N.T.S.



**SECOND FLOOR PLAN**  
 FLOOR AREA = 2,776.0  
 FLR ELEV: 108.75'  
 SCALE: 1/4" = 1'-0"

**SYSTEM SYMBOL LEGEND:**

- ◀ = WET SHOT-GUN RISER
- = HYDRANT
- ① = HYDRAULIC CALCULATION REFERENCE POINT
- = HANGER
- N.O. = NORMALLY OPEN
- N.C. = NORMALLY CLOSED
- = WATER SPIGOT LOCATION

**SPRINKLER HEAD INFORMATION, FOR THIS FLOOR ONLY**

QTY	SIZE	ORIFICE	K-FACTOR	DESCRIPTION	MODEL	TEMP	ESCUTCHEON	SYMBOL
22	1/2"	7/16"	4.9	VIKING RES. WHITE HOR. SIDEWALL	VK468	155	RECESSED	◀
4	1/2"	1/2"	5.6	VIKING WHITE "QR" HOR. SIDEWALL	VK305	155	RECESSED	◀

TOTAL HD'S= 26

PROJECT NAME: <b>48 WILMOT ST. APT'S</b> 48 WILMOT STREET PORTLAND, ME. 04101	FIRE SPRINKLER PLANS AND DETAILS REQUIRED APPROVALS: STATE FIRE MARSHALS OFFICE LOCAL FIRE DEPARTMENT OWNER	RESIDENTIAL FIRE PROTECTION, LLC DATE: 9-1-2016 SCALE: 1/4" = 1'-0"
CONTRACT WITH: <b>CRANDALL TOOTHAKER (OWNER)</b> PH: (207) 797-6066	DRAWN BY: TPP NICET # (08854) CERTIFICATION # 100854	CONTRACT NO. C16025
<b>RESIDENTIAL FIRE PROTECTION</b> 64 DAGGETT HILL ROAD, GREENE, MAINE 04236 PH: (207) 946-3473 FAX: (207) 946-3474		DRAWING NO. 2 OF 2