

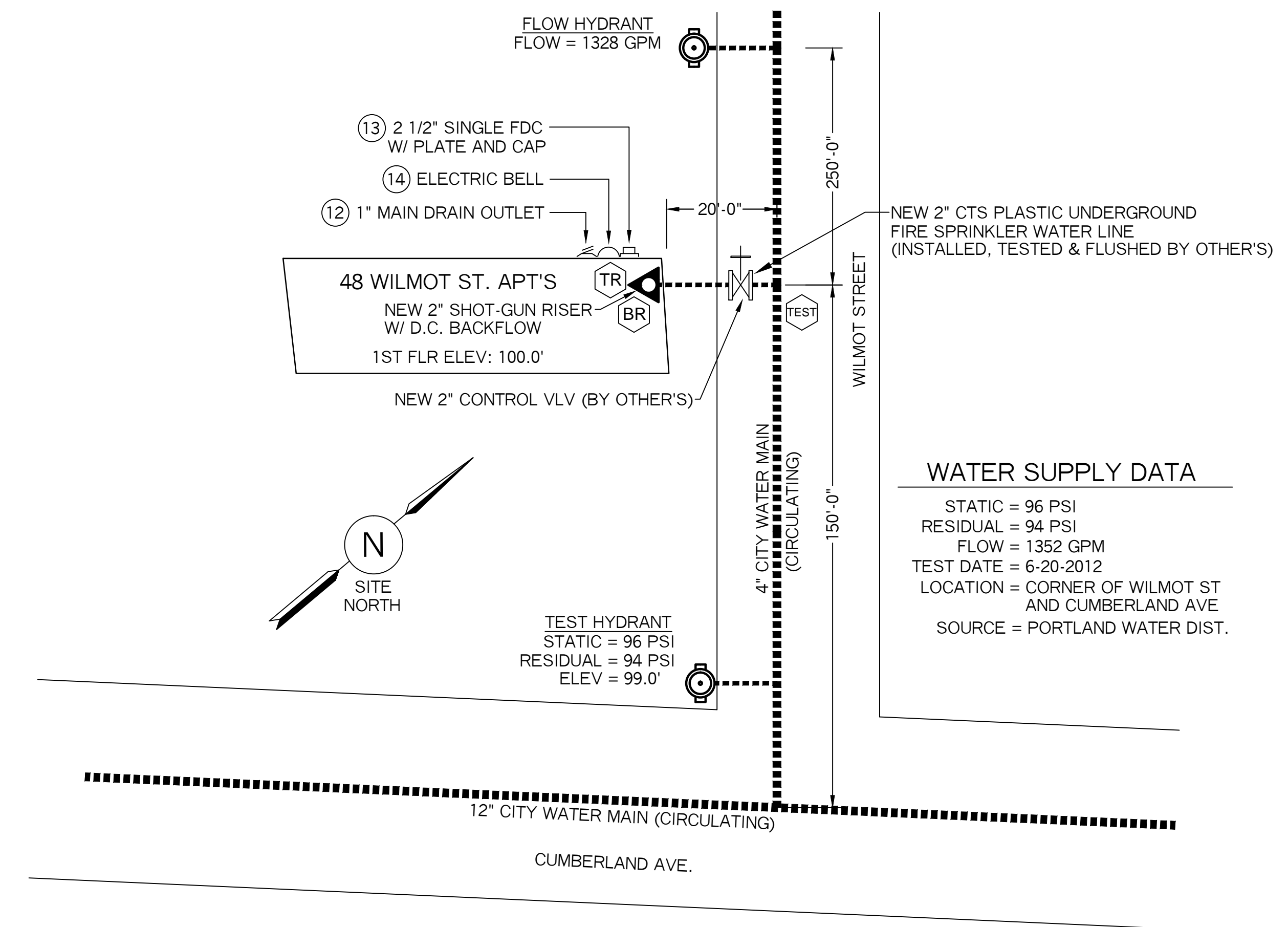
**FIRST FLOOR PLAN**

FLOOR AREA = 2,776.0  
FLR ELEV. = 100.0'  
SCALE: 1/4" = 1'-0"

**SPRINKLER HEAD INFORMATION, FOR THIS FLOOR ONLY**

QTY	SIZE	ORIFICE	K-FACTOR	DESCRIPTION	MODEL	TEMP	ESCUTCHEON	SYMBOL
3	1/2"	7/16"	4.0	VIKING RES. WHITE HOR. SIDEWALL	VK486	155	RECESSED	◀
32	1/2"	7/16"	4.9	VIKING RES. WHITE PENDENT	VK468	155	RECESSED	●
3	1/2"	1/2"	5.6	VIKING WHITE "QR" HOR. SIDEWALL	VK305	155	RECESSED	◀

TOTAL HD'S= 38



**PLOT / SITE PLAN**

SCALE: NTS

**WATER SUPPLY DATA**

STATIC = 96 PSI  
RESIDUAL = 94 PSI  
FLOW = 1352 GPM  
TEST DATE = 6-20-2012  
LOCATION = CORNER OF WILMOT ST AND CUMBERLAND AVE  
SOURCE = PORTLAND WATER DIST.

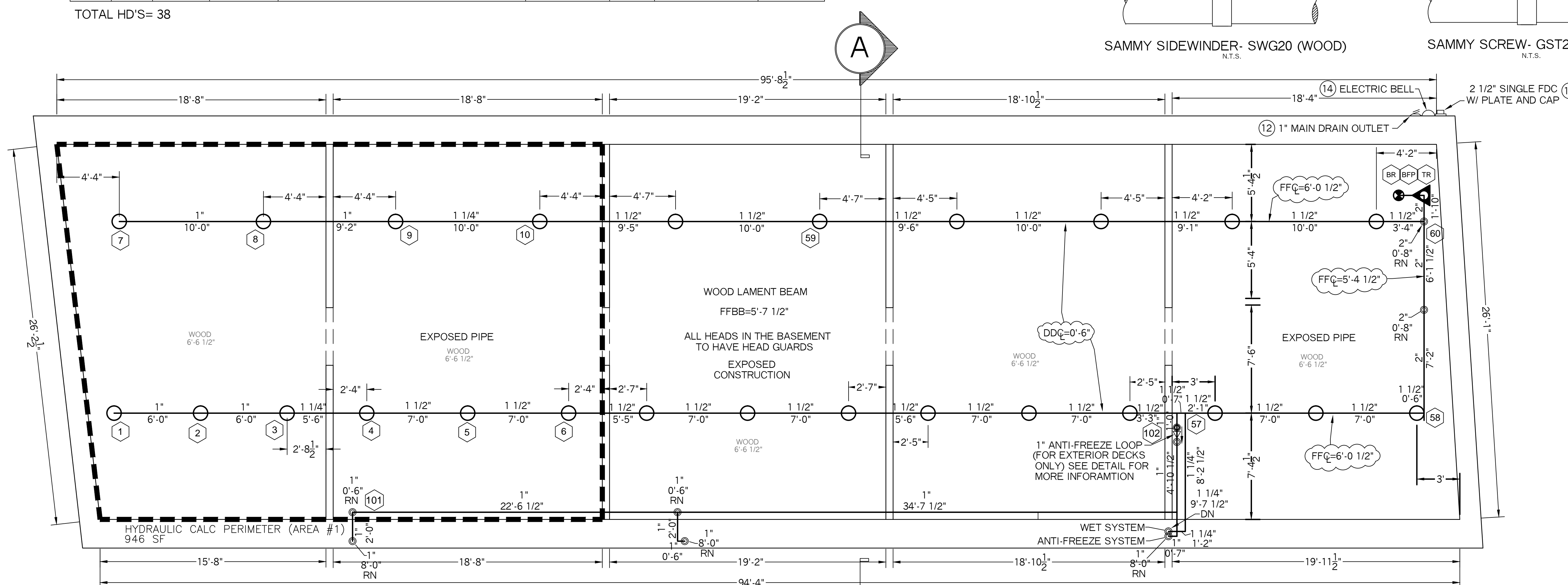
**SYSTEM GENERAL NOTES:**

- A WET PIPE SYSTEM OF AUTOMATIC SPRINKLERS DESIGNED AND INSTALLED PER NFPA 13R (2016 EDITION)
- NEW 2" PLASTIC BLUE-BRUTE SPRINKLER WATER LINE TO BE INSTALLED, TESTED AND FLUSHED BY OTHER'S IN ACCORDANCE WITH NFPA 24 AND LOCAL CODES. RESIDENTIAL FIRE PROTECTION TO START AT END OF 2" CTS IN THE BASEMENT.
- 2" SHOT-GUN VALVE RISER WITH A 2 1/2" DOUBLE CHECK BACKFLOW.
- EXPOSED LINE PIPING IN THE BASEMENT TO BE SCHEDULE 40 BLACK STEEL WITH THREADED C.I. FITTINGS AND BRASS UPRIGHT HEADS ON LINE.
- CVPC BLAZEMASTERS PLASTIC PIPE AND FITTINGS TO BE INSTALLED ON THE FIRST, SECOND AND THIRD FLOORS. ALL CVPC PIPE TO BE CONCEALED FROM VIEW, INSTALLED IN WALLS AND ABOVE GWB CEILINGS. WHITE CONCEALED
- WHITE RECESSED RESIDENTIAL PENDENT HEADS WILL BE INSTALLED IN THE CEILINGS AND WHITE RECESSED RESIDENTIAL SIDEWALL HEADS WILL BE INSTALLED ON THE WALLS.

**NFPA 13R NOTES:**

SPRINKLERS SHALL BE INSTALLED IN ALL AREA'S EXCEPT THE FOLLOWING:

- BATHROOM'S WHERE THE AREA DOES NOT EXCEED 55 SF
- CLOTHES CLOSET'S, LINEN CLOSET'S AND PANTRIES THAT MEET THE FOLLOWING CONDITIONS:
  - THE AREA OF THE SPACE DOES NOT EXCEED 24 SF
  - THE LEAST DIMENSION DOES NOT EXCEED 3'-0"
  - THE WALLS AND CEILINGS ARE SURFACED WITH NON-COMBUSTIBLE OR LIMITED COMBUSTIBLE MATERIALS.
- \* SPRINKLERS SHALL BE INSTALLED IN ANY CLOSET USED FOR HEATING OR AIR CONDITIONING EQUIPMENT
- PORCHES, BALCONIES, CORRIDORS AND STAIRS THAT ARE OPEN AND ATTACHED
- ATTICS, PENTHOUSES, EQUIPMENT ROOMS, ELEVATOR MACHINE ROOMS, CONCEALED SPACES DEDICATED EXCLUSIVELY TO AND CONTAINING ONLY DWELLING UNIT VENTILATION EQUIPMENT, CRAWL SPACES, FLOOR/CEILING SPACES, NON-COMBUSTIBLE ELEVATOR SHAFTS WITH THE CAR IN COMPLIANCE WITH ANSI A17.1 "SAFETY CODE FOR ELEVATORS" AND OTHER CONCEALED SPACES THAT ARE NOT USED OR INTENDED FOR LIVING PURPOSES OR STORAGE AND DO NOT CONTAIN FUEL FIRED EQUIPMENT
- CLOSETS ON EXTERIOR BALCONIES, REGARDLESS OF SIZE, AS LONG AS THERE ARE NO DOORS OR UNPROTECTED PENETRATIONS FROM THE CLOSET DIRECTLY INTO THE DWELLING UNIT.



**BASEMENT PLAN**

FLOOR AREA = 2,472.0  
FLR ELEV. = 92.58'  
SCALE: 1/4" = 1'-0"

**SPRINKLER HEAD INFORMATION, FOR THIS FLOOR ONLY**

QTY	SIZE	ORIFICE	K-FACTOR	DESCRIPTION	MODEL	TEMP	ESCUTCHEON	SYMBOL
25	1/2"	1/2"	5.6	VIKING "QR" BRASS UPRIGHT	VK300	155	NONE	○

TOTAL HD'S= 25

HYDRAULIC CALCULATION INFORMATION			
LOCATION: BASEMENT (AREA #1)			
BASIS OF DESIGN: NFPA 13, 2016 EDITION			
DENSITY AREA OF COVERAGE .15 946 SQ FT			
OCCUPANCY: BUSINESS MISC. STORAGE			
SPRINKLERS:	TOTAL 10	THRD 1/2"	ORIFICE TEMP 155
SYSTEM DEMAND AT BASE OF RISER (BOR):			
PRESSURE 64.85 PSI	FLOW 228.92 GPM	HOSE 250	
SAFETY MARGIN: 10.65 PSI			

PROJECT NAME: <b>48 WILMOT ST. APT'S</b> 48 WILMOT STREET PORTLAND, ME. 04101	FIRE SPRINKLER PLANS AND DETAILS REQUIRED APPROVALS: STATE FIRE MARSHALS OFFICE LOCAL FIRE DEPARTMENT OWNER	RESIDENTIAL FIRE PROTECTION, LLC DATE: 9-1-2016 SCALE: 1/4" = 1'-0"
CONTRACT WITH: <b>CRANDALL TOOTHAKER (OWNER)</b> PH: (207) 797-6066	DRAWN BY: TFP NICET # (06854) CERTIFICATION # 100856	CONTRACT NO. C16025 DRAWING NO. 1 OF 2
<b>RESIDENTIAL FIRE PROTECTION</b> 64 DAGGETT HILL ROAD, GREENE, MAINE 04236 PH: (207) 946-3473 FAX: (207) 946-3474		
CHECKED BY: SJC NICET # (06854) CERTIFICATION # 78065		CONTRACTOR LICENSE #511 CONTRACTOR RMS #80