

**GRANT HAYS ASSOCIATES**  
 ARCHITECTURE & INTERIOR DESIGN  
 P.O. BOX 6179 FALMOUTH MAINE 04105  
 207.871.5900 www.granthays.com

PROJECT NAME  
 15 UNIT APARTMENT BUILDING  
 48 WILMOT STREET  
 PORTLAND, MAINE 04101

REVISIONS  
 07.2016  
 REVISED PER PLDG. INSP. COMMENTS

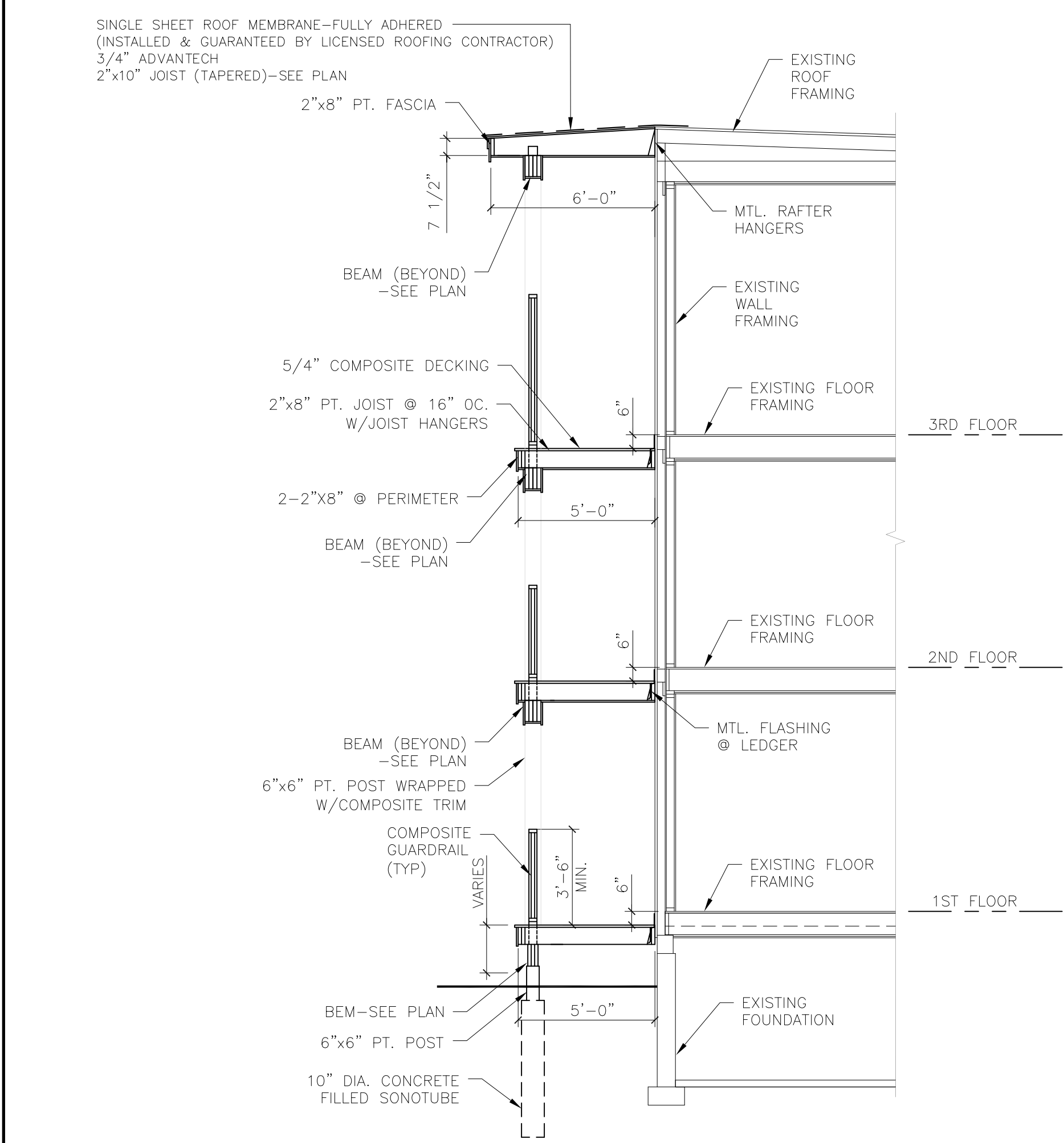
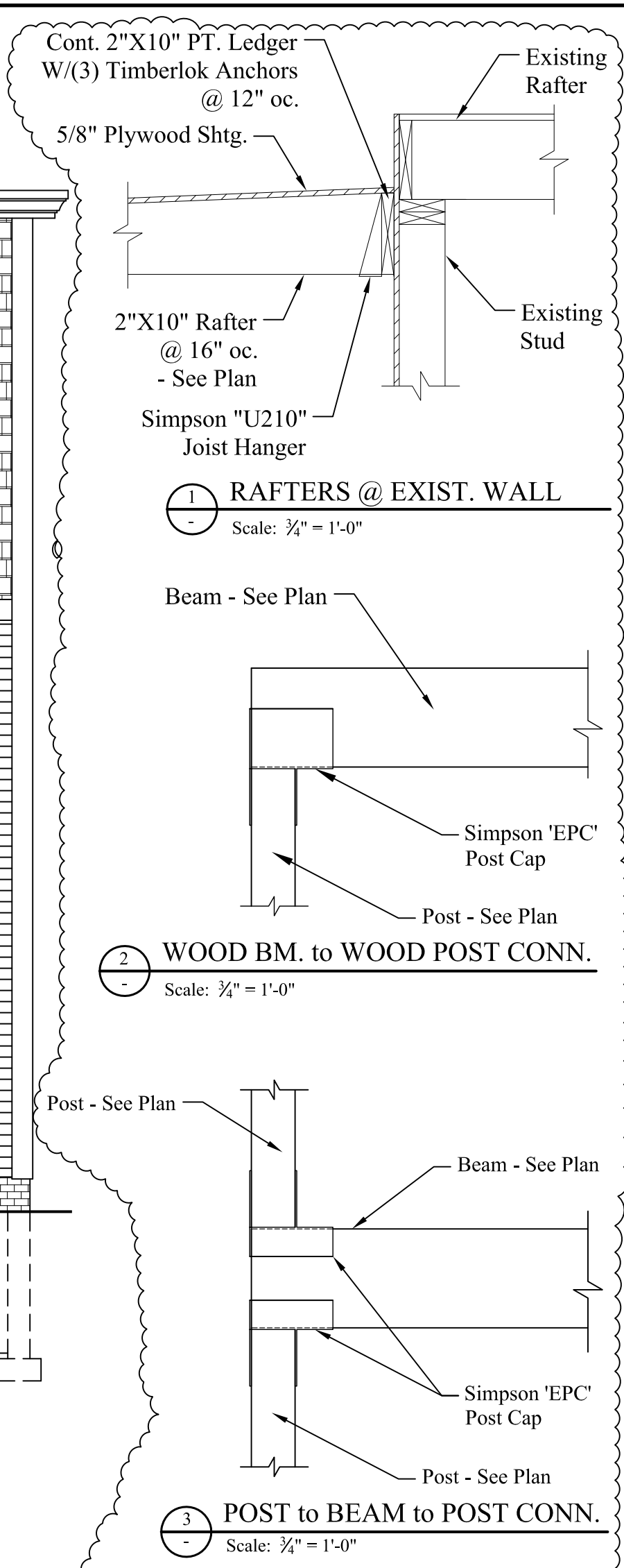
DATE: 30 MAY 2016  
 SCALE: 1/4" = 1'-0"  
 DRAWN: JAM/MFH  
 JOB NO.  
 SHEET

**A7**  
 COPYRIGHT REPRODUCTION OR RELIANCE ON THIS DOCUMENT WITHOUT WRITTEN PERMISSION FROM GRANT HAYS ASSOCIATES IS PROHIBITED.

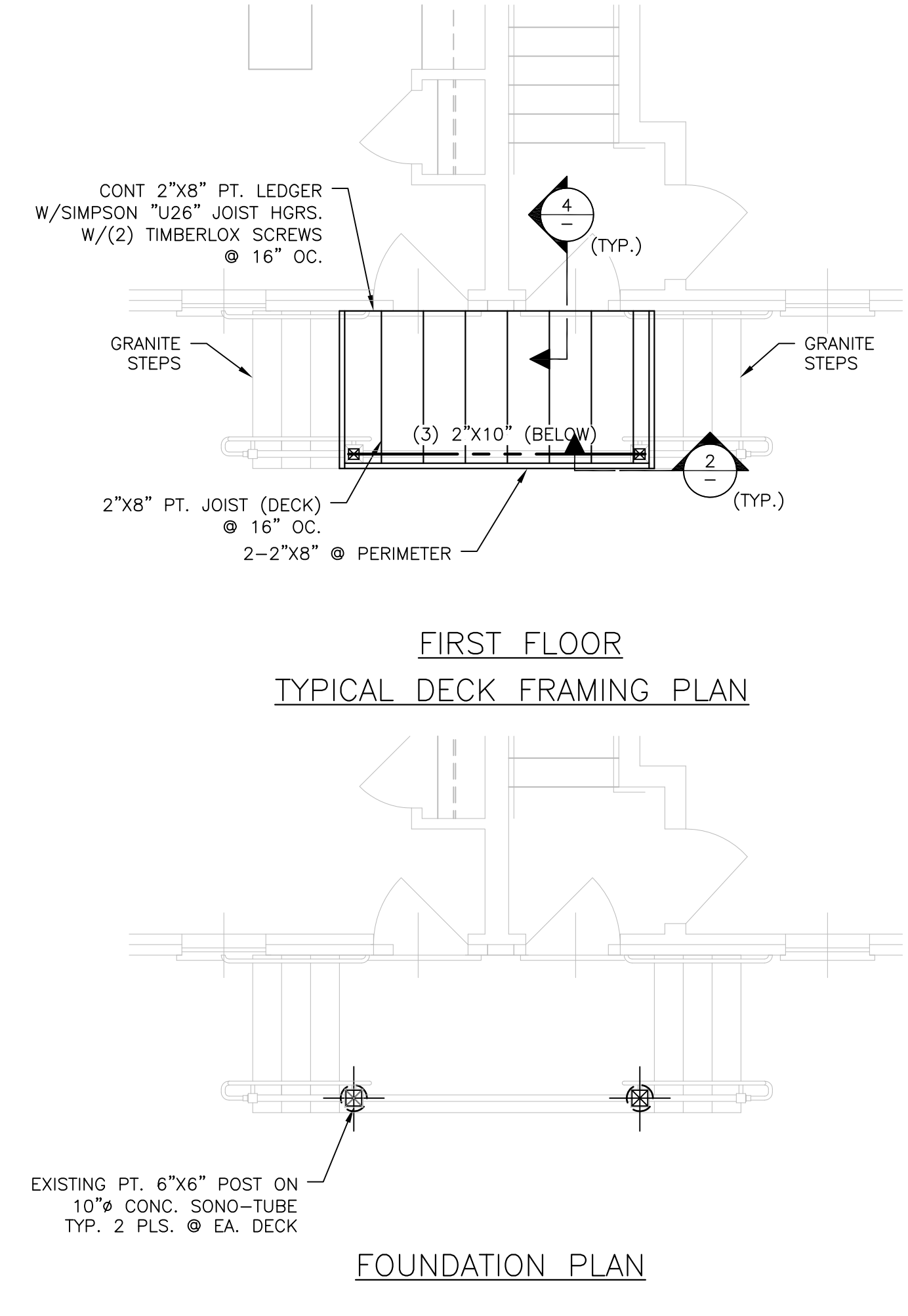


RIGHT SIDE ELEVATION

FRONT ELEVATION



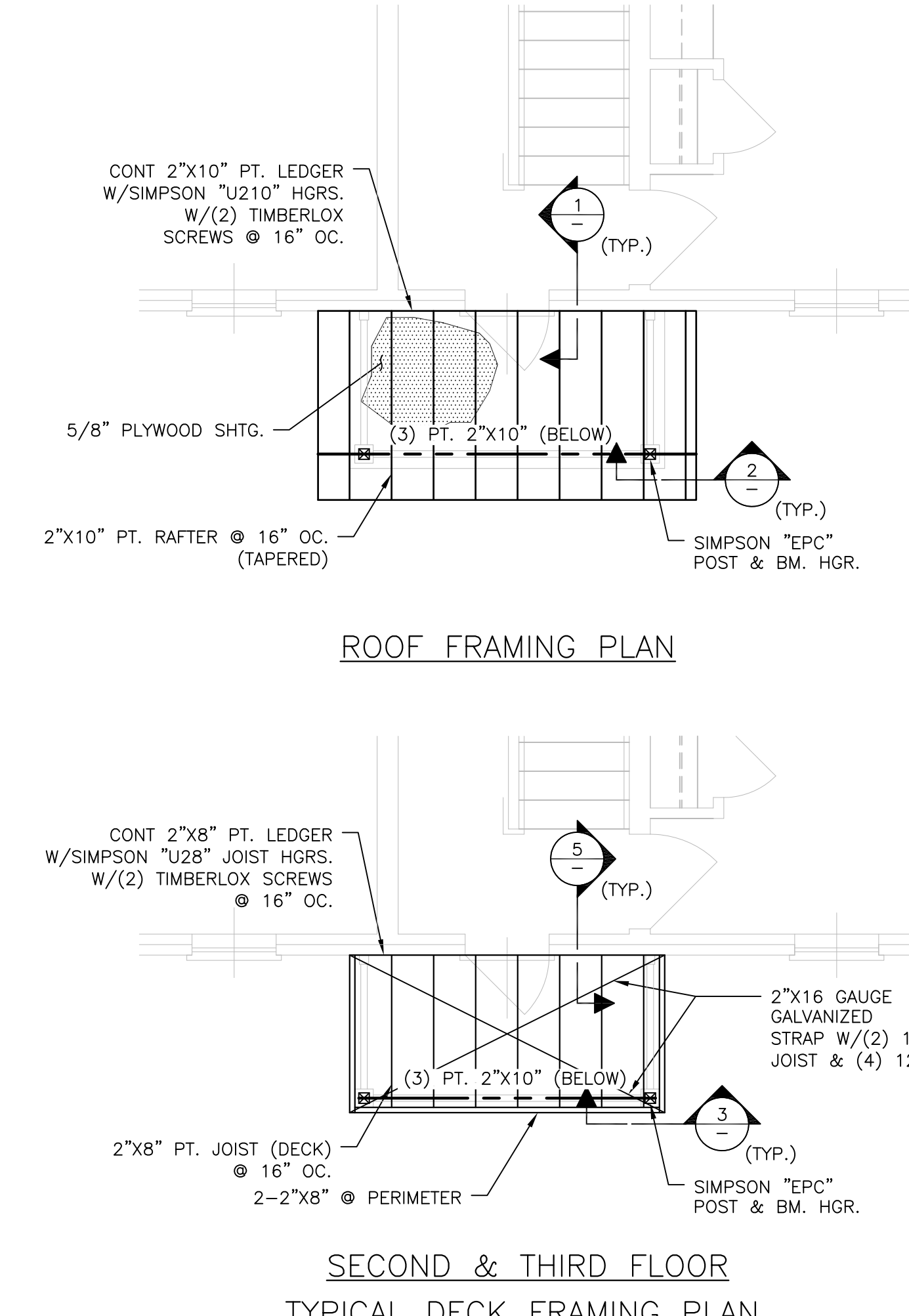
**SECTION**  
 SCALE: 1/4" = 1'-0"



FIRST FLOOR  
 TYPICAL DECK FRAMING PLAN

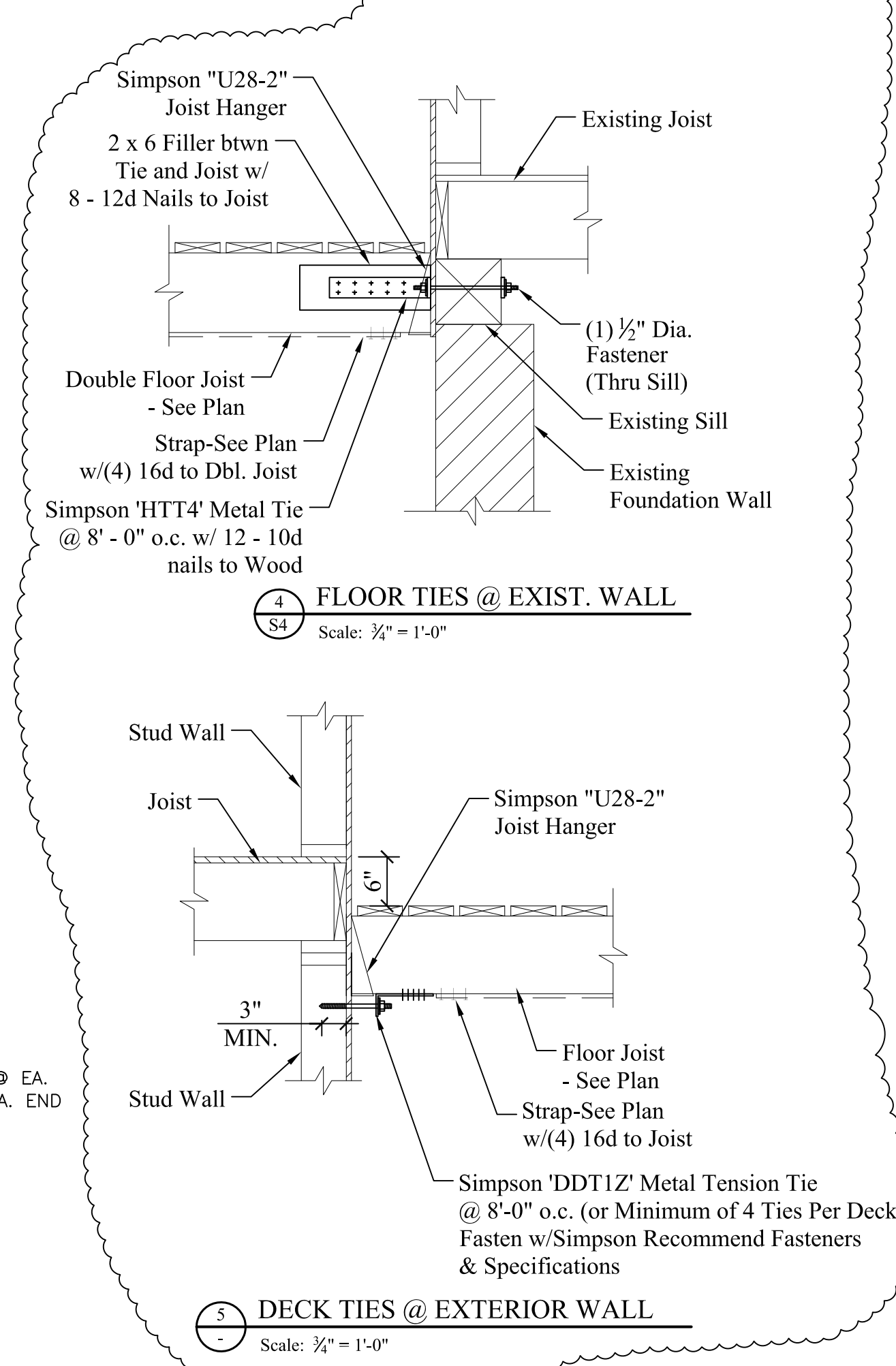
FOUNDATION PLAN

SECOND & THIRD FLOOR  
 TYPICAL DECK FRAMING PLAN



ROOF FRAMING PLAN

SECOND & THIRD FLOOR  
 TYPICAL DECK FRAMING PLAN



FLOOR TIES @ EXIST. WALL  
 SCALE: 3/4" = 1'-0"

DECK TIES @ EXTERIOR WALL  
 SCALE: 3/4" = 1'-0"

