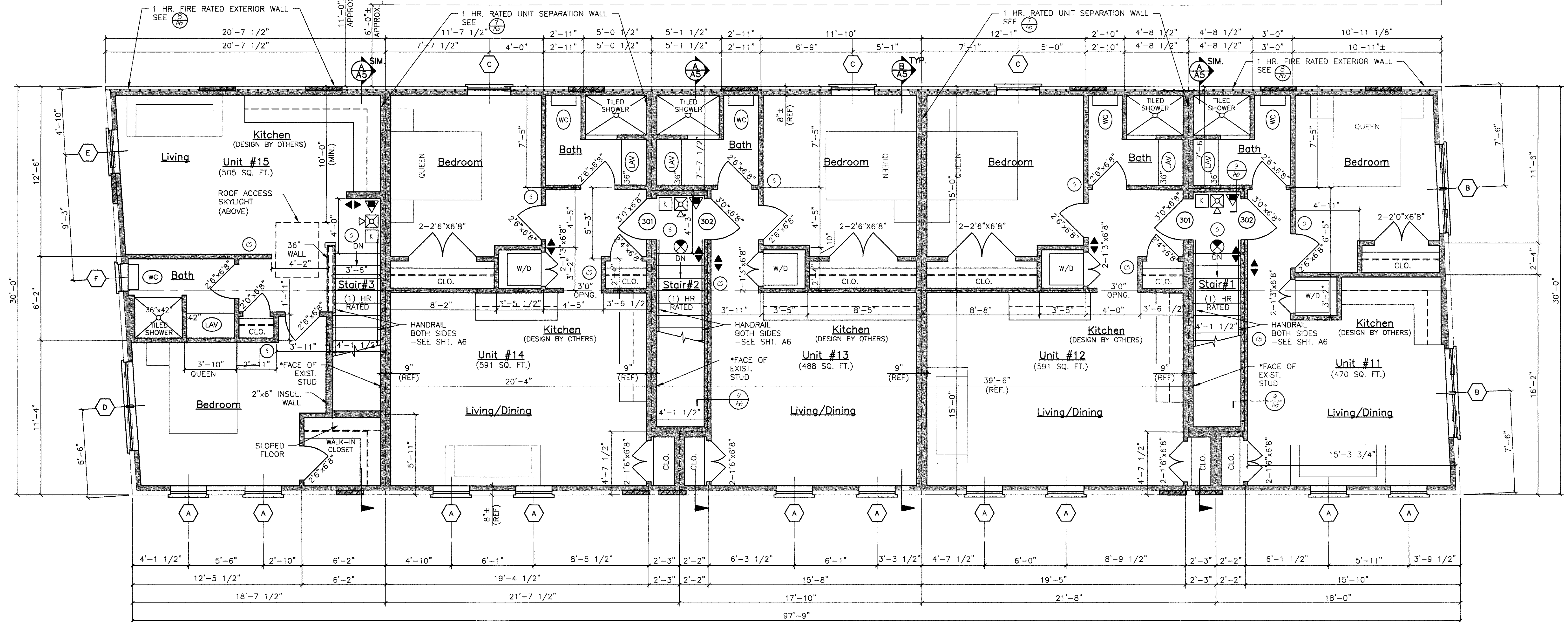


IE:
 - DIMENSIONS ARE REFERENCE ONLY. ALL DIMENSIONS SHALL BE
 LD VERIFIED BEFORE CONSTRUCTION BEGINS.



PROPOSED 3RD FLOOR PLAN

NPPA LEGEND	
	EXIT LIGHT
	FIRE EXTINGUISHER
	FIRE ALARM PULL STATION
	FIRE ALARM PANEL
	EMERGENCY LIGHT
	FIRE ALARM HORN/STROKE UNIT
	SMOKE DETECTOR W/ SOUNDER BASE & STROBE (INTERCONNECTED)
	COMBINATION CARBON MONOXIDE/ SMOKE DETECTOR W/ SOUNDER BASE & STROBE (INTERCONNECTED)
	HEAT DETECTOR
	ANNUNCIATOR PANEL
	"NOT AN EXIT" SIGN
	KNOCK BOX
	1 HR RATED PARTITION
	1 HR RATED SEPARATION PARTITION

LIFE SAFETY NOTES	
1.	THE BUILDING SHALL HAVE AN NPPA FIRE SUPPRESSION SPRINKLER SYSTEM INSTALLED. SPRINKLER SYSTEM SHALL BE INSTALLED BY A CERTIFIED SPRINKLER CONTRACTOR AND SHALL BE REVIEWED AND APPROVED BY THE STATE OF MAINE FIRE INSPECTION AS WELL AS THE LOCAL AUTHORITY HAVING JURISDICTION. THE CONTRACTOR SHALL BEAR SOLE RESPONSIBILITY FOR THE DESIGN AND INSTALLATION OF THE SYSTEM FOR OCCUPANCY.
2.	THE BUILDING SHALL HAVE A FIRE ALARM SYSTEM AS REQUIRED FOR COMPLIANCE WITH NPPA LIFE SAFETY CODE COORDINATE WITH SPRINKLER SYSTEM. VERIFY LOCATION OF ALARM AND NOTIFICATION PANELS WITH THE AUTHORITY HAVING JURISDICTION.
3.	SEE ACCESSIBILITY DETAILS FOR MOUNTING HEIGHTS OF LIFE SAFETY DEVICES.
4.	ALL ALARMS AND DETECTORS SHALL BE INTERCONNECTED WITHIN EACH LIVING UNIT.
5.	REFER TO THE WINDOW SCHEDULE FOR EGRESS WINDOWS.

GENERAL NOTES	
1.	ALL HORIZONTAL UNIT SEPARATIONS (FLOOR/CEILING/ROOF) ASSEMBLIES SHALL BE 1 HR. FIRE RATED/ STC 90. -SEE &
2.	ALL VERTICAL UNIT SEPARATIONS (TENANT WALLS) SHALL BE 1 HR. FIRE RATED/ STC 90. -SEE
3.	ALL STAIR ENCLOSURES SHALL BE 1 HR. FIRE RATED. -SEE &
4.	THREE FIRST FLOOR UNITS SHALL BE ADA ADAPTABLE. -SEE ADA UNIT PLAN
5.	SEE SHEET A6 FOR STAIR DETAILS.
6.	REMOVE EXISTING DECKS & FIRE ESCAPES IN THEIR ENTIRETY.
7.	SEE SHEET A7 FOR ACCESSIBILITY DETAILS AND ADAPTABLE ADA UNITS.

LEGEND	
SYMBOL	DESCRIPTION
	NEW WALL
	NEW WALL/EXISTING WALL W/INFILL
	EXISTING WALL
	THIN LINEWEIGHT DENOTES EXISTING CONDITIONS
	HEAVY LINEWEIGHT DENOTES NEW CONDITIONS
	DEMOLISHED OR REMOVED STRUCTURE OR EQUIPMENT

