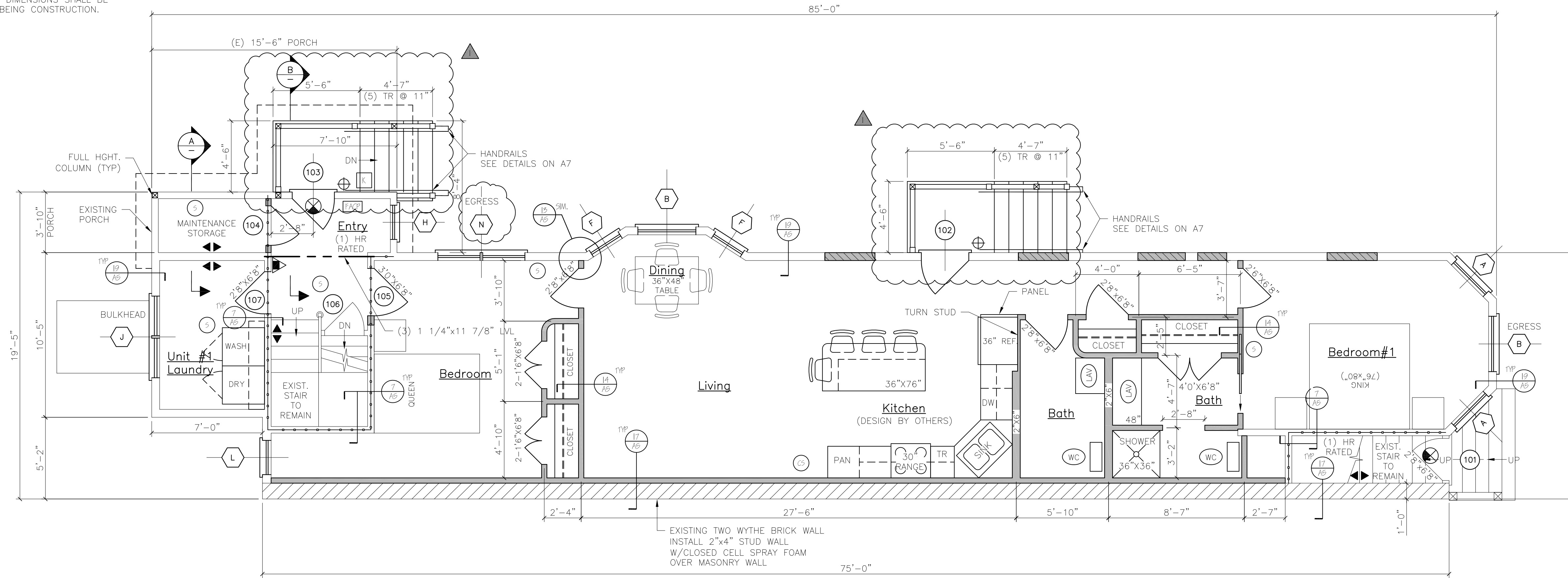


NOTES:

1. ALL DIMENSIONS ARE FOR REFERENCE ONLY. ALL DIMENSIONS SHALL BE FIELD VERIFIED BEFORE ORDERING SUPPLIES OR BEING CONSTRUCTION.



FIRST FLOOR PLAN  
Unit#1

DOOR SCHEDULE						
NO.	SIZE (WxH) (E)=EXISTING	INSUL	FIRE RATING	HARDWARE	SWING	REMARKS
101	5'-0" x 6'-8"	R-7	1 HR	HW-5	SEE PLAN	* DOOR/FRAME ASSEMBLY, SELF CLOSING PANEL
102	2'-8" x 6'-8" (E)	R-7	1 HR	HW-1	SEE PLAN	* DOOR/FRAME ASSEMBLY, SELF CLOSING, FULL VIEW
103	3'-0" x 6'-8" (E)	R-7	1 HR	HW-3	SEE PLAN	* DOOR/FRAME ASSEMBLY, SELF CLOSING, 9 LITE
104	5'-0" x 6'-8"	R-7	1 HR	HW-3	SEE PLAN	* DOOR/FRAME ASSEMBLY, SELF CLOSING, FULL VIEW
105	2'-8" x 6'-8"	R-7	1 HR	HW-4	SEE PLAN	* DOOR/FRAME ASSEMBLY, SELF CLOSING, PANEL
106	3'-0" x 6'-8" (E)	R-7	1 HR	HW-2	SEE PLAN	* DOOR/FRAME ASSEMBLY, SELF CLOSING, PANEL (REPLACE EXISTING DOOR)
107	2'-6" x 6'-8" (E)	R-7	1 HR	HW-3	SEE PLAN	* DOOR/FRAME ASSEMBLY, SELF CLOSING, PANEL
108	2'-8" x 6'-8" (E)	R-7	1 HR	HW-4	SEE PLAN	* DOOR/FRAME ASSEMBLY, SELF CLOSING, PANEL
109	5'-0" x 6'-8"	R-7	1 HR	HW-2	SEE PLAN	* DOOR/FRAME ASSEMBLY, SELF CLOSING
110	2'-8" x 6'-8" (E)	R-7	1 HR	HW-4	SEE PLAN	* DOOR/FRAME ASSEMBLY, SELF CLOSING (REPLACE EXISTING DOOR)
111	2'-8" x 6'-8" (E)	R-7	1 HR	HW-2	SEE PLAN	* DOOR/FRAME ASSEMBLY, SELF CLOSING (REPLACE EXISTING DOOR)
112	2'-8" x 6'-8" (E)	R-7	1 HR	HW-2	SEE PLAN	* DOOR/FRAME ASSEMBLY, SELF CLOSING (REPLACE EXISTING DOOR)

NOTE: SEE FLOOR PLANS FOR UNIT INTERIOR DOOR SIZES, SWING AND TYPE. REPLACE EXISTING DOORS & FRAMES NOTED IN DOOR SCHEDULE AS REQUIRED.

HARDWARE	DESCRIPTION	REMARKS
HW-1	3 BUTTS*, DOOR ENTRY LEVER LOCKSET, THRESHOLD WEATHER STRIPPING, DOOR BOTTOM	* GC OPTIONAL, SELF CLOSING BUTTS OR DOOR CLOSERS
HW-2	3 BUTTS*, DOOR ENTRY LEVER LOCKSET, THRESHOLD WEATHER STRIPPING, DOOR BOTTOM, DOOR VIEWER	* GC OPTIONAL, SELF CLOSING BUTTS OR DOOR CLOSERS
HW-3	3 BUTTS*, DOOR ENTRY LEVER LOCKSET, THRESHOLD WEATHER STRIPPING, DOOR BOTTOM	* GC OPTIONAL, SELF CLOSING BUTTS OR DOOR CLOSERS
HW-4	3 BUTTS*, DOOR ENTRY LEVER LOCKSET	* GC OPTIONAL, SELF CLOSING BUTTS OR DOOR CLOSERS
HW-5	3 BUTTS*, DOOR PASSAGE LEVER LATCH SET W/ EXIT FUNCTION	* GC OPTIONAL, SELF CLOSING BUTTS OR DOOR CLOSERS
INTERNAL UNIT DOORS	3 BUTTS, LATCH SET EXCEPT PRIVACY SET AT BATHROOMS	* GC OPTIONAL, SELF CLOSING BUTTS OR DOOR CLOSERS

WINDOW SCHEDULE						
NO.	SIZE (WxH)	TYPE	FIRE RATING	GLAZING	ROUGH OPENING (WxH)	REMARKS
(A)	1W2052	DOUBLE HUNG	NONE	TEMP., INSUL., GL.	2'-10 1/2" x 4'-5 1/4"	ANDERSEN OR EQUIV., (TEMPERED WINDOW)
(B)	1W2442	DOUBLE HUNG	NONE	TEMP., INSUL., GL.	1'2"2, IN FIELD	ANDERSEN OR EQUIV., (EGRESS & TEMPERED WINDOW)
(C)	1W2052	DOUBLE HUNG	NONE	TEMP., INSUL., GL.	2'-2 1/2" x 4'-5 1/4"	ANDERSEN OR EQUIV., (TEMPERED WINDOW)
(D)	1W2042	DOUBLE HUNG	NONE	TEMP., INSUL., GL.	2'-2 1/2" x 4'-5 1/4"	ANDERSEN OR EQUIV., (TEMPERED WINDOW)
(E)	2-1W2442	DOUBLE HUNG	NONE	INSUL., GL.	4'-11 1/2" x 16'-4" x 5 1/4"	ANDERSEN OR EQUIV.,
(F)	1W2452	DOUBLE HUNG	NONE	TEMP., INSUL., GL.	2'-6 1/2" x 4'-5 1/4"	ANDERSEN OR EQUIV., (TEMPERED WINDOW)
(G)	1W2042	DOUBLE HUNG	NONE	INSUL., GL.	2'-2 1/2" x 4'-11 1/4"	ANDERSEN OR EQUIV.,
(H)	1W2052	DOUBLE HUNG	NONE	TEMP., INSUL., GL.	5'-2 1/2" x 4'-5 1/4"	ANDERSEN OR EQUIV., (EGRESS & TEMPERED WINDOW)
(I)	2-1W2052	DOUBLE HUNG	NONE	TEMP., INSUL., GL.	6'-3 1/2" x 16'-4" x 5 1/4"	ANDERSEN OR EQUIV., (EGRESS & TEMPERED WINDOW)

NOTE: SEE STRUCTURAL HEADER SCHEDULE FOR HEADER SIZE

WINDOW & DOOR SCHEDULE & HARDWARE SETS

NFPA LEGEND	
	EXIT LIGHT
	FIRE EXTINGUISHER
	FIRE ALARM PANEL-LOCATE PER AUI
	EMERGENCY LIGHT
	SMOKE DETECTOR W/ SOUNDER BASE & STROBE (INTERCONNECTED)
	COMBINATION CARBON MONOXIDE / SMOKE DETECTOR W/ SOUNDER BASE & STROBE (INTERCONNECTED)
	KNOCK BOX-LOCATE PER AUI
	1HR RATED PARTITION
	1HR RATED SEPARATION PARTITION

LIFE SAFETY NOTES	
1.	THE BUILDING SHALL HAVE AN NFPA IRR FIRE SUPPRESSION SPRINKLER SYSTEM INSTALLED. SPRINKLER SYSTEM SHALL BE INSTALLED BY A CERTIFIED SPRINKLER CONTRACTOR AND SHALL BE REVIEWED AND APPROVED BY THE STATE OF MAINE FIRE MARSHAL AS WELL AS THE LOCAL AUTHORITY HAVING JURISDICTION. THE CONTRACTOR SHALL BEAR SOLE RESPONSIBILITY FOR THE DESIGN AND INSTALLATION OF THE SYSTEM FOR OCCUPANCY.
2.	THE BUILDING SHALL HAVE A FIRE ALARM SYSTEM AS REQUIRED FOR COMPLIANCE WITH NFPA IOL LIFE SAFETY CODE COORDINATE WITH SPRINKLER SYSTEM, VERIFY LOCATION OF ALARM AND NOTIFICATION PANELS WITH THE AUTHORITY HAVING JURISDICTION.
3.	ALL ALARMS AND DETECTORS SHALL BE INTERCONNECTED.
4.	REFER TO THE WINDOW SCHEDULE FOR EGRESS WINDOWS.

GENERAL NOTES	
1.	ALL HORIZONTAL UNIT SEPARATIONS (FLOOR/CEILING/ROOF) ASSEMBLIES SHALL BE 1HR. FIRE RATED / SIC 50. -SEE  &  &
2.	ALL VERTICAL UNIT SEPARATIONS (PARTIAL WALLS) SHALL BE 1HR. FIRE RATED / SIC 50. -SEE
3.	ALL STAIR ENCLOSURES SHALL BE 1HR. FIRE RATED. -SEE
4.	SEE SHEET A6 FOR HANDRAIL DETAILS

LEGEND	
SYMBOL	DESCRIPTION
	NEW WALL
	NEW WALL/EXISTING WALL W/INFILL
	EXISTING WALL
	THIN LINEWEIGHT DENOTES EXISTING CONDITIONS
	HEAVY LINEWEIGHT DENOTES NEW CONDITIONS
	DEMOLISHED OR REMOVED STRUCTURE OR EQUIPMENT
	EXTERIOR LIGHT

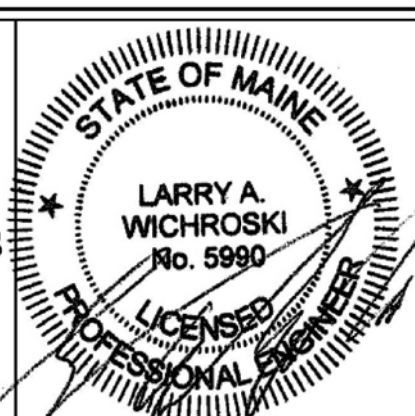
STRUCTURAL HEADER SCHEDULE

LVL's  
5' wide openings - Use (2) 1 3/4" x 9 1/2" LVL's.  
4' wide openings - Use (2) 1 3/4" x 9 1/2" LVL's.  
3' or less openings - Use (3) 2 x 10's.

Second Floor Level:  
5' wide openings - Use (2) 1 3/4" x 9 1/2" LVL's.  
4' wide openings - Use (3) 2 x 10's.  
3' or less openings - Use (2) 2 x 10's.

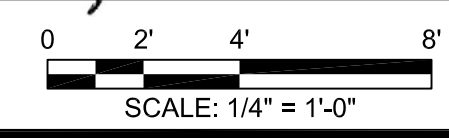
Third Floor Level:  
5' and less openings - Use (2) 2 x 10's.

Engineering Review of Structural Framing System Only.  
ENGINEERING DESIGN PROFESSIONALS  
PO Box 575  
Freeport, Maine 04032  
207-865-9505



50 WILMOT STREET  
MORIN DRAFTING 318-1177  
50 WILMOT STREET, L.L.C.  
477 CONGRESS STREET PORTLAND, MAINE  
FIRST FLOOR PLAN

DRAWN: J. MORIN  
SCALE: 1/4"=1'-0"  
DATE: 11-18-2015  
PLAN NO:



A2