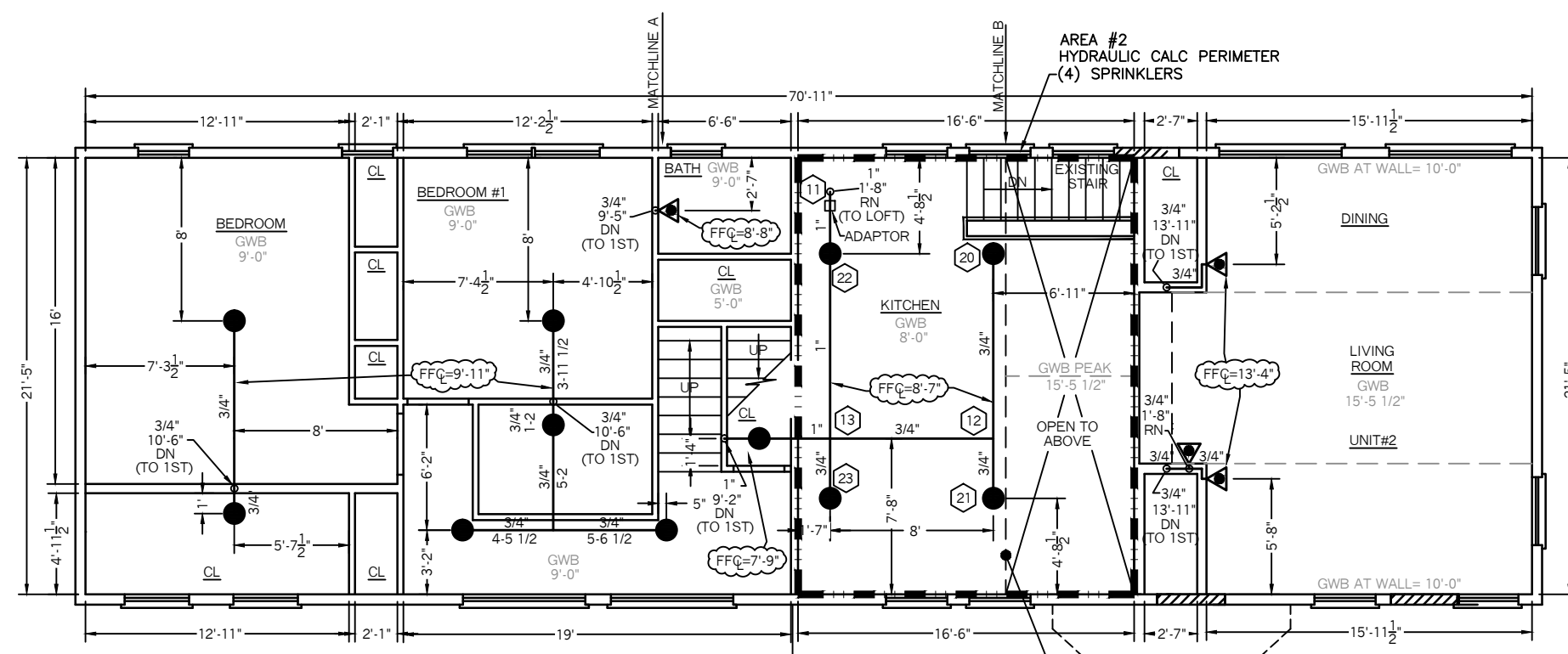


SPRINKLER HEAD INFORMATION

QTY	SIZE	ORIFICE	K-FACTOR	DESCRIPTION	MODEL	TEMP	ESCUOTCHEON	SYMBOL
1	1/2"	7/16"	4.9	VIKING RES. WHITE PENDENT	VK468	155	RECESSED	○
1	1/2"	7/16"	4.9	VIKING RES. WHITE PENDENT	VK494	155	CONCEALED	●

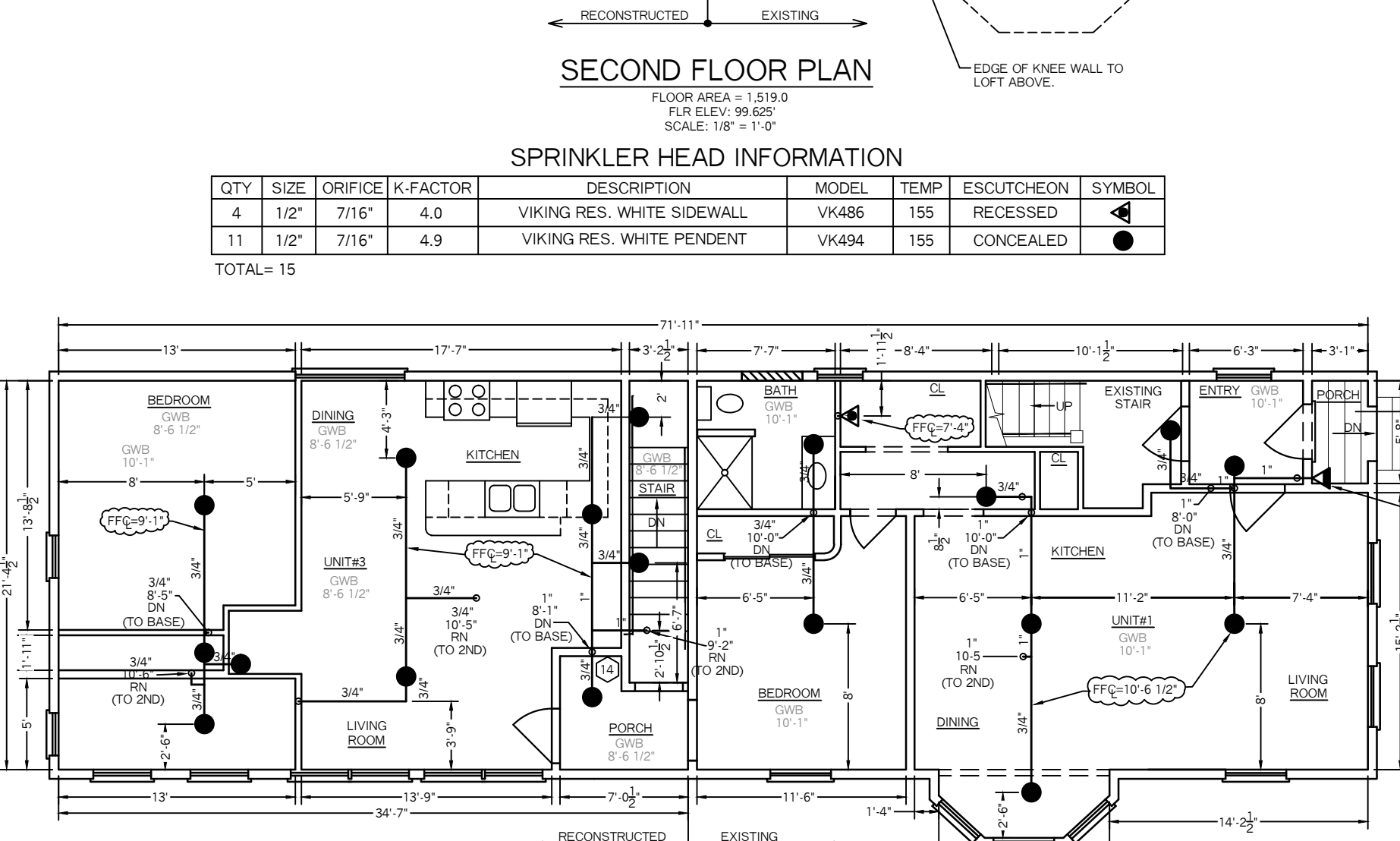
TOTAL= 2



SPRINKLER HEAD INFORMATION

QTY	SIZE	ORIFICE	K-FACTOR	DESCRIPTION	MODEL	TEMP	ESCUOTCHEON	SYMBOL
4	1/2"	7/16"	4.0	VIKING RES. WHITE SIDEWALL	VK486	155	RECESSED	◁
11	1/2"	7/16"	4.9	VIKING RES. WHITE PENDENT	VK494	155	CONCEALED	●

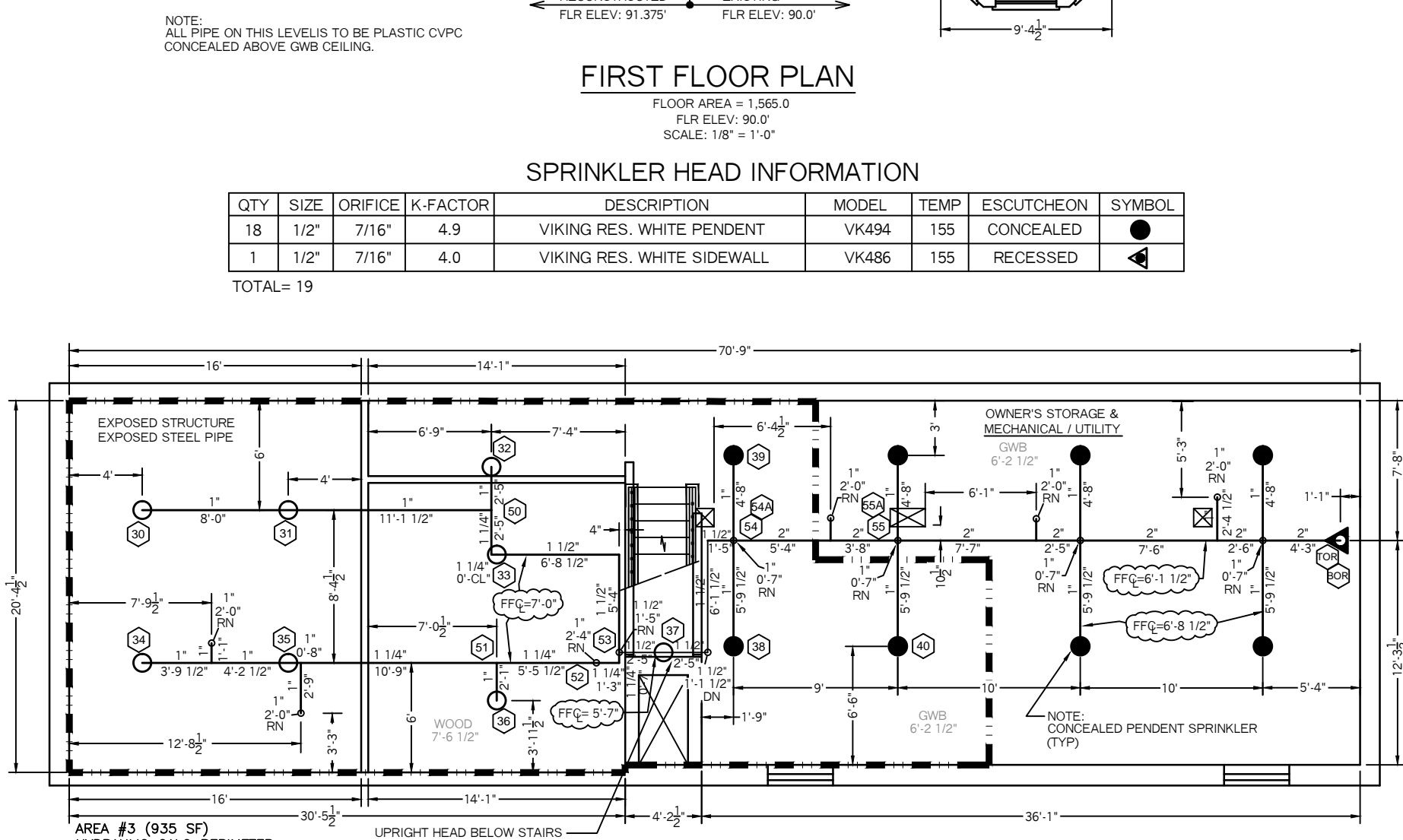
TOTAL= 15



SPRINKLER HEAD INFORMATION

QTY	SIZE	ORIFICE	K-FACTOR	DESCRIPTION	MODEL	TEMP	ESCUOTCHEON	SYMBOL
18	1/2"	7/16"	4.9	VIKING RES. WHITE PENDENT	VK494	155	CONCEALED	●
1	1/2"	7/16"	4.0	VIKING RES. WHITE SIDEWALL	VK486	155	RECESSED	◁

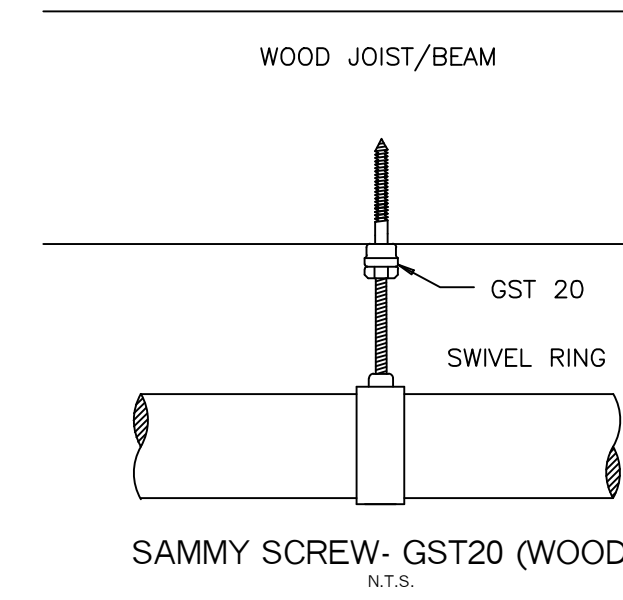
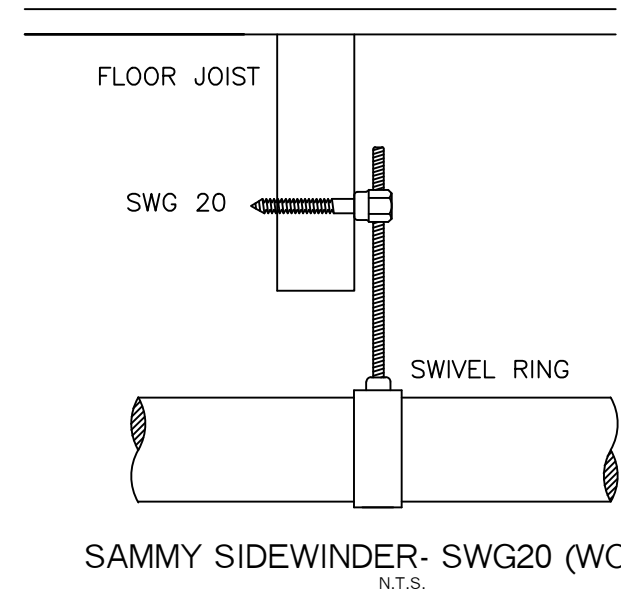
TOTAL= 19



SPRINKLER HEAD INFORMATION

QTY	SIZE	ORIFICE	K-FACTOR	DESCRIPTION	MODEL	TEMP	ESCUOTCHEON	SYMBOL
8	1/2"	1/2"	5.6	VIKING "QR" BRASS UPRIGHT	VK300	155	NONE	○
8	1/2"	1/2"	5.6	VIKING "QR" WHITE PENDENT	VK462	155	CONCEALED	●

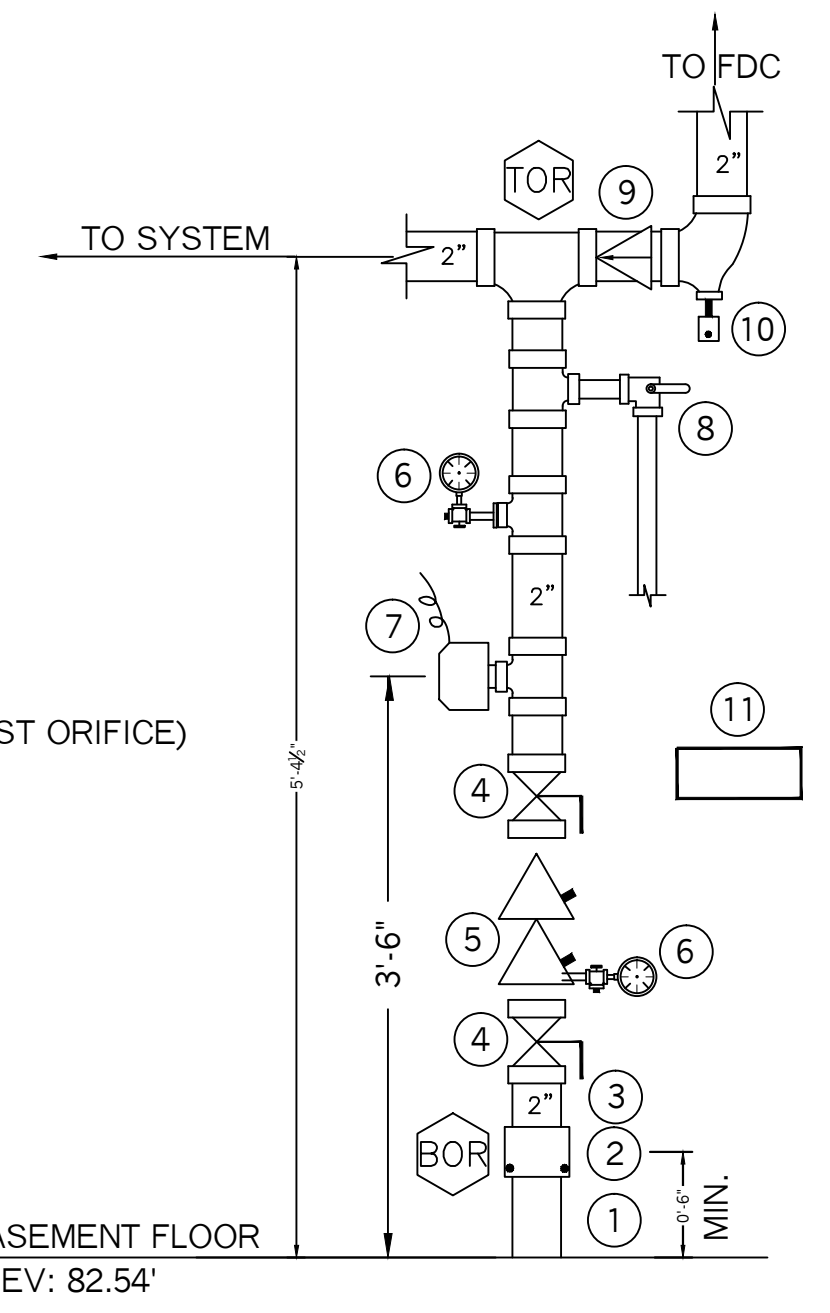
TOTAL= 16



HANGER DETAILS
SCALE: NTS

VALVE RISER LEGEND

- ① 2" CTS PLASTIC U.G. SPIGOT (BY OTHER'S)
- ② 2" FORD ADAPTOR (BY OTHER'S)
- ③ 2" FILLER PC
- ④ 2 1/2" BUTTERBALL VALVE, W/ TAMPER SWITCH (N.O.)
- ⑤ 2 1/2" AMES COLT "C200" DOUBLE CHECK BACKFLOW PREVENTER
- ⑥ WATER PRESSURE GAUGE (3.5" DIA.)
- ⑦ POTTER VSR-S VANE TYPE FLOW SWITCH (WIRE FLOW SWITCH TO ALARM SYSTEM BY OTHER'S)
- ⑧ 1" TEST AN DRAIN VALVE W/ PRESSURE RELIEF VLV (N.C.) (7/16" TEST ORIFICE)
- ⑨ 2" CHECK VALVE
- ⑩ 1/2" AUTOMATIC BALL DRIP
- ⑪ SPARE HEAD BOX, 6 HD CAPACITY W/ WRENCH
- ⑫ 1" GALV. 45 ELBOW W/ GALV. GRINNELL PLATE (MAIN DRAIN)
- ⑬ 2 1/2" SINGLE FDC W/ WALL PLATE, CAP & CHAIN
- ⑭ ELECTRIC BELL, 6" DIA., W/ BACKBOX (MOUNTED TO OUTSIDE AND WIRED BY OTHERS)

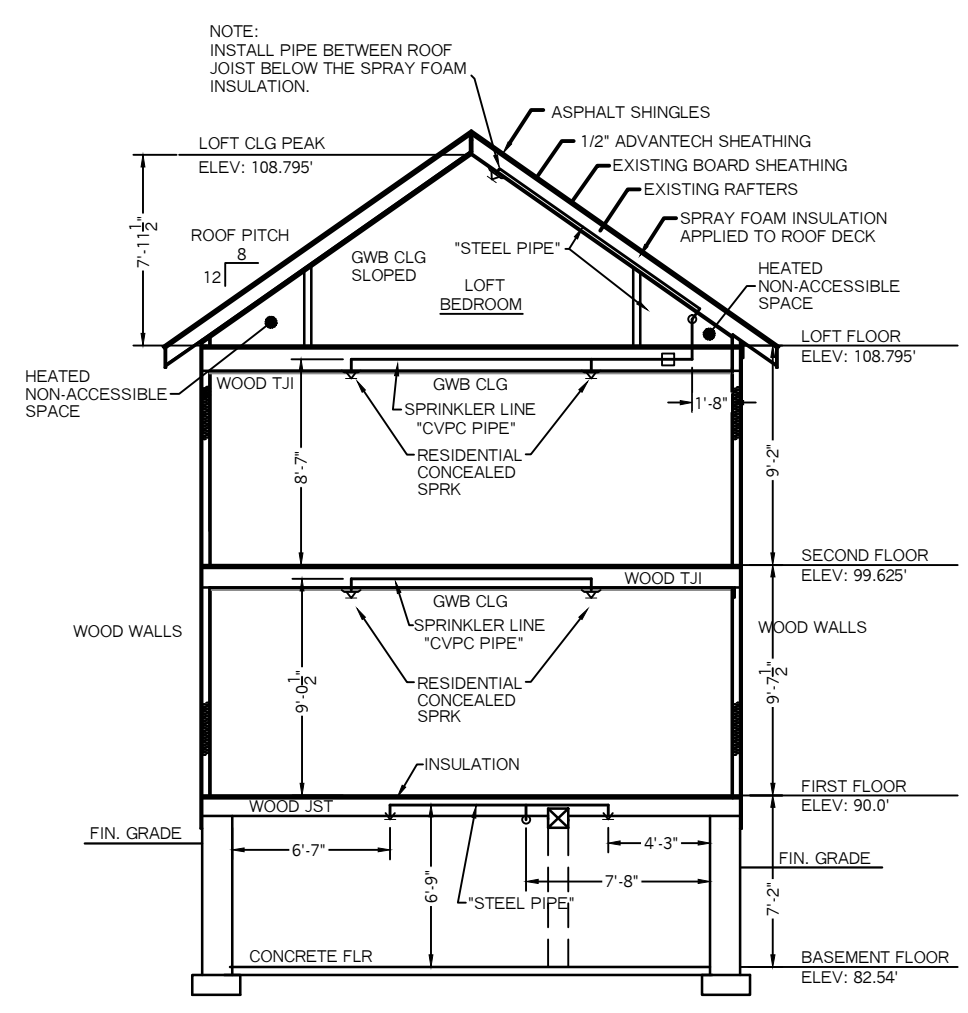


VALVE RISER DETAIL
N.T.S.

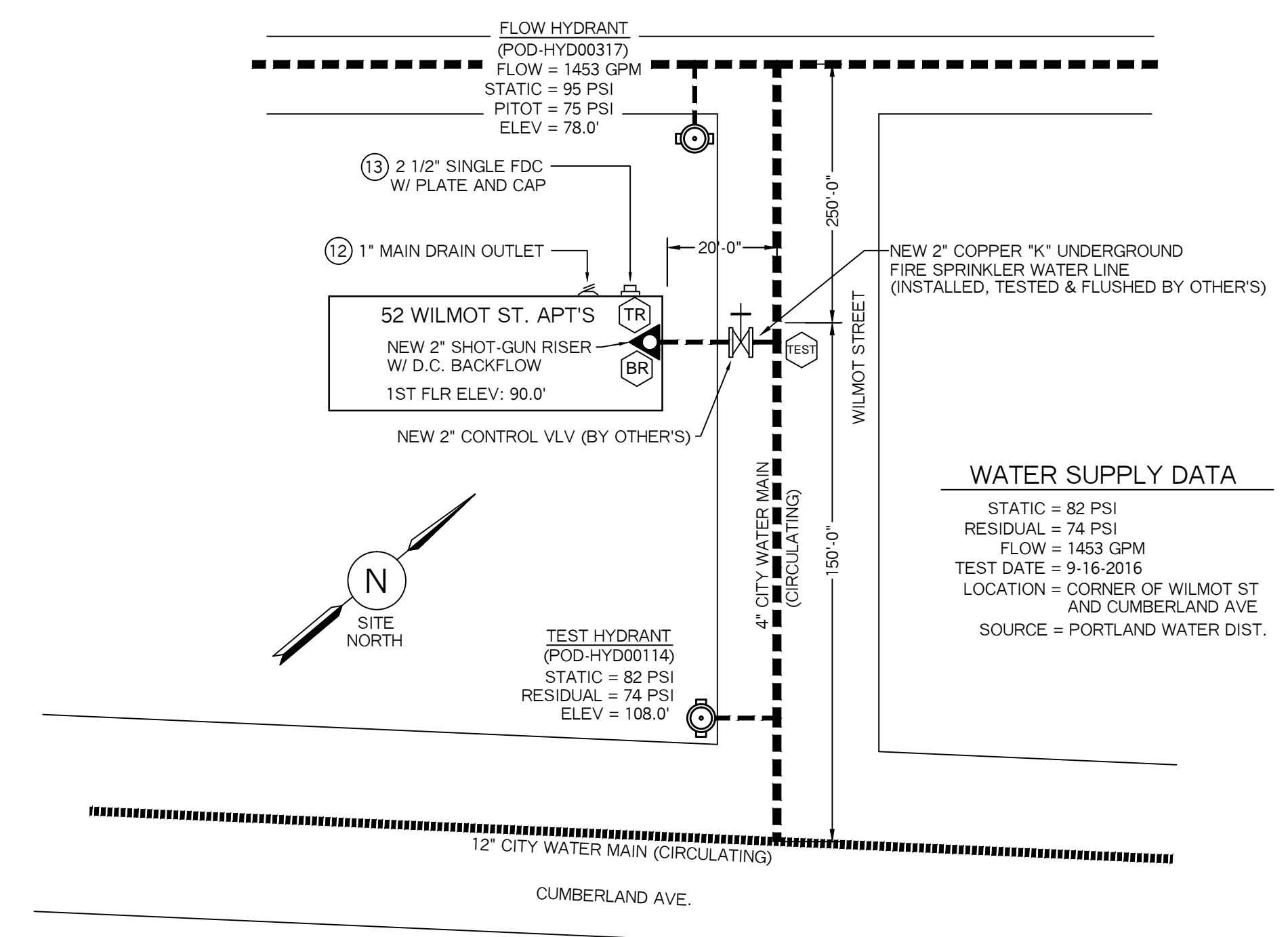
HYDRAULIC CALCULATION INFORMATION	
LOCATION: LOFT (AREA #1)	
BASIS OF DESIGN: NFPA 13, 2016 EDITION	
DENSITY	AREA OF COVERAGE
.0508	2 SPRK'S
OCCUPANCY: BEDROOM	
SPRINKLERS:	TOTAL THRD ORIFICE TEMP
2	1/2" 7/16" 155
SYSTEM DEMAND AT BASE OF RISER (BOR):	
PRESSURE	FLOW HOSE
41.43 PSI	26.12 GPM 0
SAFETY MARGIN: 51.09 PSI	

HYDRAULIC CALCULATION INFORMATION	
LOCATION: 2ND FLR (AREA #2)	
BASIS OF DESIGN: NFPA 13, 2016 EDITION	
DENSITY	AREA OF COVERAGE
.0508	4 SPRK'S
OCCUPANCY: KITCHEN AREA	
SPRINKLERS:	TOTAL THRD ORIFICE TEMP
4	1/2" 7/16" 155
SYSTEM DEMAND AT BASE OF RISER (BOR):	
PRESSURE	FLOW HOSE
67.85 PSI	57.83 GPM 250
SAFETY MARGIN: 23.71 PSI	

HYDRAULIC CALCULATION INFORMATION	
LOCATION: BASEMENT (AREA #3)	
BASIS OF DESIGN: NFPA 13, 2016 EDITION	
DENSITY	AREA OF COVERAGE
.15	935 SQ FT
OCCUPANCY: MISC. STORAGE	
SPRINKLERS:	TOTAL THRD ORIFICE TEMP
11	1/2" 1/2" 155
SYSTEM DEMAND AT BASE OF RISER (BOR):	
PRESSURE	FLOW HOSE
65.91 PSI	239.93 GPM 250
SAFETY MARGIN: 4.23 PSI	



BUILDING SECTION -AA-
SCALE: 1/8" = 1'-0"



PLOT / SITE PLAN
SCALE: NTS

SYSTEM GENERAL NOTES:

- A WET PIPE SYSTEM OF AUTOMATIC SPRINKLERS DESIGNED AND INSTALLED PER NFPA 13R (2016 EDITION)
- NEW 2" COPPER TYPE K SPRINKLER WATER LINE TO BE INSTALLED, TESTED AND FLUSHED BY OTHER'S IN ACCORDANCE WITH NFPA 24 AND LOCAL CODES. RESIDENTIAL FIRE PROTECTION TO START AT END OF 2" COPPER LINE IN THE BASEMENT.
- 2" SHOT-GUN VALVE RISER WITH A 2 1/2" DOUBLE CHECK BACKFLOW.
- EXPOSED LINE PIPING IN THE BASEMENT TO BE SCHEDULE 40 BLACK STEEL WITH THREADED C.I. FITTINGS AND BRASS UPRIGHT HEADS ON LINE.
- CVPC BLAZEMASTERS PLASTIC PIPE AND FITTINGS TO BE INSTALLED ON THE FIRST AND SECOND FLOORS. ALL CVPC PIPE TO BE CONCEALED FROM VIEW, TO BE INSTALLED IN WALLS AND ABOVE GWB CEILINGS.
- WHITE RESIDENTIAL CONCEALED PENDENT SPRINKLERS WILL BE INSTALLED IN THE CEILINGS AND WHITE RECESSED RESIDENTIAL SIDEWALL HEADS WILL BE INSTALLED ON THE WALLS. RECESSED ESCUTCHEON SHALL BE USED WHERE THERE IS NOT ENOUGH ROOM FOR A CONCEALED PENDENT TO BE USED.

NFPA 13R NOTES:

- SPRINKLERS SHALL BE INSTALLED IN ALL AREA'S EXCEPT THE FOLLOWING:
- 1.) BATHROOM'S WHERE THE AREA DOES NOT EXCEED 55 SF
- 2.) CLOTHES CLOSET'S, LINEN CLOSET'S AND PANTRIES THAT MEET THE FOLLOWING CONDITIONS:
 - THE AREA OF THE SPACE DOES NOT EXCEED 24 SF
 - THE LEAST DIMENSION DOES NOT EXCEED 3'-0"
 - THE WALLS AND CEILINGS ARE SURFACED WITH NON-COMBUSTIBLE OR LIMITED COMBUSTIBLE MATERIALS.
- * SPRINKLERS SHALL BE INSTALLED IN ANY CLOSET USED FOR HEATING OR AIR CONDITIONING EQUIPMENT
- 3.) PORCHES, BALCONIES, CORRIDORS AND STAIRS THAT ARE OPEN AND ATTACHED
- 4.) ATTICS, PENTHOUSES, EQUIPMENT ROOMS, ELEVATOR MACHINE ROOMS, CONCEALED SPACES DEDICATED EXCLUSIVELY TO AND CONTAINING ONLY DWELLING UNIT VENTILATION EQUIPMENT, CRAWL SPACES, FLOOR/CEILING SPACES, NON-COMBUSTIBLE ELEVATOR SHAFTS WITH THE CAR IN COMPLIANCE WITH ANSI A17.1 "SAFETY CODE FOR ELEVATORS" AND OTHER CONCEALED SPACES THAT ARE NOT USED OR INTENDED FOR LIVING PURPOSES OR STORAGE AND DO NOT CONTAIN FUEL FIRED EQUIPMENT
- 5.) CLOSETS ON EXTERIOR BALCONIES, REGARDLESS OF SIZE, AS LONG AS THERE ARE NO DOORS OR UNPROTECTED PENETRATIONS FROM THE CLOSET DIRECTLY INTO THE DWELLING UNIT.

PROJECT NAME:	52 WILMOT ST. APT'S 52 WILMOT STREET PORTLAND, ME. 04101	FIRE SPRINKLER PLANS AND DETAILS	RESIDENTIAL FIRE
CONTRACT WITH:	CRANDALL TOOTHAKER (OWNER) PH: (207) 797-6066	REQUIRED APPROVALS: STATE FIRE MARSHALS OFFICE LOCAL FIRE DEPARTMENT OWNER	PROTECTION, LLC
DRAWN BY: TPP NICET III CERTIFICATION # 100854		CHECKED BY: SJC NICET III (100854) CERTIFICATION # 78065	DATE: 6-28-2017
RESIDENTIAL FIRE PROTECTION 64 DAGGETT HILL ROAD, GREENE, MAINE 04236 PH: (207) 946-3473 FAX: (207) 946-3474		CONTRACTOR LICENSE #511 CONTRACTOR RMS #80	SCALE: 1/8" = 1'-0" CONTRACT NO. C16032 DRAWING NO. 1 OF 1