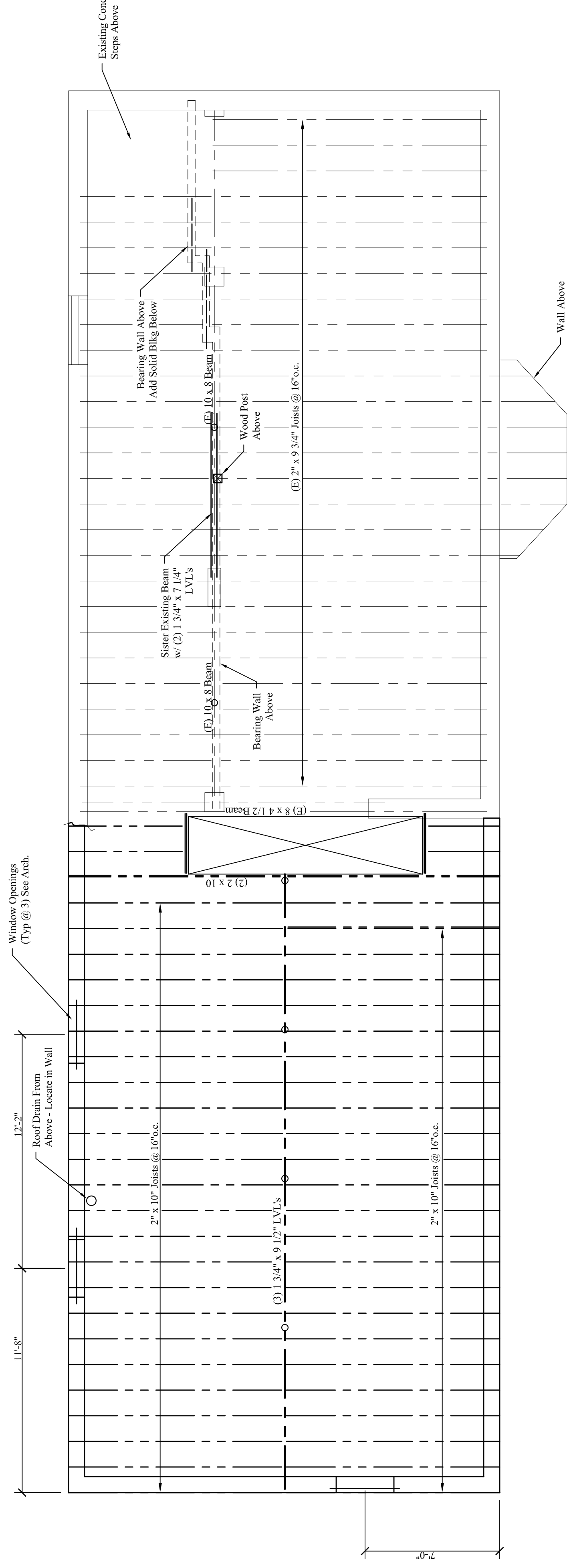


- FOUNDATION NOTES:**
- See General Structural Notes on Sheet S-1.
  - Verify all wall heights and dimensions with architectural drawings prior to construction.
  - Stem footing in field to obtain minimum frost depth. See detail 5/S1.
  - Save cut concrete floor slabs at 12"-0" maximum on center. See plan for layout and detail 6/S1 for size.

**FOUNDATION PLAN**

Scale: 1/4" = 1'-0"



**1st FLOOR FRAMING PLAN**

Scale: 1/4" = 1'-0"

- FLOOR FRAMING NOTES:**
- See Structural Notes, Sheet S-1.
  - Build-up girders, headers and beams shall be spiked w/ 3 rows of 16d nails @ 12" o.c.
  - Provide metal hangers at all flush joist connections.
  - Provide double joists below all upper parallel walls.
  - Provide solid blocking at mid-span of floor joists.
  - Block joists in field with 2" x 10" joists @ 16" o.c.
  - Block joists @ 16" x 96" x 16" in field and insulation between over all exterior door and window openings unless noted on plan.
  - Leave 3/8" gap between top of all beams/girders and bottom of floor sheathing for expansion and contraction.
  - Add solid blocking between floor joists below all posts.