

NOTES:
 1. ALL DIMENSIONS ARE FOR REFERENCE ONLY. ALL DIMENSIONS SHALL BE FIELD VERIFIED BEFORE ORDERING SUPPLIES OR BEGINNING CONSTRUCTION.

NOTE: WINDOW SUPPLIER SHALL PROVIDE IRM PACKAGE AND ADJUST MILLED UNITS ROUGH OPENINGS AS REQUIRED.
 NOTE: ** CONTRACTOR SHALL VERIFY ROUGH OPENINGS BEFORE FRAMING OPENINGS
 NOTE: SEE ELEVATIONS FOR GRILLE PATTERNS, ORDER ACCORDINGLY.

DOOR SCHEDULE						
NO.	SIZE (WxH) (E)-EXISTING	INSUL	FIRE RATING	HARDWARE	SWING	REMARKS
100	5'-0" x 6'-8"	R-7	1HR	HW-5	SEE PLAN	* DOOR/FRAME ASSEMBLY, SELF CLOSING, PANEL
101	5'-0" x 6'-2"	R-7	1HR	HW-5	SEE PLAN	* DOOR/FRAME ASSEMBLY, SELF CLOSING, PANEL
102	5'-0" x 6'-2"	R-7	1HR	HW-5	SEE PLAN	* DOOR/FRAME ASSEMBLY, SELF CLOSING, PANEL
103	5'-0" x 6'-8"	R-7	1HR	HW-1	SEE PLAN	* DOOR/FRAME ASSEMBLY, SELF CLOSING, FULL VIEW
104	5'-0" x 6'-8"	R-7	1HR	HW-5	SEE PLAN	* DOOR/FRAME ASSEMBLY, SELF CLOSING, 9 LITE
105	5'-0" x 6'-8"	R-7	1HR	HW-5	SEE PLAN	* DOOR/FRAME ASSEMBLY, SELF CLOSING, FULL VIEW
106	5'-0" x 6'-8"	R-7	1HR	HW-4	SEE PLAN	* DOOR/FRAME ASSEMBLY, SELF CLOSING, PANEL
107	5'-0" x 6'-8"	R-7	1HR	HW-2	SEE PLAN	* DOOR/FRAME ASSEMBLY, SELF CLOSING, PANEL (REPLACE EXISTING DOOR)
108	5'-0" x 6'-8"	R-7	1HR	HW-1	SEE PLAN	* DOOR/FRAME ASSEMBLY, SELF CLOSING, FULL VIEW

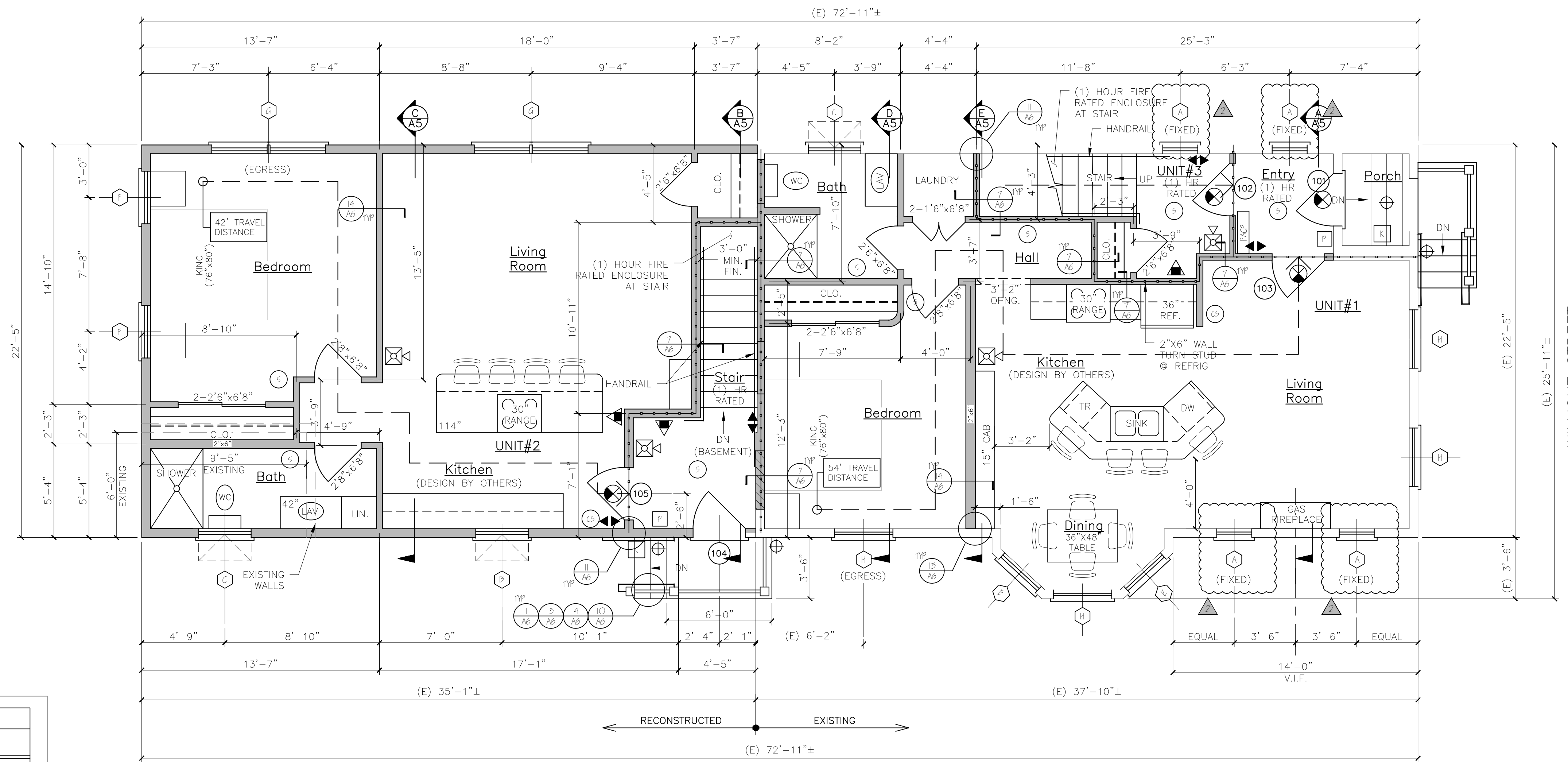
NOTE: SEE FLOOR PLANS FOR UNIT INTERIOR DOOR SIZES, SWING AND TYPE. REPLACE EXISTING DOORS & FRAMES NOTED IN DOOR SCHEDULE AS REQUIRED.

HW-1	3 BUTTS * DOOR ENTRY LEVER LOCKSET; THRESHOLD WEATHER STRIPPING, DOOR BOTTOM	* GC OPTION: SELF CLOSING BUTTS OR DOOR CLOSERS
HW-2	3 BUTTS * DOOR ENTRY LEVER LOCKSET; THRESHOLD WEATHER STRIPPING, DOOR BOTTOM, DOOR VIEWER	* GC OPTION: SELF CLOSING BUTTS OR DOOR CLOSERS
HW-5	3 BUTTS * DOOR, ENTRY LEVER LOCKSET; THRESHOLD WEATHER STRIPPING, DOOR BOTTOM	* GC OPTION: SELF CLOSING BUTTS OR DOOR CLOSERS
HW-4	3 BUTTS * DOOR, ENTRY LEVER LOCKSET;	* GC OPTION: SELF CLOSING BUTTS OR DOOR CLOSERS
HW-9	3 BUTTS * DOOR, STORE ROOM LEVER LOCKSET W/ EXIT FUNCTION	* GC OPTION: SELF CLOSING BUTTS OR DOOR CLOSERS
INTERNAL UNIT DOORS	3 BUTTS; LEVER LATCH SET; EXCEPT PRIVACY SET AT BATHROOMS	* GC OPTION: SELF CLOSING BUTTS OR DOOR CLOSERS

WINDOW SCHEDULE						
NO.	SIZE (WxH)	TYPE	FIRE RATING	GLAZING	ROUGH OPENING (WxH)	REMARKS
1	MRAHW2020P	AWNING (FIXED)	NONE	TEMPERED, INSUL. GL.	2'-11/4" x 2'-0 3/4"	PLYGEM
2	MRAHW5090	AWNING	NONE	INSUL. GL.	5'-11 5/8" x 0'-11/2"	PLYGEM
3	MRAHW5090	AWNING	NONE	TEMPERED, INSUL. GL. PROTECTED	5'-11 5/8" x 0'-11/2"	PLYGEM
4	MRAHW0910P	PICTURE	NONE	TEMPERED, INSUL. GL.	6'-2 3/8" x 8'-11/4"	PLYGEM
5	MRAW28910	DOUBLE-HUNG	NONE	TEMPERED, INSUL. GL.	2'-10 1/2" x 4'-3 1/2"	PLYGEM
6	MRAW28910	DOUBLE-HUNG	NONE	TEMPERED, INSUL. GL.	5'-2 3/8" x 8'-11/4"	PLYGEM (EGRESS)
7	MRAW28910-2	DOUBLE-HUNG	NONE	TEMPERED, INSUL. GL.	6'-4 3/4" x 8'-11/4"	PLYGEM (EGRESS)
8	MRAW4910	DOUBLE-HUNG	NONE	TEMPERED, INSUL. GL.	5'-6 3/8" x 11'-8"	PLYGEM (EGRESS)
9	MRAW2424	AWNING	NONE	TEMPERED, INSUL. GL. PROTECTED	2'-9 1/2" x 2'-4 3/4"	PLYGEM
10	CUSTOM-FIELD VERIFY	HALF ROUND	NONE	TEMPERED, INSUL. GL. (FIELD VERIFY)		PLYGEM (EGRESS)
11	MRAHW5090-2	AWNING	NONE	TEMPERED, INSUL. GL.	6'-2 3/8" x 0'-11/2"	PLYGEM
12	MRAHW5090-5	AWNING	NONE	TEMPERED, INSUL. GL.	9'-2 3/8" x 0'-11/2"	PLYGEM
13	MRAW2424-2	AWNING	NONE	TEMPERED, INSUL. GL.	2'-8 3/4" x 2'-11/4"	PLYGEM
14	MRAHW5090P	AWNING (FIXED)	NONE	TEMPERED, INSUL. GL.	5'-11 5/8" x 0'-11/2"	PLYGEM
15	CUSTOM	FIXED	NONE	INSUL. GL.	TEMPERED	PLYGEM

NOTE: VERIFY ALL WINDOW AND DOOR SIZES AND TYPES WITH OWNER BEFORE ORDERING.
 NOTE: SEE STRUCTURAL HEADER SCHEDULE FOR HEADER SIZE

WINDOW & DOOR SCHEDULE & HARDWARE SETS



FIRST FLOOR PLAN

NFPA LEGEND	
	EXIT LIGHT
	FIRE EXTINGUISHER
	FIRE ALARM PANEL-LOCATE PER ANJ
	EMERGENCY LIGHT
	SMOKE DETECTOR W/ SOUNDER BASE & STROBE (INTERCONNECTED)
	COMBINATION CARBON MONOXIDE / SMOKE DETECTOR W/ SOUNDER BASE & STROBE (INTERCONNECTED)
	KNOCK BOX-LOCATE PER ANJ
	1 HR RATED PARTITION
	1 HR RATED SEPARATION PARTITION
	EGRESS LIGHT
	FIRE ALARM HORN STROBE UNIT
	FIRE ALARM PULL MANUAL PULL STATION

LIFE SAFETY NOTES	
1.	THE BUILDING SHALL HAVE AN NFPA 13R FIRE SUPPRESSION SPRINKLER SYSTEM INSTALLED. SPRINKLER SYSTEM SHALL BE INSTALLED BY A CERTIFIED SPRINKLER CONTRACTOR AND SHALL BE REVIEWED AND APPROVED BY THE STATE OF MAINE FIRE MARSHAL, AS WELL AS THE LOCAL AUTHORITY HAVING JURISDICTION. THE CONTRACTOR SHALL BEAR SOLE RESPONSIBILITY FOR THE DESIGN AND INSTALLATION OF THE SYSTEM FOR OCCUPANCY.
2.	THE BUILDING SHALL HAVE A FIRE ALARM SYSTEM AS REQUIRED FOR COMPLIANCE WITH NFPA 101 LIFE SAFETY CODE. COORDINATE WITH SPRINKLER SYSTEM. VERIFY LOCATION OF ALARM AND NOTIFICATION PANELS WITH THE AUTHORITY HAVING JURISDICTION.
3.	ALL ALARMS AND DETECTORS SHALL BE INTERCONNECTED.
4.	REFER TO THE WINDOW SCHEDULE FOR EGRESS WINDOWS.

GENERAL NOTES	
1.	ALL HORIZONTAL UNIT SEPARATIONS (FLOOR/CEILING/ROOF) ASSEMBLIES SHALL BE THE FIRE RATED / 50. SEE
2.	ALL VERTICAL UNIT SEPARATIONS (PARTIAL WALLS) SHALL BE THE FIRE RATED / 50. SEE
3.	ALL STAIR ENCLOSURES SHALL BE 1 HR FIRE RATED. SEE
4.	SEE SHEET A6 FOR HANDRAIL DETAILS
5.	SEE FOR FIRE RATING AT UNDERSIDE OF STAIR RUNS.

LEGEND	
SYMBOL	DESCRIPTION
	NEW WALL
	NEW WALL/EXISTING WALL W/INFILL
	EXISTING WALL
	THIN LINEWEIGHT DENOTES EXISTING CONDITIONS
	HEAVY LINEWEIGHT DENOTES NEW CONDITIONS
	DEMOLISHED OR REMOVED STRUCTURE OR EQUIPMENT

STRUCTURAL HEADER SCHEDULE

LVL's
 5' wide openings - Use (2) 1 3/4" x 9 1/2" LVL's.
 4' wide openings - Use (2) 1 3/4" x 9 1/2" LVL's.
 3' or less openings - Use (3) 2 x 10's.

Second Floor Level:
 5' wide openings - Use (2) 1 3/4" x 9 1/2" LVL's.
 4' wide openings - Use (3) 2 x 10's.
 3' or less openings - Use (2) 2 x 10's.

Third Floor Level:
 5' and less openings - Use (2) 2 x 10's.

REVISION 2 REVISED FLOOR PLANS 08-07-2017

Engineering Review of Structural Framing System Only.

ENGINEERING DESIGN PROFESSIONALS
 PO Box 575
 Freeport, Maine 04032
 207-865-9505

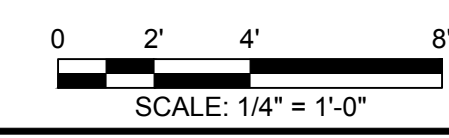
LARRY A. WICHROSKI
 No. 5990
 LICENSED PROFESSIONAL ENGINEER

52 WILMOT STREET
 MORIN DRAFTING 318-1177
 52 WILMOT STREET, L.L.C.
 477 CONGRESS STREET PORTLAND, MAINE

FIRST FLOOR PLAN

DRAWN: J. MORIN
 SCALE: 1/4"=1'-0"
 DATE: 07-06-2016
 PLAN NO:

ISSUED FOR CONSTRUCTION
 03-17-17



A3