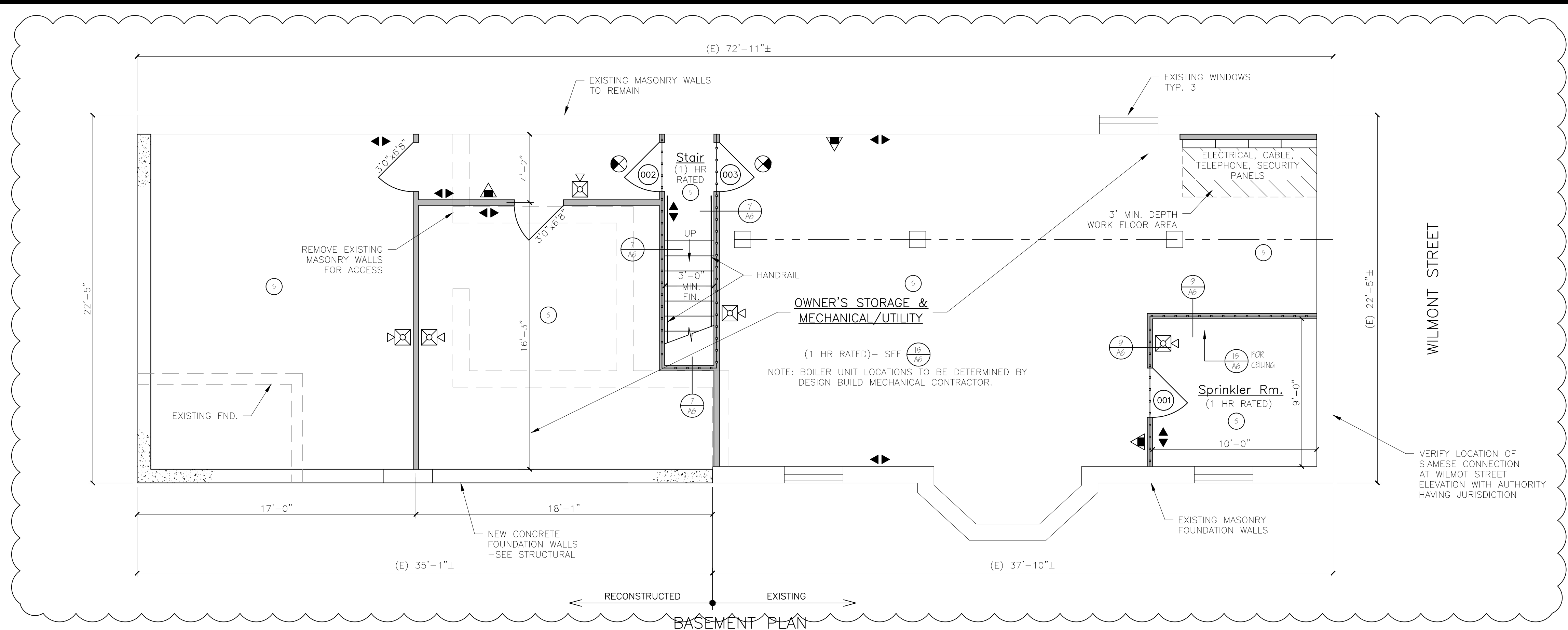


NOTES:

1. ALL DIMENSIONS ARE FOR REFERENCE ONLY. ALL DIMENSIONS SHALL BE FIELD VERIFIED BEFORE ORDERING SUPPLIES OR BEGINNING CONSTRUCTION.



NOTE: FIRE RATED SEPARATION AT CEILING/FLOOR ASSEMBLY REQUIRED PER NFPA (MECH/UTILITY/STORAGE OVER 100 SF) & IBC (STORAGE/MECHANICAL/UTILITY)

NOTE: WINDOW SUPPLIER SHALL PROVIDE TRIM PACKAGE AND ADJUST MILLED UNITS TO MATCH OPENINGS AS REQUIRED.
 NOTE: ** CONTRACTOR SHALL VERIFY ROUGH OPENINGS BEFORE FRAMING OPENINGS
 NOTE: SEE ELEVATIONS FOR GRILLE PATTERNS, ORDER ACCORDINGLY.

DOOR SCHEDULE						
NO.	SIZE (WxH) (E) - EXISTING	INSUL.	FIRE RATING	HARDWARE	SWING	REMARKS
001	5'-0" x 6'-8"	R-7	1 HR	HW-5	SEE PLAN	* DOOR/ FRAME ASSEMBLY, SELF CLOSING, PANEL
002	5'-0" x 6'-2"	R-7	1 HR	HW-5	SEE PLAN	* DOOR/ FRAME ASSEMBLY, SELF CLOSING, PANEL
003	5'-0" x 6'-2"	R-7	1 HR	HW-5	SEE PLAN	* DOOR/ FRAME ASSEMBLY, SELF CLOSING, PANEL
004	5'-0" x 6'-8"	R-7	1 HR	HW-1	SEE PLAN	* DOOR/ FRAME ASSEMBLY, SELF CLOSING, FULL VIEW
005	5'-0" x 6'-8"	R-7	1 HR	HW-5	SEE PLAN	* DOOR/ FRAME ASSEMBLY, SELF CLOSING, 9 LITE
006	5'-0" x 6'-8"	R-7	1 HR	HW-5	SEE PLAN	* DOOR/ FRAME ASSEMBLY, SELF CLOSING, FULL VIEW
007	5'-0" x 6'-8"	R-7	1 HR	HW-4	SEE PLAN	* DOOR/ FRAME ASSEMBLY, SELF CLOSING, PANEL
008	5'-0" x 6'-8"	R-7	1 HR	HW-2	SEE PLAN	* DOOR/ FRAME ASSEMBLY, SELF CLOSING, PANEL (REPLACE EXISTING DOOR)
009	5'-0" x 6'-8"	R-7	NONE	HW-1	SEE PLAN	* DOOR/ FRAME ASSEMBLY, SELF CLOSING, FULL VIEW

NOTE: SEE FLOOR PLANS FOR UNIT INTERIOR DOOR SIZES, SWING AND TYPE.
 REPLACE EXISTING DOORS & FRAMES NOTED IN DOOR SCHEDULE AS REQUIRED.

HW-1	5 BUTTS*, DOOR ENTRY LEVER LOCKSET; THRESHOLD WEATHER STRIPPING, DOOR BOTTOM	* GC OPTION: SELF CLOSING BUTTS OR DOOR CLOSERS
HW-2	5 BUTTS*, DOOR ENTRY LEVER LOCKSET; THRESHOLD WEATHER STRIPPING, DOOR BOTTOM, DOOR VIEWER	* GC OPTION: SELF CLOSING BUTTS OR DOOR CLOSERS
HW-5	5 BUTTS*, DOOR ENTRY LEVER LOCKSET; THRESHOLD WEATHER STRIPPING, DOOR BOTTOM	* GC OPTION: SELF CLOSING BUTTS OR DOOR CLOSERS
HW-4	5 BUTTS*, DOOR ENTRY LEVER LOCKSET	* GC OPTION: SELF CLOSING BUTTS OR DOOR CLOSERS
HW-9	5 BUTTS*, DOOR, STORE ROOM LEVER LOCKSET W/ EXIT FUNCTION	* GC OPTION: SELF CLOSING BUTTS OR DOOR CLOSERS
INTERNAL UNIT DOORS	5 BUTTS; LEVER LATCH SET, EXCEPT PRIVACY SET AT BATHROOMS	* GC OPTION: SELF CLOSING BUTTS OR DOOR CLOSERS

WINDOW SCHEDULE						
NO.	SIZE (WxH)	TYPE	FIRE RATING	GLAZING	ROUGH OPENING (WxH)	REMARKS
A	MR4W20Z0P	AWNING (FIXED)	NONE	TEMPERED, INSUL. GL.	2'-1 1/4" x 2'-0 5/4"	PLYGEM
B	MR4W90P0	AWNING	NONE	INSUL. GL.	9'-11 3/4" x 0-11 2"	PLYGEM
C	MR4W90S0	AWNING	NONE	TEMPERED, INSUL. GL. PROSLED GL.	9'-11 3/4" x 0-11 2"	PLYGEM
D	MR4W60S10P	PICTURE	NONE	TEMPERED, INSUL. GL.	6'-2 5/8" x 6'-1 1/4"	PLYGEM
E	MR4W28S10	DOUBLE HUNG	NONE	TEMPERED, INSUL. GL.	2'-10 5/8" x 4'-11 8/8"	PLYGEM
F	MR4W90S10H	DOUBLE HUNG	NONE	TEMPERED, INSUL. GL.	9'-2 5/8" x 6'-11 8/8"	PLYGEM (EGRESS)
G	MR4W90S10O-2	DOUBLE HUNG	NONE	TEMPERED, INSUL. GL.	6'-4 5/8" x 4'-11 8/8"	PLYGEM (EGRESS)
H	MR4W94S10	DOUBLE HUNG	NONE	TEMPERED, INSUL. GL.	9'-6 5/8" x 6'-11 8/8"	PLYGEM (EGRESS)
I	MR4W94S10	AWNING	NONE	TEMPERED, INSUL. GL. PROSLED GL.	9'-6 5/8" x 4'-11 8/8"	PLYGEM
J	MR4W90S10-2	AWNING	NONE	TEMPERED, INSUL. GL.	6'-2 5/8" x 0-11 2"	PLYGEM
K	MR4W90S10-3	AWNING	NONE	TEMPERED, INSUL. GL.	9'-2 5/8" x 0-11 2"	PLYGEM
L	MR4W94S10-3	AWNING	NONE	TEMPERED, INSUL. GL.	9'-6 5/8" x 4'-11 8/8"	PLYGEM
M	MR4W90S10P	AWNING (FIXED)	NONE	TEMPERED, INSUL. GL.	9'-11 3/4" x 0-11 2"	PLYGEM
N	MR4W90S10P	AWNING (FIXED)	NONE	TEMPERED, INSUL. GL.	9'-11 3/4" x 0-11 2"	PLYGEM
O	MR4W90S10P	AWNING (FIXED)	NONE	TEMPERED, INSUL. GL.	9'-11 3/4" x 0-11 2"	PLYGEM
P	MR4W90S10P	AWNING (FIXED)	NONE	TEMPERED, INSUL. GL.	9'-11 3/4" x 0-11 2"	PLYGEM
Q	MR4W90S10P	AWNING (FIXED)	NONE	TEMPERED, INSUL. GL.	9'-11 3/4" x 0-11 2"	PLYGEM
R	MR4W90S10P	AWNING (FIXED)	NONE	TEMPERED, INSUL. GL.	9'-11 3/4" x 0-11 2"	PLYGEM
S	MR4W90S10P	AWNING (FIXED)	NONE	TEMPERED, INSUL. GL.	9'-11 3/4" x 0-11 2"	PLYGEM
T	MR4W90S10P	AWNING (FIXED)	NONE	TEMPERED, INSUL. GL.	9'-11 3/4" x 0-11 2"	PLYGEM
U	MR4W90S10P	AWNING (FIXED)	NONE	TEMPERED, INSUL. GL.	9'-11 3/4" x 0-11 2"	PLYGEM
V	MR4W90S10P	AWNING (FIXED)	NONE	TEMPERED, INSUL. GL.	9'-11 3/4" x 0-11 2"	PLYGEM
W	MR4W90S10P	AWNING (FIXED)	NONE	TEMPERED, INSUL. GL.	9'-11 3/4" x 0-11 2"	PLYGEM
X	MR4W90S10P	AWNING (FIXED)	NONE	TEMPERED, INSUL. GL.	9'-11 3/4" x 0-11 2"	PLYGEM
Y	MR4W90S10P	AWNING (FIXED)	NONE	TEMPERED, INSUL. GL.	9'-11 3/4" x 0-11 2"	PLYGEM
Z	MR4W90S10P	AWNING (FIXED)	NONE	TEMPERED, INSUL. GL.	9'-11 3/4" x 0-11 2"	PLYGEM

NOTE: VERIFY ALL WINDOW AND DOOR SIZES AND SHIES WITH OWNER BEFORE ORDERING.
 NOTE: SEE STRUCTURAL HEADER SCHEDULE FOR HEADER SIZE.

WINDOW & DOOR SCHEDULE & HARDWARE SETS

NFPA LEGEND	
	EXIT LIGHT
	FIRE EXTINGUISHER
	FIRE ALARM PANEL-LOCATE PER AHJ
	EMERGENCY LIGHT
	SMOKE DETECTOR W/ SOUNDER BASE & STROBE (INTERCONNECTED)
	COMBINATION CARBON MONOXIDE / SMOKE DETECTOR W/ SOUNDER BASE & STROBE (INTERCONNECTED)
	KNOCK BOX-LOCATE PER AHJ
	1HR RATED PARTITION
	1HR RATED SEPARATION PARTITION
	EGRESS LIGHT
	FIRE ALARM HORN STROBE UNIT
	FIRE ALARM PULL MANUAL PULL STATION

LIFE SAFETY NOTES

- THE BUILDING SHALL HAVE AN NFPA 13B FIRE SUPPRESSION SPRINKLER SYSTEM INSTALLED. SPRINKLER SYSTEM SHALL BE INSTALLED BY A CERTIFIED SPRINKLER CONTRACTOR AND SHALL BE REVIEWED AND APPROVED BY THE STATE OF MAINE FIRE MARSHAL AS WELL AS THE LOCAL AUTHORITY HAVING JURISDICTION. THE CONTRACTOR SHALL BEAR SOLE RESPONSIBILITY FOR THE DESIGN AND INSTALLATION OF THE SYSTEM FOR OCCUPANCY.
- THE BUILDING SHALL HAVE A FIRE ALARM SYSTEM AS REQUIRED FOR COMPLIANCE WITH NFPA 101 LIFE SAFETY CODE. COORDINATE WITH SPRINKLER SYSTEM. VERIFY LOCATION OF ALARM AND NOTIFICATION PANELS WITH THE AUTHORITY HAVING JURISDICTION.
- ALL ALARMS AND DETECTORS SHALL BE INTERCONNECTED.
- REFER TO THE WINDOW SCHEDULE FOR EGRESS WINDOWS.

GENERAL NOTES

- ALL HORIZONTAL UNIT SEPARATIONS (FLOOR/CEILING/ROOF) ASSEMBLIES SHALL BE 1HR FIRE RATED/ STC 60.
 -SEE (8/AG), (9/AG), (12/AG), (13/AG), (14/AG), (15/AG), (16/AG), (17/AG), (18/AG), (19/AG)
- ALL VERTICAL UNIT SEPARATIONS (PARTIAL WALLS) SHALL BE 1HR FIRE RATED/ STC 60.
 -SEE (7/AG)
- ALL STAIR ENCLOSURES SHALL BE 1HR FIRE RATED.
 -SEE (7/AG)
- SEE SHEET A6 FOR HANDRAIL DETAILS
- SEE (10/AG) FOR FIRE RATING AT UNDERSIDE OF STAIR RUNS.

STRUCTURAL HEADER SCHEDULE

LVL's
 5' wide openings - Use (2) 1 3/4" x 9 1/2" LVL's.
 4' wide openings - Use (2) 1 3/4" x 9 1/2" LVL's.
 3' or less openings - Use (3) 2 x 10's.

Second Floor Level:
 5' wide openings - Use (2) 1 3/4" x 9 1/2" LVL's.
 4' wide openings - Use (3) 2 x 10's.
 3' or less openings - Use (2) 2 x 10's.

Third Floor Level:
 5' and less openings - Use (2) 2 x 10's.

LEGEND	
SYMBOL	DESCRIPTION
	NEW WALL
	NEW WALL/EXISTING WALL W/INFILL
	EXISTING WALL
	THIN LINEWEIGHT DENOTES EXISTING CONDITIONS
	HEAVY LINEWEIGHT DENOTES NEW CONDITIONS
	DEMOLISHED OR REMOVED STRUCTURE OR EQUIPMENT

REVISION 2 REVISED FLOOR PLANS 09-07-2017

Engineering Review of Structural Framing System Only.

ENGINEERING DESIGN PROFESSIONALS
 PO Box 575
 Freeport, Maine 04032
 207-865-9505

LARRY A. WICHROSKI
 No. 5990
 LICENSED PROFESSIONAL ENGINEER

52 WILMOT STREET

MORIN DRAFTING 318-1177

52 WILMOT STREET, L.L.C.
 477 CONGRESS STREET PORTLAND, MAINE

FIRST FLOOR PLAN

DRAWN: J. MORIN
 SCALE: 1/4"=1'-0"
 DATE: 07-06-2016
 PLAN NO:

A2

ISSUED FOR CONSTRUCTION
 03-17-17

