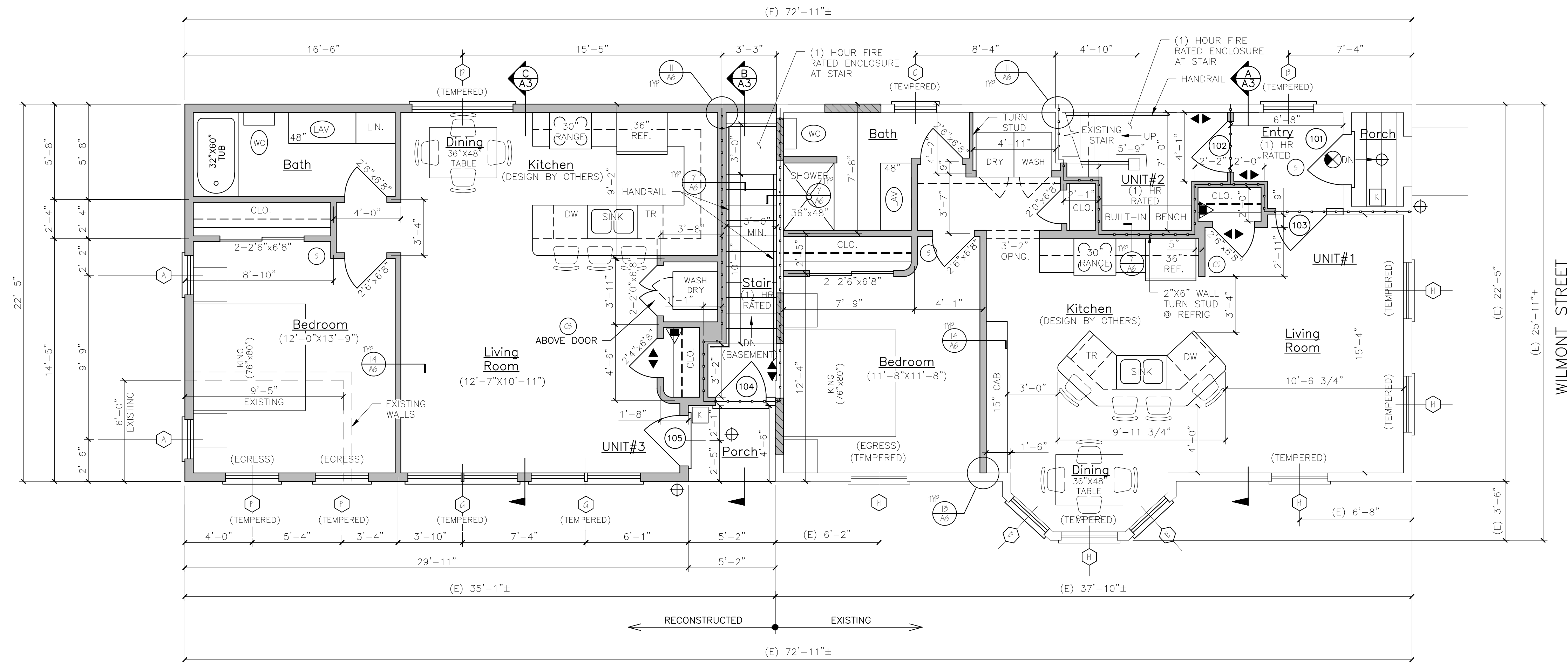


NOTES:

1. ALL DIMENSIONS ARE FOR REFERENCE ONLY. ALL DIMENSIONS SHALL BE FIELD VERIFIED BEFORE ORDERING SUPPLIES OR BEING CONSTRUCTION.



FIRST FLOOR PLAN

DOOR SCHEDULE						
NO.	SIZE (WxH) (E) - EXISTING	INSUL	FIRE RATING	HARDWARE	SWING	REMARKS
01	5'-0" x 6'-8"	R-7	1 HR	HW-5	SEE PLAN	* DOOR/ FRAME ASSEMBLY, SELF CLOSING, PANEL
02	5'-0" x 6'-8"	R-7	1 HR	HW-1	SEE PLAN	* DOOR/ FRAME ASSEMBLY, SELF CLOSING, FULL VIEW
03	5'-0" x 6'-8"	R-7	1 HR	HW-5	SEE PLAN	* DOOR/ FRAME ASSEMBLY, SELF CLOSING, 9 LITE
04	5'-0" x 6'-8"	R-7	1 HR	HW-5	SEE PLAN	* DOOR/ FRAME ASSEMBLY, SELF CLOSING, FULL VIEW
05	5'-0" x 6'-8"	R-7	1 HR	HW-4	SEE PLAN	* DOOR/ FRAME ASSEMBLY, SELF CLOSING, PANEL
06	5'-0" x 6'-8"	R-7	1 HR	HW-2	SEE PLAN	* DOOR/ FRAME ASSEMBLY, SELF CLOSING, PANEL (REPLACE EXISTING DOOR)

NOTE: SEE FLOOR PLANS FOR UNIT INTERIOR DOOR SIZES, SWING AND TYPE.  
REPLACE EXISTING DOORS & FRAMES NOTED IN DOOR SCHEDULE AS REQUIRED.

HW-1	3 BUTTS*, DOOR ENTRY LEVER LOCKSET, THRESHOLD WEATHER STRIPPING, DOOR BOTTOM	* GC OPTION: SELF CLOSING BUTTS OR DOOR CLOSERS
HW-2	3 BUTTS*, DOOR ENTRY LEVER LOCKSET, THRESHOLD WEATHER STRIPPING, DOOR BOTTOM, DOOR VIEWER	* GC OPTION: SELF CLOSING BUTTS OR DOOR CLOSERS
HW-3	3 BUTTS*, DOOR ENTRY LEVER LOCKSET, THRESHOLD WEATHER STRIPPING, DOOR BOTTOM	* GC OPTION: SELF CLOSING BUTTS OR DOOR CLOSERS
HW-4	3 BUTTS*, DOOR ENTRY LEVER LOCKSET	* GC OPTION: SELF CLOSING BUTTS OR DOOR CLOSERS
HW-5	3 BUTTS*, DOOR, STORE ROOM LEVER LOCKSET W/ EXIT FUNCTION	* GC OPTION: SELF CLOSING BUTTS OR DOOR CLOSERS
INTERNAL UNIT DOORS	3 BUTTS, LEVER LATCH SET, EXCEPT PRIVACY SET AT BATHROOMS	* GC OPTION: SELF CLOSING BUTTS OR DOOR CLOSERS

NFPA LEGEND	
	EXIT LIGHT
	FIRE EXTINGUISHER
	FIRE ALARM PANEL - LOCATE PER A.W.J.
	EMERGENCY LIGHT
	SMOKE DETECTOR W/ SOUNDER BASE & STROBE (INTERCONNECTED)
	COMBINATION CARBON MONOXIDE / SMOKE DETECTOR W/ SOUNDER BASE & STROBE (INTERCONNECTED)
	KNOCK BOX - LOCATE PER A.W.J.
	1 HR RATED PARTITION
	1 HR RATED SEPARATION PARTITION
	EGRESS LIGHT

LIFE SAFETY NOTES	
1.	THE BUILDING SHALL HAVE AN NFPA 13R FIRE SUPPRESSION SPRINKLER SYSTEM INSTALLED. SPRINKLER SYSTEM SHALL BE INSTALLED BY A CERTIFIED SPRINKLER CONTRACTOR AND SHALL BE REVIEWED AND APPROVED BY THE STATE OF MAINE FIRE MARSHAL AS WELL AS THE LOCAL AUTHORITY HAVING JURISDICTION. THE CONTRACTOR SHALL BEAR SOLE RESPONSIBILITY FOR THE DESIGN AND INSTALLATION OF THE SYSTEM FOR OCCUPANCY.
2.	THE BUILDING SHALL HAVE A FIRE ALARM SYSTEM AS REQUIRED FOR COMPLIANCE WITH NFPA 101 LIFE SAFETY CODE. COORDINATE WITH SPRINKLER SYSTEM. VERIFY LOCATION OF ALARM AND NOTIFICATION PANELS WITH THE AUTHORITY HAVING JURISDICTION.
3.	ALL ALARMS AND DETECTORS SHALL BE INTERCONNECTED.
4.	REFER TO THE WINDOW SCHEDULE FOR EGRESS WINDOWS.

GENERAL NOTES	
1.	ALL HORIZONTAL UNIT SEPARATIONS (FLOOR/ CEILING/ ROOF) ASSEMBLIES SHALL BE 1 HR. FIRE RATED/ S/C 5.0. -SEE  &  &
2.	ALL VERTICAL UNIT SEPARATIONS (TENANT WALLS) SHALL BE 1 HR. FIRE RATED/ S/C 5.0. -SEE
3.	ALL STAIR ENCLOSURES SHALL BE 1 HR. FIRE RATED. -SEE
4.	SEE SHEET A6 FOR HANDRAIL DETAILS
5.	SEE  FOR FIRE RATING AT UNDERSIDE OF STAIR RUNS.
6.	SEE  FOR 1 HOUR RATED EXTERIOR WALL.

STRUCTURAL HEADER SCHEDULE

- LVL's**  
 5' wide openings - Use (2) 1 3/4" x 9 1/2" LVL's.  
 4' wide openings - Use (2) 1 3/4" x 9 1/2" LVL's.  
 3' or less openings - Use (3) 2 x 10's.
- Second Floor Level:**  
 5' wide openings - Use (2) 1 3/4" x 9 1/2" LVL's.  
 4' wide openings - Use (3) 2 x 10's.  
 3' or less openings - Use (2) 2 x 10's.
- Third Floor Level:**  
 5' and less openings - Use (2) 2 x 10's.

WINDOW SCHEDULE						
NO.	SIZE (WxH)	TYPE	FIRE RATING	GLAZING	ROUGH OPENING (WxH)	REMARKS
A	AW251	AWNING	NONE	TEMPERED, INSUL. GL.	2'-4 7/8" x 2'-4 7/8"	ANDERSEN OR EQUIV.
B	AW251	AWNING	NONE	TEMPERED, INSUL. GL.	5'-0 1/2" x 2'-5 1/2" x 2'-5 1/2"	ANDERSEN OR EQUIV.
C	TW2456	DOUBLE-HING	NONE	TEMPERED, INSUL. GL.	2'-6 1/8" x 5'-9 1/4"	ANDERSEN OR EQUIV.
D	6'-0" x 6'-0"	PICTURE	NONE	TEMPERED, INSUL. GL.	TRP	ANDERSEN OR EQUIV.
E	CUSTOM-2'-10" x 6'-0" H	DOUBLE-HING	NONE	INSUL. GL.	(FIELD VERIFY)	ANDERSEN OR EQUIV.
F	TW5046	DOUBLE-HING	NONE	TEMPERED, INSUL. GL.	5'-2 1/8" x 4'-9 1/4"	ANDERSEN OR EQUIV. (EGRESS)
G	2-TW5046	DOUBLE-HING	NONE	TEMPERED, INSUL. GL.	6'-5 15/16" x 4'-9 1/4"	ANDERSEN OR EQUIV. (EGRESS)
H	CUSTOM-5'-6" x 6'-0" H	DOUBLE-HING	NONE	TEMPERED, INSUL. GL.	(FIELD VERIFY)	ANDERSEN OR EQUIV. (EGRESS)
I	CUSTOM-5'-6" x 6'-0" H	DOUBLE-HING	NONE	TEMPERED, INSUL. GL.	(FIELD VERIFY)	ANDERSEN OR EQUIV. (EGRESS)
J	CUSTOM-FIELD VERIFY	DOUBLE-HING	NONE	TEMPERED, INSUL. GL.	(FIELD VERIFY)	ANDERSEN OR EQUIV. (EGRESS)

NOTE: VERIFY ALL WINDOW AND DOOR SIZES AND STYLES WITH OWNER BEFORE ORDERING.  
 NOTE: SEE STRUCTURAL HEADER SCHEDULE FOR HEADER SIZE.

LEGEND	
	NEW WALL
	NEW WALL/EXISTING WALL W/INFILL
	EXISTING WALL
	THIN LINEWEIGHT DENOTES EXISTING CONDITIONS
	HEAVY LINEWEIGHT DENOTES NEW CONDITIONS
	DEMOLISHED OR REMOVED STRUCTURE OR EQUIPMENT

WINDOW & DOOR SCHEDULE & HARDWARE SETS

Engineering Review of Structural Framing System Only.

**LARRY A. WICHROSKI**  
 No. 5990  
 LICENSED PROFESSIONAL ENGINEER

ENGINEERING DESIGN PROFESSIONALS  
 PO Box 575  
 Freeport, Maine 04032  
 207-865-9505

52 WILMOT STREET

MORIN DRAFTING 318-1177

52 WILMOT STREET, L.L.C.  
 477 CONGRESS STREET PORTLAND, MAINE

FIRST FLOOR PLAN

DRAWN: J. MORIN  
 SCALE: 1/4" = 1'-0"  
 DATE: 07-06-2016

PLAN NO:



A3