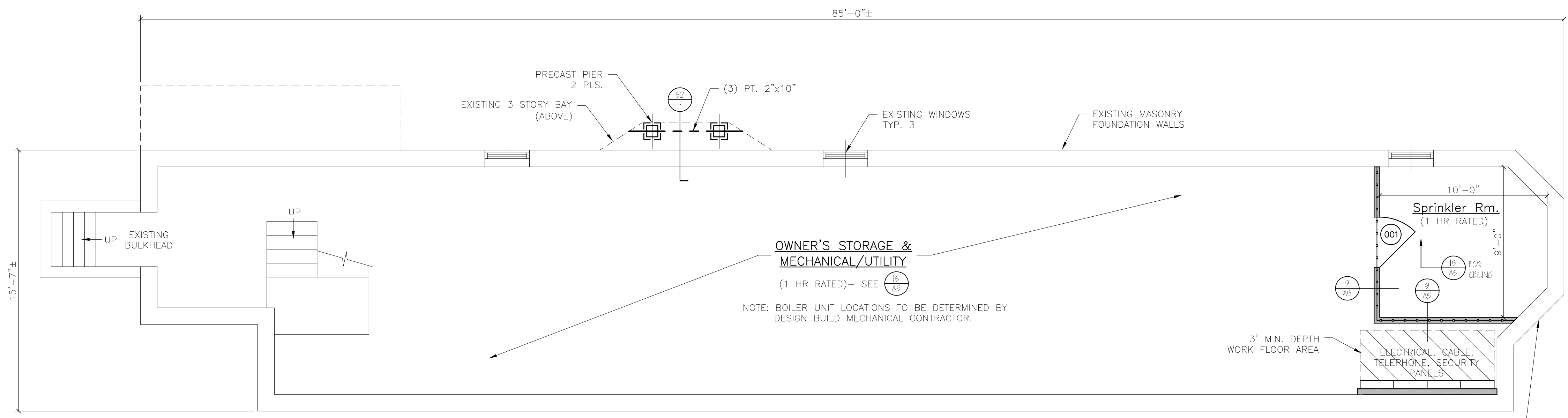


NOTES:

1. ALL DIMENSIONS ARE FOR REFERENCE ONLY. ALL DIMENSIONS SHALL BE FIELD VERIFIED BEFORE ORDERING SUPPLIES OR BEING CONSTRUCTION.

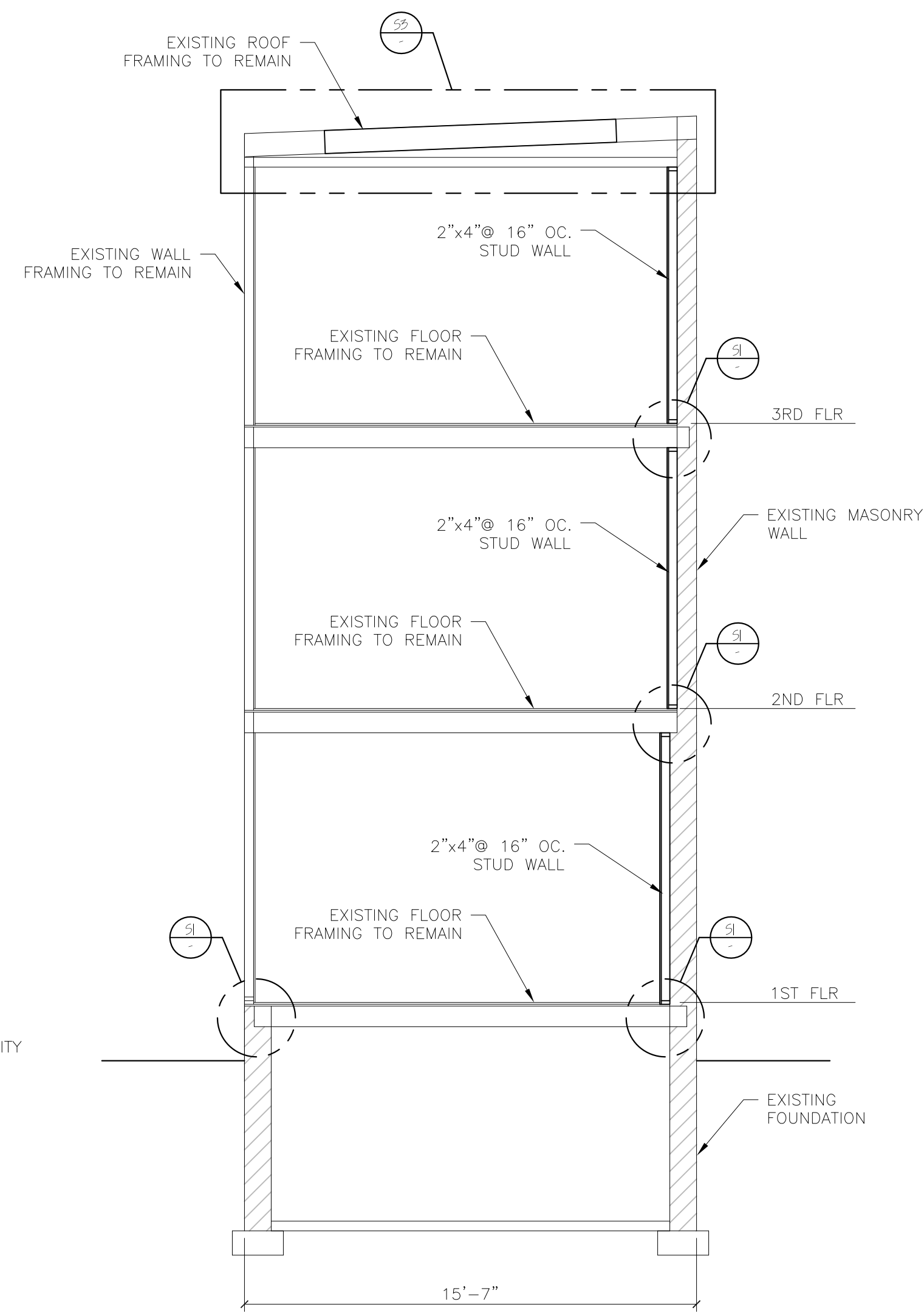


BASEMENT PLAN

NOTE: FIRE RATED SEPARATION AT CEILING/FLOOR ASSEMBLY REQUIRED PER NFPA (MECH/UTILITY/STORAGE OVER 100 SF) & EIBC (STORAGE/MECHANICAL/UTILITY)

WILMONT STREET

VERIFY LOCATION OF SIAMMSE CONNECTION AT WILMOT STREET ELEVATION WITH AUTHORITY HAVING JURISDICTION



TYPICAL BUILDING SECTION

DOOR SCHEDULE						
NO.	SIZE (WxH) (E)=EXISTING	INSUL	FIRE RATING	HARDWARE	SWING	REMARKS
(S1)	3'-0" x 6'-8"	R-7	1 HR	HW-5	SEE PLAN	* DOOR/FRAME ASSEMBLY, SELF CLOSING PANEL
(S2)	2'-8" x 6'-8"	R-7	1 HR	HW-1	SEE PLAN	* DOOR/FRAME ASSEMBLY, SELF CLOSING, FULL VIEW
(S3)	3'-0" x 6'-8"	R-7	1 HR	HW-5	SEE PLAN	* DOOR/FRAME ASSEMBLY, SELF CLOSING, 9 LITE
(S4)	3'-0" x 6'-8"	R-7	1 HR	HW-3	SEE PLAN	* DOOR/FRAME ASSEMBLY, SELF CLOSING, FULL VIEW
(S5)	2'-8" x 6'-8"	R-7	1 HR	HW-4	SEE PLAN	* DOOR/FRAME ASSEMBLY, SELF CLOSING, PANEL
(S6)	3'-0" x 6'-8"	R-7	1 HR	HW-2	SEE PLAN	* DOOR/FRAME ASSEMBLY, SELF CLOSING, PANEL (REPLACE EXISTING DOOR)
(S7)	2'-6" x 6'-8"	R-7	1 HR	HW-3	SEE PLAN	* DOOR/FRAME ASSEMBLY, SELF CLOSING, PANEL
(S8)	2'-8" x 6'-8"	R-7	1 HR	HW-4	SEE PLAN	* DOOR/FRAME ASSEMBLY, SELF CLOSING, PANEL
(S9)	3'-0" x 6'-8"	R-7	1 HR	HW-2	SEE PLAN	* DOOR/FRAME ASSEMBLY, SELF CLOSING
(S10)	2'-6" x 6'-8"	R-7	1 HR	HW-4	SEE PLAN	* DOOR/FRAME ASSEMBLY, SELF CLOSING (REPLACE EXISTING DOOR)
(S11)	2'-8" x 6'-8"	R-7	1 HR	HW-2	SEE PLAN	* DOOR/FRAME ASSEMBLY, SELF CLOSING (REPLACE EXISTING DOOR)

NOTE: SEE FLOOR PLANS FOR UNIT INTERIOR DOOR SIZES, SWING AND TYPE. REPLACE EXISTING DOORS & FRAMES NOTED IN DOOR SCHEDULE AS REQUIRED.

HARDWARE	DESCRIPTION	REMARKS
HW-1	5 BUTTS*, DOOR ENTRY LEVER LOCKSET; THRESHOLD WEATHER STRIPPING; DOOR BOTTOM	* GC OPTION, SELF CLOSING BUTTS OR DOOR CLOSERS
HW-2	5 BUTTS*, DOOR ENTRY LEVER LOCKSET; THRESHOLD WEATHER STRIPPING; DOOR BOTTOM; DOOR VIEWER	* GC OPTION, SELF CLOSING BUTTS OR DOOR CLOSERS
HW-3	5 BUTTS*, DOOR ENTRY LEVER LOCKSET; THRESHOLD WEATHER STRIPPING; DOOR BOTTOM	* GC OPTION, SELF CLOSING BUTTS OR DOOR CLOSERS
HW-4	5 BUTTS*, DOOR ENTRY LEVER LOCKSET	* GC OPTION, SELF CLOSING BUTTS OR DOOR CLOSERS
HW-5	5 BUTTS*, DOOR PASSAGE LEVER LATCH SET W/ EXIT FUNCTION	* GC OPTION, SELF CLOSING BUTTS OR DOOR CLOSERS
INTERNAL UNIT DOORS	5 BUTTS; LATCH SET EXCEPT PRIVACY SET AT BATHROOMS	* GC OPTION, SELF CLOSING BUTTS OR DOOR CLOSERS

WINDOW SCHEDULE						
NO.	SIZE (WxH)	TYPE	FIRE RATING	GLAZING	ROUGH OPENING (WxH)	REMARKS
(A)	1W2052	DOUBLE-HUNG	NONE	TEMP, INSUL, GL	2'-10 1/2" x 6'-5 1/4"	ANDERSEN OR EQUIV. (TEMPERED WINDOW)
(B)	1W2452	DOUBLE-HUNG	NONE	TEMP, INSUL, GL	1' x 6' IN FIELD	ANDERSEN OR EQUIV. (EGRESS & TEMPERED WINDOW)
(C)	1W2052	DOUBLE-HUNG	NONE	TEMP, INSUL, GL	2'-21 1/8" x 6'-5 1/4"	ANDERSEN OR EQUIV. (TEMPERED WINDOW)
(D)	1W2042	DOUBLE-HUNG	NONE	TEMP, INSUL, GL	2'-21 1/8" x 4'-5 1/4"	ANDERSEN OR EQUIV. (TEMPERED WINDOW)
(E)	1W2442	DOUBLE-HUNG	NONE	INSUL, GL	4'-8 1/8" x 16'-4" x 5 1/4"	ANDERSEN OR EQUIV.
(F)	1W2452	DOUBLE-HUNG	NONE	TEMP, INSUL, GL	2'-6 1/2" x 6'-5 1/4"	ANDERSEN OR EQUIV. (TEMPERED WINDOW)
(G)	1W2042	DOUBLE-HUNG	NONE	INSUL, GL	2'-21 1/8" x 4'-11 1/4"	ANDERSEN OR EQUIV.
(H)	1W2052	DOUBLE-HUNG	NONE	TEMP, INSUL, GL	5'-21 1/8" x 6'-5 1/4"	ANDERSEN OR EQUIV. (EGRESS & TEMPERED WINDOW)
(I)	2-W2052	DOUBLE-HUNG	NONE	TEMP, INSUL, GL	6'-3 1/2" x 16'-5" x 5 1/4"	ANDERSEN OR EQUIV. (EGRESS & TEMPERED WINDOW)

NOTE: SEE STRUCTURAL HEADER SCHEDULE FOR HEADER SIZE

NFPA LEGEND	
(Symbol)	EXIT LIGHT
(Symbol)	FIRE EXTINGUISHER
(Symbol)	FIRE ALARM PANEL-LOCATE PER AWJ
(Symbol)	EMERGENCY LIGHT
(Symbol)	SMOKE DETECTOR W/ SOUNDER BASE & SIREN (INTERCONNECTED)
(Symbol)	COMBINATION CARBON MONOXIDE / SMOKE DETECTOR W/ SOUNDER BASE & SIREN (INTERCONNECTED)
(Symbol)	KNOX BOX-LOCATE PER AWJ
(Symbol)	1 HR RATED PARTITION
(Symbol)	1 HR RATED SEPARATION PARTITION

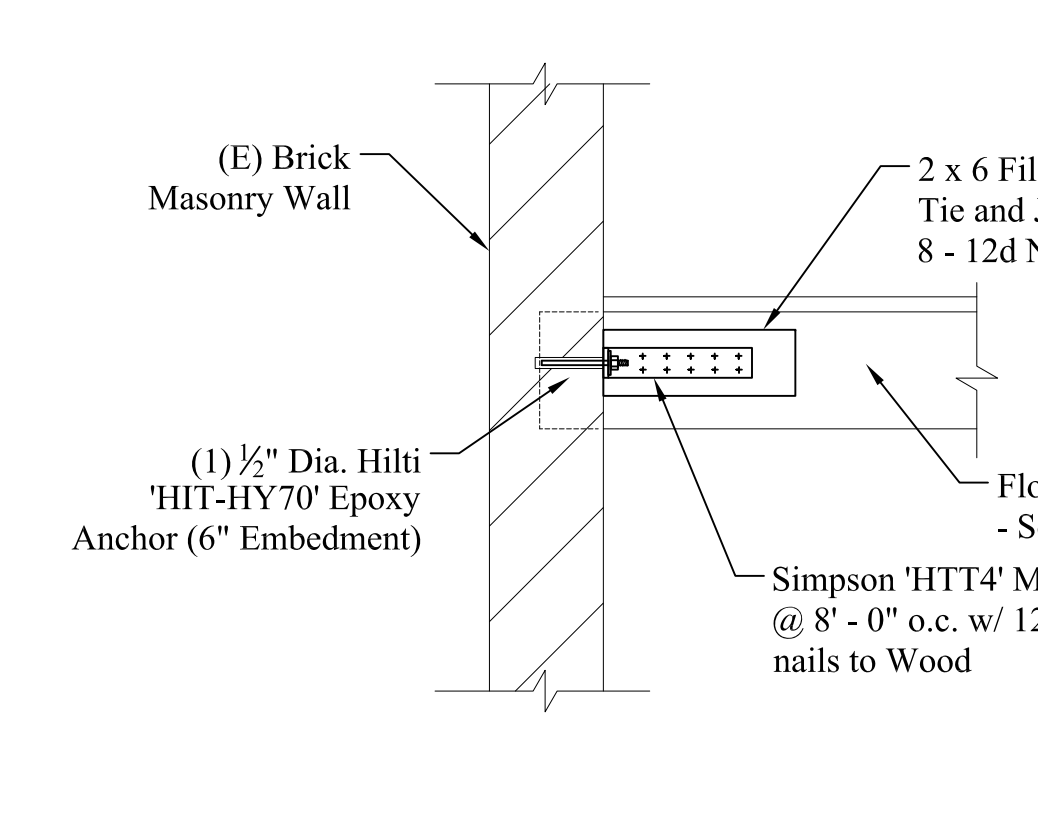
LIFE SAFETY NOTES

- THE BUILDING SHALL HAVE AN NFPA 13R FIRE SUPPRESSION SPRINKLER SYSTEM INSTALLED. SPRINKLER SYSTEM SHALL BE INSTALLED BY A CERTIFIED SPRINKLER CONTRACTOR AND SHALL BE REVIEWED AND APPROVED BY THE STATE OF MAINE FIRE MARSHAL AS WELL AS THE LOCAL AUTHORITY HAVING JURISDICTION. THE CONTRACTOR SHALL BEAR SOLE RESPONSIBILITY FOR THE DESIGN AND INSTALLATION OF THE SYSTEM FOR OCCUPANCY.
- THE BUILDING SHALL HAVE A FIRE ALARM SYSTEM AS REQUIRED FOR COMPLIANCE WITH NFPA 101 LIFE SAFETY CODE COORDINATE WITH SPRINKLER SYSTEM. VERIFY LOCATION OF ALARM AND NOTIFICATION PANELS WITH THE AUTHORITY HAVING JURISDICTION.
- ALL ALARMS AND DETECTORS SHALL BE INTERCONNECTED.
- REFER TO THE WINDOW SCHEDULE FOR EGRESS WINDOWS.

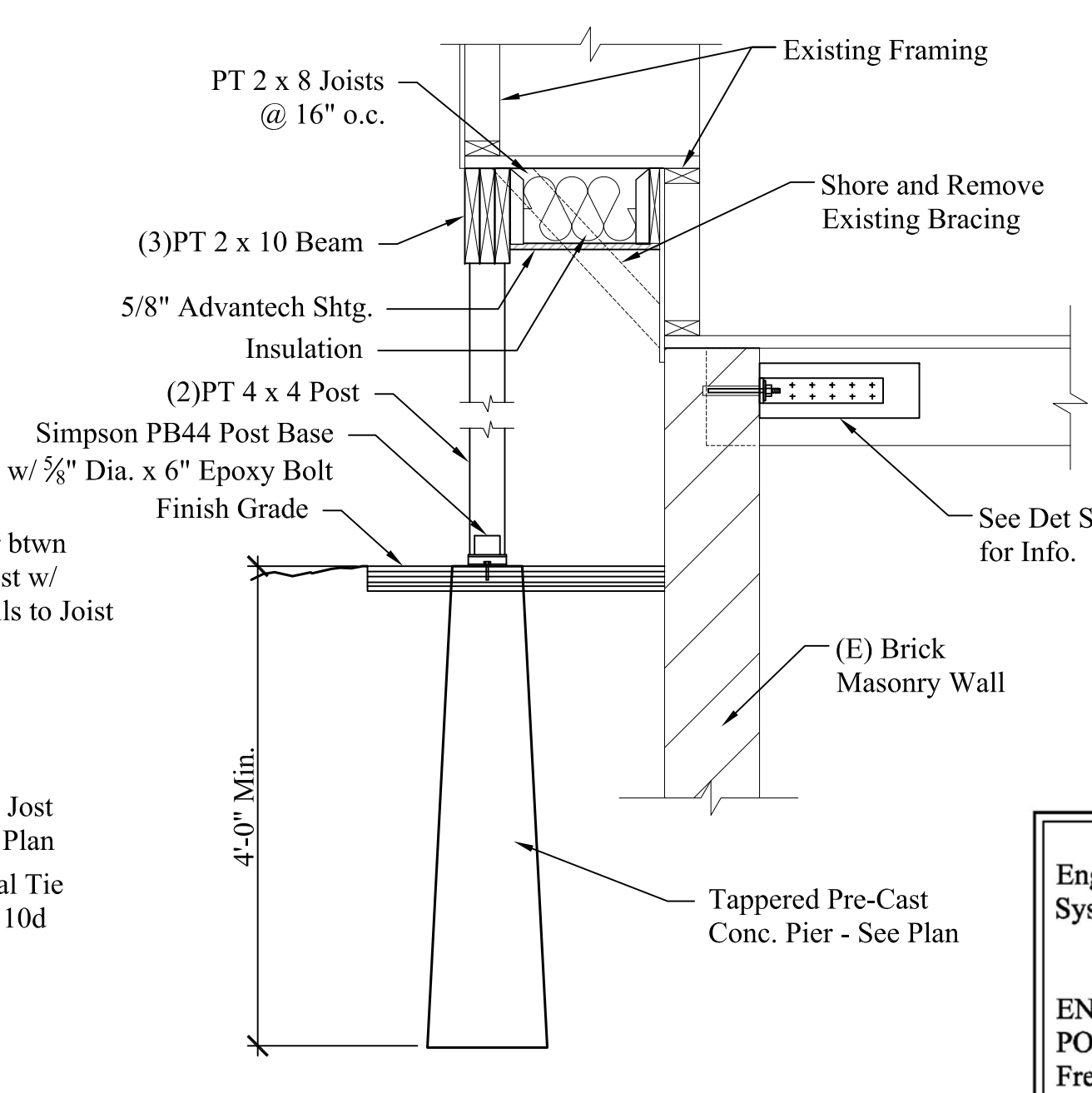
GENERAL NOTES

- ALL HORIZONTAL UNIT SEPARATIONS (FLOOR/ CEILING/ ROOF) ASSEMBLIES SHALL BE 1 HR. FIRE RATED/ SIC 5.0.
 - SEE (S6) & (S8) & (S10)
- ALL VERTICAL UNIT SEPARATIONS (TENANT WALLS) SHALL BE 1 HR. FIRE RATED/ SIC 5.0.
 - SEE (S7)
- ALL STAIR ENCLOSURES SHALL BE 1 HR. FIRE RATED.
 - SEE (S9)
- SEE SHEET AS FOR HANDRAIL DETAILS

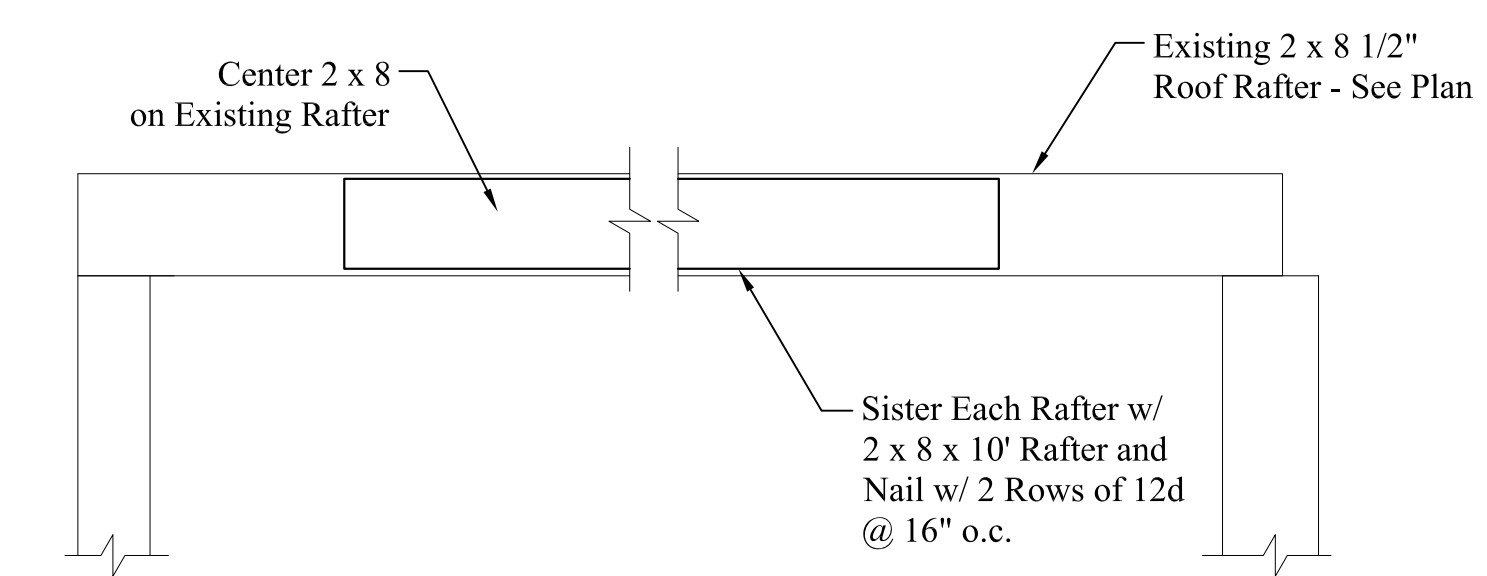
LEGEND	
(Symbol)	NEW WALL
(Symbol)	NEW WALL/EXISTING WALL W/INFILL
(Symbol)	EXISTING WALL
(Symbol)	THIN LINEWEIGHT DENOTES EXISTING CONDITIONS
(Symbol)	HEAVY LINEWEIGHT DENOTES NEW CONDITIONS
(Symbol)	DEMOLISHED OR REMOVED STRUCTURE OR EQUIPMENT
(Symbol)	EXTERIOR LIGHT



S1 DETAIL-FLOOR TIES @ EXIST. BRICK WALL
Scale: 3/4" = 1'-0"



S2 BAY WINDOW SUPPORT
Scale: 3/4" = 1'-0"



S3 ROOF RAFTER REINFORCEMENT
Scale: 3/4" = 1'-0"

STRUCTURAL HEADER SCHEDULE

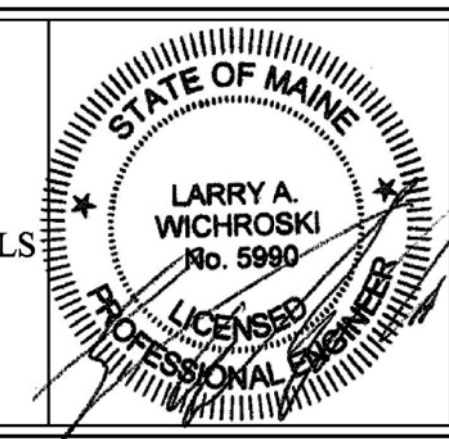
LVL's
 5' wide openings - Use (2) 1 3/4" x 9 1/2" LVL's.
 4' wide openings - Use (2) 1 3/4" x 9 1/2" LVL's.
 3' or less openings - Use (3) 2 x 10's.

Second Floor Level:
 5' wide openings - Use (2) 1 3/4" x 9 1/2" LVL's.
 4' wide openings - Use (3) 2 x 10's.
 3' or less openings - Use (2) 2 x 10's.

Third Floor Level:
 5' and less openings - Use (2) 2 x 10's.

WINDOW & DOOR SCHEDULE & HARDWARE SETS

Engineering Review of Structural Framing System Only.
 ENGINEERING DESIGN PROFESSIONALS
 PO Box 575
 Freeport, Maine 04032
 207-865-9505



50 WILMOT STREET
 MORIN DRAFTING 318-1177
 50 WILMOT STREET, L.L.C.
 477 CONGRESS STREET PORTLAND, MAINE

BASEMENT PLAN & DETAILS

DRAWN: J. MORIN
 SCALE: 1/4"=1'-0"
 DATE: 11-18-2015
 PLAN NO:

