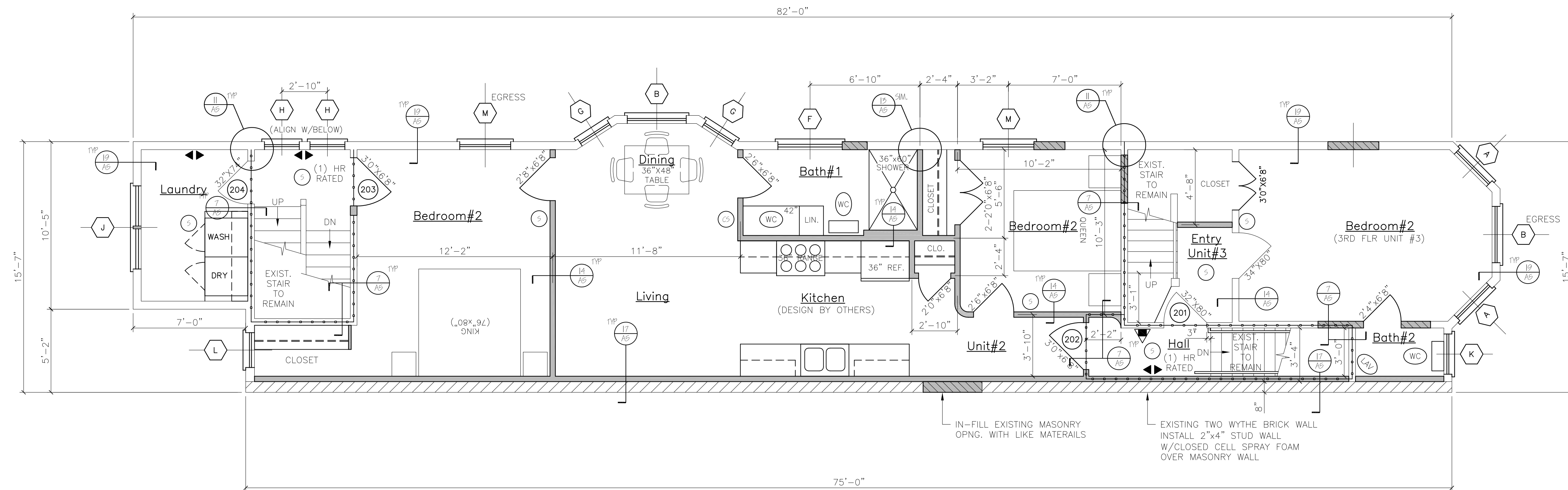


NOTES:

1. ALL DIMENSIONS ARE FOR REFERENCE ONLY. ALL DIMENSIONS SHALL BE FIELD VERIFIED BEFORE ORDERING SUPPLIES OR BEING CONSTRUCTION.



SECOND FLOOR PLAN  
Unit #2

DOOR SCHEDULE						
NO.	SIZE (WxH) (E) = EXISTING	INSUL	FIRE RATING	HARDWARE	SWING	REMARKS
1	5'-0"x6'-8"	R-7	1 HR	HW-5	SEE PLAN	* DOOR / FRAME ASSEMBLY, SELF CLOSING PANEL
2	2'-8"x6'-8" (E)	R-7	1 HR	HW-1	SEE PLAN	* DOOR / FRAME ASSEMBLY, SELF CLOSING FULL VIEW
3	5'-0"x6'-8" (E)	R-7	1 HR	HW-5	SEE PLAN	* DOOR / FRAME ASSEMBLY, SELF CLOSING, 9 LITE
4	5'-0"x6'-8" (E)	R-7	1 HR	HW-5	SEE PLAN	* DOOR / FRAME ASSEMBLY, SELF CLOSING, 9 LITE
5	2'-8"x6'-8"	R-7	1 HR	HW-4	SEE PLAN	* DOOR / FRAME ASSEMBLY, SELF CLOSING PANEL
6	5'-0"x6'-8"	R-7	1 HR	HW-2	SEE PLAN	* DOOR / FRAME ASSEMBLY, SELF CLOSING
7	2'-6"x6'-8" (E)	R-7	1 HR	HW-5	SEE PLAN	* DOOR / FRAME ASSEMBLY, SELF CLOSING PANEL
8	2'-8"x6'-8" (E)	R-7	1 HR	HW-4	SEE PLAN	* DOOR / FRAME ASSEMBLY, SELF CLOSING PANEL
9	2'-8"x6'-8" (E)	R-7	1 HR	HW-2	SEE PLAN	* DOOR / FRAME ASSEMBLY, SELF CLOSING
10	5'-0"x6'-8"	R-7	1 HR	HW-2	SEE PLAN	* DOOR / FRAME ASSEMBLY, SELF CLOSING
11	5'-0"x6'-8"	R-7	1 HR	HW-2	SEE PLAN	* DOOR / FRAME ASSEMBLY, SELF CLOSING
12	2'-8"x6'-8" (E)	R-7	1 HR	HW-4	SEE PLAN	* DOOR / FRAME ASSEMBLY, SELF CLOSING
13	2'-8"x6'-8" (E)	R-7	1 HR	HW-4	SEE PLAN	* DOOR / FRAME ASSEMBLY, SELF CLOSING
14	2'-8"x6'-8" (E)	R-7	1 HR	HW-2	SEE PLAN	* DOOR / FRAME ASSEMBLY, SELF CLOSING

NOTE: SEE FLOOR PLANS FOR UNIT INTERIOR DOOR SIZES, SWING AND TYPE.  
REPLACE EXISTING DOORS & FRAMES NOTED IN DOOR SCHEDULE AS REQUIRED.

HW-1	3 BUTTS*, DOOR ENTRY LEVEL LOCKSET; THRESHOLD WEATHER STRIPPING; DOOR BOTTOM	* GC OPTION: SELF CLOSING BUTTS OR DOOR CLOSERS
HW-2	3 BUTTS*, DOOR ENTRY LEVEL LOCKSET; THRESHOLD WEATHER STRIPPING; DOOR BOTTOM; DOOR VENER	* GC OPTION: SELF CLOSING BUTTS OR DOOR CLOSERS
HW-3	3 BUTTS*, DOOR ENTRY LEVEL LOCKSET; THRESHOLD WEATHER STRIPPING; DOOR BOTTOM	* GC OPTION: SELF CLOSING BUTTS OR DOOR CLOSERS
HW-4	3 BUTTS*, DOOR ENTRY LEVEL LOCKSET	* GC OPTION: SELF CLOSING BUTTS OR DOOR CLOSERS
HW-5	3 BUTTS*, DOOR PASSAGE LEVER LATCH SET W/ EXIT FUNCTION	* GC OPTION: SELF CLOSING BUTTS OR DOOR CLOSERS
INTERNAL UNIT DOORS	3 BUTTS; LATCH SET EXCEPT PRIVACY SET AT BATHROOMS	* GC OPTION: SELF CLOSING BUTTS OR DOOR CLOSERS

WINDOW SCHEDULE						
NO.	SIZE (WxH)	TYPE	FIRE RATING	GLAZING	ROUGH OPENING (WxH)	REMARKS
A	1W2852	DOUBLE HUNG	NONE	TEMP, INSUL, GL	2'-10 1/2" x 9'-5 1/2" x 4"	ANDERSEN OR EQUIV., (TEMPERED WINDOW)
B	1W2452	DOUBLE HUNG	NONE	TEMP, INSUL, GL	1 B.D. IN FIELD	ANDERSEN OR EQUIV., (EGRESS & TEMPERED WINDOW)
C	1W2852	DOUBLE HUNG	NONE	TEMP, INSUL, GL	2'-10 1/2" x 9'-5 1/2" x 4"	ANDERSEN OR EQUIV., (TEMPERED WINDOW)
D	2-1W2452	DOUBLE HUNG	NONE	INSUL, GL	4'-11 1/2" x 16'-4" x 5 1/2" x 4"	ANDERSEN OR EQUIV.
E	FR40	ROUND	NONE	INSUL, GL	4'-0" x 1/2" x 4'-0" x 1/2"	ANDERSEN OR EQUIV.
F	FR40	ROUND	NONE	TEMP, INSUL, GL	4'-0" x 1/2" x 4'-0" x 1/2"	ANDERSEN OR EQUIV., (TEMPERED WINDOW)
G	1W2092	DOUBLE HUNG	NONE	TEMP, INSUL, GL	2'-2 1/2" x 8'-6" x 5 1/2" x 4"	ANDERSEN OR EQUIV., (TEMPERED WINDOW)
H	1W2042	DOUBLE HUNG	NONE	TEMP, INSUL, GL	2'-2 1/2" x 8'-6" x 5 1/2" x 4"	ANDERSEN OR EQUIV., (TEMPERED WINDOW)
I	2-1W2452	DOUBLE HUNG	NONE	INSUL, GL	4'-11 1/2" x 16'-4" x 5 1/2" x 4"	ANDERSEN OR EQUIV.
J	1W2452	DOUBLE HUNG	NONE	TEMP, INSUL, GL	2'-6 1/2" x 8'-6" x 5 1/2" x 4"	ANDERSEN OR EQUIV., (TEMPERED WINDOW)
K	1W2042	DOUBLE HUNG	NONE	INSUL, GL	2'-2 1/2" x 8'-6" x 5 1/2" x 4"	ANDERSEN OR EQUIV.
L	1W9052	DOUBLE HUNG	NONE	TEMP, INSUL, GL	5'-2 1/2" x 8'-6" x 5 1/2" x 4"	ANDERSEN OR EQUIV., (EGRESS & TEMPERED WINDOW)
M	1W9092	DOUBLE HUNG	NONE	TEMP, INSUL, GL	5'-2 1/2" x 8'-6" x 5 1/2" x 4"	ANDERSEN OR EQUIV., (TEMPERED WINDOW)
N	4'-0"x2'-0"	TRANSOM	NONE	TEMP.	TO BE DETERMINED IN FIELD	BROSCO (TEMPERED GLAZING)

NOTE: SEE STRUCTURAL HEADER SCHEDULE FOR HEADER SIZE

WINDOW & DOOR SCHEDULE & HARDWARE SETS

NFPA LEGEND	
	EXIT LIGHT
	FIRE EXTINGUISHER
	FIRE ALARM PANEL - LOCATE PER AMJ
	EMERGENCY LIGHT
	SMOKE DETECTOR W/ SOUNDER BASE & STROBE (INTERCONNECTED)
	COMBINATION CARBON MONOXIDE / SMOKE DETECTOR W/ SOUNDER BASE & STROBE (INTERCONNECTED)
	KNOCK BOX - LOCATE PER AMJ
	1 HR RATED PARTITION
	1 HR RATED SEPARATION PARTITION

LIFE SAFETY NOTES	
1.	THE BUILDING SHALL HAVE AN NFPA (R) FIRE SUPPRESSION SPRINKLER SYSTEM INSTALLED. SPRINKLER SYSTEM SHALL BE INSTALLED BY A CERTIFIED SPRINKLER CONTRACTOR AND SHALL BE REVIEWED AND APPROVED BY THE STATE OF MAINE FIRE MARSHAL AS WELL AS THE LOCAL AUTHORITY HAVING JURISDICTION. THE CONTRACTOR SHALL BEAR SOLE RESPONSIBILITY FOR THE DESIGN AND INSTALLATION OF THE SYSTEM FOR OCCUPANCY.
2.	THE BUILDING SHALL HAVE A FIRE ALARM SYSTEM AS REQUIRED FOR COMPLIANCE WITH NFPA (C) LIFE SAFETY CODE COORDINATE WITH SPRINKLER SYSTEM. VERIFY LOCATION OF ALARM AND NOTIFICATION PANELS WITH THE AUTHORITY HAVING JURISDICTION.
3.	ALL ALARMS AND DETECTORS SHALL BE INTERCONNECTED WITHIN EACH LIVING UNIT.
4.	REFER TO THE WINDOW SCHEDULE FOR EGRESS WINDOWS.

GENERAL NOTES	
1.	ALL HORIZONTAL UNIT SEPARATIONS (FLOOR/CEILING/ROOF) ASSEMBLIES SHALL BE 1 HR. FIRE RATED / S/C SO. -SEE
2.	ALL VERTICAL UNIT SEPARATIONS (PARTIAL WALLS) SHALL BE 1 HR. FIRE RATED / S/C SO. -SEE
3.	ALL STAIR ENCLOSURES SHALL BE 1 HR. FIRE RATED. -SEE
4.	SEE SHEET AS FOR HANDRAIL DETAILS

LEGEND	
	NEW WALL
	NEW WALL/EXISTING WALL W/INFILL
	EXISTING WALL
	THIN LINEWEIGHT DENOTES EXISTING CONDITIONS
	HEAVY LINEWEIGHT DENOTES NEW CONDITIONS
	DEMOLISHED OR REMOVED STRUCTURE OR EQUIPMENT

STRUCTURAL HEADER SCHEDULE

LVL's  
5' wide openings - Use (2) 1 3/4" x 9 1/2" LVL's.  
4' wide openings - Use (2) 1 3/4" x 9 1/2" LVL's.  
3' or less openings - Use (3) 2 x 10's.

Second Floor Level:  
5' wide openings - Use (2) 1 3/4" x 9 1/2" LVL's.  
4' wide openings - Use (3) 2 x 10's.  
3' or less openings - Use (2) 2 x 10's.

Third Floor Level:  
5' and less openings - Use (2) 2 x 10's.

<p>Engineering Review of Structural Framing System Only.</p> <p>ENGINEERING DESIGN PROFESSIONALS PO Box 575 Freeport, Maine 04032 207-865-9505</p>		50 WILMOT STREET
		MORIN DRAFTING 318-1177
		50 WILMOT STREET, L.L.C. 477 CONGRESS STREET PORTLAND, MAINE
		SECOND FLOOR PLAN
DRAWN: J. MORIN		<p>A3</p>
SCALE: 1/4"=1'-0"		
DATE: 11-18-2015		
PLAN NO:		

