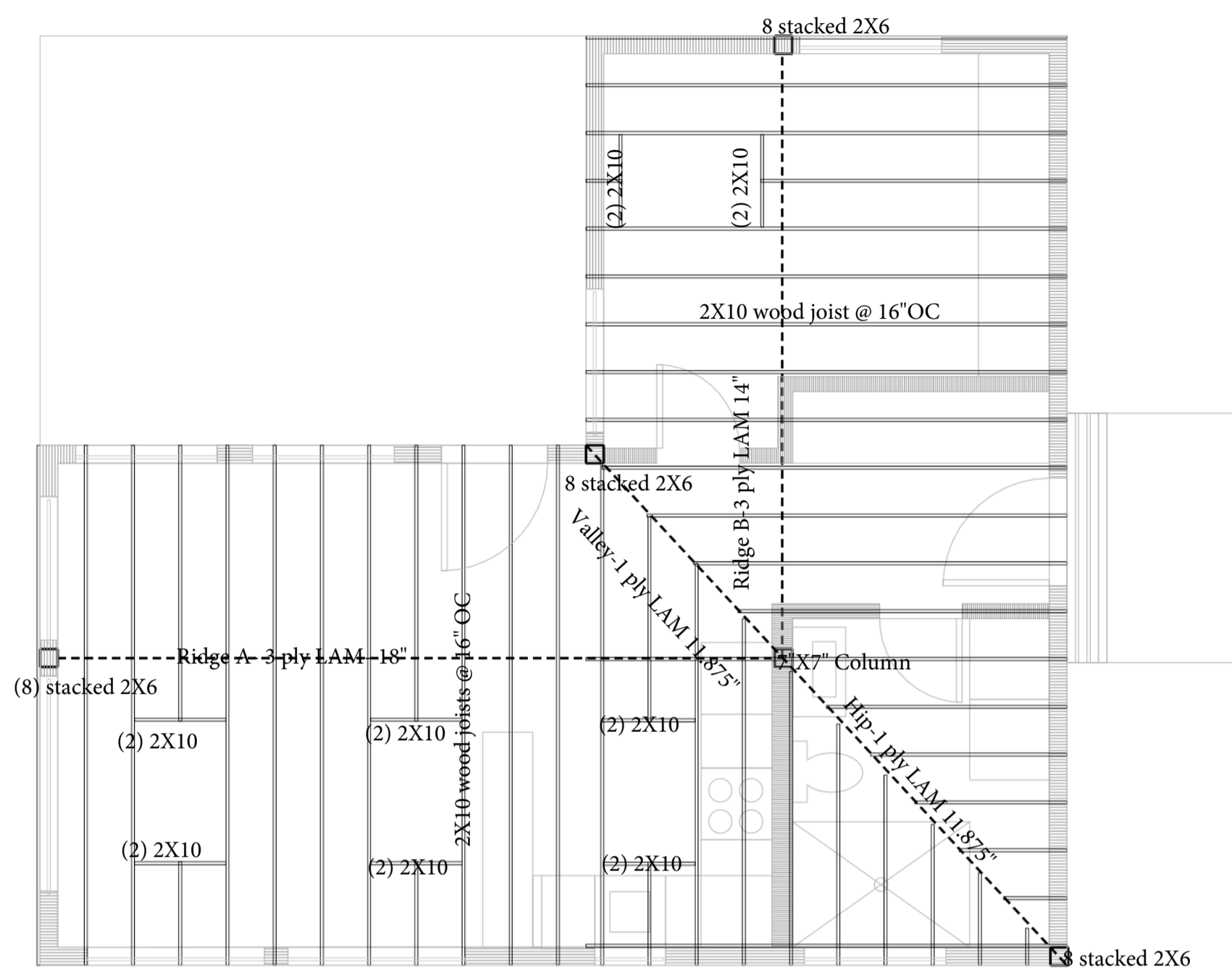
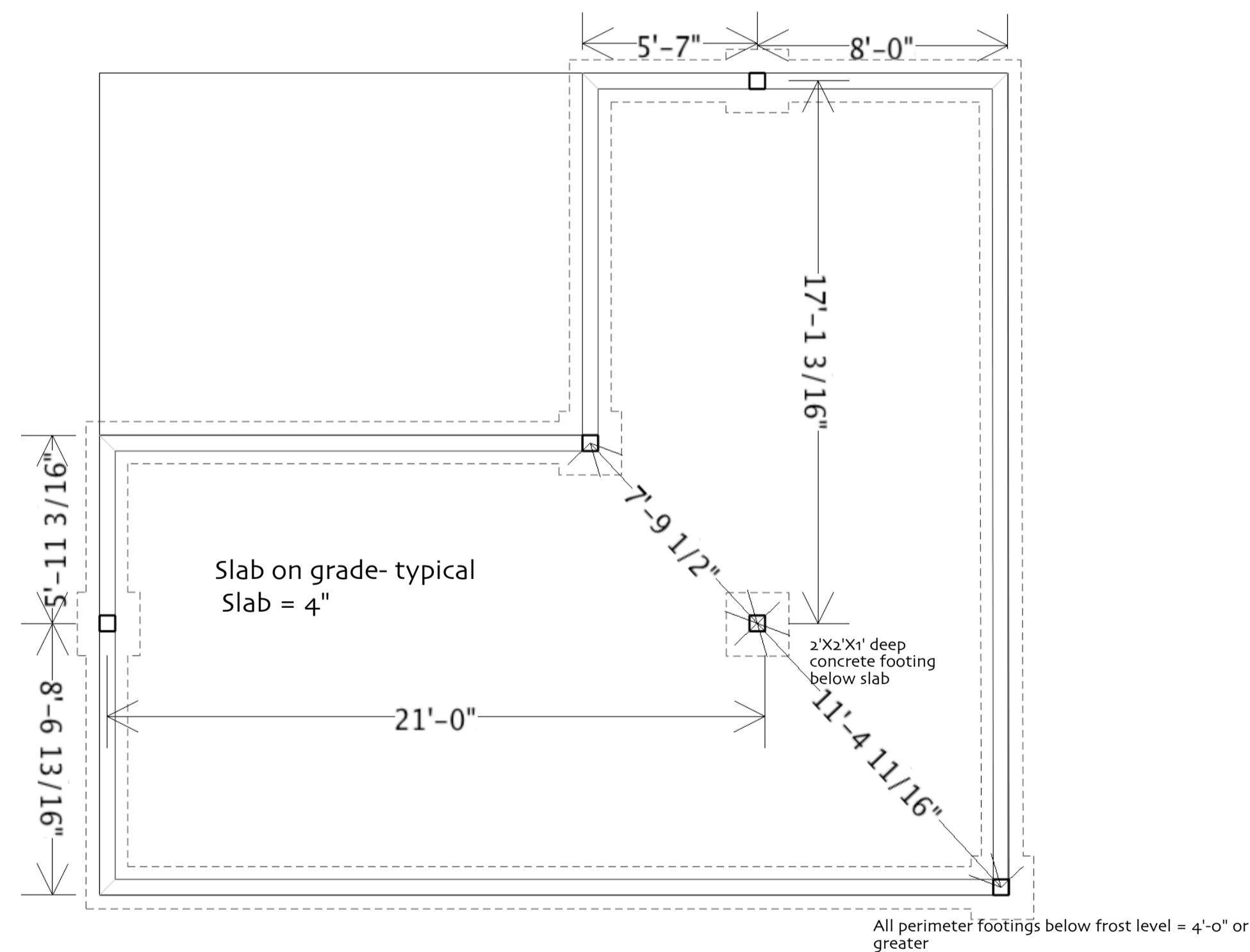


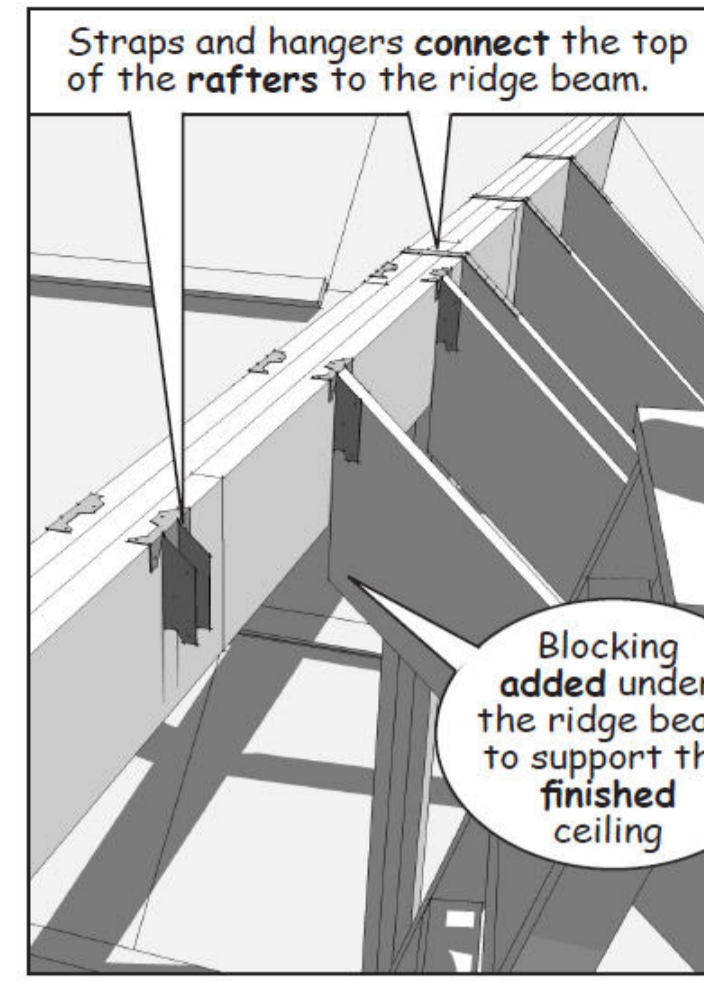
NOTES:  
 All door/window headers (2) 2x6, spans are noted on opening sizes depicted on elevation page.  
 All door/window jack studs (2) 2x6  
 Full depth horizontal blocking every 4'-0" for all exterior walls.  
 Continuous sheathing also provides additional bracing.  
 Patio to be stone pavers.  
 Column to foundation = S/LTT tension ties- see attached spec sheet for connection details  
 Column to Ridge = MST Strap ties. see attached spec sheet for connection details  
 All construction to be in compliance with the 2009 IRC.



ROOF FRAMING PLAN  
 1/4" = 1'-0"

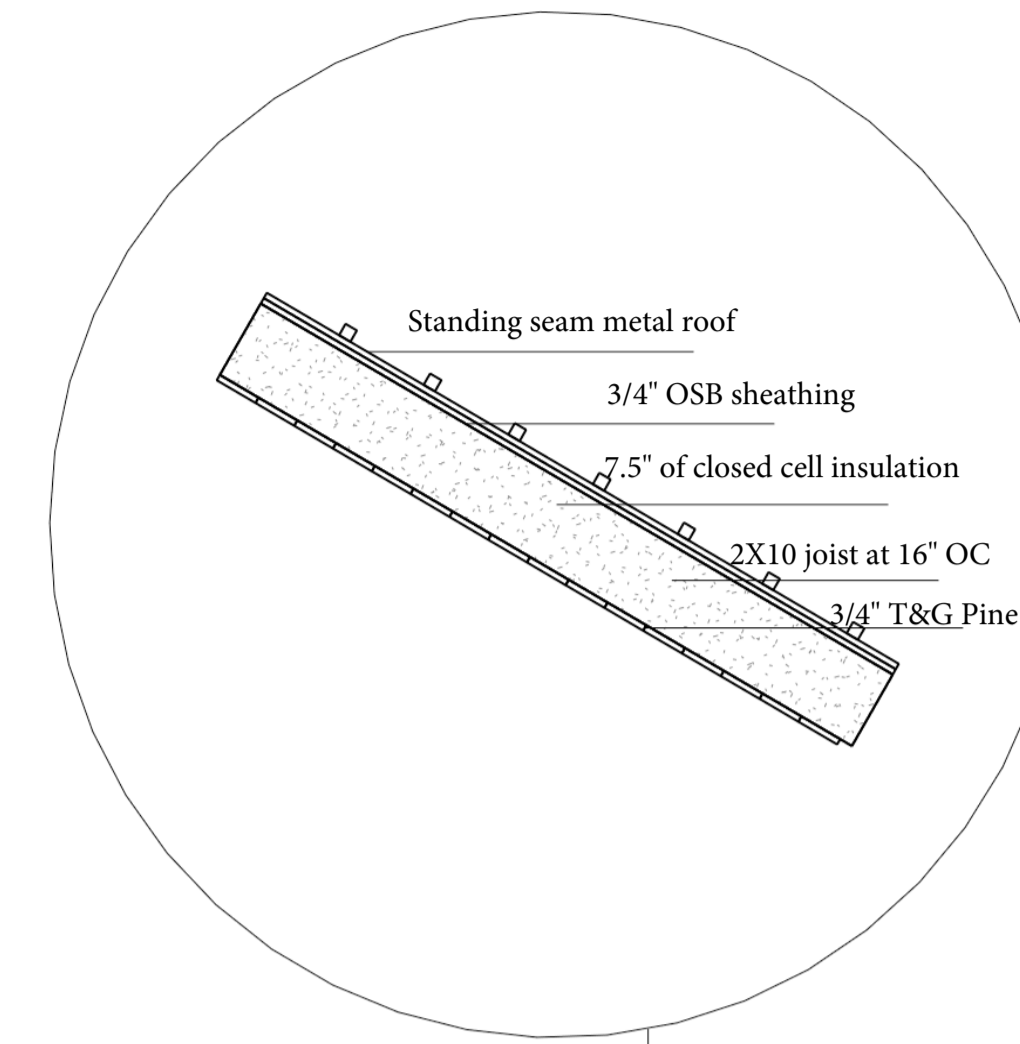


FOUNDATION PLAN  
 1/4" = 1'-0"

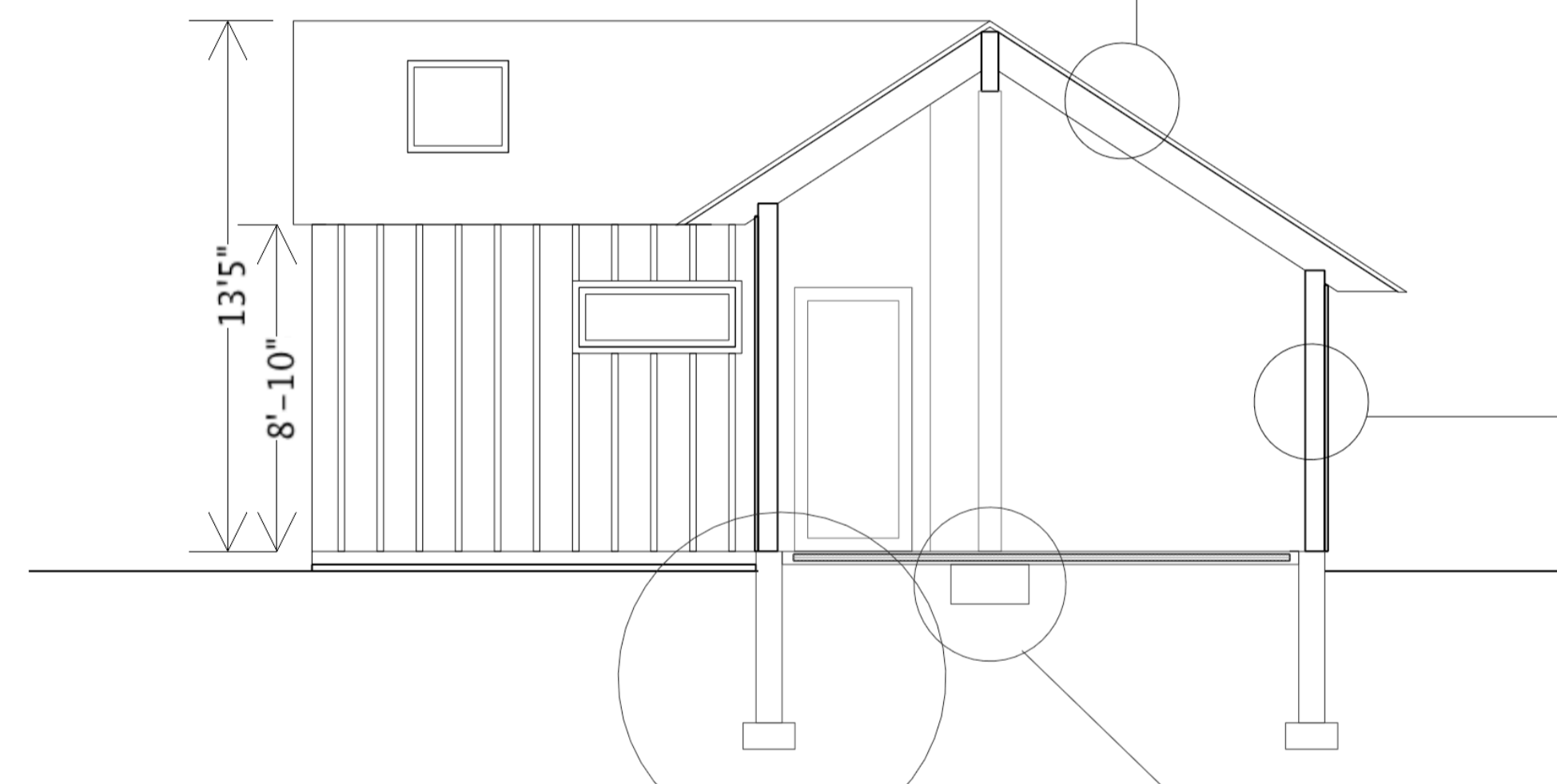


Blocking added under the ridge beam to support the finished ceiling

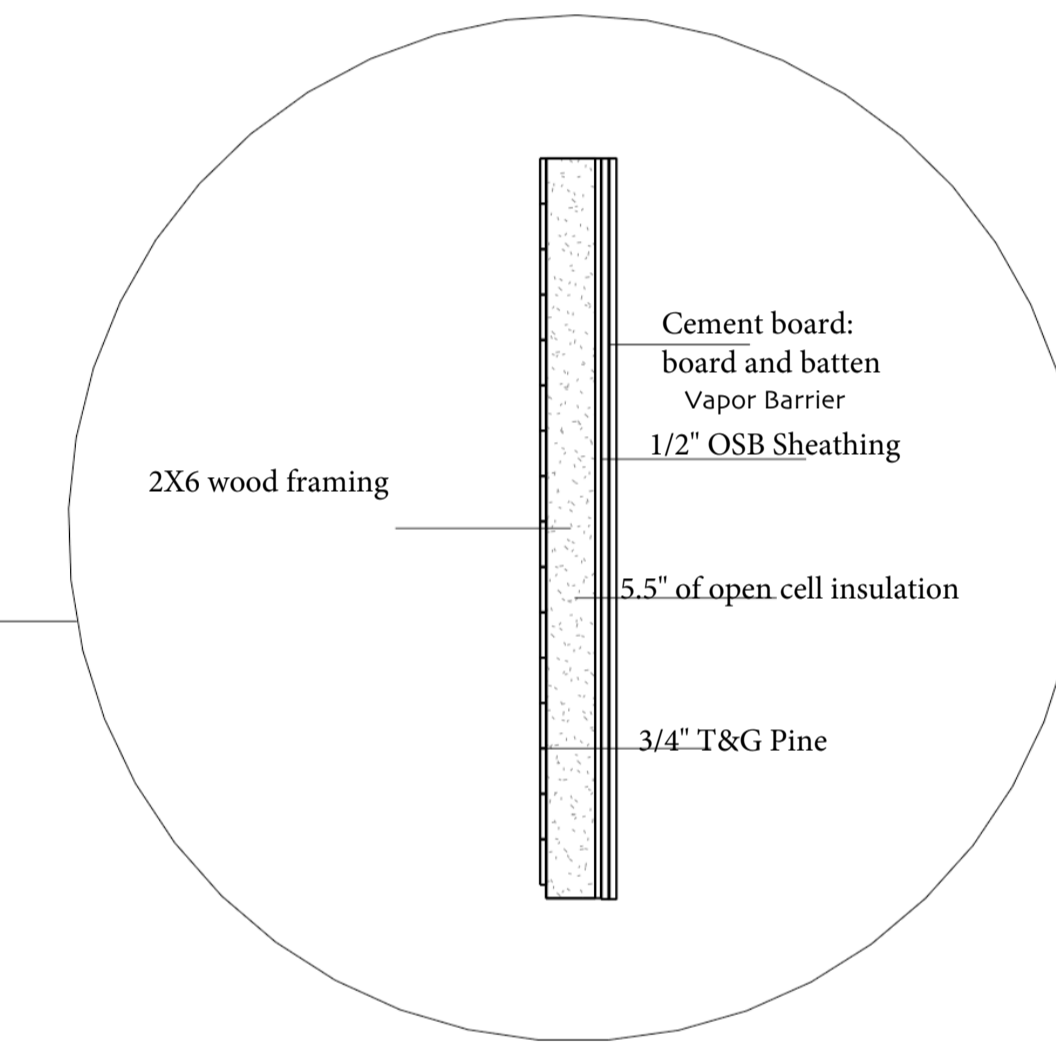
ROOF DETAIL  
 1/2" = 1'-0"



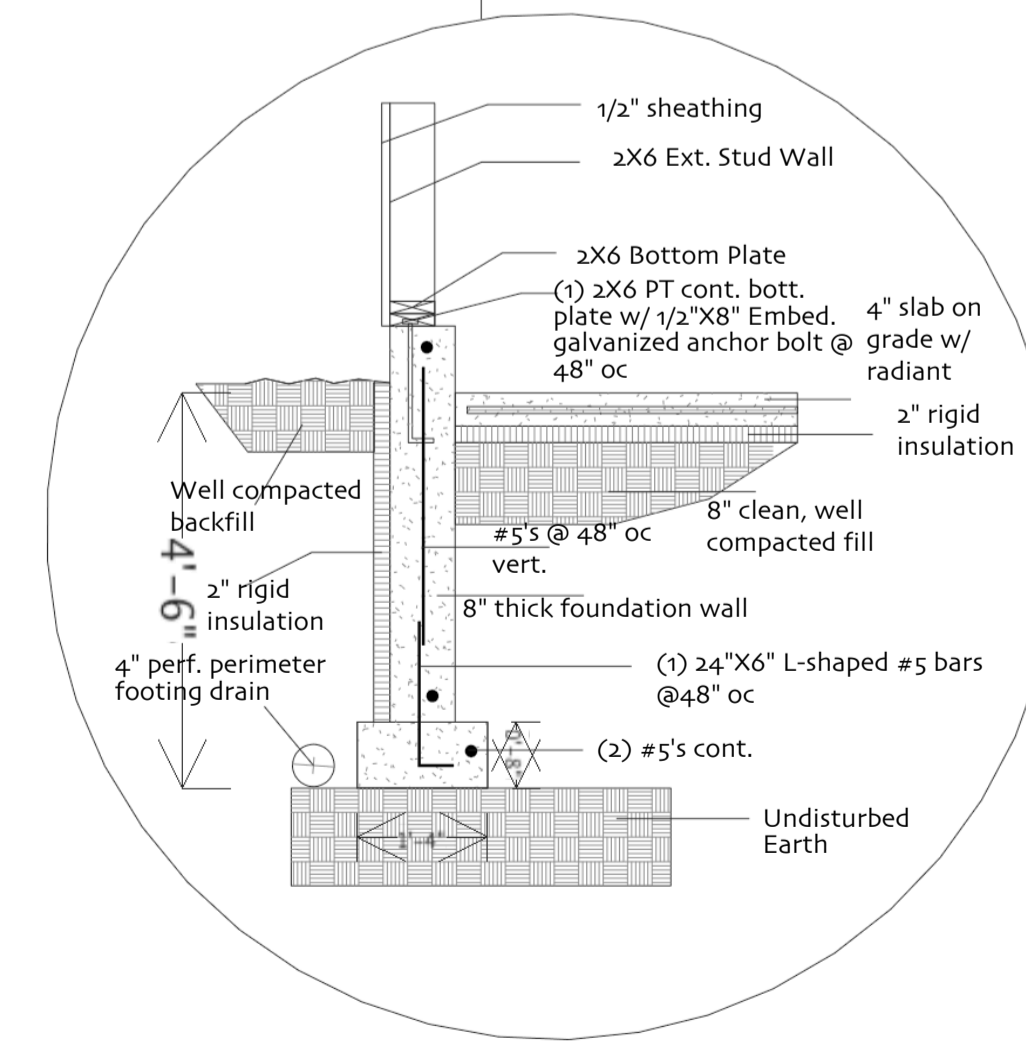
Thermal barrier in compliance with IRC 315.5.2- T&G planks greater than 15/32



SECTION A  
 1/4" = 1'-0"



WALL DETAIL  
 1/2" = 1'-0"



FOUNDATION DETAIL  
 1/2" = 1'-0"

