

FIRST FLOOR PLAN
1/4" = 1'-0"

Ⓒ Combination smoke and carbon monoxide detectors

Project Description: Build a 499SF single level single family.

CODES:
IRC 2009 - Single Family
NFPA 2009 - Sprinkler System 13D

NFPA 101
3.3.32.5 New Building
6.1.8.1 Residential Occupancy
6.1.8.1.1 Single Family Dwelling Unit
6.2.2.3 Ordinary Hazard of Contents
7.3.1 Occupancy load: 200
Gross 501sf = 3 Occupants
Number of Exits = 2

IECC - Climate Zone 6
402.1.1 Fenestration U-Factor 0.35
Ceiling R-Value 49
Wall R-Value 21
Slab R-Value 10

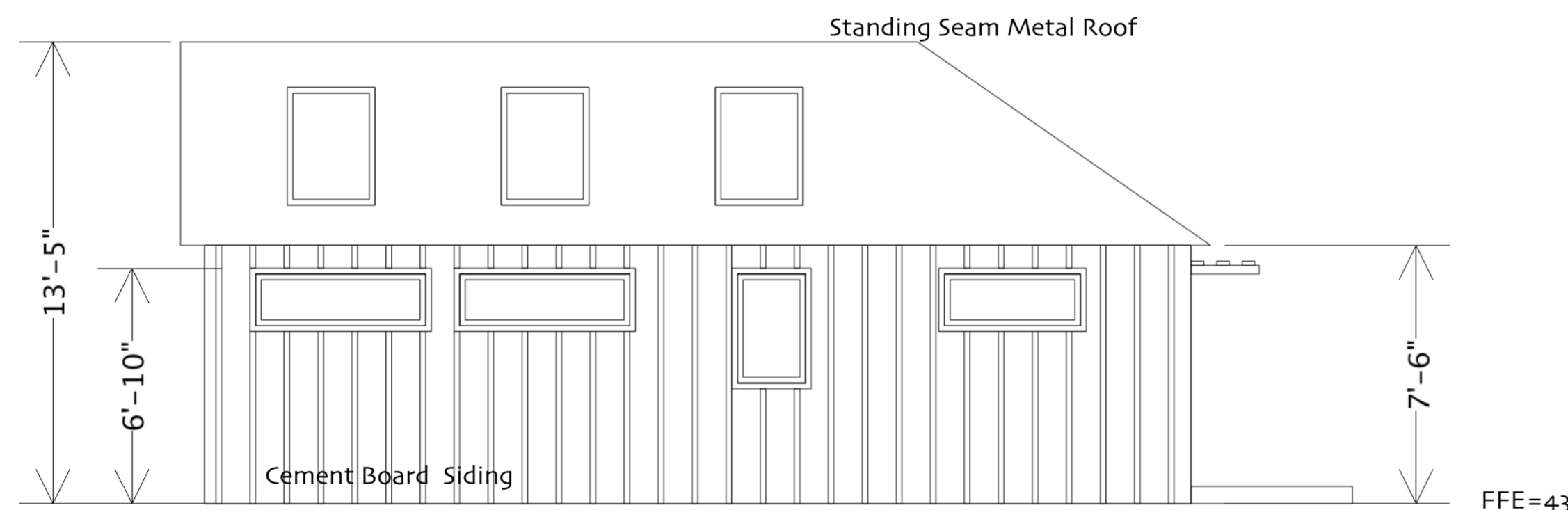
Zoning- Land Use Code Chapter 14
Zone: R-6
Side Setback: 5'
Rear Setback: 10'
Front Setback: 1' = the average depth of the front yards
43 Chapel St = 2' and o Chapel St = 0'

List of Drawings

- A1.0 - Architectural Plans- Elevations- Life Safety
- S1.0-Structural
- S1.1 - Structural
- C1.0 -Site Plan
- SR1.0 - Survey
- SR1.1- Street Documentation
- RES-REScheck

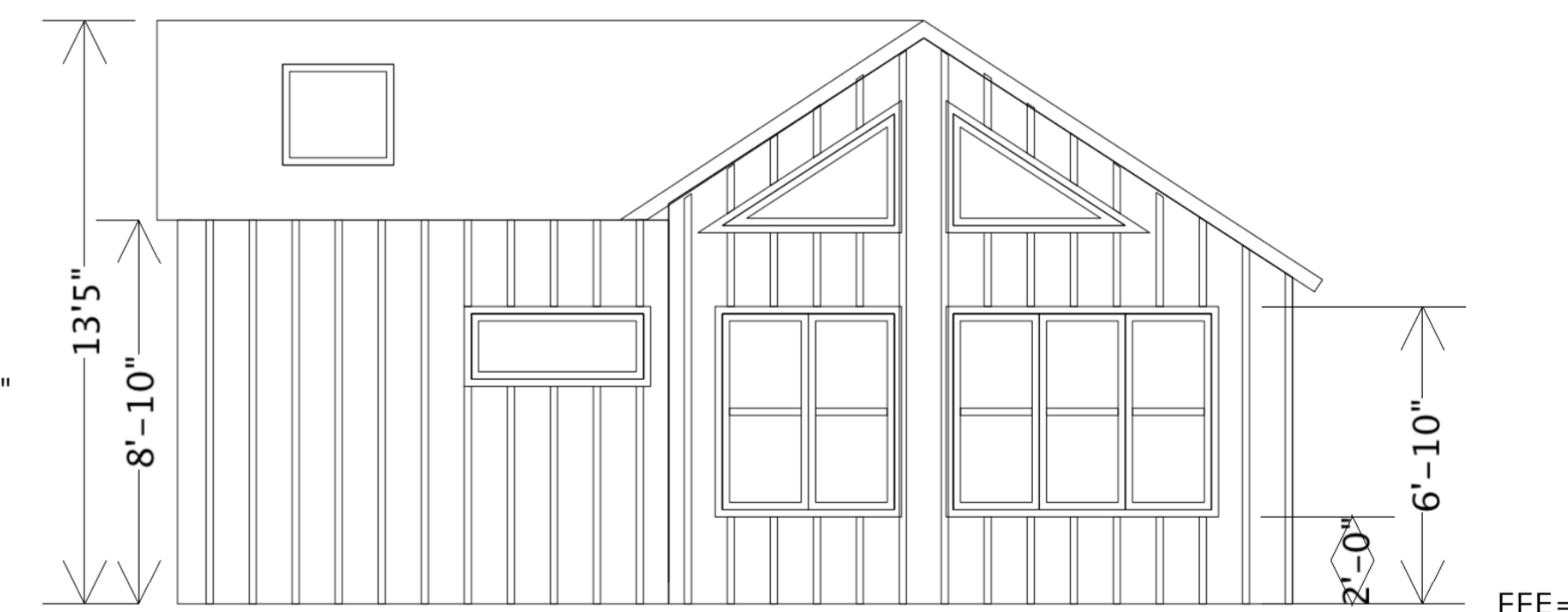
Component	Assembly	Gross Area or Slab Perimeter	Cavity Insulation R-Value	Continuous Insulation R-Value	U-Factor	Depth of Insulation
1 Ceiling	Cathedral	714 ft ²	55	49	0.01	
2 Skylight	Vinyl Frame, 2 Pane w/ Low-E	40 ft ²			0.55	
3 Wall	Wood Frame, 16in. o.c.	765 ft ²	29.2	25.1	0.021	
4 Window	Vinyl Frame, 2 Pane w/ Low-E	156 ft ²			0.35	
5 Door	Glass	40 ft ²			0.35	
6 Floor	Unheated Slab-On-Grade	110 ft		10	0.9	0.8 ft

- Skylights:
(3) fixed 31" X 47"
- Windows:
(2) fixed 5'-0" X 1'-6"
(1) casement 2'-0" X 3'-0"
(1) awning 4'-0" X 1'-6"



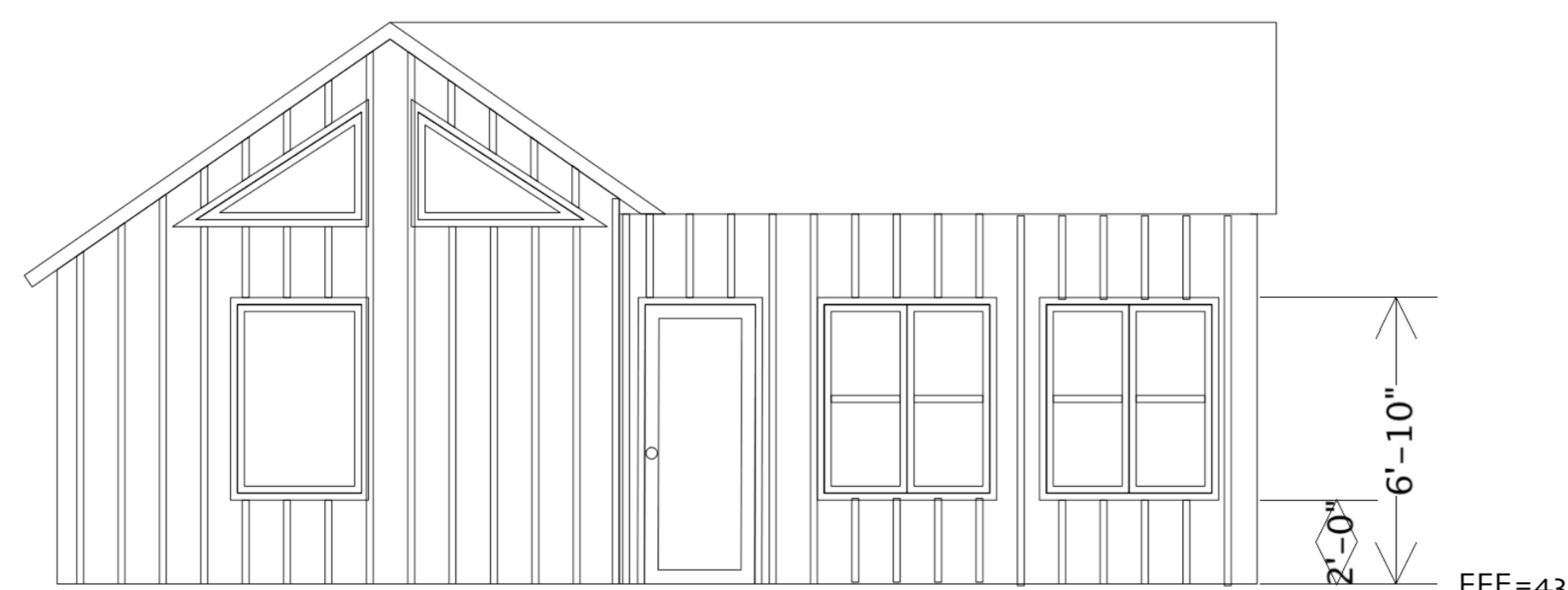
SOUTHWEST ELEVATION
1/4" = 1'-0"

- Skylights:
(1) fixed 31" X 47"
- Windows:
(1) fixed 4'-0" X 1'-6"
(2) triangle fixed, 4'-0" X 3'-0"
(6) double hung 2'-0" X 4'-8"



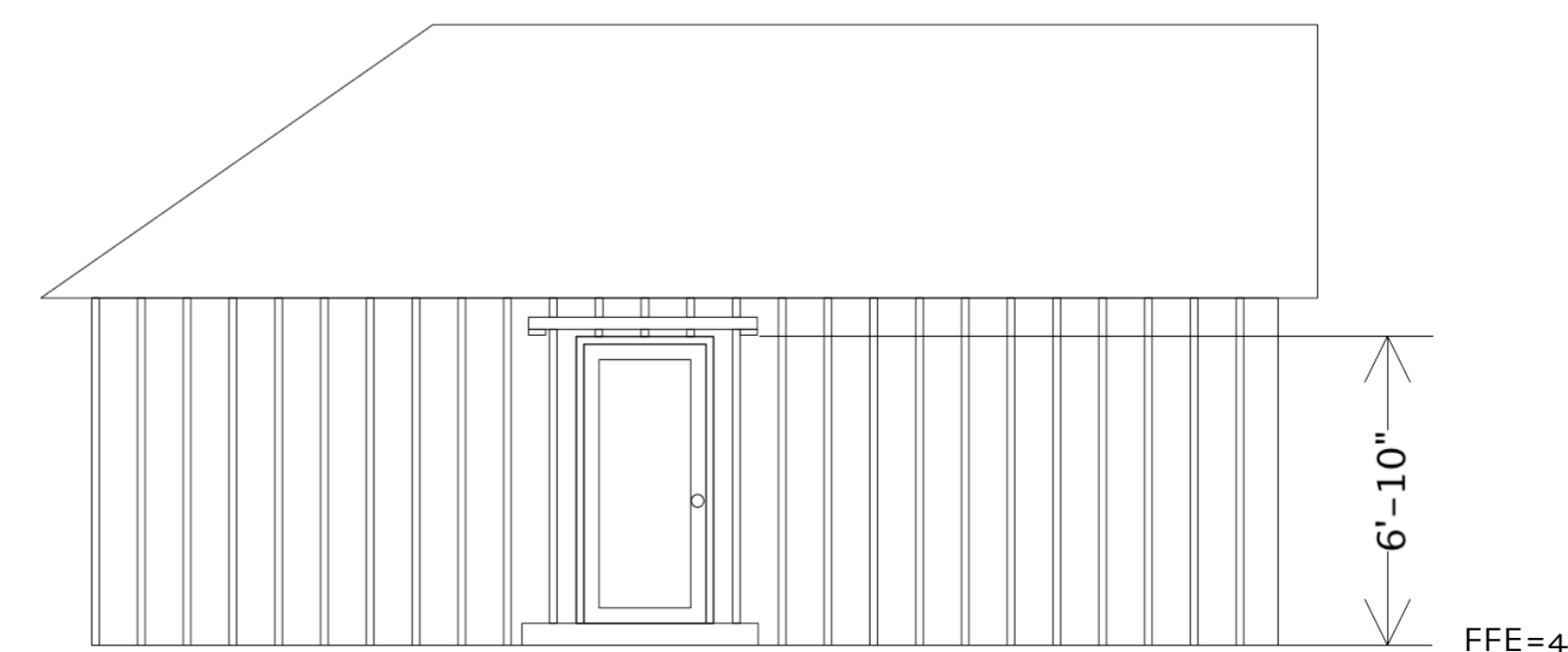
NORTHWEST ELEVATION
1/4" = 1'-0"

- Windows:
(2) triangle fixed, 4'-0" X 3'-0"
(1) casement (egress) 3'-0" X 4'-8"
(4) double hung 2'-0" X 4'-8"
- Door:
(1) 3'-0" X 6'-8"



NORTHEAST ELEVATION
1/4" = 1'-0"

- Door:
(1) 3'-0" X 6'-8"



SOUTHEAST ELEVATION
1/4" = 1'-0"

"The Cottage on Chapel"

49 Chapel Street Portland, Maine

Federal Street Phoenix LLC
PO Box 15341
Portland, ME 04112
Phone: 207-518-7038
E-mail: brentadler@gmail.com

Date: 4/10/17
Rev1
Rev2
Rev3

A1.0