

JOB NO.
10-020

DRWN. CHK
TWG WSBJR

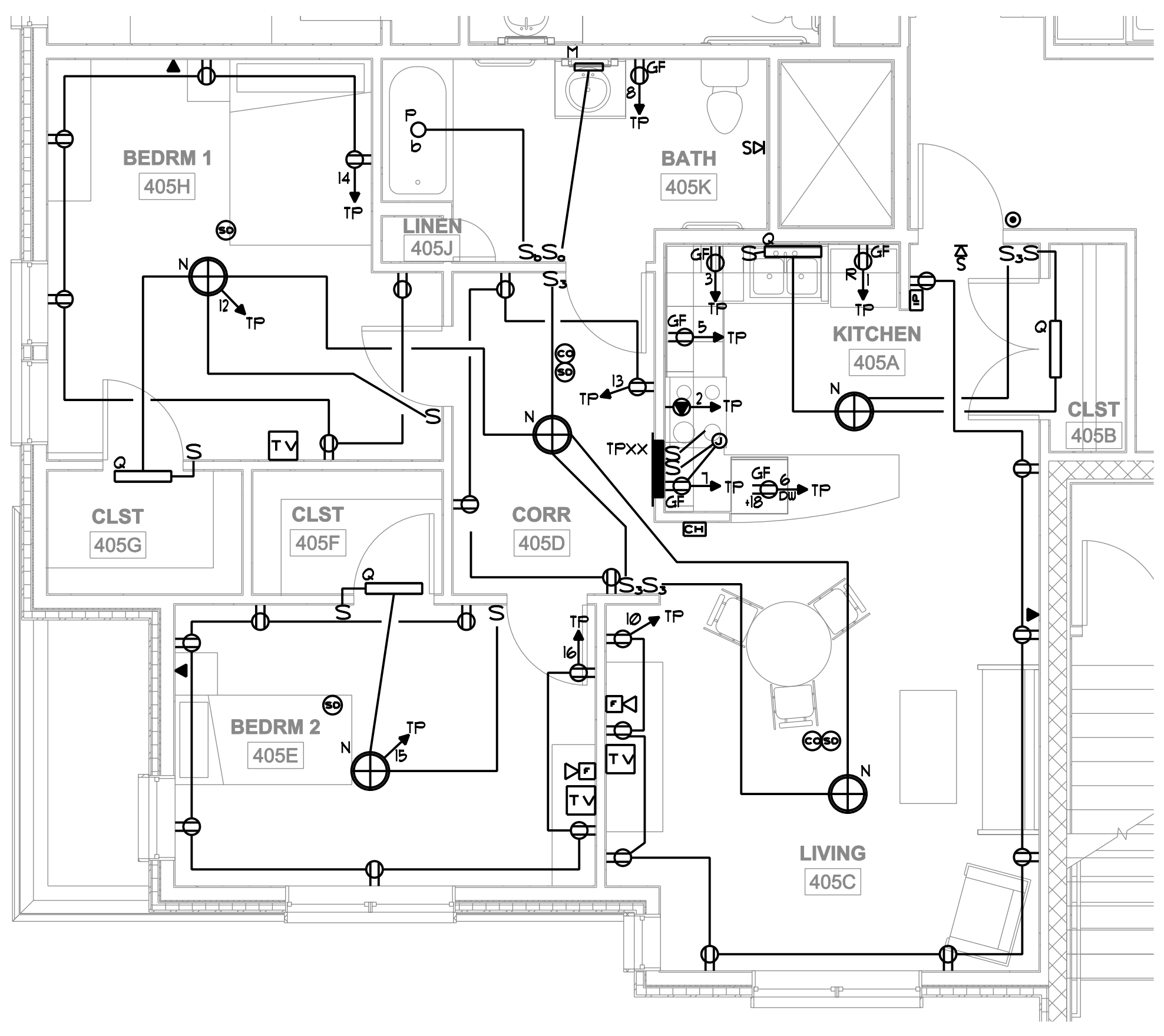
SCALE:
AS NOTED

ISSUE:
August 3, 2011
For Bid

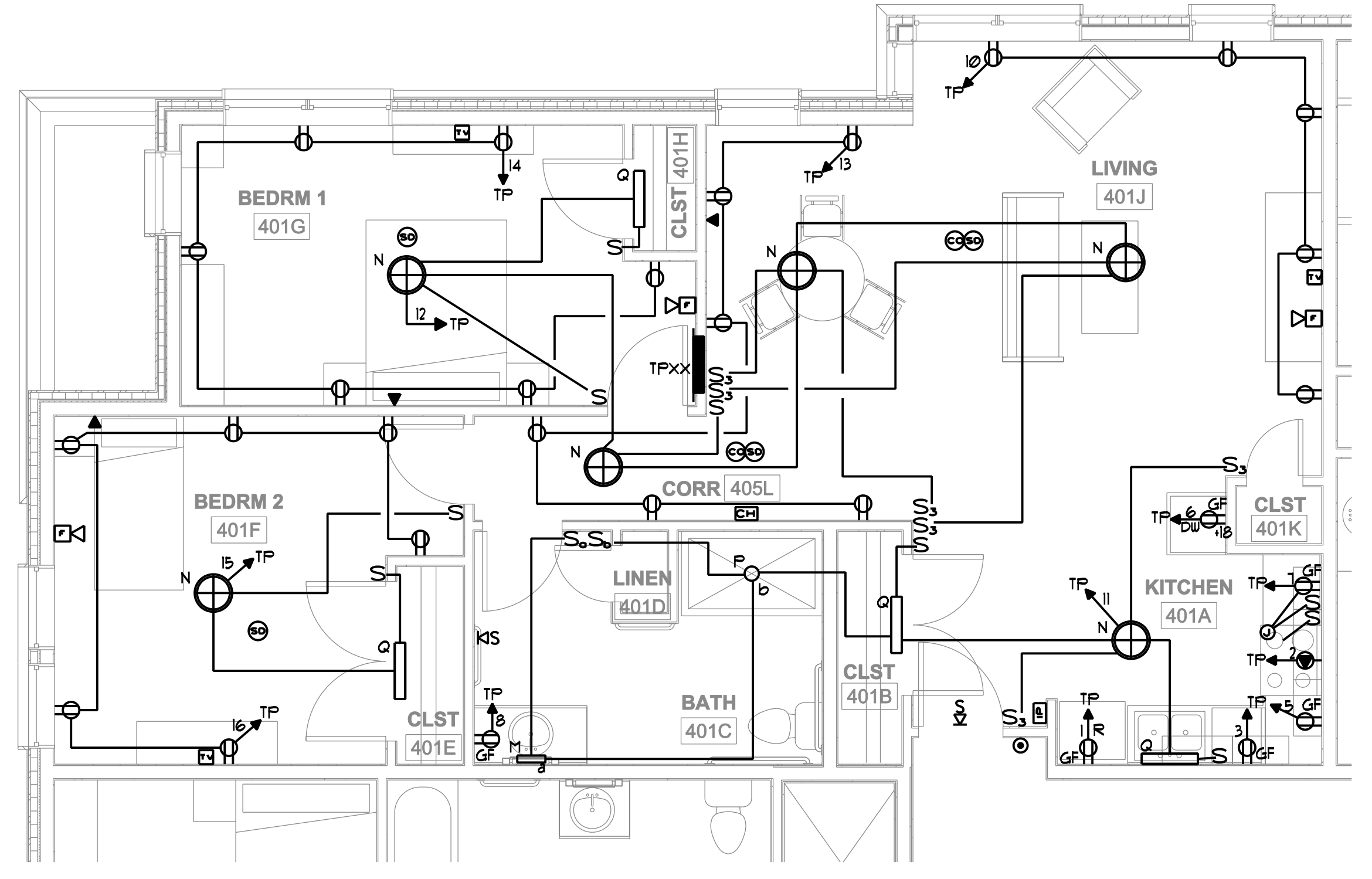
TITLE
TYPICAL UNIT
ELECTRICAL
PLANS

SHEET

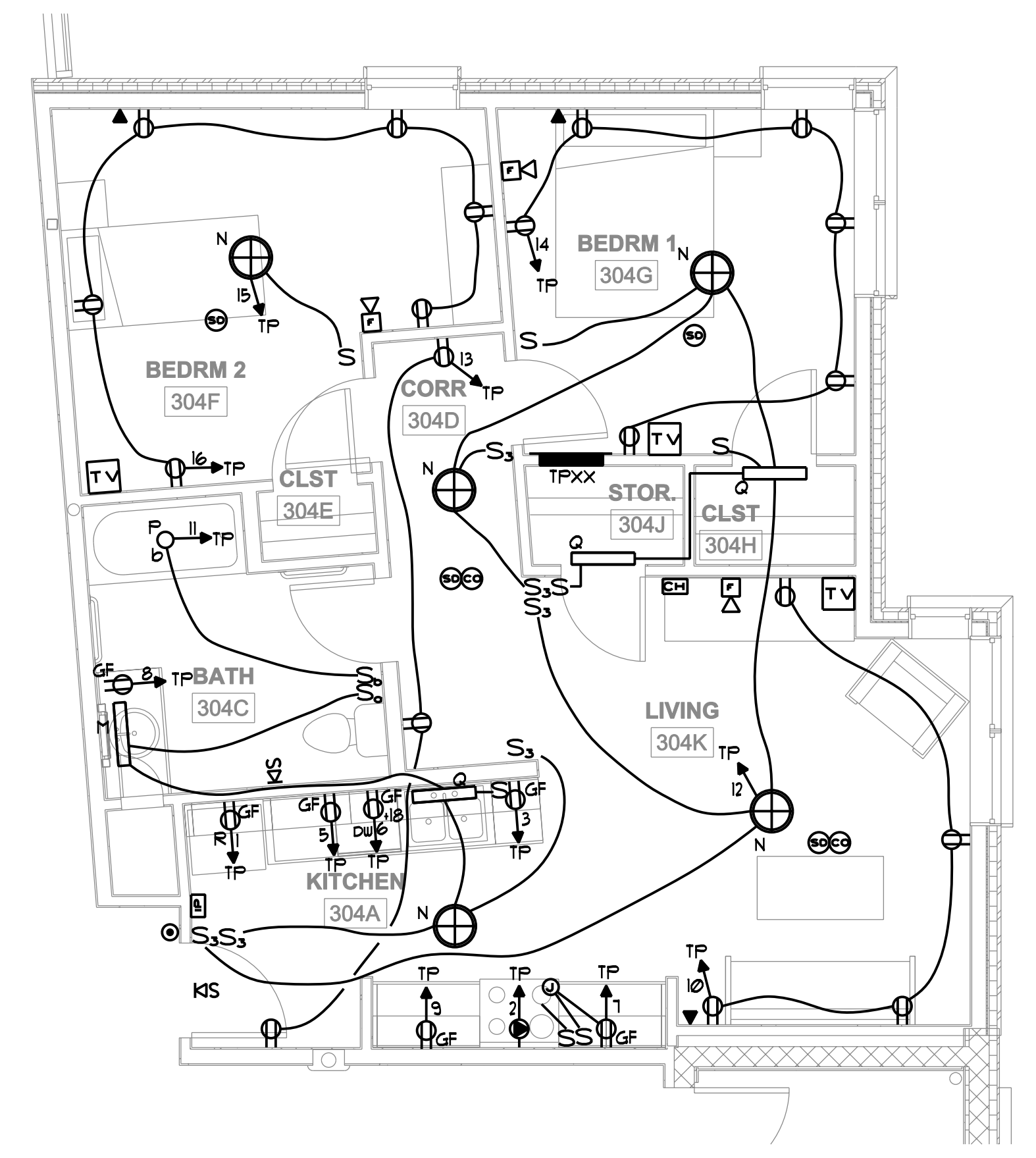
E2.2



6D UNIT 405 (2-A-2)
1/4" = 1'-0"



4D UNIT 401 (2-A-1)
1/4" = 1'-0"



2D UNIT 304, 404 (2-B-4)
1/4" = 1'-0"

PROJECT:		SINGLE PHASE		PANEL DESIGNATION:	
PEARL PLACE 2		PANELBOARD SCHEDULE		TPXX (TYPICAL TENANT PANEL)	
PORTLAND, MAINE					
MAIN LUGS: 100A		VOLTS: 120/208 PHASE: 1		WIRE: 3	
				10,000 A.I.C.	
KVA LOAD					KVA LOAD
REFRIGERATOR	1	20	22	RANGE	1.5
COUNTER OUTLET	3	20	50		
COUNTER OUTLET	5	20	6	DISHWASHER	
COUNTER OUTLET	7	20	8	BATHROOM OUTLETS	
COUNTER OUTLET (SPARE IF NOT USED)	9	20	10	LIVING ROOM OUTLETS	
KITCHEN & BATHROOM LIGHTS	11	20	12	LIVING ROOM AND BEDROOM LIGHTS	
HALL OUTLETS	13	20	14	BEDROOM OUTLETS	x
BEDROOM No.2 LIGHTS	15	20	16	BEDROOM No.2 OUTLETS	x
BEDROOM No.3 LIGHTS	17	20	18	BEDROOM No.3 OUTLETS	x x
SPARE	19	20	20	BATHROOM OUTLETS	
SPARE	21	20	22	SPARE	
SPARE	23	20	24	SPARE	
TOTAL CONN. LOAD:		FEED THRU LUGS		TOTAL DEM. LOAD:	

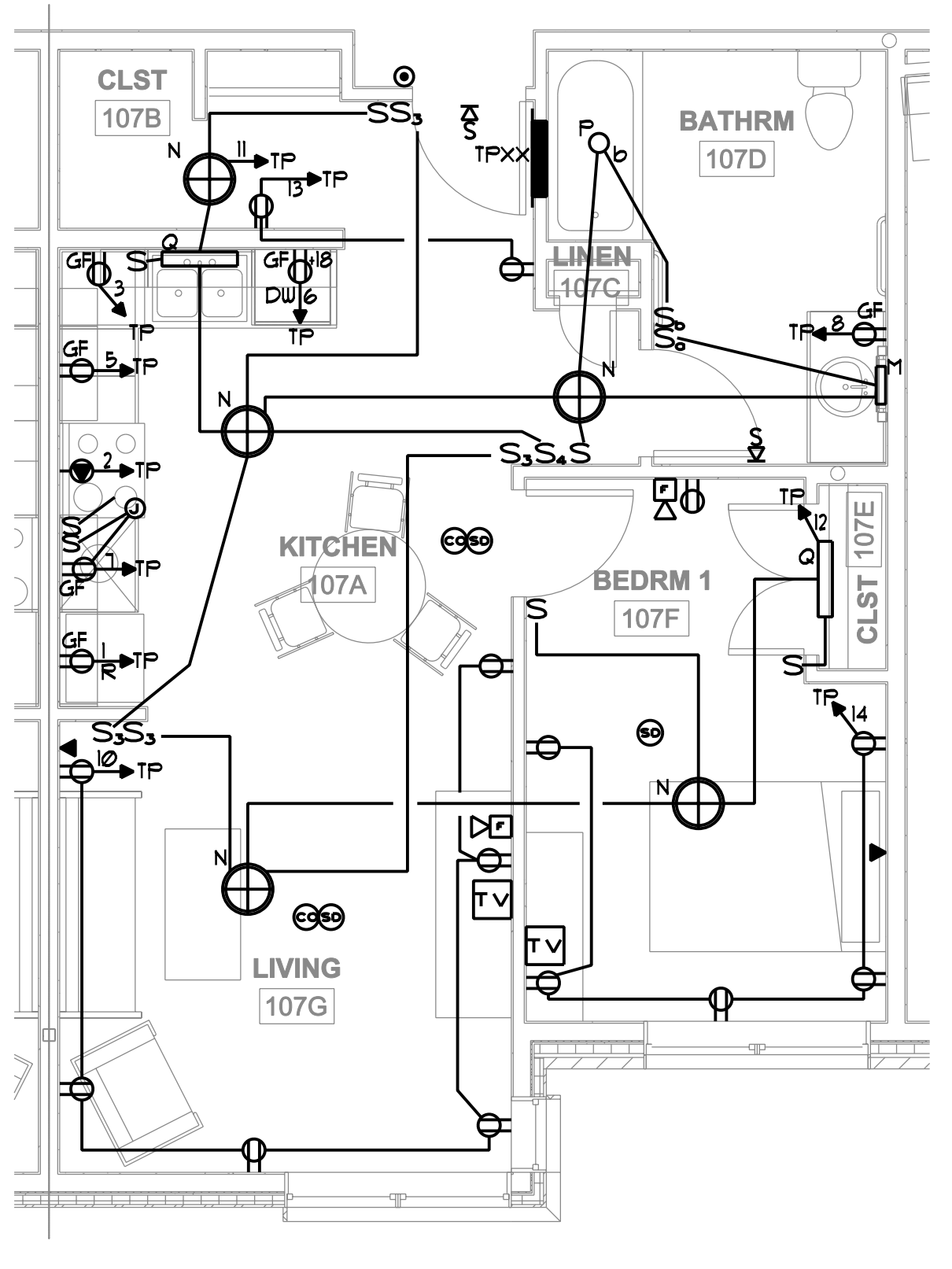
GENERAL NOTES

1. SWITCHES, OUTLETS, TEL JACKS AND TV JACKS TO BE STAGGERED IN COMMON WALLS BETWEEN UNITS - TYPICAL. PROVIDE PUTTY PADS IN INSTANCES WHERE DEVICES CANNOT BE PROPERLY STAGGERED.
2. CONTRACTOR SHALL ROUGH IN BOXES IN ONE OF EACH UNIT TYPE FOR REVIEW IN THE FIELD BY THE OWNER.
3. MINIMUM WIRE SIZE IS #12 AWG. #14 AWG WIRE IS NOT PERMITTED.
4. PROVIDE AIR-VAPOR BARRIER ELECTRICAL BOXES AT EXTERIOR WALLS, LESSECO OR EQUIVALENT.
5. REFER TO ARCHITECTURAL REFLECTED CEILING PLAN FOR LOCATION OF LIGHTING FIXTURES.
6. ALL PRODUCTS OF COMBUSTION DETECTORS (SMOKE DETECTORS) SHALL PROVIDE BOTH AUDIO AND VISUAL ALARMS.
7. ALL WIRING PENETRATING INTO BUILDING THERMAL ENVELOPE COMPONENTS SHALL BE PROPERLY "AIR-SEALED".
8. SWITCHES FOR RANGE HOOD FAN AND LIGHT SHALL BE MOUNTED AT COUNTER HEIGHT.
9. ELECTRICAL PANELS SHALL BE MOUNTED WITH THE TOP BREAKER NOT HIGHER THAN 48" AFF.
10. UNIT THERMOSTATS SHALL BE MOUNTED NOT HIGHER THAN 48" AFF.

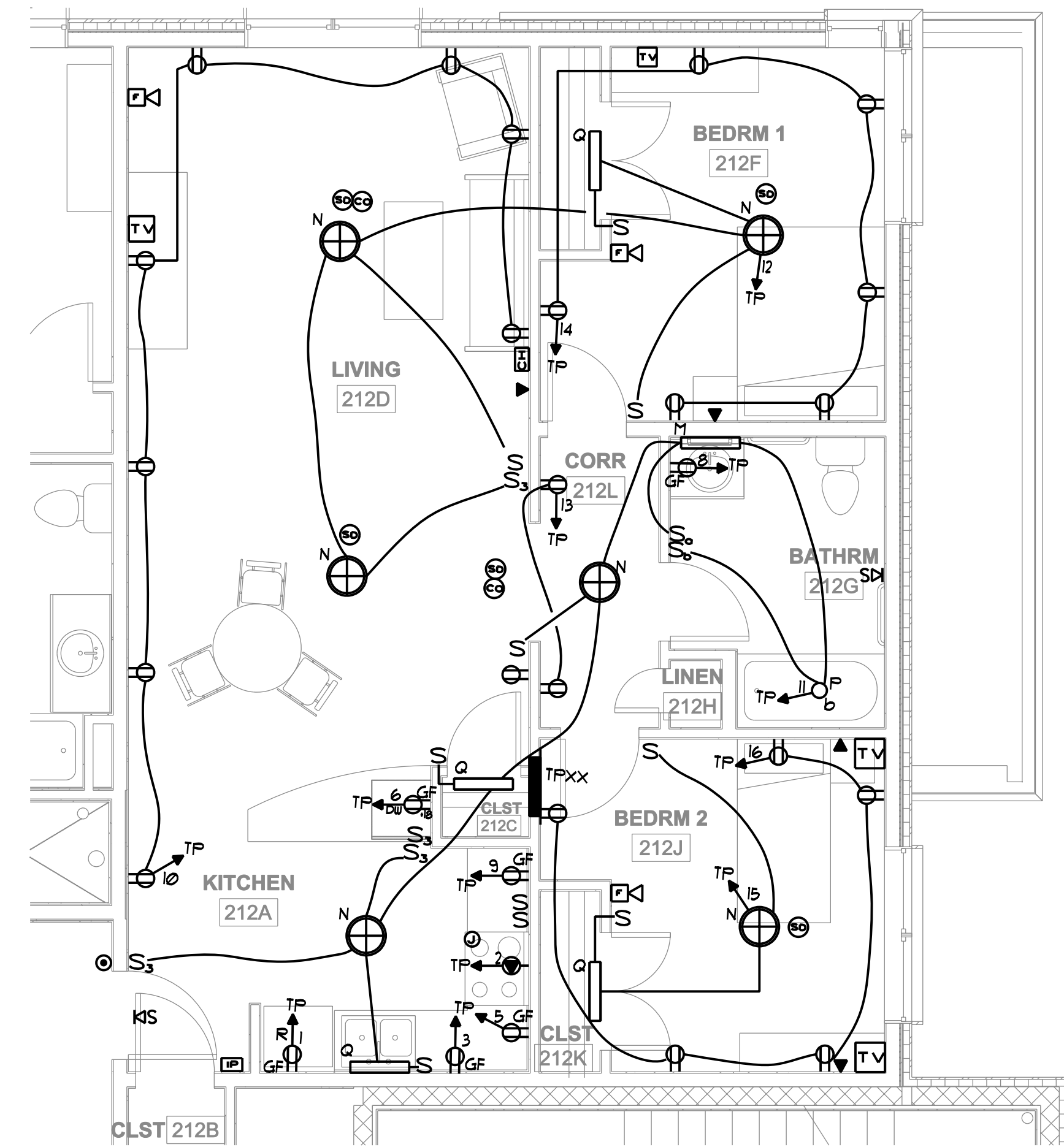
UNIT FIRE ALARM NOTES

1. ON SUPERVISED SYSTEM ACTIVATION ALL SYSTEM AUDIO/VISUAL AND VISUAL ONLY DEVICES SHALL ALARM.
2. WHEN UNIT SMOKE DETECTOR GOES INTO ALARM ALL SINGLE STATION AUDIO/VISUAL AND VISUAL ONLY DEVICES WITHIN THAT UNIT WILL ACTIVATE. THIS WILL NOT ACTIVATE THE ENTIRE BUILDING SYSTEM.
3. THE HORN/STROBES WITHIN THE LIVING UNITS SHALL BE CONNECTED TO THE SUPERVISED CENTRAL SYSTEM.
4. INTERCONNECT ALL 120 VOLT SINGLE STATION SMOKE DETECTORS WITHIN EACH LIVING UNIT. ALL INTERCONNECTED SMOKE DETECTORS SHALL BE ON THE SAME CIRCUIT FOR PROPER OPERATION. REFER TO MANUFACTURER'S INSTALLATION MANUAL AND MOUNT DETECTORS IN ACCORDANCE WITH MANUFACTURER'S RECOMMENDATIONS.
5. CARBON MONOXIDE DETECTORS (CO) IN RESIDENCES SHALL BE INSTALLED AT LEAST 10 FEET FROM THE HEAT SOURCE.
6. INTERCONNECT ALL 120 VOLT CARBON MONOXIDE (CO) DETECTORS WITHIN EACH LIVING UNIT. ALL INTERCONNECTED CO DETECTORS SHALL BE ON THE SAME CIRCUIT FOR PROPER OPERATION. REFER TO MANUFACTURER'S INSTALLATION MANUAL AND MOUNT DETECTORS IN ACCORDANCE WITH MANUFACTURER'S RECOMMENDATIONS. CO DETECTORS SHALL HAVE AN ALARM SOUND THAT IS DIFFERENT THAN THE LIVING UNIT SMOKE DETECTORS AND FIRE ALARM SYSTEM ALARMS.

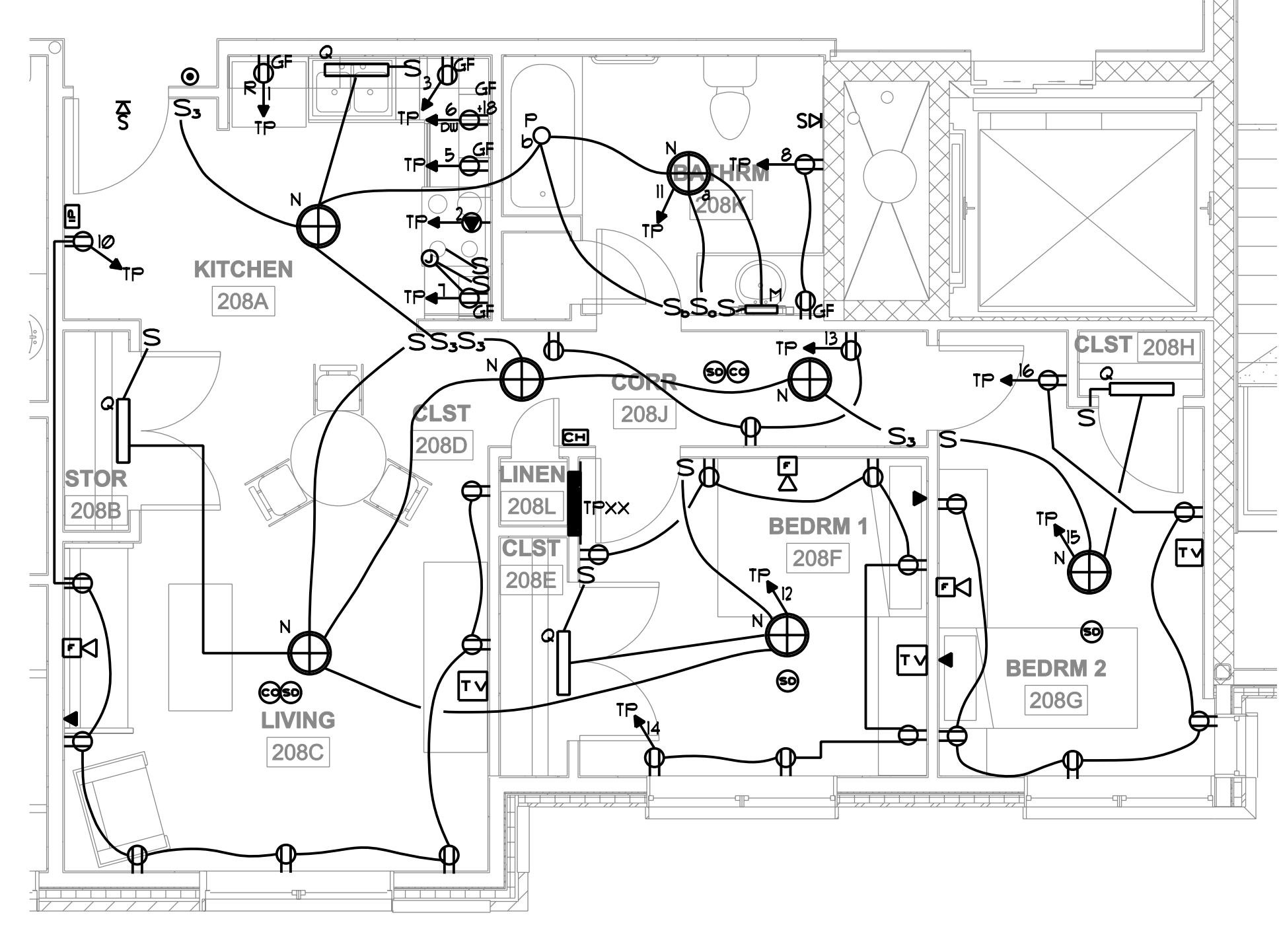
PROVIDE ARC FAULT TYPE CIRCUIT BREAKERS IN ACCORDANCE WITH NEC 210.12(B).
 x PROVIDE FOR 2 BEDROOM UNIT ONLY
 x x PROVIDE FOR 3 BEDROOM UNIT ONLY
 x x x NOT USED IN EVERY UNIT. "SPARE" WHERE NOT USED.
 ◊ USED IN UNITS WITH SECOND BATHROOM ONLY.



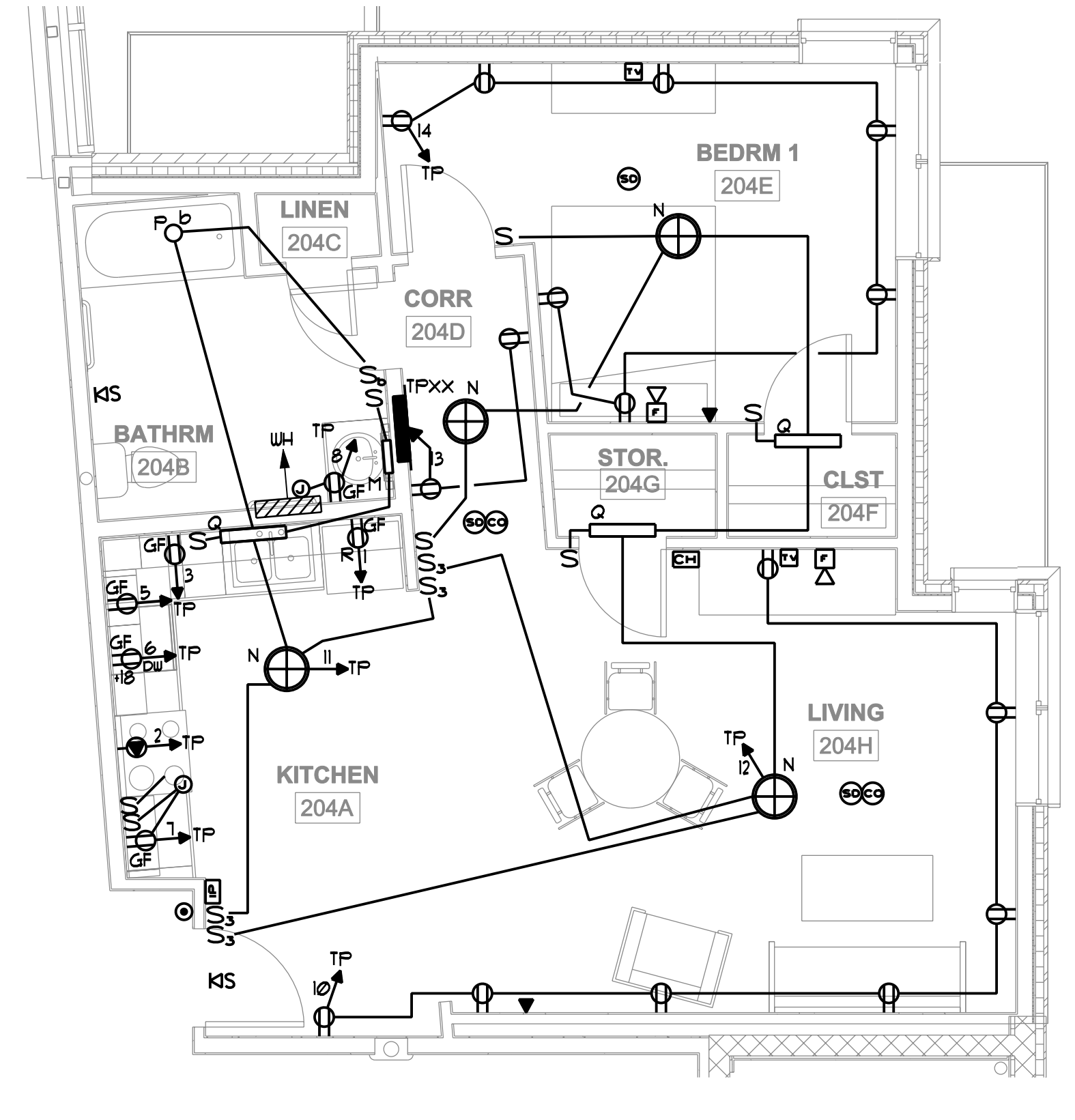
6A UNIT 107, 109, 207, 209, 307, 309, 407, 409 (1-A-1)
1/4" = 1'-0"



6A UNIT 212, 312, 412 (2-B-3)
1/4" = 1'-0"



3A UNIT 208, 308, 408 (2-B-2)
1/4" = 1'-0"



2A UNIT 204 (1-B-3)
1/4" = 1'-0"

