

JOB NO.
10-020

DRWN. CHK.
TWG WSBJR

SCALE:
AS NOTED

ISSUE:
August 3, 2011
For Bid

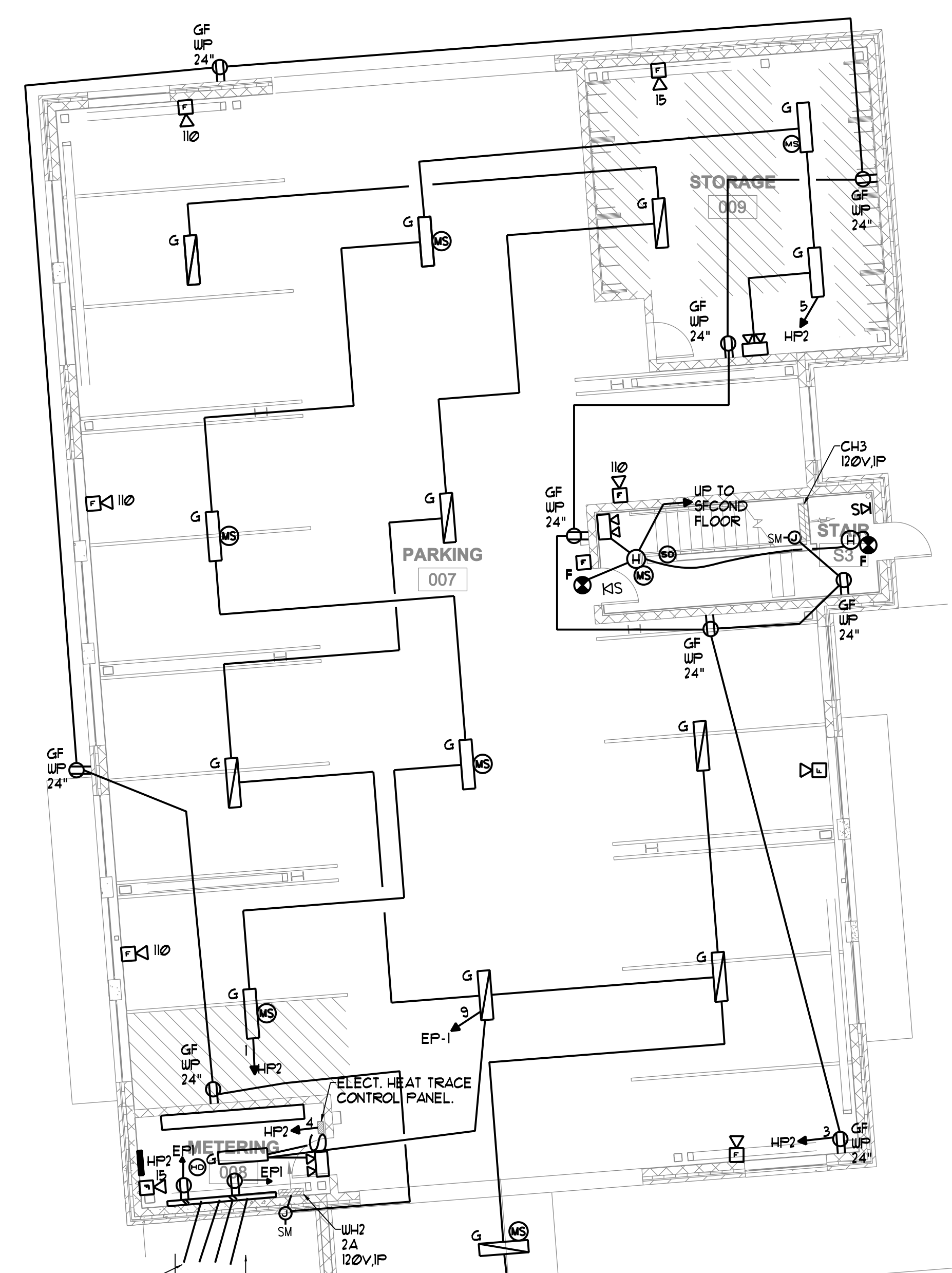
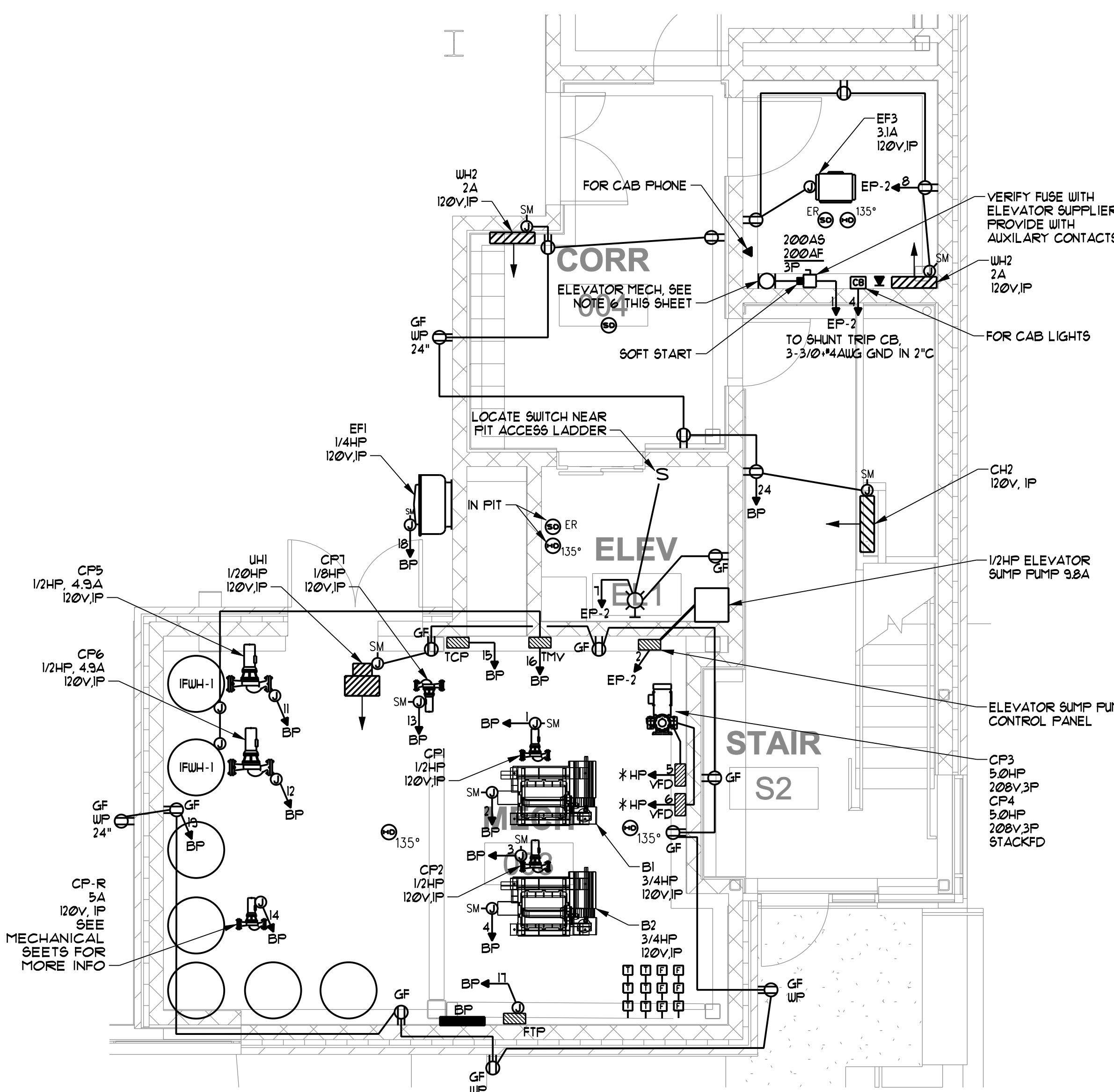
TITLE
PARKING AREA
ELECTRICAL
PLANS

SHEET

E1.1

ELEVATOR NOTES

1. CONNECT ALL REQUIRED SMOKE DETECTORS FOR ELEVATOR RECALL. VERIFY REQUIREMENTS WITH ELEVATOR VENDOR AND LOCAL FIRE DEPARTMENT FOR ELEVATOR SMOKE DETECTORS AND INSTALL IN ACCORDANCE WITH NFPA 72.
2. PROVIDE ELEVATOR POWER SHUTDOWN VIA HEAT DETECTORS IN ELEVATOR SHAFT PIT, AND MACHINE ROOM HEAT DETECTORS ADJACENT TO SPRINKLER HEADS SHALL ALARM BEFORE SPRINKLER HEAD ACTIVATION BASED ON RATE OF TEMPERATURE RISE FOR THE SPRINKLER HEAD. HEAT DETECTORS SHALL BE INSTALLED WITHIN TWO FEET OF THE SPRINKLER HEAD. PROVIDE A CONNECTION TO A SHUNT-TRIP CIRCUIT BREAKER FOR ELEVATOR POWER SHUTDOWN. THE FIRE ALARM SYSTEM SHALL MONITOR SHUNT TRIP CONTROL POWER. COORDINATE WORK WITH THE LOCAL AUTHORITY HAVING JURISDICTION (AHJ).
3. PROVIDE A CONNECTION FROM THE ELEVATOR TAMPER SWITCH TO THE FIRE ALARM CONTROL PANEL (FACP).
4. COMPLY WITH REQUIREMENTS ASMEA 17.1 AND NFPA 72.
5. AUTOMATIC TRANSFER SWITCHES (ATS) MONITORING: PROVIDE 2" MWC-MFOND IN 1/2" C, FROM ELEVATOR CONTROL PANEL TO ATS DRY CONTACTS.
6. CONFIRM ELEVATOR HORSE POWER WITH ELEVATOR MANUFACTURER PRIOR TO INSTALLATION. DESIGN BASED ON 150 HP.



NOTE

CORRIDOR FIXTURES DESIGNATED AS "NL" ARE NIGHT LIGHTS, ALWAYS ON, SWITCHED BY CIRCUIT BREAKER. REMAINING CORRIDOR LIGHTING IS CONTROLLED BY MOTION SENSORS. PROVIDE SENSORS AND RELAYS AS REQUIRED TO OPERATE OCCUPANCY SENSORS.

PARKING AREA ELECTRICAL PLAN

SCALE: 1/8"=1'-0"

TRANSFER SWITCHES MOUNTED AT GENERATOR
ATS-1
ATS-2
UP
LOCKING

