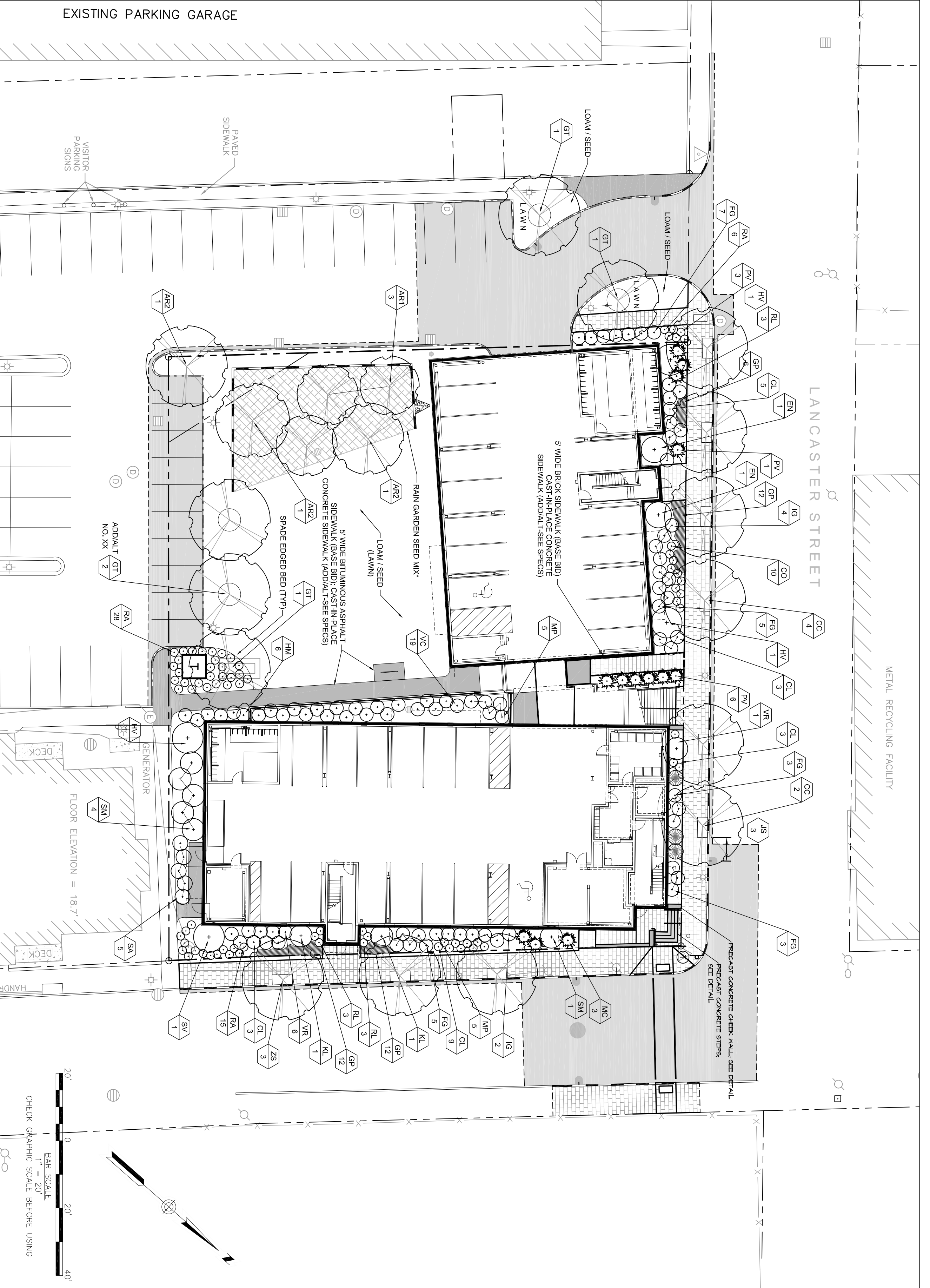


### LANDSCAPE PLAN



### PLANTING NOTES

1. CONTRACTOR SHALL BEGIN MAINTENANCE IMMEDIATELY AFTER PLANTING AND SHALL CONTINUE UNTIL FINAL MAINTENANCE CONTRACTOR SHALL BE RESPONSIBLE FOR ALL PLANTS AND TREES.
2. CONTRACTOR SHALL BE RESPONSIBLE FOR ALL PLANTS AND TREES MAINTENANCE AND PROTECTION THROUGHOUT THE CONSTRUCTION PERIOD. ALL PLANTS AND TREES SHALL BE PROTECTED FROM DAMAGE TO THE PLANTS AND TREES. ALL PLANTS AND TREES SHALL BE PROTECTED FROM DAMAGE TO THE PLANTS AND TREES.
3. CONTRACTOR SHALL BE RESPONSIBLE FOR ALL PLANTS AND TREES MAINTENANCE AND PROTECTION THROUGHOUT THE CONSTRUCTION PERIOD. ALL PLANTS AND TREES SHALL BE PROTECTED FROM DAMAGE TO THE PLANTS AND TREES.
4. CONTRACTOR SHALL BE RESPONSIBLE FOR ALL PLANTS AND TREES MAINTENANCE AND PROTECTION THROUGHOUT THE CONSTRUCTION PERIOD. ALL PLANTS AND TREES SHALL BE PROTECTED FROM DAMAGE TO THE PLANTS AND TREES.
5. CONTRACTOR SHALL BE RESPONSIBLE FOR ALL PLANTS AND TREES MAINTENANCE AND PROTECTION THROUGHOUT THE CONSTRUCTION PERIOD. ALL PLANTS AND TREES SHALL BE PROTECTED FROM DAMAGE TO THE PLANTS AND TREES.
6. CONTRACTOR SHALL BE RESPONSIBLE FOR ALL PLANTS AND TREES MAINTENANCE AND PROTECTION THROUGHOUT THE CONSTRUCTION PERIOD. ALL PLANTS AND TREES SHALL BE PROTECTED FROM DAMAGE TO THE PLANTS AND TREES.
7. CONTRACTOR SHALL BE RESPONSIBLE FOR ALL PLANTS AND TREES MAINTENANCE AND PROTECTION THROUGHOUT THE CONSTRUCTION PERIOD. ALL PLANTS AND TREES SHALL BE PROTECTED FROM DAMAGE TO THE PLANTS AND TREES.
8. CONTRACTOR SHALL BE RESPONSIBLE FOR ALL PLANTS AND TREES MAINTENANCE AND PROTECTION THROUGHOUT THE CONSTRUCTION PERIOD. ALL PLANTS AND TREES SHALL BE PROTECTED FROM DAMAGE TO THE PLANTS AND TREES.
9. CONTRACTOR SHALL BE RESPONSIBLE FOR ALL PLANTS AND TREES MAINTENANCE AND PROTECTION THROUGHOUT THE CONSTRUCTION PERIOD. ALL PLANTS AND TREES SHALL BE PROTECTED FROM DAMAGE TO THE PLANTS AND TREES.
10. CONTRACTOR SHALL BE RESPONSIBLE FOR ALL PLANTS AND TREES MAINTENANCE AND PROTECTION THROUGHOUT THE CONSTRUCTION PERIOD. ALL PLANTS AND TREES SHALL BE PROTECTED FROM DAMAGE TO THE PLANTS AND TREES.
11. CONTRACTOR SHALL BE RESPONSIBLE FOR ALL PLANTS AND TREES MAINTENANCE AND PROTECTION THROUGHOUT THE CONSTRUCTION PERIOD. ALL PLANTS AND TREES SHALL BE PROTECTED FROM DAMAGE TO THE PLANTS AND TREES.
12. CONTRACTOR SHALL BE RESPONSIBLE FOR ALL PLANTS AND TREES MAINTENANCE AND PROTECTION THROUGHOUT THE CONSTRUCTION PERIOD. ALL PLANTS AND TREES SHALL BE PROTECTED FROM DAMAGE TO THE PLANTS AND TREES.
13. CONTRACTOR SHALL BE RESPONSIBLE FOR ALL PLANTS AND TREES MAINTENANCE AND PROTECTION THROUGHOUT THE CONSTRUCTION PERIOD. ALL PLANTS AND TREES SHALL BE PROTECTED FROM DAMAGE TO THE PLANTS AND TREES.
14. CONTRACTOR SHALL BE RESPONSIBLE FOR ALL PLANTS AND TREES MAINTENANCE AND PROTECTION THROUGHOUT THE CONSTRUCTION PERIOD. ALL PLANTS AND TREES SHALL BE PROTECTED FROM DAMAGE TO THE PLANTS AND TREES.
15. CONTRACTOR SHALL BE RESPONSIBLE FOR ALL PLANTS AND TREES MAINTENANCE AND PROTECTION THROUGHOUT THE CONSTRUCTION PERIOD. ALL PLANTS AND TREES SHALL BE PROTECTED FROM DAMAGE TO THE PLANTS AND TREES.
16. CONTRACTOR SHALL BE RESPONSIBLE FOR ALL PLANTS AND TREES MAINTENANCE AND PROTECTION THROUGHOUT THE CONSTRUCTION PERIOD. ALL PLANTS AND TREES SHALL BE PROTECTED FROM DAMAGE TO THE PLANTS AND TREES.
17. CONTRACTOR SHALL BE RESPONSIBLE FOR ALL PLANTS AND TREES MAINTENANCE AND PROTECTION THROUGHOUT THE CONSTRUCTION PERIOD. ALL PLANTS AND TREES SHALL BE PROTECTED FROM DAMAGE TO THE PLANTS AND TREES.
18. CONTRACTOR SHALL BE RESPONSIBLE FOR ALL PLANTS AND TREES MAINTENANCE AND PROTECTION THROUGHOUT THE CONSTRUCTION PERIOD. ALL PLANTS AND TREES SHALL BE PROTECTED FROM DAMAGE TO THE PLANTS AND TREES.

### PLANT SCHEDULE

QTY	SYM	BOTANICAL NAME	COMMON NAME	SIZE	REMARKS	NATIVE SPECIES
3	ARI	ACER RUBRUM	RED MAPLE	2-2 1/2" CAL.	B18	✓
3	AC2	ACER RUBRUM	RED MAPLE	2-2 1/2" CAL.	B18	✓
6	CC	CARYA CAROLINIANA	AMERICAN HONEYLOC	2-2 1/2" CAL.	B18	✓
3	GT	QUERCUS TRIACANTHOS NERSK	THORNLESS HONEYLOC	2-2 1/2" CAL.	B18	✓
2	ZS	ZELKOVA SERVATA	JAPANESE ELDER	2-2 1/2" CAL.	B18	✓
22	CL	CLETHRA ALNIFOLIA COMPACTA	SHRUBS, GARDEN/COVERS / ORNAMENTAL, GRASSES/PERENNIALS	16-24"	✓	✓
1	CO	COTONEASTER ARGENTATA	CREANBERY COTONEASTER	16-24"	✓	✓
2	BN	BANKSYA CAMPANULATA	RED-EIN BANKSYA	4-8"	B18	✓
23	FG	FORSYTHIA GARDENI	ORANGE FORSYTHIA	24-30"	B18	✓
42	GP	GALTHERIA INDOCAENENS	ANTIRRHINUM	1 GAL.	CONT	✓
6	HM	HYDRANGEA MACROPHYLLA	ENDLESS SUMMER HYDRANGEA	5-6"	B18	✓
3	HV	HANAKELLA VIRGINIANA	COMMON KITCHAZEL	3-4"	B18	✓
1	IG	ILEX GLABRA COMPACTA	INHERENT	30-36"	B18	✓
3	JG	JUNIPERUS SCOPULORUM NICHITA BLUE	NICHITA BLUE JUNIPER	3-6"	B18	✓
3	KL	KALMIA LATIFOLIA	MOUNTAIN LABEL	30-36"	CONT	✓
3	KC	MECANTHUS BERGOLIANUS	MADRID GRASS	3 GAL.	CONT	✓
1	NP	NERICA PENSYLVANICA	NORTHERN BAYBERRY	24-30"	B18	✓
1	PA	PANICUM VIRGATUM HEAVY HEAL	SWITCH GRASS	3 GAL.	CONT	✓
44	RL	RHODODENDRON X LACTIFLORUM	FRAGRANT SIKANG	1.5 GAL.	B18	✓
3	SA	SALIX BACCHARIS VANA	HILSON SPOONWOOD	16-24"	B18	✓
6	SH	SPARGANGLER PALMUM	DIAPER ACUTE PALM	16-24"	B18	✓
1	SV	SPRING FERN PALMUM	DIAPER ACUTE PALM	24-30"	B18	✓
1	VC	VACCINIUM CORNUBOSUM	COMMON LILAC	5-6"	B18	✓
7	VR	VIBURNUM BENTHOPIANUM	HIGHBUSH BLUEBERRY	30-36"	B18	✓
1425	SP	RAIN GARDEN SEED MIX	RAIN GARDEN SEED MIX	30-36"	B18	✓

NOTE: ALL SUBSTITUTIONS SHALL MEET USDA NATIVE PLANT REQUIREMENTS AND MUST BE APPROVED BY LANDSCAPE ARCHITECT

BID SET

SHEET  
L1.0

ISSUE  
AUGUST 3, 2011

TITLE  
LANDSCAPE PLAN

SCALE:  
AS SHOWN

DATE  
10-20

DRWN  
CHK  
TC

Pearl Place II ~ 184 Pearl Street  
PORTLAND, MAINE



WOODARD & CURRAN  
41 Hutchins Drive  
Portland, Maine 04112  
800.426.4262 | www.woodardcurran.com  
COMMITMENT & INTEGRITY DRIVE RESULTS

CARROLL ASSOCIATES  
LANDSCAPE ARCHITECTS  
2970 CENTENNIAL AVENUE SUITE 200  
PORTLAND, MAINE 04106  
F. 207.772.7123

