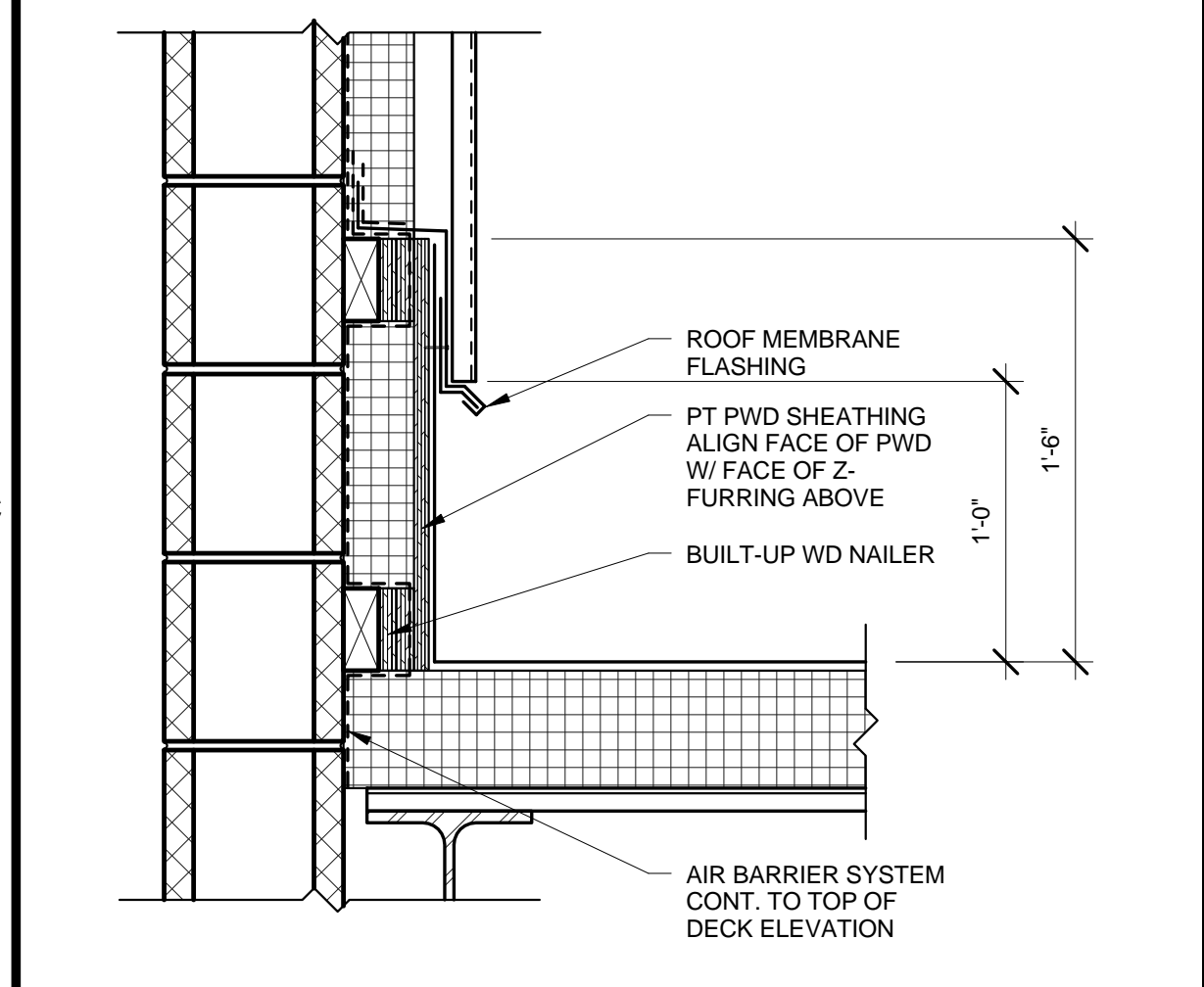
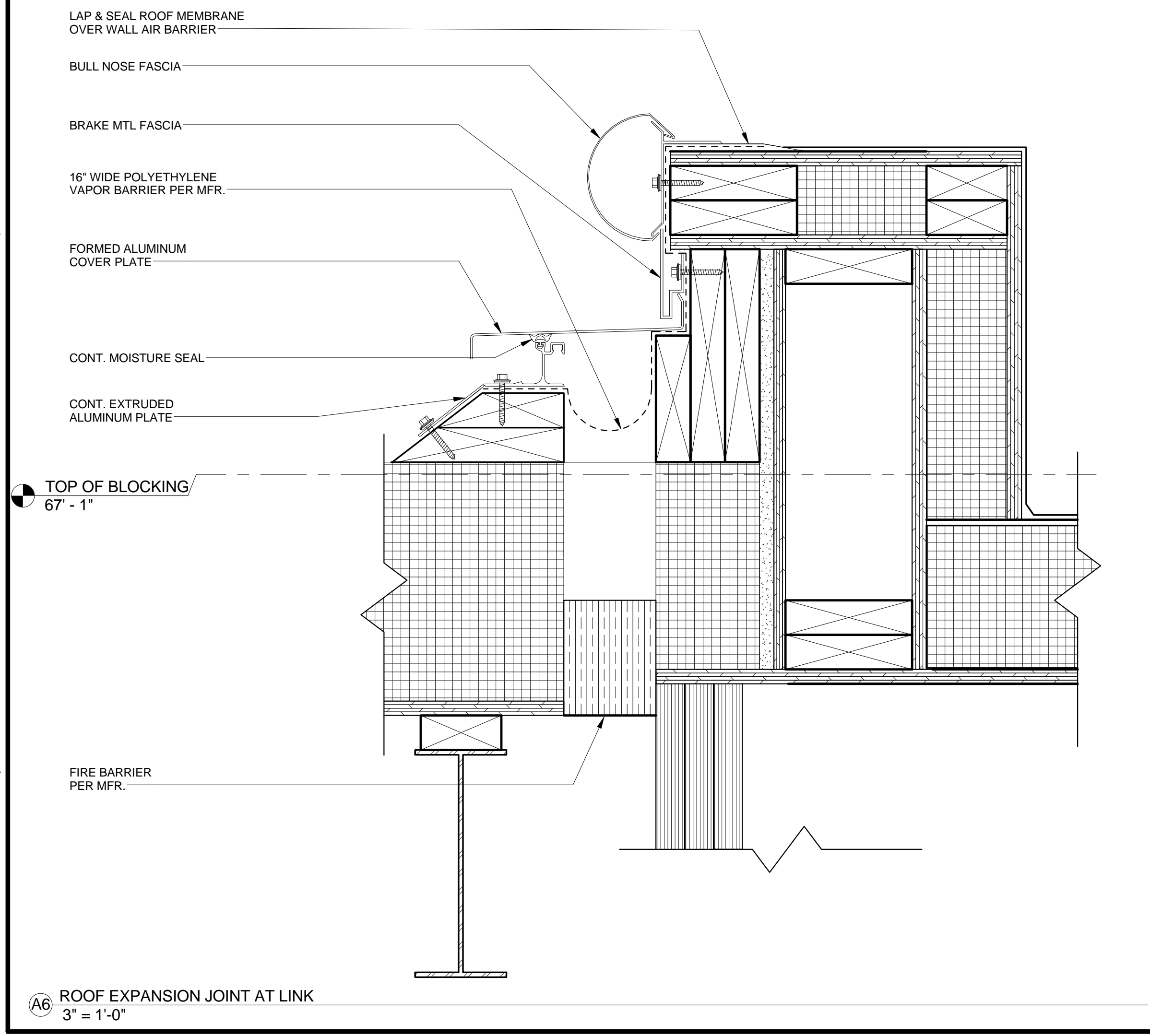


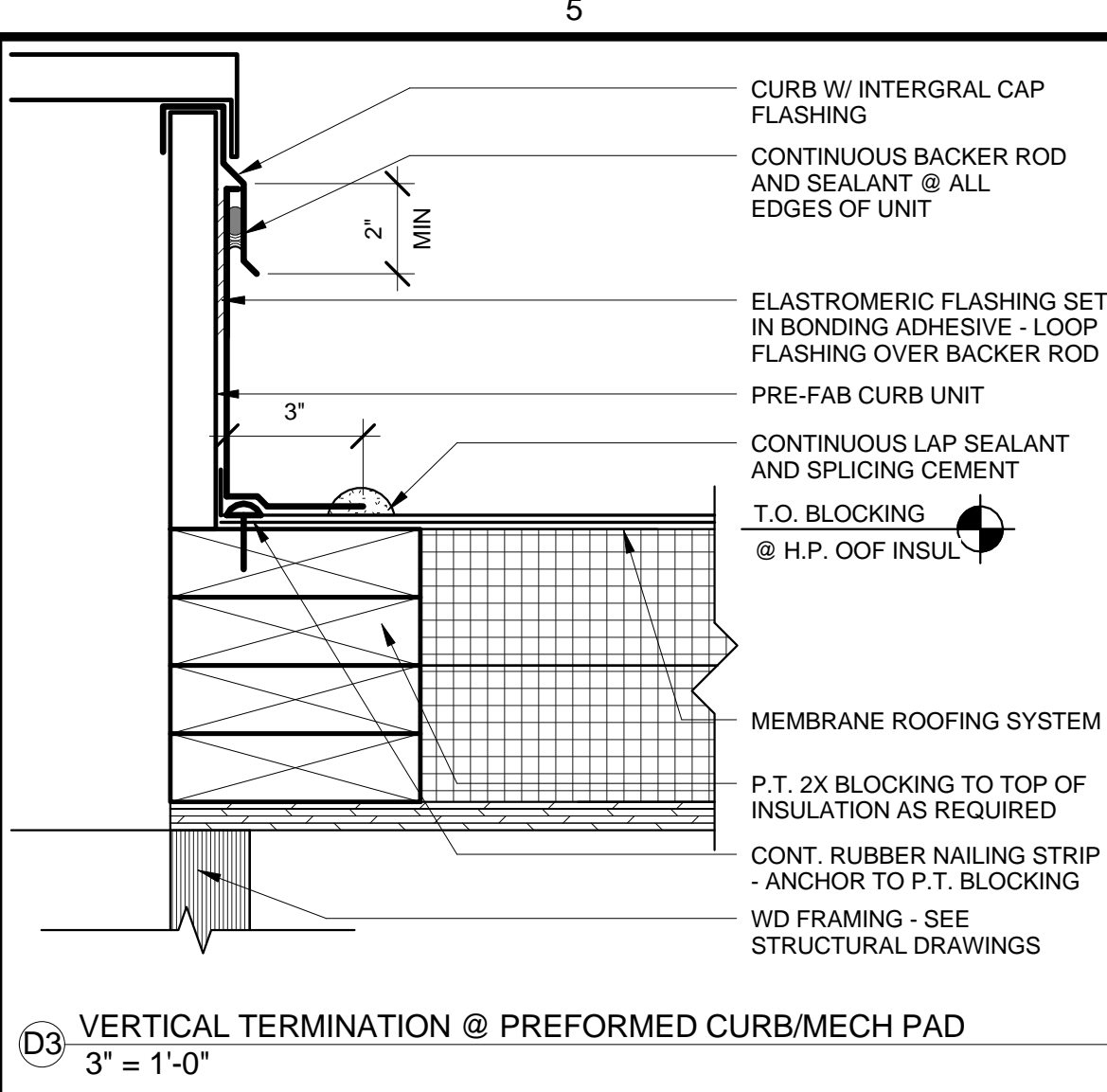
D6 CORNICE PROFILE - TYPE 3
3' = 1'-0"



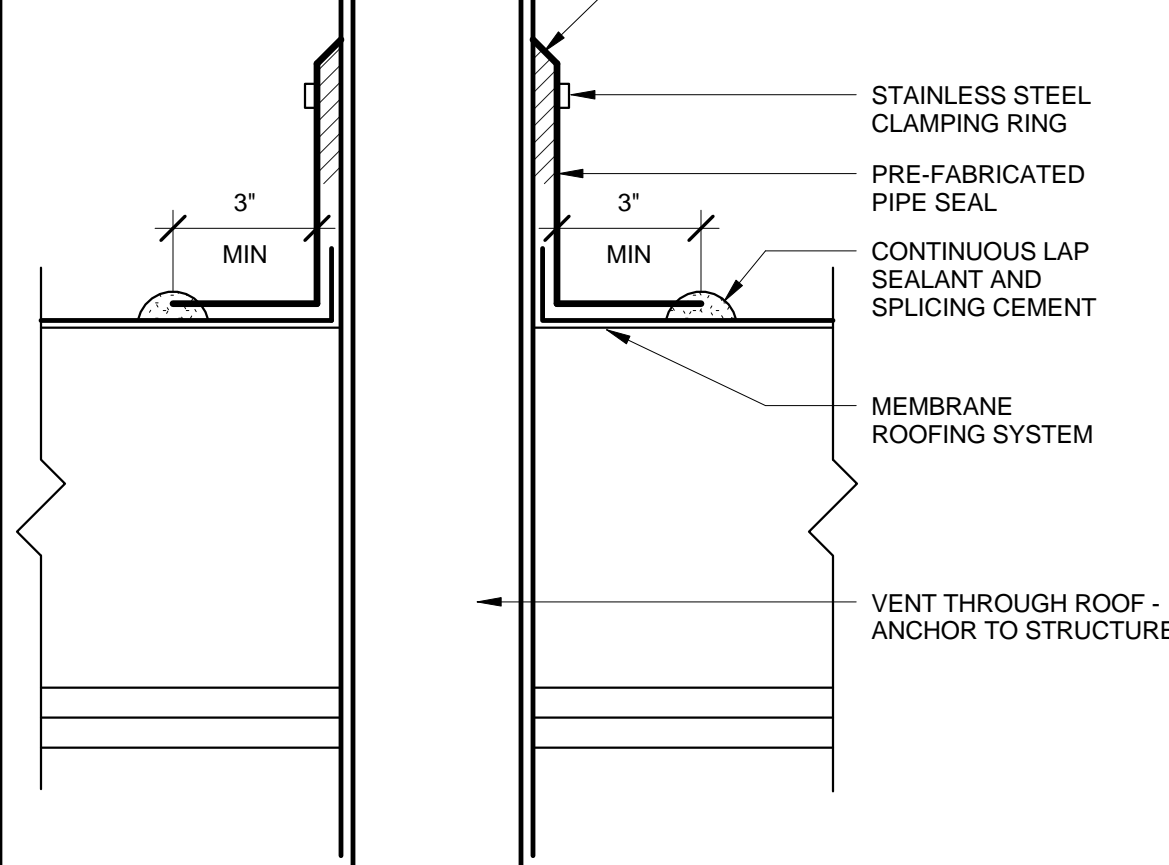
C6 METAL PANEL AT ROOF
1 1/2' = 1'-0"



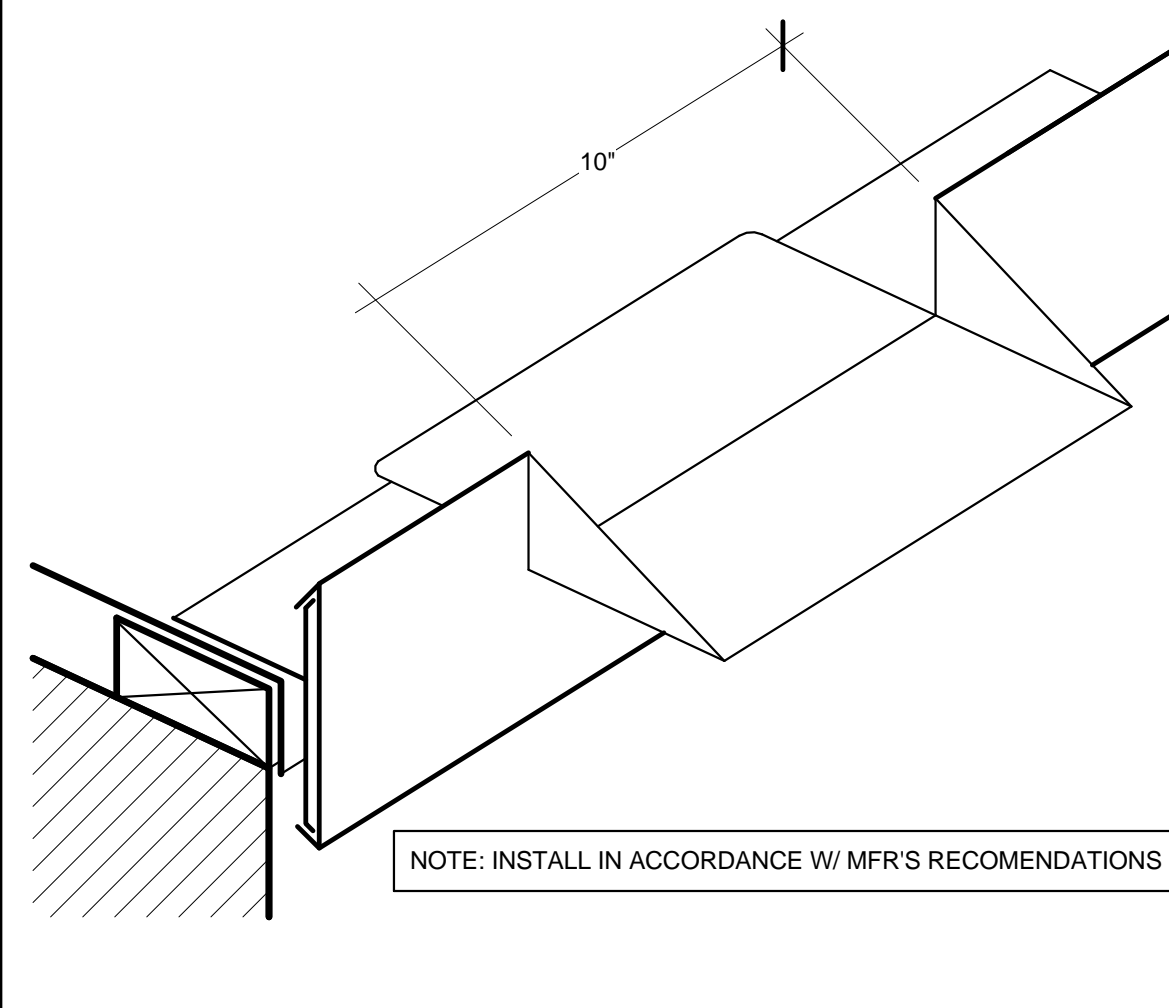
A6 ROOF EXPANSION JOINT AT LINK
3' = 1'-0"



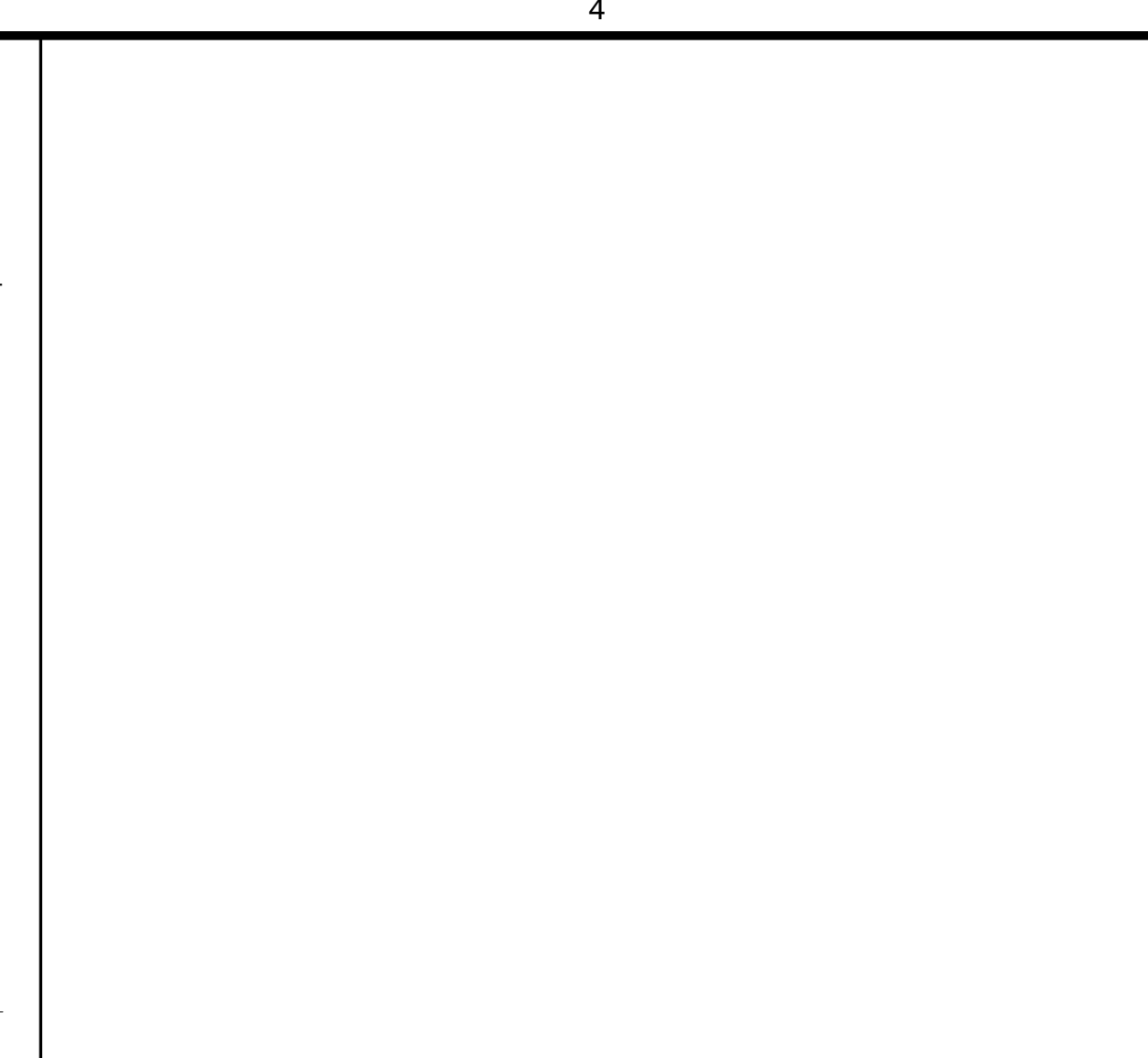
D3 VERTICAL TERMINATION @ PREFORMED CURB/MECH PAD
3' = 1'-0"



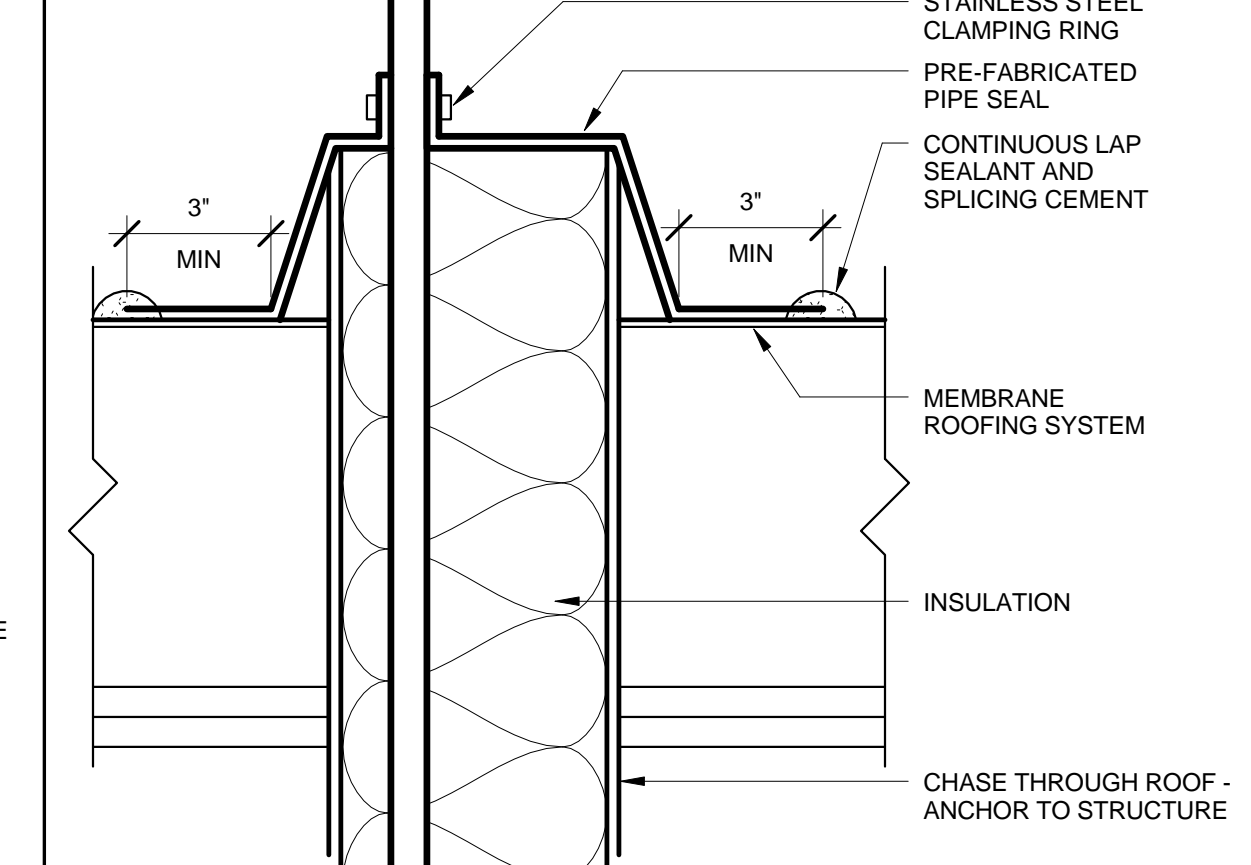
D5 DTL @ VENT / FLAT ROOF
3' = 1'-0"



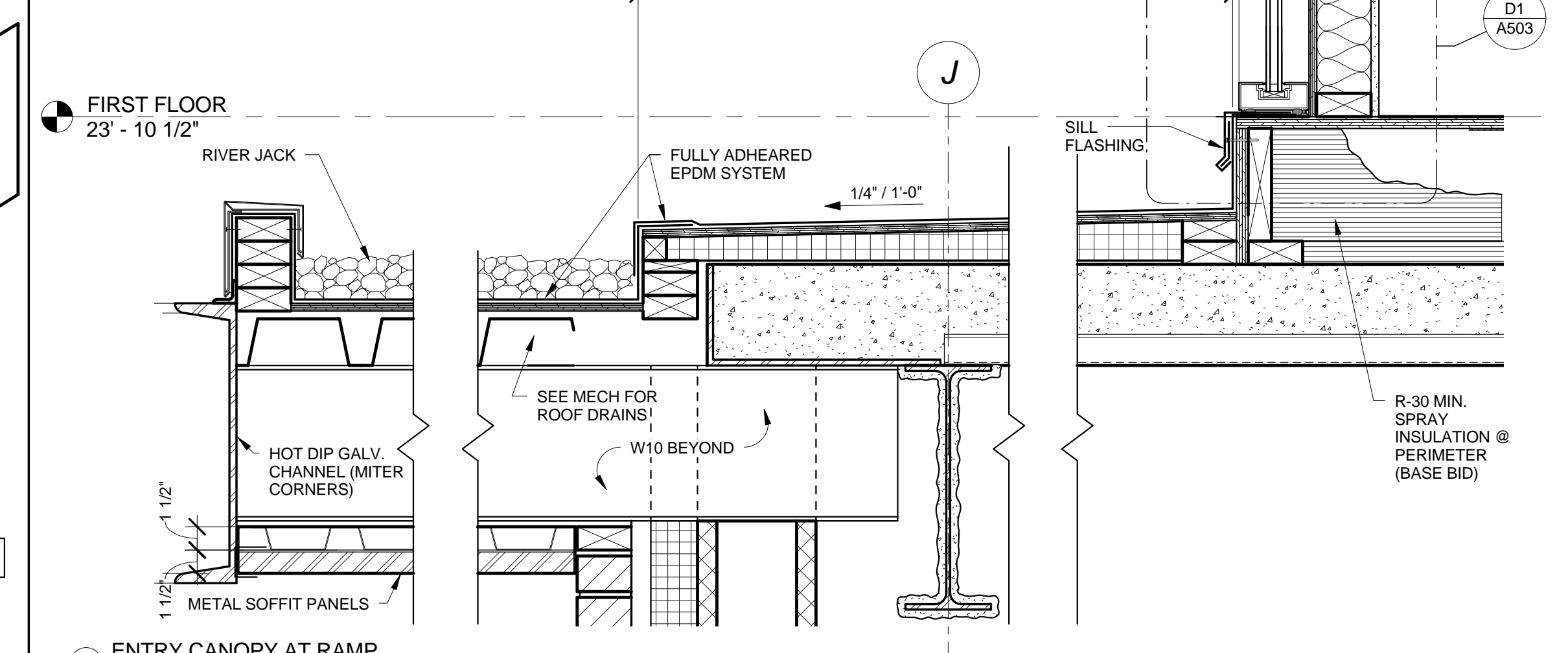
C5 OVERFLOW SCUPPER DETAIL AT EPDM ROOFS
3' = 1'-0"



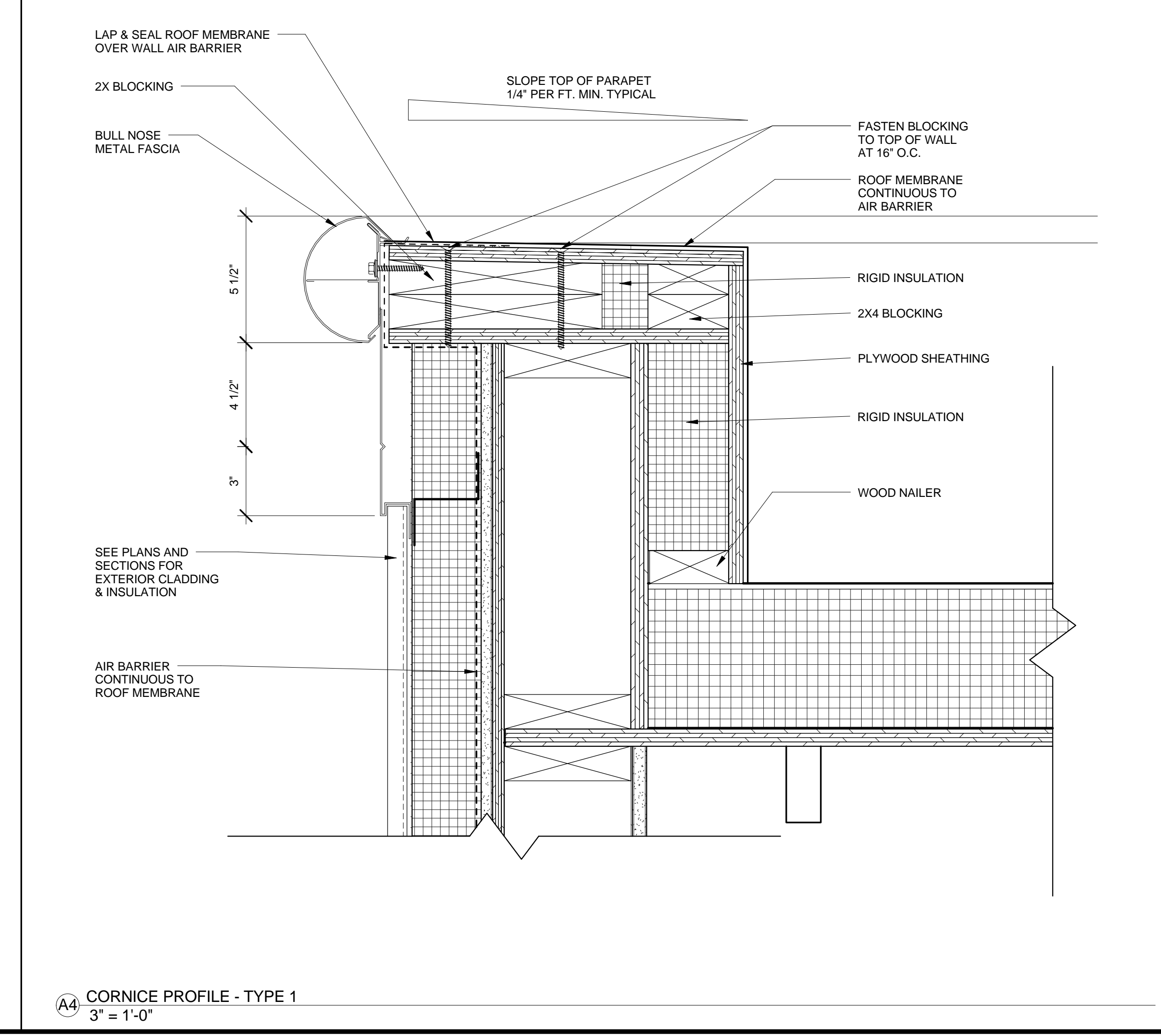
E3 TYP. MEMBRANE @ ROOF DRAIN
3' = 1'-0"



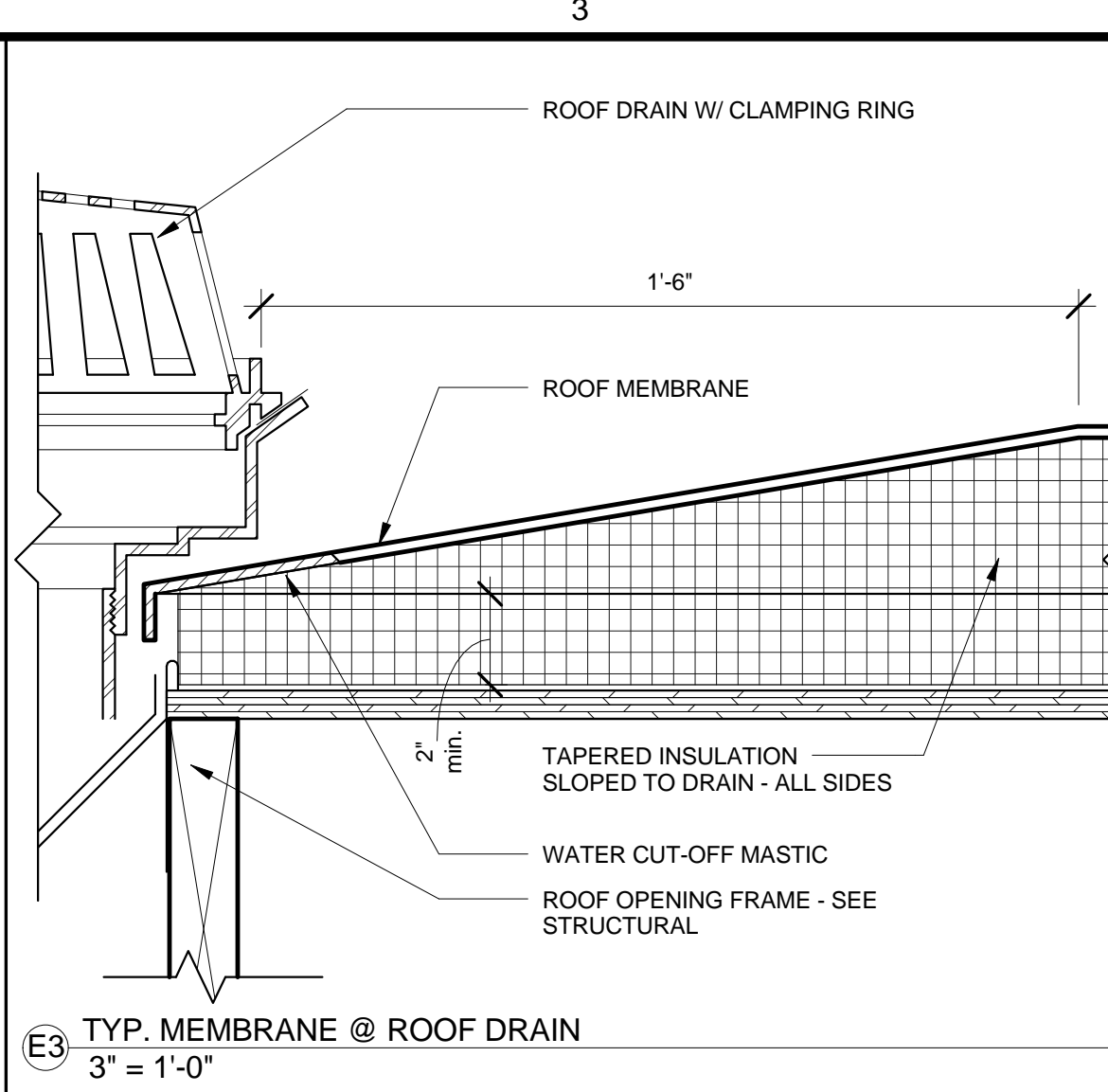
D4 CHASE FOR MECHANICAL PENETRATION
3' = 1'-0"



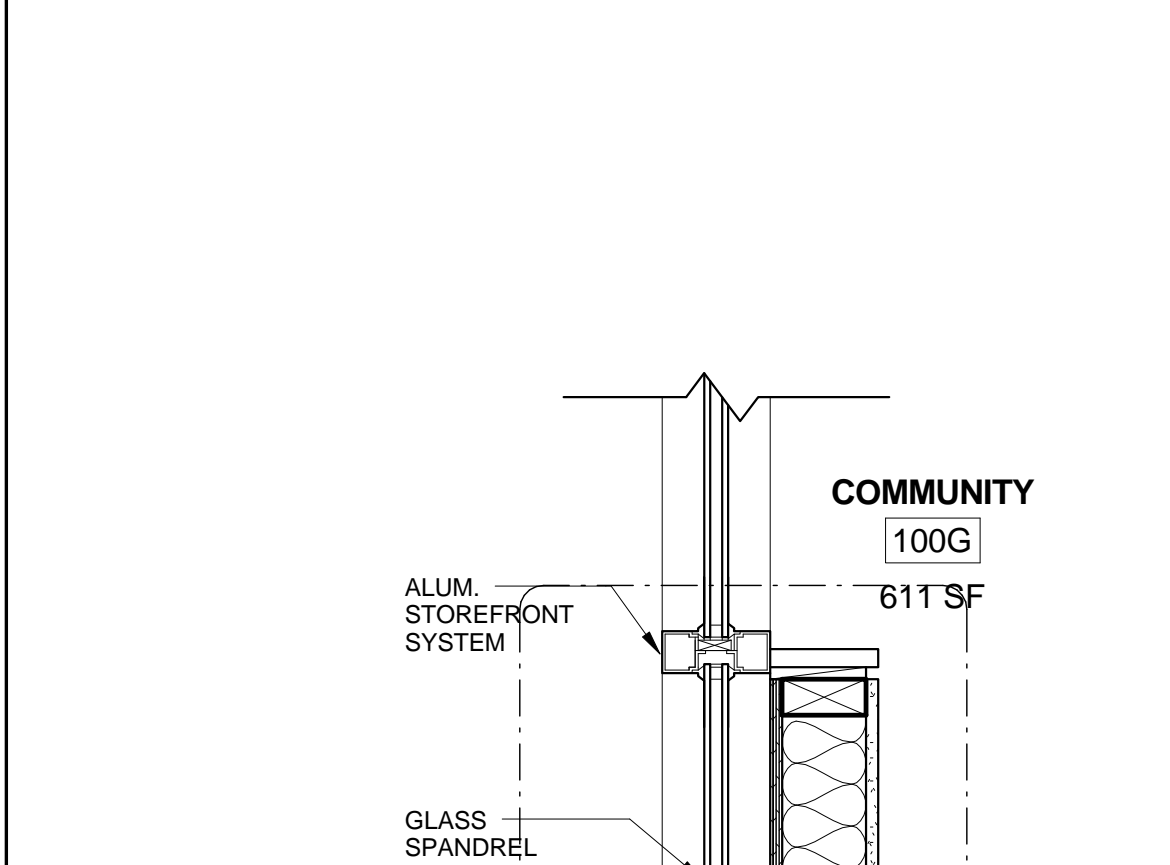
C4 ENTRY CANOPY AT RAMP
1 1/2' = 1'-0"



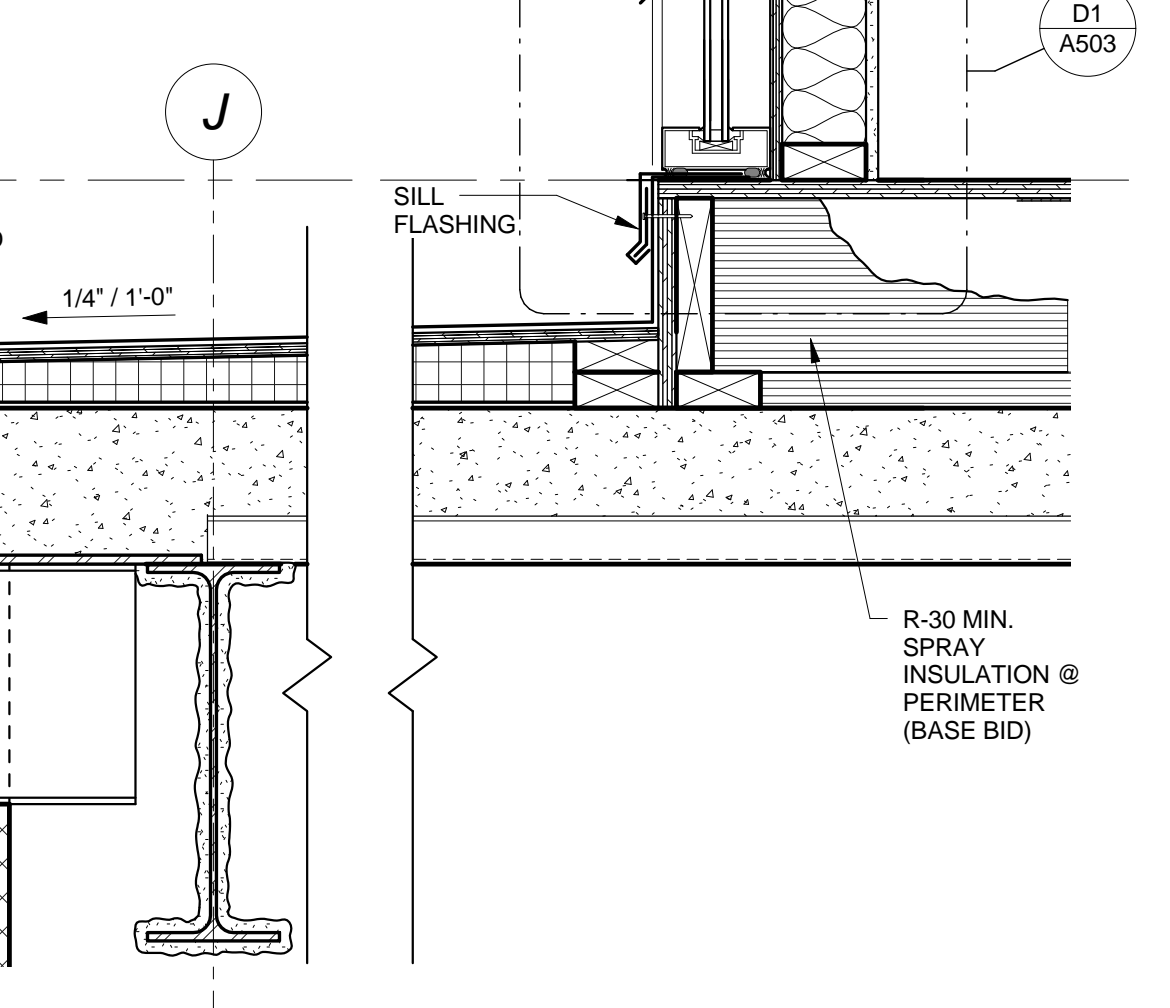
A4 CORNICE PROFILE - TYPE 1
3' = 1'-0"



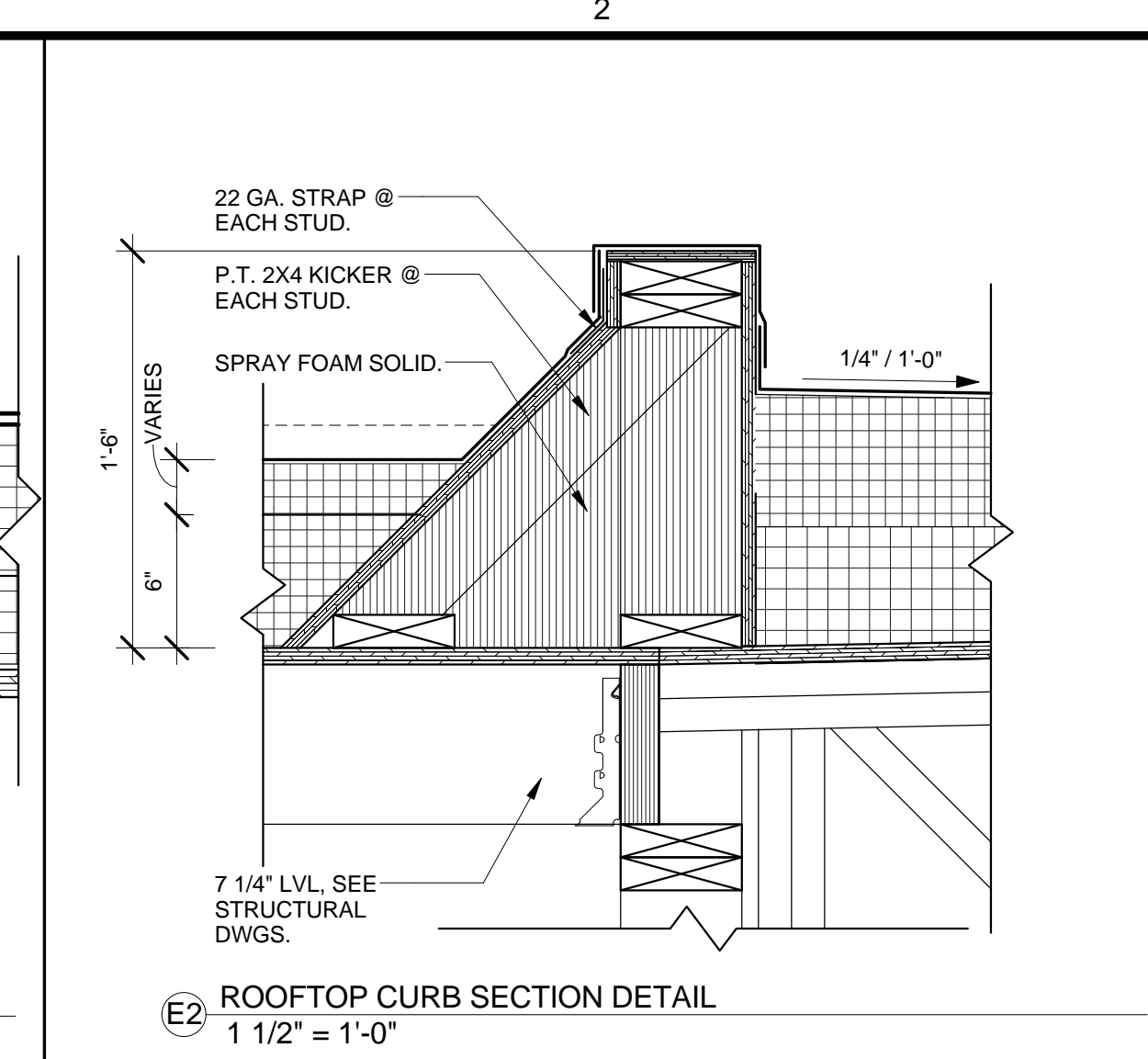
E2 TYP. MEMBRANE @ ROOF DRAIN
3' = 1'-0"



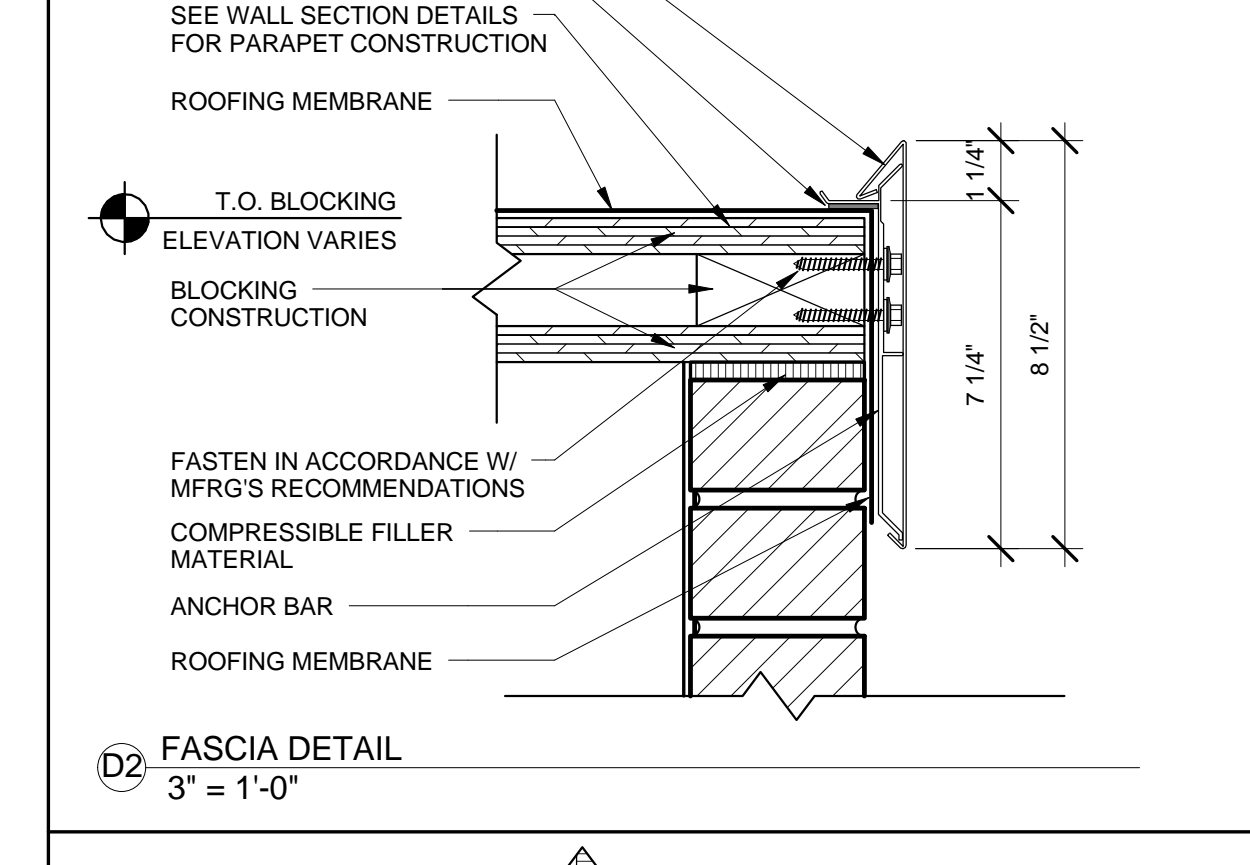
D2 FASCIA DETAIL
3' = 1'-0"



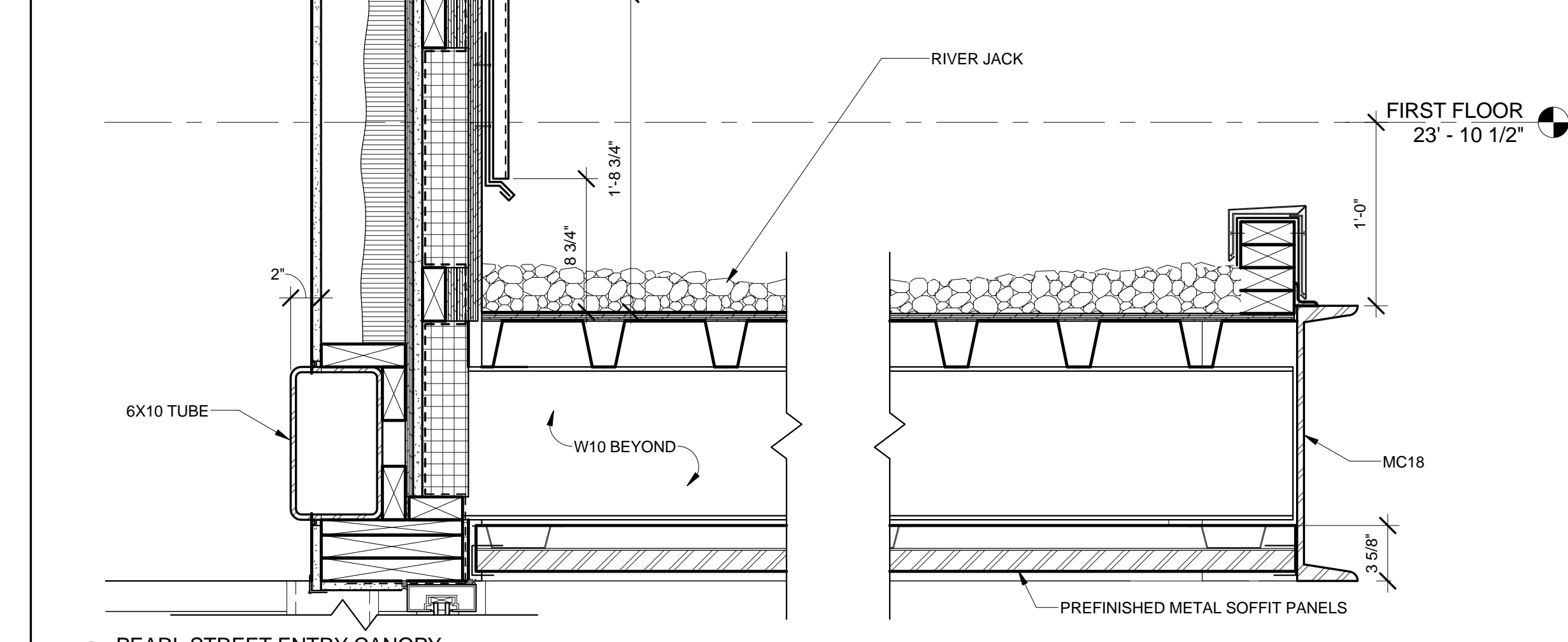
C2 PEARL STREET ENTRY CANOPY
1 1/2' = 1'-0"



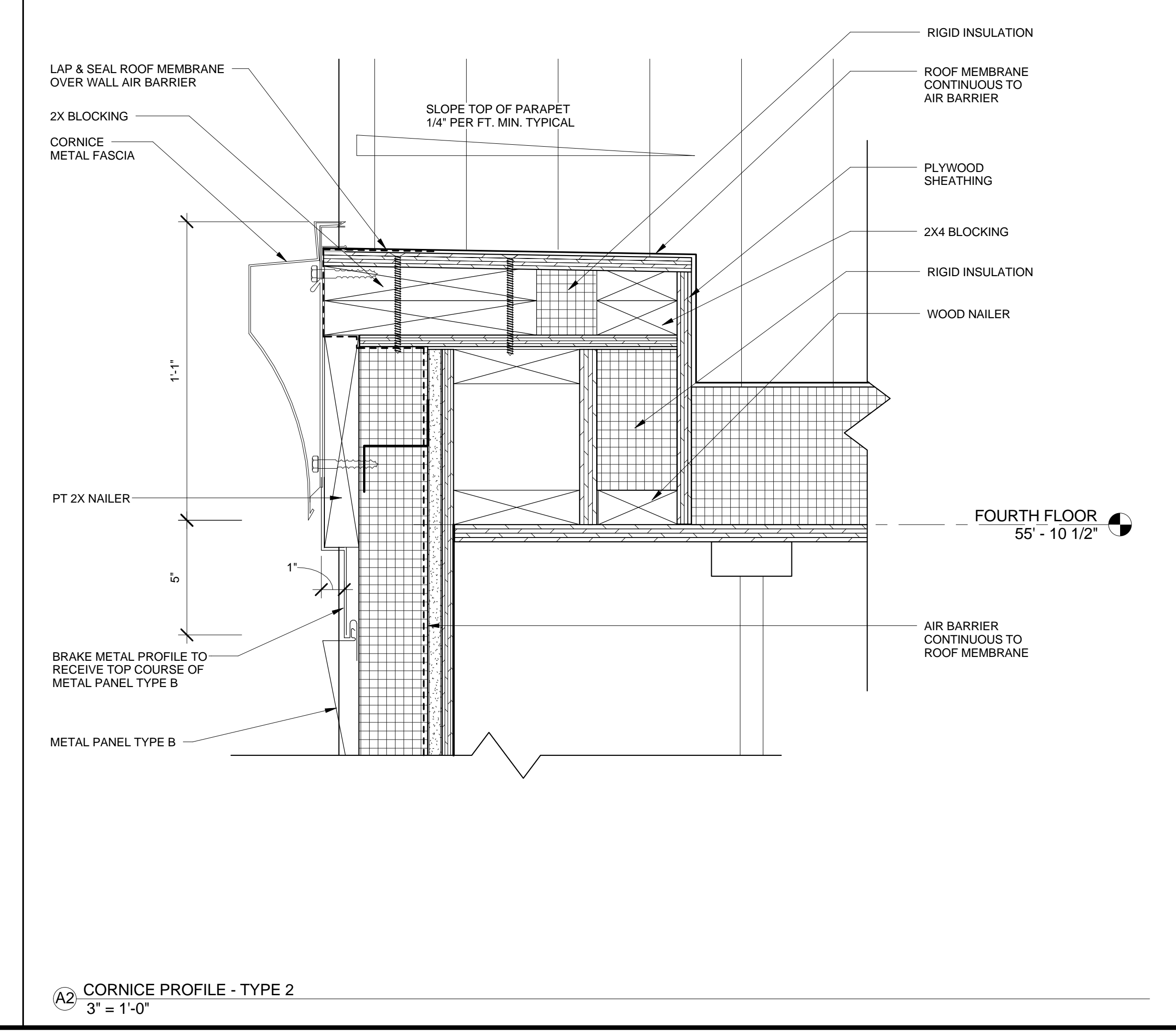
E2 ROOFTOP CURB SECTION DETAIL
1 1/2' = 1'-0"



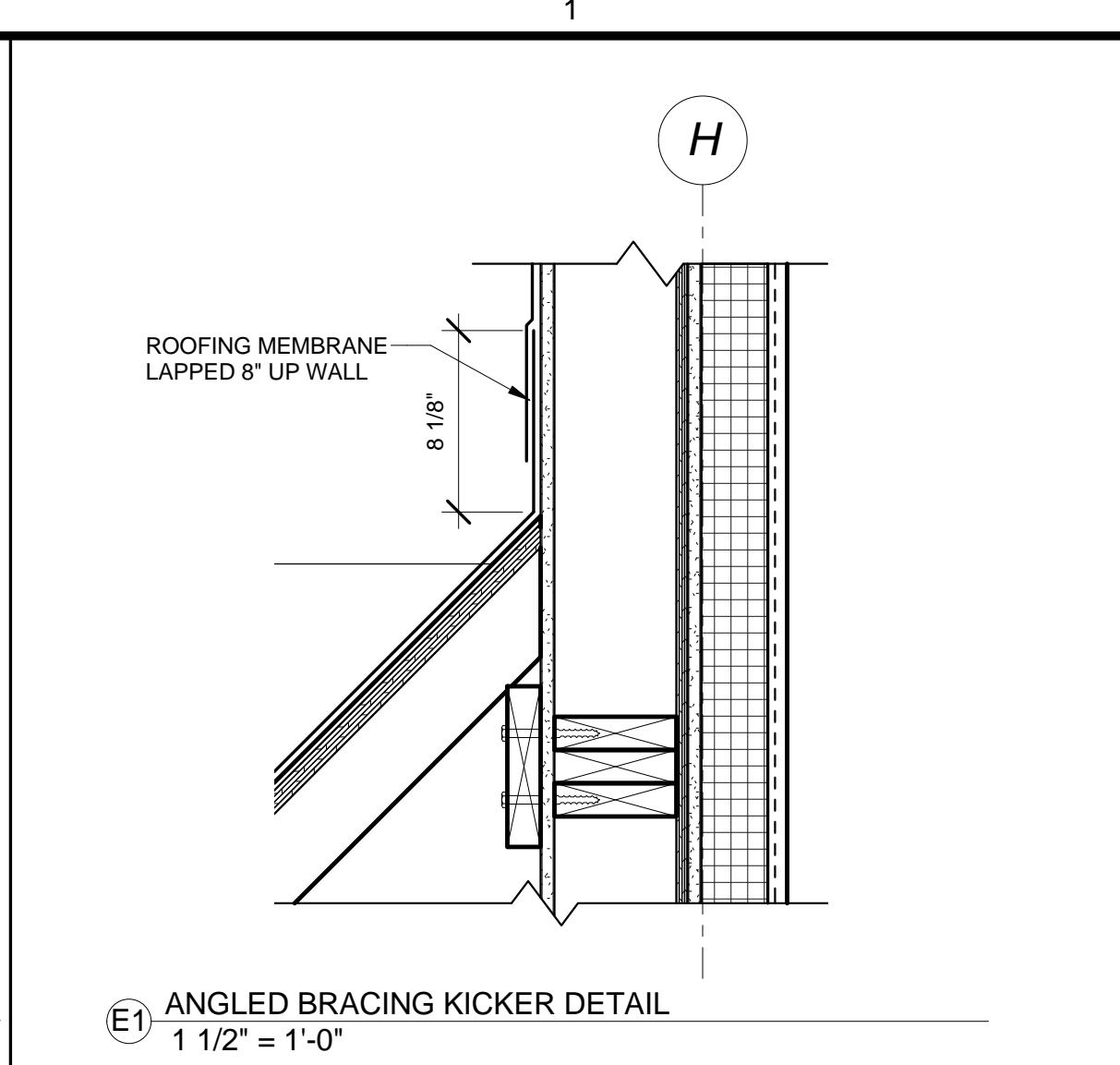
D2 FASCIA DETAIL
3' = 1'-0"



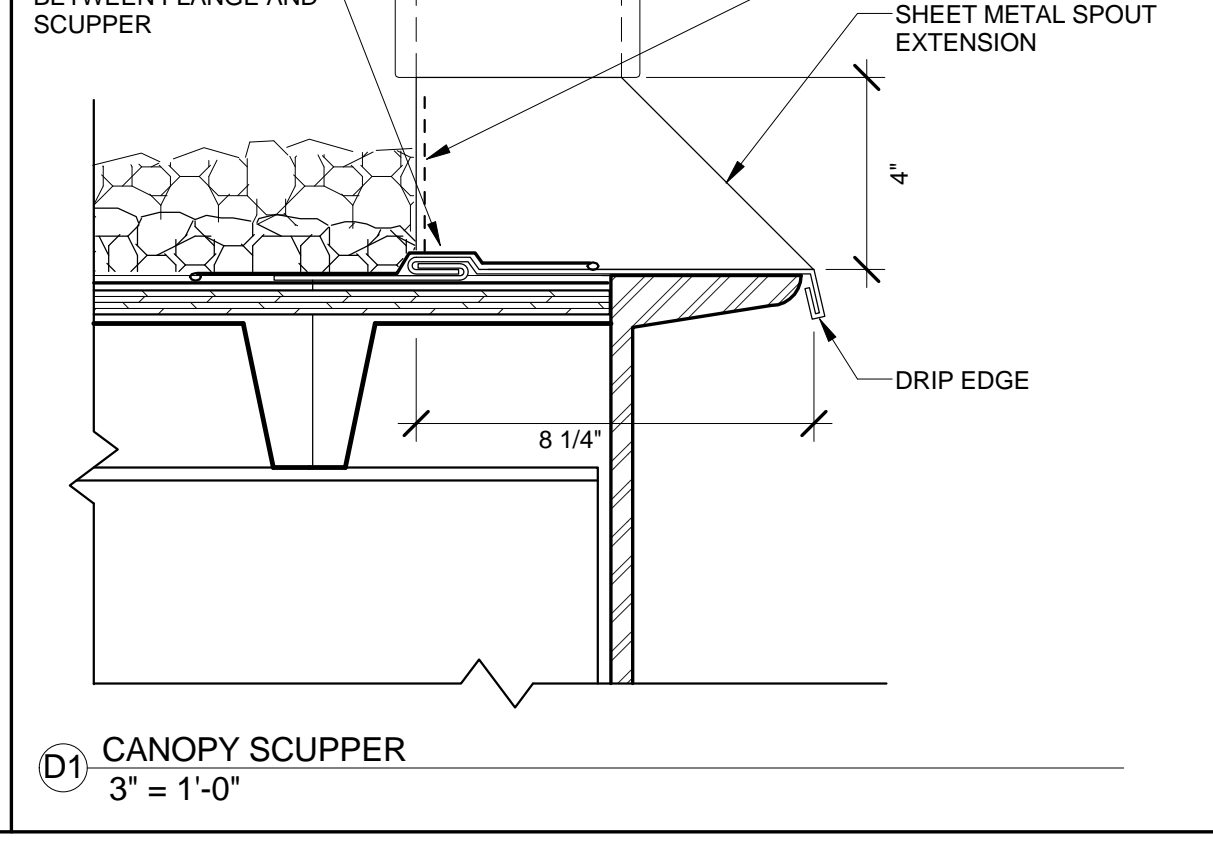
C2 PEARL STREET ENTRY CANOPY
1 1/2' = 1'-0"



A2 CORNICE PROFILE - TYPE 2
3' = 1'-0"



E1 ANGLED BRACING KICKER DETAIL
1 1/2' = 1'-0"



D1 CANOPY SCUPPER
3' = 1'-0"