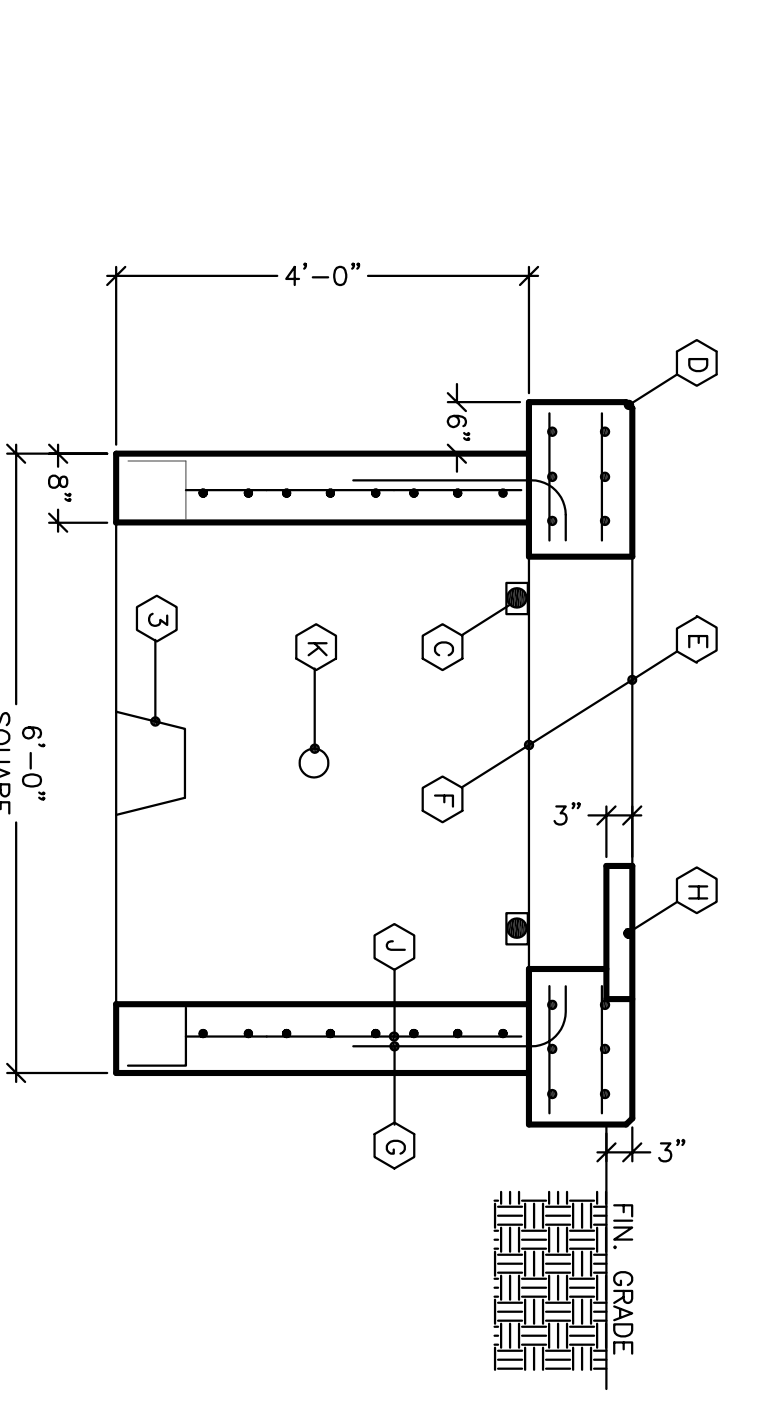
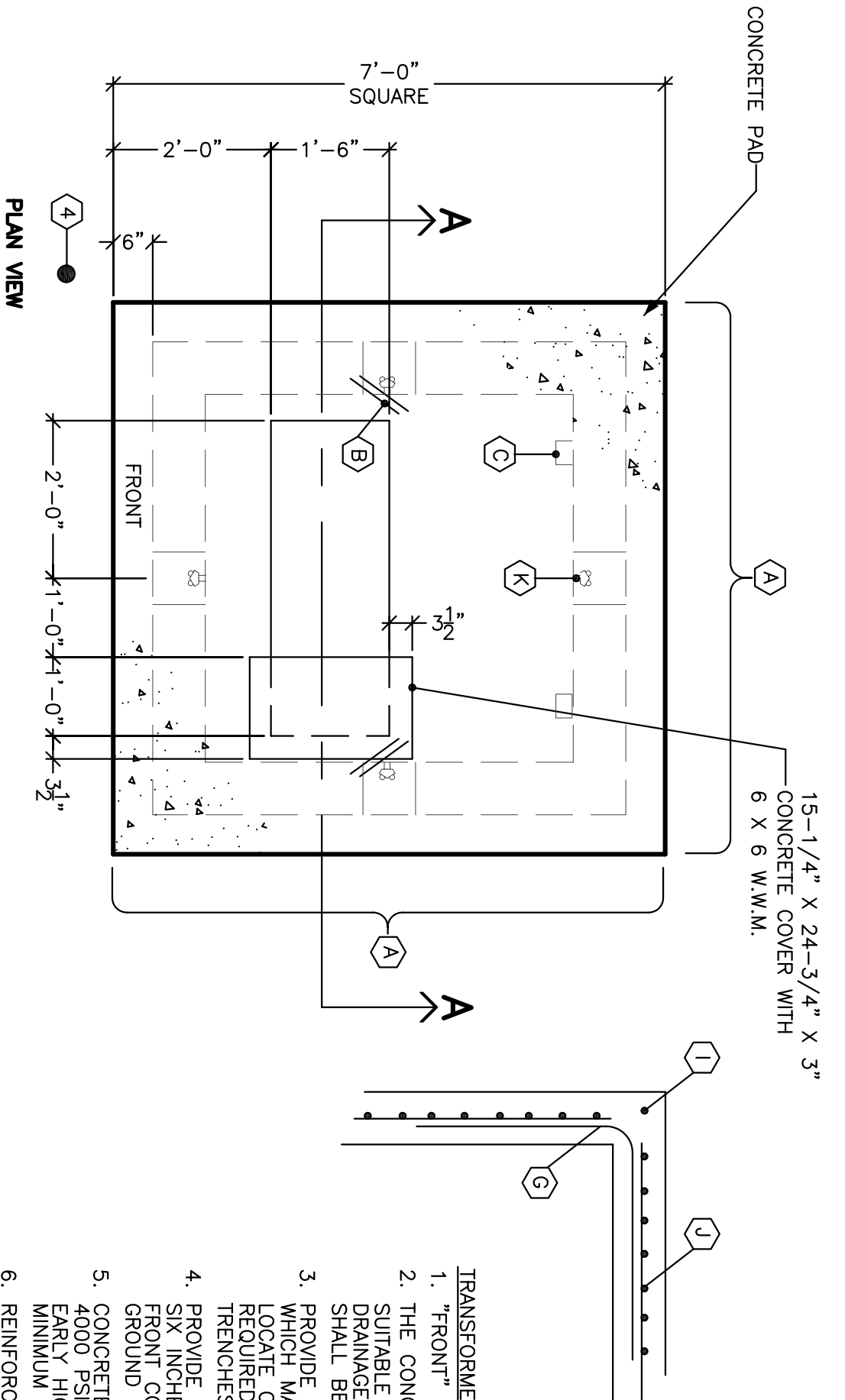


- NOTES (TYPICAL FOR ELEC AND TELEPHONE MANHOLES):
1. CONCRETE: 4,000 PSI @ 28 DAYS.
 2. USE 3/2\"/>

ELECTRICAL/TELEPHONE MANHOLE DETAIL



- TRANSFORMER PAD DETAIL NOTES
1. "FRONT" DENOTES THE SIDE FACING PLAN WEST.
 2. THE CONCRETE BASE SHALL BE SET ON A SABLE GRAVE BASE. PROVIDE ADEQUATE DRAINAGE AWAY FROM THE BASE. FINISH GRADE SHALL BE GRADED AWAY FROM THE PAD.
 3. PROVIDE 8\"/>

ELECTRICAL SYMBOLS

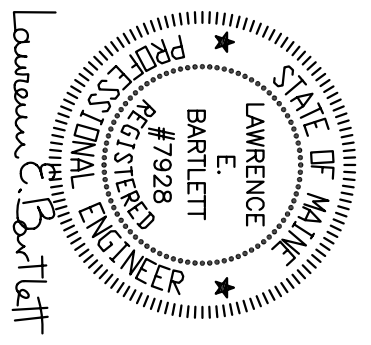
PLAN SYMBOLS

SINGLE LINE DIAGRAM SYMBOLS

SYMBOL	DESCRIPTION	SYMBOL	DESCRIPTION
	125V, 20A, DUPLEX GROUNDED RECEPTACLE		225 AF CIRCUIT BREAKER
	125V, 20A, QUAD GROUNDED RECEPTACLE		ELECTRICAL CONNECTION
	250V, SINGLE GROUNDED RECEPTACLE		GROUND CONNECTION
	30A TELEPHONE OUTLET (WALL MTD.)		EQUIPMENT ENCLOSURE
	PHOTOCELL		TRANSFORMER
	MOTION DETECTOR		UNFUSED SWITCH
	MANUAL MOTOR SWITCH		UTILITY CO. SERVICE METER
	FIRE ALARM SMOKE DETECTOR		
	FIRE ALARM PULL STATION		
	FIRE ALARM HEAT DETECTOR		
	JUNCTION BOX		
	CEILING MTD. FLUORESCENT LIGHT FIXTURE		
	WALL MOUNTED LIGHT FIXTURE		
	RECESSED/CEILING MOUNTED LIGHT FIXTURE		
	LIGHT/DEVICE SWITCH		
	ELECTRIC LOAD CENTER/PANLEBOARD		

Pearl Place Building 1 & 2 Portland Maine

Bartlett Design LIGHTING & ELECTRICAL ENGINEERING 942 WASHINGTON STREET, BATH, ME 04530 TEL (207) 443-5447 FAX (207) 443-5560



ELECTRICAL DETAILS

E0.2

Scale: As Shown SEPTEMBER 1, 2006