

Pearl Place Building 1 & 2 Portland Maine

Developer
Avesta Pearl Street One,
L.P.

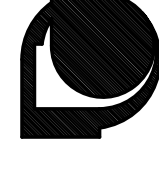
Architect
Winton Scott Architects
Landscape Architect
Carroll Associates

Civil Engineer
Gorrill - Palmer
Structural Engineer
Becker Engineering
Mechanical Engineer
Mechanical Systems Engineers
Lighting / Electrical Engineer
Bartlett Design

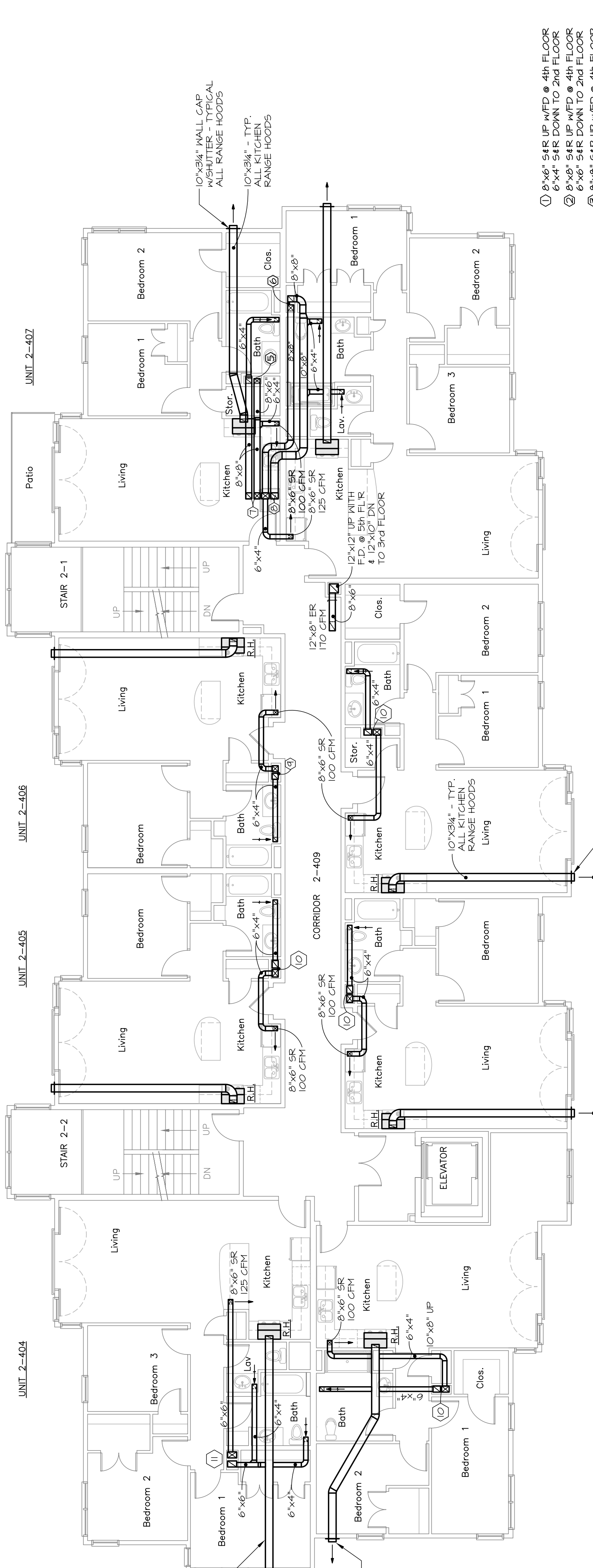
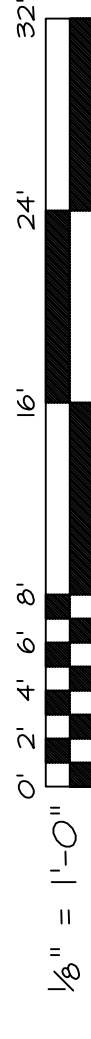
BUILDING 2
THIRD AND FOURTH
FLOOR MECHANICAL
DUCTWORK PLANS

M9
September 01, 2006

M.S.E. Proj_0606

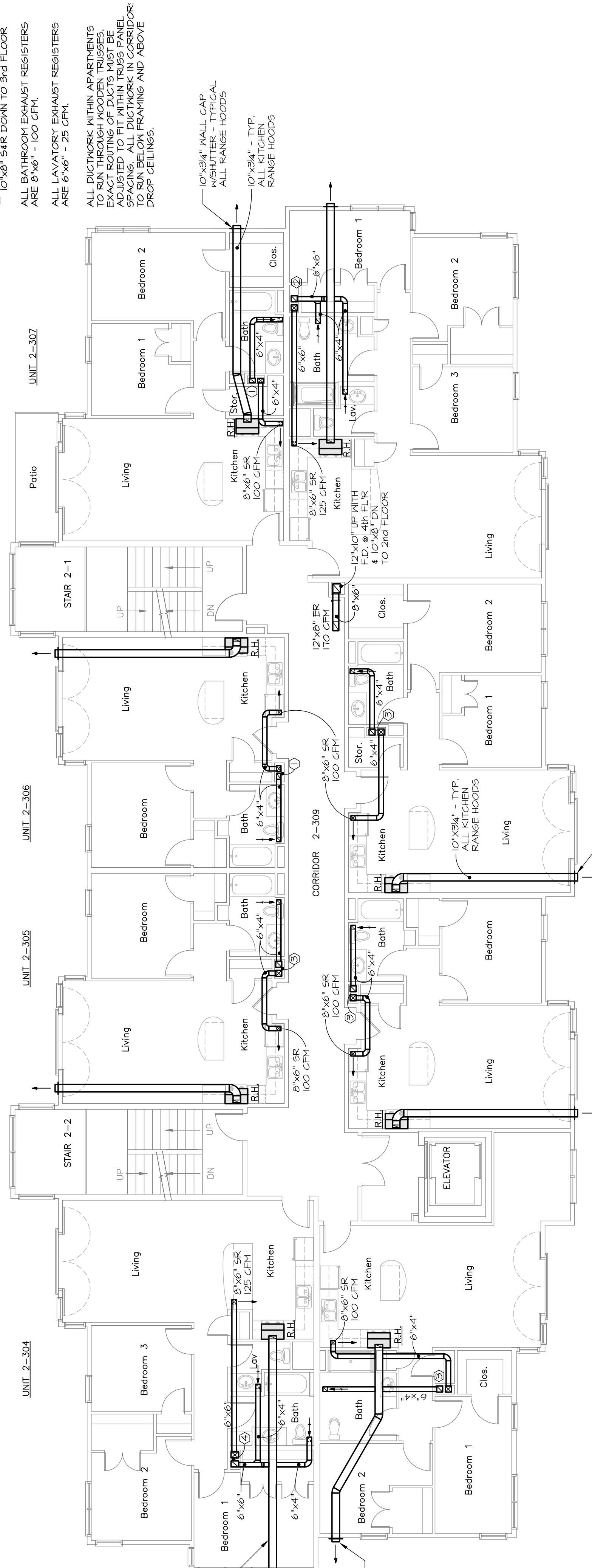


MECHANICAL SYSTEMS ENGINEERS
ROYAL FOREST CENTER, UNIT #10
100 FOREST FALLS DRIVE
PORTLAND, ME 04106
PHONE: (207) 846-1441
FAX: (207) 846-1443
mece@msengr.com
© copyright 2006



FOURTH FLOOR

- ① 6"x6" SR UP W/FD @ 4th FLOOR
- ② 6"x6" SR UP W/FD @ 4th FLOOR
- ③ 6"x6" SR DOWN TO 2nd FLOOR
- ④ 6"x6" SR DOWN TO 2nd FLOOR
- ⑤ 6"x6" SR DOWN TO 2nd FLOOR
- ⑥ 6"x6" SR DOWN TO 2nd FLOOR
- ⑦ 6"x6" SR DOWN TO 2nd FLOOR
- ⑧ 6"x6" SR DOWN TO 2nd FLOOR
- ⑨ 6"x6" SR DOWN TO 2nd FLOOR
- ⑩ 6"x6" SR DOWN TO 2nd FLOOR
- ⑪ 6"x6" SR DOWN TO 2nd FLOOR
- ⑫ 6"x6" SR DOWN TO 2nd FLOOR
- ⑬ 6"x6" SR DOWN TO 2nd FLOOR
- ⑭ 6"x6" SR DOWN TO 2nd FLOOR
- ⑮ 6"x6" SR DOWN TO 2nd FLOOR
- ⑯ 6"x6" SR DOWN TO 2nd FLOOR
- ⑰ 6"x6" SR DOWN TO 2nd FLOOR
- ⑱ 6"x6" SR DOWN TO 2nd FLOOR
- ⑲ 6"x6" SR DOWN TO 2nd FLOOR
- ⑳ 6"x6" SR DOWN TO 2nd FLOOR
- ㉑ 6"x6" SR DOWN TO 2nd FLOOR
- ㉒ 6"x6" SR DOWN TO 2nd FLOOR
- ㉓ 6"x6" SR DOWN TO 2nd FLOOR
- ㉔ 6"x6" SR DOWN TO 2nd FLOOR
- ㉕ 6"x6" SR DOWN TO 2nd FLOOR
- ㉖ 6"x6" SR DOWN TO 2nd FLOOR
- ㉗ 6"x6" SR DOWN TO 2nd FLOOR
- ㉘ 6"x6" SR DOWN TO 2nd FLOOR
- ㉙ 6"x6" SR DOWN TO 2nd FLOOR
- ㉚ 6"x6" SR DOWN TO 2nd FLOOR
- ㉛ 6"x6" SR DOWN TO 2nd FLOOR
- ㉜ 6"x6" SR DOWN TO 2nd FLOOR
- ㉝ 6"x6" SR DOWN TO 2nd FLOOR
- ㉞ 6"x6" SR DOWN TO 2nd FLOOR
- ㉟ 6"x6" SR DOWN TO 2nd FLOOR
- ㊱ 6"x6" SR DOWN TO 2nd FLOOR
- ㊲ 6"x6" SR DOWN TO 2nd FLOOR
- ㊳ 6"x6" SR DOWN TO 2nd FLOOR
- ㊴ 6"x6" SR DOWN TO 2nd FLOOR
- ㊵ 6"x6" SR DOWN TO 2nd FLOOR
- ㊶ 6"x6" SR DOWN TO 2nd FLOOR
- ㊷ 6"x6" SR DOWN TO 2nd FLOOR
- ㊸ 6"x6" SR DOWN TO 2nd FLOOR
- ㊹ 6"x6" SR DOWN TO 2nd FLOOR
- ㊺ 6"x6" SR DOWN TO 2nd FLOOR
- ㊻ 6"x6" SR DOWN TO 2nd FLOOR
- ㊼ 6"x6" SR DOWN TO 2nd FLOOR
- ㊽ 6"x6" SR DOWN TO 2nd FLOOR
- ㊾ 6"x6" SR DOWN TO 2nd FLOOR
- ㊿ 6"x6" SR DOWN TO 2nd FLOOR



THIRD FLOOR

- ① 6"x6" SR UP W/FD @ 4th FLOOR
- ② 6"x6" SR UP W/FD @ 4th FLOOR
- ③ 6"x6" SR DOWN TO 2nd FLOOR
- ④ 6"x6" SR DOWN TO 2nd FLOOR
- ⑤ 6"x6" SR DOWN TO 2nd FLOOR
- ⑥ 6"x6" SR DOWN TO 2nd FLOOR
- ⑦ 6"x6" SR DOWN TO 2nd FLOOR
- ⑧ 6"x6" SR DOWN TO 2nd FLOOR
- ⑨ 6"x6" SR DOWN TO 2nd FLOOR
- ⑩ 6"x6" SR DOWN TO 2nd FLOOR
- ⑪ 6"x6" SR DOWN TO 2nd FLOOR
- ⑫ 6"x6" SR DOWN TO 2nd FLOOR
- ⑬ 6"x6" SR DOWN TO 2nd FLOOR
- ⑭ 6"x6" SR DOWN TO 2nd FLOOR
- ⑮ 6"x6" SR DOWN TO 2nd FLOOR
- ⑯ 6"x6" SR DOWN TO 2nd FLOOR
- ⑰ 6"x6" SR DOWN TO 2nd FLOOR
- ⑱ 6"x6" SR DOWN TO 2nd FLOOR
- ⑲ 6"x6" SR DOWN TO 2nd FLOOR
- ⑳ 6"x6" SR DOWN TO 2nd FLOOR
- ㉑ 6"x6" SR DOWN TO 2nd FLOOR
- ㉒ 6"x6" SR DOWN TO 2nd FLOOR
- ㉓ 6"x6" SR DOWN TO 2nd FLOOR
- ㉔ 6"x6" SR DOWN TO 2nd FLOOR
- ㉕ 6"x6" SR DOWN TO 2nd FLOOR
- ㉖ 6"x6" SR DOWN TO 2nd FLOOR
- ㉗ 6"x6" SR DOWN TO 2nd FLOOR
- ㉘ 6"x6" SR DOWN TO 2nd FLOOR
- ㉙ 6"x6" SR DOWN TO 2nd FLOOR
- ㉚ 6"x6" SR DOWN TO 2nd FLOOR
- ㉛ 6"x6" SR DOWN TO 2nd FLOOR
- ㉜ 6"x6" SR DOWN TO 2nd FLOOR
- ㉝ 6"x6" SR DOWN TO 2nd FLOOR
- ㉞ 6"x6" SR DOWN TO 2nd FLOOR
- ㉟ 6"x6" SR DOWN TO 2nd FLOOR
- ㊱ 6"x6" SR DOWN TO 2nd FLOOR
- ㊲ 6"x6" SR DOWN TO 2nd FLOOR
- ㊳ 6"x6" SR DOWN TO 2nd FLOOR
- ㊴ 6"x6" SR DOWN TO 2nd FLOOR
- ㊵ 6"x6" SR DOWN TO 2nd FLOOR
- ㊶ 6"x6" SR DOWN TO 2nd FLOOR
- ㊷ 6"x6" SR DOWN TO 2nd FLOOR
- ㊸ 6"x6" SR DOWN TO 2nd FLOOR
- ㊹ 6"x6" SR DOWN TO 2nd FLOOR
- ㊺ 6"x6" SR DOWN TO 2nd FLOOR
- ㊻ 6"x6" SR DOWN TO 2nd FLOOR
- ㊼ 6"x6" SR DOWN TO 2nd FLOOR
- ㊽ 6"x6" SR DOWN TO 2nd FLOOR
- ㊾ 6"x6" SR DOWN TO 2nd FLOOR
- ㊿ 6"x6" SR DOWN TO 2nd FLOOR