

Pearl Place Building 1 & 2 Portland Maine

Developer
Avesta Pearl Street One,
L.P.

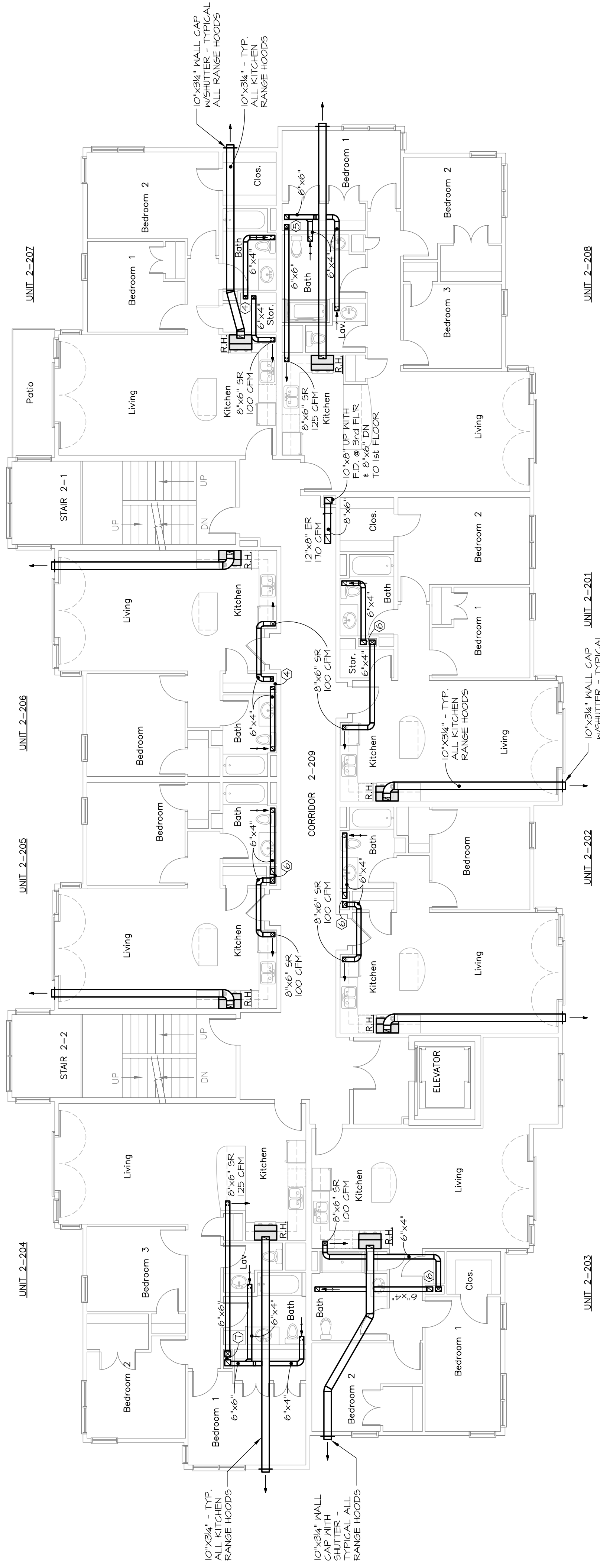
Architect
Winton Scott Architects
Landscape Architect
Carroll Associates

Civil Engineer
Gorill - Palmer
Structural Engineer
Becker Engineering
Mechanical Engineer
Mechanical Systems Engineers
Lighting / Electrical Engineer
Bartlett Design

BUILDING 2
FIRST AND SECOND
FLOOR MECHANICAL
DUCTWORK PLANS

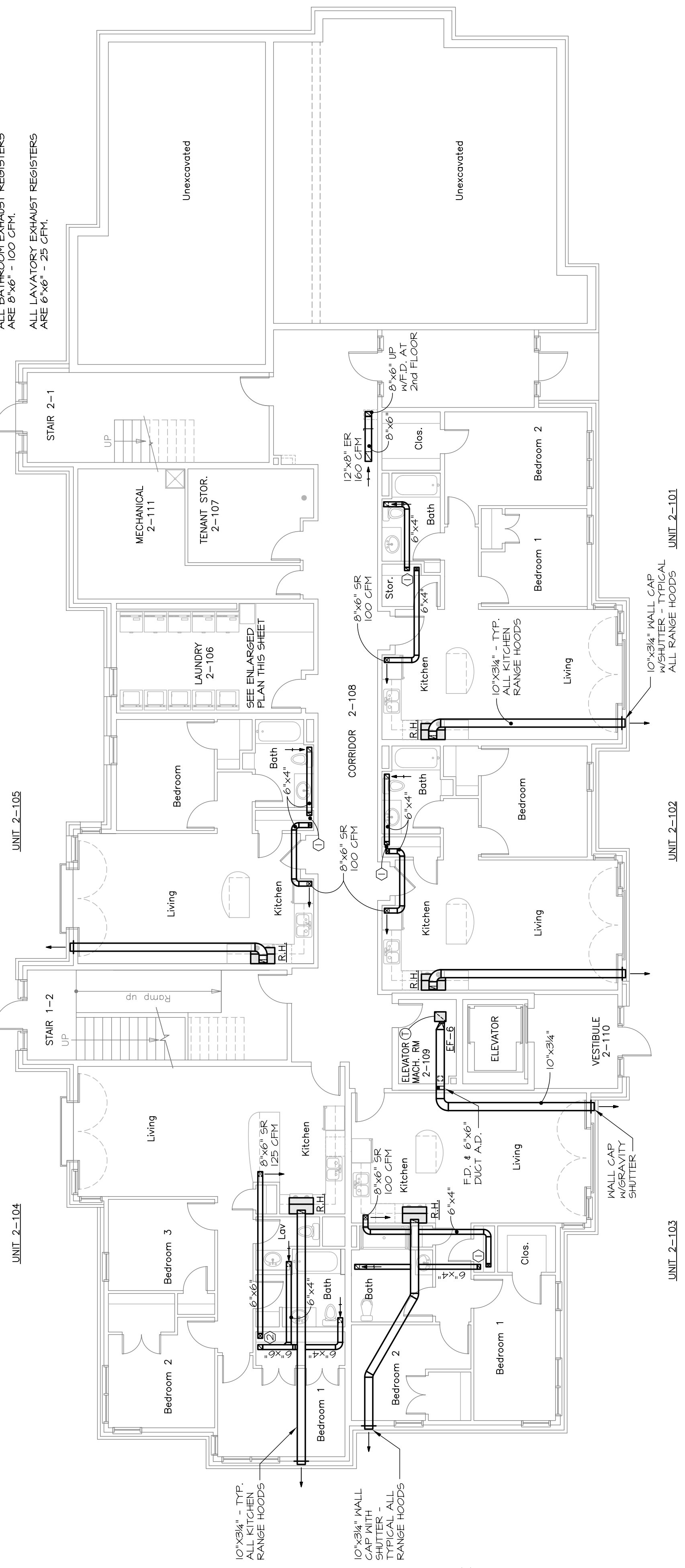
M8
September 01, 2006

M.S.E. Proj_0606

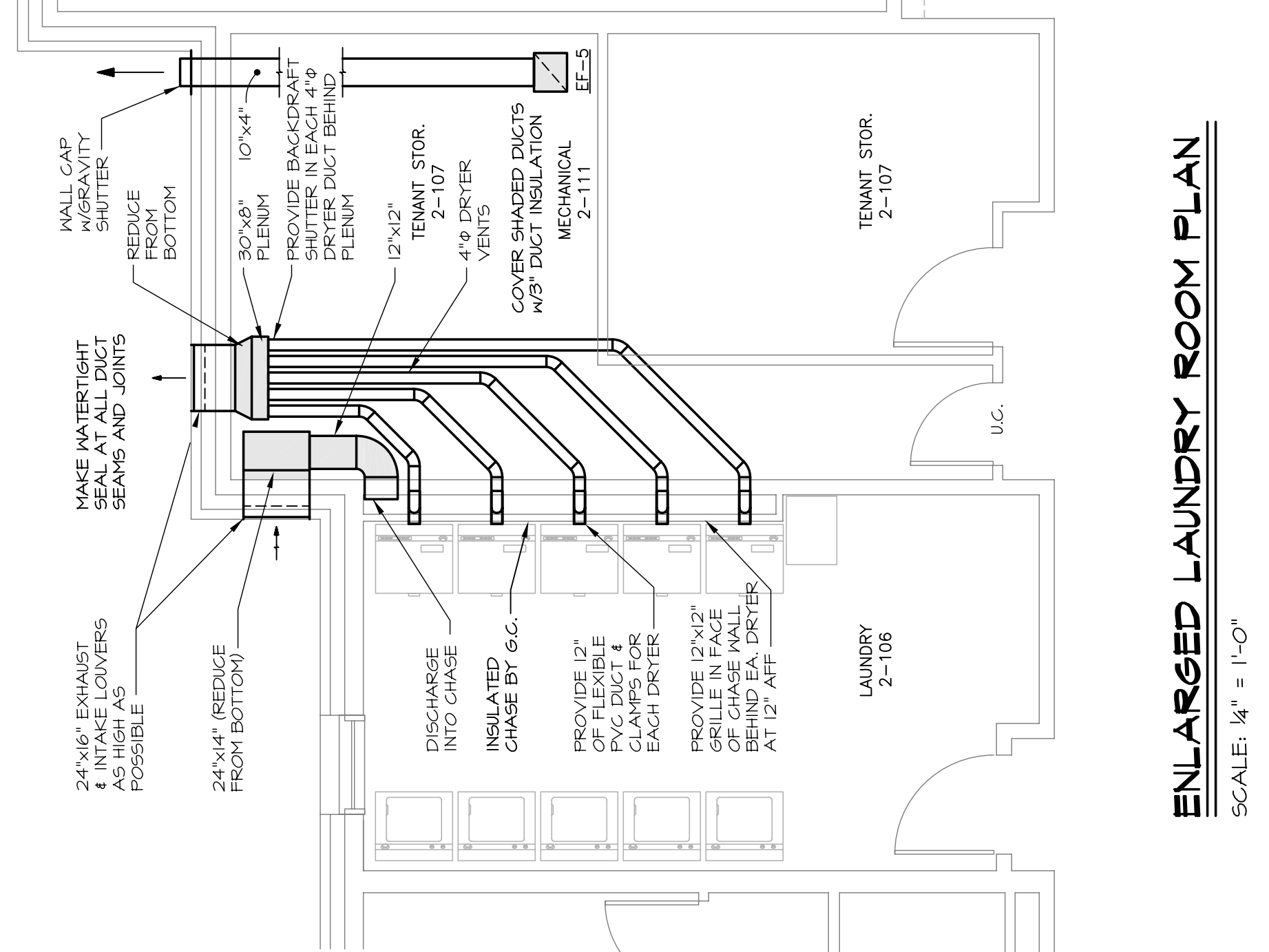


SECOND FLOOR

ALL DUCTWORK WITHIN APARTMENTS TO RUN THROUGH WOODEN TRUSSES. EXACT ROUTING OF DUCTS MUST BE DETERMINED FOR EACH APARTMENT. SPACING ALL DUCTWORK IN CORRIDORS TO RUN BELOW FRAMING AND ABOVE DROP CEILING.

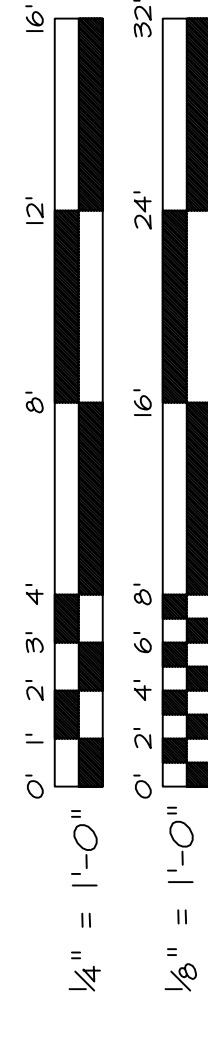


FIRST FLOOR



ENLARGED LAUNDRY ROOM PLAN

SCALE: 1/4" = 1'-0"



MECHANICAL SYSTEMS ENGINEERS
ROYAL RIVER CENTER, UNIT #10
108 FOREST FALLS DRIVE
PORTLAND, ME 04106
PHONE: (207) 846-1441
VOICE: (207) 846-1443
FAX: (207) 846-1443
mece@compnet.com
© copyright 2006

