

Pearl Place Building 1 & 2 Portland Maine

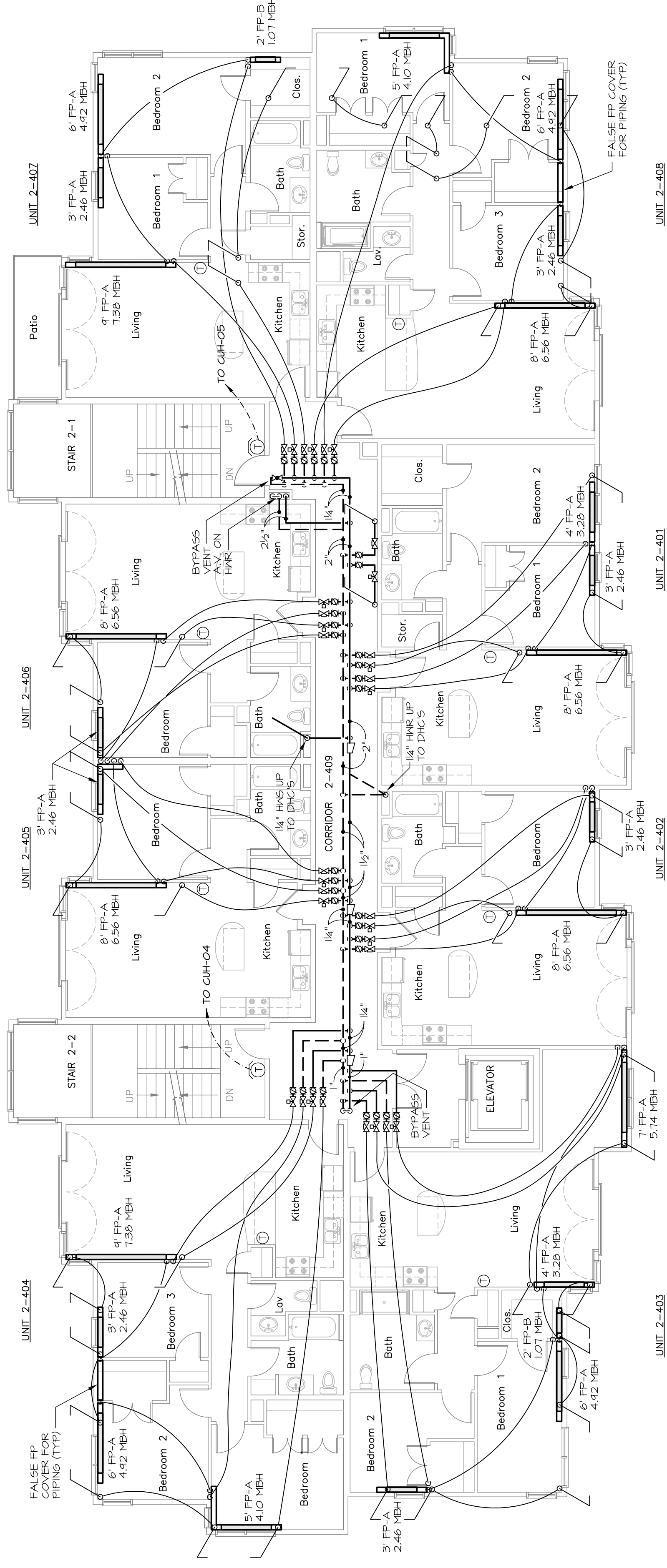
Developer
Avesta Pearl Street One,
L.P.

Architect
Winton Scott Architects
Landscape Architect
Carroll Associates
Civil Engineer
Gorrill - Palmer
Structural Engineer
Becker Engineering
Mechanical Engineer
Mechanical Systems Engineers
Lighting / Electrical Engineer
Bartlett Design

BUILDING 2
THIRD AND FOURTH
FLOOR MECHANICAL
PIPING PLANS

M6
September 01, 2006

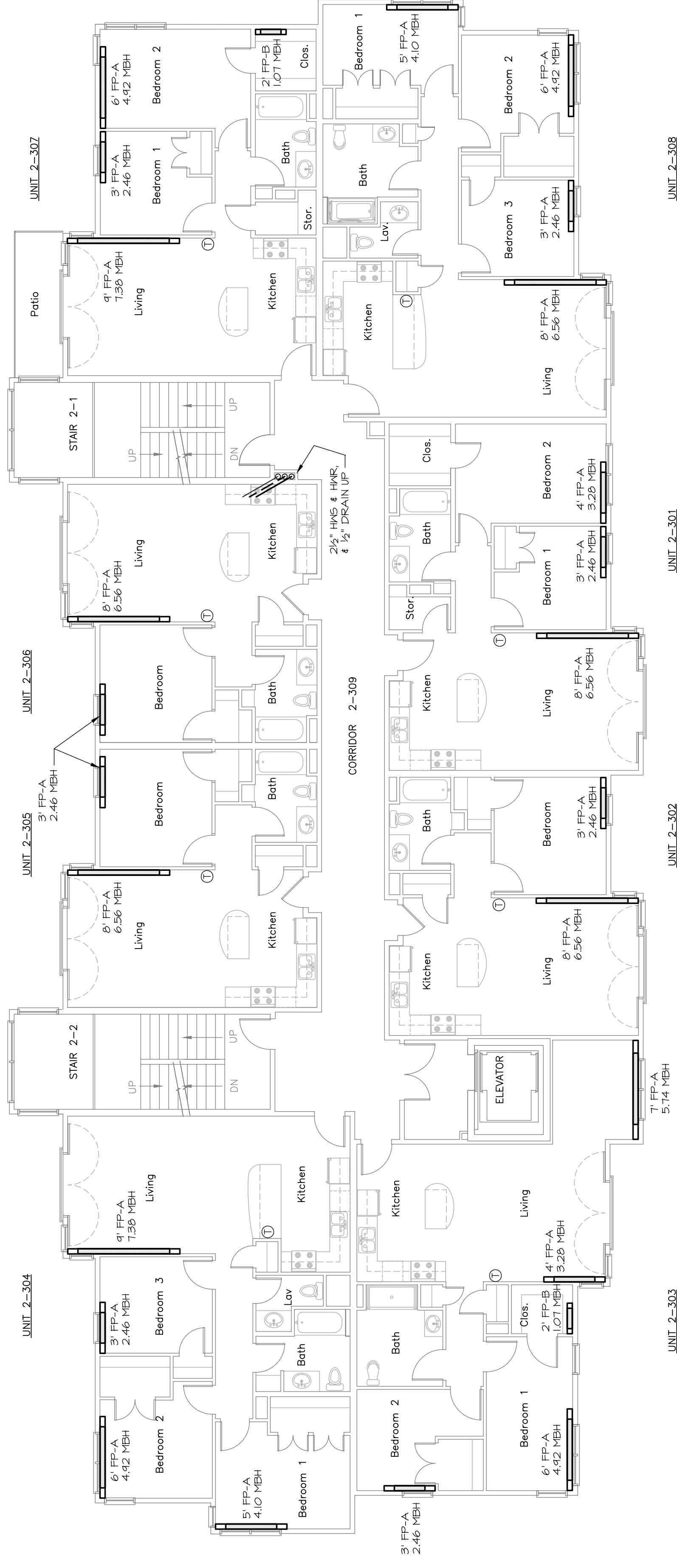
M.S.E. Proj_0606



FOURTH FLOOR

NOTE:
ALL BRANCH LINES TO
INDIVIDUAL ZONES TO BE
3/4" UNLESS NOTED OTHERWISE

NOTE:
ALL BRANCH LINES TO INDIVIDUAL
HEATING ZONES TO HAVE 3/4" A.B.V.'S
SET AT 2.0 GPM WITH THE FOLLOWING
EXCEPTIONS -
UNIT 2-501; 3.0 GPM



THIRD FLOOR

UNIT 2-301
UNIT 2-302
UNIT 2-303
UNIT 2-304
UNIT 2-305
UNIT 2-306

MECHANICAL SYSTEMS ENGINEERS
ROYAL FOREST CENTER, UNIT #10
100 FOREST FALLS DRIVE
PORTLAND, ME 04106
PHONE: (207) 846-1441
VOICE: (207) 846-1443
FAX: (207) 846-1443
mech@msengr.com
© copyright 2006



1/8" = 1'-0"
0' 2' 4' 6' 8' 16' 24' 32'