

# Pearl Place Building 1 & 2 Portland Maine

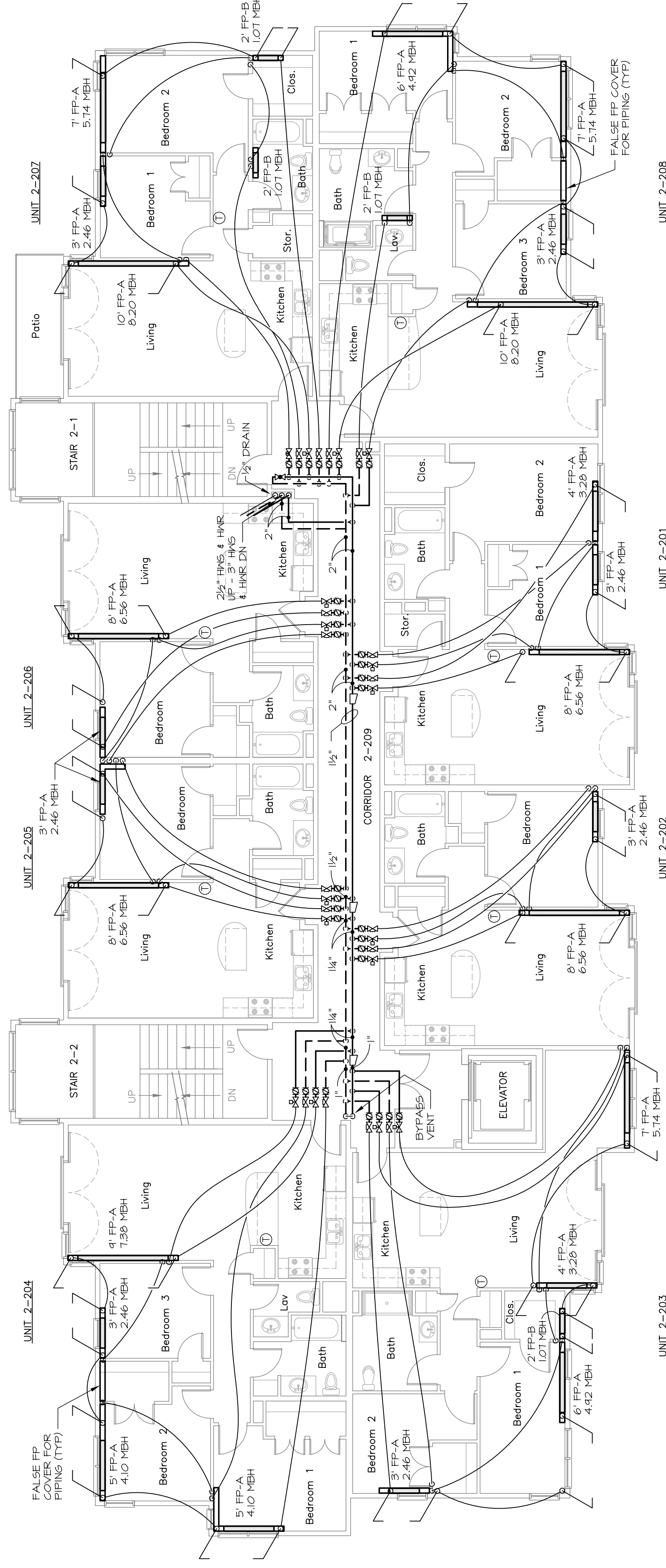
**Developer**  
Avesta Pearl Street One,  
L.P.

**Architect**  
Winton Scott Architects  
Landscape Architect  
Carroll Associates  
Civil Engineer  
Gorrill - Palmer  
Structural Engineer  
Becker Engineering  
Mechanical Engineer  
Mechanical Systems Engineers  
Lighting / Electrical Engineer  
Bartlett Design

**BUILDING 2**  
FIRST AND SECOND  
FLOOR MECHANICAL  
PIPING PLANS

M5  
September 01, 2006

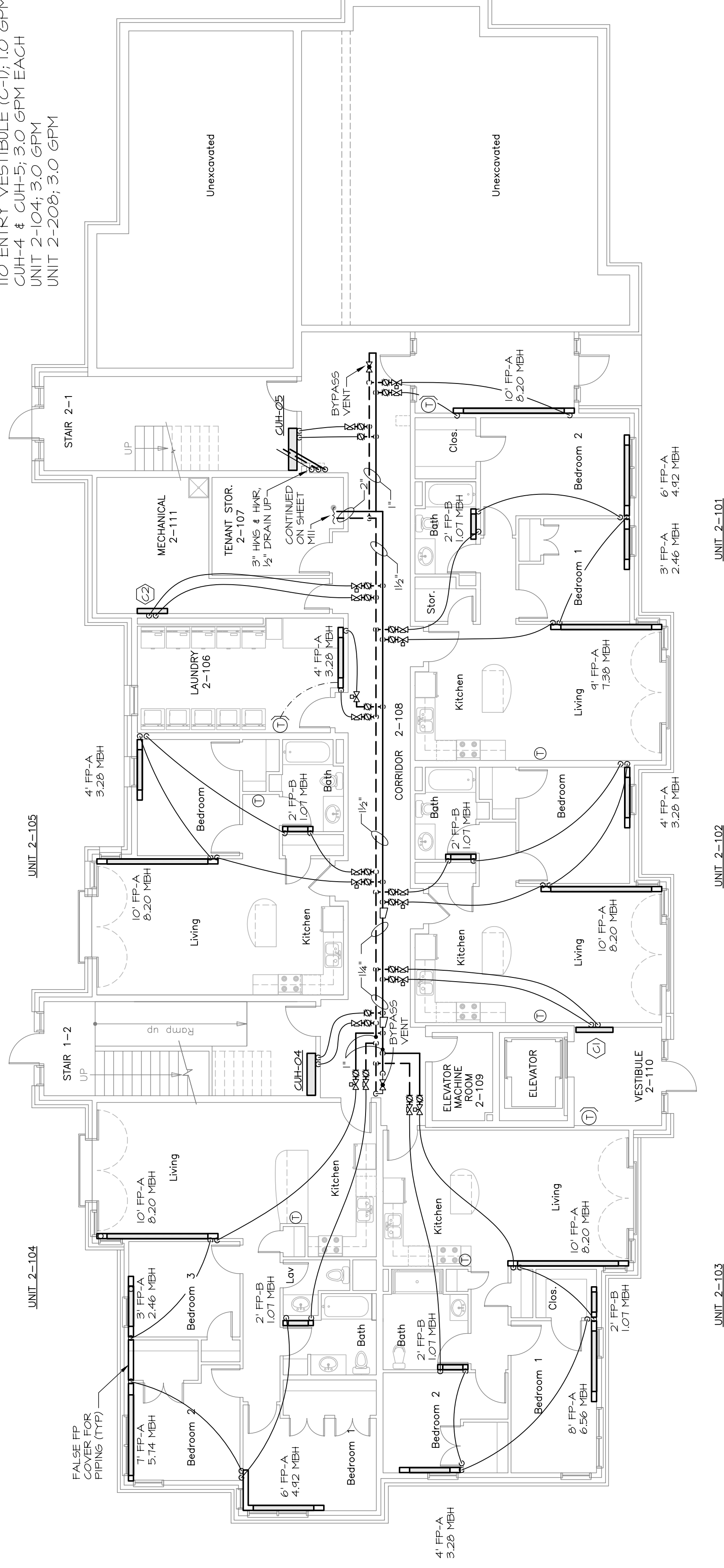
M.S.E. Proj\_0606



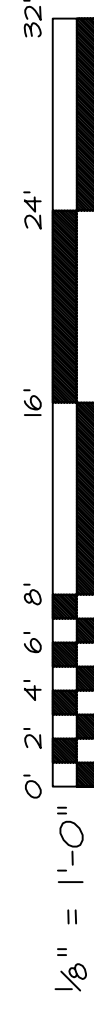
**NOTE:**  
ALL BRANCH LINES TO INDIVIDUAL HEATING ZONES TO HAVE 3/4\"/>

## SECOND FLOOR

**NOTE:**  
ALL BRANCH PIPING TO INDIVIDUAL ZONES TO BE 3/4\"/>



## FIRST FLOOR



**MECHANICAL SYSTEMS ENGINEERS**  
ROYAL FOREST CENTER, UNIT #10  
100 FOREST FALLS DRIVE  
YORK FALLS, ME 04488  
PHONE: (207) 846-1441  
VOICE: (207) 846-1443  
FAX: (207) 846-1443  
msengr@comcast.net  
© copyright 2006

