

Pearl Place Building 1 & 2 Portland Maine

Developer
Avesta Pearl Street One,
L.P.

Architect
Winton Scott Architects
Landscape Architect
Carroll Associates

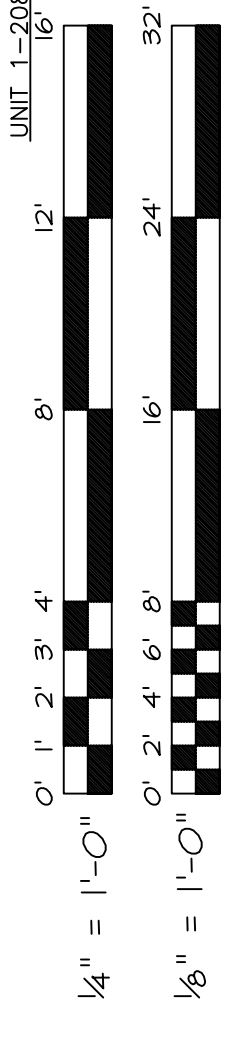
Civil Engineer
Gorill - Palmer
Structural Engineer
Becker Engineering
Mechanical Engineer
Mechanical Systems Engineers
Lighting / Electrical Engineer
Bartlett Design

BUILDING 1
SECOND AND THIRD
FLOOR MECHANICAL
DUCTWORK PLANS

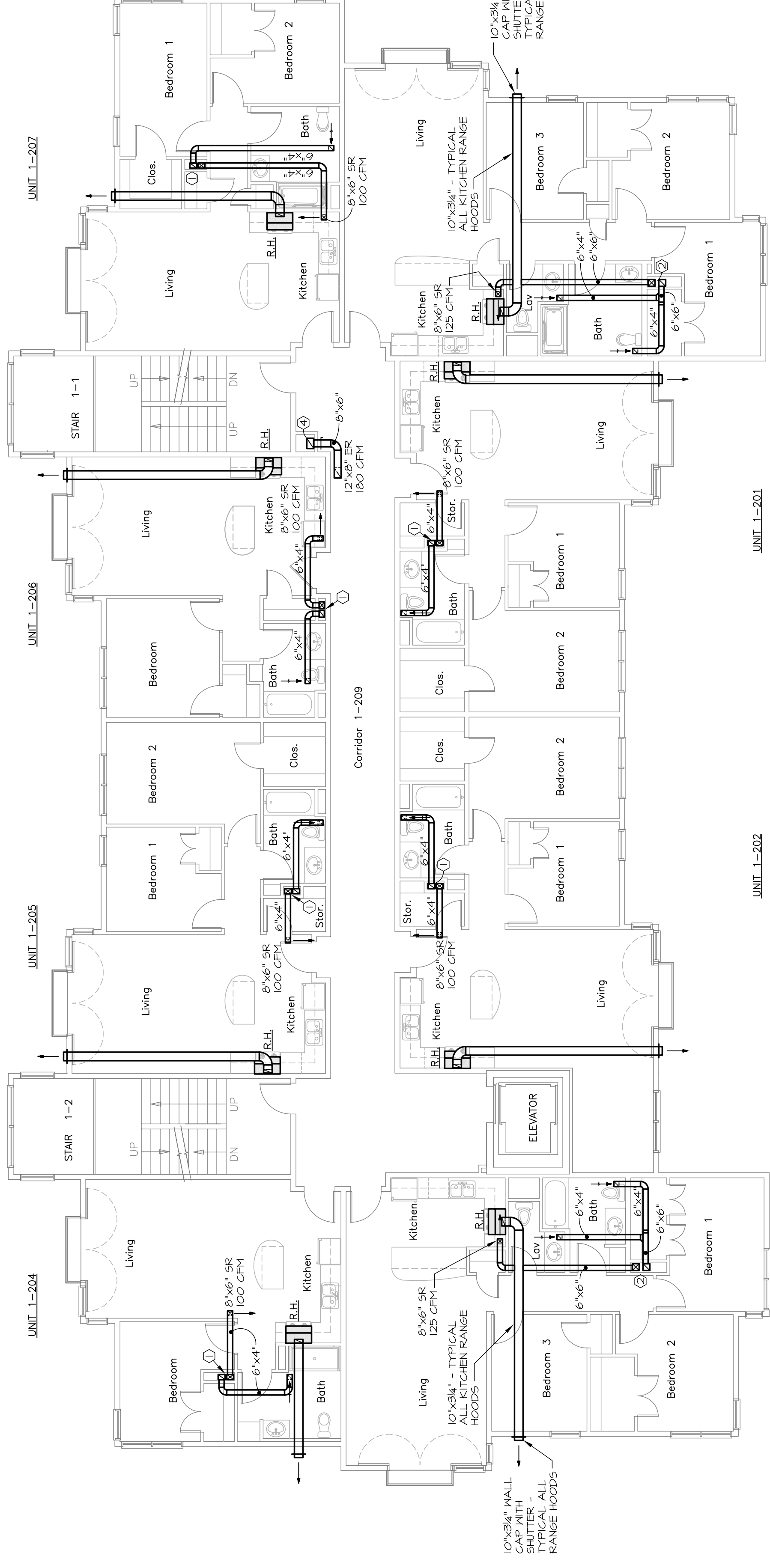
M4
September 01, 2006

M.S.E. Proj. 0606

MECHANICAL SYSTEMS ENGINEERS
ROYAL FOREST CENTER, UNIT #10
100 FOREST FALLS DRIVE
PORTLAND, ME 04106
PHONE: (207) 846-1441
FAX: (207) 846-1443
mech@csd.com
© copyright 2006



SECOND FLOOR

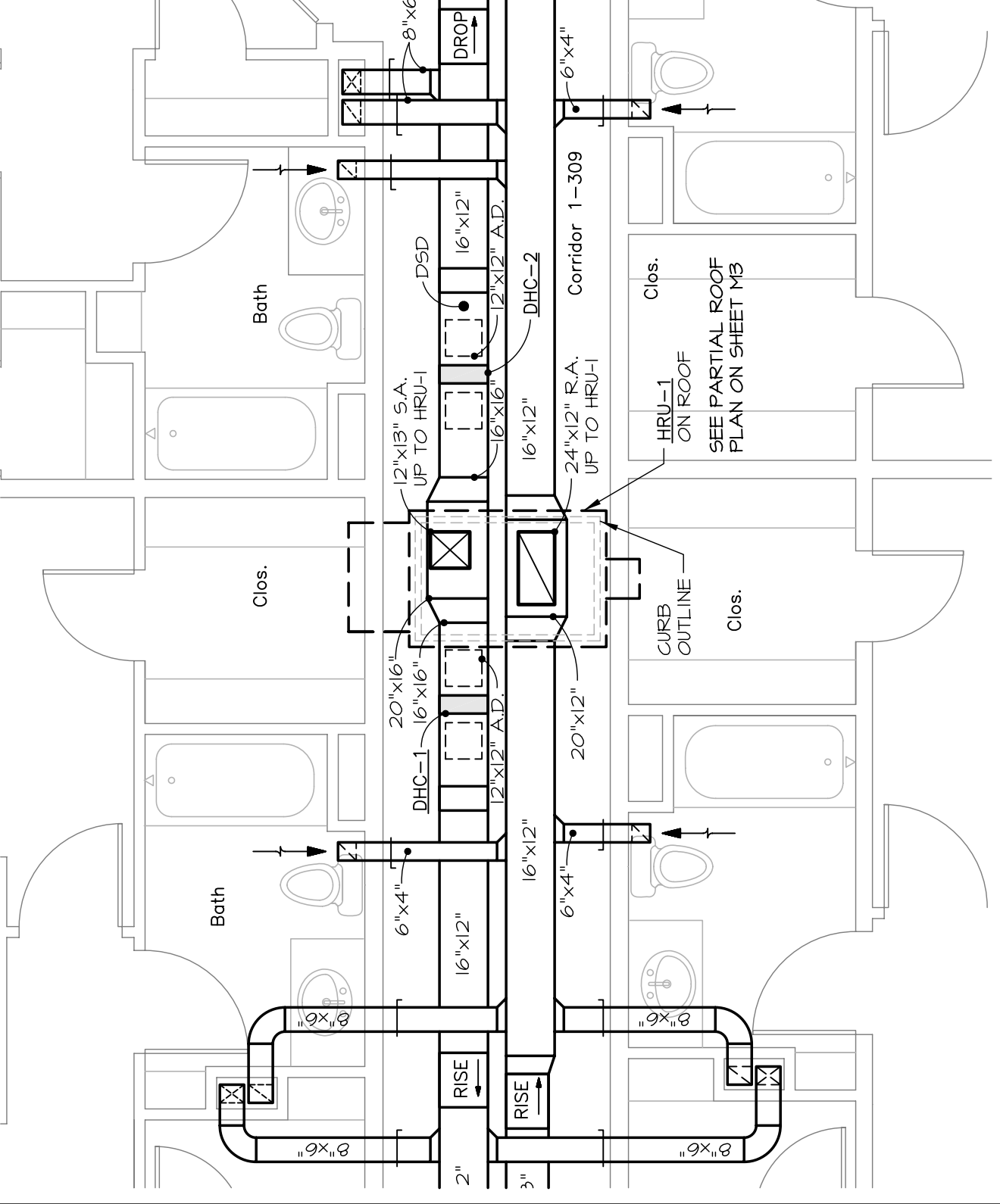
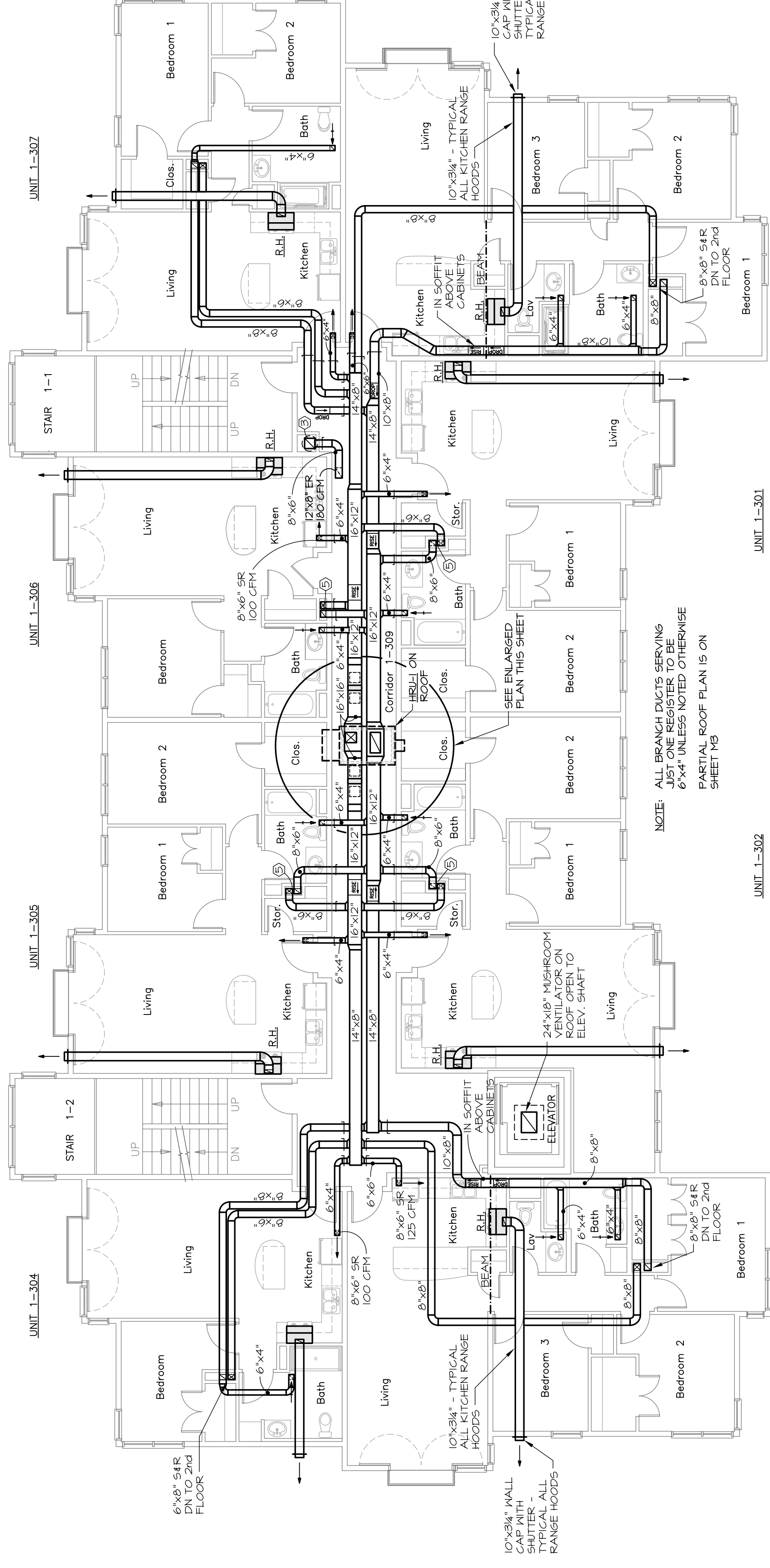


- ① 6"x6" SR UP WFD @ 3rd FLOOR
 - ② 6"x6" SR DN TO 1st FLOOR
 - ③ 6"x6" SR UP WFD @ 3rd FLOOR
 - ④ 6"x6" SR DN TO 1st FLOOR
 - ⑤ 12"x12" UP TO EE-4 ON ROOF
 - ⑥ 12"x12" DN TO 2nd FLOOR
 - ⑦ 12"x12" UP WFD @ 3rd FLOOR
 - ⑧ 6"x6" DN TO 2nd FLOOR
 - ⑨ 6"x6" SR DN TO 3rd FLOOR
- ALL BATHROOM EXHAUST REGISTERS ARE 6"x6" - 100 CFM.
ALL LAVATORY EXHAUST REGISTERS ARE 6"x6" - 25 CFM.

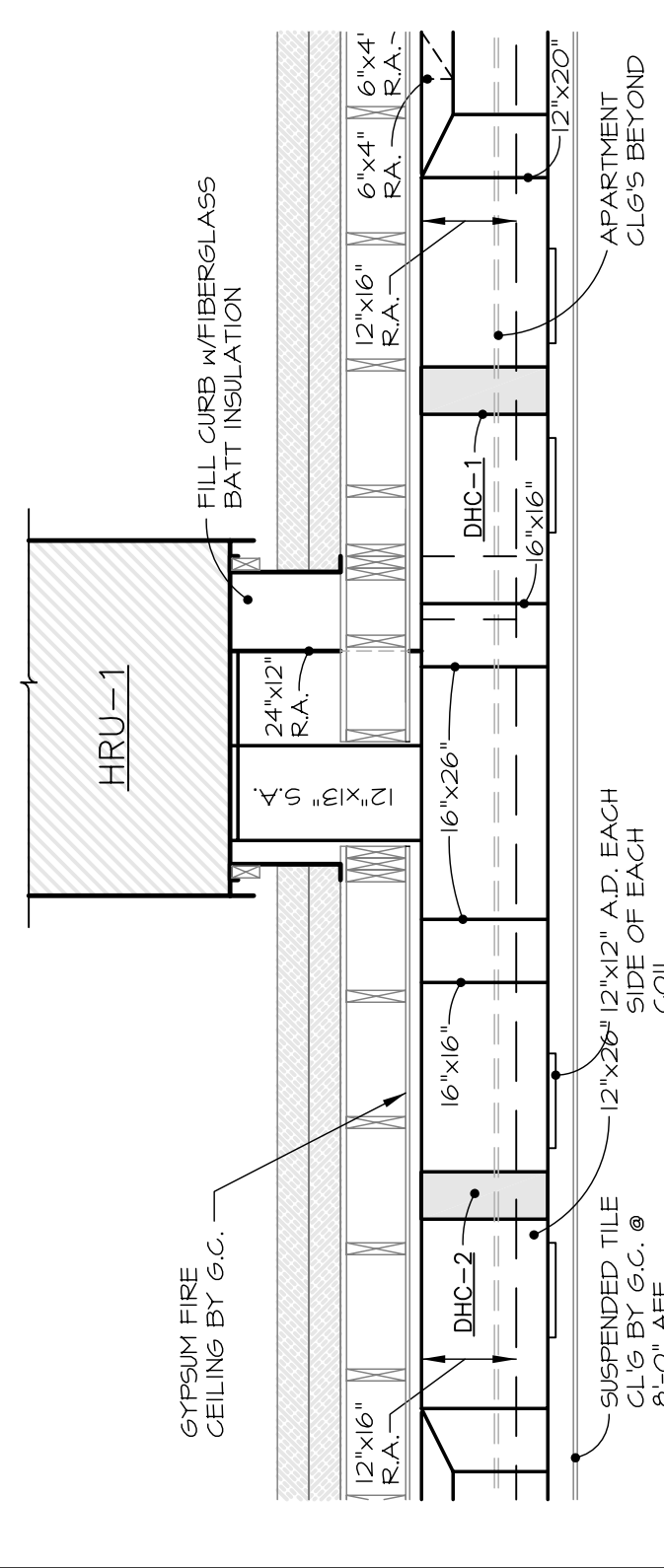
THIRD FLOOR

ALL DUCTWORK WITHIN APARTMENTS TO RUN THROUGH WOODEN TRUSSES. ADJUSTED TO FIT WITHIN TRUSS PANEL SPACING. ALL DUCTWORK IN CORRIDORS TO RUN BELOW FRAMING AND ABOVE DROP CEILING.

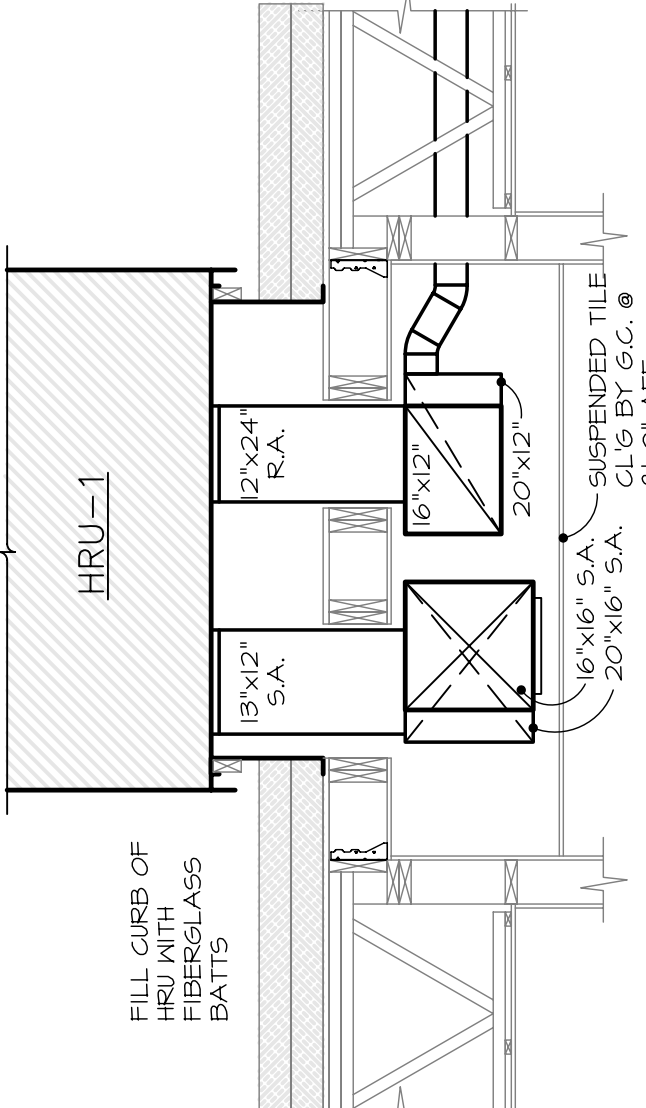
NOTE: ALL BRANCH DUCTS SERVING JUST ONE REGISTER TO BE 6"x4" UNLESS NOTED OTHERWISE. PARTIAL ROOF PLAN IS ON SHEET M5.



ENLARGED PLAN AT HRU-1
SCALE: 1/4" = 1'-0"



SECTION AT HRU-1
SCALE: 1/2" = 1'-0"



CORRIDOR SECTION UNDER HRU-1
SCALE: 1/2" = 1'-0"