

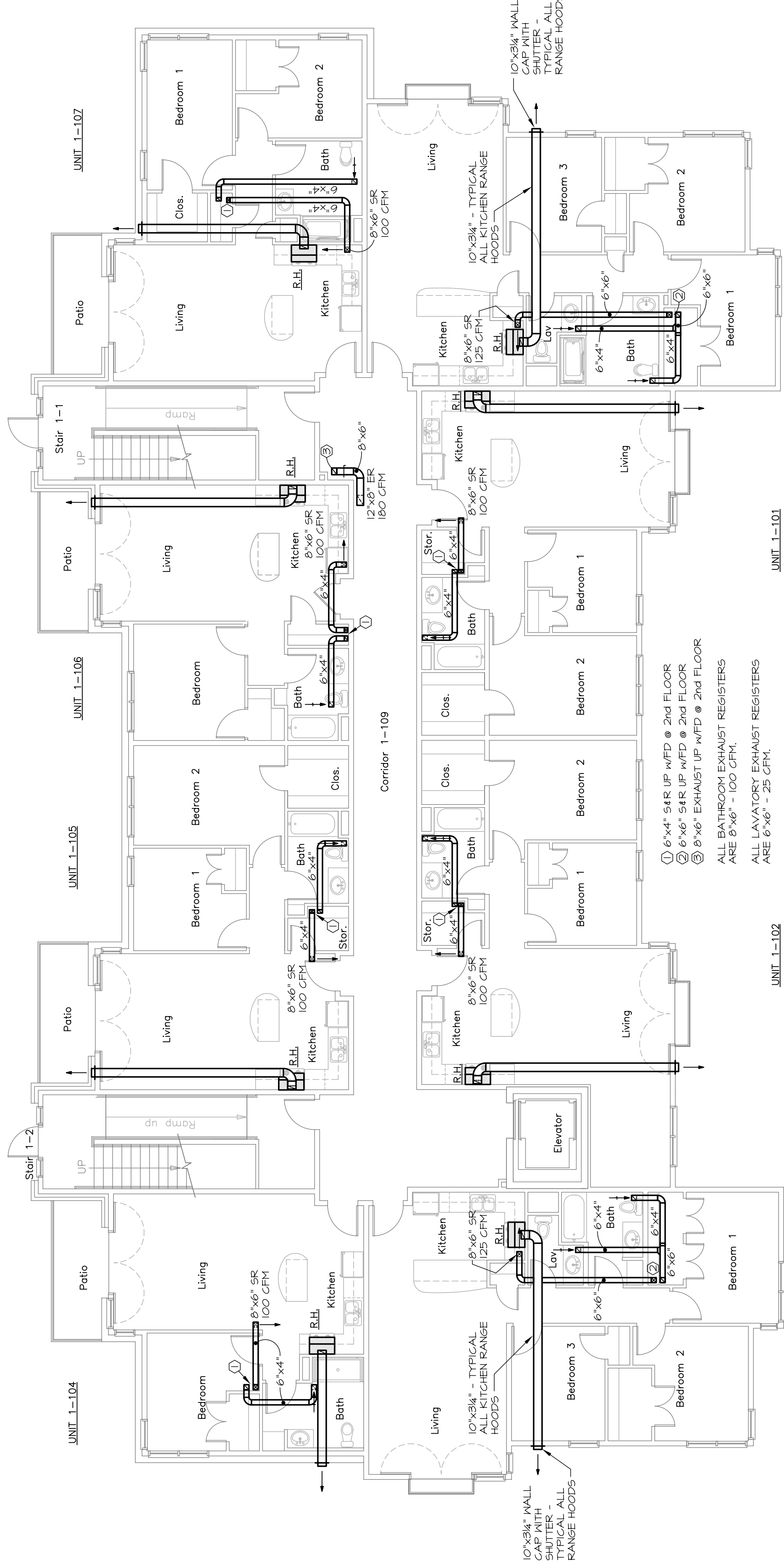
# Pearl Place Building 1 & 2 Portland Maine

**Developer**  
Avesta Pearl Street One,  
L.P.

**Architect**  
Winton Scott Architects  
Landscape Architect  
Carroll Associates  
**Civil Engineer**  
Gorrill - Palmer  
**Structural Engineer**  
Becker Engineering  
**Mechanical Engineer**  
Mechanical Systems Engineers  
**Lighting / Electrical Engineer**  
Bartlett Design

**BUILDING 1**  
BASEMENT AND FIRST  
FLOOR MECHANICAL  
DUCTWORK PLANS  
M3  
September 01, 2006

M.S.E. Proj\_0606

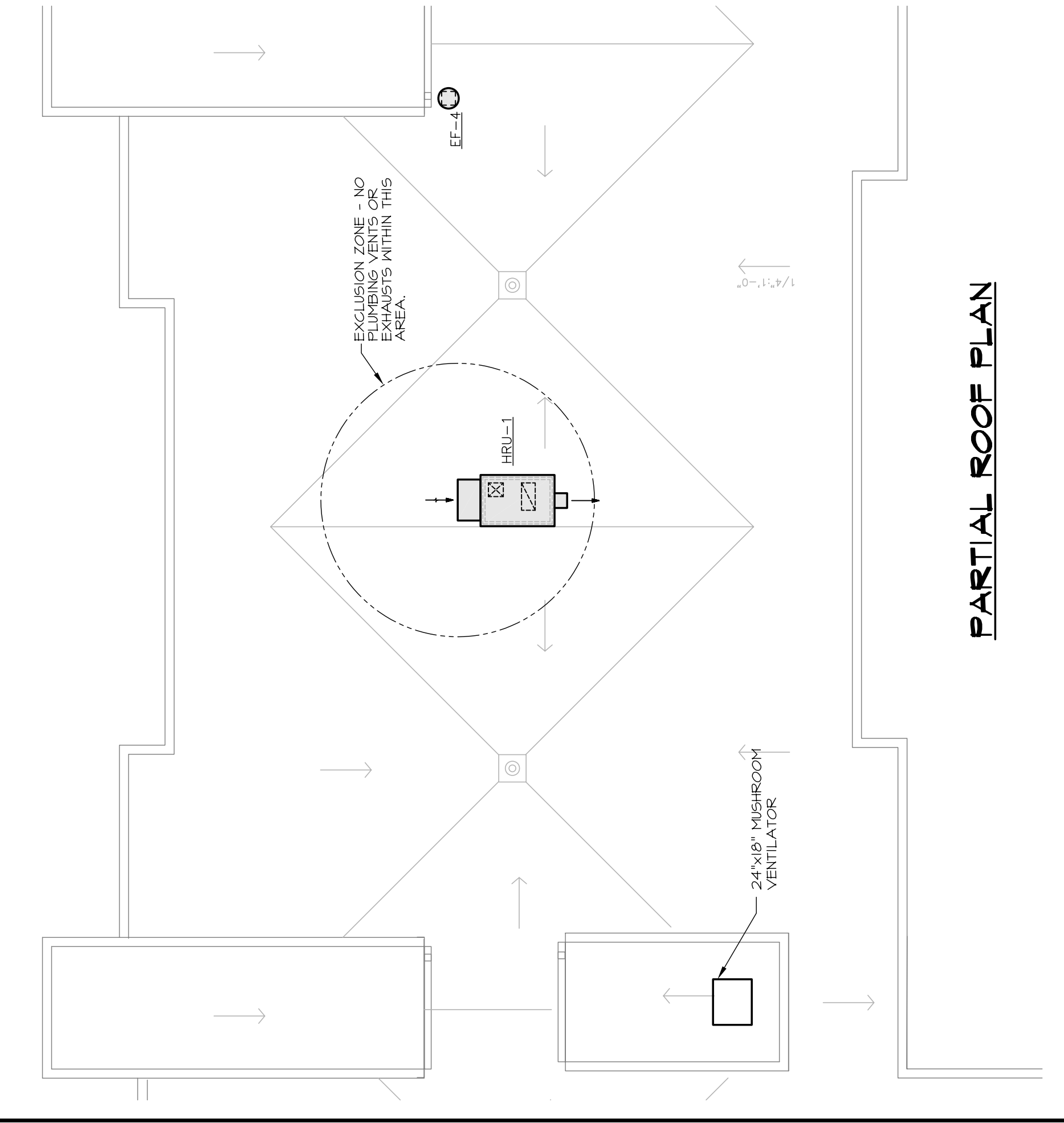


## FIRST FLOOR

ALL DUCTWORK WITHIN APARTMENTS TO RUN THROUGH WOODEN TRUSSES. CAPS AND SEALS TO BE ADJUSTED TO FIT WITHIN TRUSS PANEL SPACING. ALL DUCTWORK IN CORRIDORS TO RUN BELOW FRAMING AND ABOVE DROP CEILING.

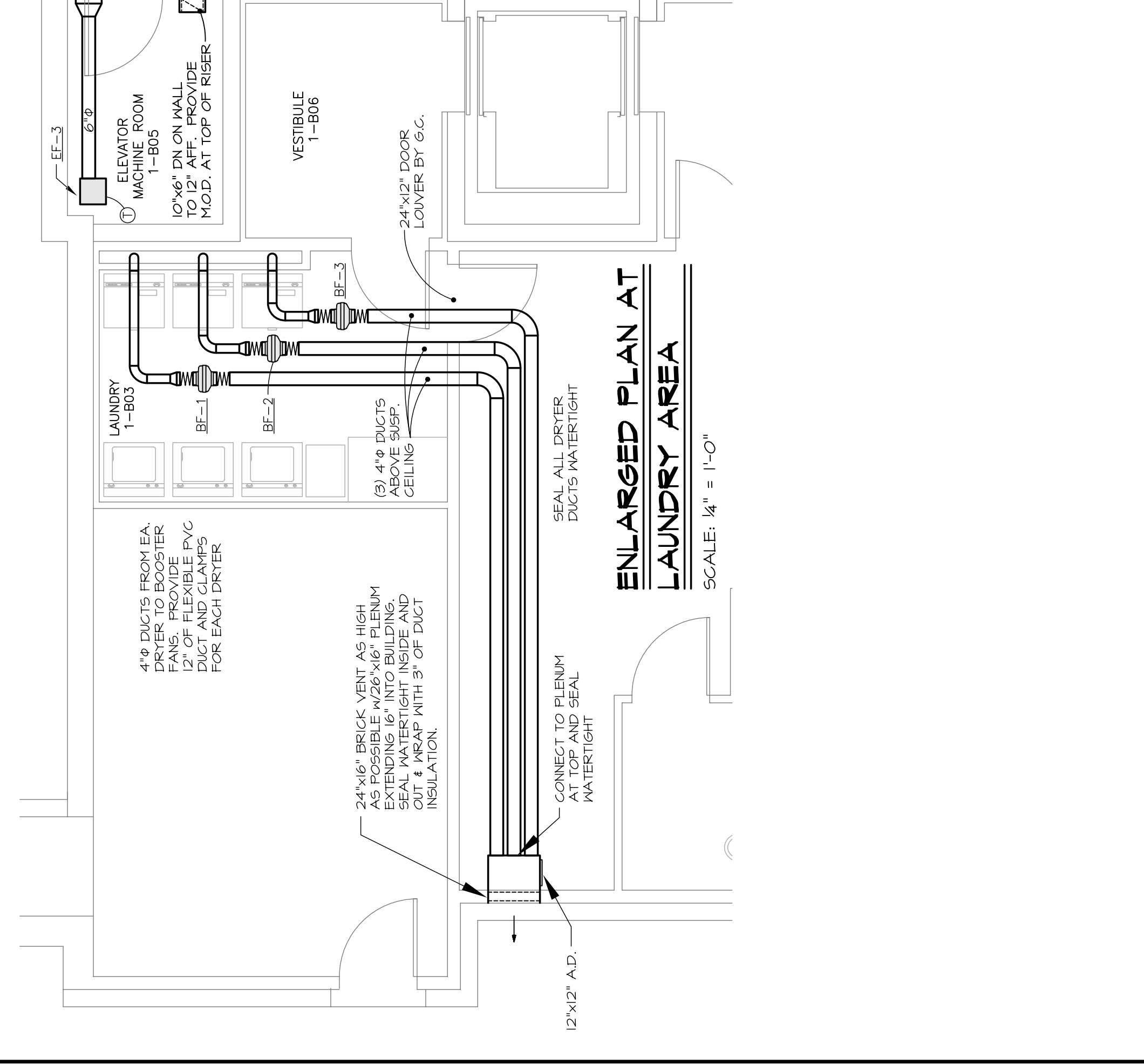
① 6" x 4" 54R UP W/FP @ 2nd FLOOR  
② 6" x 6" 54R UP W/FP @ 2nd FLOOR  
③ 6" x 6" EXHAUST UP W/FP @ 2nd FLOOR

ALL BATHROOM EXHAUST REGISTERS ARE 6" x 6" - 100 CFM.  
ALL LAVATORY EXHAUST REGISTERS ARE 6" x 6" - 25 CFM.



## PARTIAL ROOF PLAN

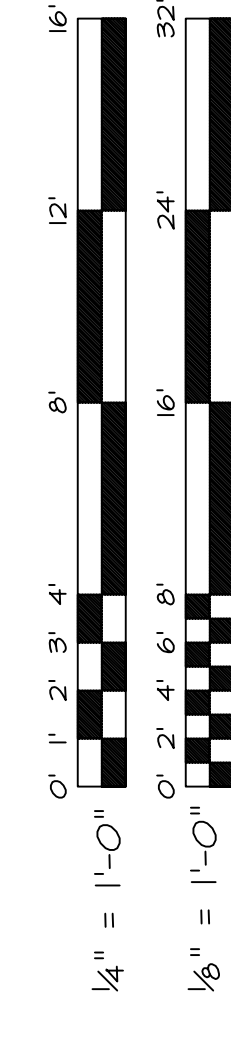
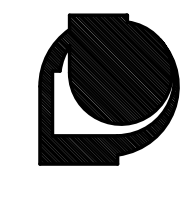
EXCLUSION ZONE - NO EXHAUSTS OR EXHAUSTS WITHIN THIS AREA.



## ENLARGED PLAN AT LAUNDRY AREA

SCALE: 1/4" = 1'-0"

**MECHANICAL SYSTEMS ENGINEERS**  
ROYAL FOREST CENTERS, UNIT #10  
100 FOREST FALLS DRIVE  
PORTLAND, ME 04106  
PHONE: (207) 846-1441  
VOICE: (207) 846-1443  
FAX: (207) 846-1443  
msengr.com  
© copyright 2006



## BASEMENT FLOOR

COMMUNITY