

# Pearl Place Building 1 & 2 Portland Maine

**Developer**  
Avesta Pearl Street One,  
L.P.

**Architect**  
Winton Scott Architects  
Landscape Architect  
Carroll Associates

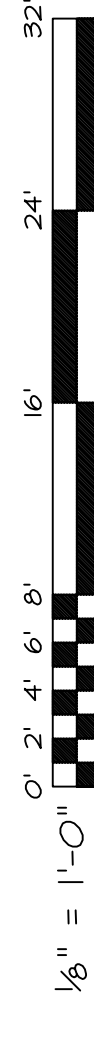
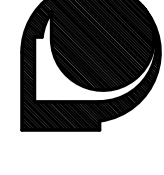
**Civil Engineer**  
Gorrill - Palmer  
**Structural Engineer**  
Becker Engineering  
**Mechanical Engineer**  
Mechanical Systems Engineers  
**Lighting / Electrical Engineer**  
Bartlett Design

**BUILDING 1**  
**SECOND AND THIRD  
FLOOR MECHANICAL  
PIPING PLANS**

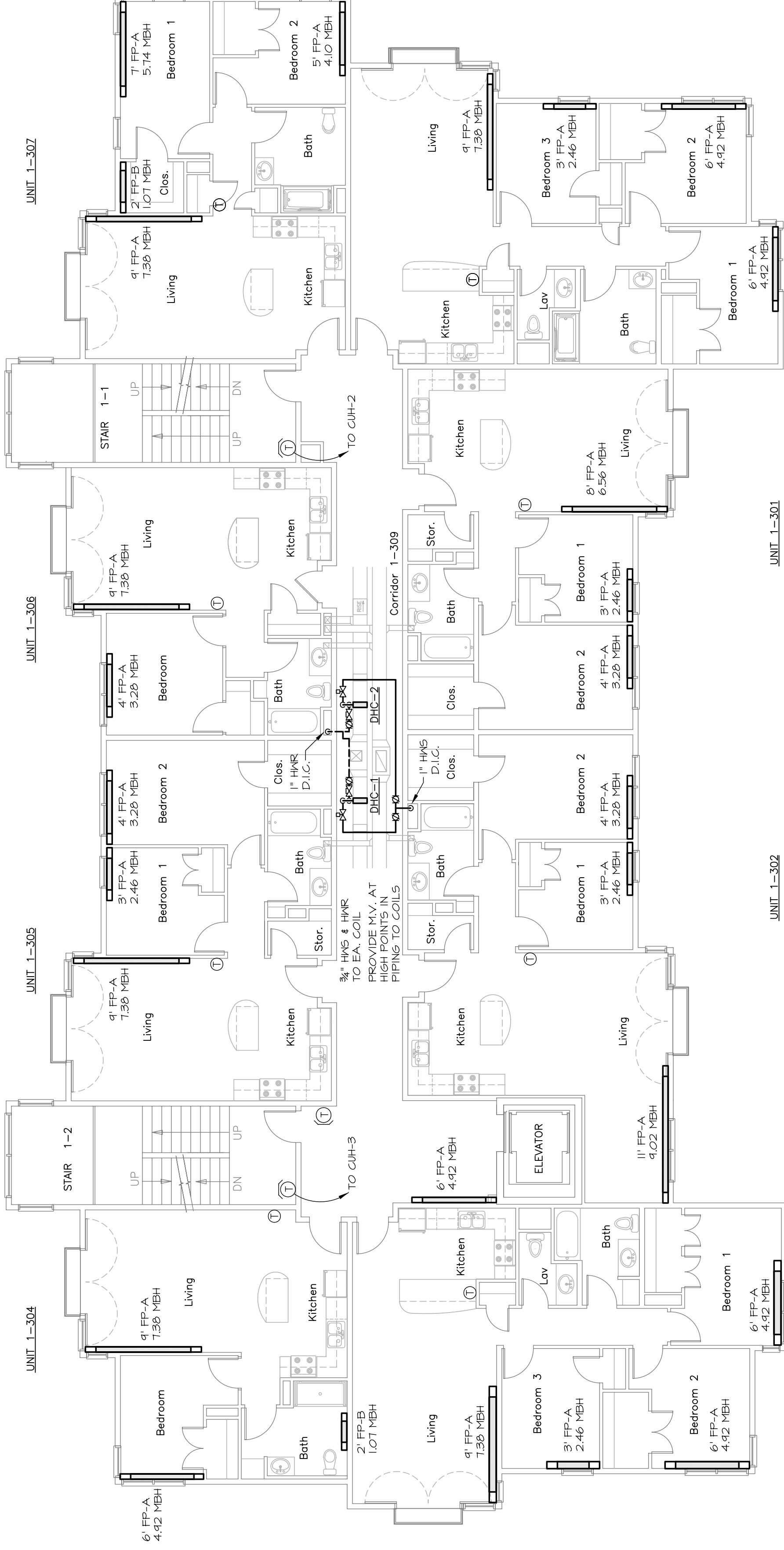
M2  
September 01, 2006

M.S.E. Proj\_0606

**MECHANICAL SYSTEMS ENGINEERS**  
ROYAL RIVER CENTER, UNIT #10  
100 FOREST FALLS DRIVE  
YORK, ME 04090  
PHONE: (207) 846-1441  
FAX: (207) 846-1443  
mece@comcast.net  
© copyright 2006



## SECOND FLOOR



## THIRD FLOOR

**NOTE:**  
ALL BRANCH LINES TO INDIVIDUAL HEATING ZONES TO HAVE 3/4" A.B.V.'S SET AT 2.0 GPM WITH THE FOLLOWING EXCEPTIONS -  
UNIT 1-303; 3.0 GPM

**NOTE:**  
ALL BRANCH PIPING TO INDIVIDUAL ZONES TO BE 3/4" UNLESS NOTED OTHERWISE

