

Pearl Place Building 1 & 2 Portland Maine

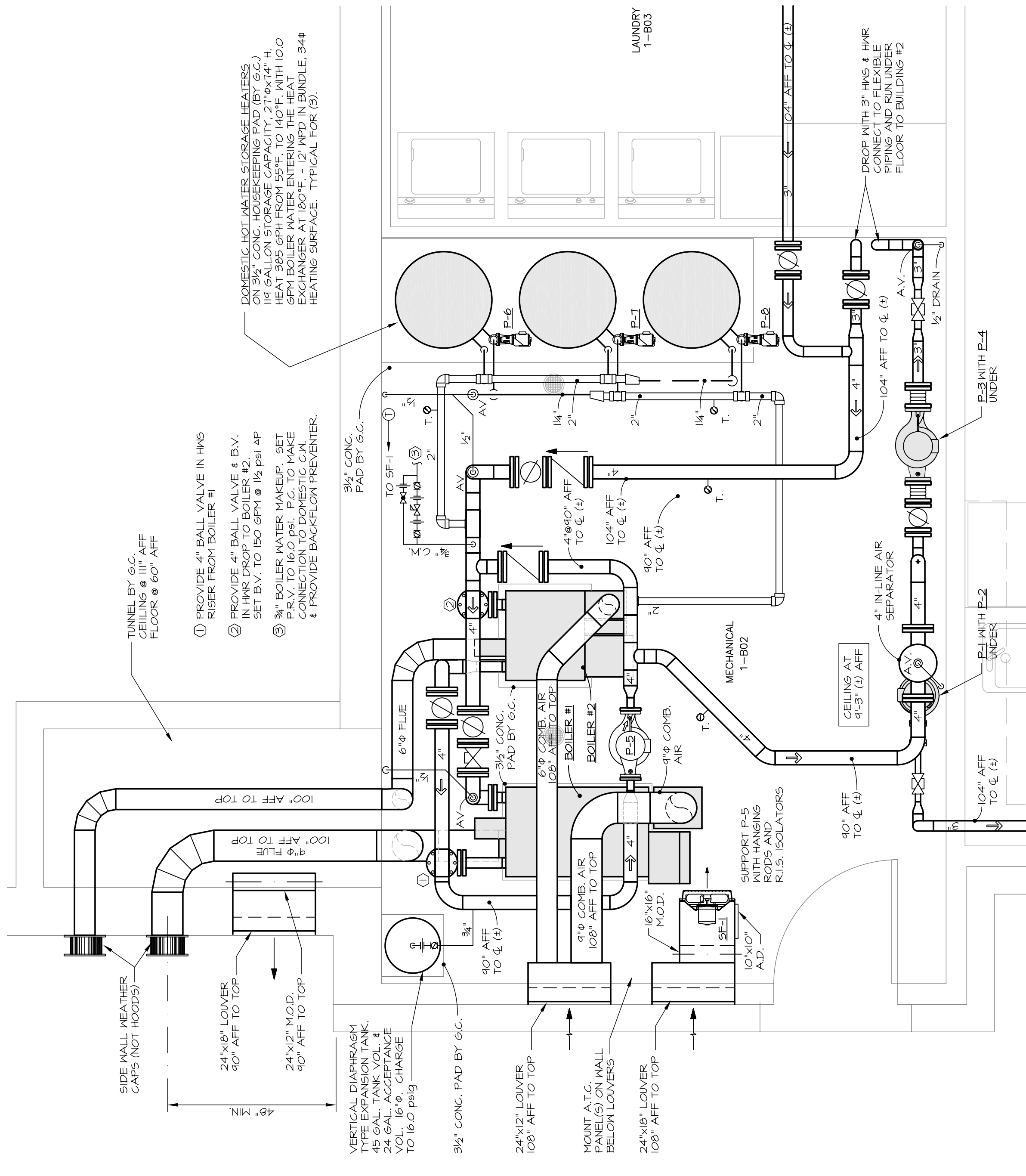
Developer
Avesta Pearl Street One,
L.P.

Architect
Winton Scott Architects
Landscape Architect
Carroll Associates
Civil Engineer
Gorrill - Palmer
Structural Engineer
Becker Engineering
Mechanical Engineer
Mechanical Systems Engineers
Lighting / Electrical Engineer
Bartlett Design

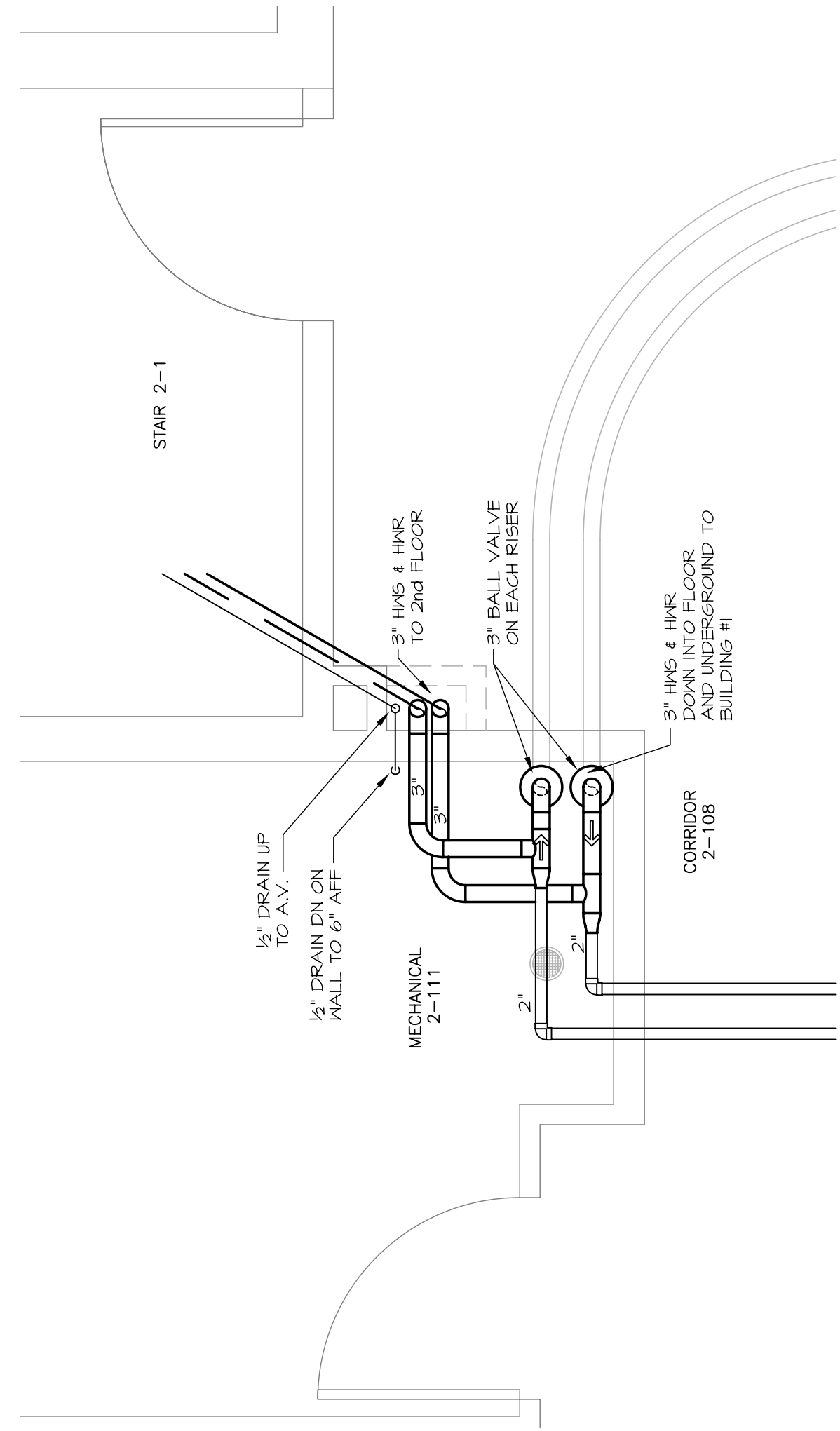
**BUILDINGS 1 & 2
MECHANICAL ROOM
PLANS & DETAILS**

M11
September 01, 2006

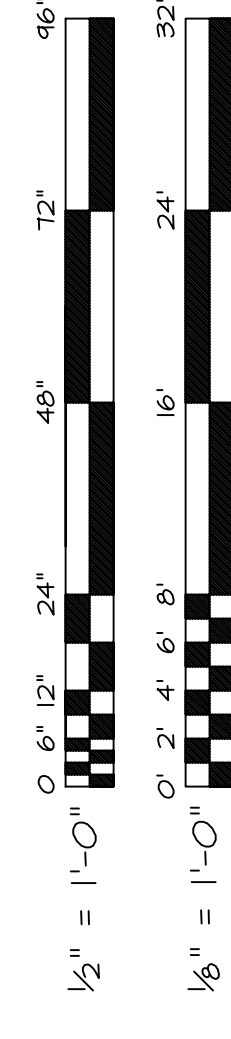
M.S.E. Proj_0606



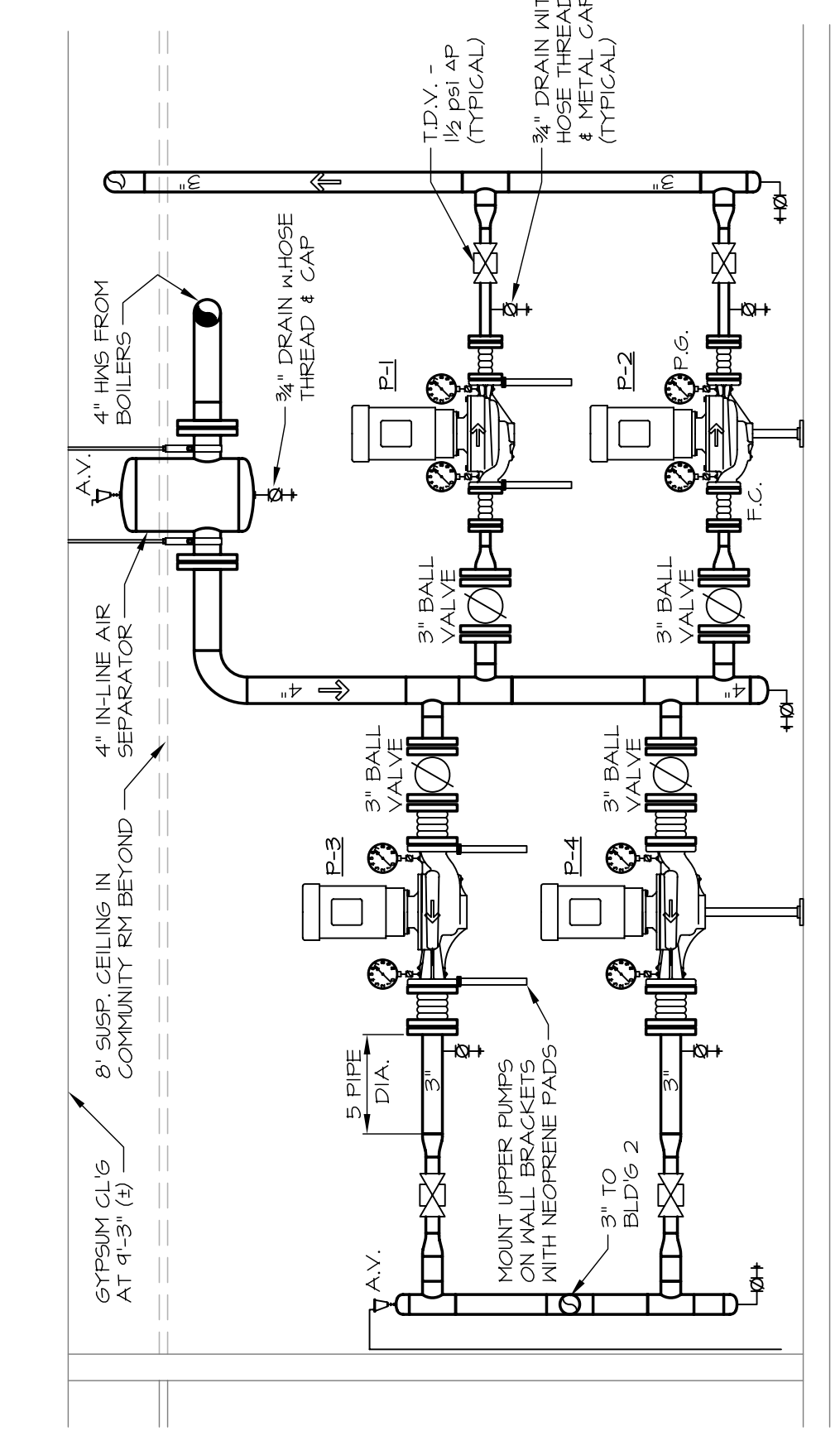
BUILDING #1 MECHANICAL ROOM - ENLARGED PLAN SCALE: 1/2" = 1'-0"



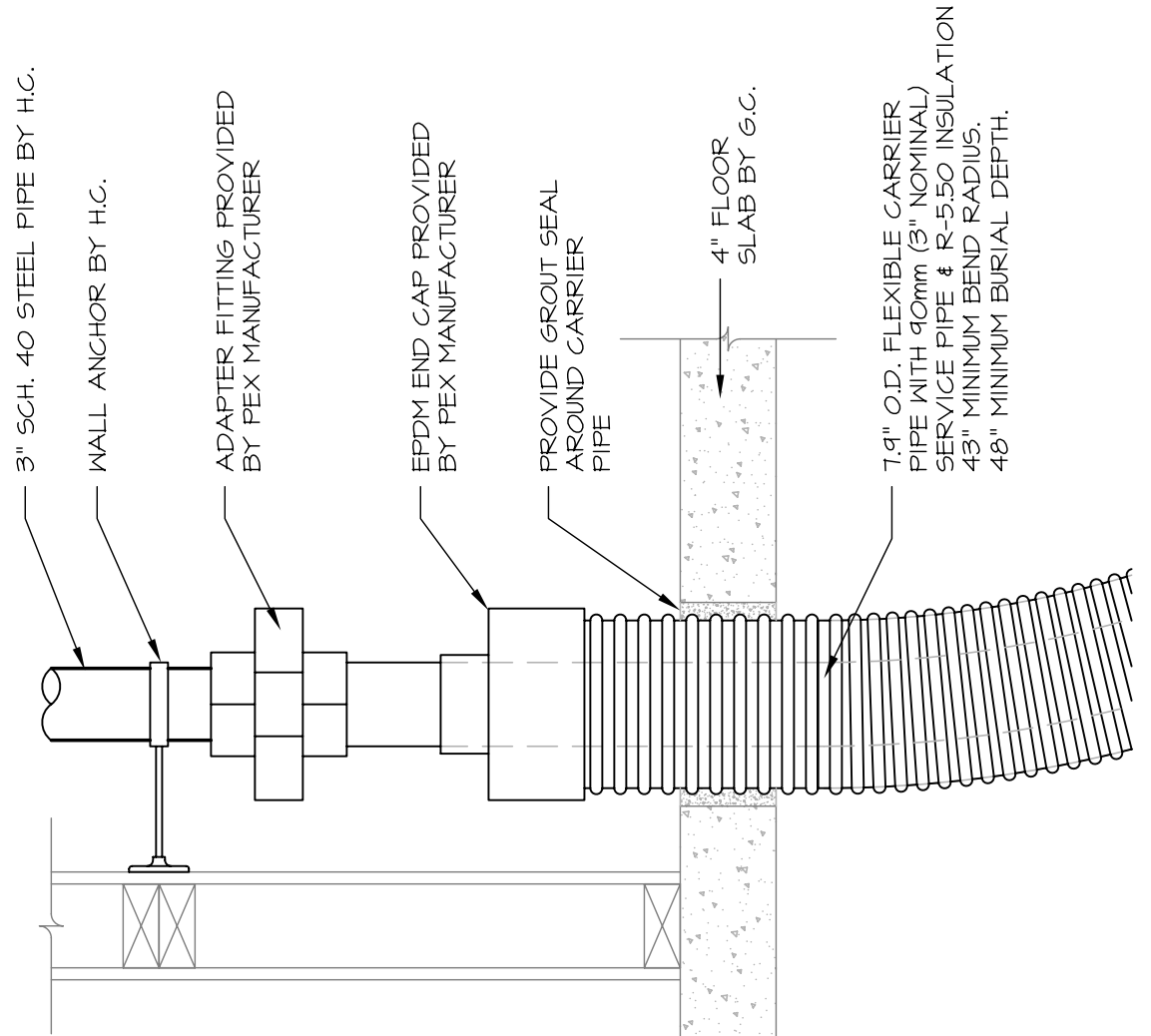
BUILDING #2 MECHANICAL ROOM - PARTIAL PLAN SCALE: 1/2" = 1'-0"



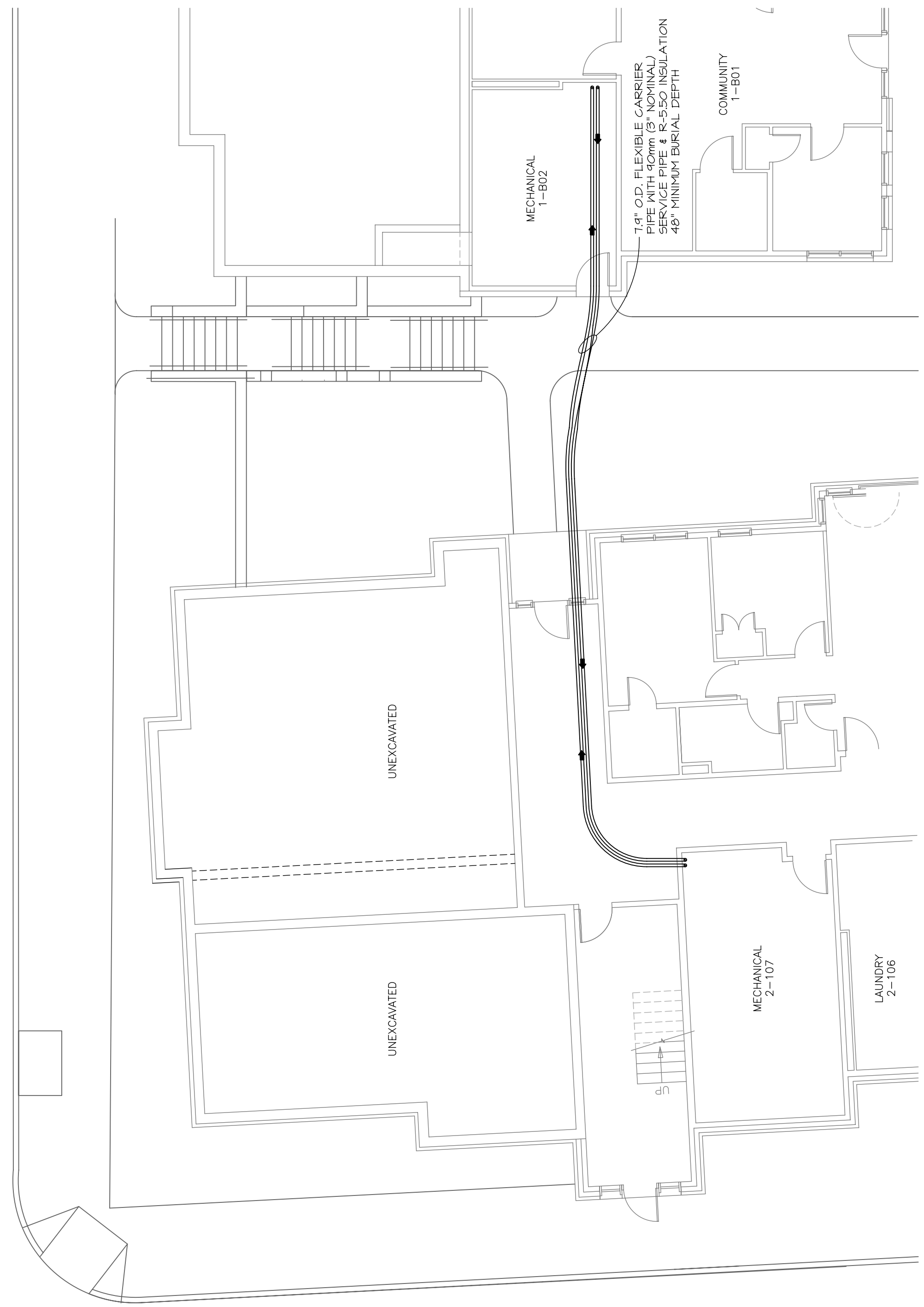
MECHANICAL SYSTEMS ENGINEERS
ROYAL RIVER CENTER, UNIT #10
100 FOREST FALLS DRIVE
PORTLAND, ME 04106
PHONE: (207) 846-1441
VOICE: (207) 846-1441
FAX: (207) 846-1443
msengr@comcast.net
© copyright 2006



ELEVATION AT PUMPS P-1 THROUGH P-4 SCALE: 1/2" = 1'-0"



PREINSULATED PEX TUBING AT FLOOR PENETRATIONS NO SCALE



MECHANICAL SITE PLAN WITH UNDERGROUND PIPING SCALE: 1/8" = 1'-0"