

Pearl Place Building 1 & 2 Portland Maine

Developer
Avesta Pearl Street One,
L.P.

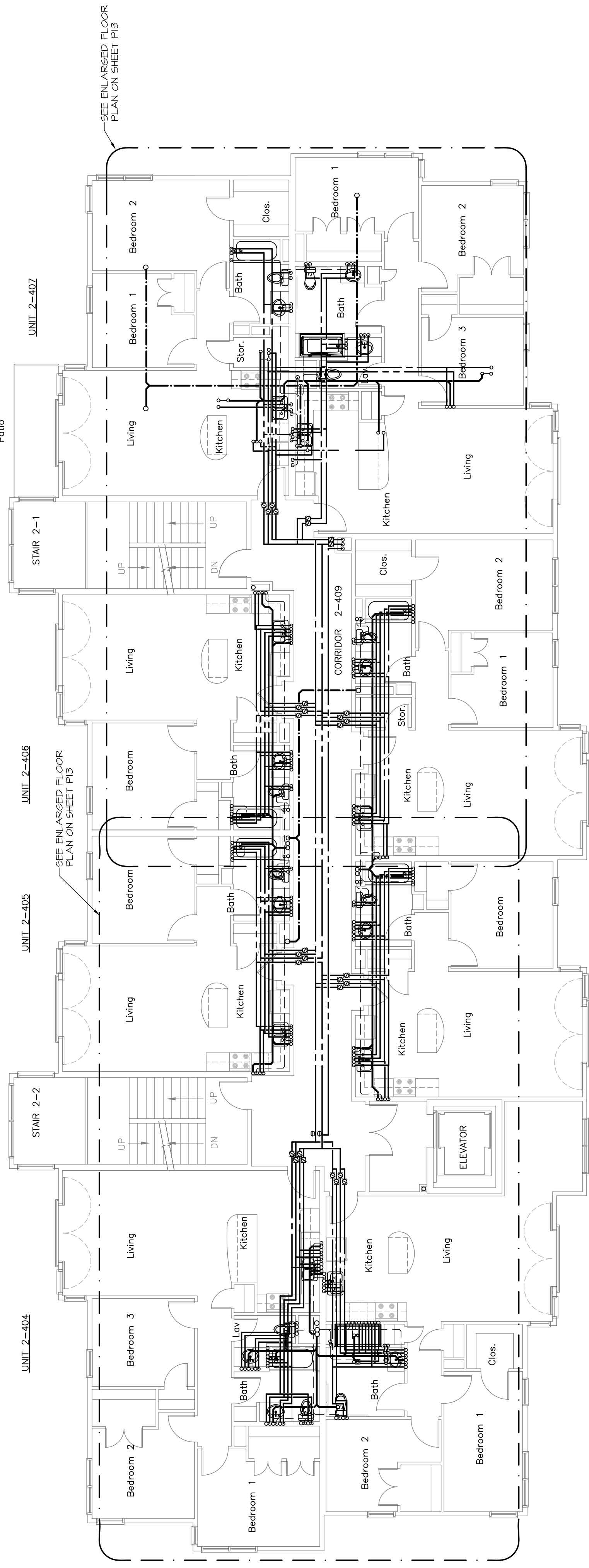
Architect
Winton Scott Architects
Landscape Architect
Carroll Associates

Civil Engineer
Gorrill - Palmer
Structural Engineer
Becker Engineering
Mechanical Engineer
Mechanical Systems Engineers
Lighting / Electrical Engineer
Bartlett Design

BUILDING 2
THIRD AND FOURTH
FLOOR
PLUMBING PLANS

P4
September 01, 2006

M.S.E. Proj_0606



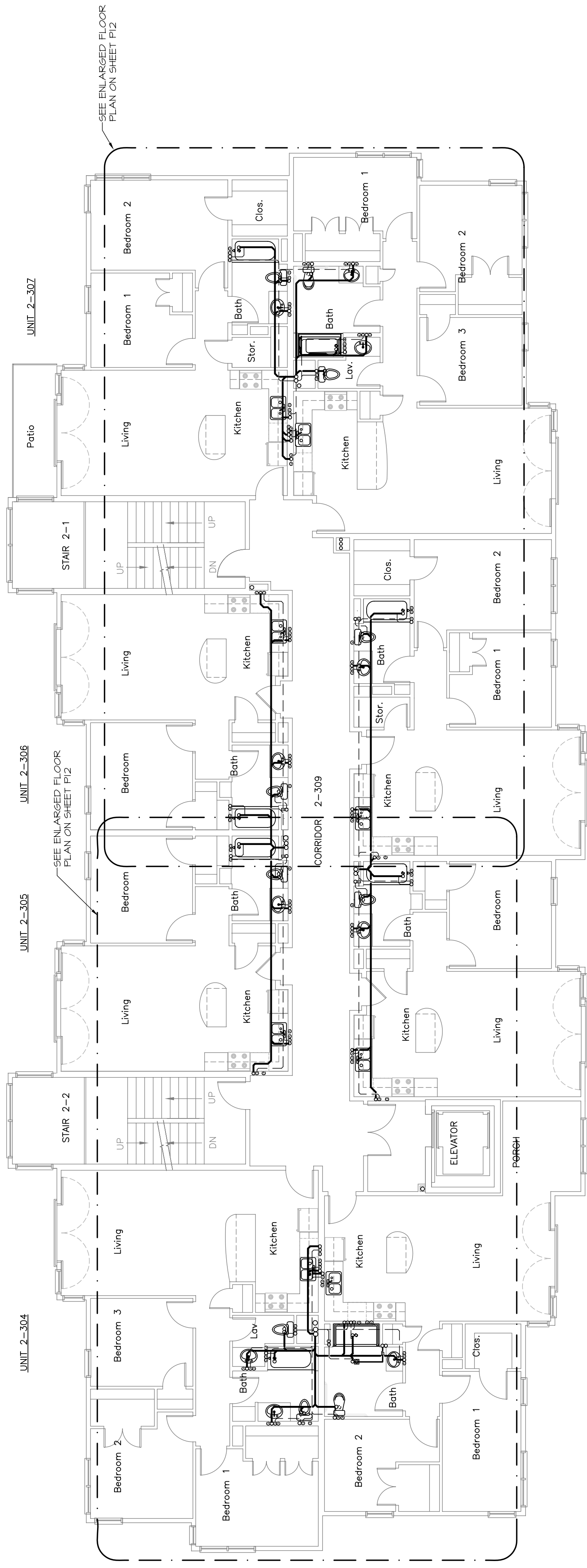
UNIT 2-408

UNIT 2-401

UNIT 2-402

UNIT 2-403

FOURTH FLOOR



UNIT 2-302

UNIT 2-305

UNIT 2-306

UNIT 2-304

UNIT 2-308

UNIT 2-301

UNIT 2-302

UNIT 2-303

THIRD FLOOR

MECHANICAL SYSTEMS ENGINEERS
ROYAL RIVER CENTER, UNIT #10
100 FOREST FALLS DRIVE
PORTLAND, ME 04106
PHONE: (207) 846-1441
VOICE: (207) 846-1443
FAX: (207) 846-1443
msengr@comcast.net
© copyright 2006

