

Pearl Place Building 1 & 2 Portland Maine

Developer
Avesta Pearl Street One,
L.P.

Architect
Winton Scott Architects
Landscape Architect
Carroll Associates

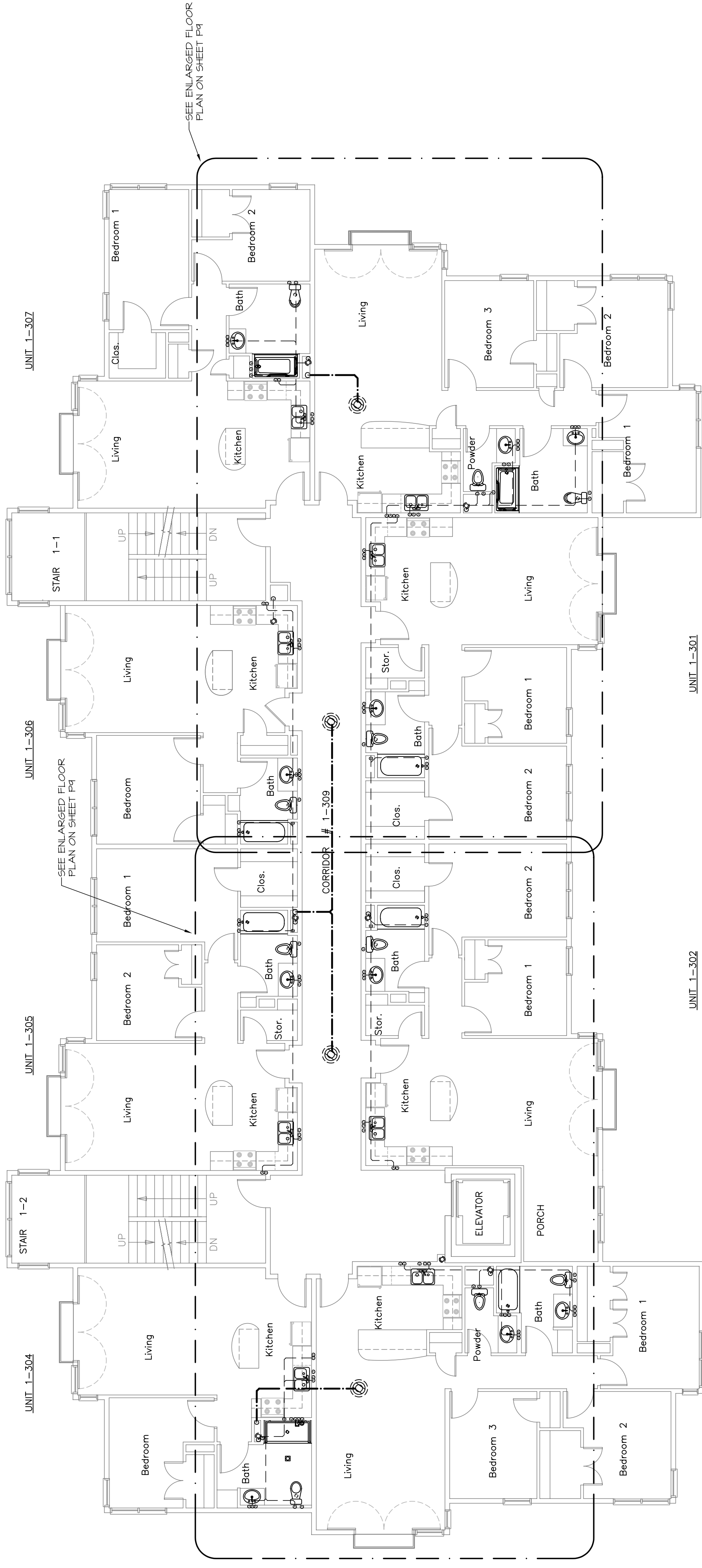
Civil Engineer
Gorrill - Palmer
Structural Engineer
Becker Engineering
Mechanical Engineer
Mechanical Systems Engineers
Lighting / Electrical Engineer
Bartlett Design

BUILDING 1
SECOND AND
THIRD FLOOR
PLUMBING PLANS

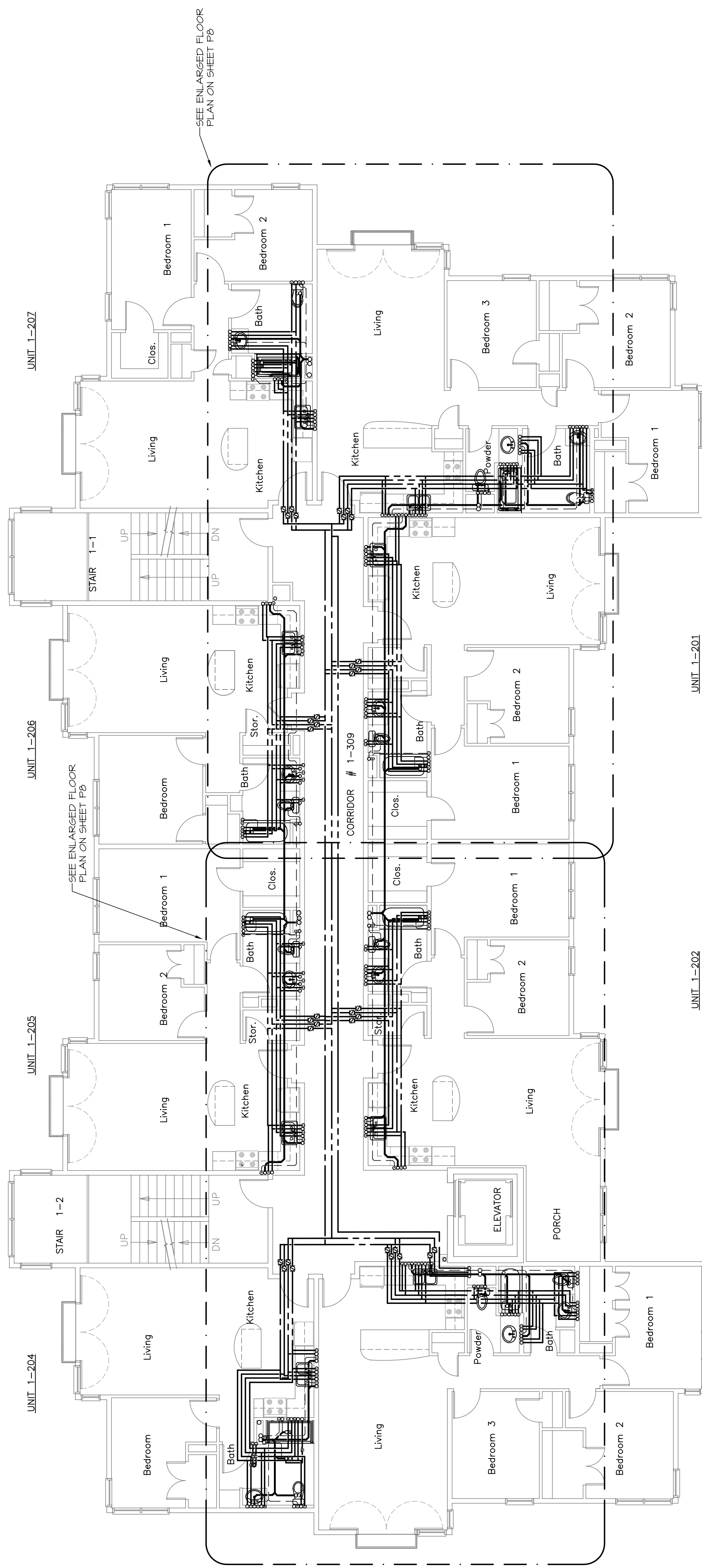
P2

September 01, 2006

M.S.E. Proj_0606



THIRD FLOOR



SECOND FLOOR

UNIT 1-208

UNIT 1-301

UNIT 1-202

UNIT 1-203

UNIT 1-207

UNIT 1-306

UNIT 1-205

UNIT 1-204

UNIT 1-307

UNIT 1-305

UNIT 1-206

UNIT 1-201

UNIT 1-308

UNIT 1-304

UNIT 1-203

UNIT 1-202

UNIT 1-306

UNIT 1-302

UNIT 1-207

UNIT 1-208

UNIT 1-305

UNIT 1-303

UNIT 1-204

UNIT 1-201

UNIT 1-308

UNIT 1-307

UNIT 1-205

UNIT 1-203

UNIT 1-306

UNIT 1-304

UNIT 1-206

UNIT 1-208

UNIT 1-305

UNIT 1-301

UNIT 1-207

UNIT 1-204

UNIT 1-308

UNIT 1-306

UNIT 1-205

UNIT 1-201

UNIT 1-307

UNIT 1-303

UNIT 1-204

UNIT 1-203

UNIT 1-306

UNIT 1-302

UNIT 1-207

UNIT 1-208

UNIT 1-305

UNIT 1-304

UNIT 1-206

UNIT 1-201

UNIT 1-308

UNIT 1-307

UNIT 1-205

UNIT 1-203

UNIT 1-306

UNIT 1-301

UNIT 1-207

UNIT 1-204

UNIT 1-305

UNIT 1-303

UNIT 1-204

UNIT 1-201

UNIT 1-308

UNIT 1-306

UNIT 1-205

UNIT 1-208

UNIT 1-307

UNIT 1-304

UNIT 1-206

UNIT 1-203

UNIT 1-306

UNIT 1-302

UNIT 1-207

UNIT 1-208

UNIT 1-305

UNIT 1-301

UNIT 1-207

UNIT 1-204

UNIT 1-308

UNIT 1-306

UNIT 1-205

UNIT 1-201

UNIT 1-307

UNIT 1-303

UNIT 1-204

UNIT 1-203

UNIT 1-306

UNIT 1-302

UNIT 1-207

UNIT 1-208

UNIT 1-305

UNIT 1-304

UNIT 1-206

UNIT 1-201

UNIT 1-308

UNIT 1-307

UNIT 1-205

UNIT 1-203

UNIT 1-306

UNIT 1-301

UNIT 1-207

UNIT 1-204

UNIT 1-305

UNIT 1-303

UNIT 1-204

UNIT 1-201

UNIT 1-308

UNIT 1-306

UNIT 1-205

UNIT 1-208

UNIT 1-307

UNIT 1-304

UNIT 1-206

UNIT 1-203

UNIT 1-306

UNIT 1-302

UNIT 1-207

UNIT 1-208

UNIT 1-305

UNIT 1-301

UNIT 1-207

UNIT 1-204

UNIT 1-308

UNIT 1-306

UNIT 1-205

UNIT 1-201

UNIT 1-307

UNIT 1-303

UNIT 1-204

UNIT 1-203

UNIT 1-306

UNIT 1-302

UNIT 1-207

UNIT 1-208

UNIT 1-305

UNIT 1-304

UNIT 1-206

UNIT 1-201

UNIT 1-308

UNIT 1-307

UNIT 1-205

UNIT 1-203

UNIT 1-306

UNIT 1-301

UNIT 1-207

UNIT 1-204

UNIT 1-305

UNIT 1-303

UNIT 1-204

UNIT 1-201

UNIT 1-308

UNIT 1-306

UNIT 1-205

UNIT 1-208

UNIT 1-307

UNIT 1-304

UNIT 1-206

UNIT 1-203

UNIT 1-306

UNIT 1-302

UNIT 1-207

UNIT 1-208

UNIT 1-305

UNIT 1-301

UNIT 1-207

UNIT 1-204

UNIT 1-308

UNIT 1-306

UNIT 1-205

UNIT 1-201

UNIT 1-307

UNIT 1-303

UNIT 1-204

UNIT 1-203

UNIT 1-306

UNIT 1-302

UNIT 1-207

UNIT 1-208

UNIT 1-305

UNIT 1-304

UNIT 1-206

UNIT 1-201

UNIT 1-308

UNIT 1-307

UNIT 1-205

UNIT 1-203

UNIT 1-306

UNIT 1-301

UNIT 1-207

UNIT 1-204

UNIT 1-305

UNIT 1-303

UNIT 1-204

UNIT 1-201

UNIT 1-308

UNIT 1-306

UNIT 1-205

UNIT 1-208

UNIT 1-307

UNIT 1-304

UNIT 1-206

UNIT 1-203

UNIT 1-306

UNIT 1-302

UNIT 1-207

UNIT 1-208

UNIT 1-305

UNIT 1-301

UNIT 1-207

UNIT 1-204

UNIT 1-308

UNIT 1-306

UNIT 1-205

UNIT 1-201

UNIT 1-307

UNIT 1-303

UNIT 1-204

UNIT 1-203

UNIT 1-306

UNIT 1-302

UNIT 1-207

UNIT 1-208

UNIT 1-305

UNIT 1-304

UNIT 1-206

UNIT 1-201

UNIT 1-308

UNIT 1-307

UNIT 1-205

UNIT 1-203

UNIT 1-306

UNIT 1-301

UNIT 1-207

UNIT 1-204

UNIT 1-305

UNIT 1-303

UNIT 1-204

UNIT 1-201

UNIT 1-308

UNIT 1-306

UNIT 1-205

UNIT 1-208

UNIT 1-307

UNIT 1-304

UNIT 1-206

UNIT 1-203

UNIT 1-306

UNIT 1-302

UNIT 1-207

UNIT 1-208

UNIT 1-305

UNIT 1-301

UNIT 1-207

UNIT 1-204

UNIT 1-308

UNIT 1-306

UNIT 1-205

UNIT 1-201

UNIT 1-307

UNIT 1-303

UNIT 1-204

UNIT 1-203

UNIT 1-306

UNIT 1-302

UNIT 1-207

UNIT 1-208

UNIT 1-305

UNIT 1-304

UNIT 1-206

UNIT 1-201

UNIT 1-308

UNIT 1-307

UNIT 1-205

UNIT 1-203

UNIT 1-306

UNIT 1-301

UNIT 1-207

UNIT 1-204

UNIT 1-305