

# Pearl Place Building 1 & 2 Portland Maine

**Developer**  
Avesta Pearl Street One,  
L.P.

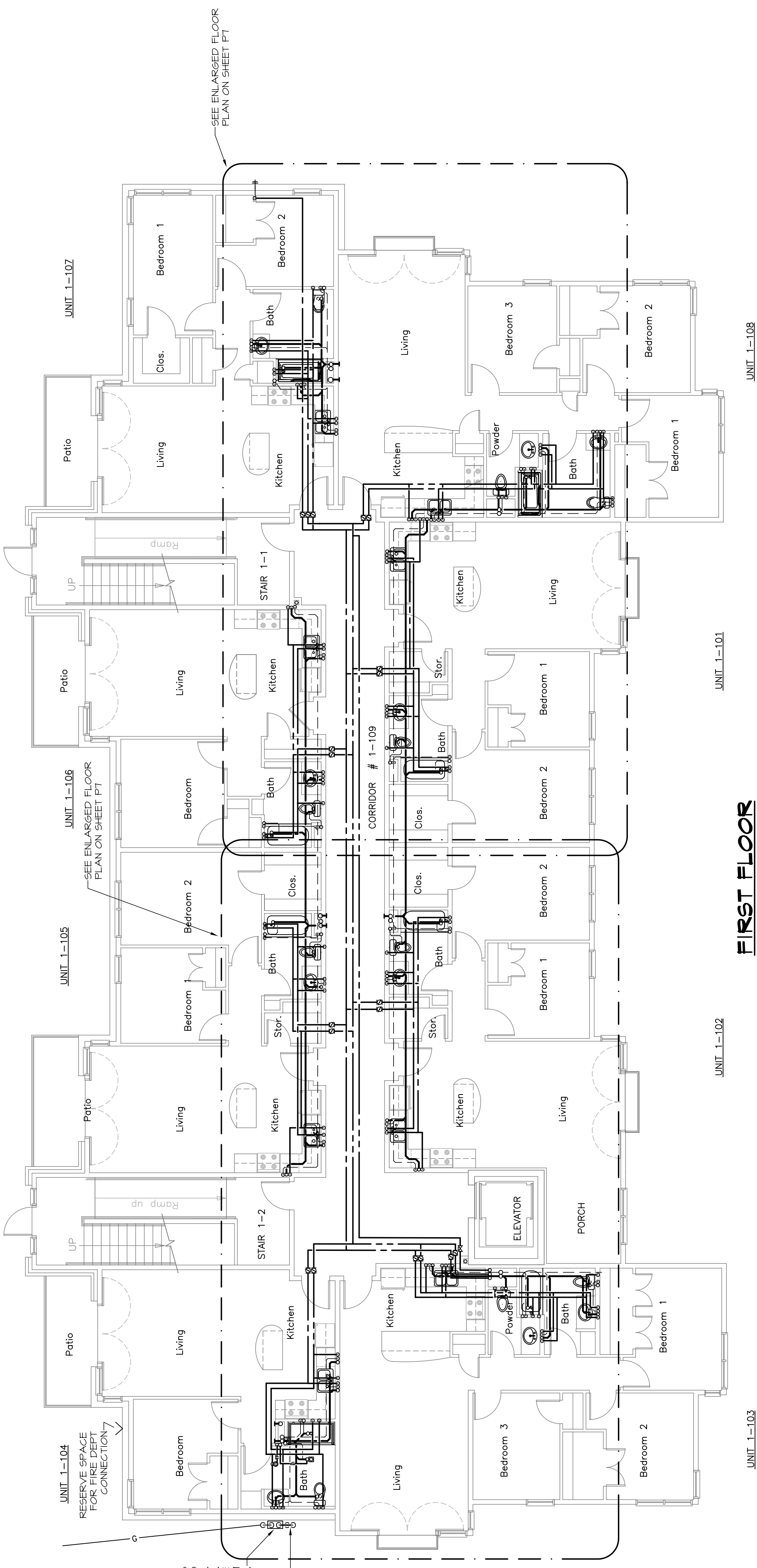
**Architect**  
Winton Scott Architects  
Landscape Architect  
Carroll Associates  
**Civil Engineer**  
Gorrill - Palmer  
**Structural Engineer**  
Becker Engineering  
**Mechanical Engineer**  
Mechanical Systems Engineers  
**Lighting / Electrical Engineer**  
Bartlett Design

**BUILDING 1**  
BASEMENT AND  
FIRST FLOOR  
PLUMBING PLANS

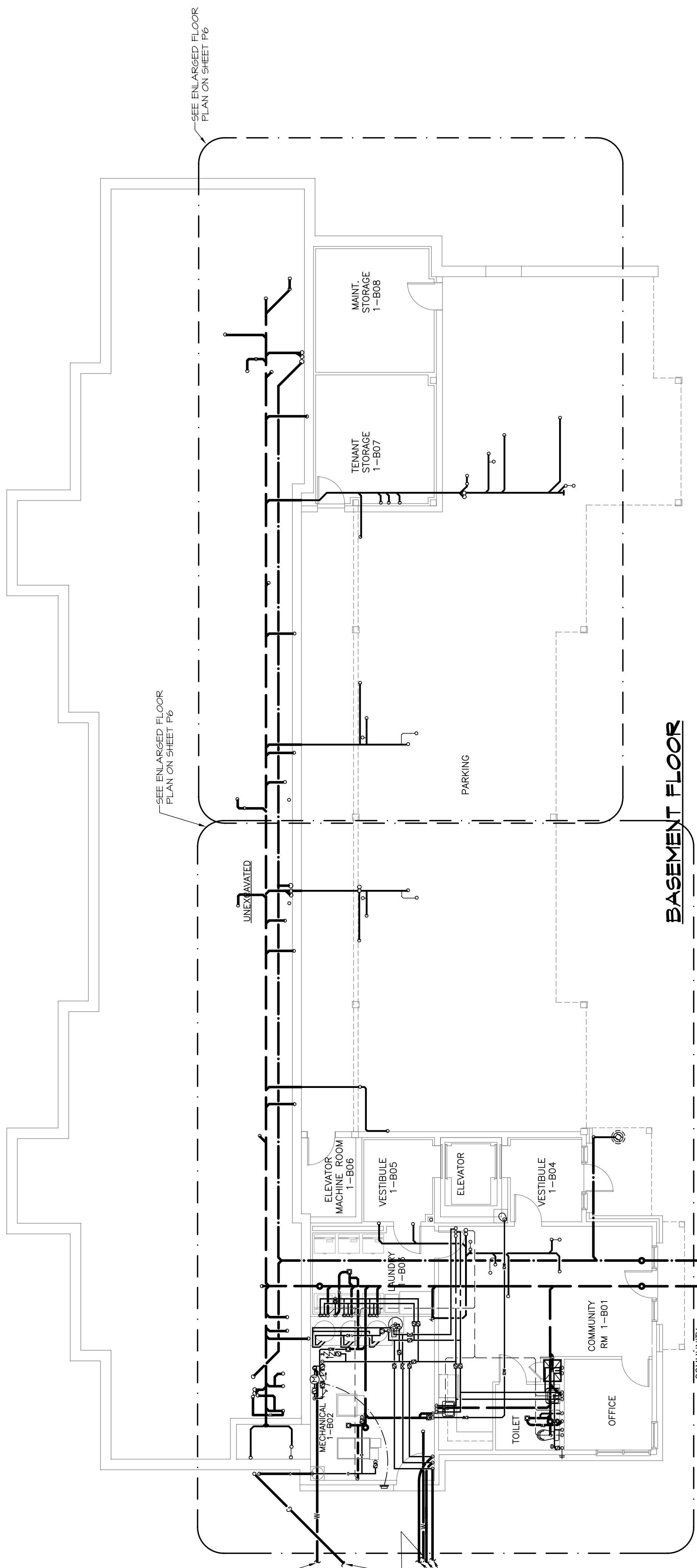
P1

September 01, 2006

M.S.E. Proj. 0606



## FIRST FLOOR



## BASEMENT FLOOR

GAS METERS REGULATORS AND PIPE TO STREET MAIN PROVIDED BY GAS SUPPLIER. EXACT LOCATION TO BE DETERMINED IN THE FIELD. IF NOT POSSIBLE THEN PROVIDE SECOND REGULATOR DOWNSTREAM OF METER AND SET TO 12" WC.

2" x 3" x 6 DN

TO WATER MAIN BY GC  
UNDERGROUND PIPING TO GENERATOR BY GC MATERIAL AS PER GAS SUPPLIER RECOMMENDATIONS. CONNECT TO GENERATOR WITH BRASS BALL VALVE. BALL VALVE SHALL BE LOCKING TYPE IF NOT CONTAINED WITHIN HOUSING.  
SPRINKLER TO WATER MAIN BY GC  
3" CH. 2" HX 4" RHM CONTINUE TO BUILDING #2

SEE SITE PLAN FOR CONTINUATION



**MECHANICAL SYSTEMS ENGINEERS**  
ROYAL RIVER CENTER, UNIT #10  
100 FOREST FALLS DRIVE  
PORTLAND, ME 04106  
PHONE: (207) 846-1441  
VOICE: (207) 846-1443  
FAX: (207) 846-1443  
mses@comcast.net  
© copyright 2006

