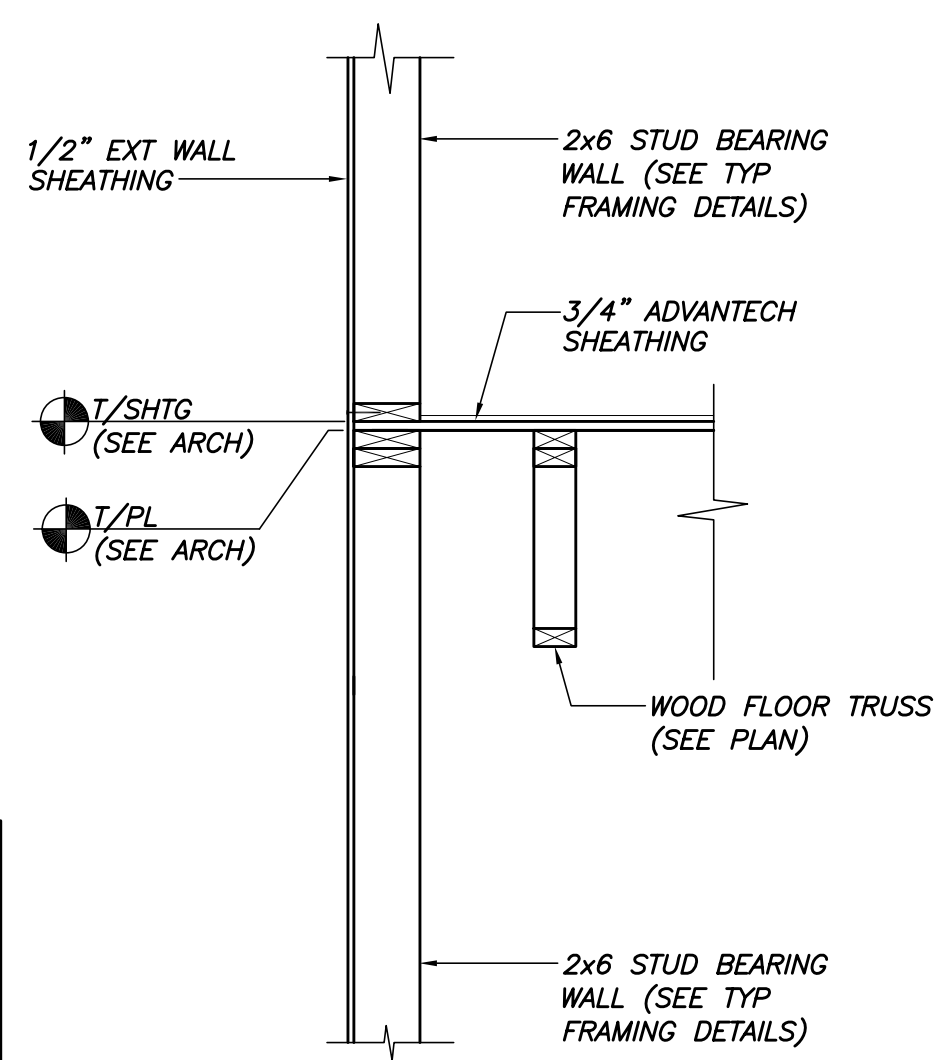


SECTION 1
3/4"=1'-0"

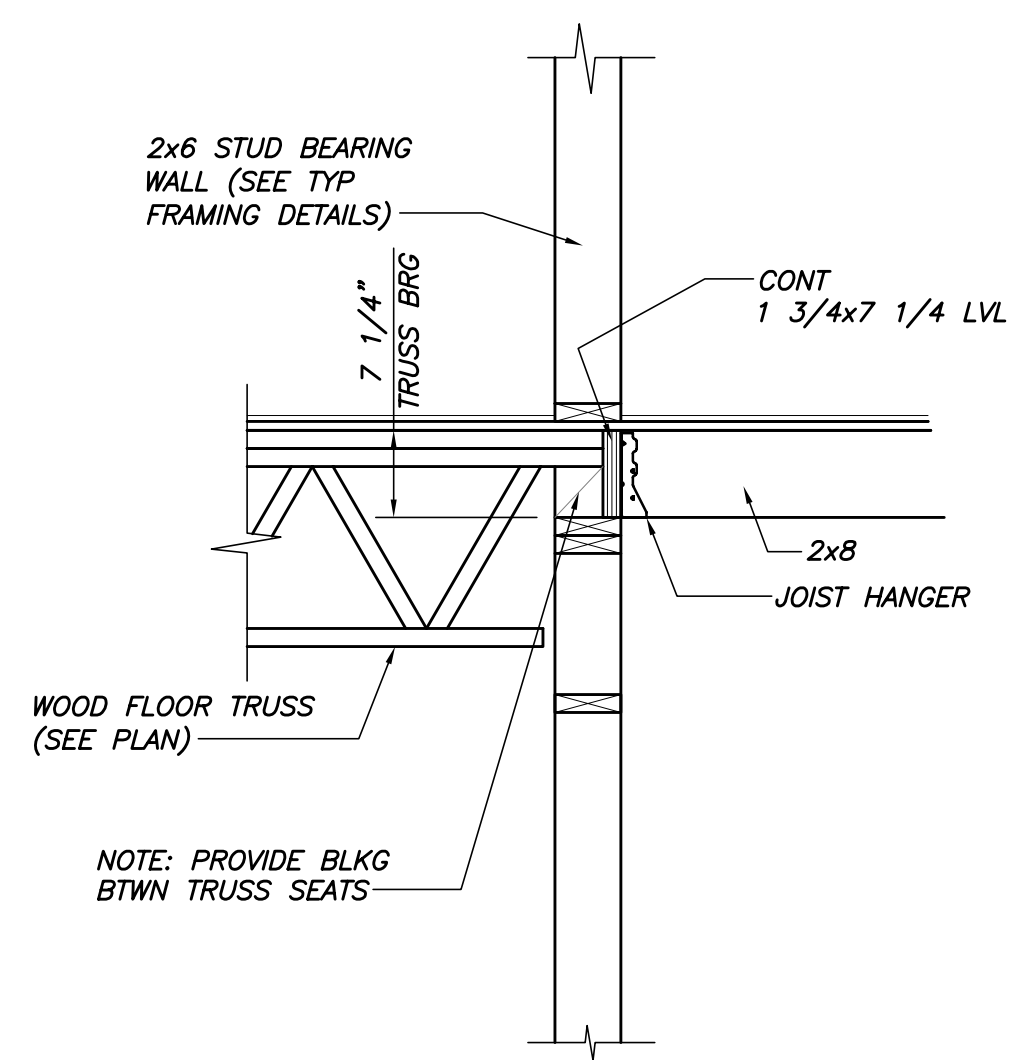


SECTION 1A
3/4"=1'-0"

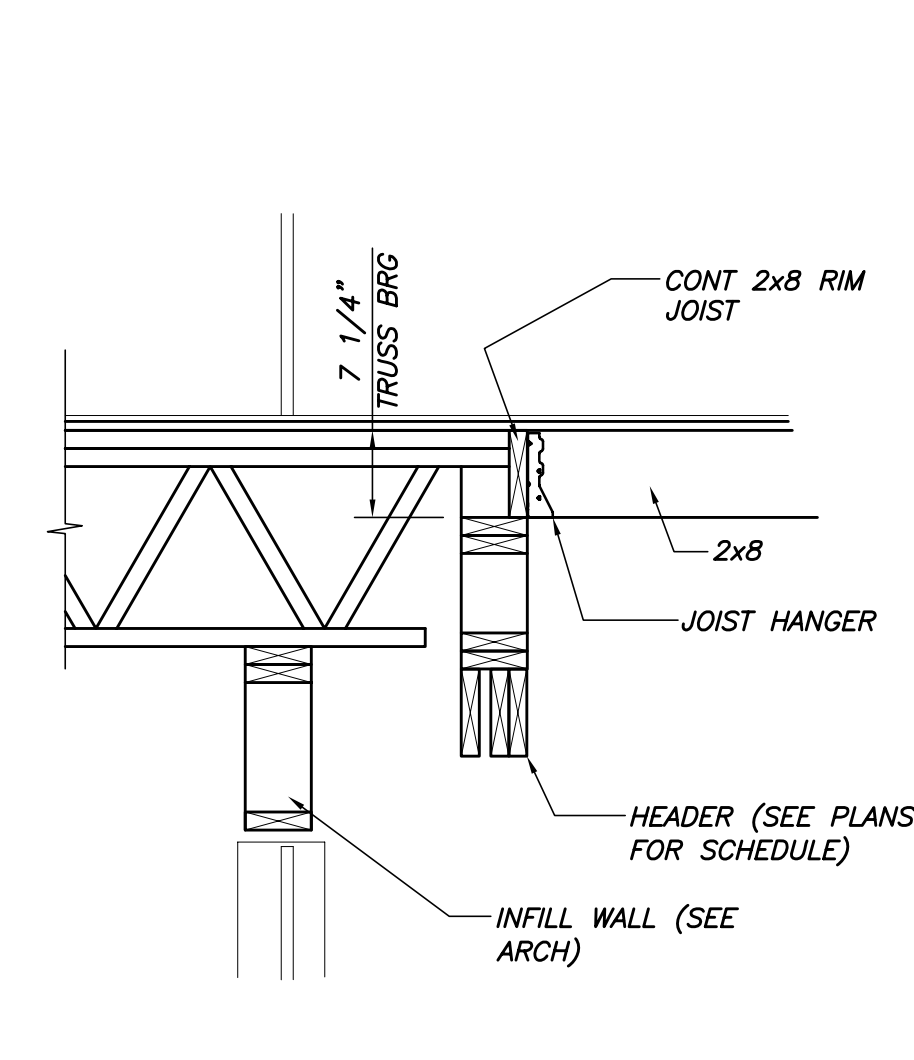
TYP FLOOR TRUSS PERMANENT BRACING

CONT 2x8 STRONGBACK @10'-0" O.C. MAX. W/3-10d NAILS TO UPRIGHT (TYP). LAP MIN 6'-0" & FASTEN TO BEARING WALL, EA END

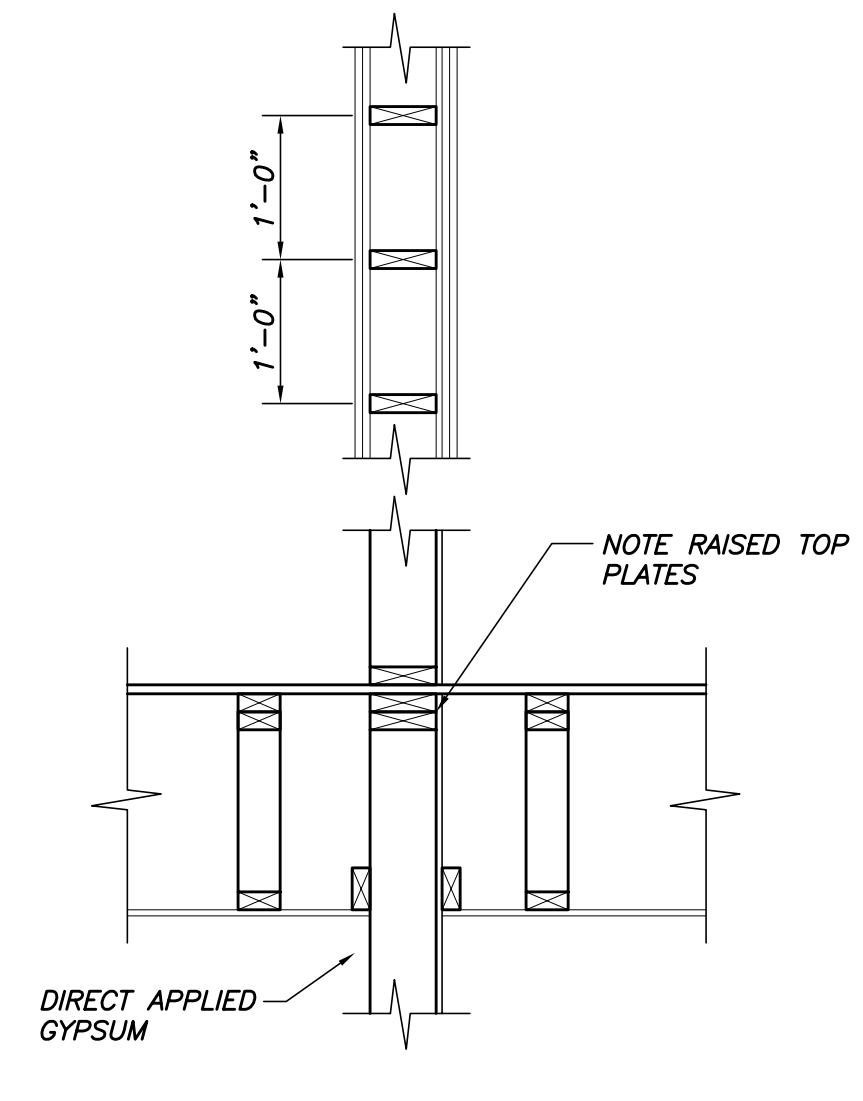
UPRIGHT IN TRUSS OR FIELD APPLIED 2x4 UPRIGHT W/2-16d NAILS TO TRUSS, TOP & BOT FINAL BRACING REQUIREMENTS PER TRUSS MANUFACTURER



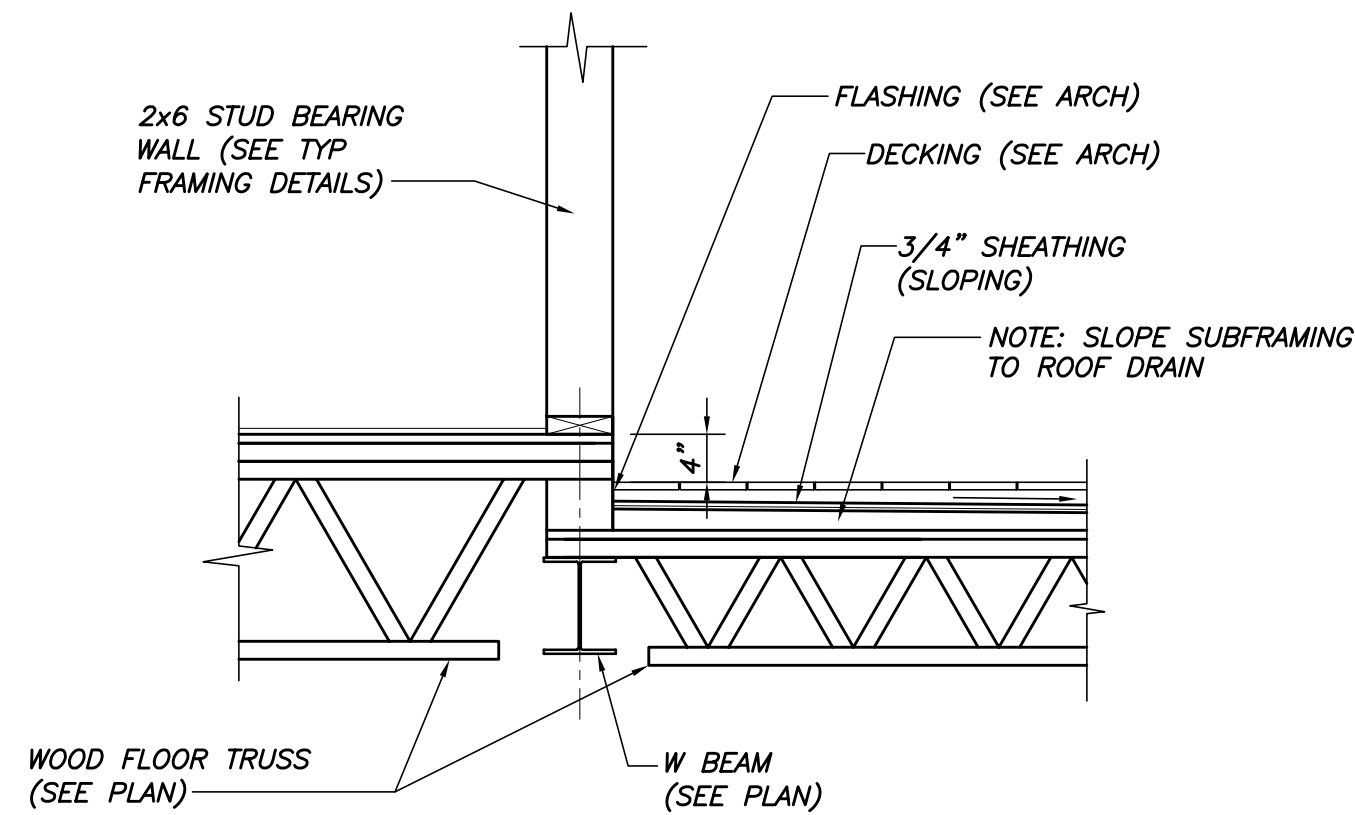
SECTION 2
3/4"=1'-0"



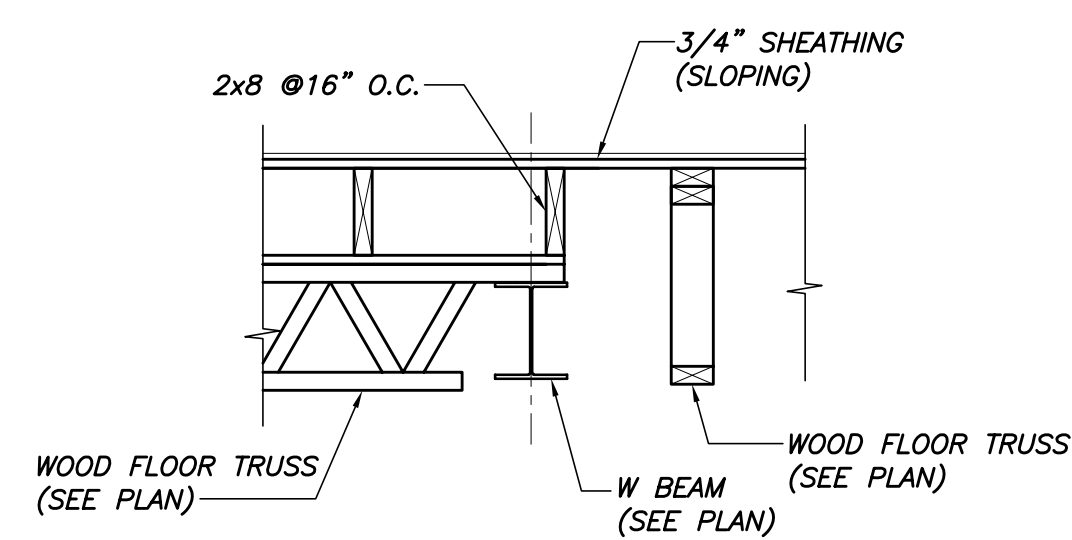
SECTION 3
3/4"=1'-0"



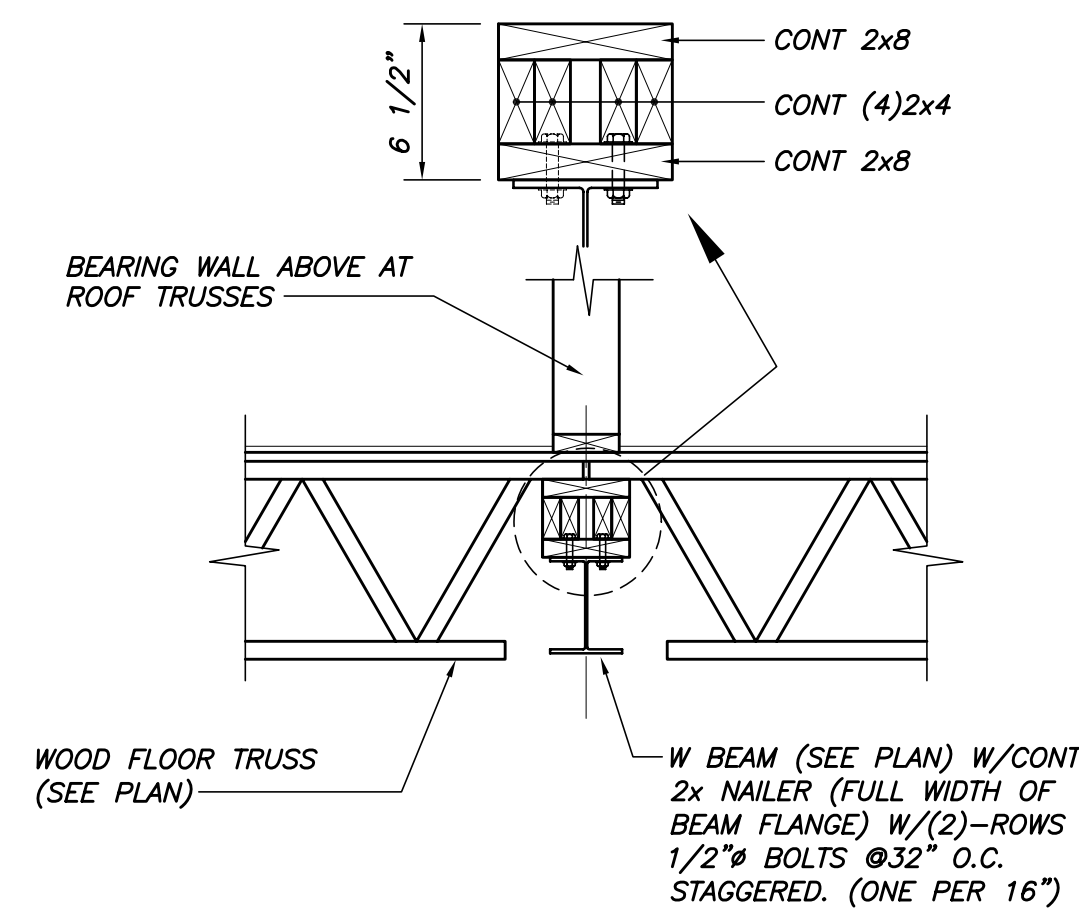
SECTION 4
3/4"=1'-0"



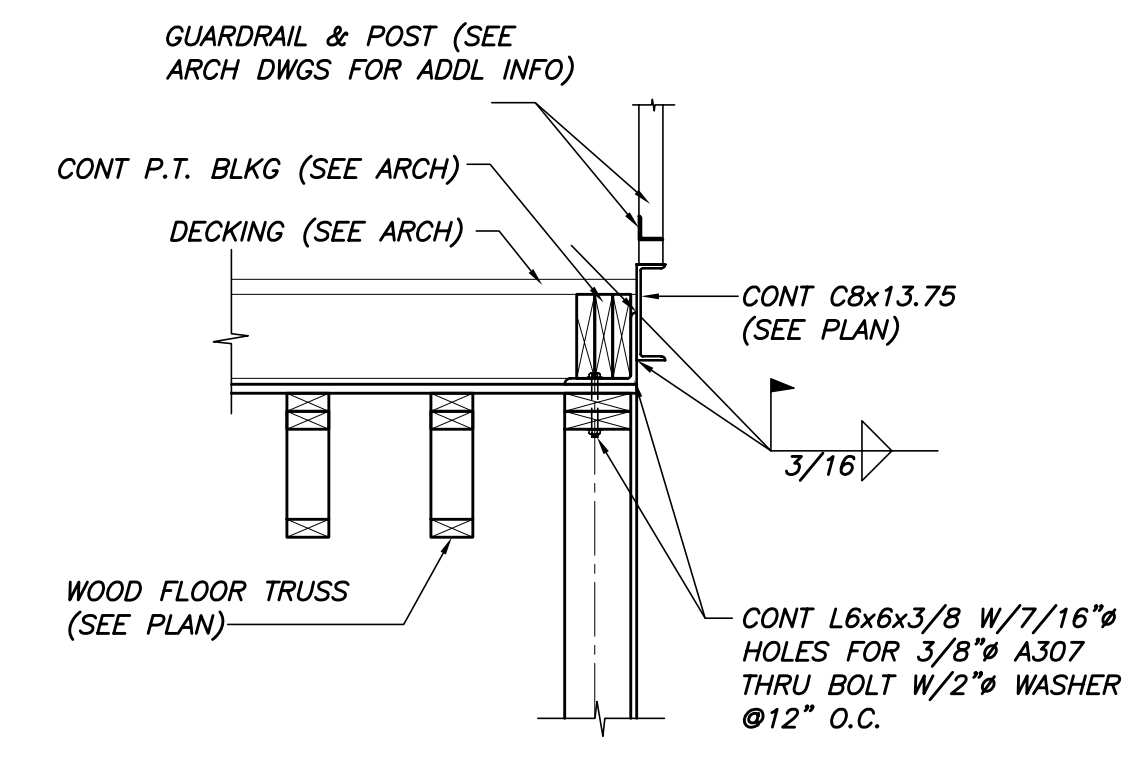
SECTION 5
3/4"=1'-0"



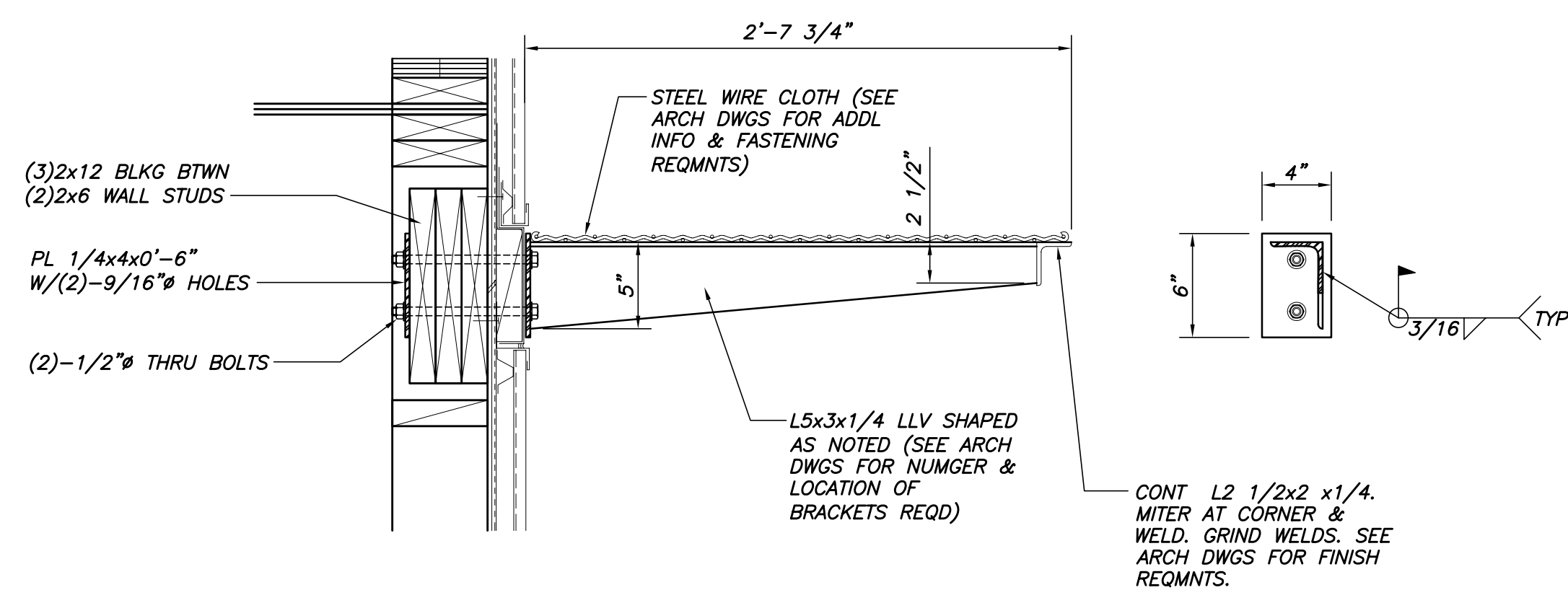
SECTION 6
3/4"=1'-0"



SECTION 7
3/4"=1'-0"



SECTION 8
3/4"=1'-0"



SECTION 9
1 1/2"=1'-0"

TYP HIGH AWNING BRACKET DETAIL

Pearl Place Building 1 & 2

Portland Maine

Developer
Avesta Pearl Street One, L.P.

Architect
Winton Scott Architects

Landscape Architect
Carroll Associates

Structural Engineer
Becker Structural Engineers

Framing Sections & Details
S3.2

Sept 1, 2006

Scale:Noted