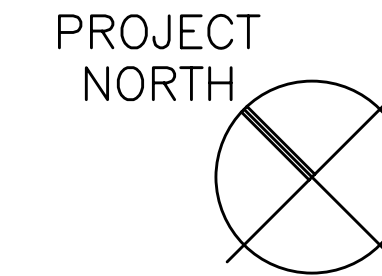
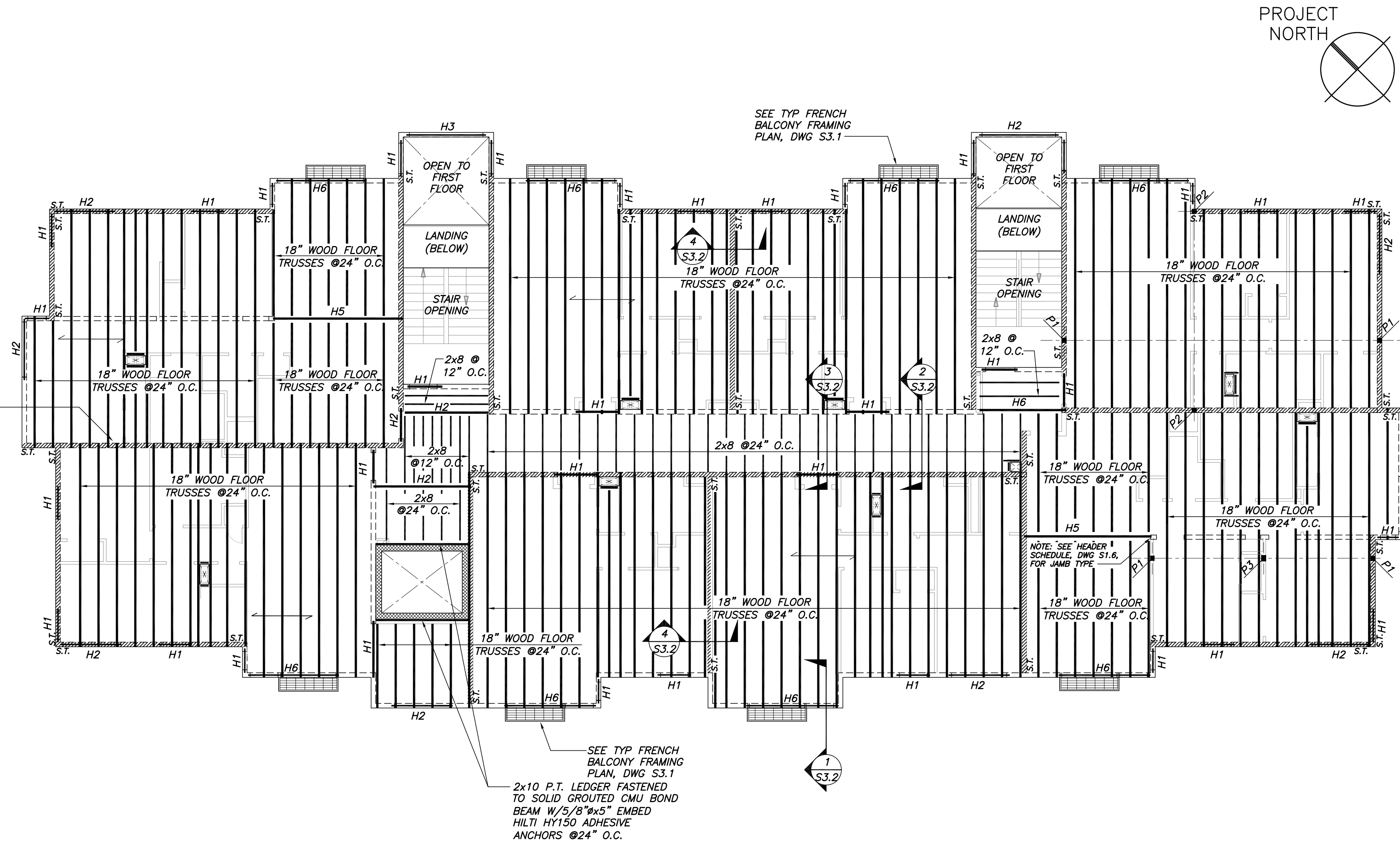


NOTE: 2x6 BEARING WALL (TYP) WHERE SHOWN. LINE UP WALL STUDS AT FLOOR TRUSS BEARING. SEE BUILDING 2 TYP BEARING WALL STUDS SCHEMATIC, DWG S1.6.



BUILDING 2
THIRD & FOURTH FLOOR FRAMING PLAN
 1/8" = 1'-0"

NOTES:

- TOP OF STRUCT SUBFLOOR AT THIRD FLR EL 39'-8 1/2"
 TOP OF STRUCT SUBFLOOR AT FOURTH FLR EL 50'-2 1/2"
- ↔ INDICATES DIRECTION OF 3/4" THICK ADVANTECH FLOOR SHEATHING. STAGGER JOINTS OF SHEATHING. FASTEN SHEATHING TO TRUSSES W/Bd NAILS @6" O.C.
- FLOOR TRUSSES TO BE DESIGNED USING FLOOR LOADS AS SPECIFIED ON DWG S1.0, GENERAL NOTES.
- G.C. RESPONSIBLE FOR COORD FRAMING LOCATIONS TO SUIT PLACEMENT OF ALL UTILITIES THROUGH DUCT CHASES & WITHIN TRUSS SPACES. TRUSS/STUD SPACING SHALL BE MODIFIED AS NECESSARY, WHILE MAINTAINING MAX SPACING REQUIREMENTS SPECIFIED.

SHEARWALL NOTES:

- ////// INDICATES PLYWOOD SHEARWALLS.
- ALL NAILS AT PLYWOOD SHEARWALLS REQUIRE 10d NAILS @4" O.C.
- S.T. INDICATES (2) SIMPSON STRAP TIE MSTC28 AT EA SIDE OF POST BETWEEN FLOORS.

WOOD POST SCHEDULE	
MARK	SIZE
P1	(3)2x6
P2	5 1/4x5 1/4 VL 1.7 2650
P3	5 1/4x7 VL 1.7 2650

Pearl Place
Building 1 & 2
 Portland Maine

Developer
 Avesta Pearl Street One,
 L.P.

Architect
 Winton Scott Architects

Landscape Architect
 Carroll Associates

Structural Engineer
 Becker Structural Engineers

BUILDING 2
Third & Fourth
Floor Framing
Plan
S1.7

Sept 1, 2006

Scale: 1/8" = 1'-0"