

NOTE: 2x6 BEARING WALL (TYP) WHERE SHOWN. LINE UP WALL STUDS AT FLOOR TRUSS BEARING. SEE BUILDING 1 TYP BEARING WALL STUDS SCHEMATIC, THIS DWG.

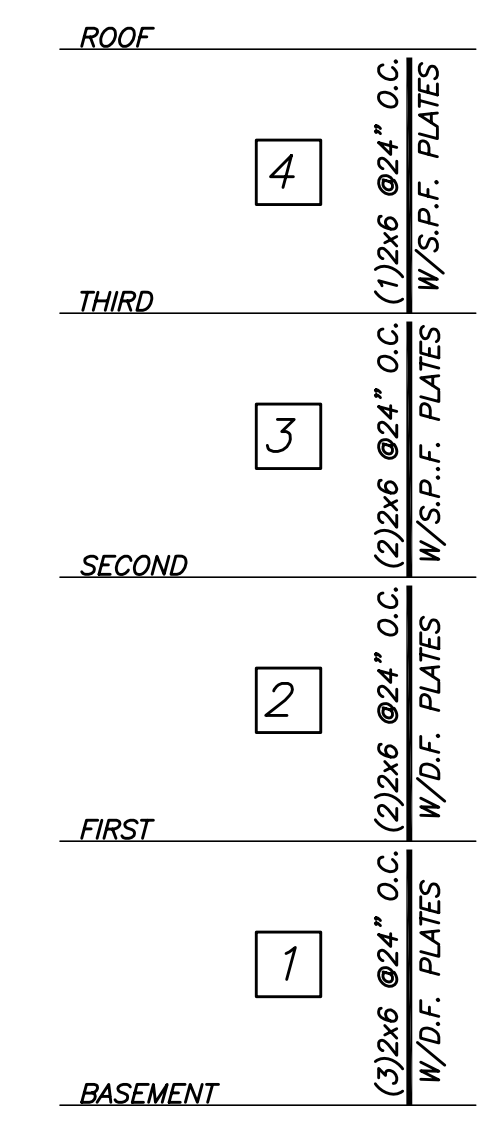
SEE TYP FRENCH BALCONY FRAMING PLAN, DWG S3.1
2x10 P.T. LEDGER FASTENED TO SOLID GROUTED CMU BOND BEAM W/5/8"x5" EMBED HILTI HY150 ADHESIVE ANCHORS @24" O.C.

BUILDING 1 HEADER SCHEDULE			
MARK	SIZE	JAMB	LOCATION
H1	(3) 2x6	(3) 2x6, (1) KING & (2) JACK	[1] & [2]
		(2) 2x6, (1) KING & (1) JACK	[3] & [4]
H2	(3) 2x10	(4) 2x6, (1) KING & (3) JACK	[1]
		(3) 2x6, (1) KING & (2) JACK	[2] & [3]
H3	(3) 2x6	(2) 2x6, (1) KING & (1) JACK	[4]
		(3) 2x6, (1) KING & (2) JACK	ALL
H4	(3) 2x12	(4) 2x6, (1) KING & (3) JACK	[1]
		(3) 2x6, (1) KING & (2) JACK	[2], [3] & [4]
H5	5 1/4x14 LVL	5 1/4x5 1/4 PSL/VSL POST	[1] & [2]
		(4) 2x6, (1) KING & (3) JACK	[3] & [4]
H6	3 1/2x9 1/4 LVL	(5) 2x6, (2) KING & (3) JACK	[1] & [2]
		(4) 2x6, (2) KING & (2) JACK	[3] & [4]

**BUILDING 1
SECOND & THIRD FLOOR FRAMING PLAN**
1/8"=1'-0"

- NOTES:
- TOP OF STRUCT SUBFLOOR AT SECOND FLR EL 39'-10 1/2"
TOP OF STRUCT SUBFLOOR AT THIRD FLR EL 50'-4 1/2"
 - INDICATES DIRECTION OF 3/4" THICK ADVANTECH FLOOR SHEATHING. STAGGER JOINTS OF SHEATHING. FASTEN SHEATHING TO TRUSSES W/8d NAILS @6" O.C.
 - FLOOR TRUSSES TO BE DESIGNED USING FLOOR LOADS AS SPECIFIED ON DWG S1.0, GENERAL NOTES.
 - G.C. RESPONSIBLE FOR COORD FRAMING LOCATIONS TO SUIT PLACEMENT OF ALL UTILITIES THROUGH DUCT CHASES & WITHIN TRUSS SPACES. TRUSS/STUD SPACING SHALL BE MODIFIED AS NECESSARY, WHILE MAINTAINING MAX SPACING REQUIREMENTS SPECIFIED.

- SHEARWALL NOTES:
- INDICATES PLYWOOD SHEARWALLS.
 - ALL NAILS AT PLYWOOD SHEARWALLS REQUIRE 10d NAILS @4" O.C.
 - S.T. INDICATES (2) SIMPSON STRAP TIE MSTC28 AT EA SIDE OF POST BETWEEN FLOORS.



BUILDING 1 TYP BEARING WALL STUDS SCHEMATIC U.N.O. IN PLAN

**Pearl Place
Building 1 & 2
Portland Maine**

Developer
Avesta Pearl Street One, L.P.

Architect
Winton Scott Architects

Landscape Architect
Carroll Associates

Structural Engineer
Becker Structural Engineers

BUILDING 1
Second & Third
Floor Framing
Plan
S1.3

Sept 1, 2006

Scale: 1/8" = 1'-0"