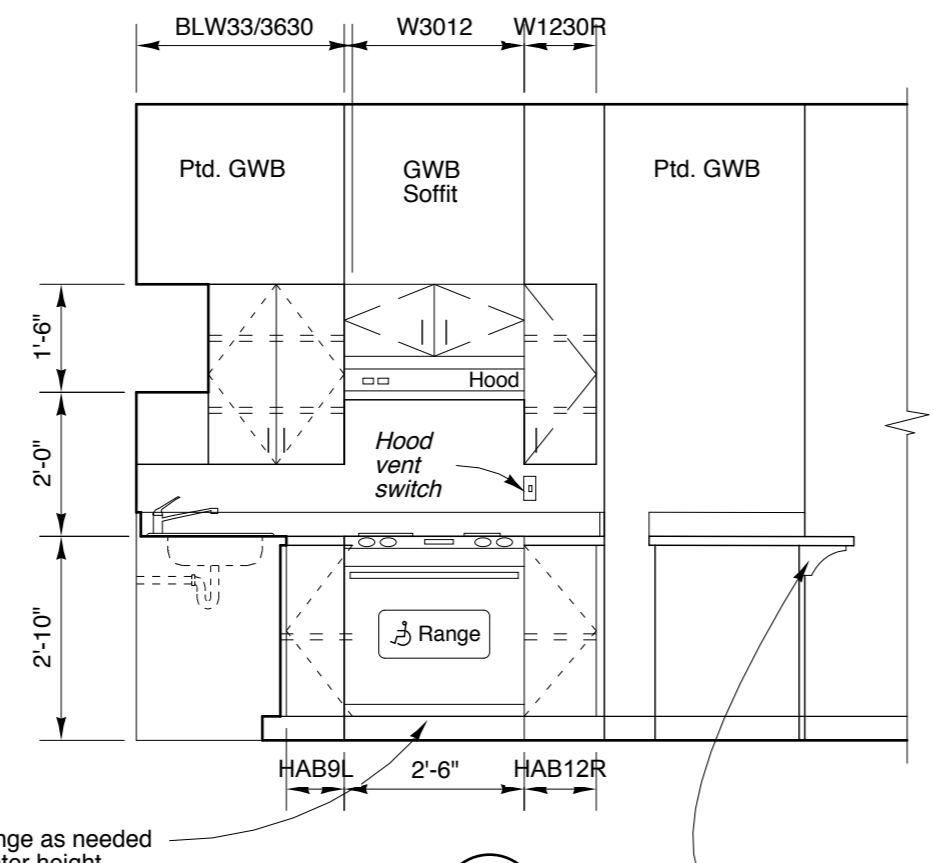


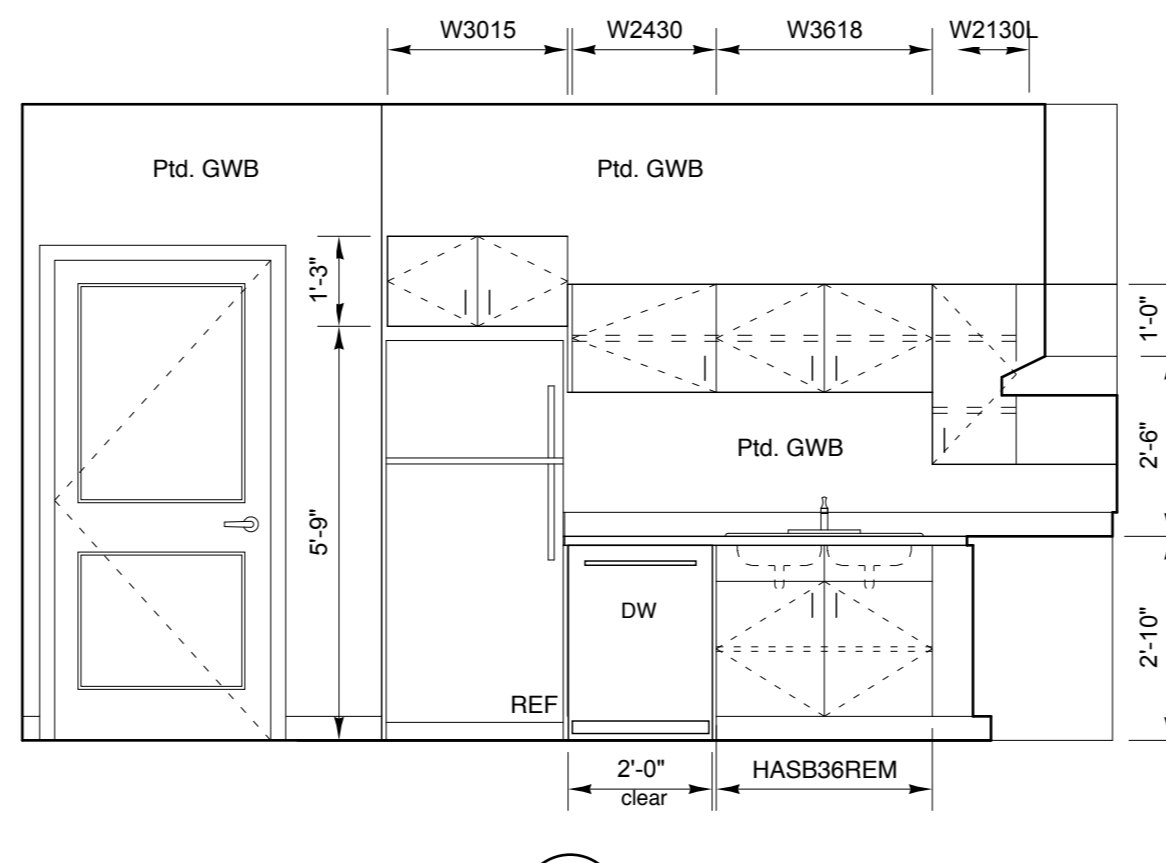
KITCHEN TYPE "G" / B1
Accessible Type "AA"

1

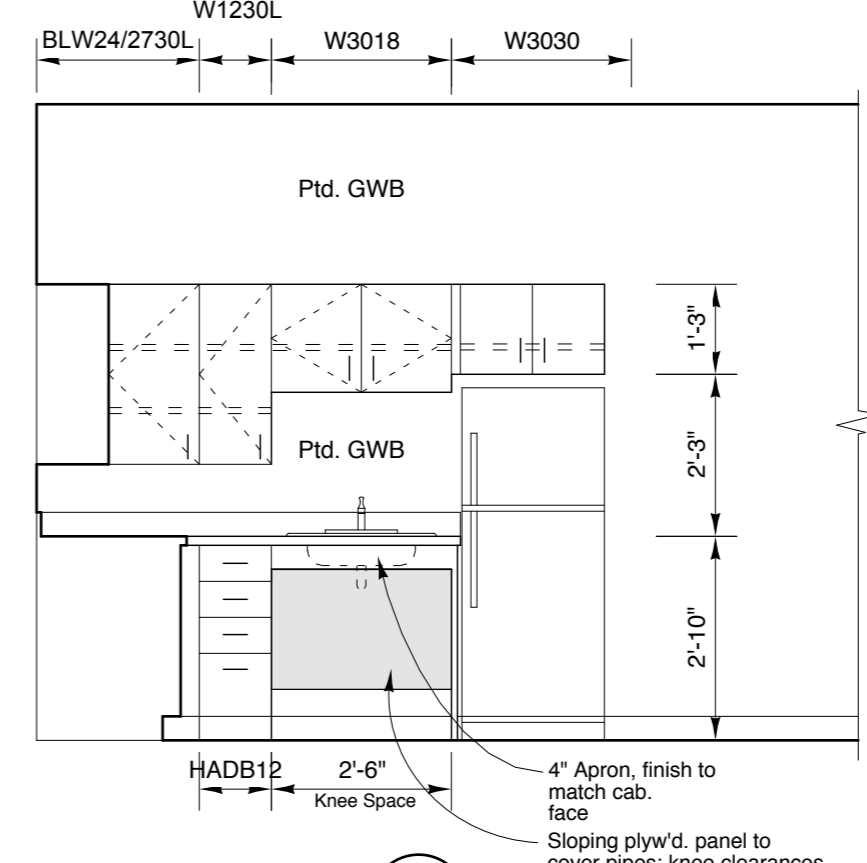


Built-up base for range as needed to comply with counter height

2

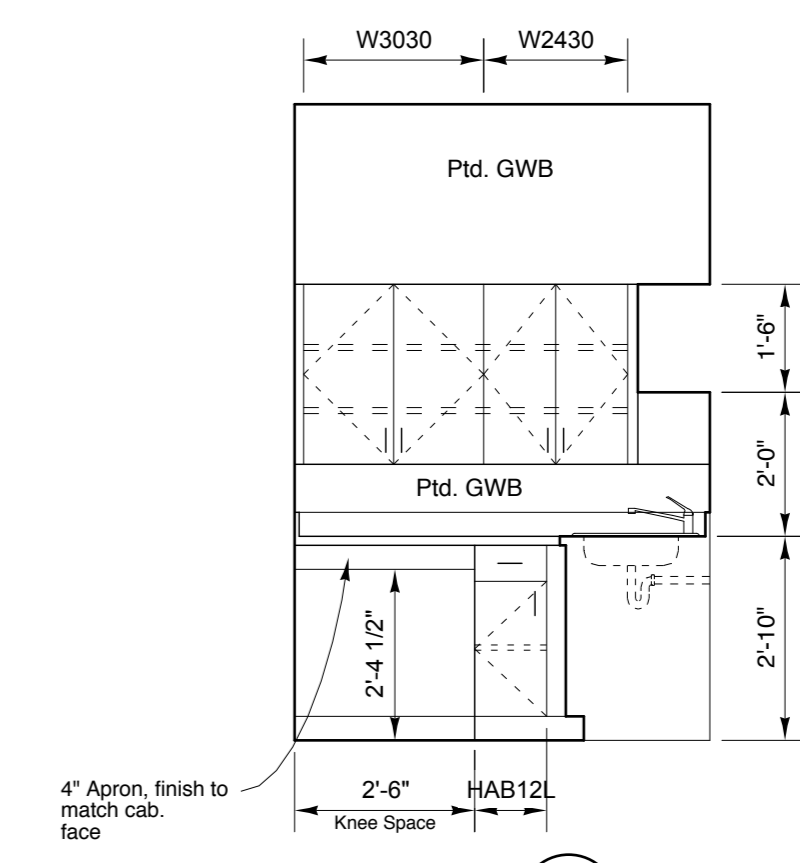


3

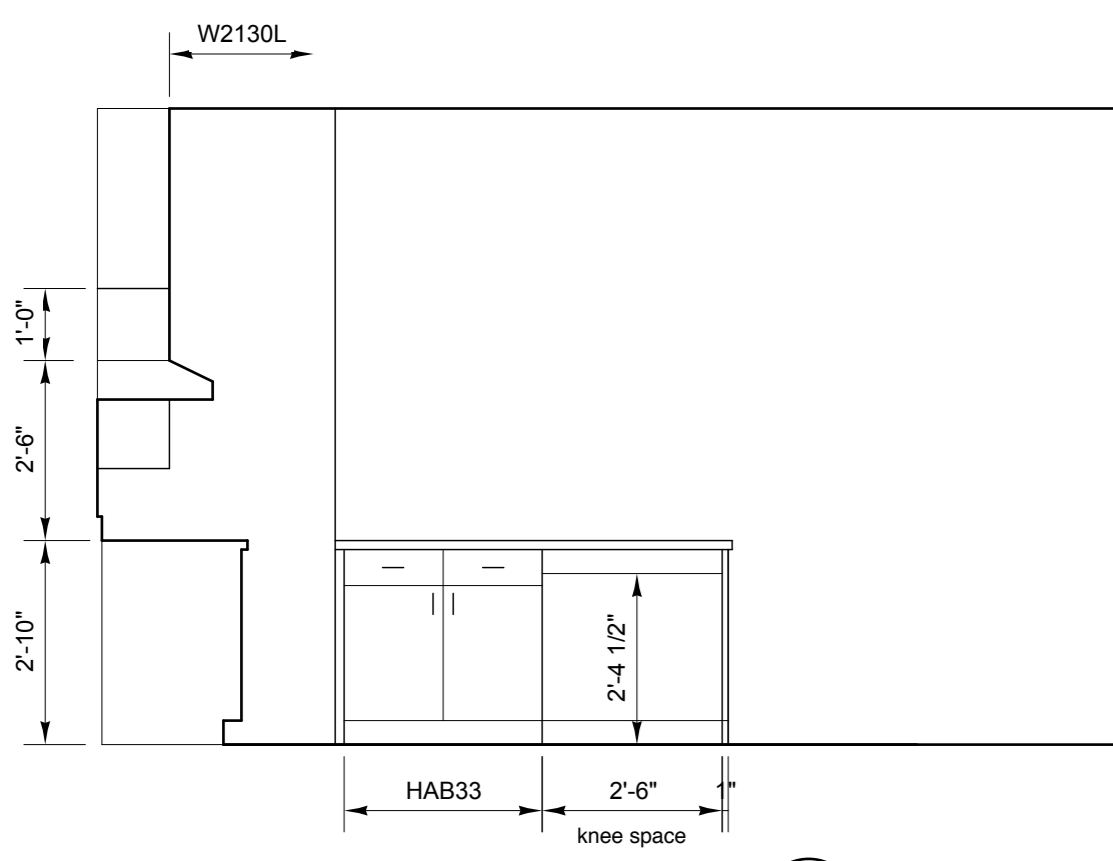


PUBLIC KITCHEN
Accessible

4

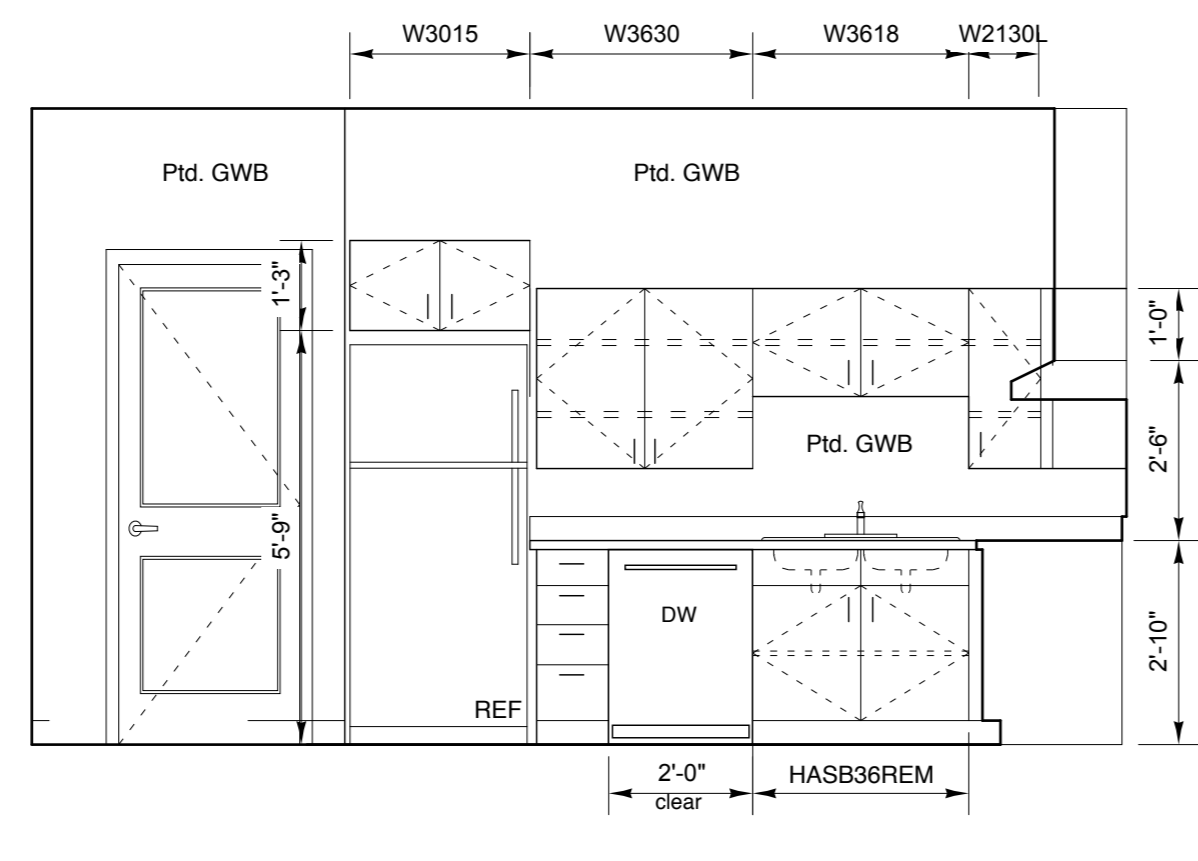


5



KITCHEN TYPE "G" / B2
Accessible Type "AA"

6



7

Pearl Place Building 1 & 2 Portland Maine

Developer
Avesta Pearl
Street One, L.P.

Architect
Winton Scott Architects

Landscape Architect
Carroll Associates

Civil
Gorrill Palmer
Consulting Engineers

Structural
Becker Structural

Mechanical / Plumbing
Mechanical Systems
Engineers

Electrical
Bartlett Designs

BUILDING 1&2
KITCHENS
Elevations

A 8.3

Scale: 3/8" = 1'-0"

September 1., 2006