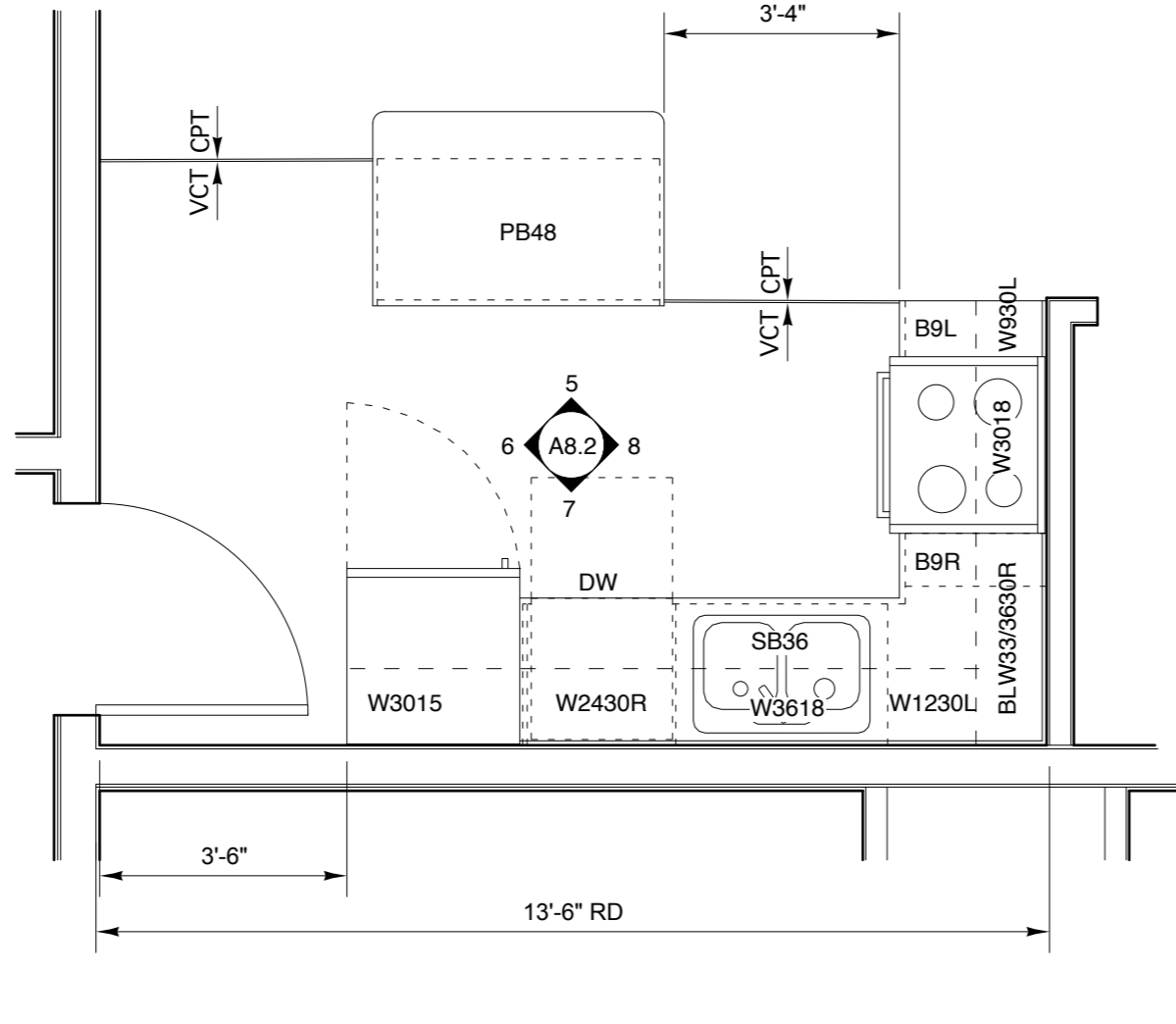


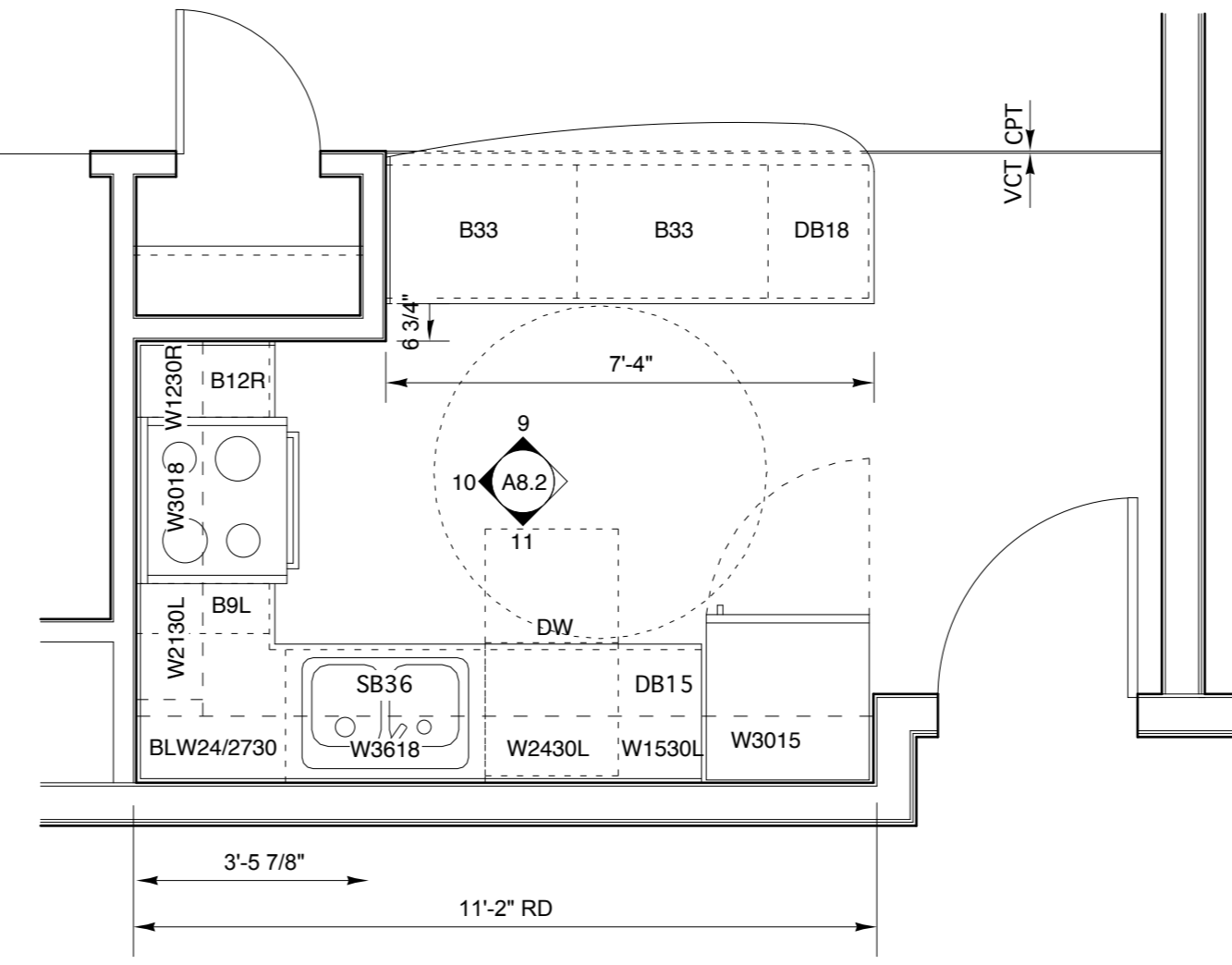
KITCHEN TYPE "A"; "B"; "K"
Adaptable

1



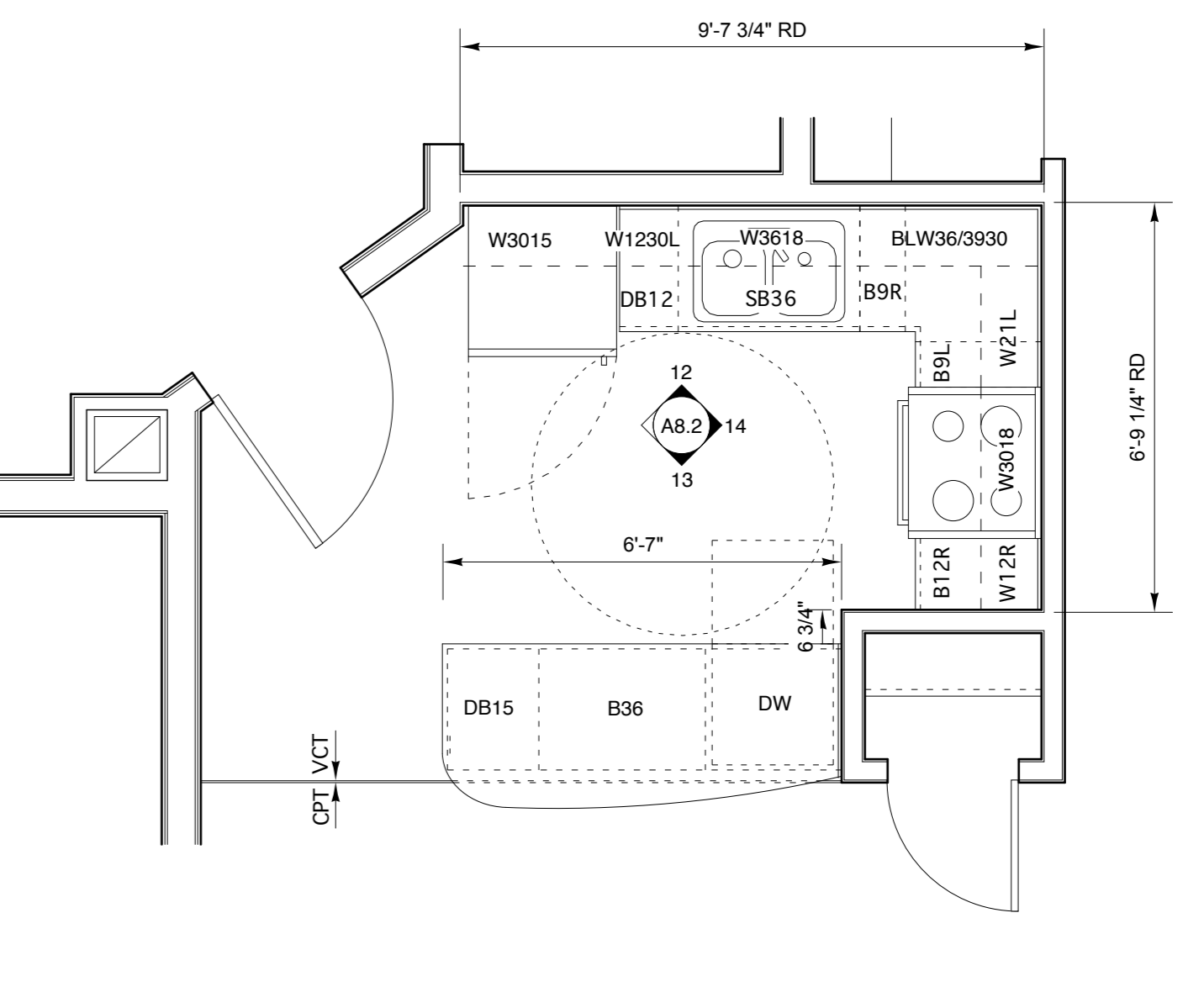
KITCHEN TYPE "J";
Adaptable

2



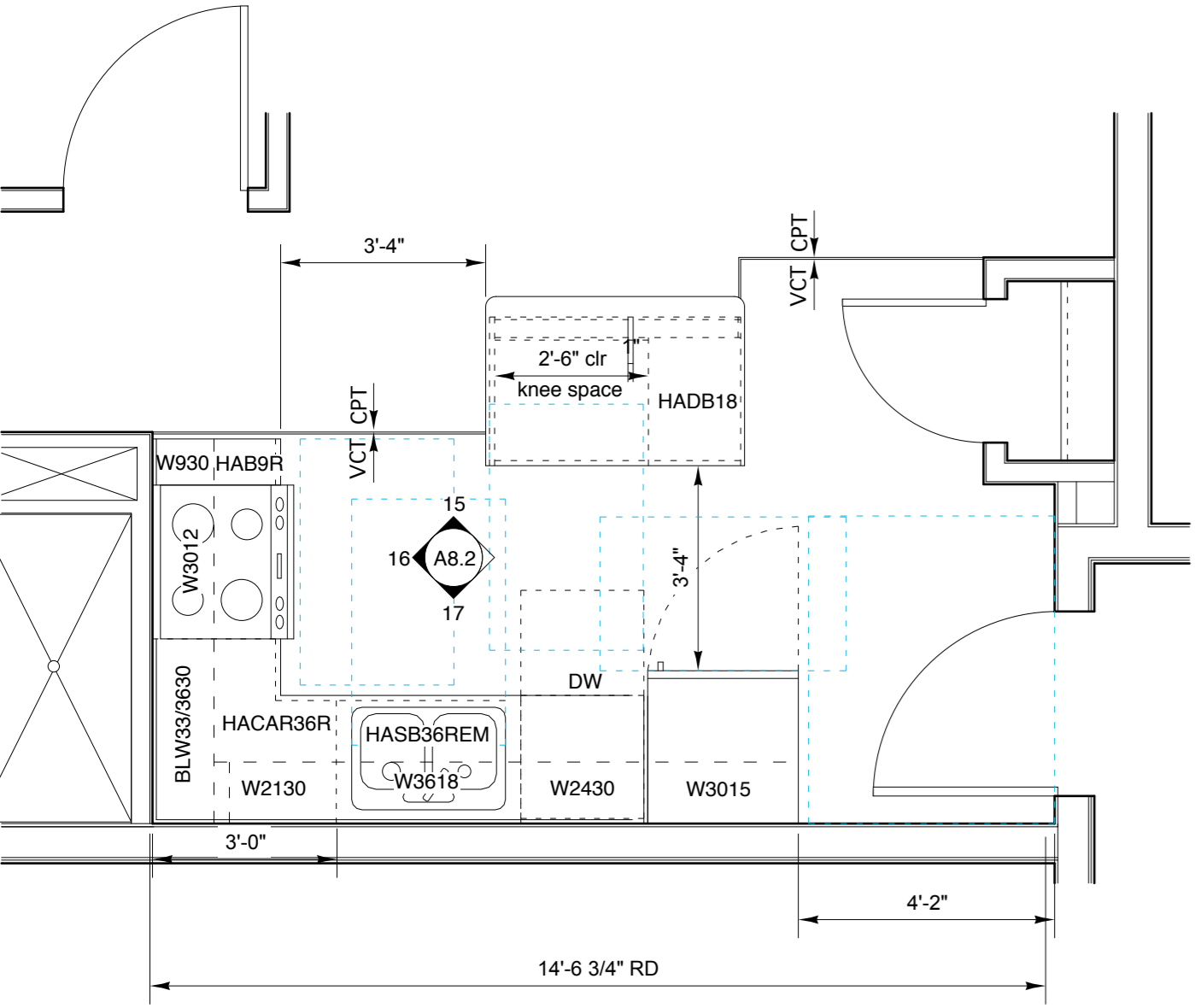
KITCHEN TYPE "C"
Adaptable

3



KITCHEN TYPE "H"
Adaptable

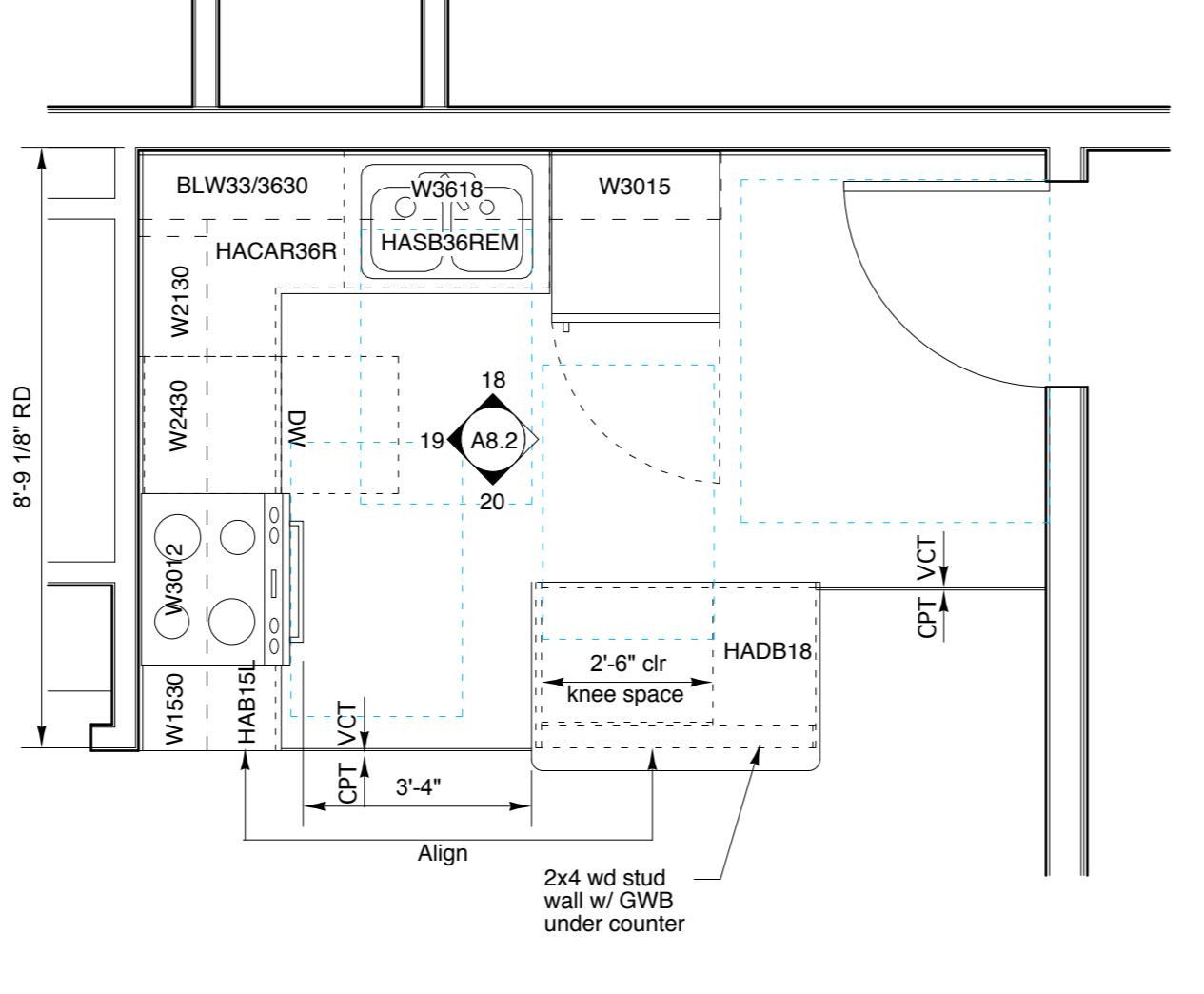
4



KITCHEN TYPE "D"
Accessible Type "A"



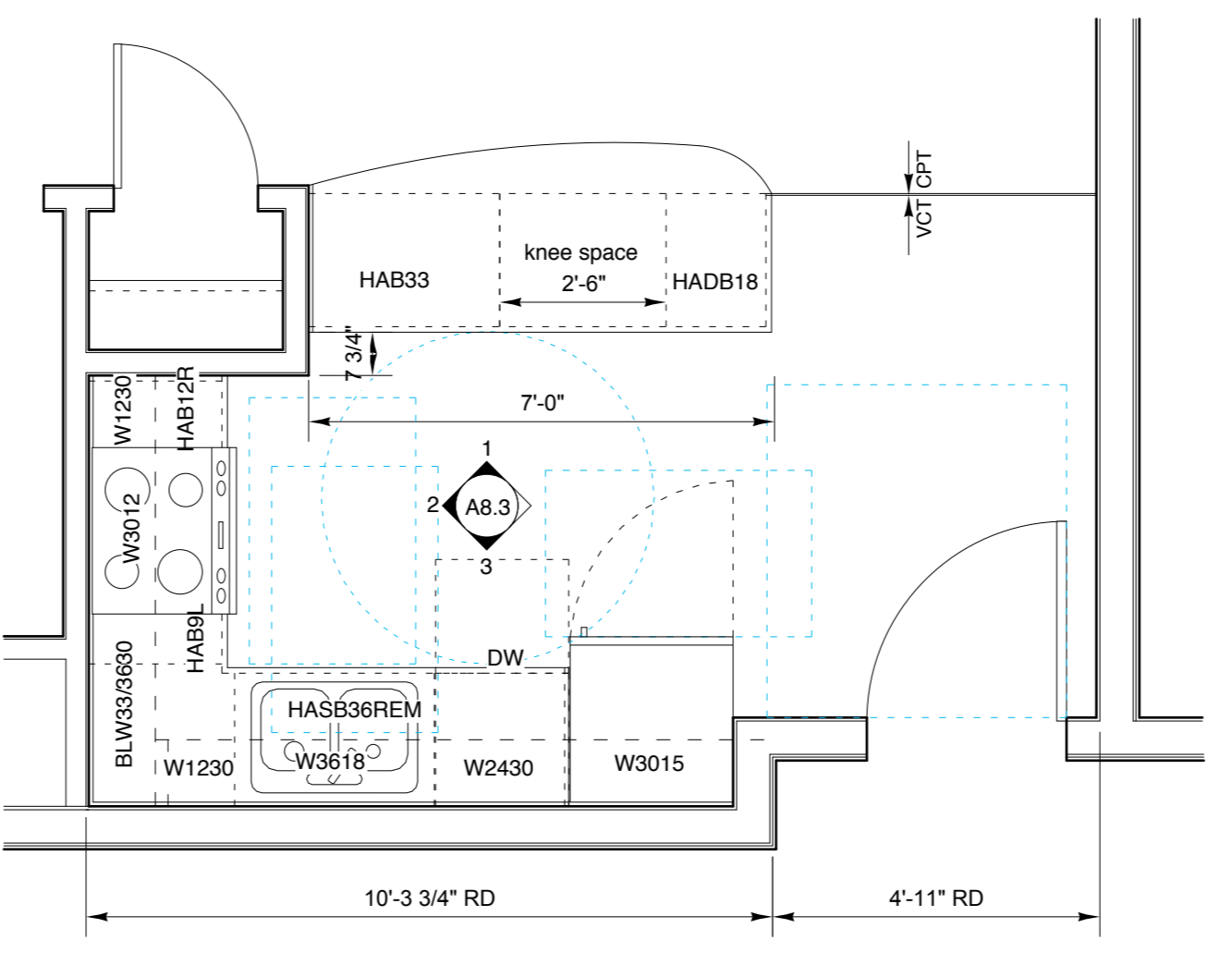
5



KITCHEN TYPE "E"; "F"
Accessible Type "A"



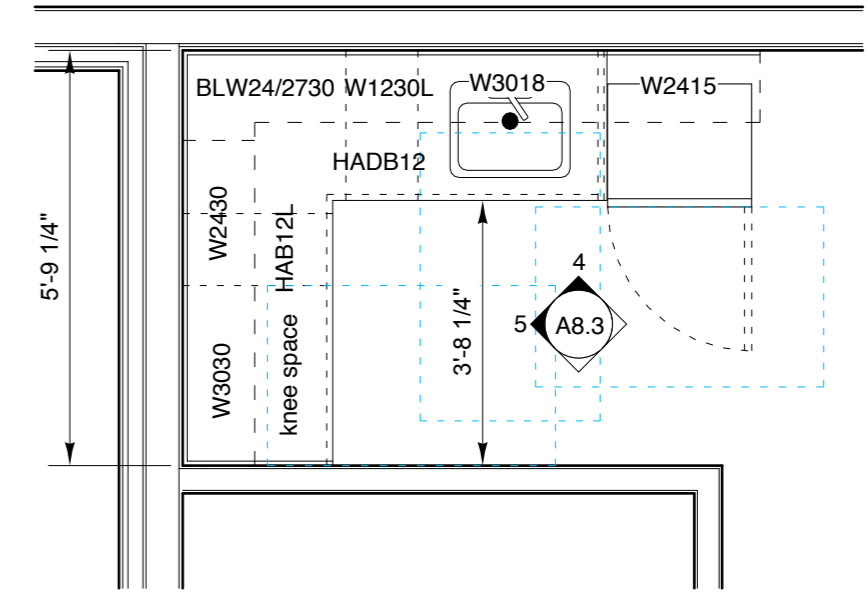
6



KITCHEN TYPE "G" / B1
Accessible Type "AA"



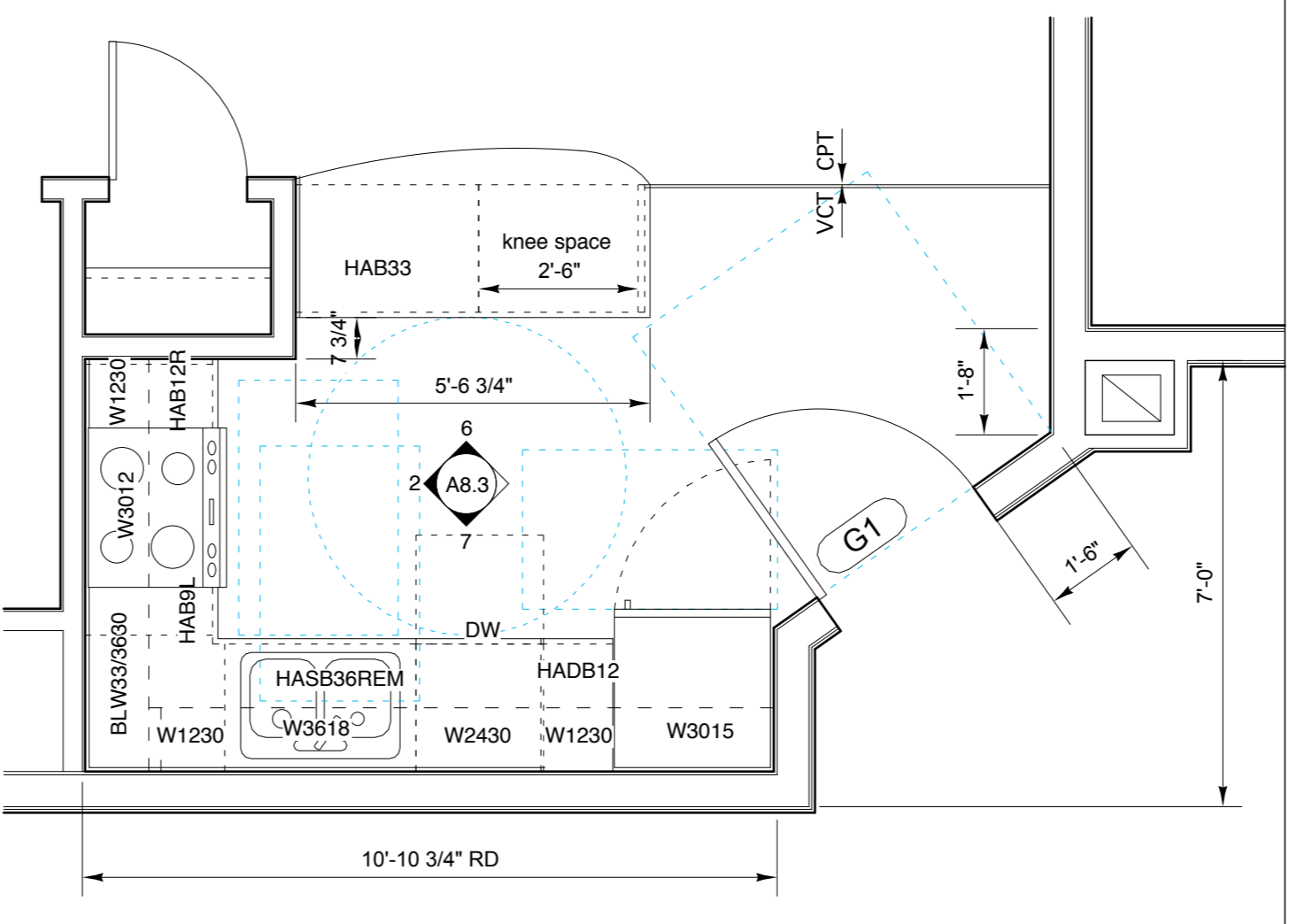
7



PUBLIC KITCHEN
Accessible



8



KITCHEN TYPE "G" / B2
Accessible Type "AA"



9

GENERAL NOTES

1. Provide solid blocking behind all casework & wall mounted accessories typical. Follow manufacturer's recommendations on dimensions and methods for blocking installation.
2. All countertops and backsplashes to be plastic laminate unless noted otherwise. See specifications.
3. Refer to specifications for cabinetry, hardware & appliance descriptions.
4. All wall base to be 4" rubber unless noted otherwise. Wrap base around end of exposed cabinets.
5. Insulate all exposed pipes in accessible units & adaptable units, where removable cabinets are called per ADA requirements.
6. Caulk and seal all floor and wall penetrations at piping.
7. Caulk all seams @ laminated countertop and backsplash and wall.
9. Dimensions are to face of finished wall or center of fixture/ accessory unless noted as 'RD'. Contact architect for any discrepancies.
10. Finish all exposed cabinet end panels to match cabinet face finish (including end panels adjacent to removable cabinetry).
11. Cabinetry installer responsible for providing all fillers, trims, etc. as required. Field verify all dimensions (including relationships with sinks) prior to cabinetry construction and installation. Contact, architect for any discrepancies.
12. Finish end panels adjacent to removable cabinets to match face panels and wrap wall base around these end panels. Finish flooring, install wall base and paint back wall at all removable cabinets.

Pearl Place Building 1 & 2 Portland Maine

Developer
Avesta Pearl
Street One, L.P.

Architect
Winton Scott Architects

Landscape Architect
Carroll Associates
Civil
Gorrill Palmer
Consulting Engineers
Structural
Becker Structural
Mechanical / Plumbing
Mechanical Systems
Engineers
Electrical
Bartlett Designs

BUILDING 1&2 KITCHENS Plans A 8.1

Scale: 3/8" = 1'-0"

September 1., 2006