

Pearl Place Building 1 & 2 Portland Maine

Developer

Avesta Pearl
Street One, L.P.

Architect
Winton Scott Architects

Landscape Architect
Carroll Associates

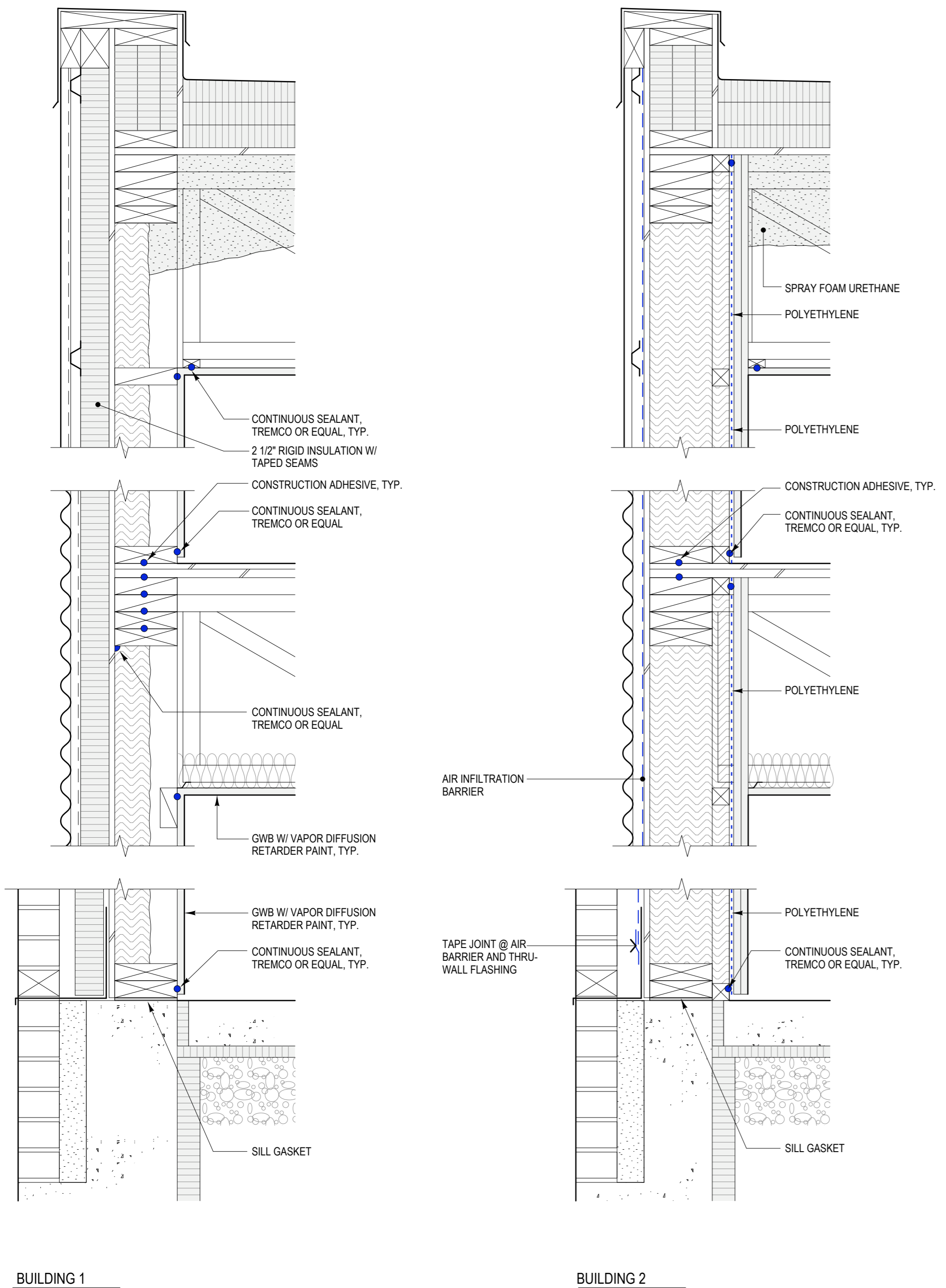
DETAILS

A5.8

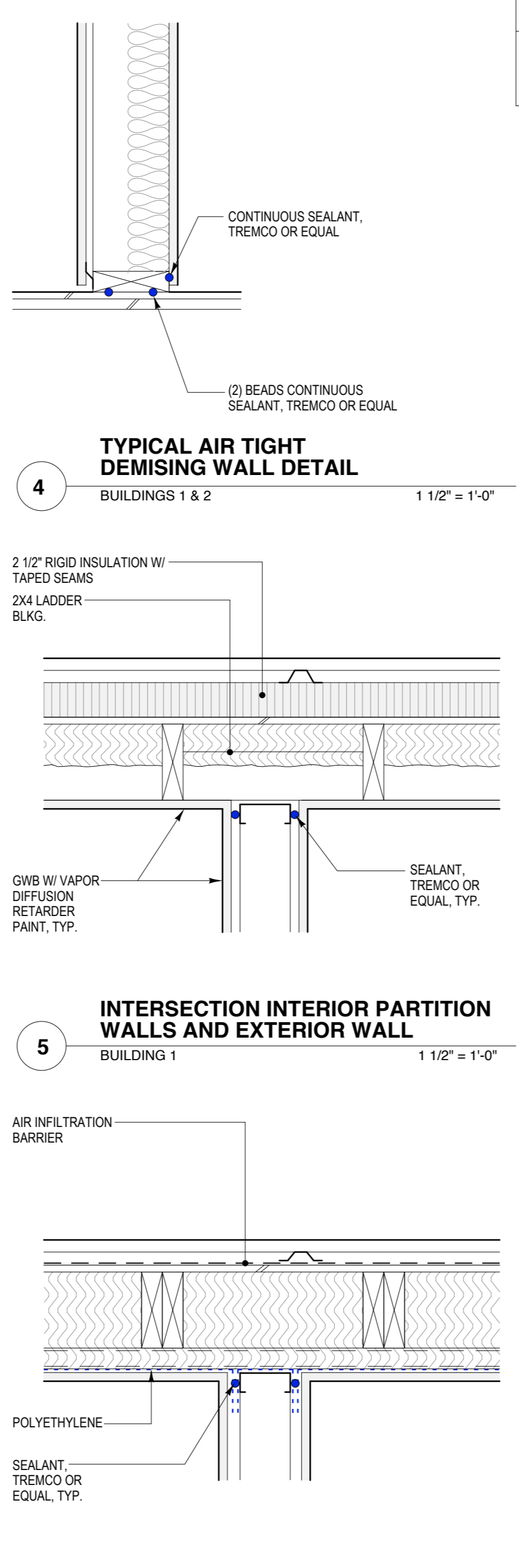
Scale: AS SHOWN

SEPTEMBER 1, 2006

GENERAL NOTE
1. All electrical boxes located on exterior walls or unit demising walls to be airtight boxes.

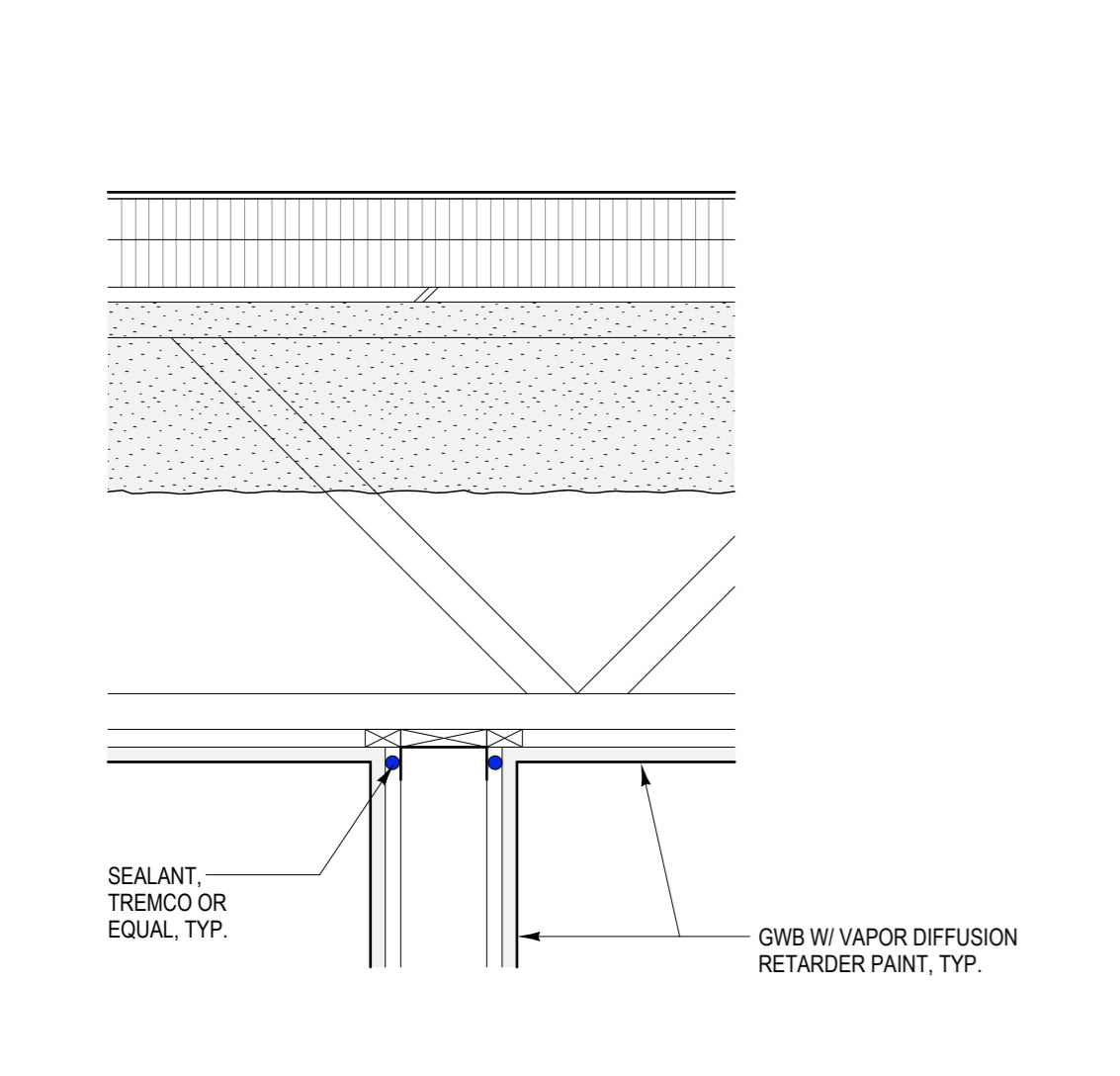


1 TYPICAL AIR-TIGHT CONSTRUCTION DETAILS
BUILDING 1 & 2
1 1/2" = 1'-0"

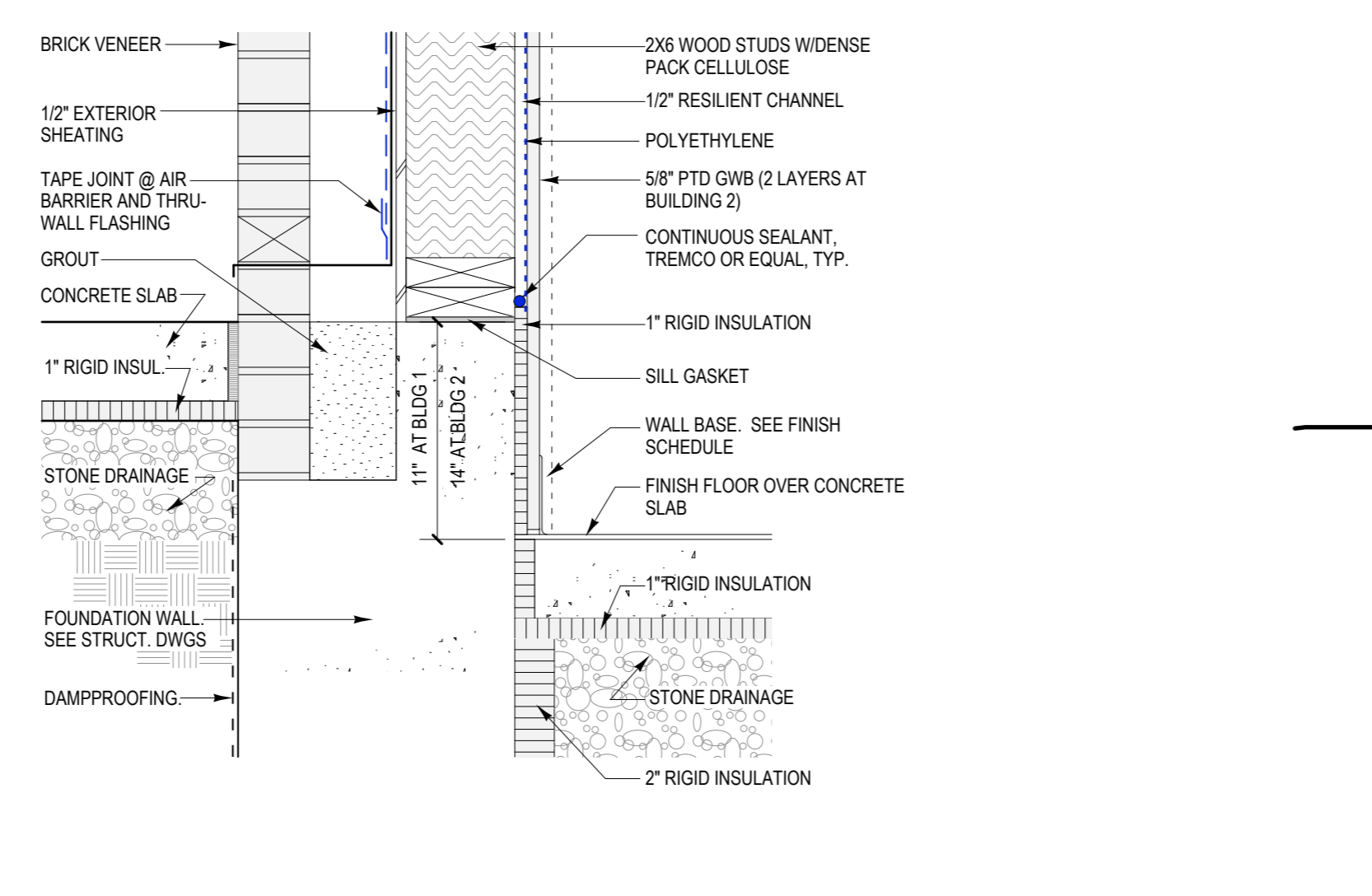


4 TYPICAL AIR TIGHT DEMISING WALL DETAIL
BUILDINGS 1 & 2
1 1/2" = 1'-0"

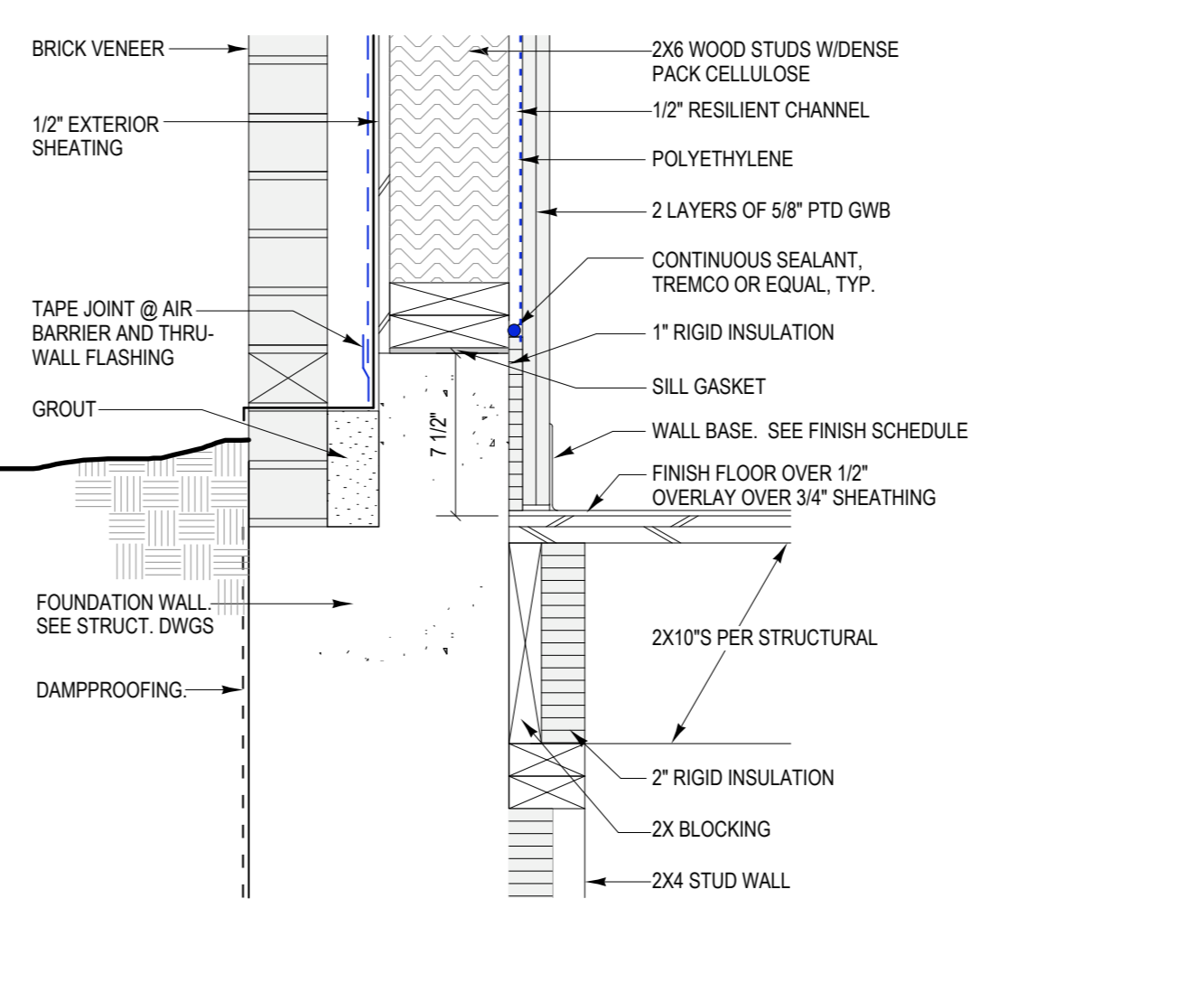
5 INTERSECTION INTERIOR PARTITION WALLS AND EXTERIOR WALL
BUILDING 1
1 1/2" = 1'-0"



2 INTERSECTION INTERIOR PARTITION WALLS AND INSULATED CEILING
BUILDING 1 & 2
1 1/2" = 1'-0"



7 EXTERIOR WALL DETAIL AT STAIR TOWER 1-1, 1-2 AND 2-2.
BUILDING 1 & 2
1 1/2" = 1'-0"



8 EXTERIOR WALL DETAIL AT STAIR TOWER 2-1
BUILDING 2
1 1/2" = 1'-0"