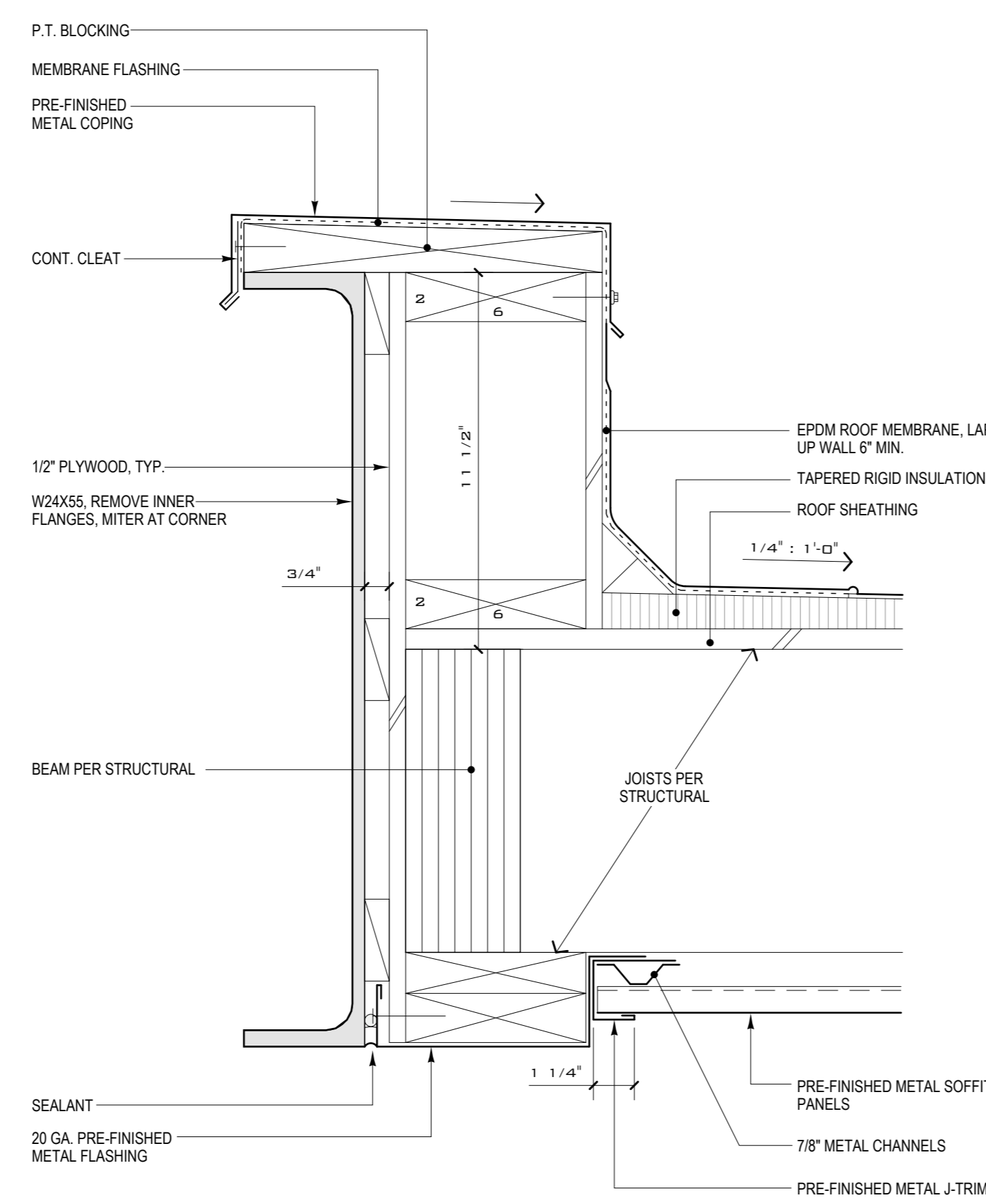


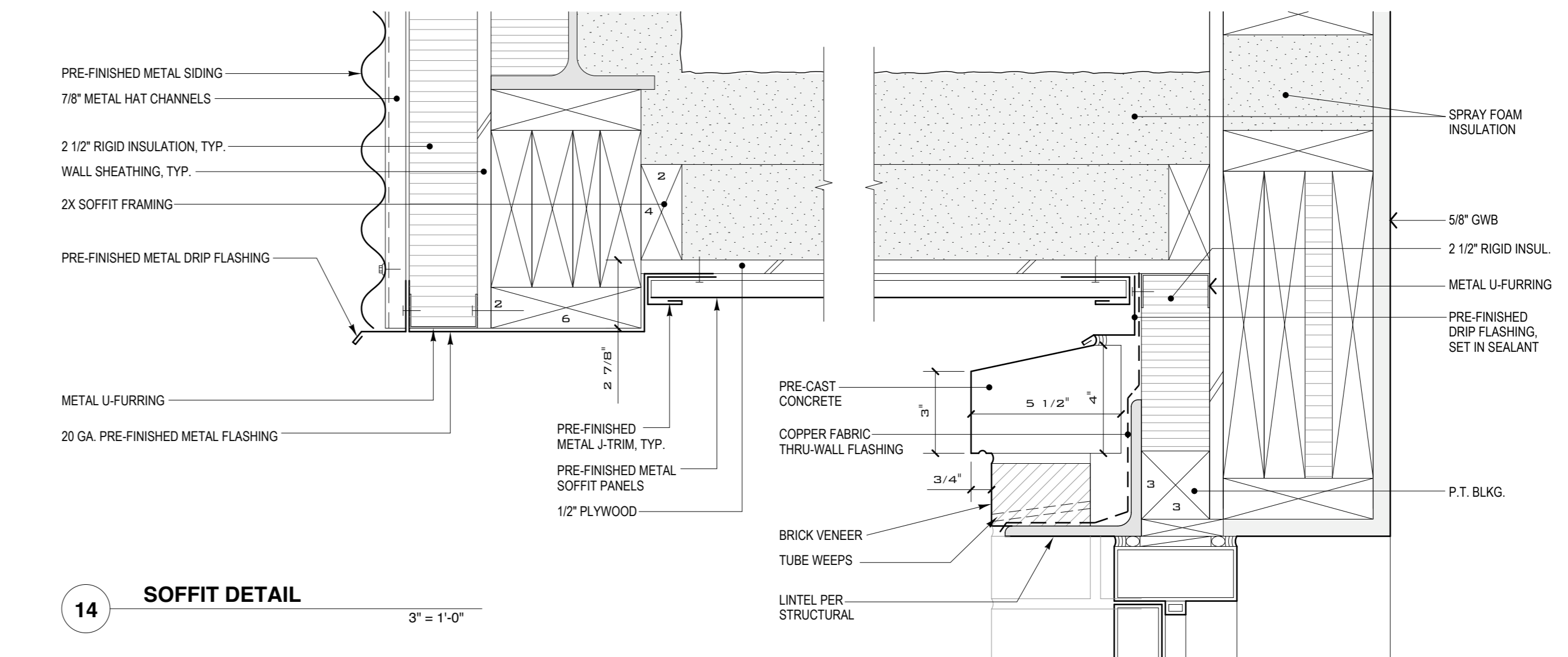
11 ENTRY ROOF 3" = 1'-0"



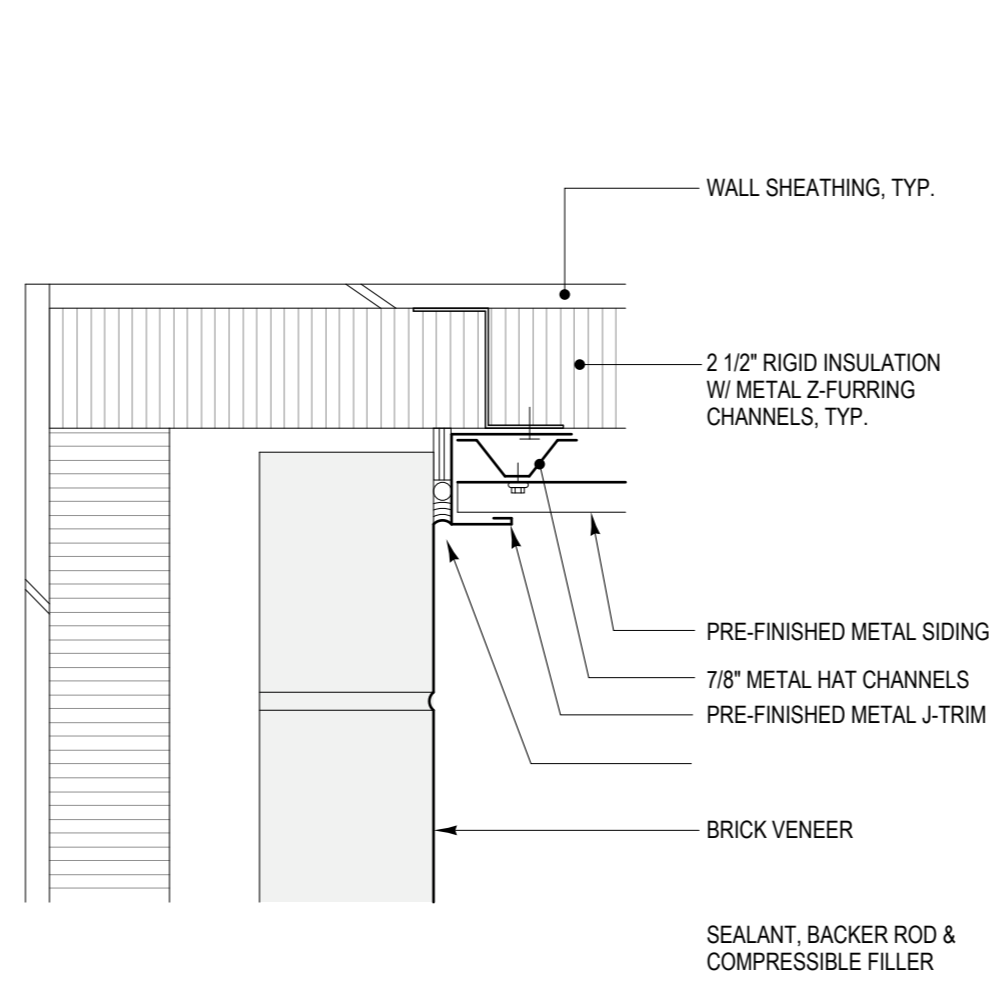
12 ENTRY ROOF 3" = 1'-0"

GENERAL NOTES

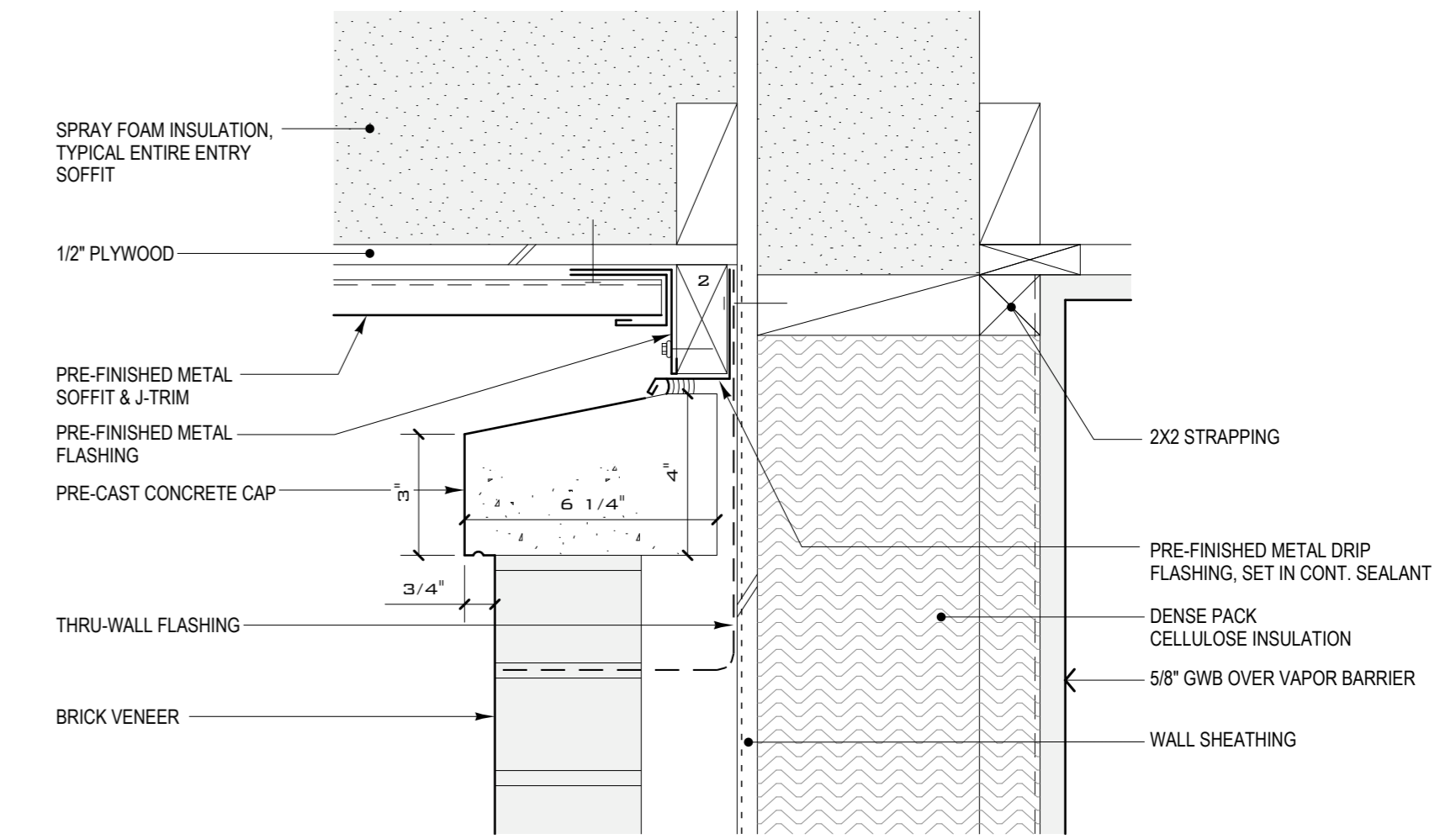
1. Paint all exposed steel. Color to be chosen by Architect.
2. Contractor responsible for providing, coordinating installation, and coordinating orientation of all metal Z-furring, U-furring and custom fabricated metal shapes as required for installation of rigid insulation and metal siding system at exterior walls of Building 1 based on the type of siding used and all other factors. All exterior metal siding and associated flashing to be securely anchored to metal furring channels or P.T. blocking typical.



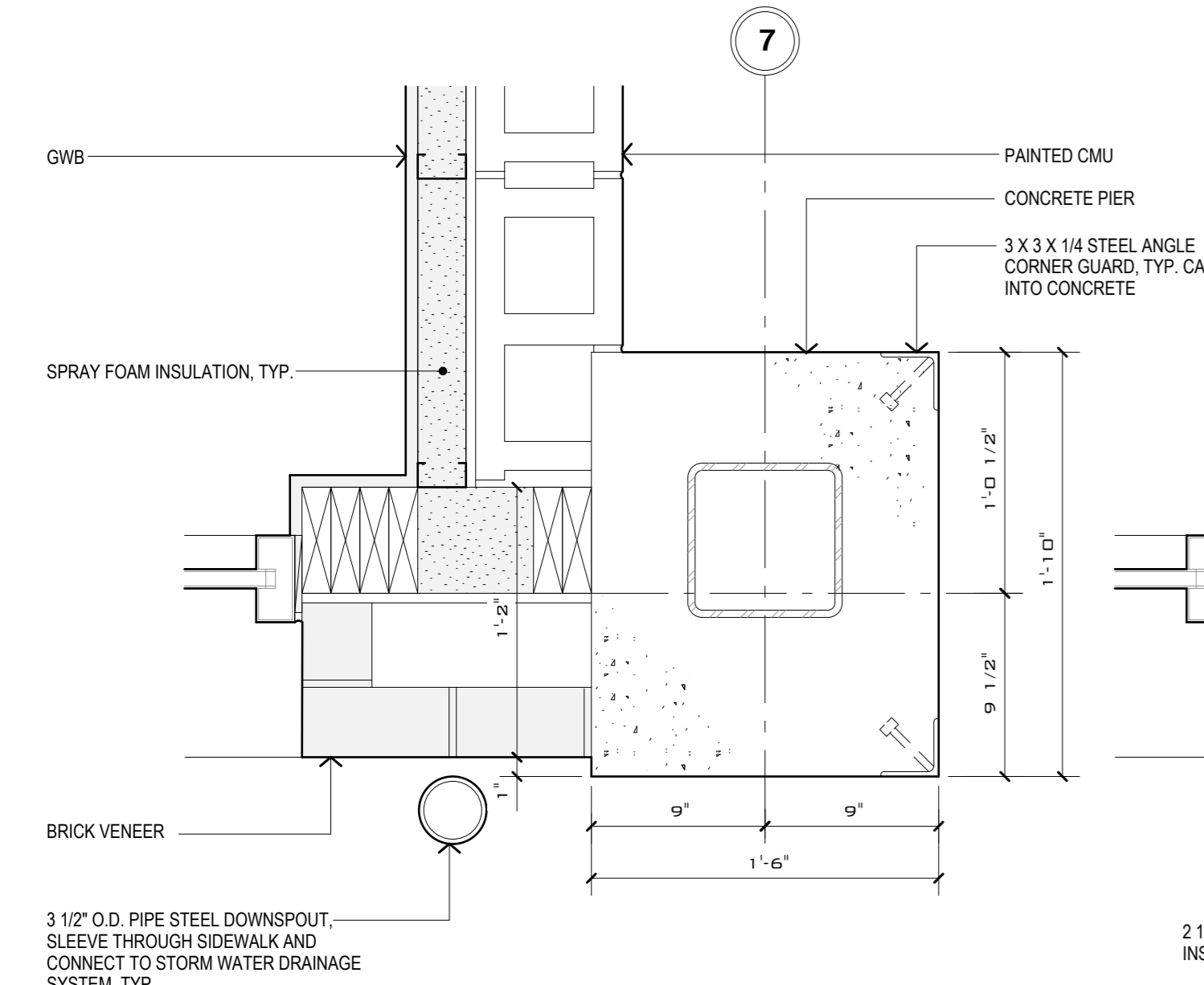
14 SOFFIT DETAIL 3" = 1'-0"



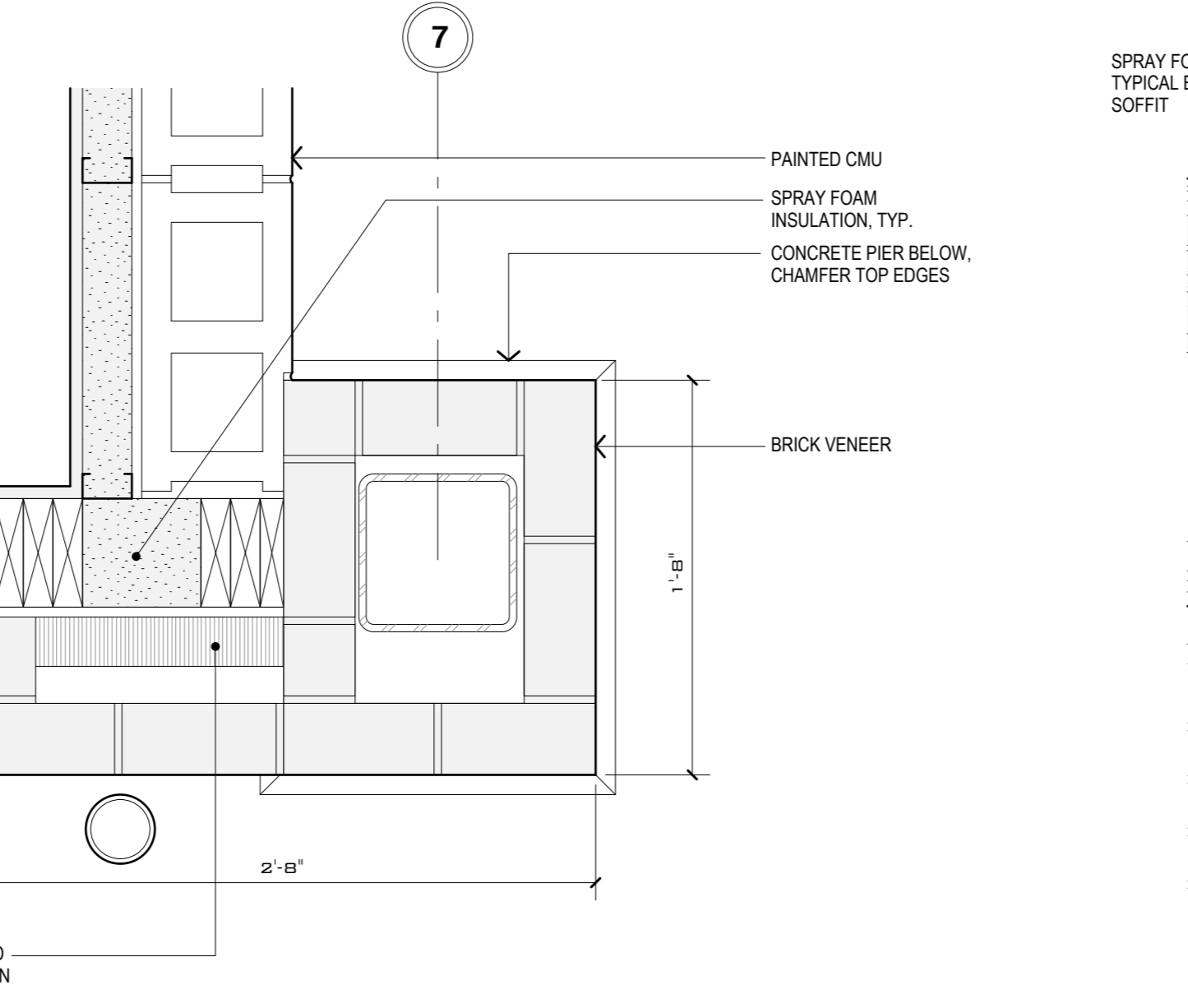
15 TYPICAL BRICK TO SIDING DETAIL 3" = 1'-0"



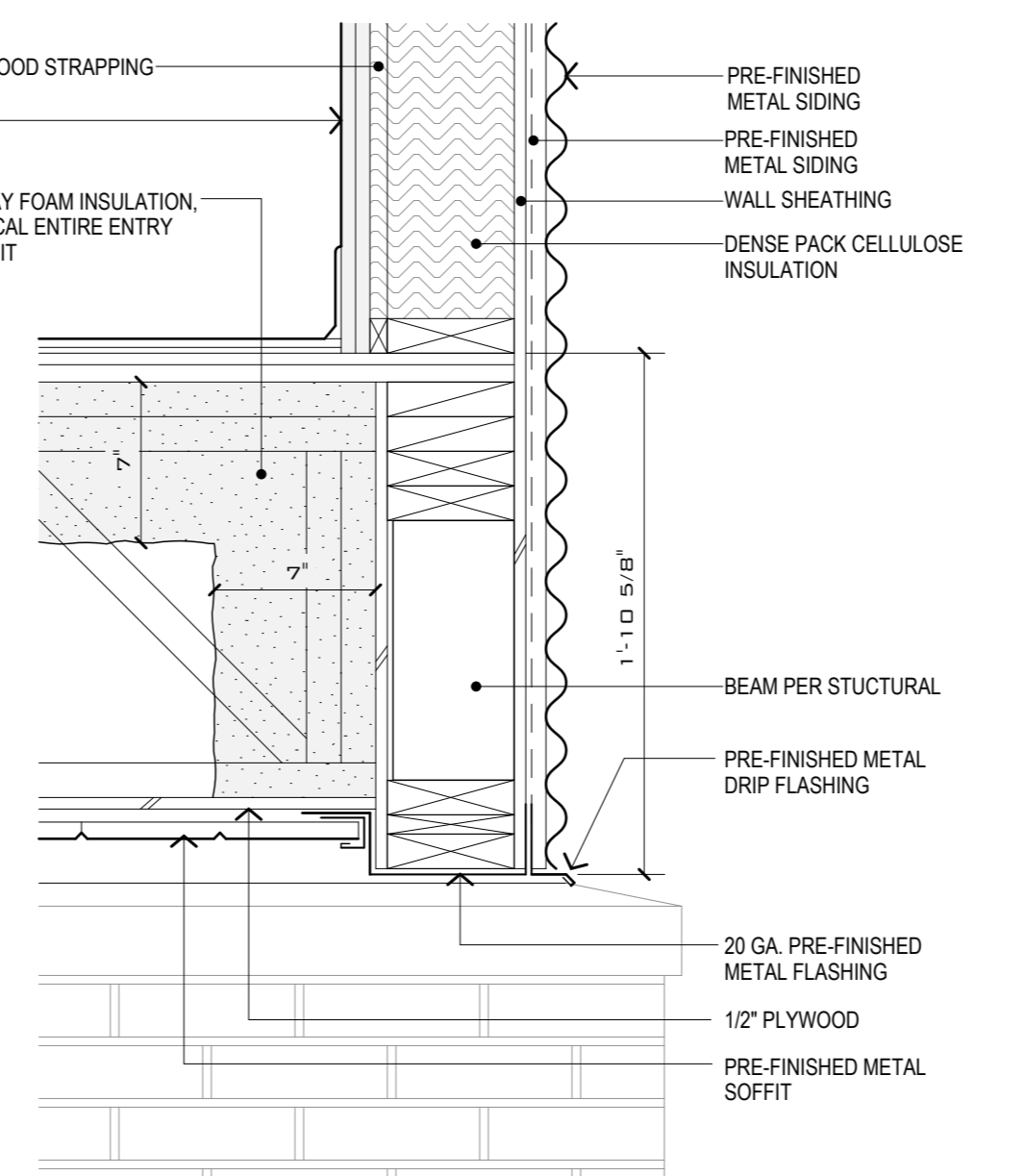
16 SOFFIT DETAIL 3" = 1'-0"



17 PLAN DETAIL 1 1/2" = 1'-0"



18 PLAN DETAIL 1 1/2" = 1'-0"



19 SECTION AT ENTRY SOFFIT 1 1/2" = 1'-0"

Pearl Place Building 1 & 2 Portland Maine

Developer
Avesta Pearl
Street One, L.P.

Architect
Winton Scott Architects

Landscape Architect
Carroll Associates

EXTERIOR DETAILS

A5.6

Scale: AS SHOWN