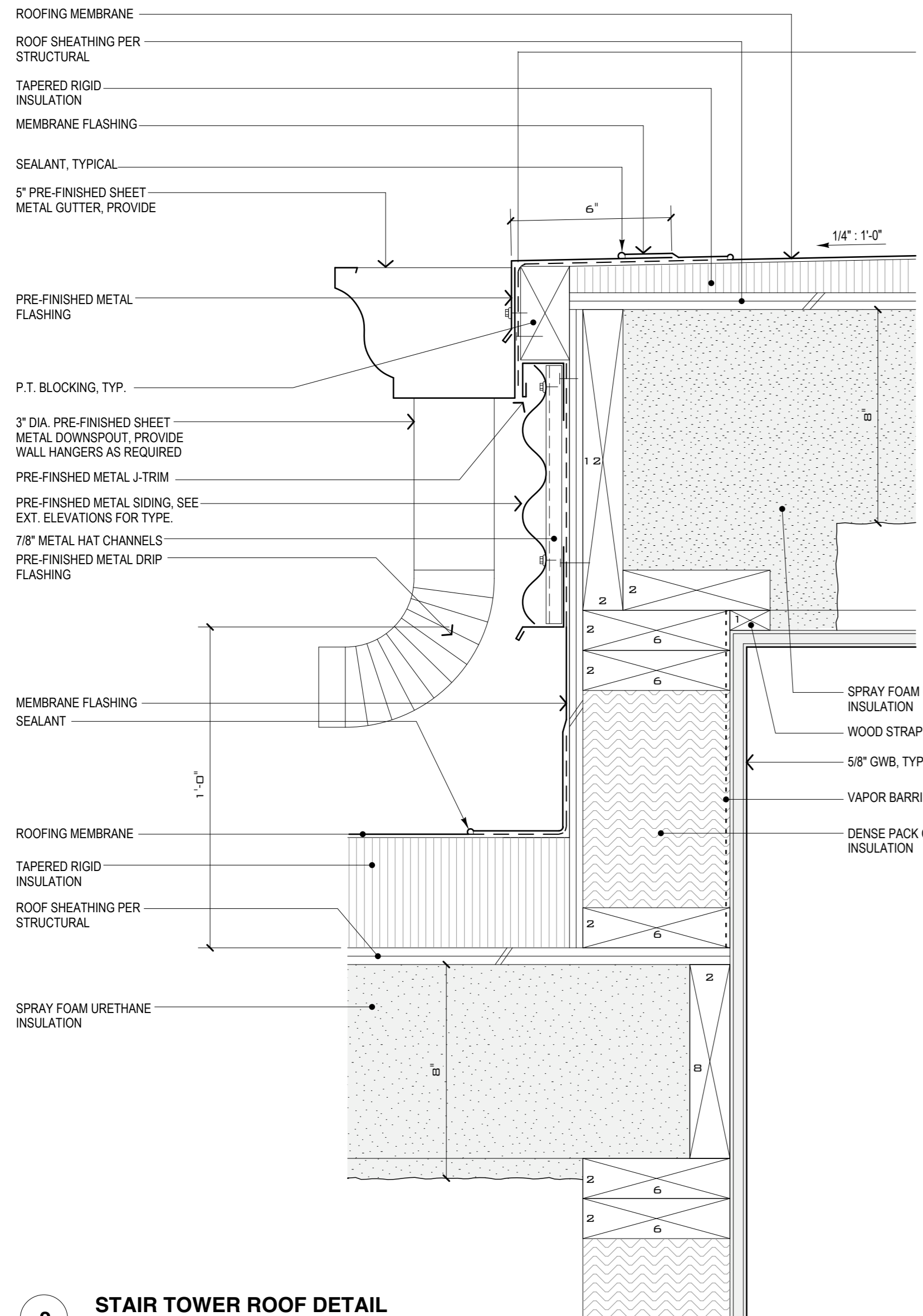


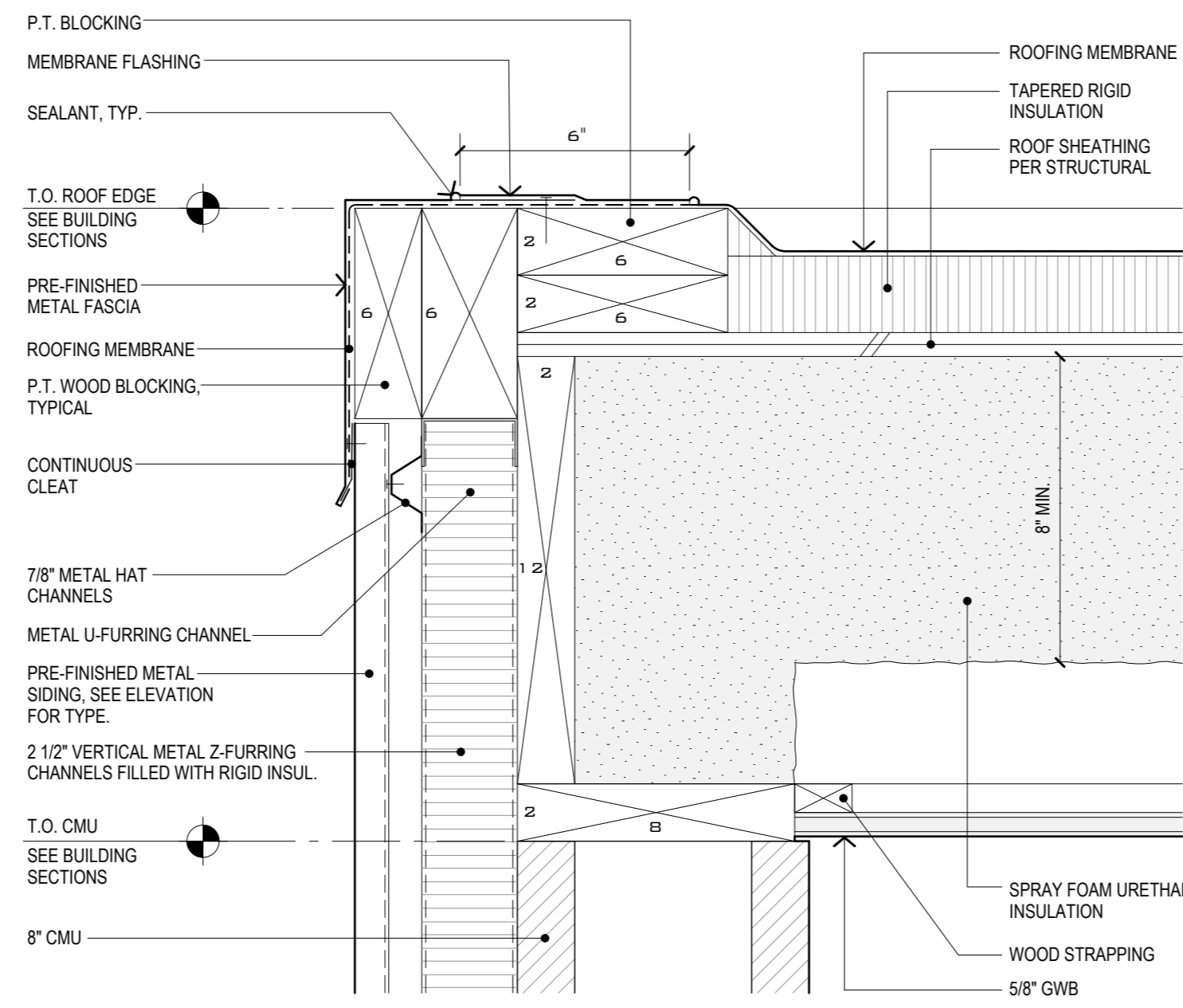
**1 PARAPET DETAIL - BUILDING 1**  
3" = 1'-0"

**GENERAL NOTES**

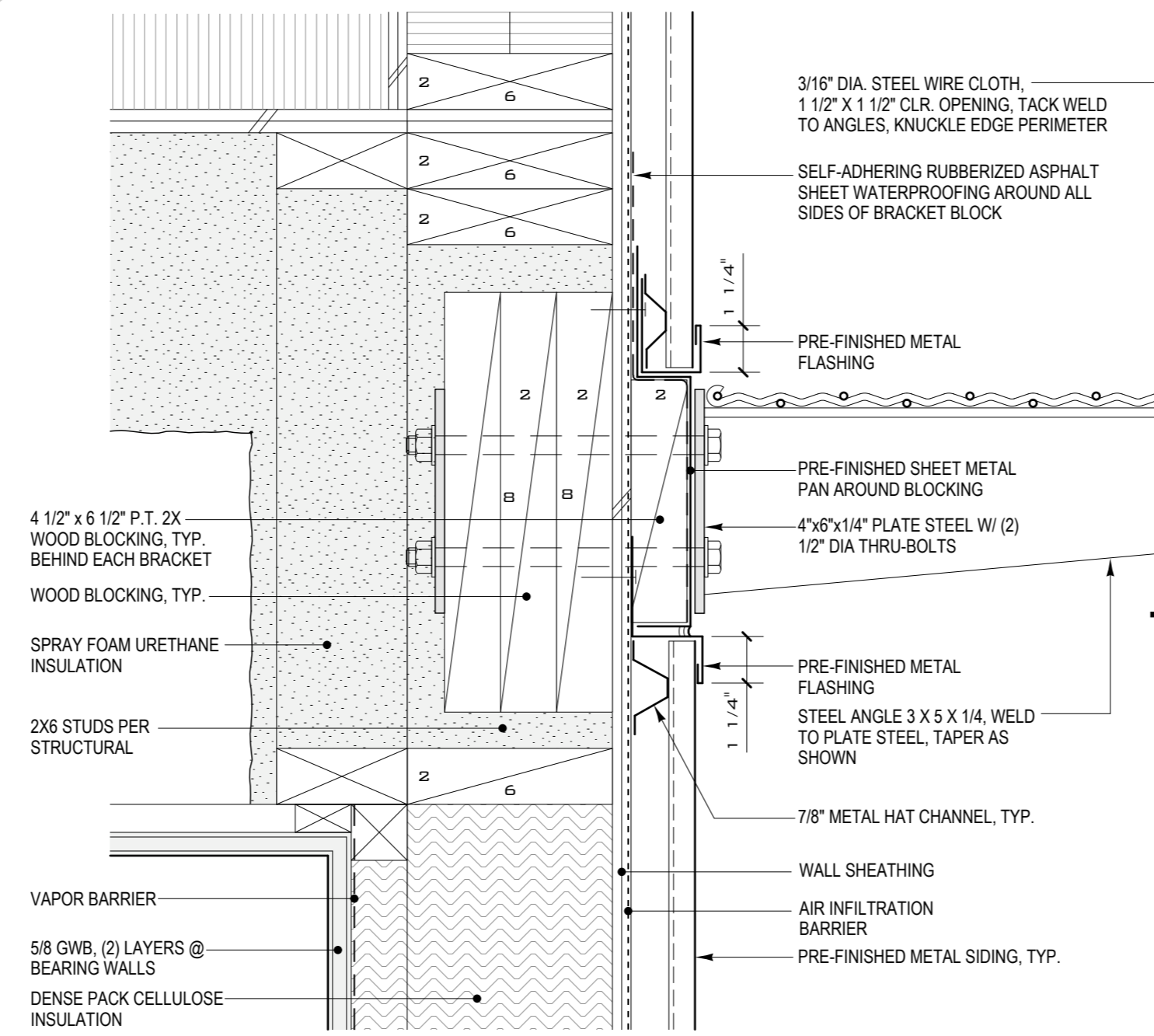
1. Paint all exposed steel. Color to be chosen by Architect.
2. Contractor responsible for providing, coordinating installation, and coordinating orientation of all metal Z-furring, U-furring and custom fabricated metal shapes as required for installation of rigid insulation and metal siding system at exterior walls of Building 1 based on the type of siding used and all other factors. All exterior metal siding and associated flashing to be securely anchored to metal furring channels or P.T. blocking typical.



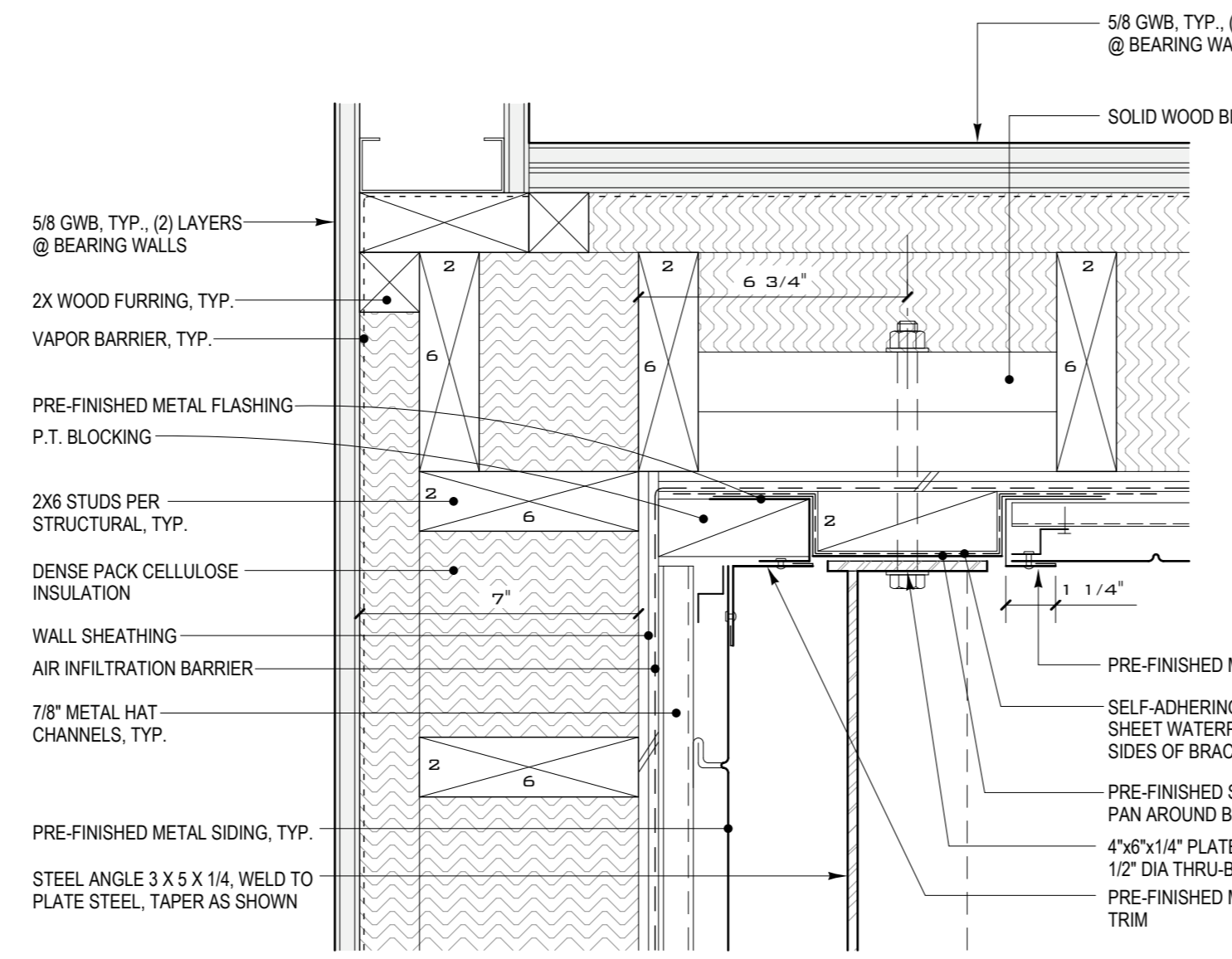
**2 STAIR TOWER ROOF DETAIL**  
3" = 1'-0"



**3 ELEVATOR SHAFT ROOF**  
3" = 1'-0"

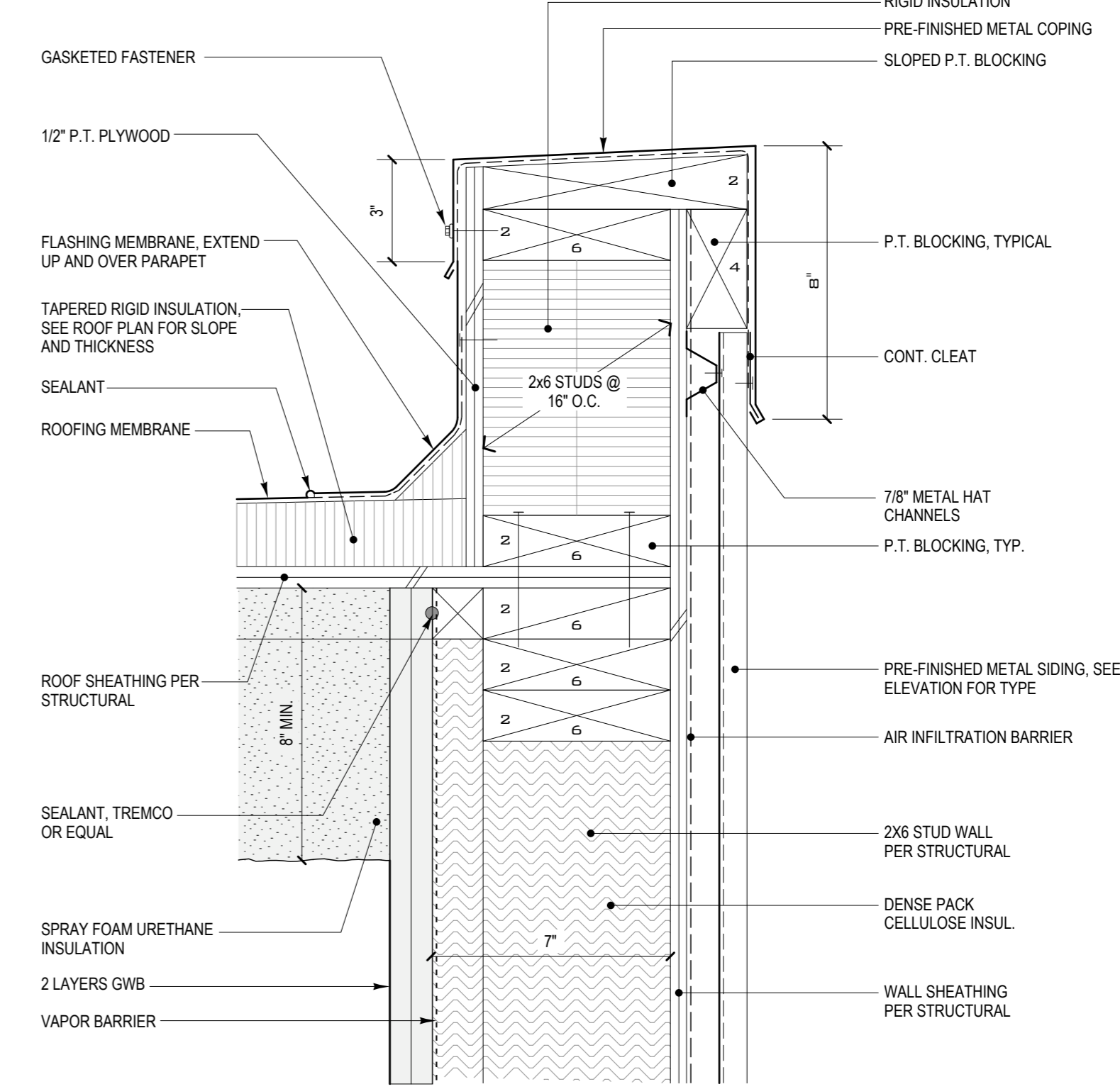


**4 TYPICAL HIGH AWNING BRACKET (BY ALT. #1)**  
3" = 1'-0"

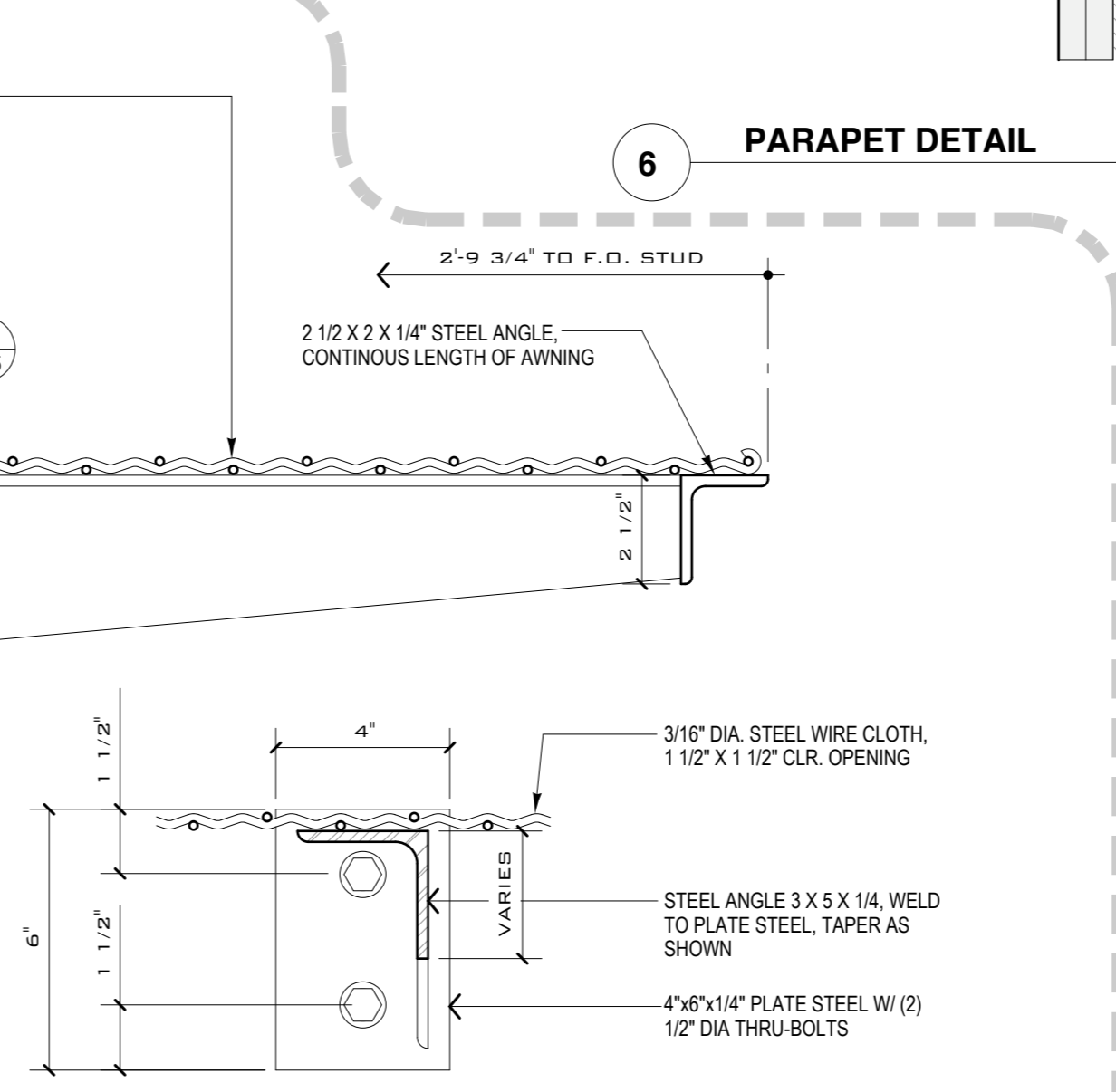


**5 TYPICAL HIGH AWNING BRACKET**  
3" = 1'-0"

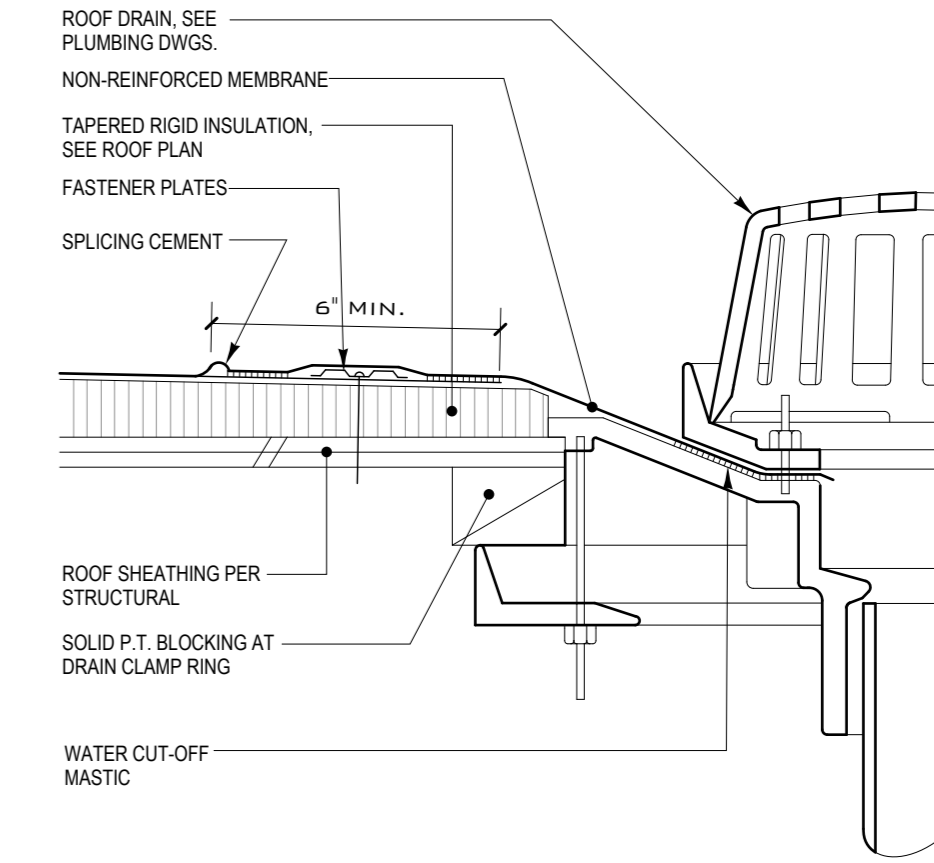
BY ALTERNATE #1



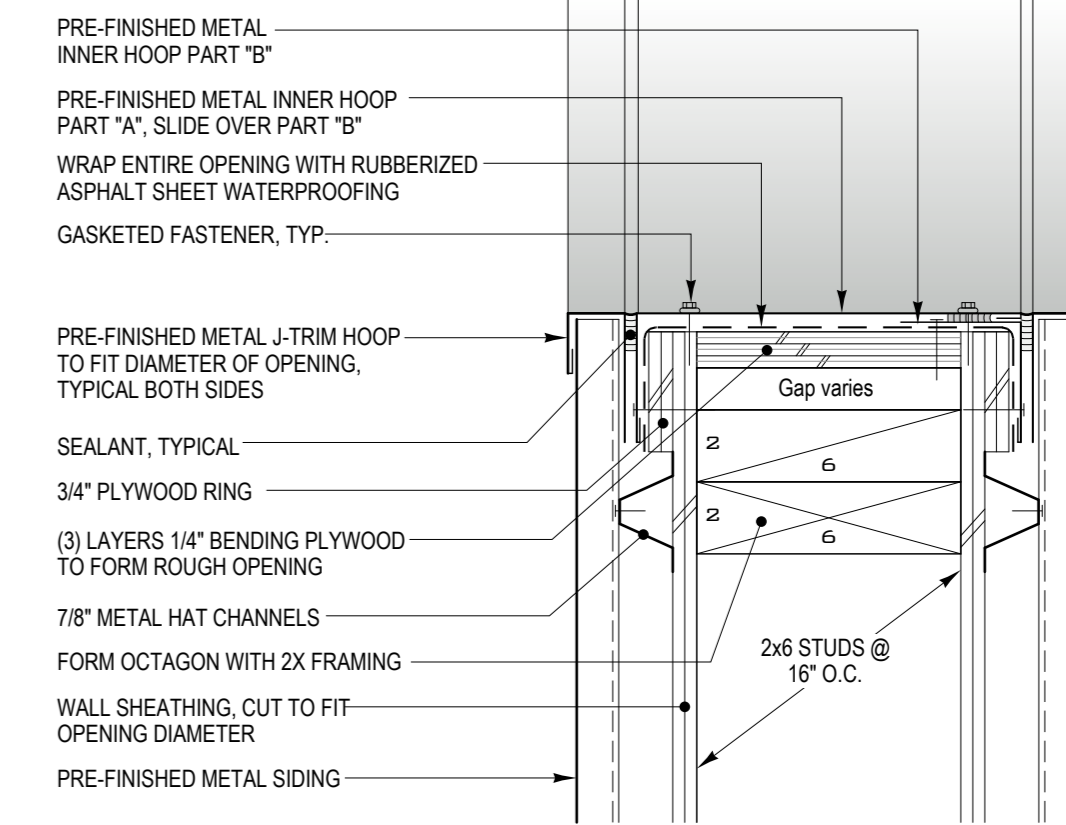
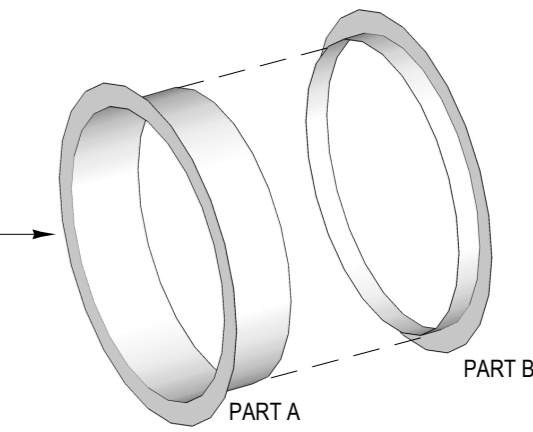
**6 PARAPET DETAIL**  
3" = 1'-0"



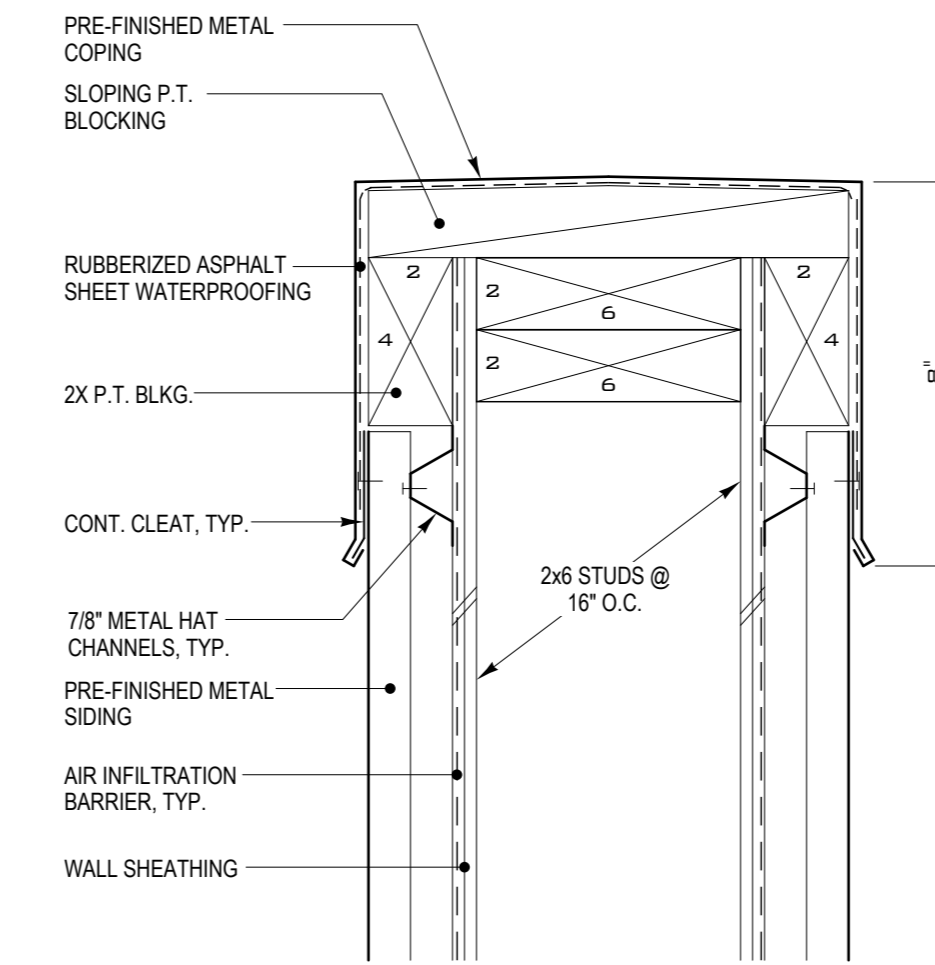
**7 HIGH AWNING BRACKET (BY ALT. #1)**  
3" = 1'-0"



**8 TYPICAL ROOF DRAIN DETAIL**  
3" = 1'-0"



**10 HOLE-IN-THE-WALL JAMB DETAIL**  
3" = 1'-0"



**9 WALL CAP DETAIL**  
3" = 1'-0"

**Pearl Place  
Building 1 & 2**  
Portland Maine

Developer  
**Avesta Pearl  
Street One, L.P.**

Architect  
**Winton Scott Architects**

Landscape Architect  
**Carroll Associates**

**EXTERIOR DETAILS**

**A5.5**

Scale: AS SHOWN