

Pearl Place Building 1 & 2 Portland Maine

Developer
**Avesta Pearl
Street One, L.P.**

Architect
Winton Scott Architects

Landscape Architect
Carroll Associates

Civil
**Gorrill Palmer
Consulting Engineers**

Structural
**Becker Structural
Mechanical / Plumbing
Mechanical Systems
Engineers**

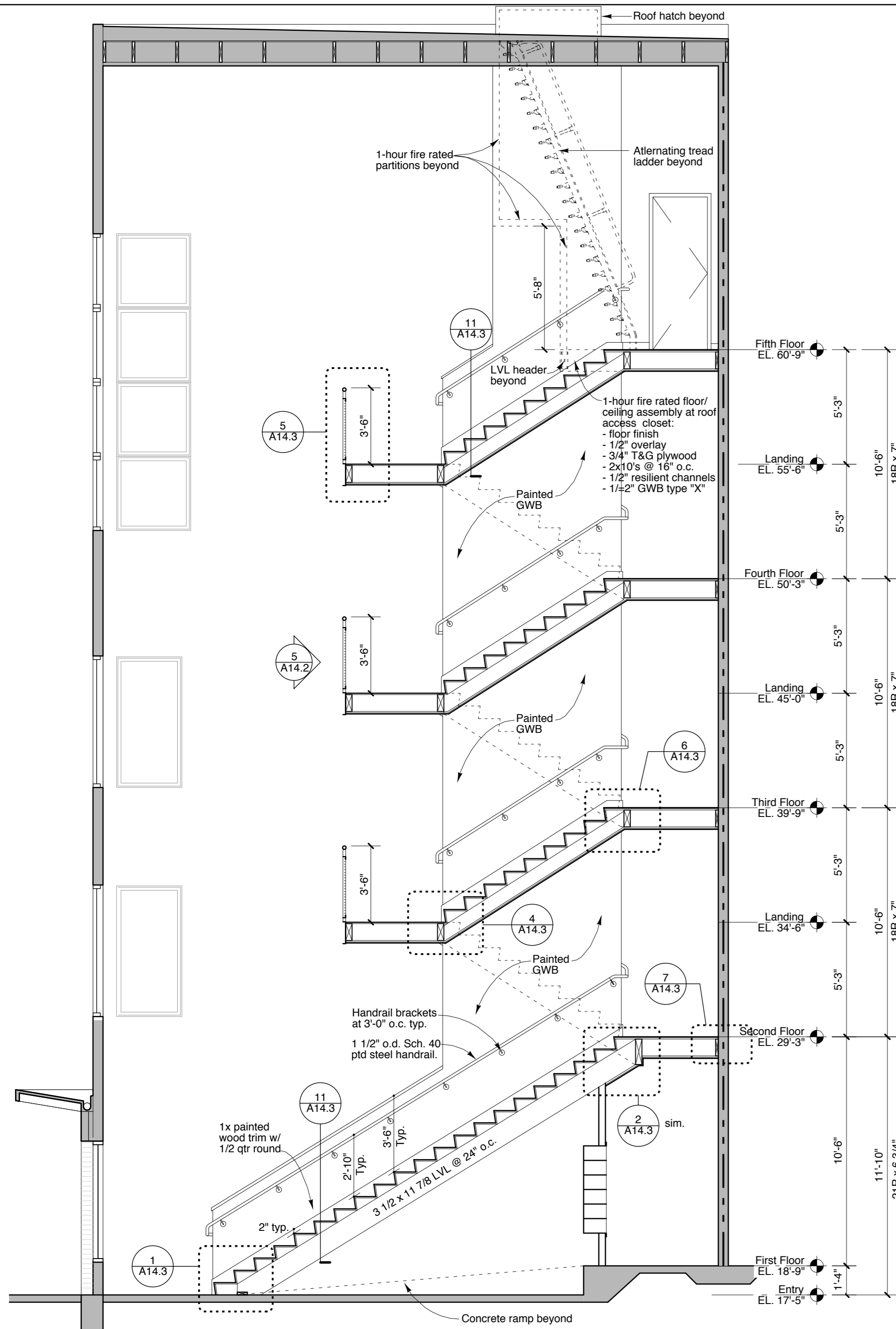
Electrical
Bartlett Designs

**STAIR PLANS,
SECTIONS
AND DETAILS**

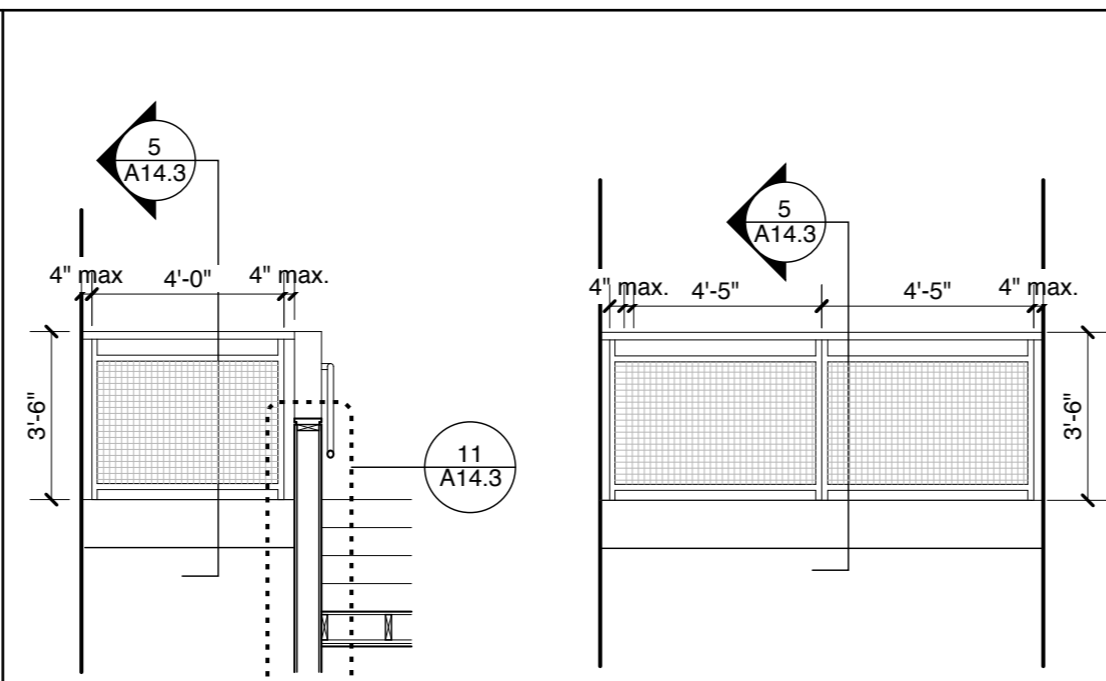
A14.2

Scale: as indicated

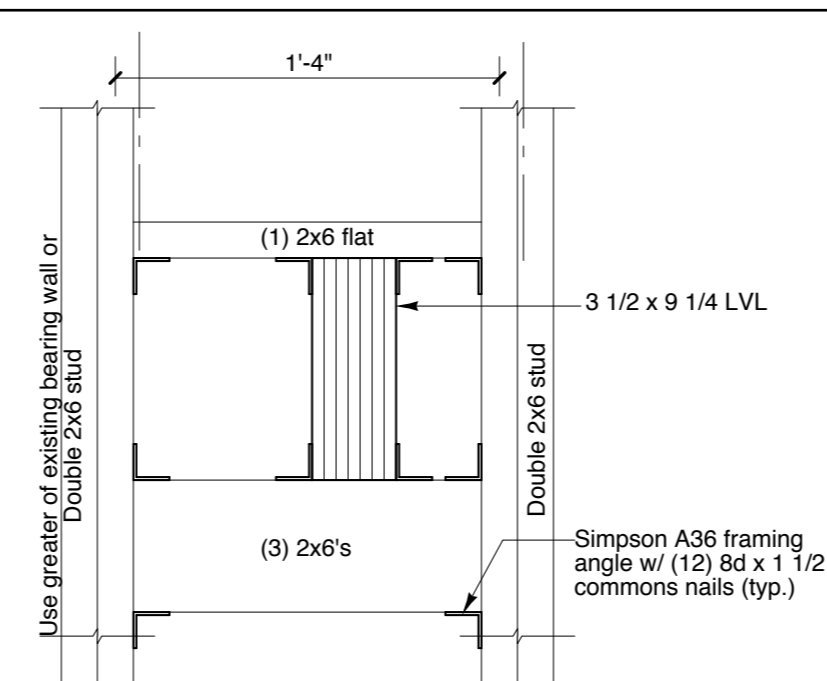
September 1, 2006



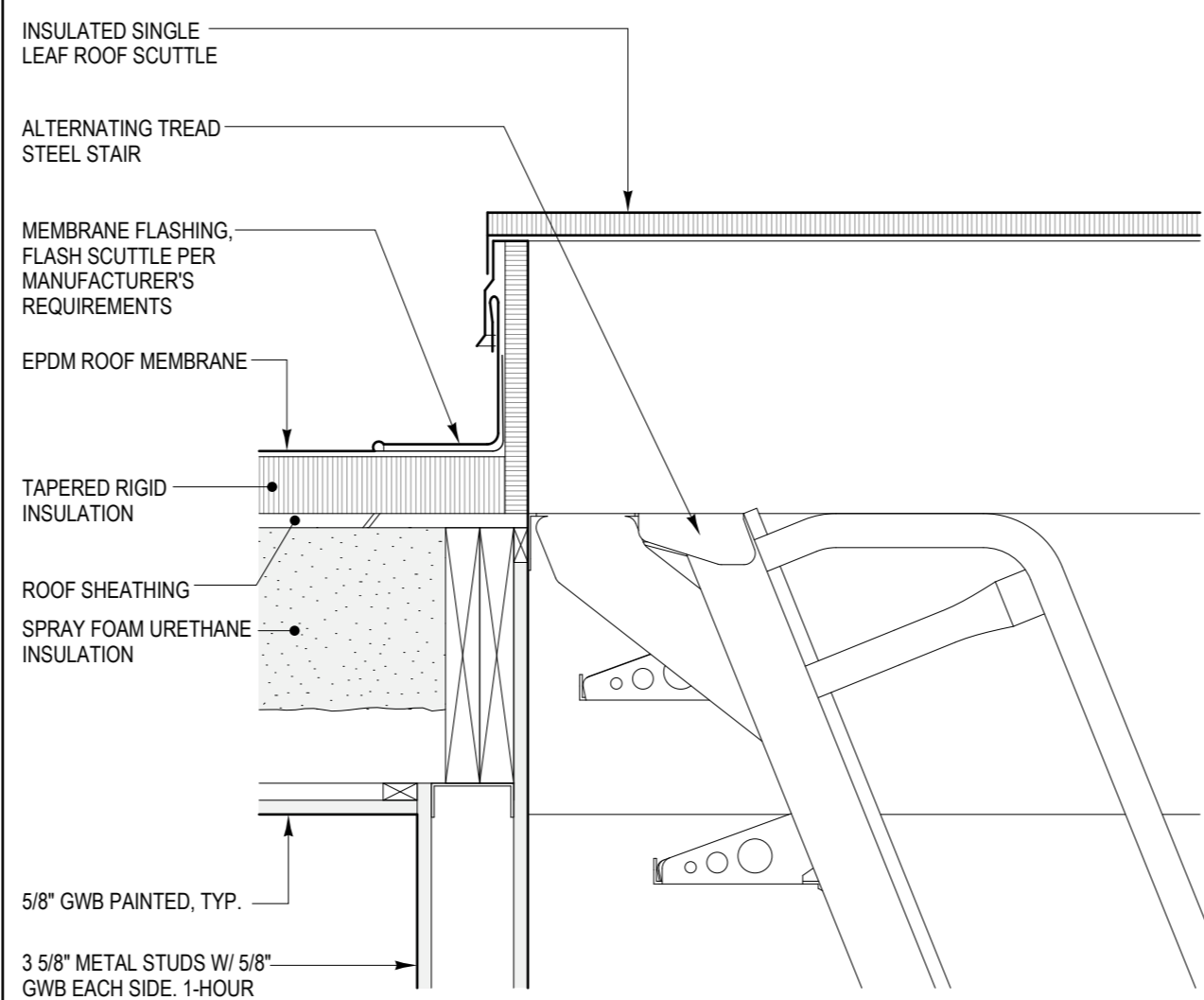
Section B-B - STAIR 2-2
Scale: 1/4" = 1'-0"



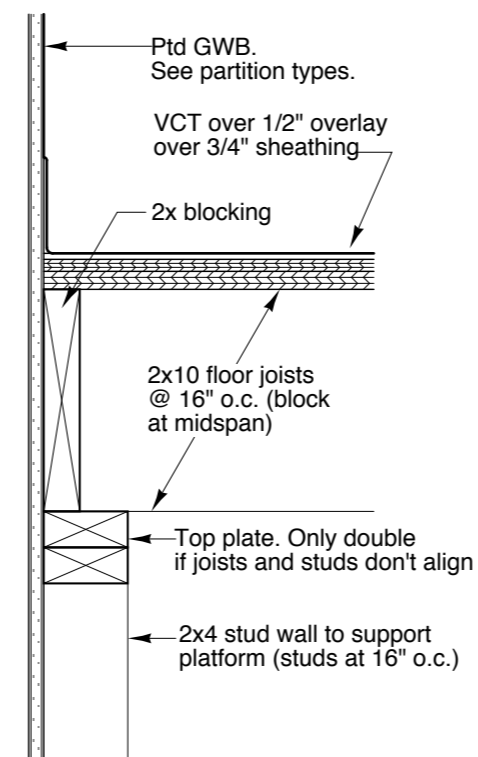
4 Guardrail Elevation Scale: 1/4" = 1'-0"
5 Guardrail Elevation Scale: 1/4" = 1'-0"



7 Typical Landing Header-to-Wall Detail
Scale: 1 1/2" = 1'-0" In-between floor levels

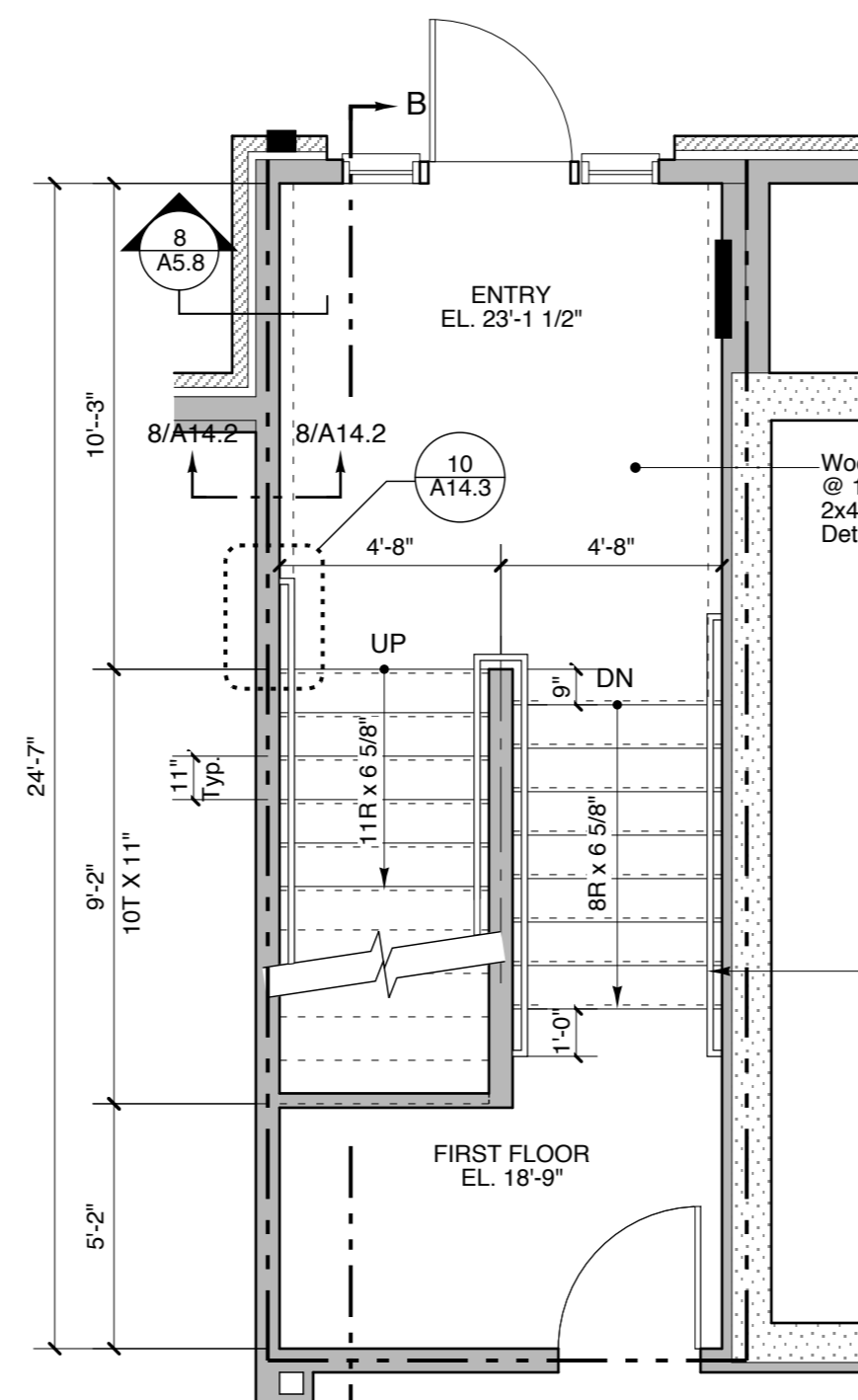


6 Roof Hatch Detail
Scale: 1 1/2" = 1'-0"

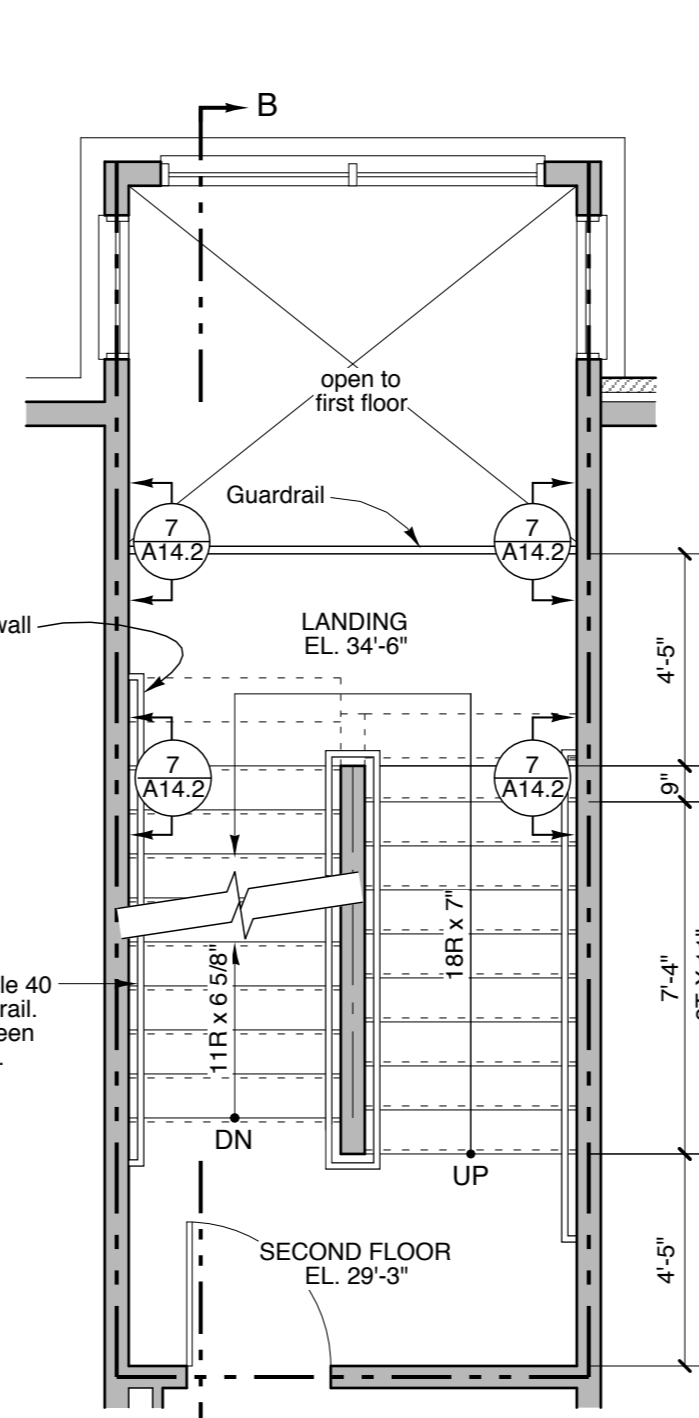


8 Platform Detail
Scale: 1 1/2" = 1'-0"

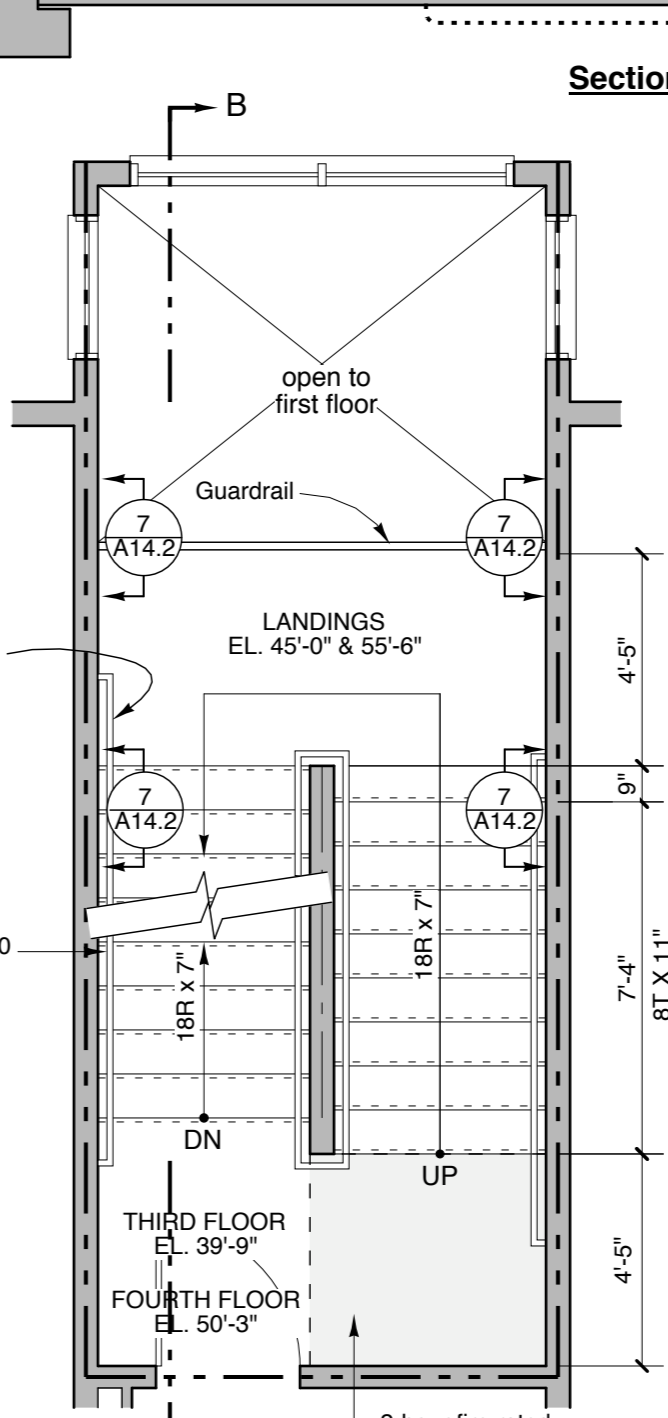
--- Indicates 2-hour fire rated assembly
Note: - All landings at Stairs 2-1 and 2-2 to receive VCT. All treads and risers to receive rubber.
- Entry wood platform elevation shall match concrete or brick paver elevation. Coordinate with Site drawings.



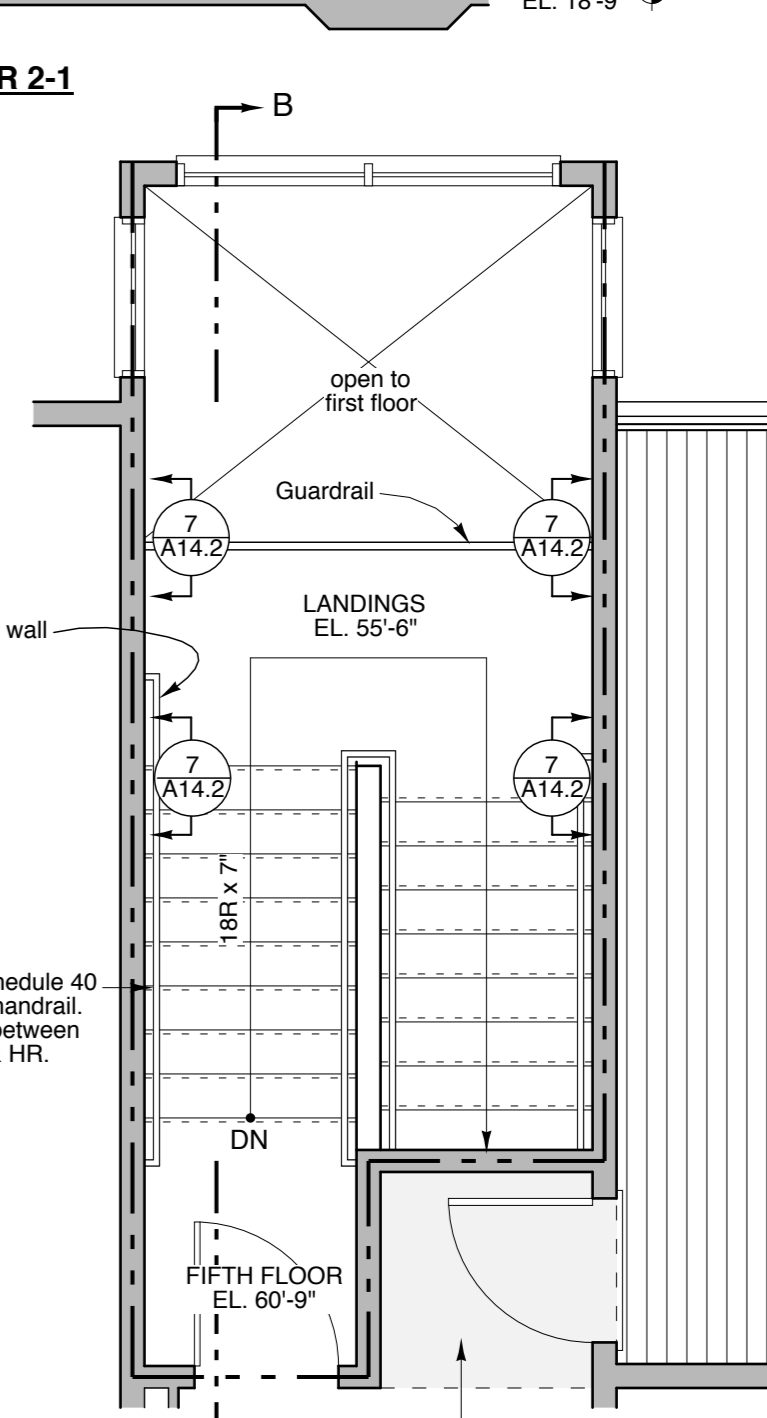
Plan at Entry Level



Plan at Second Floor

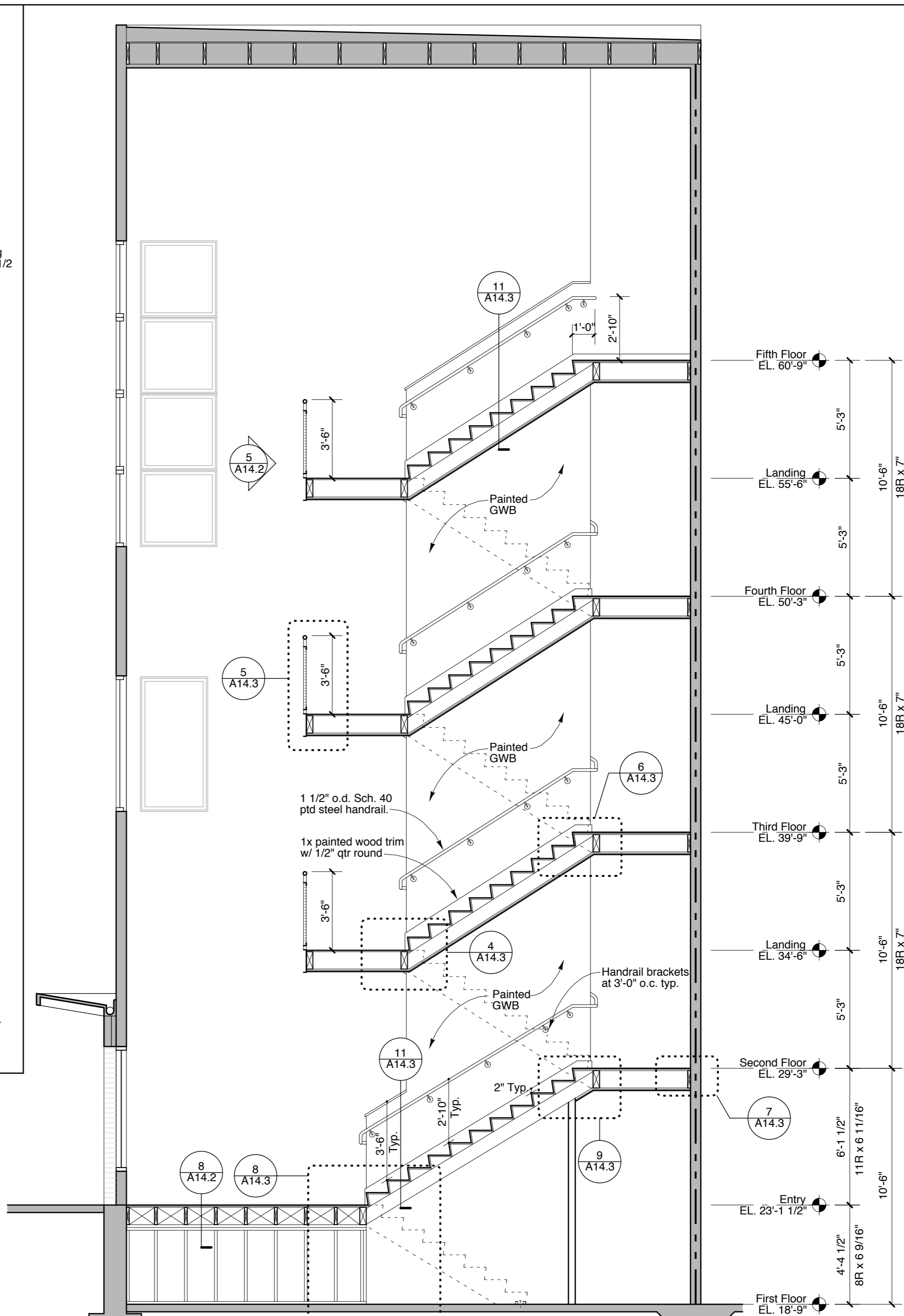


Plan at Third & Fourth Floor



Plan at Fifth Floor

3 Stair 2-1
Scale: 1/4" = 1'-0"



Section C-C - STAIR 2-1