

Pearl Place Building 1 & 2

Portland Maine

Developer
Avesta Pearl Street One, L.P.

Architect
Winton Scott Architects

Landscape Architect
Carroll Associates

Civil
Gorrill Palmer Consulting Engineers

Structural
Becker Structural Mechanical / Plumbing Engineers

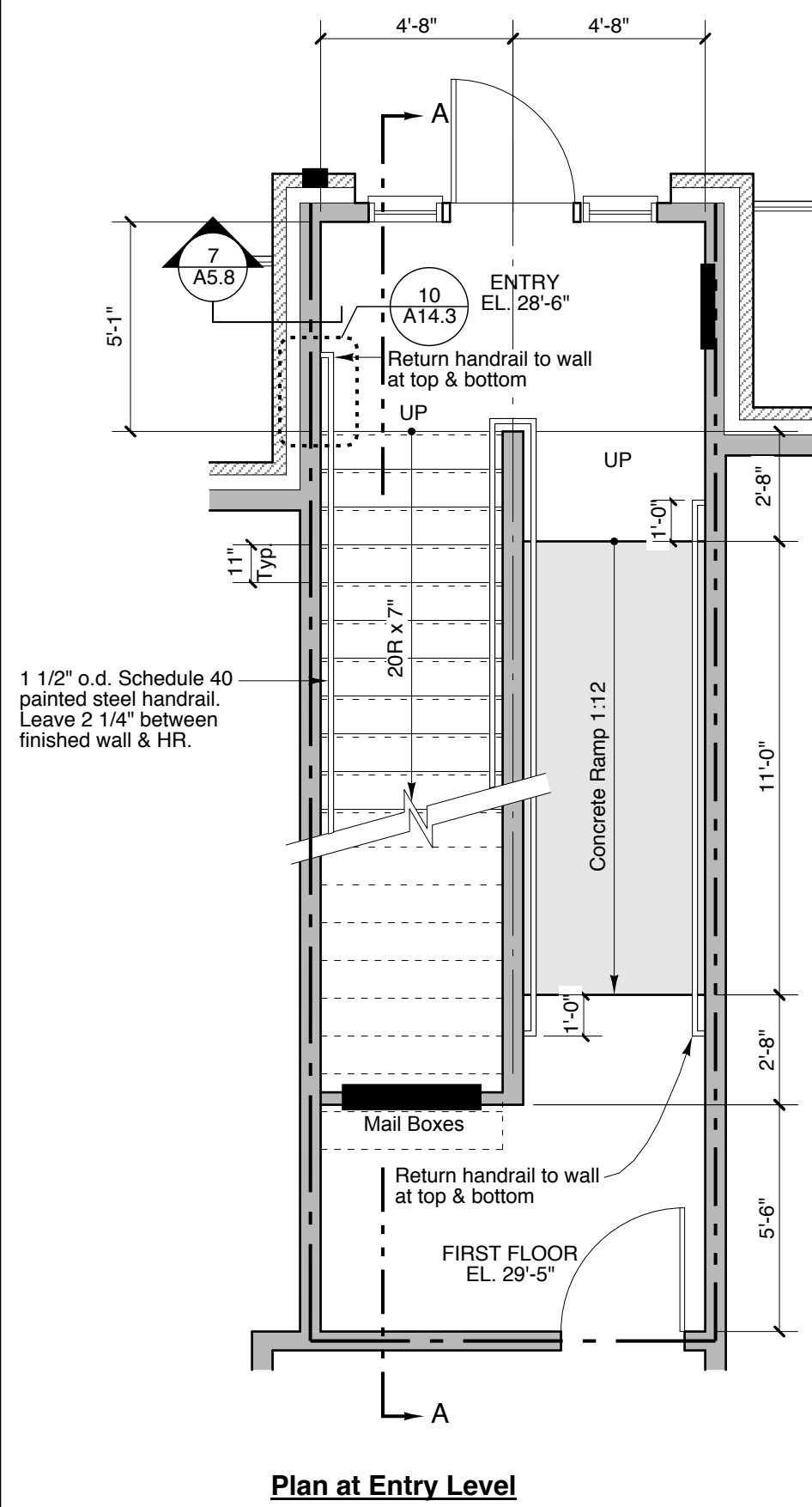
Electrical
Bartlett Designs

STAIR PLANS AND SECTIONS

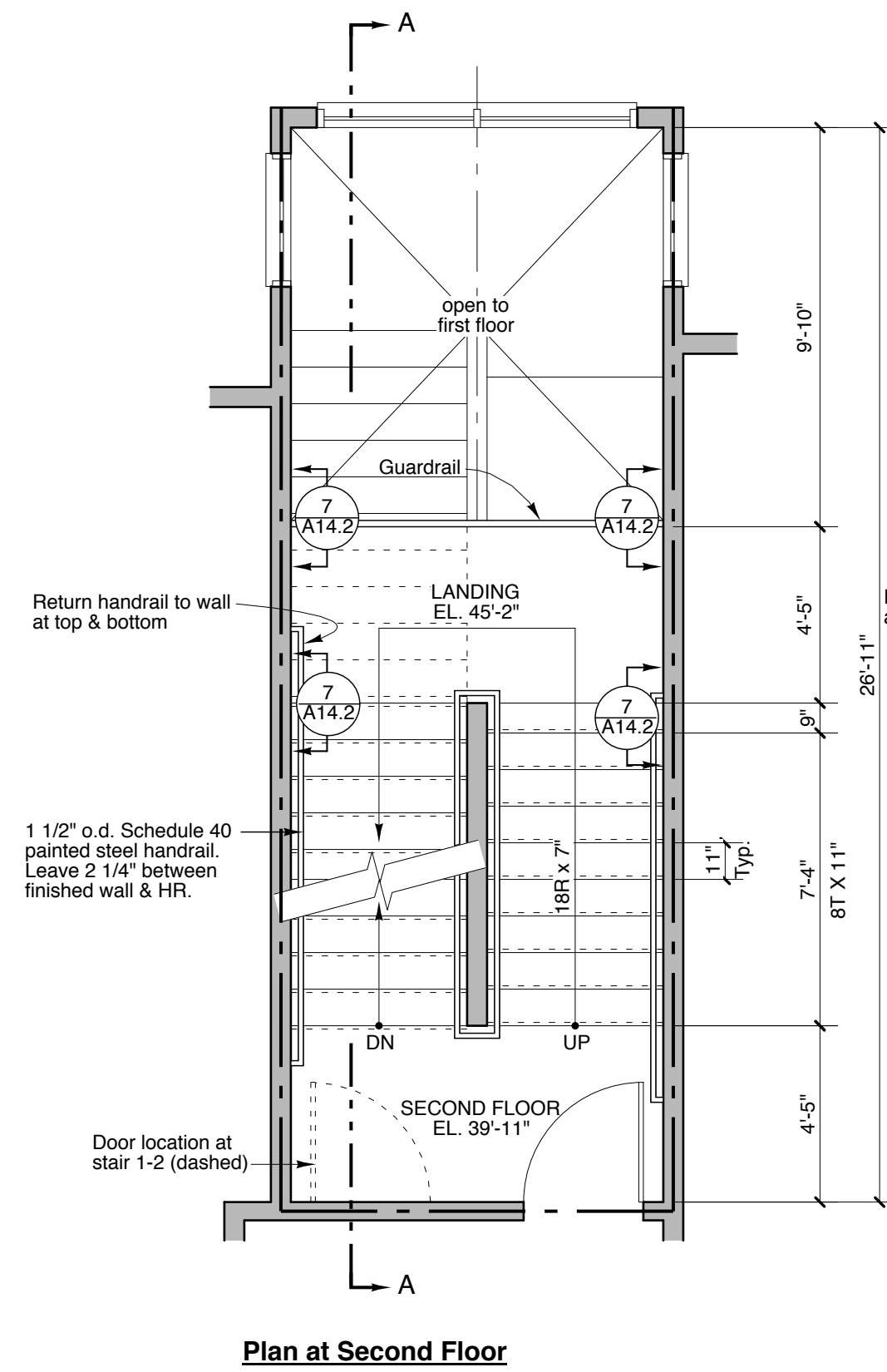
A14.1

Scale: 1/4" = 1'-0"

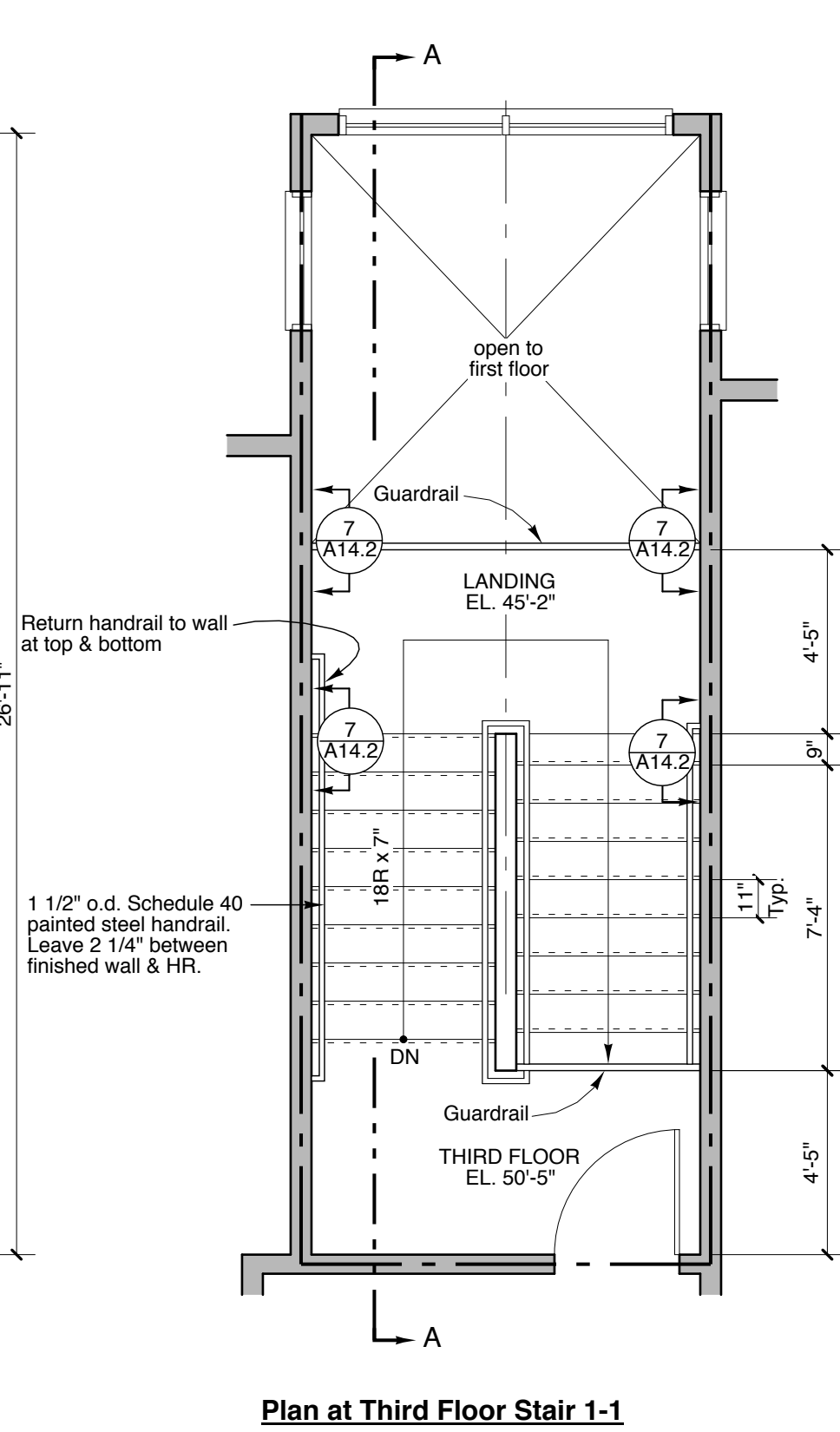
September 1, 2006



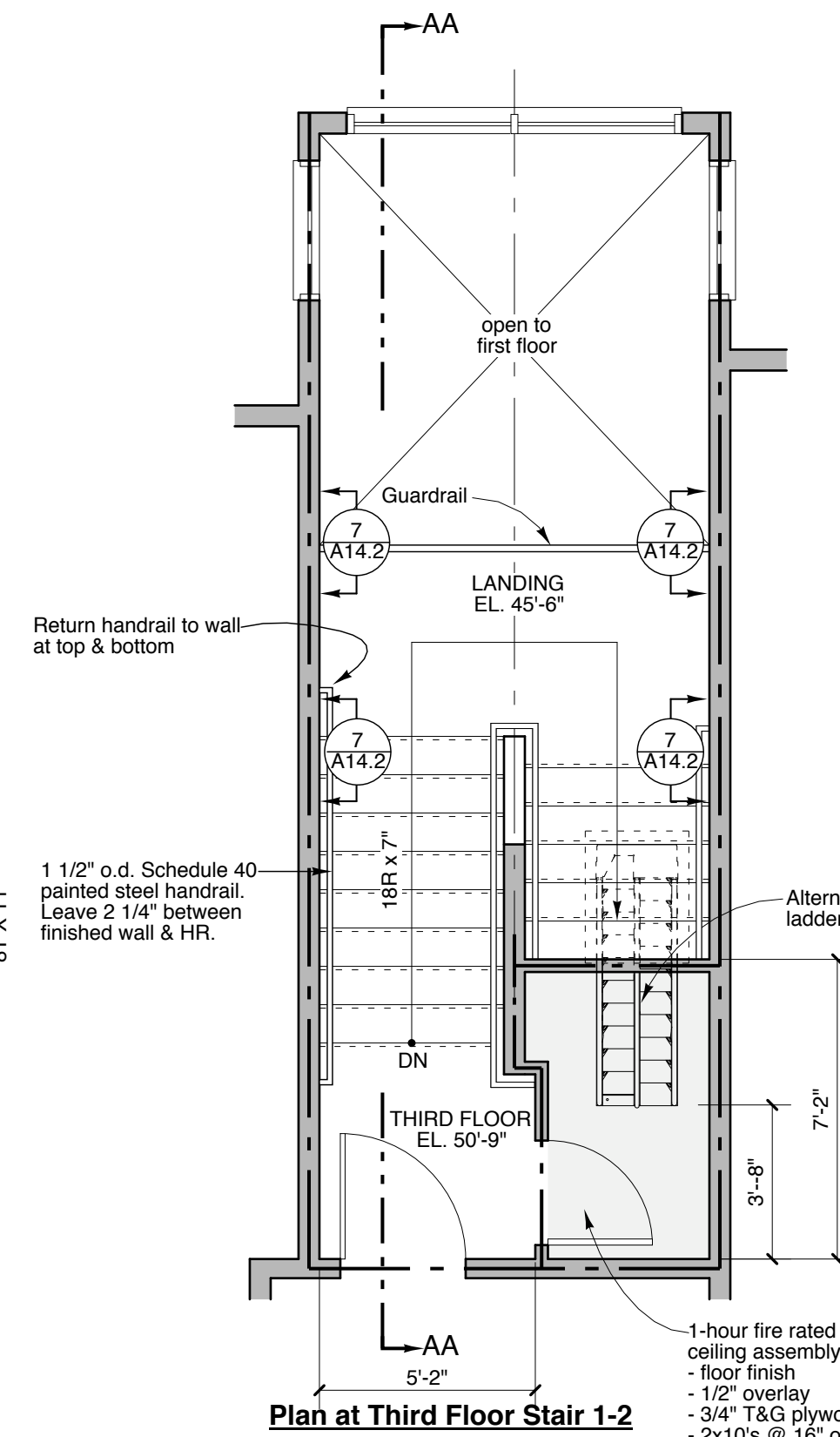
Plan at Entry Level



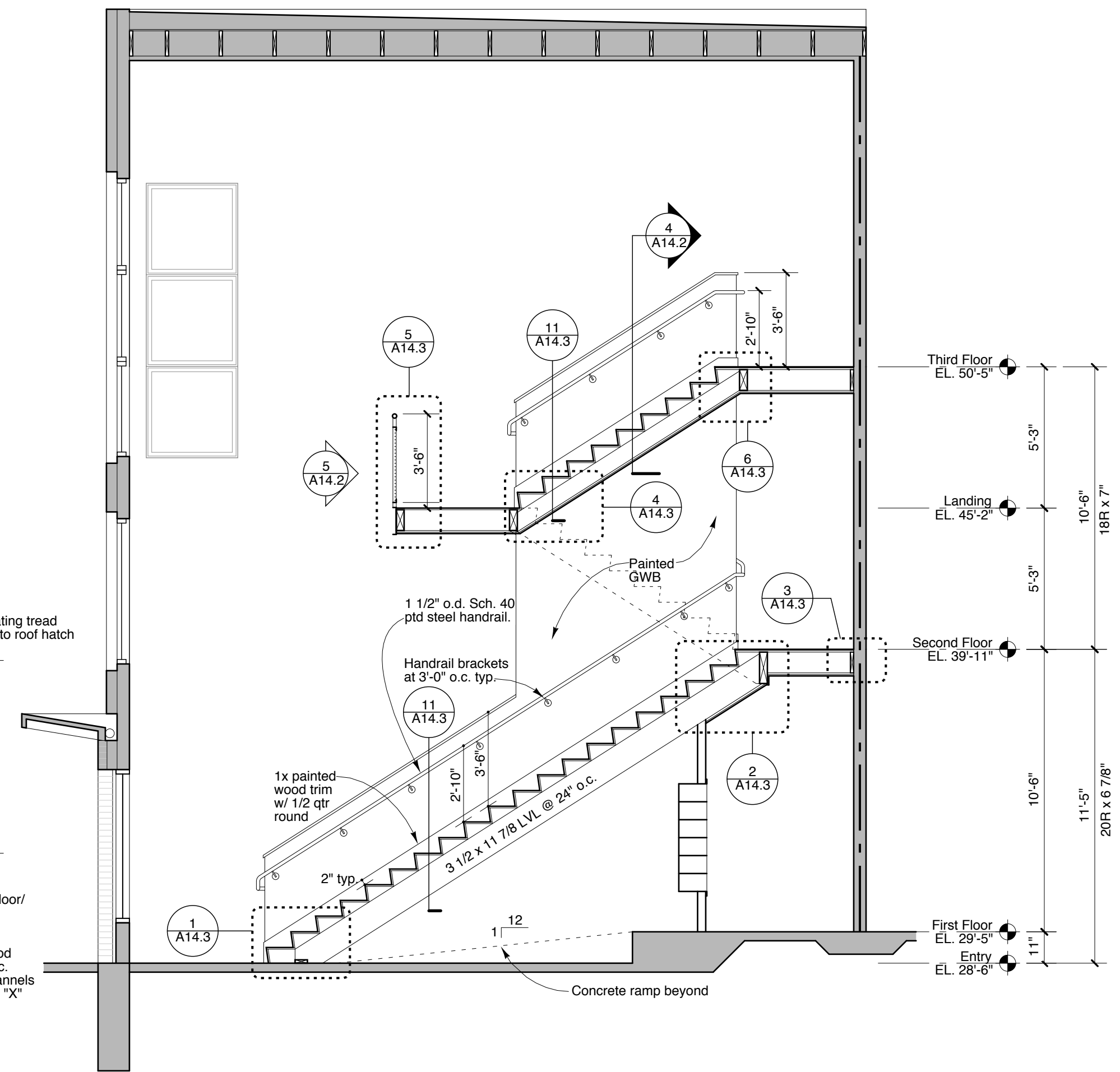
Plan at Second Floor



Plan at Third Floor Stair 1-1



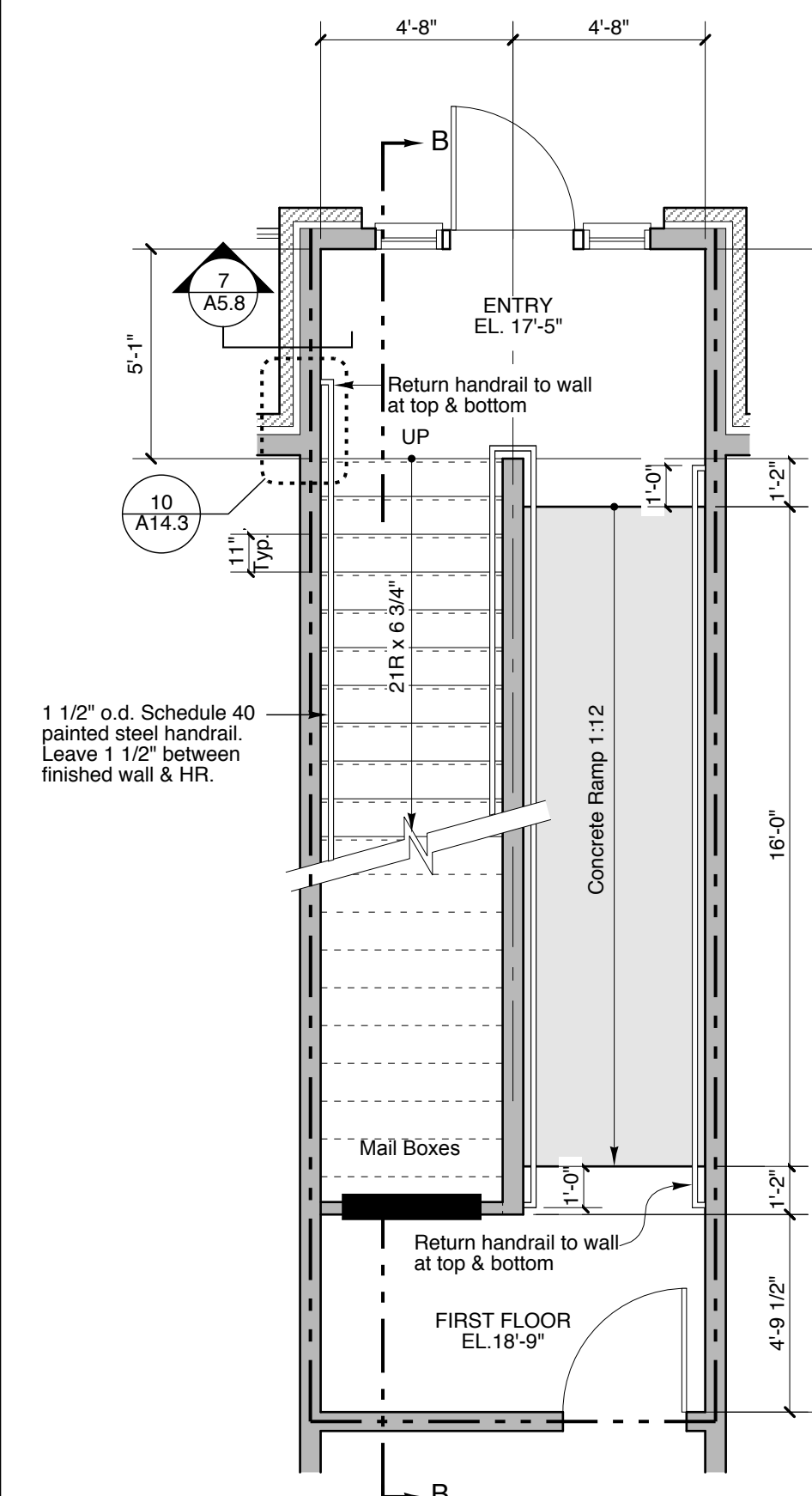
Plan at Third Floor Stair 1-2



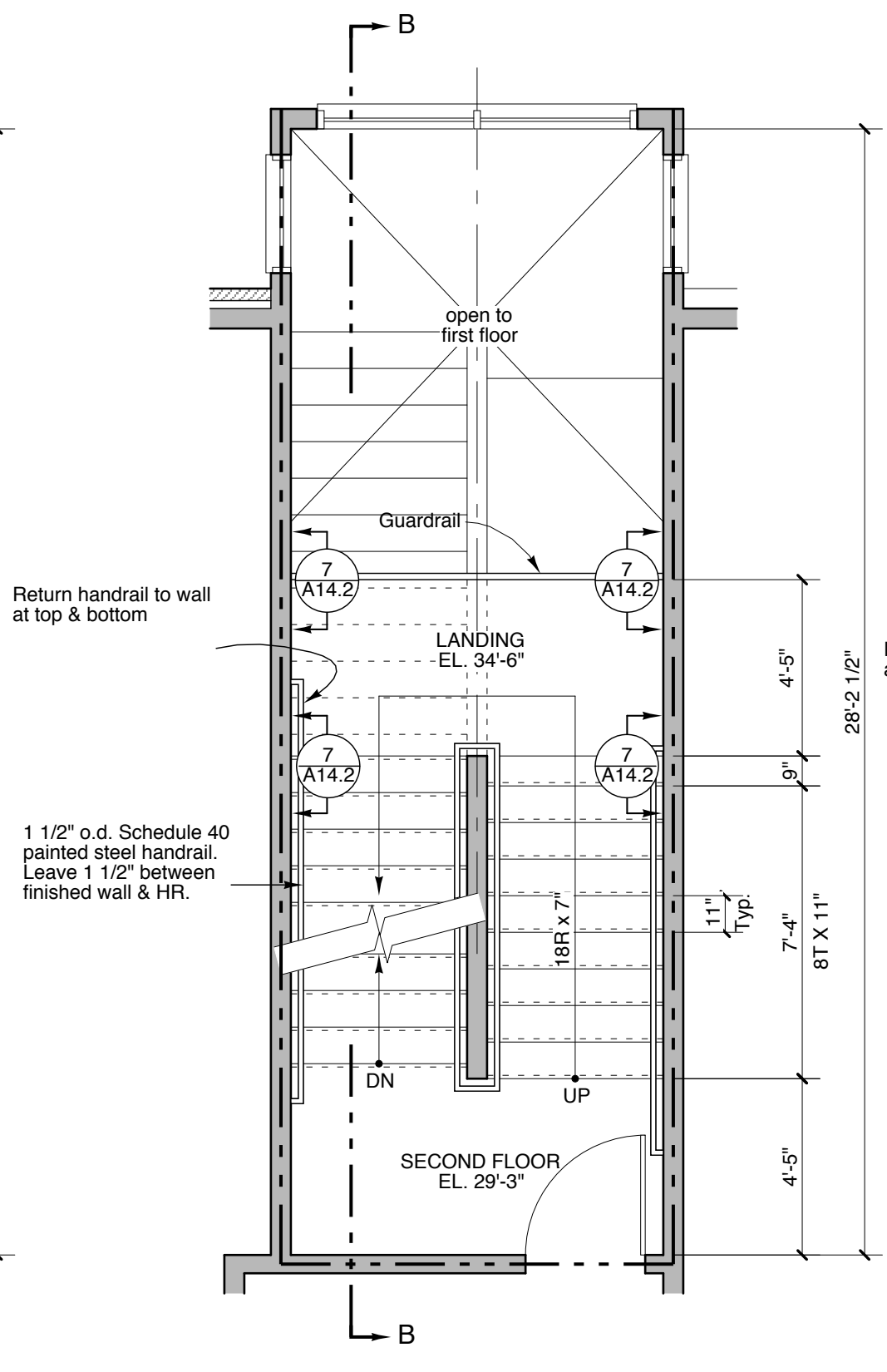
Section A-A

1 Stair 1-2 (Stair 1-1 similar)
Scale: 1/4" = 1'-0"

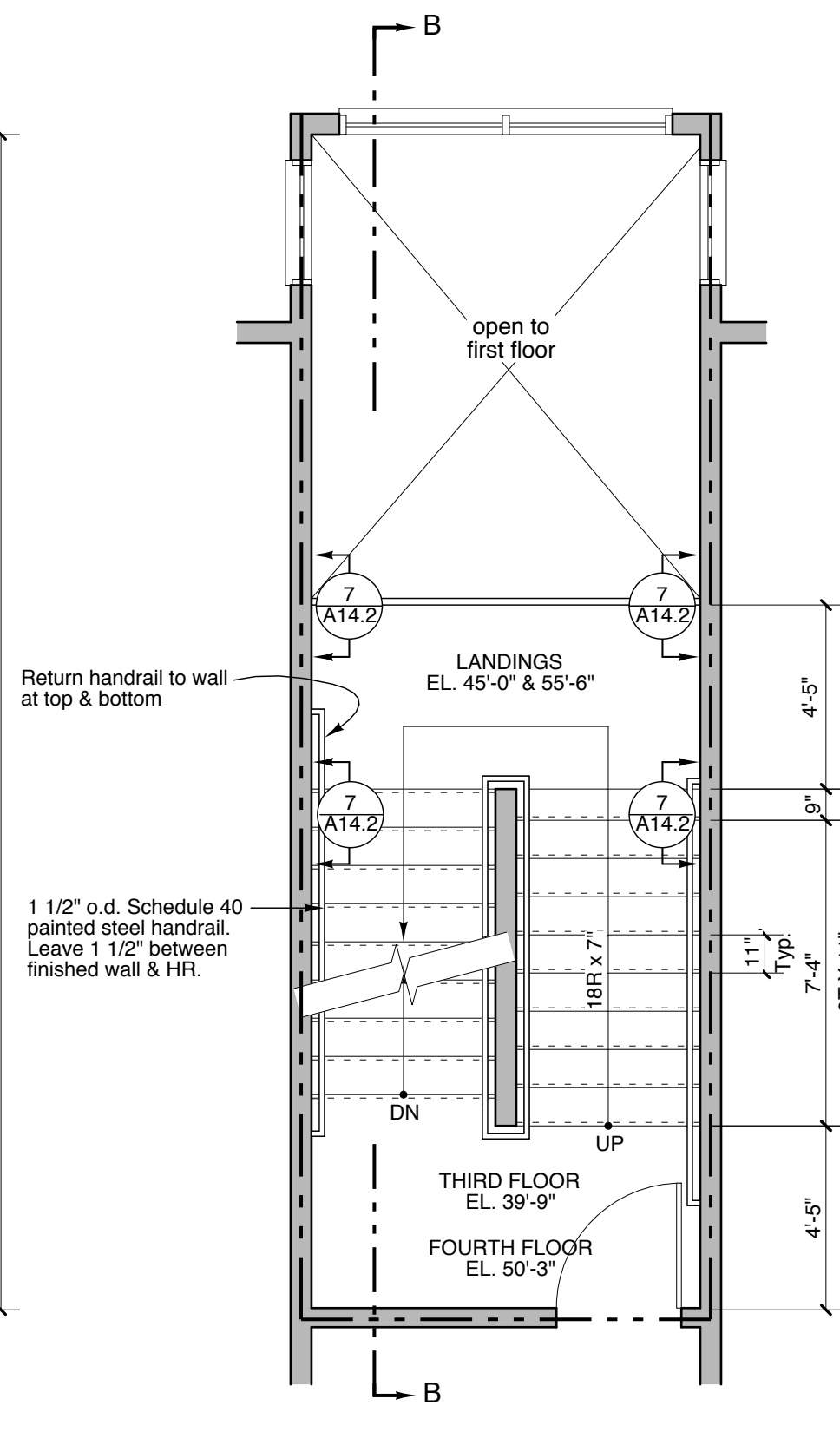
--- Indicates 1-hour fire rated assembly.
Note: - All landings at Stairs 1-1 and 1-2 to receive VCT. All treads and risers to receive rubber.
- Entry level slab elevation shall match concrete or brick paver elevation. Coordinate with Site drawings.



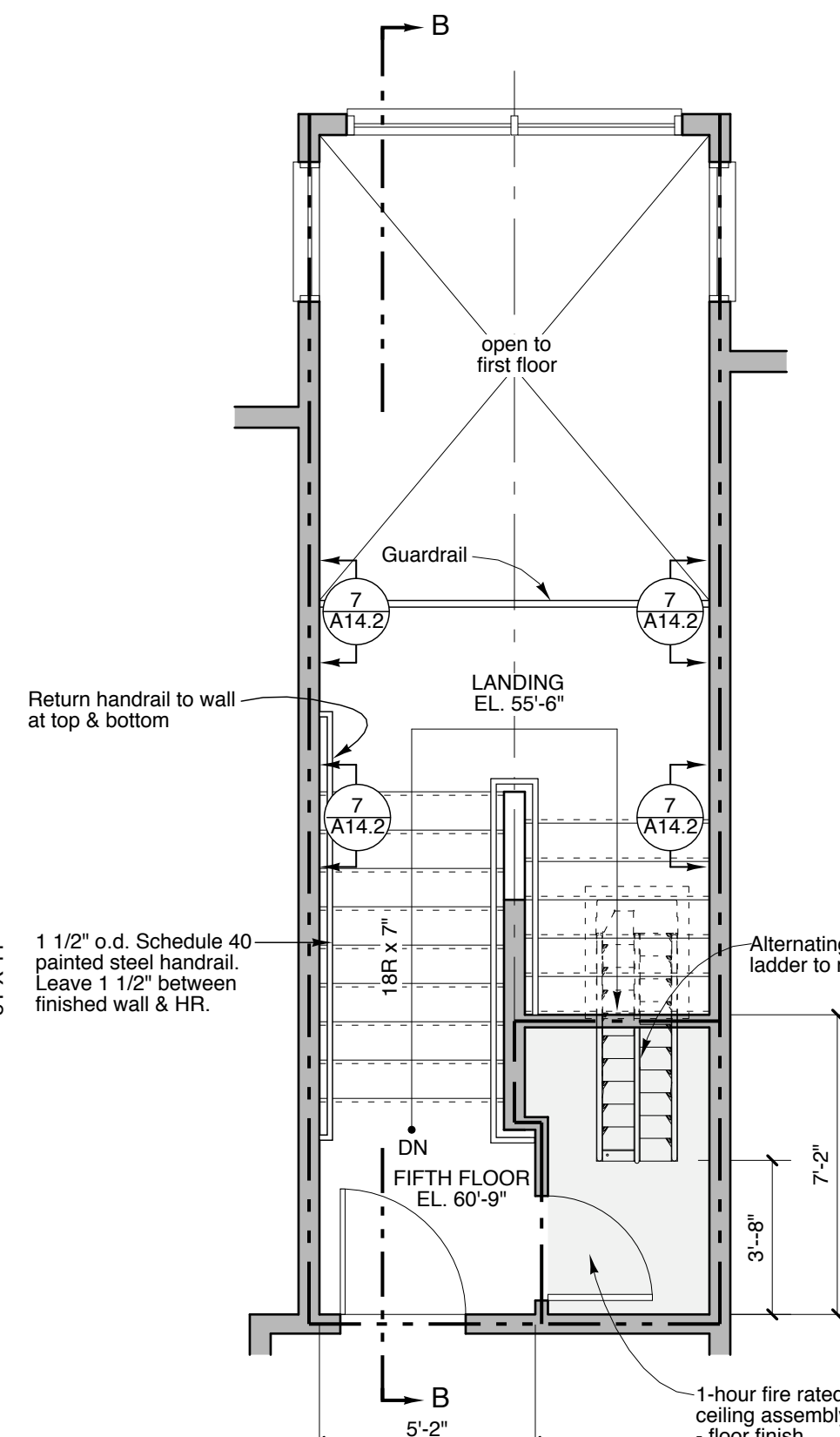
Plan at Entry Level



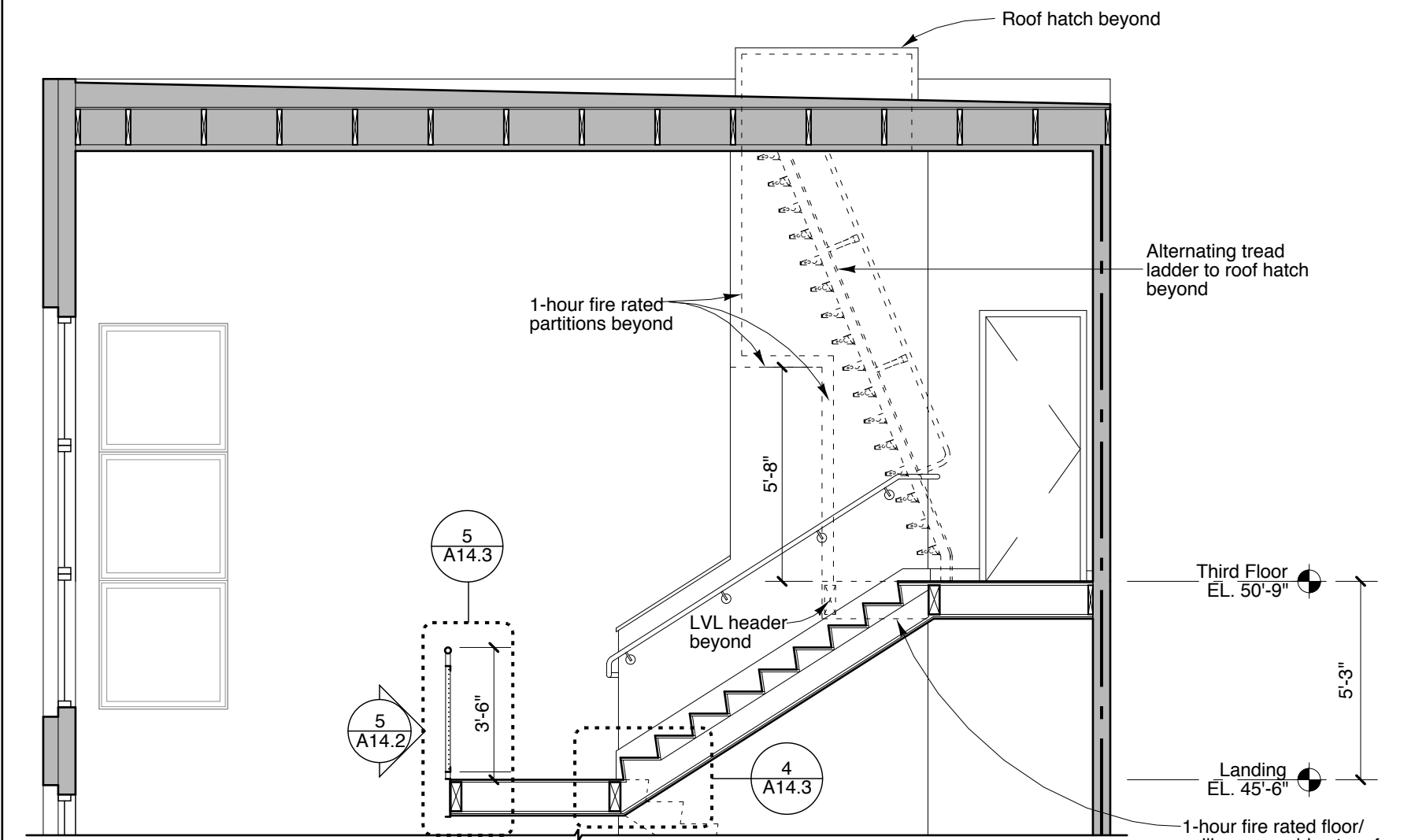
Plan at Second Floor



Plan at Third & Fourth Floor



Plan at Fifth Floor



Section AA-AA - Top of Stair 1-2

2 Stair 2-2
Scale: 1/4" = 1'-0"

--- Indicates 2-hour fire rated assembly
Note: - All landings at Stairs 2-1 and 2-2 to receive VCT. All treads and risers to receive rubber.
- Entry level slab elevation shall match concrete or brick paver elevation. Coordinate with Site drawings.

SEE SECTION B-B ON A9.2